

1 9 9 1 B U I C K



THE NEW SYMBOL FOR QUALITY IN AMERICA



Quality is as elusive as truth. Many claim it, few actually capture it.

But nothing else has so much to do with whether an automobile is a lasting pleasure or a memorable disappointment.

Quality is very much a part of Buick's heritage. Today, Buick continues to build upon this proud tradition by offering premium quality automobiles with refinements and features like those shown on these two pages.



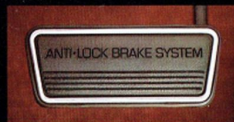
Quality cars deserve quality sound. All Buick sound systems are designed to fill your travels with resonant sound and a beautiful listening experience. And for the serious audiophile, there are available upgrades that can provide even more superb

more details on exquisite sound systems available, see page 42 and the specification page for the Buick of your choice.



Smoothly forceful. The combination of the 3800 V-6 with tuned-port injection and the advanced new electronically controlled 4-speed automatic transmission with overdrive is potent and civilized. Shifts are almost imperceptible, timed to stay near the engine's torque peak for excellent response.

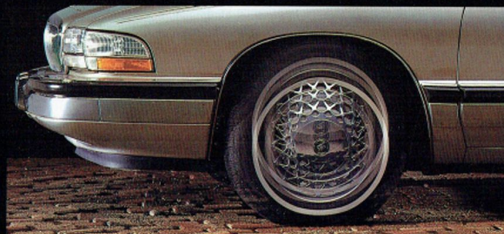
sound quality. The Concert Sound II speaker system is a perfect example with rich, pure sound reproduction from dual front extended-range woofer/tweeter units matched by dual rear extended-range speakers. Better still, the Concert Sound system is configured for the acoustics of the specific Buick it is in. For



A sense of control. Buick's anti-lock braking system (ABS) minimizes wheel lockup during extreme braking conditions while maintaining steering control. It monitors each wheel and senses impending lockup. Buick's ABS apportions more braking power to the wheel with the best traction and pulses brake pressure independently up to 15 times a second for retained control in most road conditions.

Take it with you. You may have concluded that to tow a trailer means resigning yourself to a van or a truck. Not so. You can tow up to 5,000 pounds with Buick comfort and quality. See page 43 in this catalog and ask your dealer for detailed trailer towing information.

The thinking suspension. Buick's advanced DynaRide™ suspension senses road conditions and reacts accordingly. Advanced valving technology uses a pyramid of disc valves that vary in diameter and thickness. A minor bump deflects just the first disc for isolation from road imperfections. In more severe



conditions, pressure in the shock absorbers bends thicker discs for additional control.

Putting rust to rest. Rust and corrosion can rob a car of its value quickly, so Buick fights it in ways both subtle and direct. For example, many Buick models have body panels galvanized with zinc on both sides everywhere but the roof to help prevent chips from becoming rust spots. That's

one of the reasons Buick is warranted not to rust through any body panel for 6 years or 100,000 miles. Ask your dealer for details.



State-of-the-art safety. A driver's-side Supplemental Inflatable Restraint system (air bag) is standard on Roadmaster, Park Avenue, Riviera and Reatta. It is designed to supplement the manual front-seat lap/shoulder belt system in substantial frontal impacts of over 12 to 14 miles per hour. Some Buicks are

equipped with automatic safety belt systems for the driver and right front passenger.

Protecting your investment and your time. Buick's protection begins, but does not end, with the GM 3-year/50,000-mile BUMPER TO BUMPER PLUS WARRANTY. See your dealer for terms of this limited warranty. Free roadside assistance is available to owners of all 1991 Buick models. It provides minor repairs or towing for disabled vehicles for 3 years or 50,000 miles, whichever comes first. When you need it, just call 1-800-252-1112, 24 hours a day, 365 days a year. Ask your dealer for details.

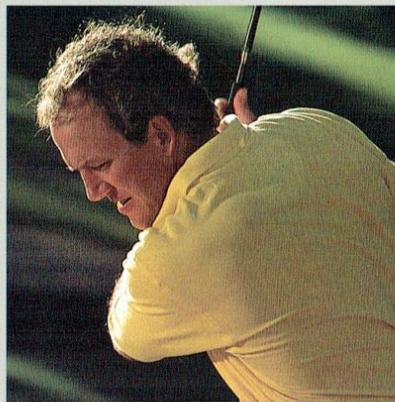
Choose your climate. Buick's dual ComforTemp climate control lets you and your front-seat passenger select your individual temperature settings. It is standard on the Park Avenue Ultra and available on Park Avenue and Regal.



PARK AVENUE ULTRA & PARK AVENUE

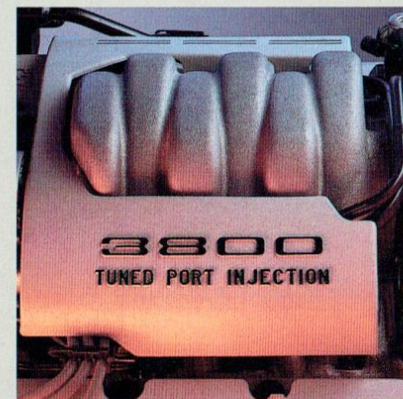
The Park Avenue® and Park Avenue Ultra: the most sophisticated 6-passenger sedans Buick has ever offered. They are designed to stir the spirit and excite the soul.





Park Avenue's advanced powerteam utilizes the 3800 V-6 engine with tuned-port injection along with the new whisper-smooth electronically controlled 4-speed automatic transmission with overdrive. ■ Anti-lock brakes provide an added measure of driving security. ■ Dual automatic ComforTemp climate control in the Ultra allows driver and front-seat passenger to select separate temperature levels. (Available on the Park Avenue as well.) ■ Sierra Ultra Soft leather in seating areas is standard in the Ultra and available in the Park Avenue. ■ What's more, Park Avenue is built with a level of care that makes it a proud example of Buick at its best.

Park Avenue has the 3800 V-6 with tuned-port injection and new electronically controlled 4-speed automatic transmission with overdrive for smooth shifts and exhilarating power.



Park Avenue Ultra Sedan.

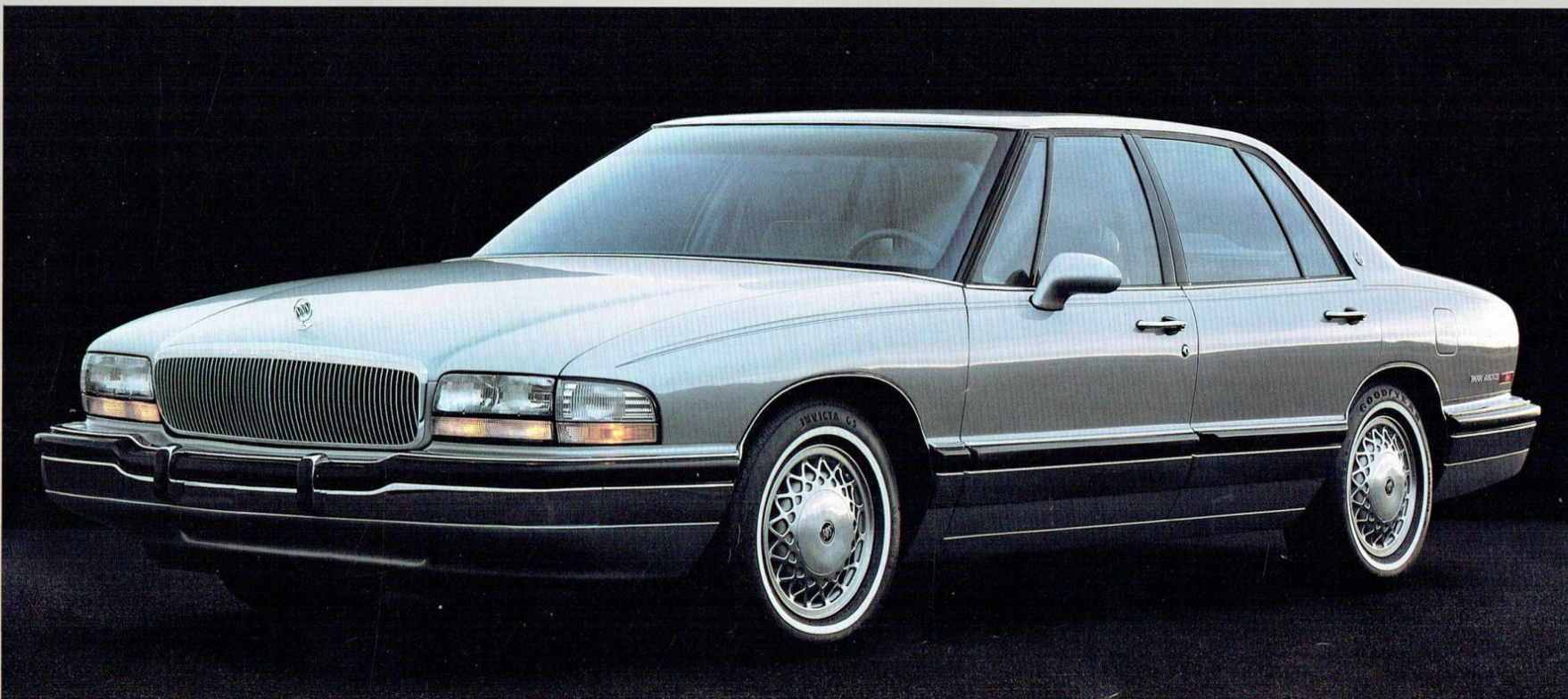


The backlit instrument panel is shown with available analog gage cluster. Note the steering wheel housing for Supplemental Inflatable Restraint system (SIR) and controls for automatic dual ComforTemp climate control.

Park Avenue interior in the available Sierra grain Ultra Soft leather and doeskin vinyl.

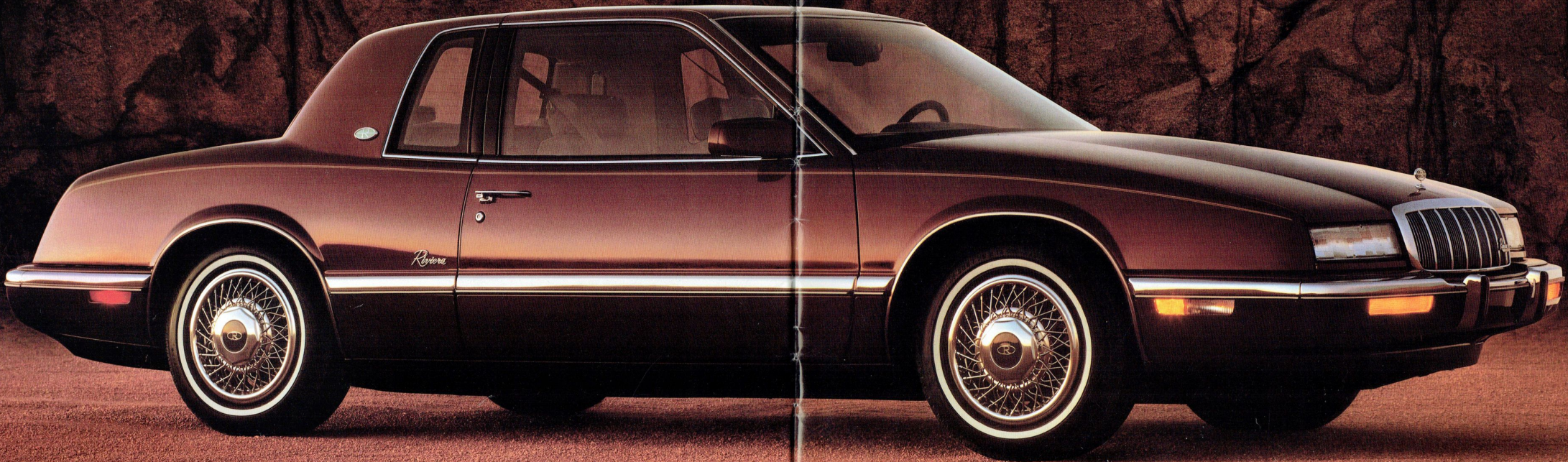


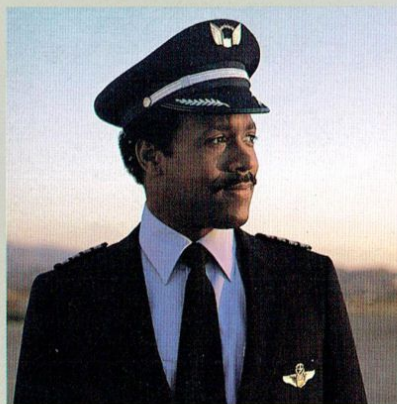
The Park Avenue Ultra is sleek, luxurious and lavishly equipped with comfort and convenience features. With its room, luxury, quality and style, the Park Avenue is truly a premium American motorcar.



RIVIERA

From the beginning, Riviera® has stood apart from the crowd. With its distinctive style, impressive capabilities and pure luxury, it is a contemporary American classic.





Riviera's 3800 V-6 with tuned-port injection is matched with a new electronically controlled 4-speed automatic transmission with overdrive. The suspension is 4-wheel independent with either DynaRide® or available Gran Touring. ■ Inside, your choice of standard or available sound systems plays through a superb Concert Sound II 6-speaker system. ■ Retained accessory power keeps your sound system, sunroof, power windows, wipers and washer operational from the time you turn off the ignition to the time you open a door. ■ The Riviera: classic lines, classic quality, classic luxury and a classic way with the road.

The crisp, undistorted sounds of CD may be added to the Riviera's sound system for your pleasure on the road.

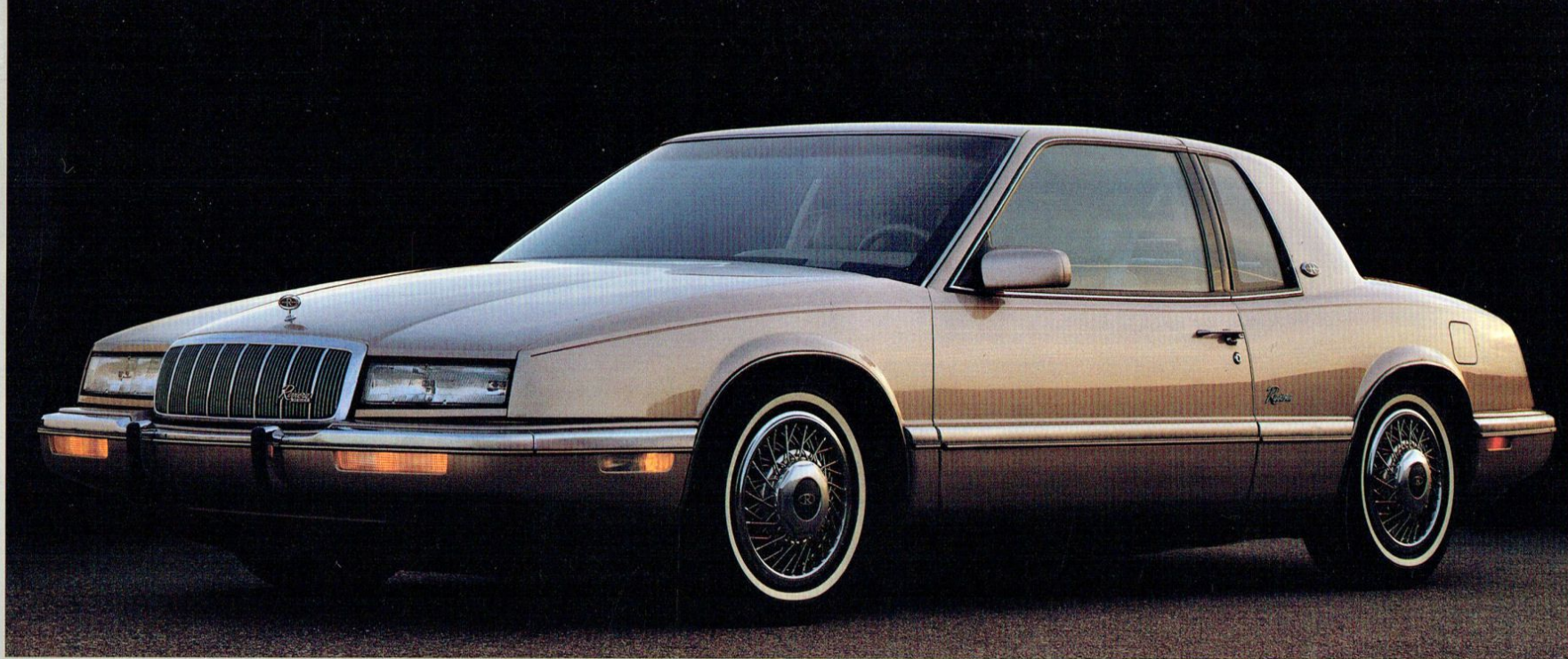


Riviera Coupe.

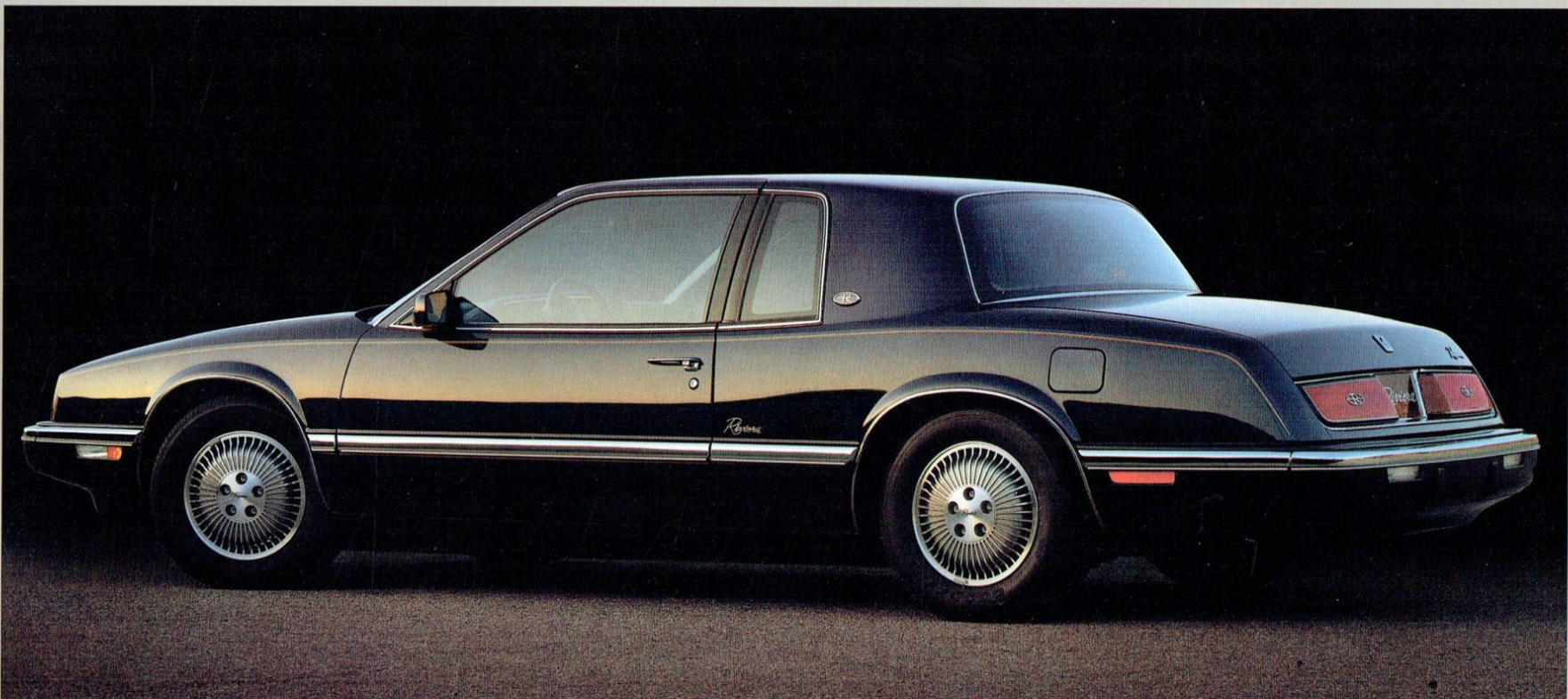


The instrument panel of the Riviera features a digital speedometer for clarity and analog instruments for quick, accurate readings.

Sheer luxury inside the Riviera includes available Ultra Soft leather and Sierra vinyl in seating areas.



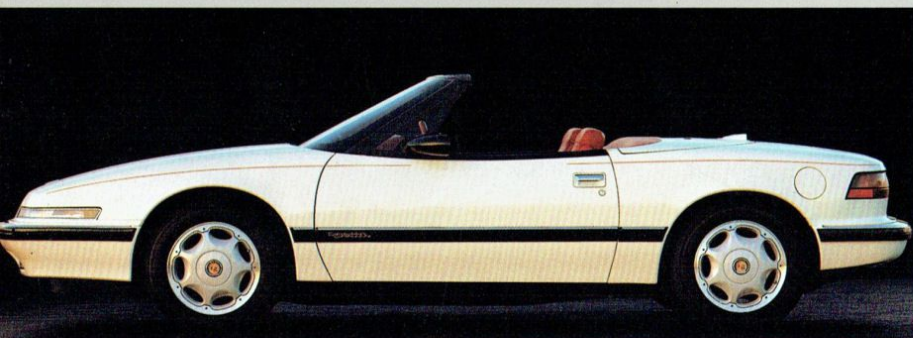
Even at a distance, you will not mistake the Riviera for another automobile. The look is unique. A classic design like the Riviera (shown with available aluminum wheels) shows even in the attention to details that set it apart.



REATTA

Buick's Reatta® is a world-class, limited-production 2-seater with the exhilaration of a sporty car and the luxury and comfort of a Buick.



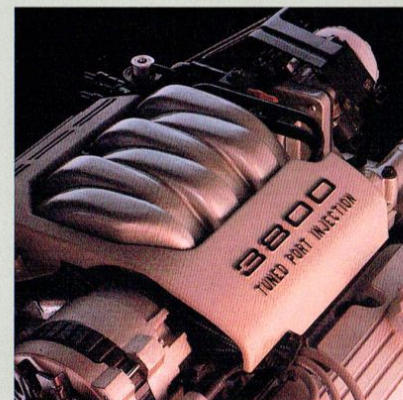


Reatta Convertible.



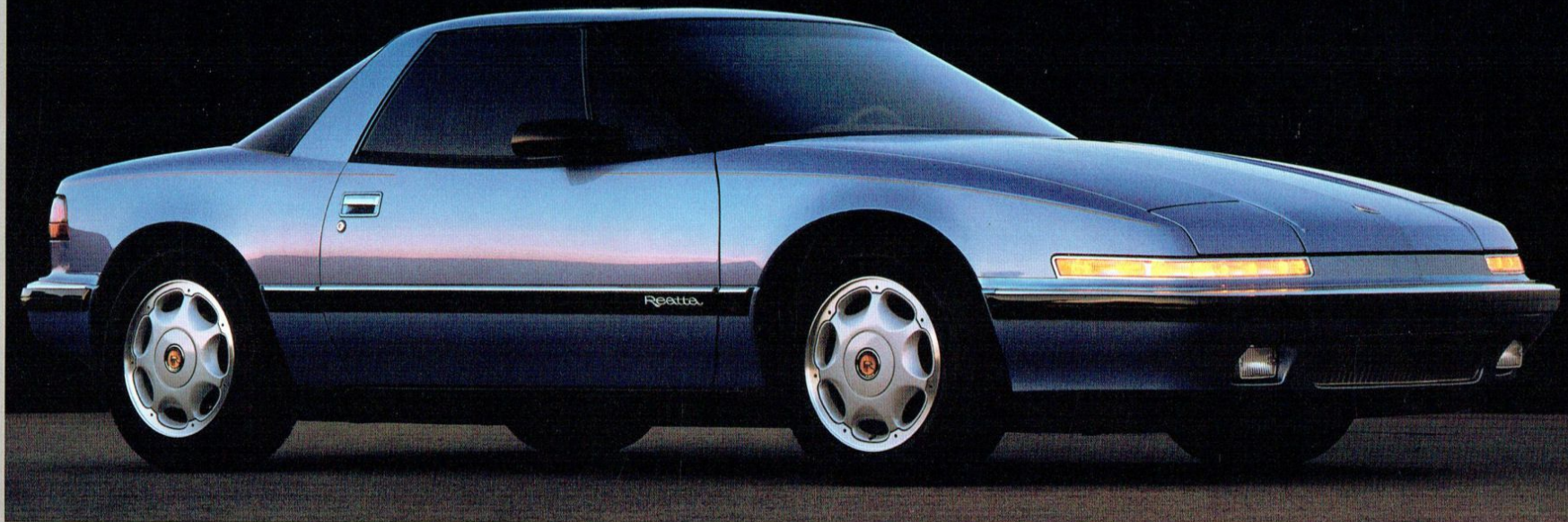
Reatta offers you the exhilaration that comes from commanding a powerful 3800 V-6 engine with tuned-port injection. ■ New is an electronically controlled 4-speed automatic with overdrive. ■ The 4-wheel independent Gran Touring suspension offers sporting control and smooth ride. ■ Inside are rich leather seating areas on 6-way power bucket seats, and electronic touch climate control. ■ Twilight Sentinel headlamp control and remote keyless entry system add convenience while the PASS-Key® theft-deterrent system adds to your peace of mind. The premium Concert Sound II speaker system adds to your pleasure.

The 3800 V-6 with tuned-port injection and the new electronically controlled 4-speed automatic transmission with overdrive combine for smooth power in town and on the road.

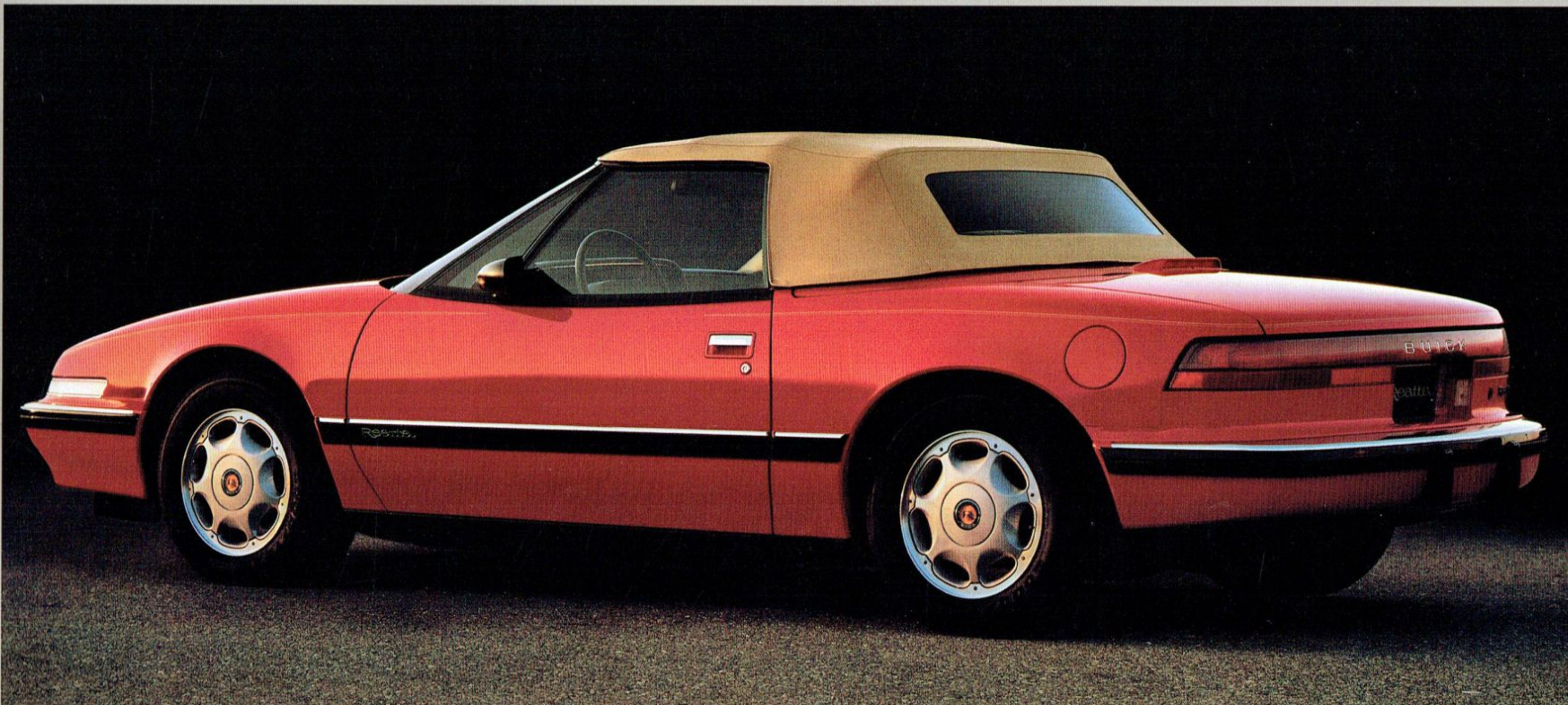


Reatta's instrument panel has an electronic digital speedometer plus analog instrumentation for quick, accurate information.

The Reatta interior is sporting as well as luxurious with Ultra Soft leather and Sierra vinyl upholstery and electrically adjustable bucket seats.

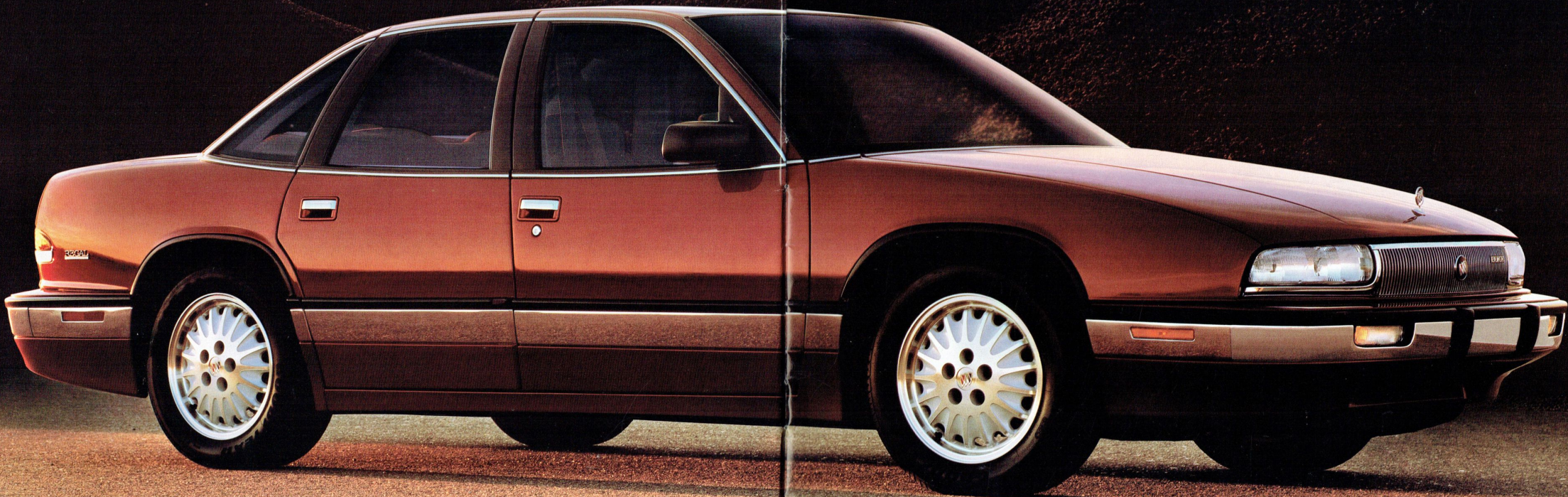


Meticulous engineering and lavish appointments give the Reatta Coupe the performance and luxury that make it the premium American two-seater. The Reatta Convertible has a hard tonneau cover and an easy-to-raise top. The glass backlight includes a defogger.



REGAL SEDAN

The totally new Regal® Sedan is another shining example of Buick's entry into the demanding world of world-class quality. It's built to please you and your family, while its style and sophistication will attract approving glances wherever it takes you.



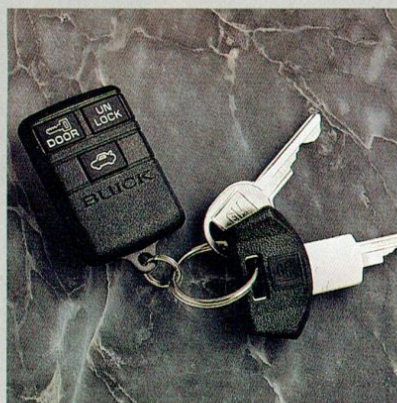


A 3.1-litre V-6 with multi-port fuel injection or an available 3800 V-6 with tuned-port injection (standard on Gran Sport) gives Regal real performance. ■ Power 4-wheel disc brakes provide stopping power and the 4-speed automatic transmission with overdrive offers in-town responsiveness and comfortable highway cruising. ■ Regal's 4-wheel independent DynaRide® suspension (Gran Touring suspension on the Gran Sport Sedan) is there for smooth responsive handling. ■ Air conditioning and Soft-Ray tinted glass all around help keep you comfortable. ■ Buick Regal Sedans...three of the reasons Buick is the new symbol for quality in America.

Regal's DynaRide suspension uses the latest suspension technology to provide smooth ride and outstanding control.



Regal Limited Sedan.

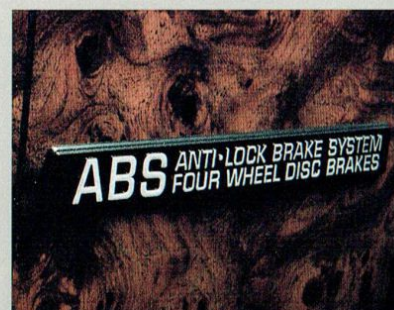
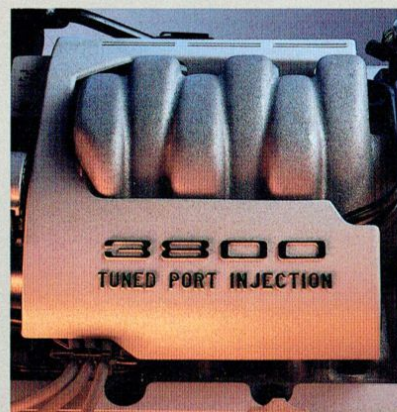


The remote keyless entry system available on Regal adds to both your convenience and your security.

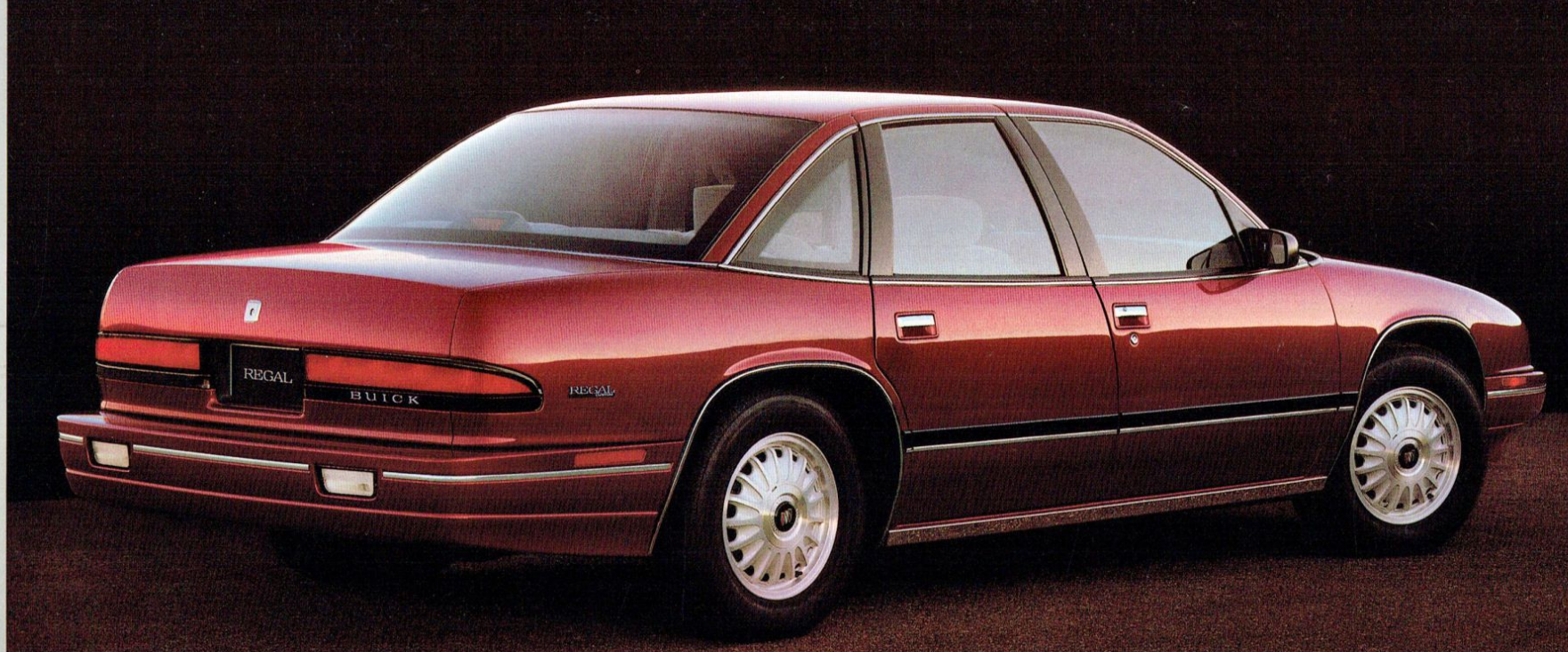
The available 3800 V-6 engine with tuned-port injection is standard on the Regal Gran Sport.



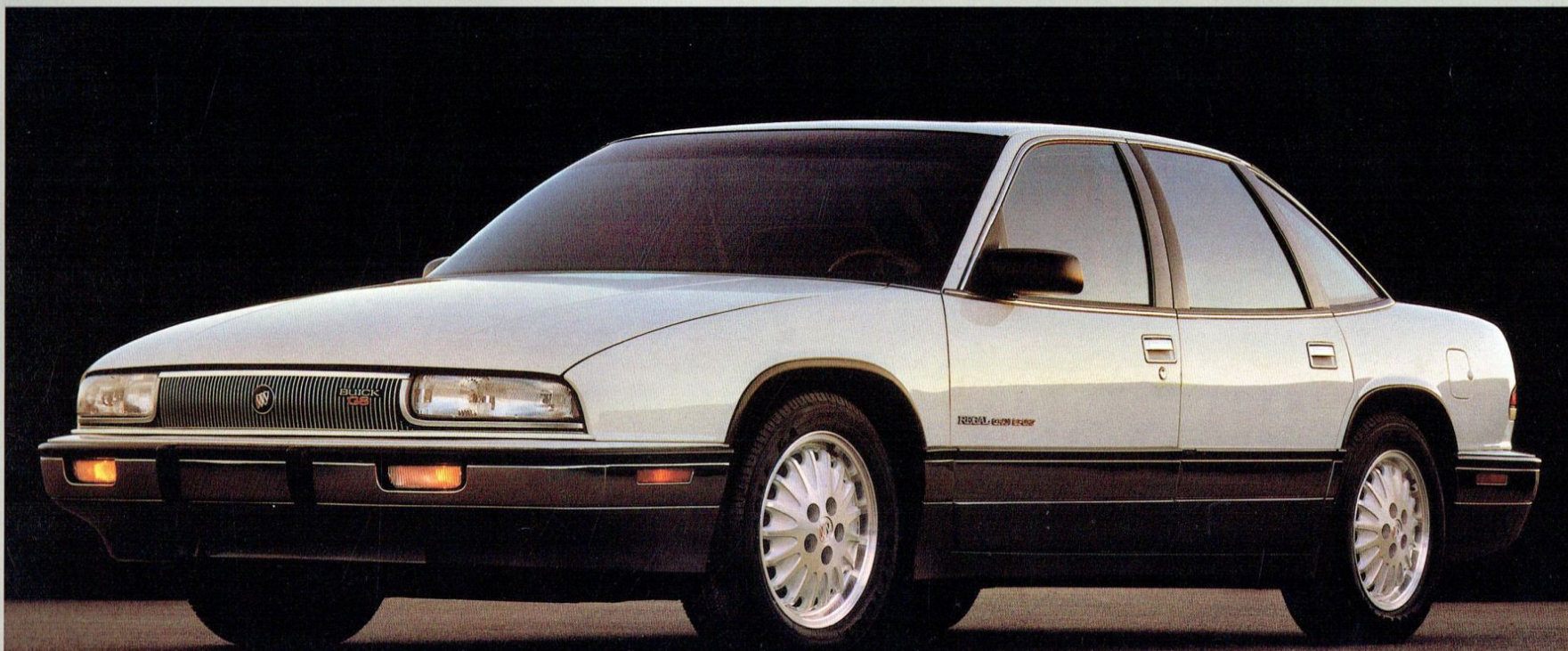
New analog gauges, standard on Regal Limited and GS models, are as handsome as they are easy to read.



Four-wheel disc brakes are standard on Regal, and the available anti-lock braking system (ABS) provides an added measure of control.

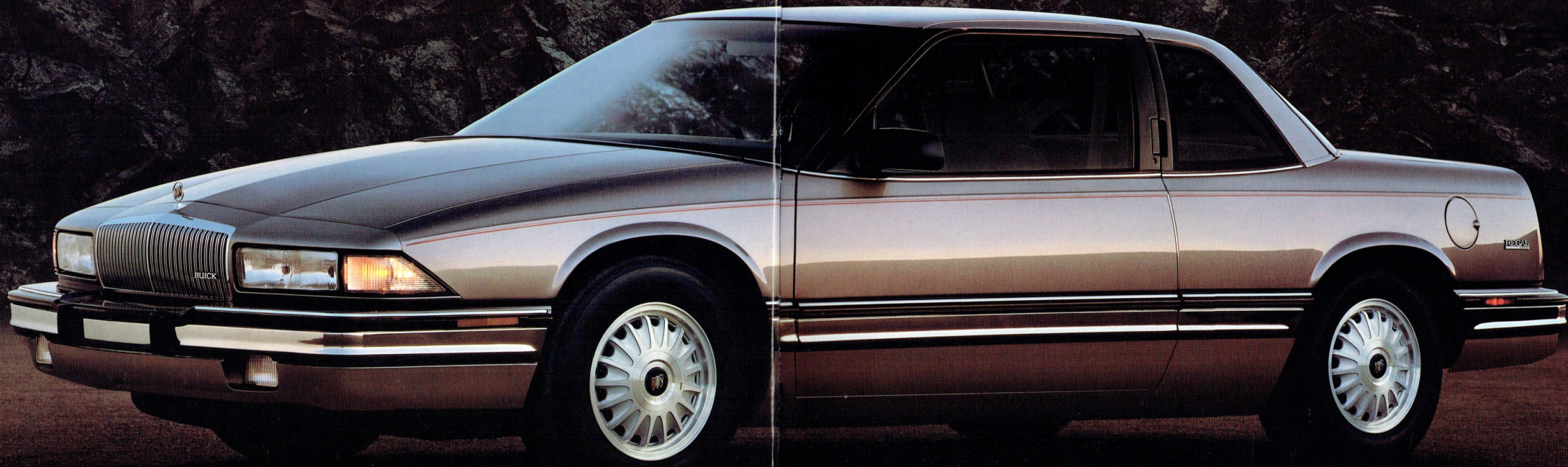


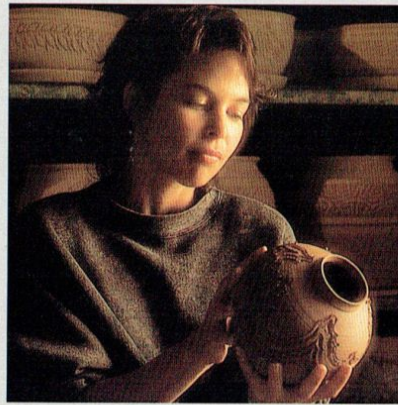
The handsome Regal Custom Sedan, shown with available aluminum wheels, is a sleek, beautifully appointed family car. The Regal Gran Sport Sedan is for those whose tastes are as sporting as they are elegant.



REGAL COUPE

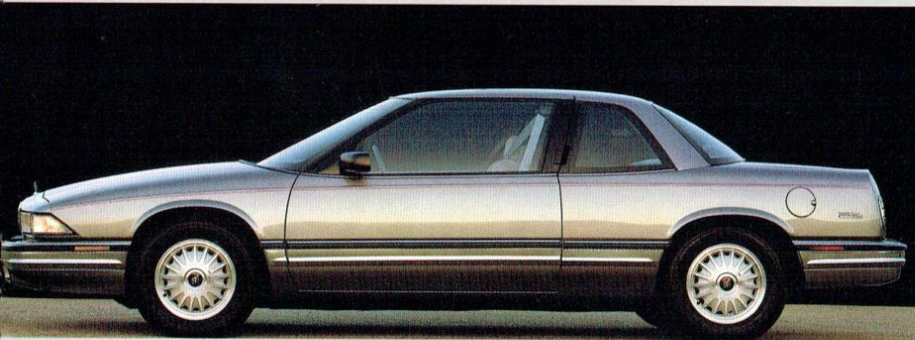
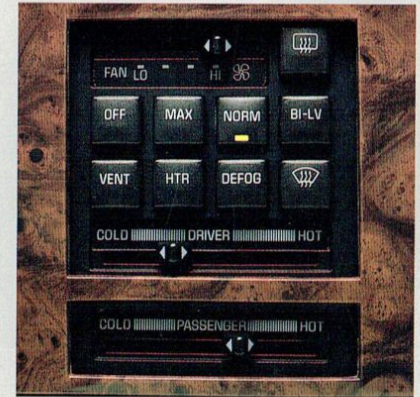
The beautiful understated good looks you want and the comfort and luxury you expect in a Buick are all here in the sleek and sporting Regal Coupe.





The Regal Coupe is a graceful, exhilarating automobile with a dashing flair all its own. ■ Take it out on the road and you are in for a premium driving experience. Regal slips through the air smoothly and quietly while the standard 3.1-litre V-6 or the available 3800 V-6 with tuned-port injection (standard on Gran Sport) moves you along in an exhilarating rush. ■ A digital speedometer, standard on the Custom model, combines with carefully located comfort, convenience and operating controls to make driving a pleasure. Limited and Gran Sport models feature a new quartz analog gage cluster. ■ Regal. It's sleek, substantial, very Buick.

The dual ComforTemp climate control available in Regal lets you and your front-seat passenger select separate temperature settings.

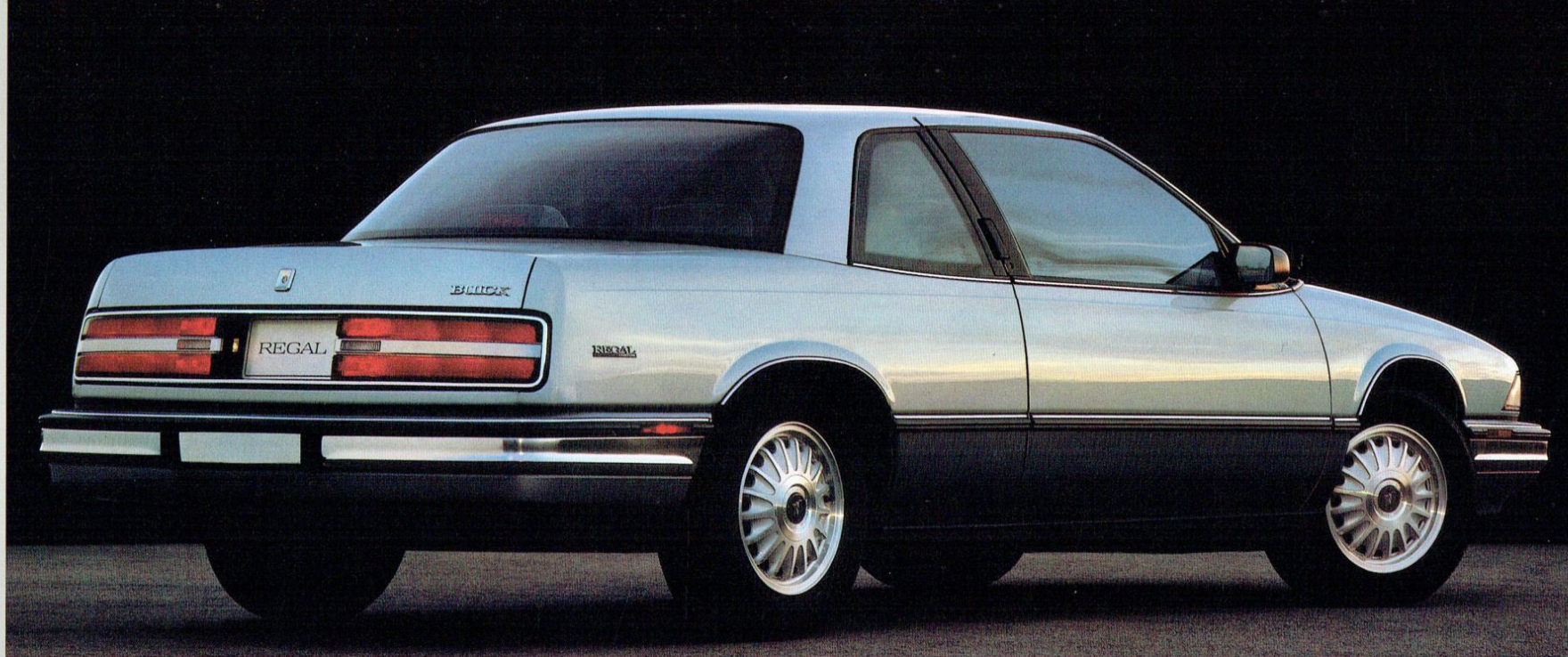


Regal Limited Coupe.



Available steering wheel radio controls and complete information are a fingertip away in the Regal's instrument panel.

The Regal Limited Coupe comes with an interior in rich fabric and tasteful touches of simulated woodgrain.

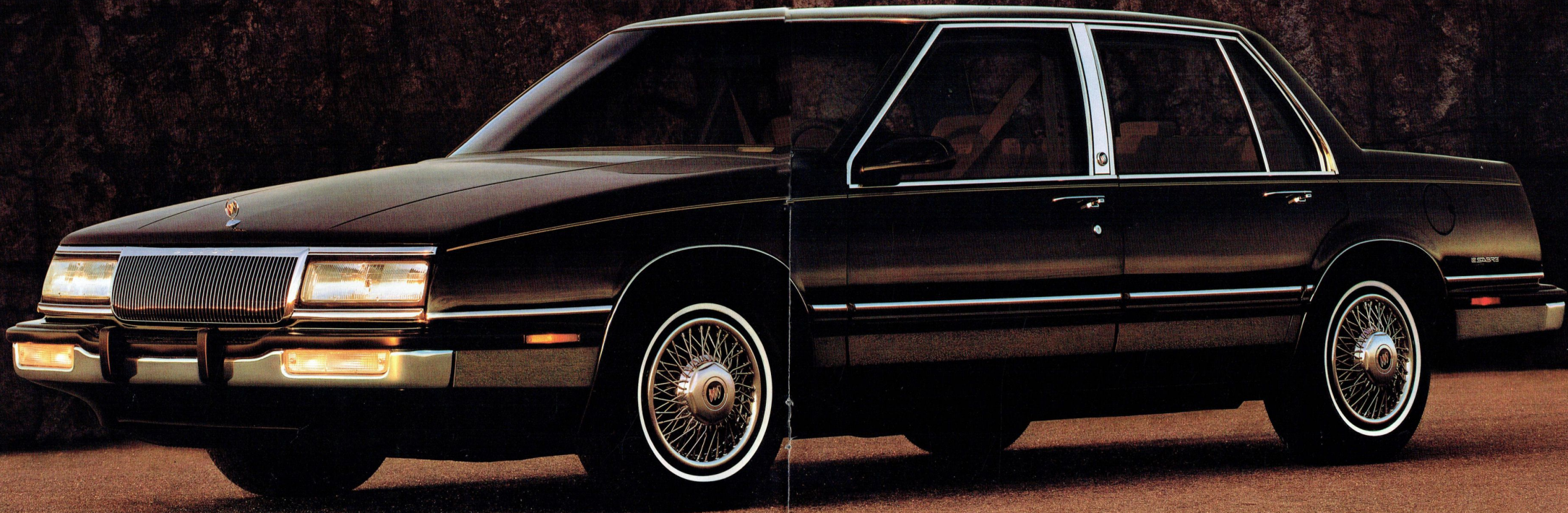


The Regal Custom Coupe, shown with available aluminum wheels, is a pleasing example of Buick quality and style. It's all business, and it looks the part. The Regal Gran Sport Coupe.



LE SABRE

The full-size, 6-passenger LeSabre® has looks, comfort, performance and a full measure of Buick quality to please you and your family. It stands as current testimony to the fact that Buick is the new symbol for quality in America.



Winter or summer, pick a setting on LeSabre's available electronic touch climate control and you'll always be comfortable.



*According to J.D. Power and Associates 1990 Initial Quality Survey.SM Based on owner-reported problems during the first 90 days of ownership.

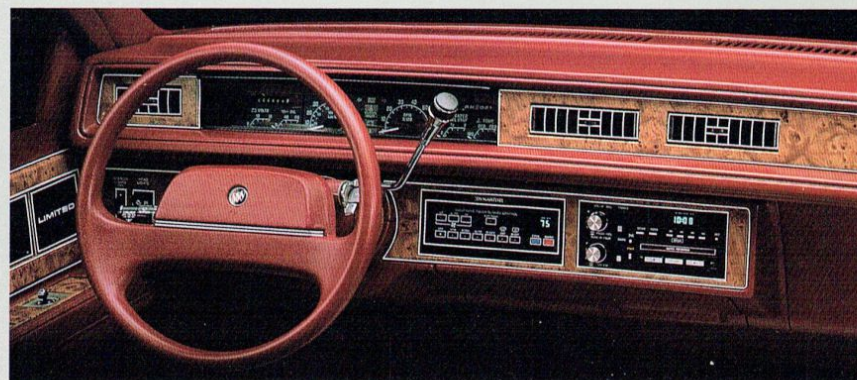
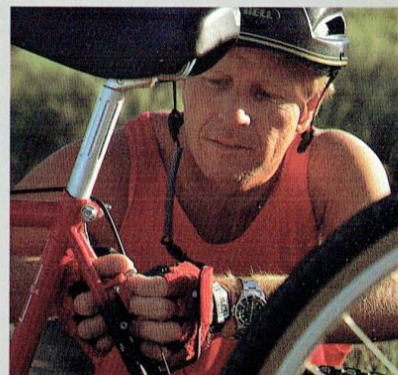


LeSabre Limited Sedan.



Surveys confirm that LeSabre is the highest-rated American car in the most important measure of quality: trouble-free operation.*

- It is available as a coupe or sedan in three levels of trim.
- Its 3800 V-6 engine with sequential-port fuel injection is coupled to a 4-speed automatic transmission with overdrive.
- DynaRide® 4-wheel independent suspension provides a smooth ride with responsive handling.
- The sound system is an ETR® AM-FM stereo with seek and scan, dual front and rear speakers and a digital clock.
- You and your family are going to feel very much at home in the LeSabre.



The best things in life are simple, functional and beautiful, like the LeSabre's instrument panel, shown with available analog gage cluster.

Inside the Buick LeSabre Limited: full-size comfort with sophistication and luxury for your family.

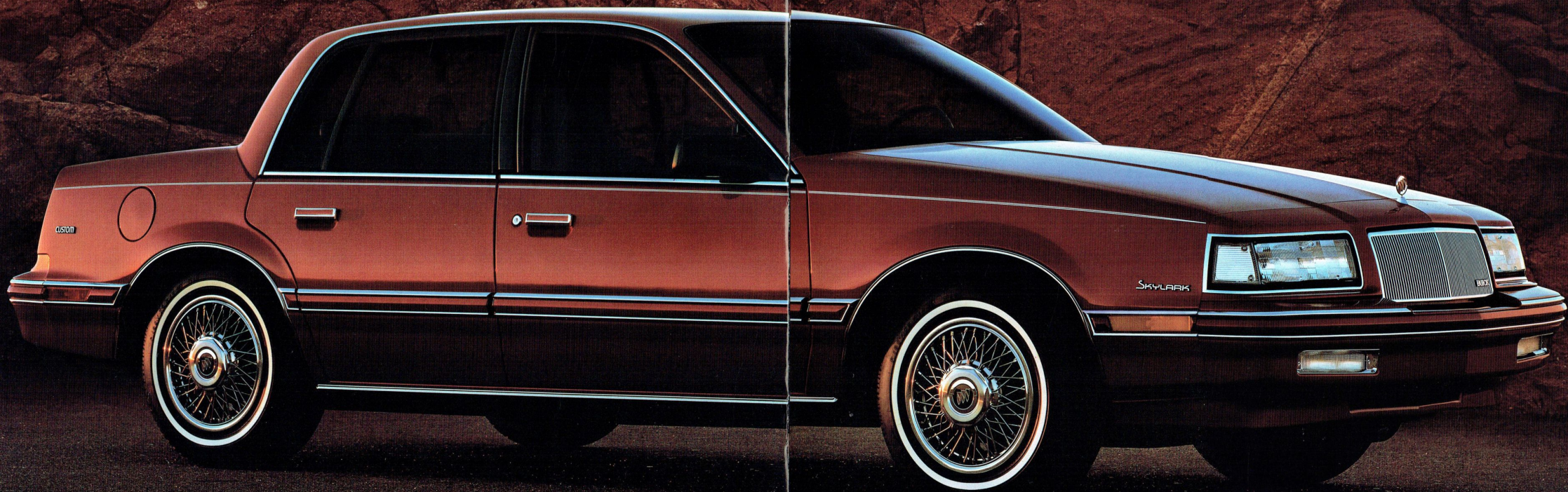


The LeSabre Custom Sedan, shown with available aluminum wheels, is a full-size, 6-passenger automobile with the comfort and quality your family will appreciate. The LeSabre Coupe is a personal car that provides the luxury of room and comfort for six.



SKYLARK

If you expect an automobile to deliver comfort, quality, and real driving pleasure every time you drive it, Skylark® is a fitting choice.

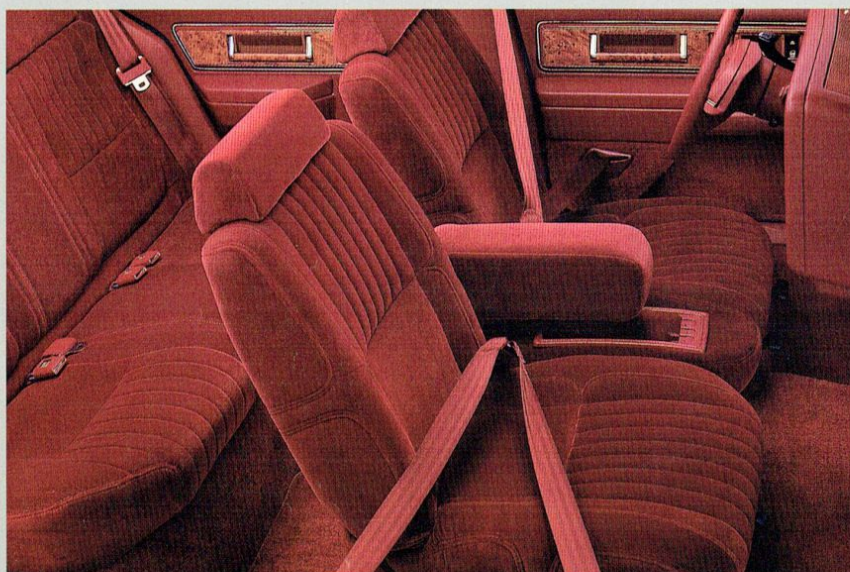




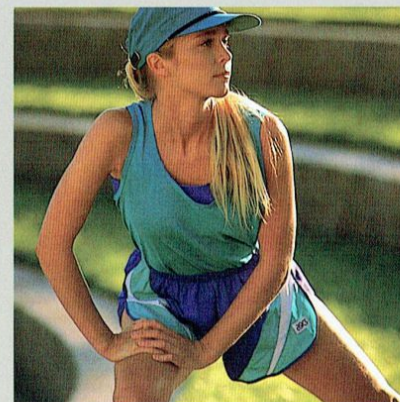
The Skylark instrument panel is stylish, easy to use and full of easy-to-read information.



The Skylark Sedan represents Buick quality and style with exceptional value built in.



The Skylark is an investment in satisfaction. It starts from the inside, with premium accommodations. ■ Depending upon model, handsome cloth or velour upholstery is offered in every Skylark. ■ A choice of engines starts with the standard 2.5-litre fuel-injected Tech IV. From here, you can move up to the available dual overhead cam, 2.3-litre Quad 4 with multi-port fuel injection or the smooth 3300 V-6 also with multi-port fuel injection. ■ Tinted glass, full carpeting and smooth DynaRide® suspension (Gran Touring suspension on the Gran Sport Coupe) are standard. ■ Skylark has Buick quality and style written all over it.

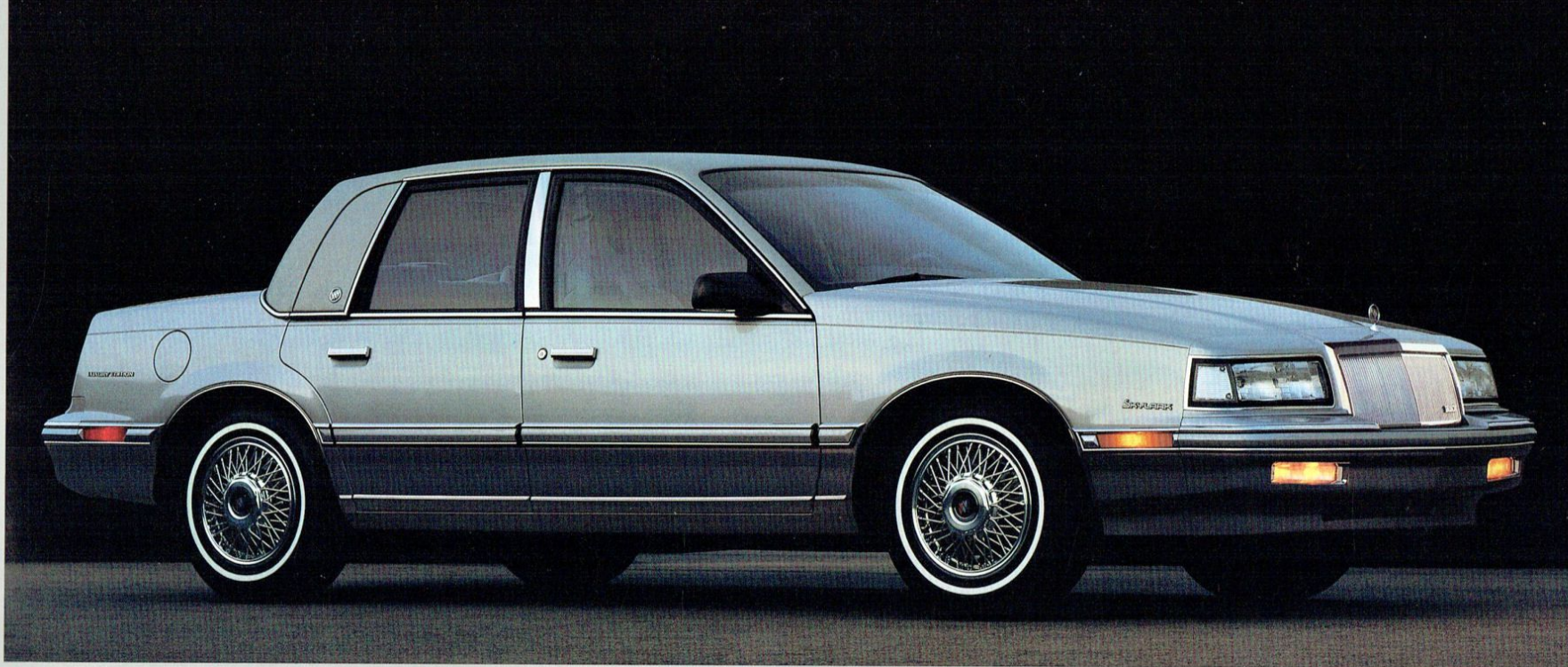


The fold-down rear seat lets you reach the trunk from the passenger compartment.



The Gran Sport Coupe brings exciting, sporty style to the Skylark's comfort and quality.

The Skylark Custom Sedan is what Buick is all about: understated, stylish and sophisticated.

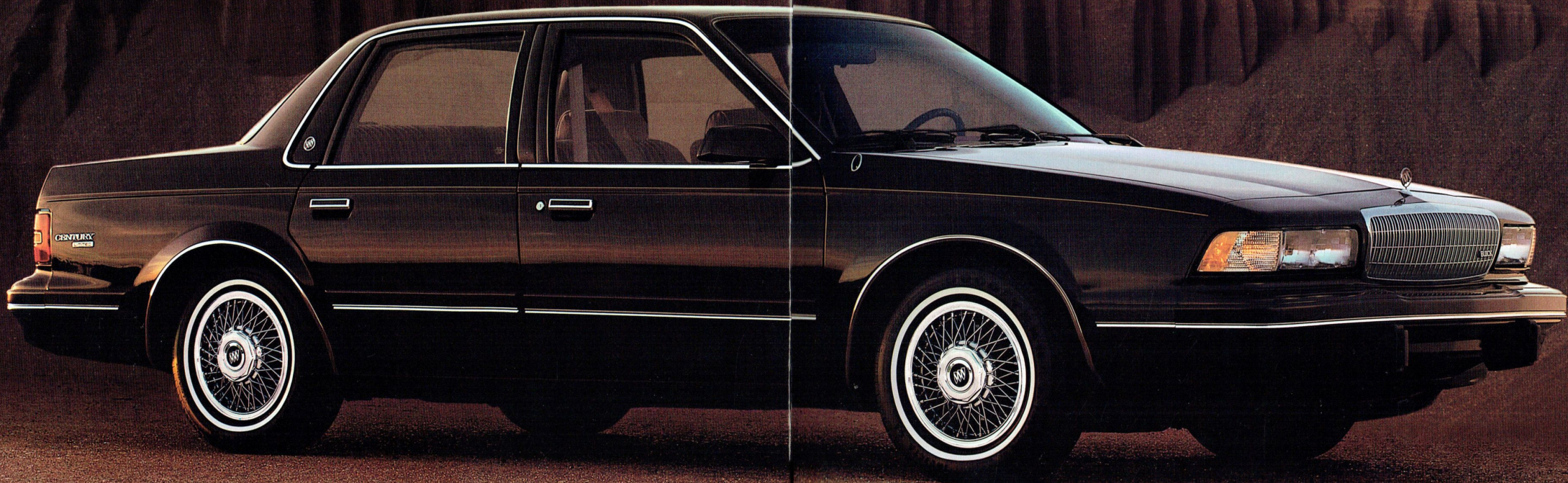


The ultimate in Skylark sophistication and comfort is the Luxury Edition Sedan.
Handsome, stylish and all Buick. That's the Skylark Custom Coupe.



CENTURY

The beauty of the Buick Century® is not just its styling and comfort. It is also in the way Century delivers real value along with proven Buick quality.

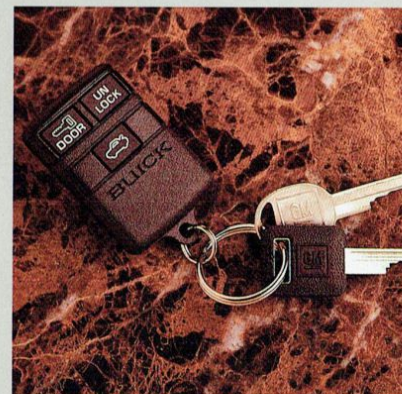




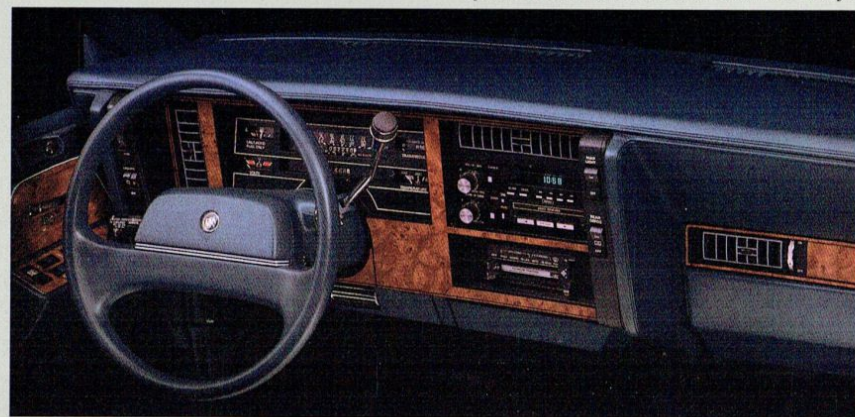
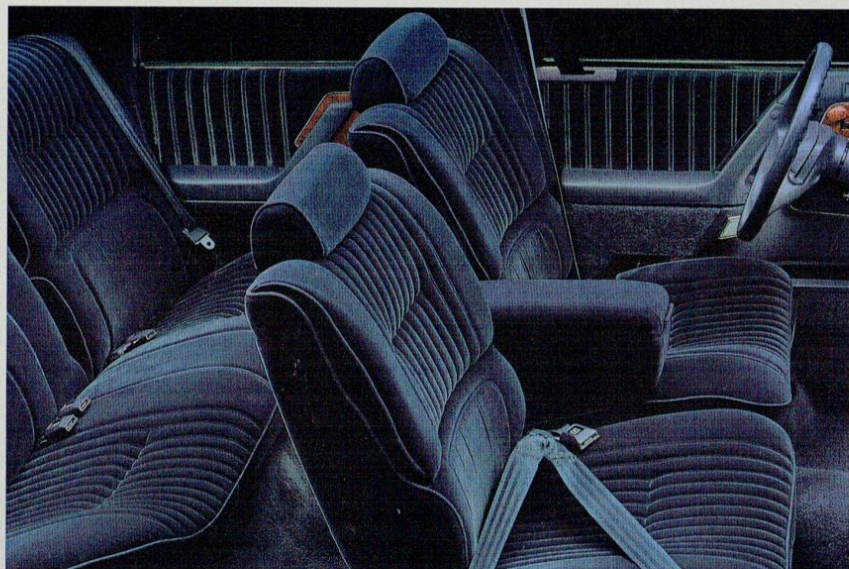
The smooth, responsive DynaRide® suspension on the coupe and sedan and heavy-duty suspension on the station wagon make them a pleasure on the road. ■ Air conditioning, dual outside mirrors with remote control on the driver's side and automatic front safety-belt system are all standard. ■ And now you can order the available luxury of remote keyless entry system, steering wheel radio controls, and more. ■ The 2.5-litre Tech IV engine has brisk performance, and the available 3300 V-6 with multi-port fuel injection offers additional power. ■ Century. American quality has never looked—or felt—better.



Century Limited Sedan.

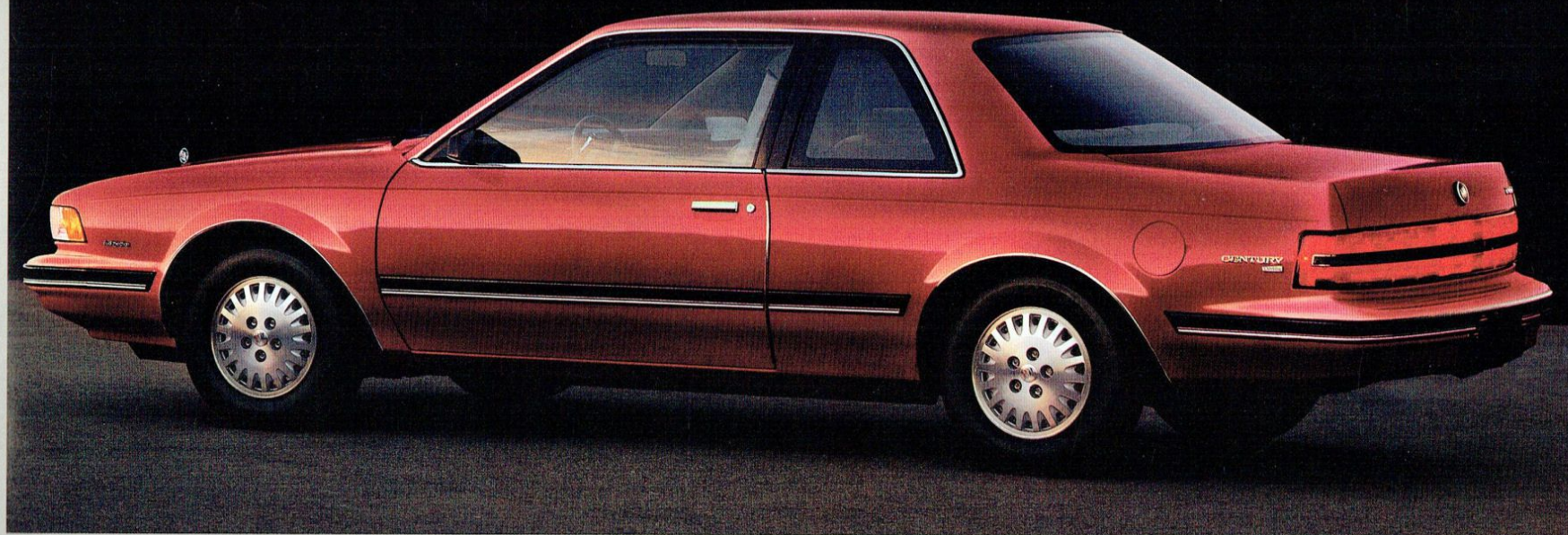


Century's available remote keyless entry system adds both convenience and security.



Control, comfort and ease of use are the guiding principles behind the design of the Century instrument panel.

Carefully tailored, beautifully finished, the Century Limited Sedan interior bespeaks premium tastes.

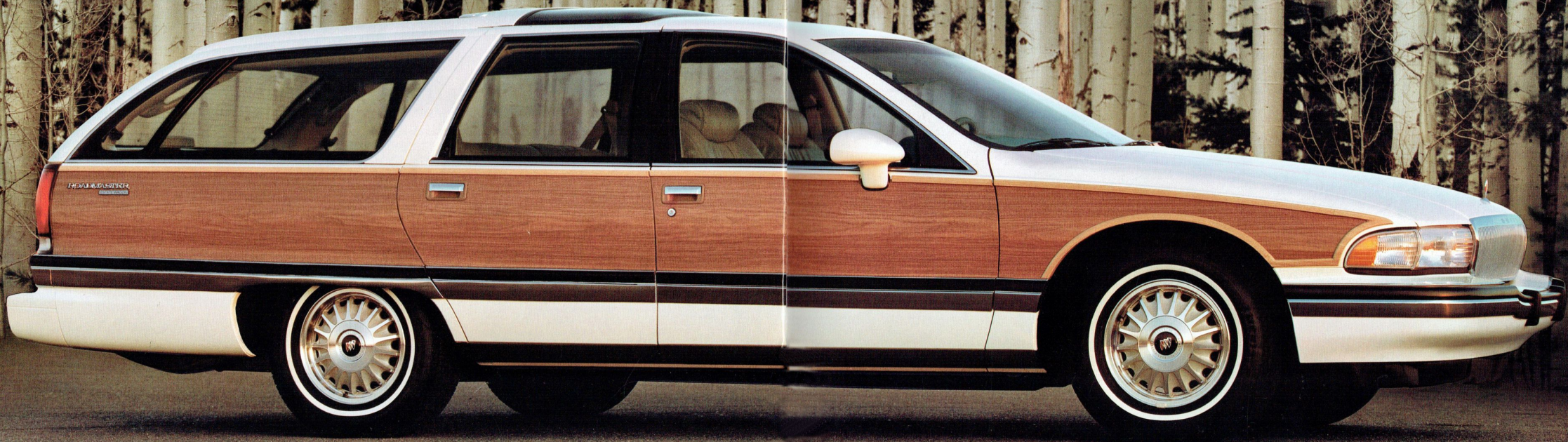


The Custom Coupe brings a special sporty style to the quality and comfort of the Century. Practicality with luxury and premium value. That's the unique appeal of the Century Limited Wagon.



ROADMASTER ESTATE WAGON

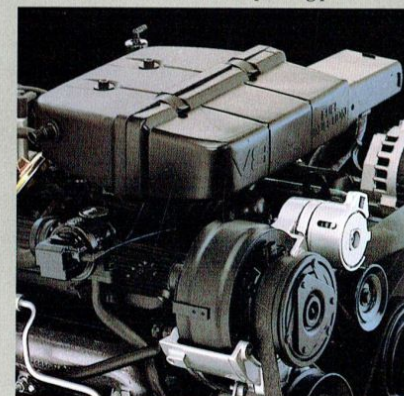
Every station wagon should be as comfortable, practical and versatile as the new Roadmaster Estate Wagon.™ Pure Buick...the ultimate wagon.



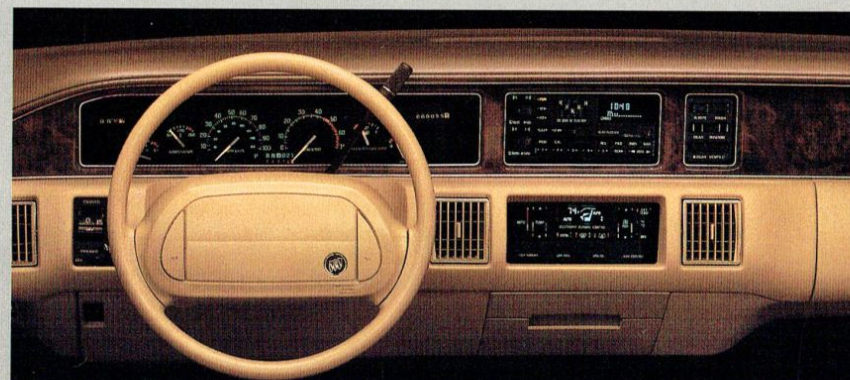


The Roadmaster Estate Wagon's capabilities begin with its 5.0-litre V-8 electronic fuel-injected engine connected to a 4-speed automatic transmission with overdrive. ■ The tailgate opens two ways for easy loading and unloading and there is an adjustable roof rack for added convenience. ■ Standard features include a glass vista roof, reclining seatbacks, covered visor vanity mirrors for driver and passenger and an instrument panel with low-fluid indicators for oil, coolant, fuel and washer fluid. ■ Since it is a Buick, the quality is built in to make this wagon a trusted member of the family for years to come.

The Roadmaster Estate Wagon is powered by a smooth, reliable 5.0-litre V-8 for excellent acceleration and pulling power.

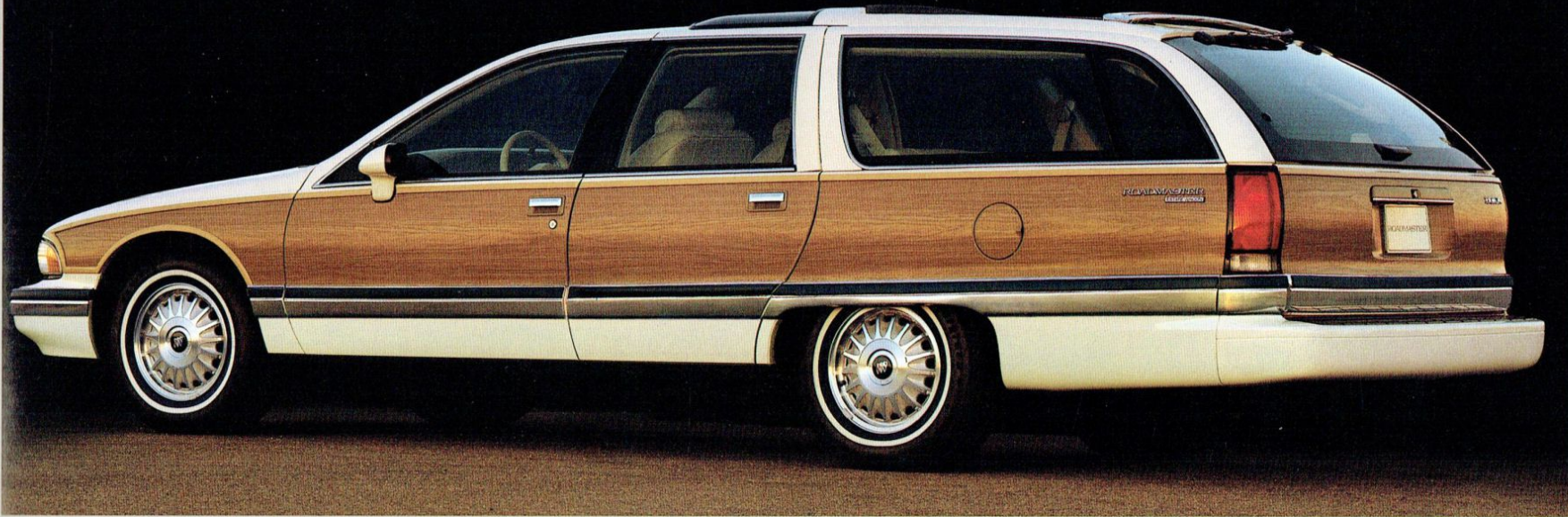


Roadmaster Estate Wagon.

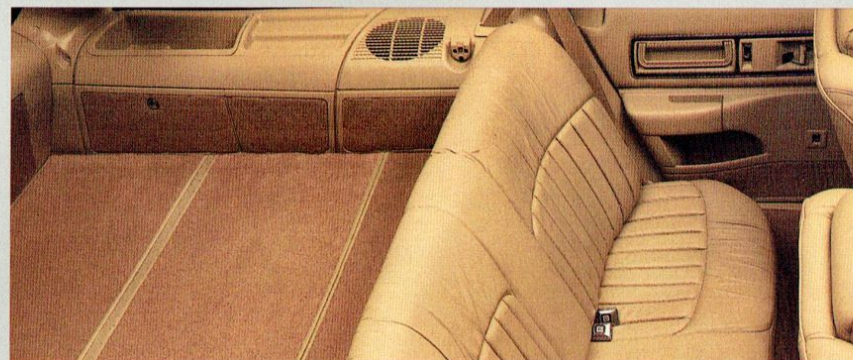
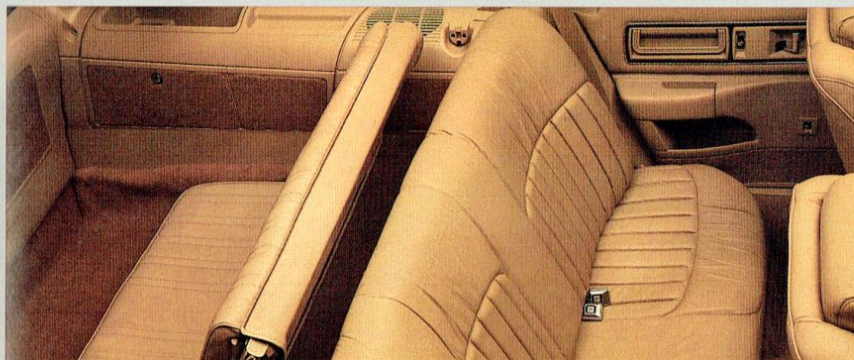


Complete, clear information is available from the Roadmaster Estate Wagon's analog gage cluster.

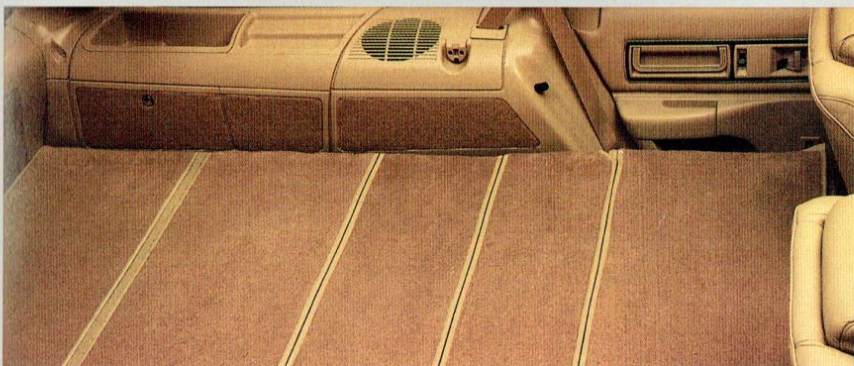
The interior of Sierra grain leather and doeskin vinyl available in the Roadmaster Estate Wagon is both handsome and practical.



The Roadmaster Estate Wagon is sleek, substantial and equipped to haul big loads in comfort and luxury.

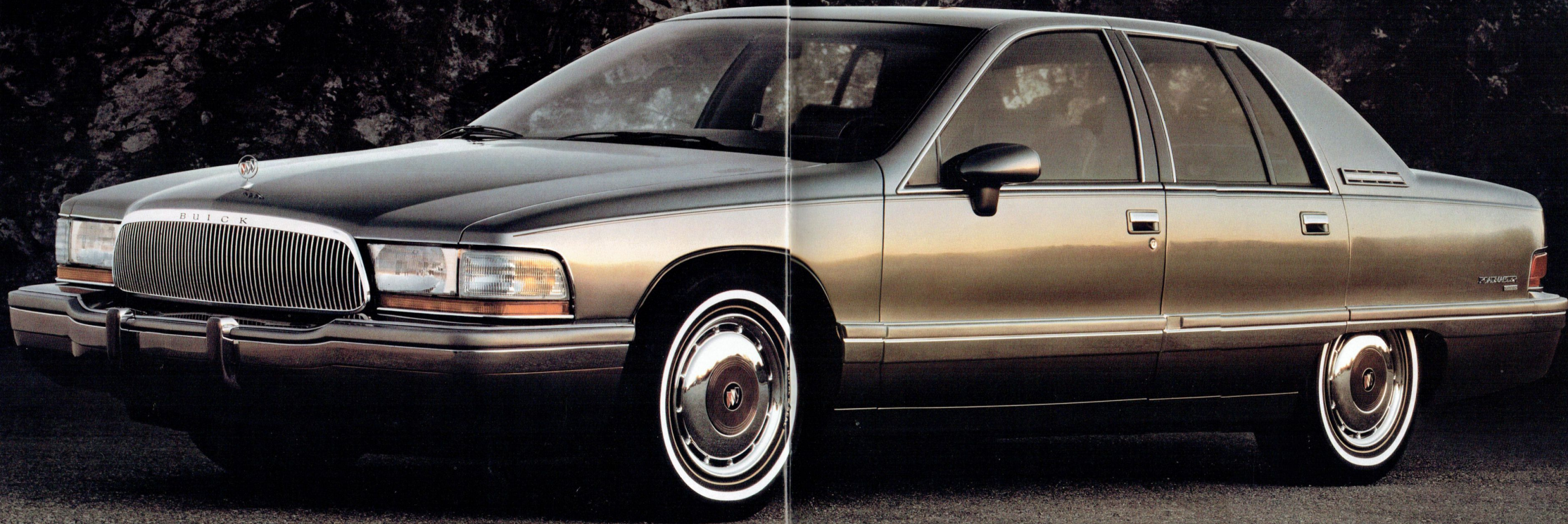


The vinyl third seat brings passenger capacity up to eight, or folds out of the way for cargo room. For maximum cargo capacity of 92.4 cubic feet the second seat folds out of the way.



ROADMASTER SEDAN

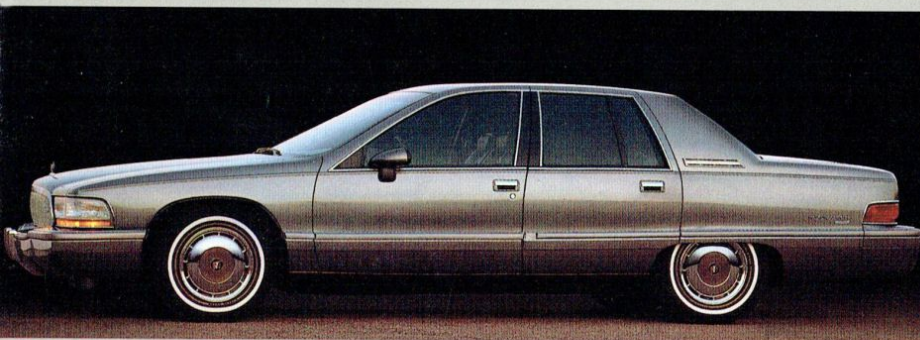
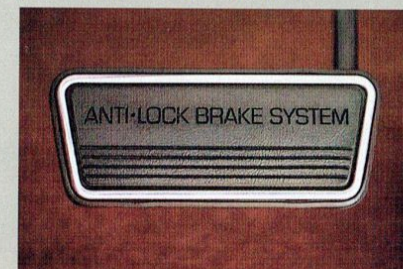
If you are one of the millions of Americans with a soft spot in your heart for the original Buick Roadmaster,™ portholes and all, this is for you.



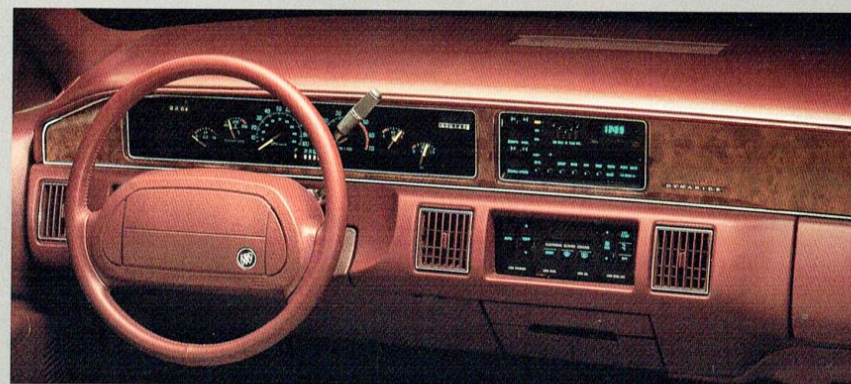


The 1992 Buick Roadmaster, and Roadmaster Limited Sedans (available in spring of 1991) are the rebirth of a classic, better than ever for the '90s. ■ The powerplant is a proven 5.7-litre V-8 with electronic fuel injection, connected to a 4-speed automatic transmission with overdrive. ■ The ride and handling are solid, with rear-wheel drive and DynaRide® suspension. ■ Anti-lock braking is standard, for improved steering control and stopping power in adverse conditions. ■ Tilt steering column, cruise control, power windows and remote trunk lock release are all standard. ■ Roadmaster remains true to the original: an automobile of substance and quality.

Roadmaster's standard anti-lock braking system (ABS) helps maintain steering control and stopping power in adverse road conditions.

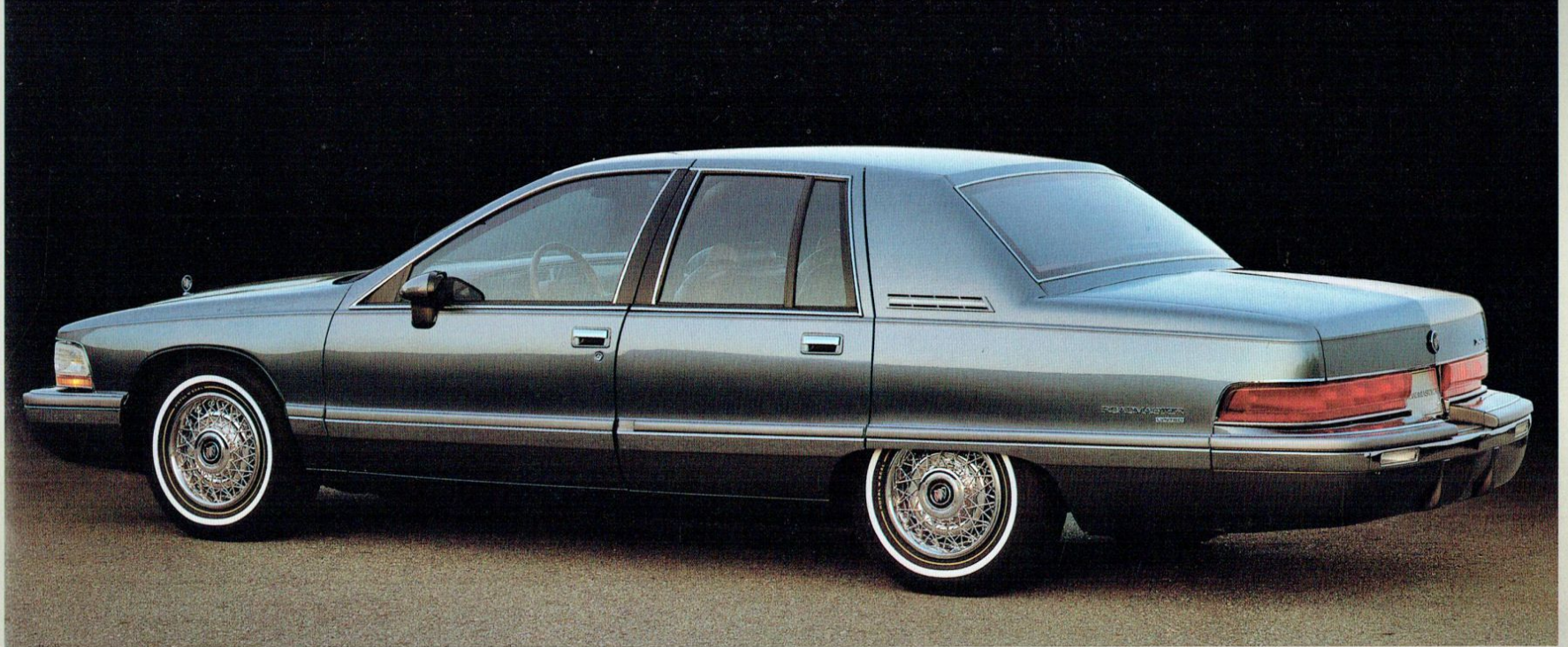


Roadmaster Limited Sedan.



Complete information, quickly, is what the Roadmaster's analog instrument panel has to offer. It includes gages for oil, coolant temperature, volts and a trip odometer.

Roadmaster offers room, luxury and all the modern conveniences. Shown in the Roadmaster Limited trim is available Ultra Soft leather in the seating areas with suede accents.



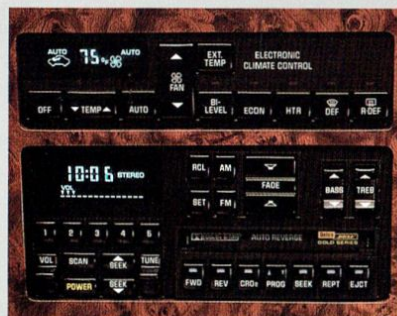
Roadmaster is everything you remember about the classic Buick of the same name, plus the benefits of today's technology. Luxury, comfort, style and pure Buick quality make the Roadmaster a pleasure to own and drive.



Buick has premium sound systems for your entertainment on the road. And refinements like the Concert Sound II speaker system, Delco/Bose Gold Series Music System, steering wheel controls and CD players are available for convenience and audiophile-level sound quality.



Concert Sound II speaker system. The Concert Sound II speaker system provides rich, pure sound reproduction. Dual front extended-range woofer/tweeter units are matched by dual rear extended-range speakers to fill your Buick with resonant sound and a beautiful stereo experience. The available system is configured for the acoustics of the specific Buick in which it is installed.



Delco/Bose Gold Series Music System. Available on Park Avenue and Riviera is an acoustically tailored, actively equalized sound system that combines easy use with exceptional sound. Dual front and rear speakers are specifically matched to the system. In Park Avenue and Park Avenue Ultra, sensors increase the volume as car speed increases, which allows you to set and forget the volume control.



The available compact disc players. There is a compact disc system available for most Buicks, to bring crisp, low-noise digital sound reproduction and the convenience of compact discs with you on the road.



Available steering wheel controls. Without lifting your hands from the steering wheel, you can operate your radio controls. It's easy to use the convenient rocker switches which feature backlighting for added convenience at night. Available on Regal and Century.

MAKE TRAILER TOWING A PREMIUM-QUALITY EXPERIENCE

Towing a trailer can be enjoyable in your Buick. The smooth ride, satisfying power and ability to tow up to 5,000 pounds make taking it all with you a pleasure in a Buick.

SKYLARK

Capacity: 1,000 pounds*

Properly equipped, the Skylark will take you and your pleasures, treasures or needs wherever you want to tow them.

CENTURY, REGAL and LESABRE

Capacity: 1,000 or 2,000 pounds*

Or pick any of these Buicks, from the handsome, spacious Century to the full-size, 6-passenger LeSabre and (depending on how your car is equipped) you'll be able to pull 1,000 or 2,000 pounds of trailer in Buick luxury, comfort and style.

PARK AVENUE & PARK AVENUE ULTRA

Capacity: 3,000 pounds*

The most sophisticated 6-passenger sedans Buick has ever offered can tow up to a 3,000-pound load with grace and style. Standard 3800 V-6 power and automatic load-leveling make it easy.

ROADMASTER

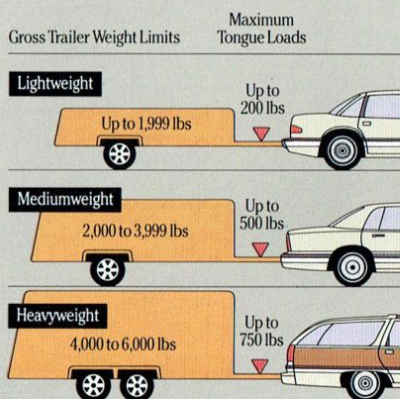
Capacity: 5,000 pounds*

The all-new 1991 Roadmaster Estate Wagon and Sedan can tow up to 5,000 pounds in the comfort of a reborn classic Buick. With rear-wheel drive, solid V-8 power and all the room, ride and luxury of a Roadmaster, trailering is a simple pleasure.

*When properly equipped. Includes weight of trailer, cargo, passengers and equipment.

Classifications and load specifications.

Towing equipment requirements depend on the loaded weight of the trailer and tongue load — the amount of weight transferred to the rear of the car by the hitch. Trailers are classified in the following categories:



Ask your dealer before you tow. For full information, please contact your Buick dealer. There are certain items or equipment required for maximum towing capacity with some models. In addition, there are laws, trailer-towing tips and safety information you should know. Ask your dealer for complete trailer towing information.

1991 Buick Trailer Towing Requirements

| | Engine | Final Drive Ratio | Maximum Gross Trailer Weight (lbs.)* | HD Engine and Transmission Cooling | Automatic Level Control or Air-Lift Shocks |
|--|----------------|-------------------|--------------------------------------|------------------------------------|--|
| Skylark | 2.5L (L68) (1) | 2.84 | 1,000 (2) | | |
| | 2.3L (LD2) | 2.84 | 1,000 (2) | | |
| | 3.3L (LG7) (1) | 2.39 | 1,000 (2) (3) | | |
| Century | 2.5L (LR8)** | 2.84 | 1,000 | | |
| | 3.3L (LG7) | 2.73 | 1,000 (3) 2,000 (3) | | |
| Regal | 3.1L (LHO) | 3.33 | 1,000 (2) | | |
| | 3.8L (L27) | 3.06 | 2,000 (2) | | |
| LeSabre | 3.8L (LN3) | 2.84 (4) | 2,000 (2) | Required | Required |
| Park Avenue Park Avenue Ultra | 3.8L (L27) | 3.06 (4) | 3,000 (2) | Required (4) | Standard |
| 1992 Roadmaster Sedan | 5.7L (LO5) | 3.08 (4) | 5,000 | Recommended (4) | Recommended (4) |
| Roadmaster Estate Wagon | 5.0L (LO3) | 3.23 (4) | 5,000 | Recommended (4) | Recommended (4) |

*Trailer tongue load should be 10% of the maximum trailer weight but should not exceed the load rating specified for that vehicle, engine or hitch combination.

**Not recommended on Century Wagon.

(1) Not recommended for trailer towing on long grades in unusually high temperatures.

(2) Requires Class II frame-mounted trailer hitch.

(3) Trailer towing in mountainous, high-temperature areas requires the installation of the Dunham-Bush Auxiliary Cooler (dealer installed).

(4) Included in required V92 Trailer Towing Package.

Note: Riviera and Reatta models not recommended for trailer towing.

B U I C K B U Y E R' S G U I D E

Now that you have had time to learn about the proven quality and desirable features of the entire lineup, take a little more time to think about which Buick you might like to own and how you would like it equipped.

This Buyer's Guide is a convenient way to do that. It offers you a partial listing of standard and available comfort, convenience and performance features. Consider them and make note of the ones you'd like. Also consider and make note of tire, suspension and engine selections, as well as the interior trim level of your choice.

After noting your preferences, visit your Buick dealer. Learn how easy it can be for you to own a premium-quality American motorcar. Test-drive the Buick of your choice. When you do, you'll be rewarded with ample evidence of why Buick is the new symbol for quality in America.

PARK AVENUE

Model available:

- Park Avenue Sedan
- Park Avenue Ultra Sedan

Standard equipment:

This is a partial list.
See your dealer for details.

Every Park Avenue features:

- 3800 V-6 with tuned-port injection
- Automatic transmission with overdrive (electronically controlled)
- Power front disc/rear drum brakes
- Anti-lock brake system
- Power steering
- DynaRide® 4-wheel independent suspension
- Electric rear-window defogger
- Electric door locks
- Electronic cruise control
- 2-speed windshield wipers with low-speed delay
- Automatic level control
- Air conditioning
- Power windows with driver's "express down" feature

- Solar control glass
- 55/45 front seats
- Manual front-seatback recliners
- 6-way power driver's seat
- PASS®-Key theft-deterrent system
- Overhead console with front-seat reading lights and garage door opener storage
- 15" aluminum wheels (4)
- P205/70R15 steel-belted, radial-ply, all-season blackwall tires
- Supplemental front sunshades
- ETR® AM-FM stereo radio with seek and scan, clock and cassette player
- Driver's side Supplemental Inflatable Restraint system (SIR)
- Tilt steering column

Additional Park Avenue Ultra features:

- Ultra leather/vinyl interior trim
- Leather-wrapped steering wheel
- Driver's lighted visor vanity mirror
- 6-way power passenger seat
- Power front-seatback recliners
- Special exterior paint treatment



- Specific grille
- Special color-keyed 15" aluminum wheels (4)
- Specific smoked tail lamp lenses
- Two rear-seat-passenger lighted vanity mirrors
- Dual automatic ComforTemp climate control

Selected available equipment:

- This is a partial list.
See your dealer for details.
- Compact disc player
 - Delco/Bose Gold Series music system with ETR® AM-FM stereo and cassette
 - Vinyl top
 - Dual automatic ComforTemp climate control
 - Cornering lamps
 - Remote keyless entry system

- Automatic day/night inside rearview mirror
- Twilight Sentinel headlamp control
- Driver's memory seat with memory mirrors
- Analog gage cluster which includes oil-life monitor
- Reminder Package including: coolant, oil and windshield washer fluid level and door ajar
- 3,000-pound Trailer Towing Package
- Starter-interrupt theft-deterrent system

Engine:

| | |
|---------------|----------------------|
| ■ 3800 engine | V-6 with |
| Type | tuned-port injection |
| Horsepower | 170@4800 |
| Torque | 220@3200 |

Dimensions:

Inches unless
otherwise noted

| | Sedans |
|-------------------------------|--------|
| Overall | |
| Length | 205.3 |
| Width | 74.9 |
| Height | 55.7 |
| Wheelbase | 110.8 |
| Front tread | 60.5 |
| Rear tread | 60.2 |
| Interior front | |
| Legroom | 42.0 |
| Headroom | 38.8 |
| Shoulder room | 59.1 |
| Hip room | 55.1 |
| Interior rear | |
| Legroom | 41.6 |
| Headroom | 37.9 |
| Shoulder room | 58.9 |
| Hip room | 54.3 |
| Trunk capacity cu ft | 20.3 |
| Fuel tank capacity gal | 18.0 |

RIVIERA

Model available:

- Riviera Coupe

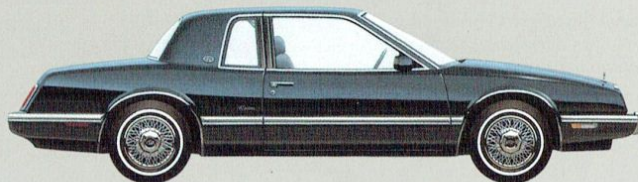
Standard equipment:

This is a partial list.

See your dealer for details.

Every Riviera features:

- 3800 V-6 with tuned-port injection
- Automatic transmission with overdrive (electronically controlled)
- Anti-lock 4-wheel power disc brake system
- Power steering
- DynaRide® 4-wheel independent suspension
- Electronic touch climate control air conditioning
- Electronic instrumentation including speedometer, tachometer, volt, oil, coolant and fuel gages, low-fuel, low-washer fluid and low-oil indicators and trip odometer
- Automatic level control
- Tilt steering column
- Operating console with armrest



- Electronic cruise control
- Electric rear-window defogger
- Electric door locks
- Power windows with floodlit controls
- Soft-Ray tinted glass
- ETR® AM-FM stereo radio with seek and scan and clock, cassette tape player with auto reverse, search and repeat, Concert Sound speakers
- Reclining front bucket seats
- Electric trunk lock release
- 2-speed windshield wipers with low-speed delay
- Body-color door edge guards
- 15-inch wheels and whitewall tires
- Leather-wrapped steering wheel with Supplemental Inflatable Restraint system (SIR)

- Deluxe trunk trim
- PASS Key® theft-deterrent system
- Coach lamps
- Custom locking wire wheelcovers
- Cornering lamps

Selected available equipment:

This is a partial list.

See your dealer for details.

- ETR® AM stereo-FM stereo radio with compact disc player, cassette tape player and graphic equalizer. (Receives C-Quam® AM stereo broadcasts. Most AM stations across the country broadcast in C-Quam but some do not. Check your local stations for compatibility in your area.)
- Delco/Bose Gold Series music system

with ETR® AM stereo-FM stereo radio (receives C-Quam) cassette, and compact disc player

- 14-way adjustable driver bucket seat
- 6-way power front passenger seat with recliner
- Electric trunk pull down
- Remote keyless entry system with automatic door locks
- Twilight Sentinel headlamp control
- Automatic day/night inside rearview mirror
- Gran Touring Package
- Astrorooftop
- Landau top
- Lower accent paint
- Riviera Appearance Package
- 15" aluminum wheels (4)

Engine:

| | |
|---------------|-------------------------------|
| ■ 3800 engine | V-6 with tuned-port injection |
| Type | |
| Horsepower | 170@4800 |
| Torque | 220@3200 |

Dimensions:

Inches unless otherwise noted

Coupe

Overall

| | |
|-------------|-------|
| Length | 198.3 |
| Width | 71.7 |
| Height | 53.6 |
| Wheelbase | 108.0 |
| Front tread | 59.9 |
| Rear tread | 59.9 |

Interior front

| | |
|---------------|------|
| Legroom | 42.7 |
| Headroom | 37.8 |
| Shoulder room | 57.9 |
| Hip room | 55.9 |

Interior rear

| | |
|---------------|------|
| Legroom | 35.6 |
| Headroom | 37.8 |
| Shoulder room | 57.4 |
| Hip room | 55.4 |

Trunk capacity cu ft

14.4

Fuel tank capacity gal

18.8

REATA

Models available:

- Reatta Coupe
- Reatta Convertible

Standard equipment:

This is a partial list.

See your dealer for details.

Every Reatta features:

- 3800 V-6 with tuned-port injection
- Stainless steel exhaust system with dual outlets
- Automatic transmission with overdrive (electronically controlled)
- Anti-lock 4-wheel power disc brake system
- Fast-ratio power steering
- Independent 4-wheel Gran Touring suspension
- Electronic touch climate control air conditioning
- Electronic instrumentation including speedometer, tachometer, volt, oil, coolant and fuel gages, low-fuel, low-washer fluid and low-oil indicators and trip odometer

- Heavy-duty battery
- Front and rear stabilizer bars
- Tilt steering column
- Leather-wrapped steering wheel with Supplemental Inflatable Restraint system (SIR)
- Operating console with armrest
- Electronic cruise control
- Electric rear-window defogger
- Power windows with floodlit controls
- Soft-Ray tinted glass
- ETR® AM stereo-FM stereo radio with seek and scan, graphic equalizer, cassette tape player with auto reverse, search/repeat, clock, 6-speaker Concert Sound speakers and automatic power antenna. (This unit receives C-Quam® AM broadcasts. Most AM stereo stations across the country broadcast in C-Quam but some do not. Check with your local stations for compatibility in your area.)
- Front and side window defogger outlets
- Door courtesy and warning lights
- Manual reclining bucket seat with leather in the seating areas

- 6-way power seats
- Electric trunk lock release
- 2-speed windshield wipers with low-speed delay feature
- 16" aluminum wheels (4)
- P215/60R16 steel-belted, radial-ply Goodyear Eagle GA blackwall tires
- Retractable dual headlamps
- Anti-slip front carpet savers
- Electric fuel filler door release
- Twilight Sentinel headlamp control
- Cornering lamps
- Front fog lamps
- Rearview mirror with front-seat reading lights
- Deluxe black, electric, outside rearview mirrors (left and right remote) left heated
- Clearcoat paint with chip-resistant primer
- Lockable rear floor storage compartments (2)
- Extendible slide-out sunshades
- PASS Key® theft-deterrent system
- Interior, lockable trunk access door (Coupe)

- Remote keyless entry system with automatic door locks
- Retained accessory power
- Lighted visor vanity mirrors (driver and passenger)
- Body accent stripes

Selected available equipment:

- Electric sliding steel Astrorooftop
- 16-way adjustable driver's seat
- Compact disc player

Engine:

| | |
|---------------|-------------------------------|
| ■ 3800 engine | V-6 with tuned-port injection |
| Type | |
| Horsepower | 170@4800 |
| Torque | 220@3200 |

Dimensions:

Inches unless otherwise noted

Coupe
Convertible

Overall

| | | |
|-------------|-------|-------|
| Length | 183.5 | 183.5 |
| Width | 73.0 | 73.0 |
| Height | 51.2 | 51.2 |
| Wheelbase | 98.5 | 98.5 |
| Front tread | 60.3 | 60.3 |
| Rear tread | 60.3 | 60.3 |

Interior

| | | |
|---------------|------|------|
| Legroom | 43.1 | 43.1 |
| Headroom | 36.9 | 36.9 |
| Shoulder room | 57.0 | 57.0 |
| Hip room | 53.9 | 53.9 |

Trunk capacity cu ft

10.5 10.0

Fuel tank capacity gal

18.8 18.8



REGAL

Models available:

- Regal Custom Coupe
- Regal Custom Sedan
- Regal Limited Coupe
- Regal Limited Sedan
- Regal Gran Sport Coupe
- Regal Gran Sport Sedan

Standard equipment:

This is a partial list.
See your dealer for details.

Every Regal features:

- 3.1-litre V-6 with MFI (except GS)
- Automatic transmission with overdrive
- 4-wheel power disc brakes
- Power steering
- DynaRide® 4-wheel independent suspension (except Gran Sport)

- Soft-Ray tinted glass
- Tilt steering column
- ETR® AM-FM stereo radio
- Dual front and extended-range rear speakers
- Air conditioning
- Reclining 55/45 seats (except GS)
- Stainless steel exhaust system
- Clearcoat paint with Plastisol protection
- Sun visors with slide-out extensions
- Rear-seat heat ducts

Additional Limited features:

- Specific reclining 55/45 front seats
- Plush carpeting
- Wide bright body-side moldings
- Crystalline tail lamp lenses (Coupe)
- Analog gage package

Additional Gran Sport features:

- 3800 V-6 with tuned-port injection
- Gran Touring suspension
- Cloth reclining bucket seats and operating console with armrest
- Black wide body-side moldings (Coupe)
- Body-color grille (Coupe)
- Front air dam and aero rocker panels (Coupe)
- 16-inch aluminum wheels (4)
- P225/60R16 blackwall touring tires*
- 2-tone paint (Sedan)
- Leather-wrapped steering wheel
- Analog gage package

*Use of tire chains with this tire may cause damage to your car.

Selected available equipment:

- This is a partial list.
See your dealer for details.
- 3800 V-6 with tuned-port injection
 - Electronic cruise control
 - Dual ComforTemp climate control
 - Power windows
 - Electric door locks

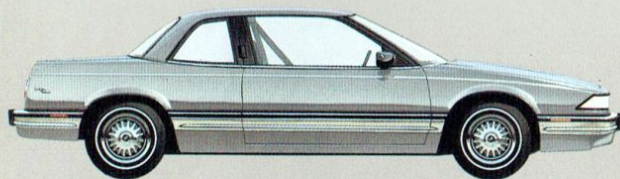
- Electric trunk lock release
- Rear-window defogger
- Aluminum wheels (4)
- Custom locking wire wheelcovers and 15" wheels
- Steering wheel with radio controls
- Anti-lock brake system
- Compact disc player
- Remote keyless entry system
- Four-Seater Package
- Gran Touring Package
- Sedan Sport Package
- Deck lid luggage rack
- Concert Sound speakers

Engines:

- 3.1-litre engine

| | |
|------------|--------------|
| Type | V-6 with MFI |
| Horsepower | 140@4400 |
| Torque | 185@3200 |
- 3800 engine

| | |
|------------|-------------------------------|
| Type | V-6 with tuned-port injection |
| Horsepower | 170@4800 |
| Torque | 220@3200 |



| Dimensions: Inches unless otherwise noted | Coupes | Sedans |
|---|--------|--------|
| Overall | | |
| Length | 193.6 | 194.6 |
| Width | 72.5 | 70.9 |
| Height | 53.0 | 54.3 |
| Wheelbase | 107.5 | 107.5 |
| Front tread | 59.5 | 59.5 |
| Rear tread | 58.0 | 58.0 |
| Interior front | | |
| Legroom | 42.3 | 42.4 |
| Headroom | 37.8 | 38.7 |
| Shoulder room | 57.6 | 57.8 |
| Hip room | 52.0 | 52.7 |
| Interior rear | | |
| Legroom | 34.8 | 36.2 |
| Headroom | 37.1 | 37.8 |
| Shoulder room | 56.8 | 57.8 |
| Hip room | 53.1 | 53.2 |
| Trunk capacity cu ft | 15.6 | 15.8 |
| Fuel tank capacity gal | 16.5 | 16.5 |

LE SABRE

Models available:

- LeSabre Coupe
- LeSabre Custom Sedan
- LeSabre Limited Coupe and Sedan

Standard equipment:

This is a partial list.
See your dealer for details.

Every LeSabre features:

- 3800 V-6 engine with SFI
- Automatic transmission with overdrive
- Power front disc/rear drum brakes
- Power steering
- Tilt steering column
- DynaRide® 4-wheel independent suspension
- Air conditioning
- Soft-Ray tinted glass
- Automatic safety belt system for driver and right front passenger
- ETR® AM-FM stereo radio with seek and scan, clock and extended-range speakers
- Rear-seat lap/shoulder belt system
- Bumper guards—front and rear
- Bumper protective strips

- Deluxe body-color mirrors (left remote, right manual)
- Lower body-side moldings
- Clearcoat paint with Plastisol protection
- Front-seat armrest
- Deluxe wheelcovers
- Trip odometer (except with gage cluster)

Additional Limited features:

- Manual front seatback recliners
- 55/45 front seats with storage armrest
- LeSabre Limited interior trim

Selected available equipment:

- This is a partial list.
See your dealer for details.
- Electronic cruise control
 - Electric door locks
 - Electric rear-window defogger
 - 2-speed windshield wipers with low-speed delay
 - ETR® AM-FM stereo radio with cassette tape player
 - ETR® AM stereo-FM stereo radio with cassette and graphic equalizer. (Receives

C-Quam® AM stereo broadcasts. Most AM stations across the country broadcast in C-Quam but some do not. Check your local stations for compatibility in your area.)

- Power windows
- Electric trunk lock release
- Electronic touch climate control air conditioning
- Anti-lock brake system
- Quartz analog gage cluster
- Gran Touring Package includes 2.97 drive ratio, Gran Touring suspension, blackwall P215/65R15 tires, aluminum wheels, heavy-duty engine and transmission cooling, automatic level control and leather-wrapped steering wheel
- Aluminum wheels (4)
- Wire wheelcovers

- Automatic power antenna
- Heavy-duty engine and transmission cooling
- Deck lid luggage rack
- 6-way power driver seat
- Automatic level control
- Vinyl top
- Carpet savers
- Door edge guards
- Manual seatback recliners
- Lighted visor vanity mirror
- Concert Sound speakers

Engine:

- 3800 engine

| | |
|------------|--------------|
| Type | V-6 with SFI |
| Horsepower | 165@4800 |
| Torque | 210@2000 |



| Dimensions: Inches unless otherwise noted | Coupes | Sedans |
|---|--------|--------|
| Overall | | |
| Length | 196.5 | 196.5 |
| Width | 72.4 | 72.4 |
| Height | 53.8 | 54.6 |
| Wheelbase | 110.8 | 110.8 |
| Front tread | 60.3 | 60.3 |
| Rear tread | 59.8 | 59.8 |
| Interior front | | |
| Legroom | 42.4 | 42.4 |
| Headroom | 38.1 | 38.9 |
| Shoulder room | 59.0 | 59.5 |
| Hip room | 53.0 | 53.0 |
| Interior rear | | |
| Legroom | 37.4 | 38.7 |
| Headroom | 37.6 | 38.3 |
| Shoulder room | 57.8 | 59.5 |
| Hip room | 54.5 | 56.0 |
| Trunk capacity cu ft | 15.7 | 16.4 |
| Fuel tank capacity gal | 18.0 | 18.0 |

SKYLARK

Models available:

- Skylark Coupe and Sedan
- Skylark Custom Coupe and Sedan
- Skylark Gran Sport Coupe
- Skylark Luxury Edition Sedan

Standard equipment:

This is a partial list.

See your dealer for details.

Every Skylark features:

- 2.5-litre Tech IV with EFI
- Automatic transmission
- Power front disc/rear drum brakes
- Power steering
- Soft-Ray tinted glass
- Clearcoat paint with Plastisol protection
- ETR® AM-FM stereo radio
- Split bench front seat
- DynaRide® suspension (except GS)
- 14" wheels and tires

Additional Custom features:

- Split folding rear seatback
- Reclining split bench seat with armrest



- Remote fuel filler door release
- Passenger visor vanity mirror
- Reclining driver/passenger seatback
- Easy-entry front passenger seat (Coupe)

Additional Luxury Edition Sedan features:

- Wide lower body-side moldings
- Wheel opening and wide rocker panel moldings
- Whitewall tires and wire wheelcovers
- Full formal vinyl top
- Lower body accent paint

Additional Gran Sport features:

- Front air dam
- Reclining cloth bucket seats

- Easy-entry front passenger seat
- Operating console
- Black grille and trim
- ETR® AM-FM stereo radio with seek and scan, clock and cassette
- Leather-wrapped steering wheel
- Gran Touring suspension
- Shelby aluminum wheels and Eagle GT + 4 blackwall tires (4)
- Aero rocker panel molding

Selected available equipment:

This is a partial list.

See your dealer for details.

- 2.3-litre DOHC Quad 4
- 3300 V-6 with MFI
- Air conditioning
- Tilt steering column

- Electronic cruise control
- ETR® AM-FM stereo radio with cassette tape player
- Electric door locks
- Power windows
- Trunk lock release
- Gran Touring Package
- Anti-lock brake system (Gran Sport)
- 6-way power driver seat
- Carpet savers
- Electric rear-window defogger
- Aluminum wheels (4)

Engines:

| | |
|--------------------------------|--------------|
| ■ 2.5-litre Tech IV engine | |
| Type | L-4 with EFI |
| Horsepower | 110@5200 |
| Torque | 135@2000 |
| ■ 2.3-litre DOHC Quad 4 engine | |
| Type | DOHC Quad 4 |
| Horsepower | 160@6200 |
| Torque | 155@5200 |
| ■ 3300 engine | |
| Type | V-6 with MFI |
| Horsepower | 160@5200 |
| Torque | 185@2000 |

Dimensions:

Inches unless otherwise noted

| | Coupe | Sedans |
|----------------|-------|--------|
| Overall | | |
| Length | 180.0 | 180.0 |
| Width | 66.6 | 66.6 |
| Height | 52.1 | 52.1 |
| Wheelbase | 103.4 | 103.4 |
| Front tread | 55.6 | 55.6 |
| Rear tread | 55.2 | 55.2 |

Interior front

| | | |
|---------------|------|------|
| Legroom | 42.9 | 42.9 |
| Headroom | 37.7 | 37.7 |
| Shoulder room | 54.6 | 54.3 |
| Hip room | 48.8 | 48.3 |

Interior rear

| | | |
|---------------|------|------|
| Legroom | 34.3 | 34.3 |
| Headroom | 37.1 | 37.1 |
| Shoulder room | 55.2 | 54.1 |
| Hip room | 50.4 | 50.3 |

| | | |
|-----------------------------|------|------|
| Trunk capacity cu ft | 13.4 | 13.4 |
|-----------------------------|------|------|

| | | |
|-------------------------------|------|------|
| Fuel tank capacity gal | 13.6 | 13.6 |
|-------------------------------|------|------|

CENTURY

Models available:

- Century Custom Coupe
- Century Custom Sedan
- Century Custom Wagon
- Century Limited Sedan
- Century Limited Wagon

Standard equipment:

This is a partial list.

See your dealer for details.

Every Century features:

- 2.5-litre Tech IV with EFI
- Automatic transmission
- Power front disc/rear drum brakes
- Power steering
- Air conditioning
- Soft-Ray tinted glass
- ETR® AM-FM stereo radio with seek and scan and clock
- Deluxe, black, outside mirrors (left remote, right manual)
- Notchback bench front seat with armrest
- Steel-belted, radial-ply, all-season whitewall tires

- Clearcoat paint with Plastisol protection
- DynaRide® suspension (Coupe/Sedan)

Additional Limited features:

- Front-door courtesy and warning lights
- Black, lower body-side moldings
- 55/45 notchback seats with storage armrest
- Instrument gages
- Dual-color accent stripes

Additional Wagon features:

- Carpeted load floor area
- Split folding rear seatback
- Lockable load-area storage compartments

Selected available equipment:

This is a partial list.

See your dealer for details.

- 3300 V-6 with MFI
- Automatic transmission with overdrive
- Tilt steering column
- 2-speed windshield wipers with low-speed delay

- Roof rack (Wagon)
- ETR® AM-FM stereo radio with cassette tape player
- Steering wheel with radio controls
- Compact disc player
- Remote keyless entry system
- Electric door locks
- Power windows
- Electric rear-window defogger
- Electric trunk lock release
- Electronic cruise control
- Vinyl third seat (Wagon)
- Air deflector (Wagon)
- Woodgrain vinyl applique (Wagon)
- Tailgate window washer and wiper (Wagon)

Engines:

| | |
|----------------------------|--------------|
| ■ 2.5-litre Tech IV engine | |
| Type | L-4 with EFI |
| Horsepower | 110@5200 |
| Torque | 135@3200 |
| ■ 3300 engine | |
| Type | V-6 with MFI |
| Horsepower | 160@5200 |
| Torque | 185@2000 |



Dimensions:

Inches unless otherwise noted

| | Sedans | Wagons |
|----------------|--------|--------|
| Overall | | |
| Length | 189.1 | 190.9 |
| Width | 69.4 | 69.4 |
| Height | 54.2 | 54.2 |
| Wheelbase | 104.8 | 104.8 |
| Front tread | 58.7 | 58.7 |
| Rear tread | 56.7 | 56.7 |

Interior front

| | | |
|---------------|------|------|
| Legroom | 42.1 | 42.1 |
| Headroom | 38.6 | 38.6 |
| Shoulder room | 56.2 | 56.2 |
| Hip room | 52.4 | 52.4 |

Interior rear

| | | |
|---------------|------|------|
| Legroom | 35.9 | 34.8 |
| Headroom | 38.0 | 38.9 |
| Shoulder room | 56.2 | 56.2 |
| Hip room | 52.7 | 52.7 |

| | | |
|-----------------------------|------|---|
| Trunk capacity cu ft | 16.2 | — |
|-----------------------------|------|---|

| | | |
|-------------------------------|------|------|
| Fuel tank capacity gal | 15.7 | 15.7 |
|-------------------------------|------|------|

| | | |
|-----------------------------|--|------|
| Cargo capacity cu ft | | 74.4 |
|-----------------------------|--|------|

| | | |
|------------------------------|--------|------|
| Rear tailgate opening | width | 42.6 |
| | height | 28.7 |

| | | |
|--------------------------------------|--|------|
| Maximum cargo length at floor | | 75.4 |
|--------------------------------------|--|------|

ROADMASTER ESTATE WAGON

Model available:

- Estate Wagon

Standard equipment:

This is a partial list.

See your dealer for details.

- 5.0-litre V-8 with TBI
- Automatic transmission with overdrive
- Power front disc/rear drum brakes
- Anti-lock brake system
- Power steering
- Steering wheel with Supplemental Inflatable Restraint system (SIR)
- Air conditioning
- 2-speed windshield wipers with low-speed delay
- Power windows with driver's "express down" feature
- Dual-function convenience net
- Carpeted load area
- Vinyl third seat
- Soft-Ray tinted glass
- Clearcoat paint
- Front-seat reading lights
- Tungsten-halogen headlamps
- Load compartment light

- Deluxe, outside, rearview mirrors (left remote, right manual)
- ETR® AM-FM stereo with seek and scan and clock
- 55/45 notchback front seats with armrest
- Manual front seatback recliners
- Rear-seat lap/shoulder belt system
- Lockable storage compartments
- Rear-door child security latches
- 2-way tailgate with rear wiper system
- Tilt steering column
- Aluminum wheels (4)
- Whitewall tires
- Adjustable roof rack
- Vista roof with tinted glass
- Woodgrain vinyl applique
- Tachometer
- Low-fuel-indicator

Selected available equipment:

This is a partial list.

See your dealer for details.

- 6-way power driver's seat
- Electric door locks
- Electronic cruise control
- ETR® AM-FM stereo radio with cassette tape player
- ETR® AM stereo-FM stereo radio with cassette and graphic equalizer. (Receives C-Quam® AM stereo broadcasts. Most AM stations across the country broadcast in C-Quam but some do not. Check your local stations for compatibility in your area.)
- Lighted visor vanity mirrors
- Electric rear-window defogger
- Electronic touch climate control air conditioning

- Cornering lamps
- Twilight Sentinel headlamp control
- Trailer Towing Package
- Leather and vinyl interior trim
- Remote keyless entry
- Cargo security cover

Engine:

| | |
|--------------------|------------------------------------|
| ■ 5.0-litre engine | V-8 with electronic fuel injection |
| Type | |
| Horsepower | 170@4200 |
| Torque | 255@2400 |



Dimensions:

Inches unless otherwise noted

Overall

| | Wagon |
|-------------|-------|
| Length | 217.7 |
| Width | 78.9 |
| Height | 60.1 |
| Wheelbase | 115.9 |
| Front tread | 62.1 |
| Rear tread | 64.1 |

Interior front

| | |
|---------------|------|
| Legroom | 42.2 |
| Headroom | 39.7 |
| Shoulder room | 63.4 |
| Hip room | 56.9 |

Interior rear

| | |
|---------------|------|
| Legroom | 38.0 |
| Headroom | 39.6 |
| Shoulder room | 63.5 |
| Hip room | 57.1 |

| | |
|----------------------|------|
| Cargo capacity cu ft | 92.4 |
|----------------------|------|

| | |
|------------------------|------|
| Fuel tank capacity gal | 22.0 |
|------------------------|------|

| | |
|-----------------------|-------------|
| Rear tailgate opening | width 48.7 |
| | height 27.1 |

| | |
|-------------------------------|------|
| Maximum cargo length at floor | 84.5 |
|-------------------------------|------|

ROADMASTER SEDAN

Models available:

- Roadmaster Sedan
- Roadmaster Limited Sedan

Standard equipment:

This is a partial list.

See your dealer for details.

Every Roadmaster features:

- 5.7-litre V-8 with TBI
- Automatic transmission with overdrive
- Power front disc/rear drum brakes
- Anti-lock brake system
- Power steering
- Tilt steering column
- DynaRide® suspension
- Air conditioning
- Soft-Ray tinted glass
- ETR® AM-FM stereo with seek and scan and clock
- Deluxe steering wheel with Supplemental Inflatable Restraint system (SIR)
- Rear-seat lap/shoulder belt system
- Deluxe body-color mirrors (left remote, right manual)
- Clearcoat paint with Plastisol protection

- Front- and rear-seat armrests
- Composite tungsten-halogen headlamps
- Whitewall tires
- Gage cluster with oil, coolant temperature, volts, trip odometer and tachometer
- Low windshield washer fluid, oil, coolant and fuel level indicators
- Power windows with driver's "express down"
- Rear-door child security latches
- Trunk convenience net
- 55/45 cloth front seats
- Electronic cruise control
- Snap-down front carpet savers

Additional Limited features:

- Electronic touch climate control air conditioning
- ETR® AM-FM stereo with seek and scan, clock and cassette
- Automatic power antenna
- Automatic electric door locks
- 6-way manual front-seat headrests
- Electroluminescent coach lamps
- Door courtesy and warning lights

- Front-seat reading lights
- Electric outside rearview mirrors (heated left)
- Lighted visor vanity mirrors—driver and passenger
- Electric driver and passenger seatback recliners
- Remote keyless entry
- 6-way power seats—driver and passenger
- Variable-effort steering
- Front-seat storage armrest

Selected available equipment:

This is a partial list.

See your dealer for details.

- Compact disc player, graphic equalizer
- Premium speakers

- Trailer Towing Package (5,000 pounds capacity)
- Self-sealing tires (Limited)
- Landau vinyl top
- Leather with vinyl interior trim
- Compass
- Leather and vinyl interior trim
- Automatic trunk pull-down (Limited)
- Twilight Sentinel headlamp control (Limited)
- Cornering lamps (Limited)

Engine:

| | |
|--------------------|------------------------------------|
| ■ 5.7-litre engine | V-8 with electronic fuel injection |
| Type | |
| Horsepower | 180@4200 |
| Torque | 290@2400 |

Dimensions:

Inches unless otherwise noted

Overall

| | Sedans |
|-------------|--------|
| Length | 215.8 |
| Width | 78.1 |
| Height | 54.2 |
| Wheelbase | 115.9 |
| Front tread | 61.8 |
| Rear tread | 60.7 |

Interior front

| | |
|---------------|------|
| Legroom | 42.2 |
| Headroom | 39.2 |
| Shoulder room | 63.4 |
| Hip room | 56.3 |

Interior rear

| | |
|---------------|------|
| Legroom | 39.5 |
| Headroom | 38.8 |
| Shoulder room | 63.4 |
| Hip room | 63.4 |

| | |
|----------------------|------|
| Trunk capacity cu ft | 21.0 |
|----------------------|------|

| | |
|------------------------|------|
| Fuel tank capacity gal | 23.0 |
|------------------------|------|



FOR YOUR FINAL CONSIDERATION:

Occupant protection

- Automatic safety belt system for driver and right front passenger (Skylark, Century, Regal, LeSabre), or Supplemental Inflatable Restraint, driver only, with manual lap/shoulder safety belts for the driver and right front passenger (Park Avenue, Riviera, Reatta, Roadmaster), both including visual and audible warning system.
- Manual lap/shoulder safety belts, outboard rear seat positions
- Manual lap safety belts, center front/rear seat positions, where applicable
- Energy-absorbing steering column

- Energy-absorbing instrument panel
- Energy-absorbing seatback tops, front
- Interlocking door latches
- Side-guard door beam
- Passenger-guard inside door lock handles
- Inertia-locking, folding front seatbacks, 2-door models
- Safety armrests
- Head restraints, driver and right front passenger (adjustable or integral)
- Break-away inside rearview mirrors
- Security door lock and door retention components
- Pressure-lock radiator cap

- Tempered safety glass, side windows; also rear windows
- Dual sun visors

Accident avoidance

- Side marker lamps and reflectors
- Parking lamps that illuminate with headlamps
- Four-way hazard warning flashers
- Backup lamps
- Center high-mounted stop lamp
- Directional signal control with lane-change feature
- Windshield defroster, washer and multi-speed wipers
- Inside rearview mirror
- Outside left rearview mirror (right mirror where applicable)
- Starter safety switch

- Brake system with dual master cylinder and warning light
- Dual-action hood latch (front-opening-hood vehicles)
- Low-glare finish on inside windshield moldings, wiper arms and blades, metallic steering wheel surfaces
- Illuminated heater and defroster controls
- Illuminated windshield wiper and washer controls (if on instrument panel)
- Tires with built-in tread wear indicators
- Safety road wheel rims
- Pressure-relief fuel cap
- Audible brake lining wear indicators, disc brakes

Important: A word about this catalog.

We have tried to make this catalog as comprehensive and factual as possible. We reserve the right, however, to make changes at any time, without notice, in prices, colors, materials, equipment, specifications, models and availability. Since some information may have been updated since the time of printing, please check with your Buick dealer for complete details.

A word about engines.

Buicks are equipped with engines produced by different operating units of GM, its subsidiaries or suppliers to GM worldwide.

A word about assembly of Buicks.

Buicks are assembled by different operating units of General Motors, its subsidiaries or suppliers to GM worldwide. Buicks incorporate thousands of components produced by different operating units of GM, its subsidiaries or suppliers to GM worldwide. We sometimes find it necessary to produce Buicks with different or differently sourced components than originally scheduled. All such

components have been approved for use in Buicks and will provide the quality performance associated with the Buick name. Since some options may be unavailable when your vehicle is assembled, we suggest that you verify that your vehicle includes the equipment you ordered, or if there are changes, that they are acceptable to you.

A word about updated service information.

Buick regularly sends its dealers useful service bulletins about Buick products. Buick monitors product performance in the field. We then prepare bulletins for servicing our products better. Now you can get these bulletins, too. Ask your dealer. To get ordering information, call toll-free 1-800-551-4123.

A word about corrosion protection.

Buicks are designed and built to resist corrosion. All body sheet metal components are warranted against rust-through corrosion for 6 years/100,000 miles. Application of additional rust-inhibiting materials is not required under the corrosion coverage.

The GM Protection Plan.

It offers service protection in addition to that provided by GM's new-vehicle limited warranty. Coverage is currently available only in the U.S.A. and Canada for the 1991 model year. See your Buick dealer for details.

A word about warranty.

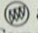
The GM 3-year/50,000-mile BUMPER TO BUMPER PLUS WARRANTY covers repairs for any new Buick, including labor and parts, to correct any defects in material or workmanship occurring during the warranty period. The complete vehicle (except tires, which are covered by their manufacturer) will be covered for 3 years or 50,000 miles, whichever comes first. After the first year or 12,000 miles, there is a \$100 deductible per repair visit. Body sheet metal rust-through from corrosion is covered for 6 years or 100,000 miles, whichever comes first. There is no deductible for rust-through repairs. See your Buick dealer for terms of this limited warranty. Supplemental Inflatable Restraint coverage is 3 years regardless of mileage with no deductible.

Buy or lease a Buick.

Many Buick dealers offer you the opportunity to buy or lease a Buick. Ask about SMARTLEASESM. It may be right for you.

Buick Roadside Assistance.

It provides owners of 1991 Buicks with access to minor repairs or towing for disabled vehicles. It is reached through a toll-free telephone number and operates 24 hours a day, 365 days a year. Just call 1-800-252-1112. See your Buick dealer for details.

©1990 General Motors Corporation. All Rights Reserved. Buick, Riviera, Reatta, Park Avenue, LeSabre, Regal, Century, Skylark and  are registered trademarks of General Motors Corporation. Roadmaster and Roadmaster Estate Wagon are trademarks of General Motors Corporation.



Let's get it together... buckle up.



BUICK®

The New Symbol For Quality
In America.