

A World-Class  
Luxury Road Car.  
From America.



1994 CHRYSLER  NEW YORKER



1994 CHRYSLER  NEW YORKER



hrysler New Yorker. The name is synonymous with the luxury that Americans expect from American automobiles.

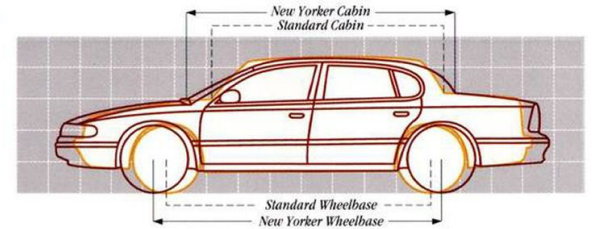
A new kind of Chrysler New Yorker is coming. It will offer a new kind of luxury. It will be a New Yorker that surpasses ingrained ideas of mere ease and comfort. A New Yorker that redefines luxury with its '90s approach to design concepts and engineering realities. A New Yorker that makes no apologies for borrowing a few ideas from its Japanese, European and American competitors. Because it borrows only the best ideas. And improves upon them.

The 1994 New Yorker's new brand of luxury will be a technology-driven luxury that boasts engines as responsive, and suspensions as solid, as any comparable car on the international scene. New Yorker's cab-forward design will integrate the roominess of traditional domestic luxury cars with the technological sophistication admired in the imports — to produce an *American* world-class luxury road car.

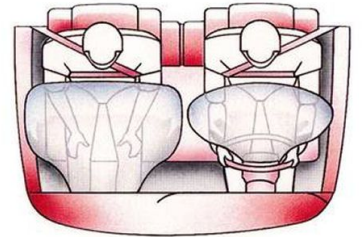
For more information on Chrysler products, call 1-800-4-A-CHRYSLER

### Cab-Forward Design

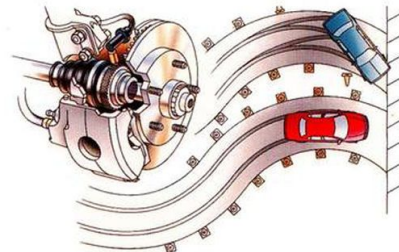
changes the architecture of the automobile. Wheels are pushed toward the



“corners” of the car to create a longer wheelbase and wider stance for greater stability and expanded interior space. The windshield is angled sharply forward to improve aerodynamics and visibility. Chrysler's leadership in safety is evidenced not only by air bags for driver *and* front passenger, but also by additional safety-



engineered features — the New Yorker will boast an advanced four-wheel disc, antilock braking system and available computerized traction control for steady acceleration on slippery surfaces. A four-wheel independent suspension allows for excellent handling and driving comfort. The all-new Chrysler



New Yorker doesn't just meet today's world-class automotive standards ... it sets them.



Advantage:  
Chrysler.