

F O R D 1 9 9 4

# F-SERIES





## 1994 F-SERIES

In the battle for full-size pickup truck leadership, one name comes out ahead, year after year as the clear winner.

Ford F-Series.

In the world of trucks, the name F-Series is synonymous with rugged and dependable performance.

F-Series is, and always has been, *Built Ford Tough!*

**Ford Trucks.  
The Best Never Rest.™**

On its solid reputation for toughness — for style, comfort and quality as well — F-Series has built its record as the best-selling full-size pickup for 16 straight years.\*

Perhaps even more impressive, in surveys of truck owners, F-Series has been rated highest in quality<sup>†</sup> and durability.<sup>††</sup>



*F-Series XLT Styleside Regular Cab in Raven Black.  
Some equipment shown is optional.*

*F-Series XLT Styleside  
SuperCab in Tucson Bronze  
Clearcoat Metallic.*



*F-Series XLT Flareside Regular Cab  
in Brilliant Blue Clearcoat Metallic.*

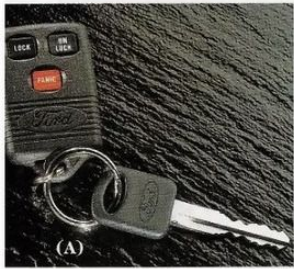
\*Based on model year manufacturers' reported retail deliveries by division through June, 1993.

†Best-built claim based on an average of consumer-reported problems at three months' ownership in a survey of 92 models designed and built in North America.

††Based on an overall average of consumer-reported problems in a 1992 survey of owners of full-size pickups at 1 - 4, 6, 8 and 10 years of ownership.



## THE F-SERIES INTERIOR



Over the years, continuous improvements have made the F-Series a better pickup truck.

Particularly in the vital area of safety, here at Ford Motor Company of Canada, The Best Never Rest. Now in the F-Series (in models under 3856 kg. (8,500-lb.) GVWR) you have the added peace of mind of a standard driver-side air bag.

Important as the air bag is, be sure to remember that it is intended only to supplement your lap and shoulder belts.

New also in F-Series '94 is the premium 40/20/40 bench seat, optional in the XLT. The driver and passenger seats (each 40%) are independently adjustable, and the centre seat back (20%) can be lowered to become a full centre armrest.

And that's not all. Enjoy the new premium electronic sound system (optional in the XLT) available with either a cassette tape or compact disc player.

Newly available also for XLT are an illuminated visor vanity mirror, optional Security Group and optional electrochromic rearview mirror that automatically dims at night to reduce annoying headlamp glare.



- (A) The new, optional on XLT, security group includes a remote keyless entry system and an anti-theft alarm system.
- (B) Cloth captain's chairs for SuperCab have power lumbar supports, a centre console, and include a cloth rear bench seat.
- (C) F-Series features ergonomic instrumentation. And a newly available driver air bag to supplement the safety belts is standard (models under 3856 kgs. (8,500-lbs.) GVWR).
- (D) A premium electronic sound system with CD player is now available in XLT.
- (E) The 40/20/40 bench seat option is new in the F-Series XLT. When lowered, the centre seat back becomes a full armrest with cupholders and storage compartment.



## CAB STYLES

The Ford F-Series comes in three cab styles: the popular Regular Cab and the roomier SuperCab, both available in Styleside or Flareside model; and the spacious Crew Cab.

New for 1994 is the driver air bag to supplement your safety belts, standard in Regular Cabs and SuperCabs with a Gross Vehicle Weight Rating (GVWR) under 3856 kgs. (8,500 lbs.).

### REGULAR CAB

This is the most popular cab style in the best-selling F-Series lineup. Choose the Regular Cab XL with a wide and comfortable 3-passenger vinyl bench seat, or the deluxe XLT with cloth flight bench seat and power lumbar support.

### SUPERCAB

The F-Series SuperCab provides additional seating. Plus enough additional storage space behind the front seat. (849 litres (30 cu. ft.)) so that

you may not feel the need to buy a cap for your pickup bed.

The XL trim level includes a knitted vinyl front bench seat and rear vinyl bench seat. Jump seats for two passengers are optional, while the XLT features a cloth bench seat up front as well as a rear cloth bench seat equipped with lap/shoulder safety belts for the outboard occupants.

SuperCab also offers the option of luxurious cloth reclining front captain's chairs with power lumbar supports and centre console.

### CREW CAB

Crew Cab combines full-size pickup strength and versatility with 4-door convenience and 6-passenger accommodations.

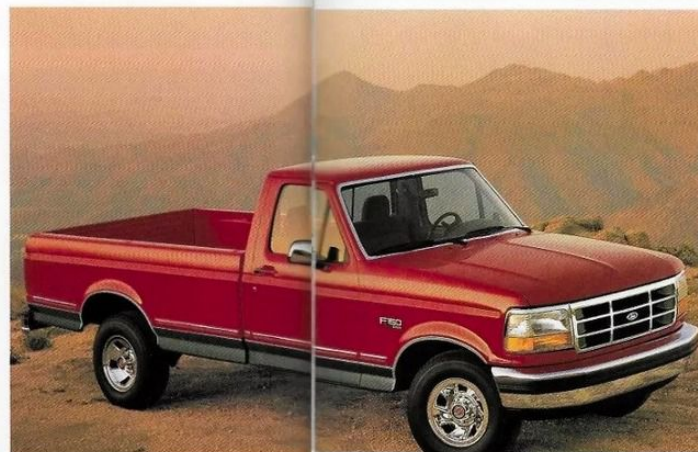
5.8-litre multi-port fuel-injected V-8 power, a 2.4 m (8-ft.) pickup box and fully trimmed interior are among the Crew Cab's many standard features.



At left: F-Series Styleside SuperCab in Royal Blue Clearcoat Metallic.

Some equipment shown on these pages is optional.

Below, from left to right: Flareside SuperCab in Tobago Green Clearcoat Metallic; Styleside Regular Cab in two-tone Electric Red Clearcoat Metallic over Light Opal Clearcoat Metallic; and the Crew Cab in Oxford White.





## F-SERIES 4x4



The added traction of 4-wheel drive is available on Regular Cab F-150, F-250HD and F-350; SuperCab F-150 and F-250HD; and the F-350 Crew Cab.

F-Series offers three 4x4 systems: automatic; manual; or Ford's Touch Drive electric shift option (for F-150 only).

Locking the front hubs with the standard automatic system is easy. Just come to a stop and shift into 4-wheel drive. The rest is automatic.

With the available manual system, preferred by many off-roaders, an easy quarter turn of each front hub

selector knob is all that's needed to lock the hubs.

The ease of push buttons on the instrument panel and instantaneous hub engagement make Touch Drive the ultimate in 4-wheeling convenience. In the full-size class, only the F-Series offers it.

All three systems allow you, once the hubs are engaged, to shift "on the fly" from 2WD to 4WD-High and back again at normal road speeds.

*F-Series SuperCab 4x4 in Brilliant Blue Clearcoat Metallic. Some equipment shown is optional.*



## PERFORMANCE AND SAFETY

Ford F-Series is engineered to satisfy the many demands of driving today. Ruggedness and comfort. Performance and economy. And safety.

The backbone of F-Series strength is a ladder-type frame with a special wax coating for corrosion protection. On it are built a strong cab and pickup box that make extensive use of 2-sided galvanized steel.

The independent suspensions — Twin-I-Beam (4x2); Twin-Traction Beam (4x4) — and the monobeam front axle (F-350 4x4) are designed for rugged performance and are equipped with components such as standard nitrogen gas-pressurized shock absorbers for ride comfort.

Whatever your power needs, even if an application like extra heavy-duty trailer towing is among them, there's an F-Series powerplant engineered to match them.

F-Series offers four gas engines, all equipped with multi-port electronic fuel injection. There are two high-torque V-8 diesels to choose from as well: the naturally aspirated 7.3-litre diesel; and the new, more powerful 7.3-litre turbocharged diesel.

F-Series pickups are well-equipped for your safety, too, with features such as a driver air bag designed to supplement your safety belts (standard in models under 3856 kgs. (8,500-lbs.) Gross Vehicle Weight Rating) and rear anti-lock brakes.

Aero-designed headlights feature impact-resistant lenses, plus halogen bulbs that can be easily replaced from under the hood without tools.

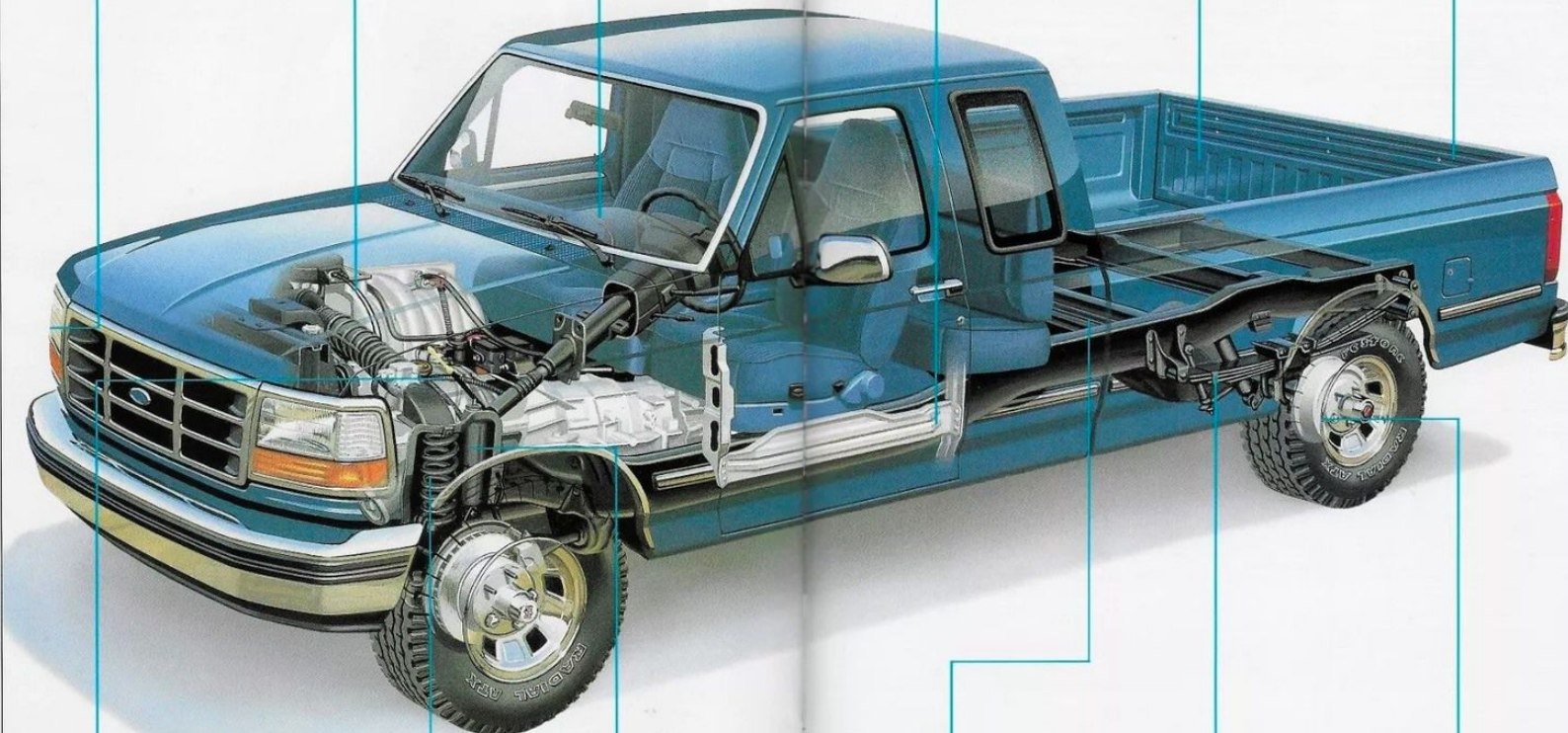
Gas engines feature EEC-IV computer-controlled, "multi-port" electronic fuel injection. EEC-IV constantly controls the fuel-air mixture and spark timing to optimize performance and driveability.

The optional electronic 4-speed automatic overdrive transmission is designed for smooth shift feel and performance. The driver-activated transmission control switch prevents upshifting to 4th gear.

Among the many safety features in all F-Series pickups are side door intrusion beams.

Hood, fenders, dash panel, doors, front floor pan, pickup box and tailgate are two-sided galvanized steel. Roof sheet metal is also galvanized (one-sided).

F-Series offers a wide range of payloads, from 472 kgs. (1,040 lbs.) (F-150 Regular Cab Flareside) to 2325 kgs. (5,125 lbs.) (F-350 Regular Cab with dual rear wheels).



All three 4x4 systems — the standard automatic; optional manual; and optional Touch Drive (F-150 only) — allow shifting "on the fly" from 2WD to 4WD High and back at normal road speeds.

Twin-I-Beam (4x2) and Twin-Traction Beam (F-150, F-250 HD 4x4) front suspensions feature an axle arm and spring for each wheel. Bumps are handled independently for a smooth and controlled ride.

Nitrogen gas-pressurized front and rear shock absorbers are designed to help maintain consistent hydraulic fluid pressure for a smooth and controlled ride, even over rough road conditions.

The ladder-type frame provides a solid foundation. And it features a special wax coating — one of many measures taken to protect F-Series pickups from corrosion.

Two-stage, multi-leaf rear springs adjust to optimize ride comfort and load carrying capability. Auxiliary springs are standard on F-350 models.

F-Series pickups come equipped with power front disc and rear drum brakes. The computer-controlled rear anti-lock system helps you make more controlled stops under most operating conditions.



1994 F-Series pickups under 3856 kgs. (8,500-lbs.) GVWR are equipped with a driver-side air bag to supplement the safety belts.



The rear anti-lock brake system is one of many "operating safety" features designed to help you avoid an accident. And new in the F-Series list of safety features for 1994 is the rear high-mount stop lamp.



The electrochromic rearview mirror, a new option for the F-Series XLT, automatically dims at night to reduce headlamp glare.



## F-SERIES 4x2 SPECIFICATIONS

GWR	F-150	2835 (6,250); Regular Cab; 2835 (6,250); SuperCab
max. kgs. (lbs.)	F-250	2994 (6,600); Regular Cab
	F-250 HD	3901 (8,600); Regular Cab; 3992 (8,800); SuperCab
	F-350	4536 (10,000); Regular Cab DRW; 4536 (10,000); SuperCab DRW
		4173 (9,200); Crew Cab SRW; 4536 (10,000); Crew Cab DRW
Front axle	F-150	1542 (3,400); Regular Cab; 1542 (3,400); SuperCab
max. kgs. (lbs.)	F-250	1769 (3,900); Regular Cab
	F-250 HD	1905 (4,200); Regular Cab; 1905 (4,200); SuperCab
	F-350	1905 (4,200); Regular Cab DRW; 1905 (4,200); SuperCab DRW
		1905 (4,200); Crew Cab SRW; 1905 (4,200); Crew Cab DRW
Rear axle	F-150	1724 (3,800); Regular Cab; 1724 (3,800); SuperCab
max. kgs. (lbs.)	F-250	2404 (5,300); Regular Cab
	F-250 HD	2835 (6,250); Regular Cab; 2835 (6,250); SuperCab
	F-350	3357 (7,400); Regular Cab DRW; 3357 (7,400); SuperCab DRW
		2835 (6,250); Crew Cab SRW; 3357 (7,400); Crew Cab DRW
Springs, front		Coil
rear		2-stage leaf, variable rate (plus auxiliary springs on F-350)
		Opt. auxiliary rear springs for many models.
		See your Ford or Mercury Dealer.
Shock absorbers		Heavy-duty gas-pressurized
Battery		Std. 72 amp-hr. Opt. 84 amp-hr.; Dual 84 amp-hr. std. with 7.3L Diesel
Alternator		75 amps with 4.9L engine and 7.3L engine
		95 amps with 5.0L and 5.8L engines; 130 amps with 7.3L diesel
Fuel capacity		Std. 131 (28.9) SWB F-150;
litres (imp. gal.)		141 (31.0); LWB F-150/F-250/F-350
		Opt. 69 (15.2); F-150/250/250 HD Regular Cab
Steering		Power
Brakes		Power front disc; power rear drum with anti-lock system

HD = Heavy-Duty. SRW = Single Rear Wheels. DRW = Dual Rear Wheels.

## 4x2 POWERTEAMS

	Regular Cab				SuperCab				Crew Cab			
Engines	F-150	F-250	F-250 HD	F-350 DRW	F-150	F-250	F-250 HD	F-350 DRW	F-150	F-250	F-250 HD	F-350 DRW
4.9L EFI I-6	S	S	S	-	S	O	-	-	-	-	-	-
5.0L EFI V-8	O	O	-	-	O	-	-	-	-	-	-	-
5.8L EFI V-8	O	O	O	S	O	S	-	S	S	-	-	-
7.5L EFI V-8	-	-	O	O	-	O	S	O	O	-	-	-
7.3L V-8 Diesel	-	-	O	O	-	O	O	O	O	-	-	-
7.3L Turbo Diesel	-	-	O	O	-	O	O	O	O	-	-	-
Transmissions												
5-spd. manual OD	S	S	-	-	S	-	-	-	-	-	-	-
5-spd. heavy-duty manual OD	-	-	S	S	-	S	S	S	S	-	-	-
3-spd. auto.	-	-	O	O	-	O	-	O	O	-	-	-
Electronic 4-spd. auto. OD	O	-	-	-	O	-	-	-	-	-	-	-
Electronic 4-spd. auto. OD	O	O	O	O	O	O	O	O	O	-	-	-

OD = Overdrive. SRW = Single Rear Wheels. DRW = Dual Rear Wheels.

## ENGINE SPECIFICATIONS

	Bore x Stroke	Compression Ratio	Horsepower (SAE net)	Torque, lbs./ft. (SAE net)
4.9-Litre Multi-Port EFI I-6	4.00 x 3.96	8.8	145 @ 3,400 rpm	265 @ 2,000 rpm
4.9-Litre Multi-Port EFI I-6*	4.00 x 3.98	8.8	150 @ 3,400 rpm	260 @ 2,000 rpm*
5.0-Litre Multi-Port EFI V-8	4.00 x 3.00	9.0	205 @ 4,000 rpm	275 @ 3,000 rpm <sup>(1)</sup>
5.8-Litre Multi-Port EFI V-8	4.00 x 3.85	8.8	210 @ 5,600 rpm	325 @ 2,800 rpm
7.5-Litre Multi-Port EFI V-8*	4.36 x 3.50	8.5	245 @ 4,000 rpm	395 @ 2,400 rpm <sup>(1)</sup>
7.3-Litre V-8 Diesel*	4.11 x 4.18	21.5	185 @ 3,000 rpm	360 @ 1,400 rpm
7.3-Litre V-8 Turbo Diesel*	4.11 x 4.18	21.5	190 @ 3,000 rpm	395 @ 1,400 rpm

\*Models over 3856 kgs. (8,500 lbs.) Gross Vehicle Rating only. (1) With manual transmission.

## F-SERIES 4x4 SPECIFICATIONS

GWR	F-150	2835 (6,250); Regular Cab; 2835 (6,250); SuperCab
max. kgs. (lbs.)	F-250 HD	3901 (8,600); Regular Cab; 3992 (8,800); SuperCab
	F-350	4082 (9,000); Regular Cab SRW
		4173 (9,200); Crew Cab SRW
Front axle	F-150	1724 (3,800); Regular Cab; 1724 (3,800); SuperCab
max. kgs. (lbs.)	F-250 HD	2087 (4,600); Regular Cab; 2087 (4,600); SuperCab
	F-350	2268 (5,000); Regular Cab SRW
		2268 (5,000); Crew Cab SRW
Rear axle	F-150	1724 (3,800); Regular Cab; 1724 (3,800); SuperCab
max. kgs. (lbs.)	F-250 HD	2835 (6,250); Regular Cab; 2835 (6,250); SuperCab
	F-350	2835 (6,250); Regular Cab SRW
		2835 (6,250); Crew Cab SRW
Springs, front		Coil: F-150; Constant-rate tapered leaf: F-250 HD/350
rear		2-stage leaf, variable rate (plus auxiliary springs on F-350)
		Opt. auxiliary rear springs for many models.
		See your Ford or Mercury Dealer.
Shock absorbers		Gas-pressurized (HD std. on F-250 HD and F-350; opt. on F-150)
Front hubs		Std. auto locking: F-150/250 HD/350
		Opt. manual locking: F-150/250 HD/350
		Opt. auto locking with Touch Driver: F-150
Battery		Std. 72 amp-hr. Opt. 84 amp-hr.; Dual 84 amp-hr. std. with 7.3L Diesel
Alternator		75 amps with 4.9L engine and 7.5L engine
		95 amps with 5.0L and 5.8L engines; 130 amps with 7.3L diesel
Fuel capacity		Std. 69 (15.2); SWB F-150 Regular Cab
litres (imp. gal.)		Std. 131 (28.9); SWB F-150 SuperCab; 141 (31.0); LWB F-150/250 HD/350
		Opt. 69 (15.2); LWB F-150/250 HD/350 Regular Cab
Steering		Power
Brakes		Power front disc; power rear drum with anti-lock system

HD = Heavy-Duty. SRW = Single Rear Wheels. DRW = Dual Rear Wheels.

## 4x4 POWERTEAMS

	Regular Cab				SuperCab				Crew Cab			
Engines	F-150	F-250 HD	F-350 SRW	F-150	F-250 HD	F-350 SRW	F-150	F-250 HD	F-350 SRW	F-150	F-250 HD	F-350 SRW
4.9L EFI I-6	S	-	-	S	-	-	-	-	-	-	-	-
5.0L EFI V-8	O	-	-	O	-	-	-	-	-	-	-	-
5.8L EFI V-8	O	S	S	O	S	S	-	-	-	-	-	-
7.5L EFI V-8	-	O	O	-	O	O	-	-	-	-	-	-
7.3L V-8 Diesel	-	O	O	-	O	O	-	-	-	-	-	-
7.3L Turbo Diesel	-	O	O	-	O	O	-	-	-	-	-	-
Transmissions												
5-spd. manual OD	S	-	-	S	-	-	-	-	-	-	-	-
5-spd. heavy-duty manual OD	-	S	S	-	S	S	-	-	-	-	-	-
3-spd. auto.	-	O	O	-	O	O	-	-	-	-	-	-
Electronic 4-spd. auto. OD	O	-	-	-	O	-	-	-	-	-	-	-
Electronic 4-spd. auto. OD	O	O	O	O	O	O	-	-	-	-	-	-

OD = Overdrive. SRW = Single Rear Wheels. DRW = Dual Rear Wheels.

## F-SERIES MAXIMUM TRAILER WEIGHTS

Automatic	Axle Ratio	GCWR Max. kgs. (lbs.)	Regular Cab						SuperCab				Crew Cab				
			F-150 4x2 kgs. (lbs.)	F-150 4x4 kgs. (lbs.)	F-250 4x2 kgs. (lbs.)	F-250 HD4x2 kgs. (lbs.)	F-250 HD4x4 kgs. (lbs.)	F-350 4x4 kgs. (lbs.)	F-350 DRW 4x2 kgs. (lbs.)	F-150 4x2 kgs. (lbs.)	F-150 4x4 kgs. (lbs.)	F-250 HD4x2 kgs. (lbs.)	F-250 HD4x4 kgs. (lbs.)	F-350 DRW 4x2 kgs. (lbs.)	F-350 SRW 4x2 kgs. (lbs.)	F-350 DRW 4x2 kgs. (lbs.)	F350 4x4 kgs. (lbs.)
4.9L EFI I-6	3.08	4082(9,000)	2132(4,700)	(1)	-	-	-	-	-	1999(4,400)	-	-	-	-	-	-	-
	3.55	4536(10,000)	2596(5,700)	2495(5,500)	2495(5,500)	-	-	-	-	2449(5,400)	-	-	-	-	-	-	-
	4.10	4990(11,000)	-	-	2903(6,400)	-	-	-	-	-	2767(6,100)	-	-	-	-	-	-
5.0L EFI V-8	3.08	4082(9,000)	2132(4,700)	-	-	-	-	-	-	-	-	-	-	-	-	-	-
	3.55	5216(11,500)	3266(7,200)	3175(7,000)	-	-	-	-	-	3130(6,900)	3039(6,700)	-	-	-	-	-	-
	4.10	5670(12,500)	-	3529(8,000)	3529(8,000)	-	-	-	-	3493(7,700)	-	-	-	-	-	-	-
5.8L EFI V-8	3.08	4536(10,000)	2540(5,600)	2449(5,400)	-	-	-	-	-	2404(5,300)	-	-	-	-	-	-	-
	3.55	5216(11,500)	-	3130(6,900)	3039(6,700)	2903(6,400)	2856(6,300)	2949(6,500)	-	2903(6,400)	2767(6,100)	-	-	2767(6,100)	2675(5,900)	2596(5,700)	-
	3.55	5443(12,000)	3447(7,600)	3357(7,400)	-	-	-	-	-	3311(7,300)	3221(7,100)	-	-	-	-	-	-
7.3L Diesel	4.10	5697(12,500)	3656(8,000)	-	3610(7,900)	3720(8,200)	3637(7,900)	3537(7,800)	3537(7,800)	-	3537(7,800)	3447(7,600)	-	3447(7,600)	3357(7,400)	3267(7,200)	-
	3.55	5443(12,000)	-	-	2994(6,600)	2856(6,300)	2812(6,200)	-	-	2856(6,300)	2722(6,000)	-	-	2722(6,000)	-	2540(5,600)	-
	4.10	7111(17,000)	-	-	4536(10,000)	4536(10,000)	4536(10,000)	4536(10,000)	-	4536(10,000)	4536(10,000)	4536(10,000)	4536(10,000)	4536(10,000)	4536(10,000)	4536(10,000)	-
7.3L Turbo Diesel	3.55	5443(12,000)	-	-	2994(6,600)	2856(6,300)	2812(6,200)	-	-	2856(6,300)	2722(6,000)	-	-	2722(6,000)	-	2540(5,600)	-
7.5L EFI V-8	4.10	7111(17,000)	-	-	4536(10,000)	4536(10,000)	4536(10,000)	4536(10,000)	-	4536(10,000)	4536(10,000)	4536(10,000)	4536(10,000)	4536(10,000)	4536(10,000)	4536(10,000)	-
	3.55	6904(15,000)	-	-	4536(10,000)	4409(9,700)	4356(9,600)	-	-	4409(9,700)	4249(9,400)	-	-	4249(9,400)	-	4082(9,000)	-
	4.10	8392(18,500)	-	-	4536(10,000)	4536(10,000)	4536(10,000)	4536(10,000)	-	4536(10,000)	4536(10,000)	4536(10,000)	4536(10,000)	4536(10,000)	4536(10,000)	4536(10,000)	-
Manual																	
4.9L EFI I-6	2.73	2835(6,250)	(1)	-	-	-	-	-	-	-	-	-	-	-	-	-	-
	3.08	2926(6,450)	9992(2,200)	9072(2,000)	-	-	-	-	-	8621(1,900)	7711(1,700)	-	-	-	-	-	-
	3.55	3538(7,800)	1533(3,400)	1497(3,300)	1497(3,300)	-	-	-	-	1497(3,300)	1361(3,000)	-	-	-	-	-	-
5.0L EFI V-8	4.10	4536(10,000)	-	-	2404(5,300)	-	-	-	-	-	-	-	-	-	-	-	-
	3.08	2926(6,450)	9992(2,200)	-	-	-	-	-	-	-	-	-	-	-	-	-	-
	3.55	3538(7,800)	1633(3,600)	1497(3,300)	1542(3,400)	-	-	-	-	1497(3,300)	1361(3,000)	-	-	-	-	-	-
5.8L EFI V-8	4.10	4536(10,000)	-	2540(5,600)	2495(5,500)	-	-	-	-	-	2404(5,300)	-	-	-	-	-	-
	3.55	5216(11,500)	-	-	3039(6,700)	2903(6,400)	2856(6,300)	-	-	2903(6,400)	2767(6,100)	-	-	-	-	-	-
	4.10	5697(13,000)	-	-	3720(8,200)	3593(7,900)	3537(7,800)	3537(7,900)	-	3537(7,900)	3417(7,600)	-	-	3417(7,600)	3357(7,400)	3267(7,200)	-
7.3L Diesel	3.55	5443(12,000)	-	-	3039(6,700)	2856(6,300)	2856(6,300)	-	-	2903(6,400)	2767(6,100)	-	-	2767(6,100)	-	2596(5,700)	-
	4.10	6350(14,000)	-	-	3946(8,700)	3765(8,300)	3765(8,300)	3810(8,400)	-	3810(8,400)	3674(8,100)	3674(8,100)	3674(8,100)	3593(7,900)	3493(7,700)	3407(7,500)	-
	3.55	5443(12,000)	-	-	3039(6,700)	2856(6,300)	2856(6,300)	-	-	2903(6,400)	2767(6,100)	-	-	2767(6,100)	-	2596(5,700)	-
7.3L Turbo Diesel	4.10	6350(14,000)	-	-	3946(8,700)	3765(8,300)	3765(8,300)	3810(8,400)	-	3810(8,400)	3674(8,100)	3674(8,100)	3674(8,100)	3593(7,900)	3493(7,700)	3407(7,500)	-
7.5L EFI V-8	3.55	5443(12,000)	-	-	3175(7,000)	3039(6,700)	2994(6,600)	-	-	3039(6,700)	2903(6,400)	-	-	2903(6,400)	-	2722(6,000)	-
	4.10	7258(16,000)	-	-	4536(10,000)	4536(10,000)	4536(10,000)	4536(10,000)	-	4536(10,000)	4536(10,000)	4536(10,000)	4536(10,000)	4536(10,000)	4536(10,000)	4536(10,000)	-

(1) Not available for trailer towing. See your dealer for fifth-wheel ratings.

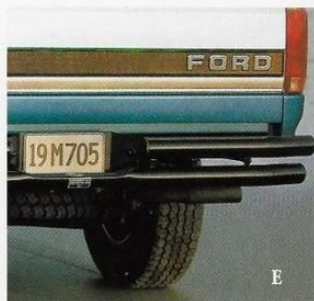
## 4x2 PAYLOAD PACKAGE SELECTOR

Regular Cab Styleside	Package	Payload kgs. (lbs.)*	GVWR kgs. (lbs.)	Tires (Min.)
F-150 (6-3/4' pickup box)	#1	612 (1,350)	2381 (5,250)	P215/75R15SL
F-150 (6-3/4' pickup box)	#2	984 (2,170)	2767 (6,100)	P235/75R15XL
F-150 (8' pickup box)	#1	607 (1,470)	2472 (5,450)	P215/75R15L
F-150 (8' pickup box)	#2	1027 (2,265)	2835 (6,250)	P235/75R15XL
F-250 (8' pickup box)	#1	1064 (2,345)	2994 (6,600)	LT1215/85R16D
F-250 HD (8' pickup box)	#1	1867 (4,115)	3901 (8,600)	LT235/85R16E
F-350 DRW (8' pickup box)	#1	2325 (5,125)	4536 (10,000)	LT1215/85R16D
Regular Cab Flareside				
F-150 (6-3/4' pickup box)	#1	672 (1,040)	2268 (5,000)	P235/75R15XL
F-150 (6-3/4' pickup box)	#2	478 (1,490)	2472 (5,450)	P235/75R15XL
F-150 (6-3/4' pickup box)	#3	957 (2,110)	2767 (6,100)	P235/75R15XL
SuperCab Styleside				
F-150 (6-3/4' pickup box)	#1	839 (1,850)	2744 (6,050)	P235/75R15XL
F-150 (8' pickup box)	#1	873 (1,925)	2835 (6,250)	P235/75R15XL
F-250 HD (8' pickup box)	#1	1830 (4,035)	3992 (8,800)	LT235/85R16E
F-350 DRW (8' pickup box)	#1	2097 (4,600)	4536 (10,000)	LT1215/85R16D
SuperCab Flareside				
F-150 (6-3/4' pickup box)	#1	807 (1,780)	2744 (6,050)	P235/75R16L



## PERSONALIZING YOUR F-SERIES

The enjoyment of owning an F-Series pickup begins well before you drive it away from the dealership. It happens the moment you decide how you want it equipped. The exterior paint and interior trim colours. The seating arrangement. The performance equipment. The entertainment system. The list of items goes on and on, the possibilities seemingly endless.



Choose from the complete list of factory-installed options listed on pages 15-16.

And to personalize your new F-Series pickup even further, be sure to ask your Ford or Mercury Dealer about all the special accessories available through the dealership's parts and service department. Here are just a few of the many available.

- (A) Moulded vinyl floor mats.
- (B) Under-lip bedliner with cutouts.
- (C) Off-road lights.
- (D) Rally bar.
- (E) Tubular rear bumper.

Like the F-Series itself, Ford accessories are exceptionally high in quality, and they're covered by the new-vehicle limited warranty. For complete details see your Ford or Mercury Dealer.

## STANDARD AND OPTIONAL FEATURES, ACCESSORIES, PAINT AND TRIM COLOURS



(A) Illuminated visor vanity mirror (XLT only).

(B) The rear step bumper for the Flareside model.

(C) From left to right: argent styled steel wheel, deep-dish aluminum wheel, and chrome styled steel wheel.

### F-150 STYLESIDE PAINT AND TRIM COLOURS

Exterior Paint Colours	Interior Trim Colours			
	Royal Blue	Ruby Red	Opal Grey	Medium Mocha
Desert Copper Clearcoat Metallic				
Electric Red Clearcoat Metallic				
Sunrise Red Clearcoat Metallic*				
Iris Clearcoat Metallic				
Brilliant Blue Clearcoat Metallic				
Royal Blue Clearcoat Metallic				
Deep Forest Green Clearcoat Metallic				
Tobago Green Clearcoat Metallic				
Black Clearcoat*				
Crimson Clearcoat**				
Light Opal Clearcoat Metallic				
Tucson Bronze Clearcoat Metallic				
Oxford White				
Raven Black†				
Colonial White				

\*SuperCab only. \*\*Clearcoat on SuperCab only. †Regular Cab only.

Note: Ask your Ford or Mercury dealer for available two-tone combinations.

### F-150 FLARESIDE PAINT AND TRIM COLOURS

Exterior Paint Colours	Interior Trim Colours			
	Royal Blue	Ruby Red	Opal Grey	Medium Mocha
Electric Red Clearcoat Metallic				
Iris Clearcoat Metallic				
Brilliant Blue Clearcoat Metallic				
Royal Blue Clearcoat Metallic				
Deep Forest Green Clearcoat Metallic				
Tobago Green Clearcoat Metallic				
Black Clearcoat*				
Crimson Clearcoat**				
Light Opal Clearcoat Metallic				
Tucson Bronze Clearcoat Metallic				
Oxford White				
Raven Black†				

\*SuperCab only. \*\*Clearcoat on SuperCab only. †Regular Cab only.

Note: Ask your Ford or Mercury dealer for available two-tone combinations.



## MAJOR STANDARD F-150 FEATURES

LT 7A	Styleside						Flareside					
	SuperCab						Regular Cab			SuperCab		
	"S" 820A	Special 826A	XL 831A	XL 832A	XLT 836A	XLT 837A	XL 811A	XLT 816A	XLT 817A	XL 811A	XLT 816A	XLT 817A
	O	P	P	P	-	-	P	-	-	P	-	-
	S	S	S	S	O	O	O	O	O	S	O	O
	-	-	-	-	O	O	-	O	O	-	O	O
	-	-	-	-	O	O	-	-	-	-	-	-
	-	-	O	O	O	O	-	-	-	O	O	O
	S	S	S	S	O	O	-	-	-	S	O	O
	O	O	O	O	O	O	-	-	-	O	O	O
	O	O	O	P	P	P	O	P	P	O	P	P
	O	O	P	O	O	O	P	O	O	P	O	O
	-	-	-	-	O	P	-	O	P	-	O	P
	-	-	-	-	O	O	-	O	O	-	O	O
	O	O	P	P	P	P	P	P	P	P	P	P
	-	O	O	P	O	P	O	O	P	O	O	P
	O	O	O	O	O	P	O	O	P	O	O	P
	-	-	-	-	O	O	-	O	O	-	O	O
	-	-	-	-	O	O	-	O	O	-	O	O
	S	S	S	S	O	O	S	O	O	S	O	O
	-	-	-	-	-	-	S	-	-	S	-	-
	-	P	P	-	S	S	P	S	S	P	S	S
	-	O	O	P	O	P	O	O	P	O	O	P
	-	-	-	-	O	O	-	O	O	-	O	O
	-	-	-	-	O	O	-	O	O	-	O	O
	-	-	-	-	O	O	-	O	O	-	O	O
	-	-	-	-	O	P	-	O	P	-	O	P
	O	O	O	O	O	O	O	O	O	O	O	O
	-	P	P	O	O	-	-	-	-	-	-	-
	-	-	O	P	P	O	P	P	O	P	P	O
	-	-	O	O	O	P	O	O	P	O	O	P
	-	-	O	O	P	P	-	-	-	-	-	-
	O	P	P	P	-	-	-	-	-	-	-	-
	-	-	-	-	-	-	P	P	P	P	P	P
	S	S	S	S	S	S	P	S	S	S	S	S
	-	-	O	O	O	O	O	O	O	O	O	O
	-	-	O	O	O	O	-	-	-	-	-	-
	-	-	O	O	O	P	-	O	O	-	O	O
	-	-	O	O	O	O	O	O	O	O	O	O
	-	-	O	O	O	O	O	O	O	O	O	O
	-	-	O	O	O	O	O	O	O	O	O	O
	-	-	-	-	-	-	O	O	O	-	-	-
	O	O	O	O	O	O	O	O	O	O	O	O
	O	O	O	O	O	O	O	O	O	O	O	O
	S	S	S	S	S	S	S	S	S	S	S	S
	-	-	O	O	O	O	O	O	O	O	O	O
	-	-	-	-	-	-	-	-	-	-	-	-
	-	-	O	O	O	O	O	O	O	O	O	O
	O	O	O	O	O	O	O	O	O	O	O	O
	-	-	-	-	-	-	P	P	P	-	-	-

### Exterior

Aero-halogen headlamps with impact-resistant lenses

Tinted glass

Mirrors, manual; black (XL); bright (XLT)

Removable tailgate with bright handle

Centre high-mount stop lamp

### Interior

Driver-side air bag supplemental restraint system

Seats: vinyl bench (XL Regular Cab); cloth flight bench seat with power lumbar support (XLT Regular Cab); knitted vinyl bench, including vinyl rear bench (XL SuperCab); cloth bench, including cloth rear bench (XLT SuperCab)

Radios: Electronic AM with digital clock (XL); electronic AM/FM stereo with digital clock (XLT)

Colour-keyed cloth headliner (XLT)

Voltmeter, oil pressure and temperature gauges with indicator lights

Power Point electrical accessory outlet

Vent windows

Leather-wrapped steering wheel (XLT)

Interval wipers

### Functional

Twin-I-Beam independent front suspension (4x2); Twin-Traction Beam front suspension (4x4)

Power brakes, rear anti-lock system

4.9L EFI I-6 engine, 5-speed manual transmission (see page 12 for all available powertrains)

Automatic locking front hubs (4x4)

Heavy-duty gas-pressurized shock absorbers

Power steering

Two-speed transfer case (4x4)

Five P215/75R15 SL BSW All-season tires (Regular Cab 4x2)\*

Five P235/75R15XL BSW All-season tires (SuperCab 4x2; 4x4)\*

\*See your Ford Dealer for a complete list of tires.



## WARRANTY COVERAGES

Ford of Canada's vehicles are backed by:

- 36 month/60,000 km bumper-to-bumper no deductible warranty
- Corrosion perforation protection warranty on all sheet metal for 6 years/160,000 km (whichever comes first)

## ROADSIDE ASSISTANCE PROGRAM

Every new Ford of Canada car and light truck now includes the assurance of an emergency Roadside Assistance Program during the 3-year/60,000 km bumper-to-bumper warranty period. Help is a toll-free phone call away 24 hours a day — anywhere in Canada or the continental United States — should you ever need any towing assistance, fuel delivery, tire change, a jump start or even help when you're locked out of your vehicle. Ask your Ford of Canada Dealer for complete details on this outstanding Program.



Ford of Canada encourages the use of safety belts and child/infant restraints.

## CUSTOMER SERVICES

Ford of Canada is proud to offer a wide range of customer services including vehicle financing and leasing, replacement parts and after-sale services. See your Dealer for more details.



# Motorcraft

QUALITY REPLACEMENT PARTS  
FROM FORD



## CIBC FORD VISA CARDS

CIBC FORD VISA Cards are an ideal way to save for your next vehicle.

- Choose from the CIBC FORD VISA Card or CIBC Ford Gold VISA Card — both earn 5% rebates on your everyday CIBC FORD VISA purchases.
- Rebates can be directly applied to the purchase or lease of any new Ford of Canada vehicle.
- Program details and applications are available from your Dealer or by calling toll-free 1-800-465-CIBC.

## ASK YOUR DEALER

Following the publication of this catalogue, certain product changes may have occurred. Ford Motor Company of Canada, Limited reserves the right to make these changes without incurring obligations. Your Dealer is your best source for up-to-date information.

Please Note: Selected photographs in this catalogue depict vehicles with passive restraint motorized systems that are used in U.S. vehicles only. All Ford of Canada vehicles, with the exception of Villager, are equipped with 3-point manual lap and shoulder belt safety restraint systems for outboard passengers.



Ford has chosen to print  
this catalogue on recycled  
paper containing 10% de-inked  
post-consumer materials and  
uses vegetable inks.



**Quality is Job 1. It's working.**