

REWARD YOURSELF WITH NEW FORD METEOR





NEW METEOR - MORE REWARDING THAN EVER

In the world of compact sedans, Ford introduces a fresh, exciting combination of style and practicality that adds up to a positively rewarding experience. The new Meteor. With its totally new, aerodynamically efficient and handsome styling, a new engine, improved transmission, brakes and suspension and roomy new interior, Meteor is set to raise the standards by which cars in its class are judged. In addition to a host of new features, both the top-value GL and luxurious Ghia models offer a range of options for your enjoyment.

New Meteor's European-inspired styling is shaped for lower wind resistance, with its upswept beltline, high bootline and steeply raked bonnet. And with styling efficiency comes the practicality of sedan configuration, with a capacious, useful boot, and a split fold-forward rear seat backrest.

METEOR GHIA - PACKED WITH LUXURY

In the luxurious, top-of-the-line Meteor Ghia colors are in soft harmony. Seats are faced in rich velours. Door-to-door loop pile carpet is also featured on door pockets and kick panels. Full wrap-over moulded door trims have contrasting velour inserts.

Thoughtful touches include a front passenger seat under-tray, centre console storage compartment, interior lamp with map spotlights, and an illuminated entry system. For the driver there's an array of truly functional aids, including comprehensive instrumentation, a driver's left footrest, electric remote-control rear view mirrors, power door locks, plus the innovative sedan feature of a rear window wash/wiper to assist rearward visibility.



Meteor Ghia Major Standard Features

- All-new 1.6 litre overhead camshaft engine
- Rack and pinion steering
- Front wheel drive
- 4 wheel independent suspension
- 5-speed manual transmission
- 4-wheel disc brakes
- Laminated windscreen
- Tinted side and rear glass
- Heated rear window
- Rear window washer/wiper
- 2-speed wipers with intermittent setting
- Illuminated entry system
- Electric remote control rear view mirrors
- Comprehensive instrumentation which includes a tachometer
- Adjustable tilt steering column
- Driver's seat height and tilt adjustment
- Adjustable lumbar support on driver's seat
- Luxurious velour trim
- Quartz digital clock
- Rear seat centre armrest
- Soft-feel steering wheel
- Front door courtesy lamps
- 60/40 split rear seat backrest
- AM/FM radio stereo/cassette with four speakers
- Power door locks
- Remote boot and fuel filler releases
- Child-proof setting on rear door locks



SMOOTHNESS AND COMFORT FOR NEW SATISFACTION

Detailed design and exhaustive engineering have made smoothness and comfort an integral part of the Meteor experience. Advanced aerodynamic design helps reduce wind noise, while the engine, transmission and suspension have been engineered to minimise the intrusion of noise and vibration into the passenger compartment.

Meteor's roomy new interior brings you a rewarding sense of wellbeing. A full flow-through ventilation system features new instrument panel vents and a 4-speed fan. In the instrument binnacle, a logical, clear arrangement of essential information is displayed by the speedometer, and the temperature and fuel gauges. Below these is an array of function warning/indicator lights including those for the turn signals and headlight high beam. The neat centre console contains heater demister slide controls, AM/FM radio stereo cassette, and a handy storage

bin. Between the two front bucket seats lies a useful tray for trinkets, loose change and other small items.

Remote controls for the boot and fuel filler release are right next to the driver's seat. In the rear a 60/40 split fold-forward rear seat backrest permits you to easily extend bootspace and provide seating for up to two rear passengers. Meteor has been designed, built and equipped for your complete enjoyment.



METEOR GL - GREAT VALUE IS ONLY ONE OF ITS REWARDS

The new Meteor GL offers you all the significant styling advances of the breed.

Beneath the sleek exterior is a world of rewarding comfort, with a subtly integrated color scheme and pleasantly textured tweed seating. Front bucket seats adjust easily to your preferred position. The steering wheel and all controls fall easily to hand. You'll appreciate features such as the laminated windscreen for added safety, intermittent windscreen wipers, the digital quartz clock, the AM/FM radio stereo cassette with rich, two-speaker sound.



Meteor GL Major Standard Features

All-new 1.6 litre overhead cam engine
Front wheel drive
Four wheel independent suspension
4 speed manual transmission
Turbo-cooled front disc brakes
Laminated windscreen
Tinted side and rear glass
Heated rear window
Manual remote control
right hand exterior rearview mirror
Two-speed wipers with an intermittent setting
Front mudflaps
Remote boot and fuel lid releases
Soft textured tweed seat trim
Quartz digital clock
Child proof setting on rear door locks
60/40 split fold forward rear seat backrest for extra boot space
Driver's seat tilt adjustment
AM/FM radio stereo/cassette with two speakers
Full wheel covers

THOUGHTFUL METEOR IDEAS FOR LASTING PLEASURE

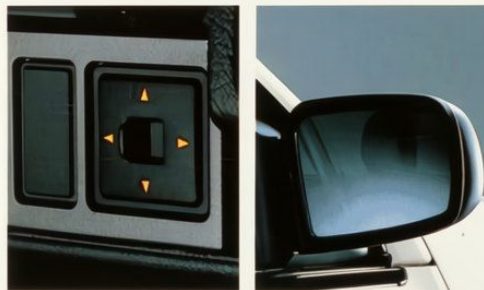
1. A practical and innovative feature on the Ghia sedan is a rear window wiper/washer so you can maintain clear rearward visibility. Both Ghia and GL models are fitted with a heated rear window.



2. Meteor gives you the added convenience of remote releases to open the boot and petrol filler lid.



3. You keep an eye on your progress with the aid of this digital quartz clock, mounted on the instrument panel where both driver and front seat passenger can view it.



4. Meteor Ghia offers electrically operated left and right hand exterior rear view mirrors. On the GL there's a manual remote control mechanism for the driver's side exterior mirror.



5. You can select a preferred steering wheel position with Meteor's tilt adjustable steering column. (Ghia sedan only.)



6. Ghia model features a convenient illuminated entry system, comprising an illuminated driver side door lock and ignition lock.

7. Both Meteor models feature a practical 60/40 split fold-forward rear seat backrest which allows you to stow extra-long items into the boot through to the rear seat, and still leave room for one or two rear seat passengers.



8. Meteor Ghia driver's seat features adjustment for seat cushion tilt, fore and aft location, and back rake, plus a separate adjustment of the seat back for lumbar support that adds to long-distance comfort.



9. In addition to a centre console storage compartment and a trinket tray, Meteor Ghia provides this extremely useful storage tray under the front passenger's seat.

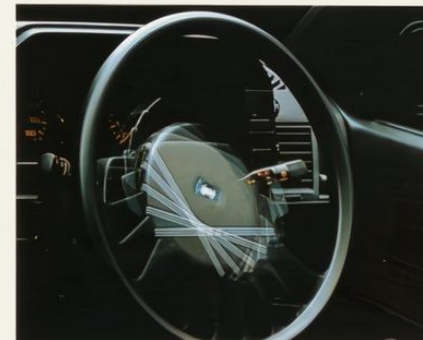


OPTIONS FOR EXTRA POWER PRESTIGE AND COMFORT

1. On Ghia sedans with manual transmission you can opt for the 1.6 litre engine with electronic fuel injection for extra performance, and smoothness.



2. Power steering is available as an option on Ghia Models fitted with automatic transmission—parking and manoeuvring in tight spots becomes that much easier.



3. Ghia and GL models can now be specified with a highly efficient factory-fitted air conditioner with dual settings. Maximum for really hot weather, Economy for milder weather.



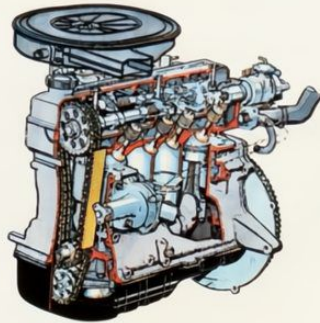
MORE POWER TO THE MIGHTY METEOR

Meteor boasts an all new, 1.6 litre engine which is not only powerful but incorporates many advanced features. It is quiet, light weight and delivers outstanding fuel economy and reliability.

The new powerplant is of overhead camshaft design, featuring aluminium cross-flow cylinder head with multi-spherical combustion chambers and inclined inlet and exhaust valves. These advanced features combine with high energy electronic ignition and a high performance two-barrel, two-stage carburettor to give Meteor a sensible balance of strong performance with excellent fuel economy.

Lightweight valve construction means less power is needed to drive the engine—resulting in more power being available to the driving wheels. A newly designed lightweight cylinder block and re-designed valve mechanism help make Meteor engines surprisingly quiet. They are engineered for reliability and driveability.

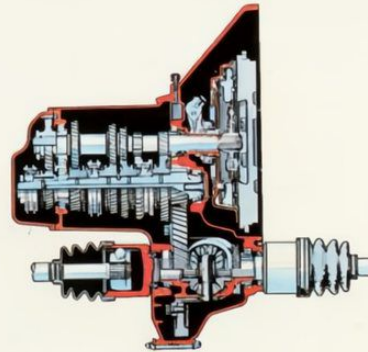
On Meteor Ghia sedans equipped with manual transmission you can now opt for fuel injection. This advanced fuel-injection system is multi-point and is controlled by a rapid processing digital computer. This results in smooth acceleration, superb durability and extra passing power.



Smooth shifting. Quiet running.

The smooth-shifting Meteor manual transmission has a re-designed linkage which incorporates a stabiliser rod to maintain a constant 'gear lever to transmission' relationship. Gear teeth have been re-designed for quiet running. Tapered roller bearings and a high-efficiency lubrication system all contribute to outstanding transmission durability.

Meteor's new automatic transmission is of the lock-up torque convertor type, designed to save fuel by eliminating the slippage which normally occurs in conventional automatics. In top gear, Meteor's torque convertor drives the car without slippage, which saves on fuel.

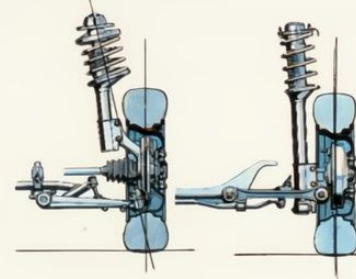


Longer wheelbase, wider track, improved suspension.

Meteor's wheelbase is now 35 mm longer than before. This results in better ride, improved stability, with a satisfyingly secure feeling on corners. Its fully independent suspension system includes struts/coil springs on the front and rear. Anti-swerve front suspension and self-stabilising rear suspension increase driving confidence.

Other features include:

- 20 mm wider rear track to enhance stability
- new design suspension bushes to provide additional comfort through extra quietness
- negative camber rear suspension to maximise tyre to road contact area.

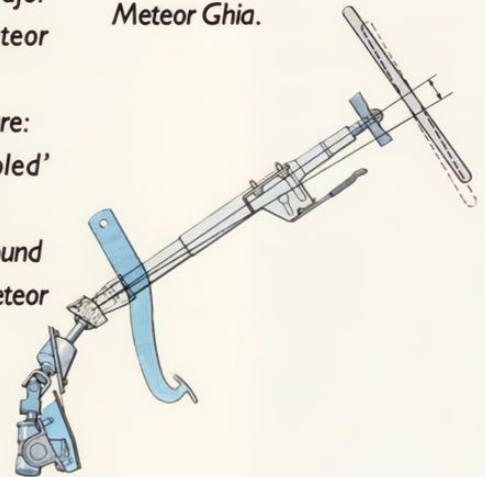


Power to stop.

Greater stopping power and service life are the major improvements in new Meteor braking system.

Features of this system are:

- new, large 'turbo cooled' ventilated front disc brakes
- self-adjusting brakes all round
- 4 wheel disc brakes on Meteor Ghia



- brake pressure proportioning valve to minimise rear wheel lock-up under varying conditions.



Precision steering.

Meteor maintains its reputation for responsiveness and good road feel through rack and pinion steering. For added driving ease, optional power steering is available with automatic transmission on Meteor Ghia.

About this brochure.

This brochure is designed to provide you with a general introduction to the Ford Products (including available optional equipment) referred to, and should be read in conjunction with the latest specification sheets. Because of changes in conditions and circumstances Ford® reserves the right, subject to all applicable laws, at any time, at their discretion, and without notice to discontinue or change the features, designs, materials, colours and other specifications and the prices of their products, and to either permanently or temporarily withdraw any such products from the market without incurring any liability to any prospective purchaser or purchaser.

The latest specification sheet should be referred to for information on the availability, ordering and use of optional equipment. Always consult an Authorised Ford Dealer for the latest information with respect to features, specifications, prices, optional equipment and availability before deciding to place an order.

*FORD MOTOR COMPANY
OF AUSTRALIA LIMITED
(Incorporated in Victoria)
FORD SALES COMPANY OF
AUSTRALIA LIMITED
(Incorporated in Victoria)

Registered offices:
1735 Sydney Road,
Campbellfield,
Victoria 3061.

Printed October 1985



Some specifications, features and equipment of early production Meteors will, or may, differ from those depicted and/or described in this brochure.



Ford Australia-We're moving with you.

F O R D M E T E O R

