

Ford Laser Sedan.



Have you driven a Ford... lately?





Some people think they have to give up the pleasure of motoring because they choose

Laser Ghia sedan is equipped with a 1.8 litre electronically fuel injected, 16 valve overhead camshaft engine.

And that means the going is easy.

Whether you cruise through the countryside or zip around the city, it responds

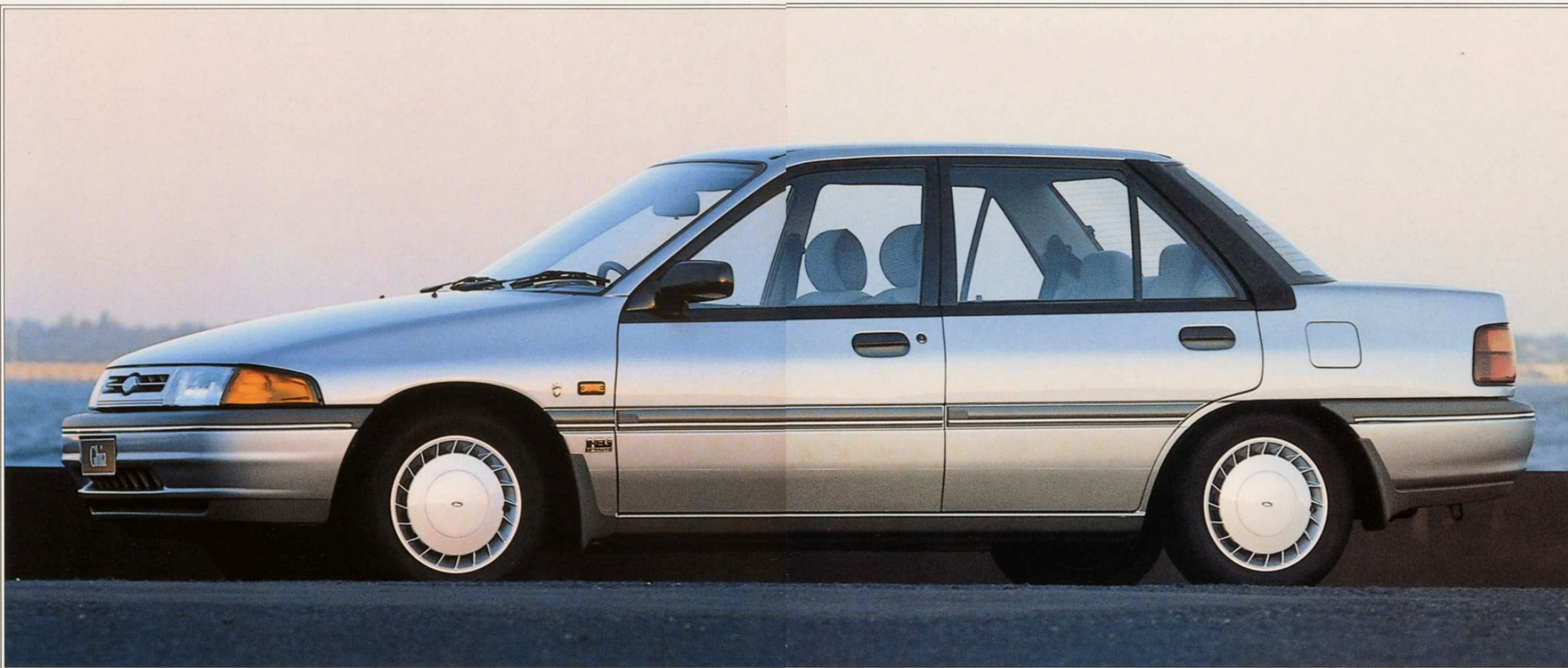
standard equipment to Ghia. It provides a precise and positive feel and four wheel disc brakes bring you to a reassuring stop.

The advanced new extra cost optional electronic four speed automatic transmission has been designed and engineered for new Laser.

rear seat passengers. With optional air-conditioning, cold air can be directed to the rear as well.

Tinted side and rear glass also help to keep the interior cool.

It touches like these which put new



to drive a smaller car.

These people haven't driven the new Laser sedans.

Take new Laser Ghia. Its elegant styling, impressive array of standard features and quiet ride all add up to driving enjoyment.



with a reassuring quickness. The advanced new engine delivers excellent performance and provides good fuel economy.

Laser's five-speed manual transmission is light and easy to use.

Power assisted steering is fitted as

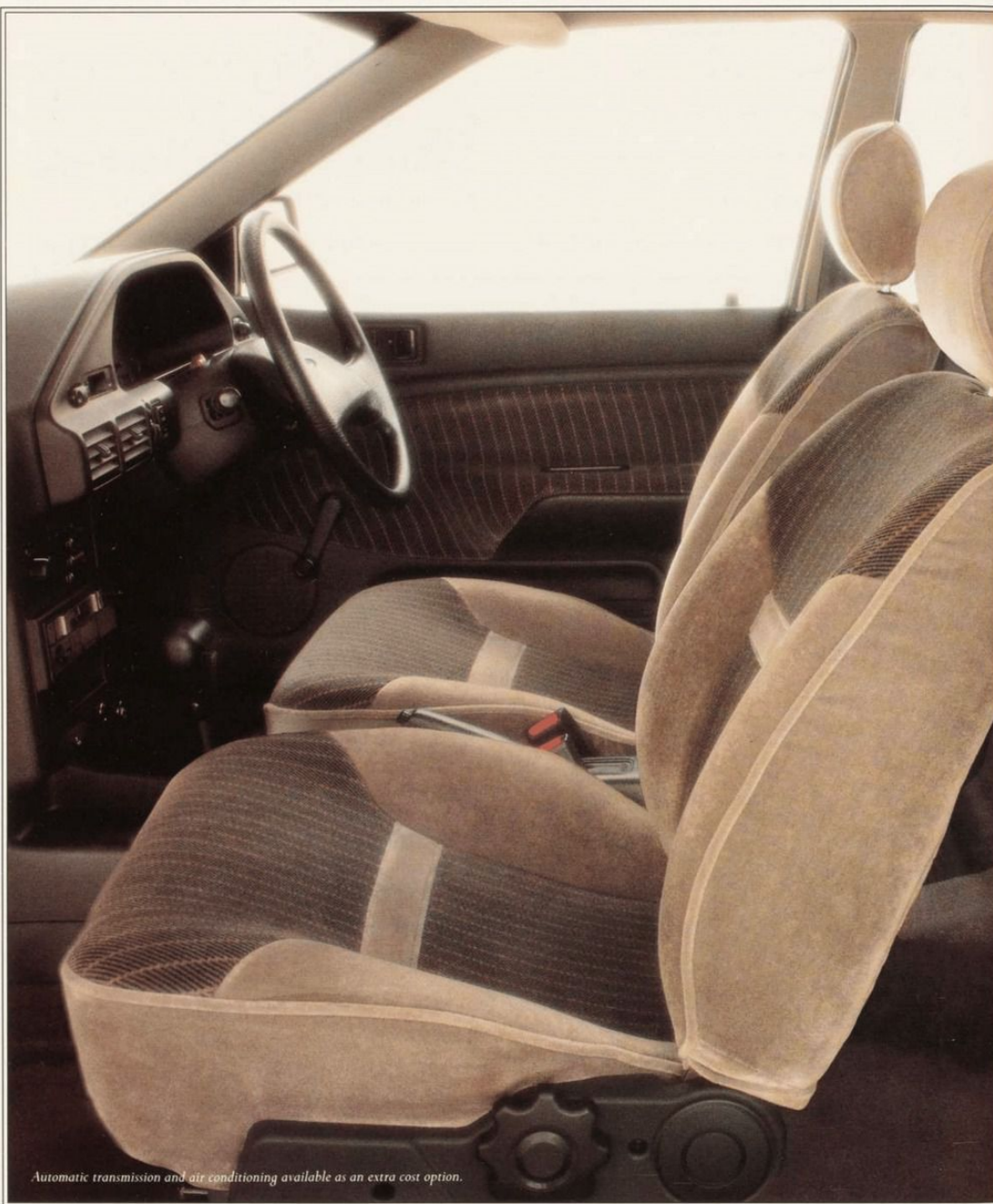
A computer automatically changes the shift pattern to best suit the load conditions. There is also a "HOLD" function which helps to maintain traction on slippery surfaces.

With the heater on, warm air can be ducted to the rear footwell, for the comfort of

Laser in front of other small cars.

But of course you wouldn't expect anything less from a Ghia.

It's a name which, over the years, has become synonymous with only the finest Ford vehicles.



Automatic transmission and air conditioning available as an extra cost option.

The expression "armchair comfort" springs to mind inside Laser Ghia.

The velour upholstery is pleasing to the eye and soft to the touch and co-ordinates with

the soft, cut-pile carpet.

The driver's seat can be adjusted in four different ways and it features lumbar support. To further enhance driver comfort and



visibility, a tilt adjustable steering column is standard equipment.

These thoughtful features combine to help the driver select the most comfortable

driving position.

The plush interior of the new Laser Ghia means you and your passengers will travel in comfort and style.



Automatic transmission and air conditioning available as extra cost options.

As you would expect from any car which wears the Ghia badge, Laser Ghia sedan is comprehensively equipped.

A deluxe four-speaker stereo system is

standard. It gives you twelve channel AM/FM radio station presets, a cassette player, search and scan options and Dolby noise reduction.

Instrumentation is comprehensive and



Four speaker sound system.



Power mirrors standard on Laser Ghia Sedan.



60/40 split rear seat back rest.



Remote fuel cap and boot release.



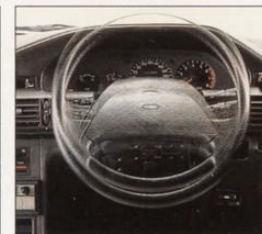
Central locking standard on Laser Ghia.



Optional 4-speed electronic auto transmission.



Intermittent windscreen wiper.



Tilt adjustable steering wheel.

easy to read. It includes an electronic analogue speedometer, tachometer, temperature and fuel gauges.

There are warning lights on the dash which tell you if a globe is out in a brake light, if the fuel or washer fluid is low and a buzzer that lets you know if you've left your lights on.

Closer inspection of Laser Ghia reveals a number of thoughtful touches.

Like the remote boot and fuel filler release. Maplights. A vanity mirror on the passenger's visor. A rear window demister. An illuminated ignition lock. And a digital clock.

Power mirrors are standard, as is central locking.

The rear seat back is split 60/40, and folds down to allow large loads to be carried in the boot.

When it's not folded down outboard rear seat passengers can enjoy a padded centre armrest.

All of which makes travelling in Ghia a most rewarding experience.





For many years, Laser has set the standard for small cars.

New Laser GL sedan raises this stan-

dard to new heights of practicality and style.

It comes equipped with an efficient 1.6 litre 16 valve engine, coupled to either a 5-speed manual or, for a little extra, a three speed automatic transmission.

The new 16 valve head design features

four valves per cylinder which enables the engine to work more efficiently, providing high levels of power and torque across the entire rev range.

This gives quick, smooth acceleration, which assists overtaking and helps to deliver

excellent fuel economy. If you choose the extra cost optional power steering, it means your Laser will be even easier to handle.

Laser GL sedan is designed to let you enjoy years of reliable motoring.

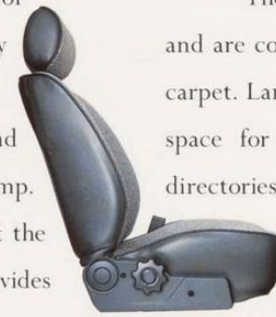
And to become a trusted friend.



Laser GL has a number of features which make it extremely practical and easy to use.

There's a remote boot and fuel filler cap release. A boot lamp. And a high-mounted stop lamp at the rear. A full centre console provides a handy storage area.

A security coded two-speaker AM/FM



The seats have attractive cloth inserts and are complemented by a durable loop pile carpet. Large seat back pockets provide useful space for items such as maps and street directories. The rear seat back rest is split 60/40, and folds down to increase luggage capacity.

And as in all Lasers, warm air can be ducted to the rear footwell, for the comfort of



radio-cassette with ten channel pre-sets provides entertainment while you drive. And a separate digital clock is a useful inclusion in the dash.

back-seat passengers.

It's a car you'll be proud to own. For many years to come. After all, it was built to be a better Laser.



Air conditioning available as an extra cost option.

ACCESSORIES FOR YOUR NEW LASER.

There's a new line-up of stylish accessories designed to enhance, help protect and extend the carrying capacity of the exciting, new range of Lasers. The best time to choose your accessories is when you choose your new Laser. Approved Ford accessories from your Ford dealer meet our exacting specifications and only Ford Accessories are backed by the Ford dealer 12 month/20,000 km express parts warranty.

AIR CONDITIONING.

Ford selectaire air conditioning is fully integrated and when operated with the car's heating and ventilation system provides a wide range of climate control.



You can select cool, refreshing air on hot days and de-humidified air for fast demisting during cold winter months.

HEADLAMP GUARDS.

Designed to blend with Laser's modern styling. Made from tough acrylic to help protect valuable headlamps against damage from road stones and small flying objects.



WEATHERSHIELDS.

Transparent, acrylic weathershields help protect driver and front seat passenger



against wind and light rain when driving with front windows open.

REAR LOUVRE.

A stylish accessory that reduces sunload on the rear window and helps prevent heat build up in the passenger compartment.

DOOR BINS.

A convenient addition to Laser's interior storage. Door bins are ideal for maps, sunglasses etc. and are available in three colours to match all the new Laser interior trim combinations.

TAILORED CARPET MATS.

Made from high quality cut pile carpet with robust overlocking. These mats are



contoured to fit footwells and are available for front and rear in three fashion colours to match all Laser interior colours.



SKI BARS.

Help extend Laser's carrying capacity. Manufactured from extruded aluminium with a black anodised finish. Easily fitted and removed for storage when not in use.

TOWBAR.

Specially designed and tested for fitment to new Laser. With a maximum load capacity of 500 kg, the towbar provides the link between Laser and many towing applications. Wiring harness and plug kit are also available.

SPORTS ROAD WHEEL.

These stylish alloy sports road wheels add a distinctive sporty look to the new Laser. They feature the latest spoke design and are finished in white baked enamel.



CAR CARE PRODUCTS.

A quality range of car care products are available to help keep your new Laser looking its best at all times.

Products include those suitable for use inside, outside and under the bonnet.





THE AUSTRALIAN QUALITY AWARD.

Enterprise Australia has named Ford's Sydney Assembly Plant (where the Laser is built) as the recipient of its coveted award for "Outstanding



Achievement in Total Quality Control".

The people of Sydney Plant are proud of this prestigious award and Ford is committed to ensuring its high standards are maintained.

All Ford vehicles sold throughout Australia are backed by Fordcare after sales service. Fordcare is comprised of a number of individual service products designed exclusively for Ford vehicles and their drivers. These include technical support back-up, diagnostic equipment, approved Ford/Motorcraft replacement parts and parts and service warranties.



This brochure is designed to provide you with a general introduction to the Ford Products (including available optional equipment) referred to, and should be read in conjunction with the latest specification sheet. Because of changes in conditions and circumstances Ford* reserves the right, subject to all applicable laws, at any time, at its discretion, and without notice to discontinue or change the features, designs, materials, colours and other specifications and the prices of its products, and to either permanently or temporarily withdraw any such products from the market without incurring any liability to any prospective purchaser or purchaser.

The latest specifications sheet should be referred to for information on the availability, ordering and use of optional equipment. Always consult an Authorised Ford Dealer for the latest information with respect to features, specifications, prices, optional equipment and availability before deciding to place an order.

*FORD MOTOR COMPANY OF AUSTRALIA LIMITED. (Incorporated in Victoria.) Registered Office: 1735 Sydney Road, Campbellfield, Victoria 3061.

Your Ford Dealer is:

Printed in March 1990.

Have you driven a Ford... lately?

