

A new dimension in full-size,  
luxury touring.

C | A | D | I | L | L | A | C



S | T | Y | L | E

Introducing  
the Cadillac Touring Sedan.



## Cadillac Touring Sedan

### A COMMITMENT TO SATISFY THE DISCRIMINATING DRIVER.

For the first time ever, an automobile company has won the coveted Malcolm Baldrige National Quality Award for its world-class achievements. Cadillac. Presented on behalf of the U.S. Government, this award represents Cadillac's total commitment to listen-and respond-to the needs of its customers.

The new Cadillac Touring Sedan responds to those discriminating drivers who want full-size

luxury and comfort with spirited handling and performance. Thanks to technological advancements such as new Computer Command Ride. The refined, yet substantial, power of a 4.9 liter V8 engine coupled with a performance final drive ratio. The taut handling capabilities of a fully independent touring suspension, complete with high-performance wheels and tires. The precision of fast-ratio power steering. And

the reassuring control of anti-lock brakes.

Of course, an automobile of this caliber should also surround passengers in luxury and the Cadillac Touring Sedan is no exception. Consider the spacious interior of this six-place sedan. Here, ultra-soft premium Beechwood leathers are tailored to seating areas. Driver and front passenger seats feature power adjusters and recliners, and integral lumbar support.



Tailored French seamwork adds distinction to leather seating areas.



The exclusive Cadillac Touring Sedan interior shown with American walnut accents and Beechwood ultra-soft leather seating areas.

C | A | D | I | L | L | A | C



S | T | Y | L | E



# Cadillac Touring Sedan

## A COMMITMENT TO SATISFY THE DISCRIMINATING DRIVER.

For the first time ever, an automobile company has won the coveted Malcolm Baldrige National Quality Award for its world-class achievements. Cadillac. Presented on behalf of the U.S. Government, this award represents Cadillac's total commitment to listen—and respond—to the needs of its customers.

The new Cadillac Touring Sedan responds to those discriminating drivers who want full-size

luxury and comfort with spirited handling and performance. Thanks to technological advancements such as new Computer Command Ride. The refined, yet substantial, power of a 4.9 liter V8 engine coupled with a performance final drive ratio. The taut handling capabilities of a fully independent touring suspension, complete with high-performance wheels and tires. The precision of fast-ratio power steering. And

the reassuring control of anti-lock brakes.

Of course, an automobile of this caliber should also surround passengers in luxury and the Cadillac Touring Sedan is no exception. Consider the spacious interior of this six-place sedan. Here, ultra-soft premium Beechwood leathers are tailored to seating areas. Driver and front passenger seats feature power adjusters and recliners, and integral lumbar support.



Tailored French seamwork adds distinction to leather seating areas.



Distinctive cloisonné identification highlights the Touring Sedan decklid.

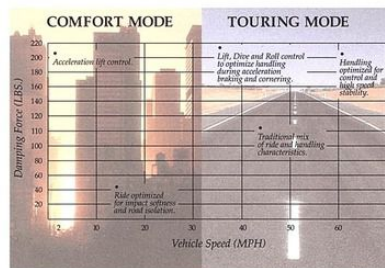


## IMPRESSIVE YET REFINED POWER.

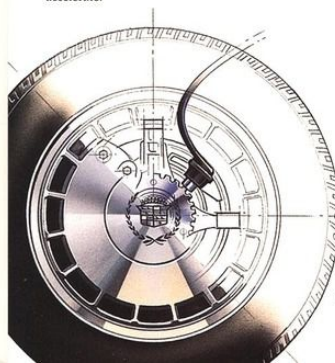
A new, Cadillac-exclusive 4.9 liter V8 with sequential port fuel injection is rated at 200 horsepower and 275 lbs.-ft. of torque, more torque than any front-drive automobile sold in the U.S. Coupled with a new electronically controlled four-speed automatic transmission, the powertrain system delivers an EPA estimated 26 mpg highway—the highest highway mileage of any V8-powered luxury car.

## CUSTOM-TAILORED ROAD FEEL.

A fully independent touring suspension provides you with crisp cornering, yet helps isolate you from uneven road surfaces. To further tailor your driving, Cadillac announces an advanced speed-sensing suspension, Computer Command Ride. It eases city driving while providing impressive highway control and stability. Dampers automatically shift between "comfort," "normal," and "touring" modes in 15/100 of a second as you stop, start, corner or accelerate.



CORRELATION BETWEEN SUSPENSION FIRMNESS AND VEHICLE SPEED



## AN UNCOMPROMISING COMMITMENT TO SAFETY.

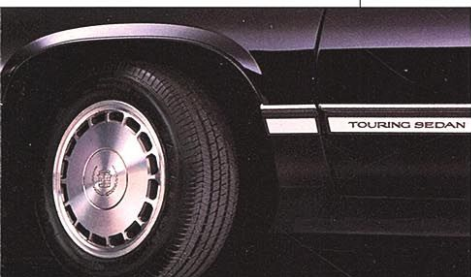
An advanced, standard Teves anti-lock brake system reduces the chance of wheel lock-up during severe braking on dry pavement or when braking on virtually any wet or slippery surface. Furthermore, a rugged safety cage, made up of strong steel sections along the roof, door pillars and rocker panels, surrounds passengers in safety.



The exclusive Cadillac Touring Sedan interior shown with American walnut accents and Beechwood ultra-soft leather seating areas.

# Cadillac Touring Sedan

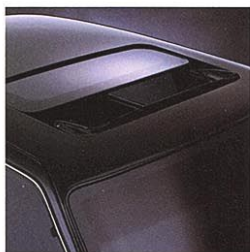
Offered in five exterior colors: Cotillion White, Dark Slate Gray, Black Sapphire, Carmine Red and Sable Black (shown).



16" forged aluminum alloy wheels reduce unsprung mass. They're fitted with high-performance, 16" Goodyear Eagle GA tires.



Eurostyle, body-colored door handles add touring distinction.



An available Astrorof features a retractable/tiltable glass panel, adjustable sunshade and air deflector (reduces headroom slightly).

## 1991 SELECTED STANDARD AND AVAILABLE FEATURES

### ■ INDICATES NEW STANDARD AND AVAILABLE FEATURES

#### STANDARD FEATURES

##### Cadillac-exclusive Total Ownership Priority Services:

- Cadillac Consumer Relations Center—24-hour toll-free assistance (1-800-458-8006), 365 days a year
- Gold Key delivery system
- Cadillac Roadside Service,\*—professional help is a toll-free call away (1-800-882-1112), 24 hours a day, 365 days a year
- You get on-the-spot assistance nights, weekends, holidays
- Cadillac's 4-year/50,000-mile Gold Key Bumper to Bumper warranty\* and 6-year/100,000-mile rust-through protection
- There is no deductible

\*See your dealer for terms of this limited warranty.

#### COMFORT AND CONVENIENCE

- Air distribution duct, rear seat—with direction/shut-off control
- Door locks, automatic—with central door unlocking from driver door and luggage compartment
- EZ-KOOL—solar control glass
- Solar sensor—two-way
- Visors, padded dual sun—with mirrors and extensions
- Body computer module
- Climate control, electronic
- Retained accessory power

#### SEATING/INTERIOR

- Armrest, front-seat storage
- Assist straps, headliner
- Floor carpet—Tallot
- Floor mats, front and rear
- Interior trim—American walnut accents
- Seats: six-passenger, dual-comfort 45/55 split front (three-passenger); Beechwood ultra-soft leather seating areas with French seams; six-way driver and passenger power seat adjusters and recliners; lumbar supports; front seatback pockets; full-across rear-seat headrests
- Armrest, rear-seat—center
- Stowage—rear package shelf

#### MUSIC SYSTEM

- Delco AM stereo\*\* (with expanded tuning)/FM stereo radio, cassette player, five-band graphic equalizer, six speakers
- Antenna, power

\*\*Receives C-Quam, stereo broadcasts. Most AM stereo stations across the country broadcast in C-Quam; but some do not. Check with your local stations for compatibility in your area.

©1990 GM CORP. All rights reserved.

Litho in U.S.A. 12/90

Let's Get It Together...Buckle Up.

Cadillac, the Cadillac emblem, and the GM emblem are registered trademarks of the General Motors Corporation.

Please call 1-800-333-4CAD for product literature and the location of your nearest Cadillac dealer.

#### CONTROLS AND INSTRUMENTATION

- Decklid lock cover—cloisonné
- Defogger, electric rear window
- Grille-mounted wreath/crest
- Identification—Touring Sedan
- Illuminated entry system
- Mirrors, heated outside rear-view—power, with breakaway design
- Steering wheel, tilt—leather-trimmed rim
- Twilight sentinel
- Windshield wiper, controlled-cycle

- Clock, digital (in radio)
- Computer diagnostics
- Cruise control
- Defogger, front side windows
- Door locks—power
- Fuel data center
- Fuel gauge—digital

- Indicators, low brake fluid, fuel, windshield washer fluid
- Instrument cluster, analog
- Lock-only switches, rear door—power

- Luggage compartment lid release—power
- Trip odometer—push-to-reset
- Turn signal lever, multi-function
- Window, express-down, driver—power
- Windows—power

#### APPEARANCE AND PROTECTION

- Brake/transmission shift interlock (apply brake pedal to shift from park)
- Child safety lockout, front/rear window, driver-controlled—power
- Child safety lockout, rear doors—manual
- Paint treatment, monochromatic—five clearcoat colors
- Styling accents—body color
- Styling enhancements
- Cornering lamps, front
- Galvanized steel, two-sided, in body and underbody panels
- Headlamps, composite tungsten-halogen

Keys, body/ignition, 23K gold-finish

Luggage compartment, carpeted

Safety belts, lap/shoulder: driver, front-passenger and outboard rear-seat positions

Safety glass: laminated windshield, tempered side/rear glass

Stop lamp, center high-mount

Supplemental Inflatable Restraint system (air bag) in steering wheel hub

Theft-deter. system, PASS Key.

#### ENGINE/CHASSIS

- 4.9 liter V8 with sequential port fuel injection
- Anti-lock brake system
- Computer Command Ride
- Oil life indicator
- Transmission, automatic four-speed; electronic shift control, overdrive, Cadillac-exclusive viscous converter clutch
- Wheels, Cadillac-exclusive
- Park brake release, automatic

#### AVAILABLE FEATURES

Available option packages:

- Cadillac option package ISC
- Mirrors, illuminated—driver/passenger vanity visors, variable intensity lighting
- Luggage compartment lid, power pull-down
- Mat, luggage compartment
- Cadillac option package 1SD (includes package ISC plus:)
- Fuel filler door release—power
- Instrument cluster, digital
- Mirror, inside rearview automatic dimming—Electrochromic
- Trumpet horn

Available individual features:

#### CONTROLS AND INSTRUMENTATION

- Windshield, heated

#### MUSIC SYSTEMS

- Delco/Bose Gold Series system with compact disc player
- Delco/Bose Gold Series system with cassette player

#### APPEARANCE AND PROTECTION

- Security package—includes remote keyless entry and theft-deterrent system

## 1991 CADILLAC TOURING SEDAN

### SPECIFICATIONS

ENGINE 4.9 liter V8 with sequential port fuel injection

Power 200 bhp @ 4100 rpm

Torque 275 lbs.-ft. @ 3000 rpm

Recommended fuel/tank capacity—Unleaded premium/18.0 gallons usable

Transmission—Four-speed automatic with electronic shift control, overdrive and viscous converter clutch

Final drive ratio (effective) Performance 2.97:1

Suspension—Computer Command Ride,

touring version; fully independent with larger front and rear stabilizer bars; Superlift® rear electronic level control

Steering—Power-assisted fast-ratio rack and pinion; 17.0:1 ratio

Brakes—Teves Mk IV-3 anti-lock; power front disc/rear drum

Wheels—Cadillac-exclusive 16" diamond-finish forged aluminum alloy

Tires—P215/60R16 Goodyear GA blackwall steel-belted

DISPOSITIONS

Wheelbase—2890mm/113.8"

Length—5223mm/205.6"

Height—1401mm/55.2"

Width—1820mm/71.7"

Turning diameter (wall-to-wall)—13.4m/44.0'

Curb weight—1643.9kg/3620 lbs.

Seating capacities (front and rear)—3/3

Headroom front—997mm/39.3"

rear—970mm/38.2"

Legroom front—1067mm/42.0"

rear—1108mm/43.6"

Hip room front—1369mm/53.9"

rear—1369mm/53.9"

Shoulder room front—1499mm/59.0"

rear—1494mm/59.0"

Luggage capacity—0.52 cu. m/18.4 cu. ft.

Specifications as of 12-90

