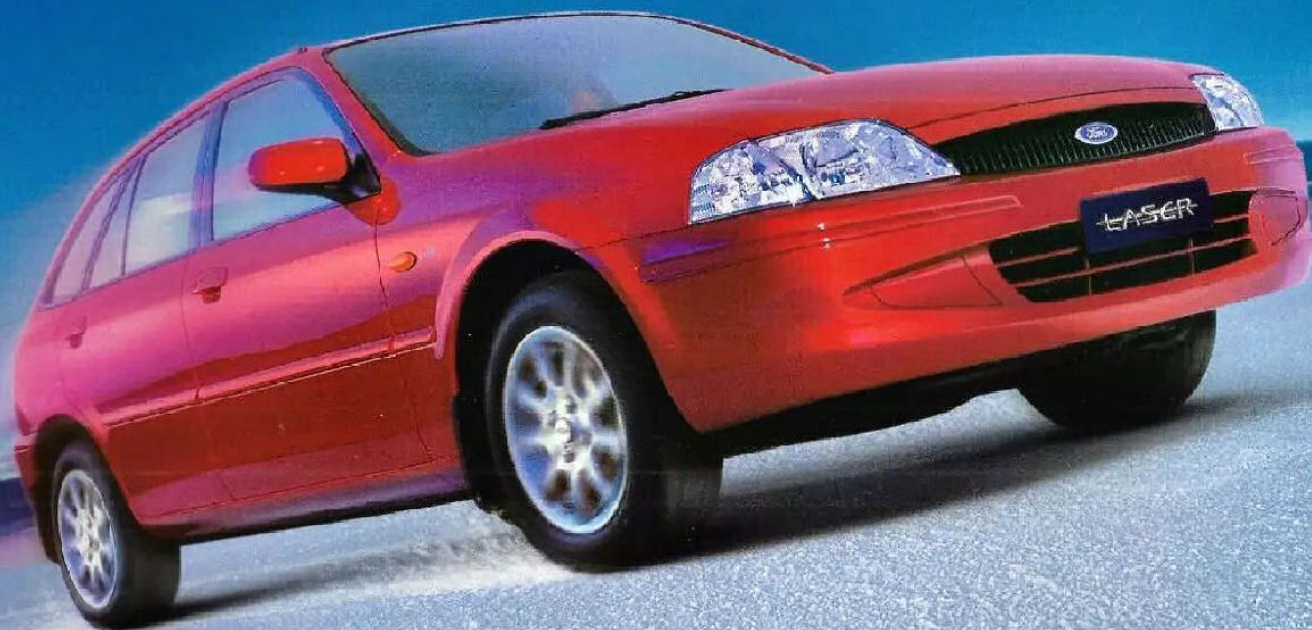


What is it about the Ford Laser?



Live it.

Is it the way you live your life?

Laser puts a lot of driving fun into your lifestyle.

Within Laser's lean, clean body, you'll find a surprisingly big interior. An interior that's not only comfortable for five, but one that's also extremely versatile and big on features.

Both Sedan and Hatch are equipped with driver's airbag, central locking, air-conditioning, power steering and lots more as standard.

Your Laser will be equally at home zipping around the city or out cruising in the country. How? Is it

the high-tech engine's clever combination of power and economy? Or is it the clever combination of supple ride and nimble handling? Yes, it's both.

So no matter where your life is heading, Laser will help you live it.



Laser GLXi Hatch Shown in Gold Dust with optional alloy wheels and rear spoiler.

Is it the way it looks after you?

It's surprising how much more fun a car can be to drive when you know safety has been taken seriously.

Is it the built-in safety?

Laser's triple H safety cell increases body rigidity. This minimises distortion in side impacts, and improves driving

dynamics. An advanced energy absorption system increases your protection in front impacts. The key interior features are designed to absorb energy. The front seatbelts adjust for shoulder height. Not just for comfort, they are also designed to help prevent sliding under the seat-

belts in sudden stops. Advanced steering and suspension systems mean sharper handling response, making Laser so agile and enjoyable to drive.

Is it vehicle security?

Laser is fitted with an engine immobiliser. Any attempt to start your Laser with a key other than your own will result in the fuel and ignition systems shutting down.

Laser is also fitted with central locking as standard.

So now you know all that, you can, reassuringly, forget it.

Just get behind the wheel and have fun.

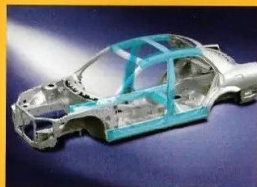


A driver's airbag is standard on all Lasers.

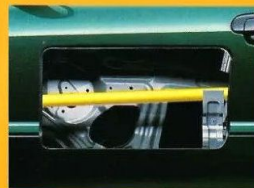


For its overall size, the Laser sedan has a long wheelbase (the distance between front and rear wheels). This works to provide more ride comfort and stability on the road.

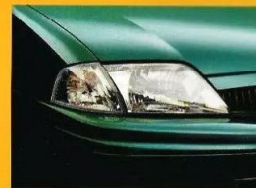
Laser LXi Sedan Shown in Aquamarine



Laser's triple H roof, side and floor reinforcement makes the car safer and more rigid. It also means it's quieter.



Improved door intrusion beams protect you from the sides. And front disc brakes stop you comfortably.



A new type of high-gloss paint resists stone-chipping. Also, over 85% of materials used have been designed for future recycling.

Is it the roomy interior?



Enjoy your own private climate at the touch of a button.

The secret of small-car design, of course, is to make the inside "bigger than the outside". As a pioneer of the hatch, it's something Laser has perfected.

So there's no need to leave anyone behind. There's plenty of leg room, head room and shoulder room for five adults. And no need to leave anything behind. The rear seat splits 60/40 and folds flat for increased space.

All seats give the support and comfort of high backs. And the driver's seat also adjusts for height, which, combined with the tilt-adjustable steering wheel, offers you not just greater comfort, but greater control.

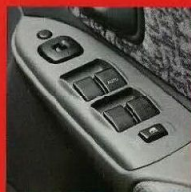
And, finally, we've even made room for a driver's airbag, central locking, air-conditioning and power steering. All as standard.



Laser GLXi



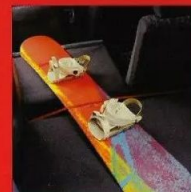
It's big inside. And with engine, exhaust and suspension refinements, it's also quiet inside.



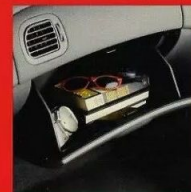
Power windows, power mirrors, remote central locking and reading lamps are standard on GLXi and an option on LXi.



Laser thinks of everything, even dual cup holders. Cappuccino to go.



Carrying capability and flexibility: 60/40 split-fold rear seats make Laser very versatile.



A big glove box adds to the storage.

Is it the power, or is it the economy?

You might think you can't have both. But in Laser, you can.

Laser's high-tech 1.6 and 1.8-litre engines are fuel-injected and have 16 valves and double overhead camshafts. What all this means is they love to be driven and you'll love driving them. They're quiet, spirited and very responsive.

But you don't pay for all this fun performance at the petrol pump. Laser's outstanding efficiency drives consumption down to as little as six litres per 100 kilometres*.

Depending on how you like your fun, choose the five-speed manual or the optional four-speed automatic.

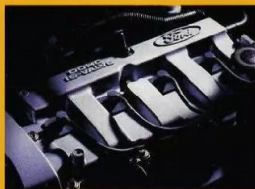
Finally, Laser's long heritage holds another important benefit: the evolution of its chassis design over time.

We won't bore you with all the technical reasons as to why it rides, handles, steers and brakes so well. It's something you will feel and appreciate every time you drive your Laser.

*Figures based on AS2877 highway cycle tests for LXi manual. Actual fuel consumption will depend on many factors, including your driving habits, the prevailing conditions and your vehicle's equipment, condition and use.



Laser GLXi Hatch Shown in Gold Dust with optional alloy wheels.



Laser's heart. Dynamic high-tech engines that are big on performance, not petrol.



Evolution at work. Laser's suspension combines comfortable ride with sharp handling.



5-speed manual, if you enjoy shifting yourself.



Or let the optional 4-speed automatic do it for you. Light and spory to drive.

Is it the ownership experience?

Fordcare.

Fordcare is a whole range of programs, products and services designed to make Ford owners the most satisfied motor vehicle owners in Australia. The well-being of your Ford is supported by these warranties and services:

New Vehicle Warranty.*

Covers your Ford against defects in factory materials or workmanship for the first 3 years or 100,000 km – whichever occurs first. When fitted at or prior to the time of vehicle delivery, Ford Approved Accessories are also covered by the Ford 3 Year/100,000 km 'Bumper to Bumper' Warranty.

Five Year Perforation Corrosion Warranty.*

Covers the original vehicle's body against perforation corrosion for the first five years of its life.

Lifelong Panel Warranty.*

Covers replacement outer body panels against perforation corrosion for the life of the vehicle.

Ford Customer Assistance Centre.

We're always happy to hear from you and you will find us responsive to your needs. Customer Assistance Centre – telephone 1800 333 306 (TOLL FREE), in Melbourne telephone 9359 7023.

Ford Credit Financial Services.

Ford Leasing and Red Carpet Options are available to approved applicants of Ford Credit Australia Limited. Enquire at your Authorised Ford Dealer.

Fleet Communication Centre.

Our Fleet Communication Centre is available to assist fleet customers with information on Ford products and services. Call 1800 673 207.

Further information on these warranties and services may be obtained from your Authorised Ford Dealer. Visit us on the Internet at <http://www.ford.com.au>

This brochure is designed to provide you with a general introduction to the Ford Products (including available optional equipment) referred to, and should be read in conjunction with the latest specification sheet. Because of changes in conditions and circumstances Ford* reserves the right, subject to all applicable laws, at any time, at its discretion, and without notice, to discontinue or change the features, designs, materials, colours and other specifications and the prices of their products, and to either permanently or temporarily withdraw any such products from the market without incurring any liability to any prospective purchaser or purchaser. The latest specification sheet should be referred to for information on the availability, ordering and use of optional equipment. Always consult an Authorised Ford Dealer for the latest information with respect to features, specifications, prices, optional equipment and availability before deciding to place an order. *FORD MOTOR COMPANY OF AUSTRALIA LIMITED. (A.C.N. 004 116 223) Registered Office: 1735 Sydney Road, Campbellfield, Victoria 3061, Australia. #Conditions and exclusions apply. See your Authorised Ford Dealer for details. Printed April 2000. FCL 8003

experiences

Ford KN Laser LXi & GLXi - Hatch & Sedan

MECHANICAL

- 1.8 litre DOHC EFI 4 cylinder 16 valve engine
- 1.8 litre DOHC EFI 4 cylinder 16 valve engine
- 5 speed manual transmission
- 4 speed automatic
- 4 wheel independent suspension
- Front and rear stabiliser bars
- Ventilated front disc brakes
- Rear drum brakes
- Power steering
- Distributorless ignition

EXTERIOR

- 14" x 5.5" steel wheels with full wheel covers
- 175/65 R14 tyres
- 185/65 R14 tyres
- Body coloured front and rear bumpers
- Mechanical remote exterior mirrors
- Black door handles
- Colour keyed door handles
- Colour keyed bodyside protection mouldings
- Black front mudflaps
- Black rear mudflaps
- Tinted laminated front windscreen
- Black rear and rear glass
- 2 speed front wipers with variable intermittent feature
- Chip resistant sill panel
- Rain deflecting exterior mirror housing
- Engine decal
- Rear wash wiper (Hatch only)

INTERIOR

- Air conditioning
- Driver airbag
- Tilt adjustable steering column
- Remote boot release (Sedan only)
- Remote fuel filler door release

FEATURES

INTERIOR (Continued)

- Driver's seat tilt and height adjustment
- Height adjustable front seat head restraints
- Integrated rear seat head restraint (Sedan only)
- Separate height adjustable Sport rear seat head restraints (Hatch only)
- 60/40 split fold down rear seat adjustable pivot point
- "Carouse!" velour seat trim
- "Inca" velour seat trim
- Moulded door trims with cloth insert
- Moulded cloth headlining
- Moulded passenger and luggage compartment floor
- Prismatic day/night interior rear view mirror
- Passenger's sunvisor with vanity mirror
- Driver's sunvisor with ticket holder
- Centre console with lid
- Lockable glove box
- Passenger trunk/tray
- Front door map pockets
- Rear door map pockets (Hatch only)
- Dual cup holder
- Front and rear ashtrays
- Ignition lock illumination
- Interior lamp
- Boot lamp
- Cigarette lighter
- Adjustable instrument panel illumination
- Gauges: Speedometer, tachometer, electronic odometer/tripmeter, fuel, engine temperature

FEATURES

INTERIOR (Continued)

- Warning lights: Park brake on, turn signal/hazard, high beam seat belt, door ajar, rear window demist, low fuel oil pressure, alternator, air bag
- Warning tones: Headlights left on, key in ignition
- Rear windscreen demister
- Side window demister vents
- AM/FM stereo radio and auto reverse cassette player with 4 speakers, CD compatible controls and integrated clock
- Engine immobiliser with smart key
- Rear tie-downs (Hatch only)
- Rear hatch grab handle (Hatch only)
- Double fold rear seats (Hatch only)
- Side impact bars and rear door catcher pins
- Power door locks
- Power Pack

Comprises:

- Power windows
- Driver window auto up and safety reverse
- Driver keyless entry
- Remote keyless entry
- Power exterior mirrors
- Colour keyed exterior mirror housings
- Illuminated entry
- Map reading spot lamps

ACCESSORIES

- Headlamp guards
- Bonnet protector
- Weatherstrips
- Carpet mats
- Tow bar

• = Standard

OPT = Optional at extra cost

Laser Trims





Live it.