

# 2004 INTREPID

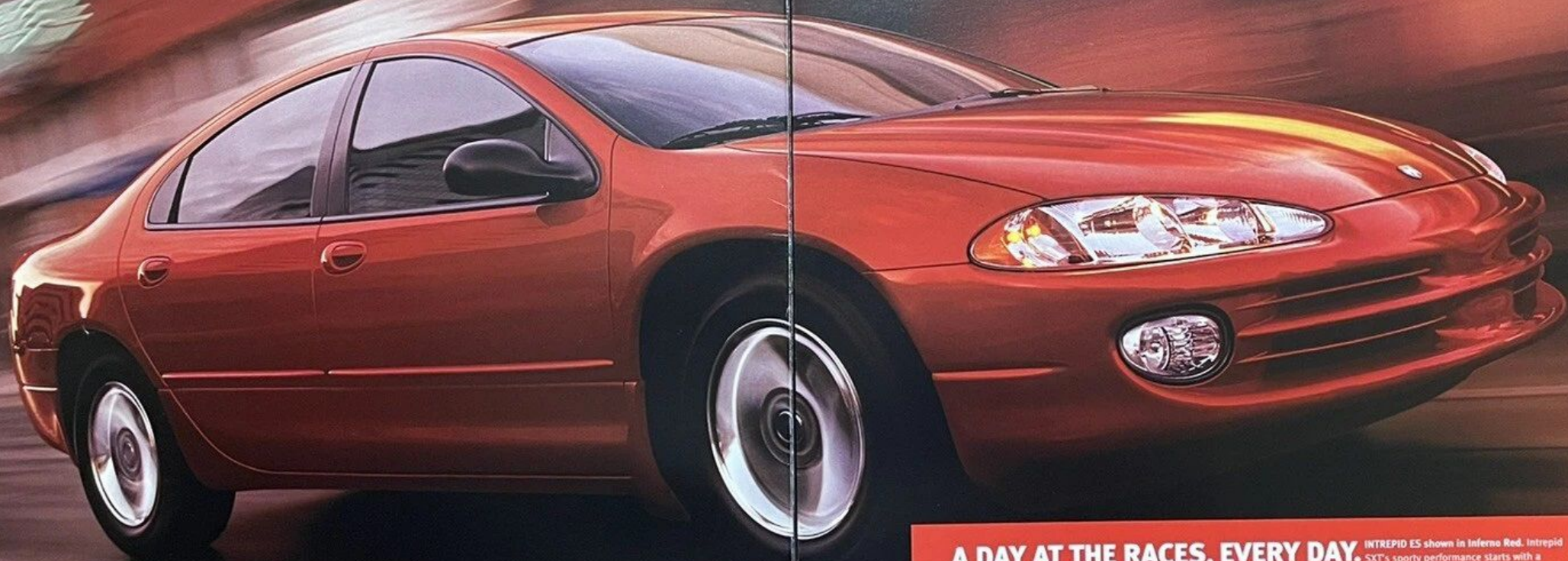


GRAB LIFE BY THE HORNS



DODGE





**A DAY AT THE RACES, EVERY DAY.** INTREPID ES shown in Inferno Red. Intrepid SXT's sporty performance starts with a 3.5-liter High Output 24-valve V6 engine that cranks out 250 horsepower @ 6,400 rpm. An easy-handling sport touring suspension makes the ride quiet, tight, and completely in your control. Get more performance details at [dodge.com/intrepid](http://dodge.com/intrepid)





## TIME YOUR COMMUTE TO WITHIN A TENTH OF A SECOND.

INTREPID ES shown in Dark Slate Gray leather. Best-in-class rear leg room is just the start.\* Intrepid's combination of smart looks, super price and huge interior space makes it a superior sedan for families. Learn more about all the features — like available automatic climate control — that make up this extraordinary Dodge sedan at [dodge.com/intrepid](http://dodge.com/intrepid)

\*Based on Automotive News 2003 mid-range standard class.



## INTREPID SE

ALL INTREPID MODELS INCLUDE THESE FEATURES:

- 2.7L V6 engine with 200 hp @ 5,800 rpm
- 4-speed automatic transmission
- Power locks, windows and mirrors
- Next Generation driver and front-passenger air bags\*
- Child Seat Anchor System (LATCH)
- Inside emergency trunk lid release
- 3-point lap and shoulder belts at all seating positions
- Brake-Park Interlock
- Battery-Saver
- 16" wheels and tires

## INTREPID SXT

INCLUDES THE STANDARD EQUIPMENT OF THE PREVIOUS TRIM LEVEL EXCEPT WHERE ADDITIONS ARE NOTED:

- 3.5L High Output V6 engine with 250 hp @ 6,400 rpm
- 8-way power driver's seat with manual lumbar support
- 60/40 split-folding rear seatback
- Deck lid spoiler†
- AM/FM compact disc with changer controls and 120-watt amplifier and 6 speakers
- Leather-wrapped steering wheel and shift knob
- Fog lamps
- 16" chrome clad wheels

## INTREPID ES

INCLUDES THE STANDARD EQUIPMENT OF THE PREVIOUS TRIM LEVEL EXCEPT WHERE ADDITIONS ARE NOTED:

- 3.5L V6 engine with 232 hp @ 6,200 rpm
- Leather-trimmed interior seating
- Overhead console with trip computer and HomeLink® Universal Transceiver
- Automatic temperature control
- Security alarm
- Auto day/night mirror
- Remote keyless illuminated entry
- 16" aluminum wheels
- 4-wheel disc ABS with traction control

## INTREPID OPTIONS

APPLIES TO ALL TRIM LEVELS UNLESS OTHERWISE NOTED:

- Supplemental seat-mounted side air bags\*
- Power sunroof
- 4-wheel disc ABS
- 4-wheel disc ABS with traction control (ES)
- AM/FM cassette and compact disc with changer controls and 120-watt amplifier with 6 speakers (SE)
- AM/FM cassette with in-dash 6-disc CD, 240-watt amplifier and Infinity™ sound system with 7 speakers (SXT, ES)
- Full-size spare tire
- Full-size spare with matching wheel (SXT, ES)

## WHEELS



16" APEX WHEEL COVER  
Standard on Intrepid SE  
(C Package)



16" MOMENTUM MACHINED  
ALUMINUM WHEEL  
Standard on Intrepid SE  
(D Package) and ES

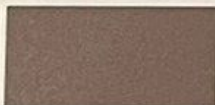


16" MOMENTUM CHROME  
ALUMINUM WHEEL  
Standard on SXT, optional on  
Intrepid ES

## INTERIOR COLORS & FABRICS



ESSEX CLOTH  
Shown in Taupe, also available in  
Dk. Slate Gray and Sandstone —  
Standard on SE and SXT



ROYALE LEATHER  
Shown in Sandstone, also available  
in Dk. Slate Gray and Taupe —  
Standard on ES

CHOOSE THE FEATURES  
YOU NEED, BUILD THE  
INTREPID YOU WANT WITH  
PRICE AND EQUIPMENT AT  
[dodge.com/intrepid](http://dodge.com/intrepid)



### Dodge 7/70 Limited Warranty

Your Dodge dealer is behind you for seven years or 70,000 miles protecting the hardest-working parts of your Dodge vehicle — the engine and transaxle. This warranty is transferable to the subsequent owners of your Intrepid. Ask your dealer for a copy.



Make your Dodge Intrepid the perfect fit for your life with dealer-installed parts and accessories from Mopar.



Enjoy exclusive benefits and VIP opportunities available only to Dodge owners! Join Team Dodge today — call 1-866-TEAM-DODGE (1-866-832-6363).

### CHRYSLER FINANCIAL

Chrysler Financial, a member of the DaimlerChrysler Services Group, offers flexible payment plans and financing products to qualified buyers. Ask your Dodge dealer to help you arrange a Chrysler Financial financing or leasing plan that meets your driving needs and your lifestyle. To learn more, visit [chryslerfinancial.com](http://chryslerfinancial.com). Once you're there, you can use our payment estimator, determine which vehicle fits your budget, and apply for pre-approval.



**BUSINESS LINK** If you own or manage a small fleet of vehicles, you may qualify for the unique benefits of this program.




\*Always use seat belts. Children 12 and under should always be in a backseat correctly using an infant or child restraint system.

†Only on SXT model. †Not available on SXT.

About this catalog: Since the time of printing, some of the information you'll find in this catalog may have been updated. Ask your dealer for details. Some of the equipment shown or described throughout this catalog is available at extra cost. Specifications, descriptions, illustrative materials, and all competitive comparisons contained herein are as accurate as known at the time this publication was approved for printing. DaimlerChrysler Corporation reserves the right to discontinue models at any time or change specifications without notice or without incurring obligation. All options are required in combination with other options. For the price of the model with the equipment you desire, or verification of specifications contained here, see your Dodge dealer. Dodge and Mopar are registered trademarks of DaimlerChrysler Corporation. HomeLink is a registered trademark owned by Johnson Controls, Inc. Infinity is a trademark of Harman International Industries, Inc.

Some of the equipment shown or described throughout this catalog is available at extra cost. Specifications, descriptions, illustrative materials, and all competitive comparisons contained herein are as accurate as known at the time this publication was approved for printing. DaimlerChrysler Corporation reserves the right to discontinue models at any time or change specifications without notice or without incurring obligation. All options are required in combination with other options. For the price of the model with the equipment you desire, or verification of specifications contained here, see your Dodge dealer. Dodge and Mopar are registered trademarks of DaimlerChrysler Corporation.





**dodge.com**

**800-4ADODGE**

Form no. 74-383-2422 8/03 (60M) Litho in USA