

Fiesta





Fiesta XR4 shown in Frozen White with optional overhead stripes.



Fiesta XR4 shown in Frozen White with optional overhead stripes.



Fiesta XR4.

The sexy Ford Fiesta range, including the German engineered and built Fiesta XR4, is sure to turn heads. From the slick, sexy body to the zippy engine, the German passion for quality and detail resonates throughout every aspect of the Fiesta XR4. For starters, the sporty 3 door hatch flaunts its sexy curves with optional overhead stripes. A stylish spoiler, 17" alloy wheels[^] and slick body kit enhance the Fiesta XR4's looks even further. Plus a contemporary fog lamp design enhances the hatch's passionate character. Under the bonnet, the punchy 2.0L Duratec 16V 4 cylinder engine delivers 110kW of power and 190Nm of torque. Power is transferred via a seamless 5-speed manual transmission for an effortless drive. A stiffer suspension helps deliver sportier performance and handling. The German attention to safety is also evident. The Anti-lock Braking System (ABS) provides superb stopping power and exceptional braking. Dynamic Stability Control* plus Traction Control and Emergency Brake Assist help ensure you reach your destination safely. And getting there is pure joy when you're embraced by Fiesta XR4's partial leather trim sports seats. You'll also discover a unique, leather wrapped steering wheel, sports leather gearshift knob and a crystal clear 6-disc in-dash CD system. How sexy is that?

[^]Set of four. *Dynamic Stability Control is also known as Electronic Stability Control (ESC).



Fiesta Zetec 5 door shown in Moondust Silver.



Fiesta Ghia shown in Moondust Silver.

Sexy European style.

One look at the German engineered Ford Fiesta and Ford Fiesta XR4 and you'll agree, they are real eye catchers. Clean lines. Elegant bodies. Sexy front and rear styling. And curves in all the right places. The elegant body shapes and fresh, clean styling are unmistakably European. The Fiesta, with its sporty front grille design, athletic low stance and wide wheel track, embodies a passion for action. A passion you'll come to realise the moment you get behind the wheel. And as you would expect from a German built Ford, the attention to detail is meticulous. From the stylish, slick front headlamps to the sharp looking rear tail lamps, the level of craftsmanship exceeds expectations. The same level of detail resonates throughout the Fiesta XR4. The sports-inspired hatch is engineered to produce extra adrenalin. And it's obvious from the optional overhead stripes flowing over the top and the sexy aerodynamic rear spoiler. Inside, you'll be indulged with style, practicality and comfort. The driving environment is designed to give a sporty yet very sexy look. The Fiesta and Fiesta XR4 definitely turn heads. It's what you'd expect from the sexy German engineered Ford Fiesta range.



Fiesta Zetec 3 door shown in Moondust Silver.

Passionate driving.

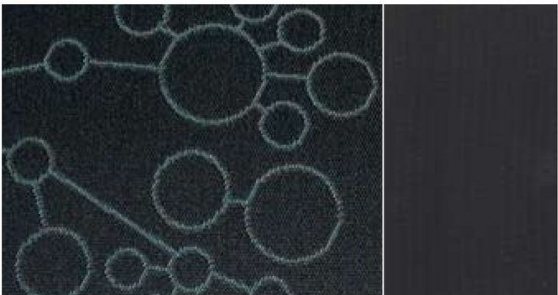
Engineered and built in Germany, every aspect of the Ford Fiesta has been designed to build on its award winning history. Slip behind the wheel and there's no denying it. Fiesta is truly sexy, slick and sporty. The 'torquey' 1.6L Duratec 16V engine delivers super responsive acceleration through the 5-speed manual or optional 4-speed automatic transmission. When it comes to control, hydraulic power-assist steering provides precise handling and razor-sharp manoeuvrability. And an ultra-stiff chassis makes for greater stability and magnet-like roadholding through corners. The sporty passion is further enhanced in the Fiesta Zetec with a sports suspension that delivers firmer, more precise steering. This results in a sportier feel to both the steering and handling. And packing even more punch and performance is the Ford Fiesta XR4 with a powerful 2.0L Duratec 16V engine. So prepare yourself. You're about to go on a drive that's guaranteed to excite.



Fiesta XR4 shown with Blue Diamond interior and blue instrument panel.

Interior trims.

Fiesta LX



Tahitian Pearl with Ebony bolster.

Fiesta Ghia



Rhodium Wave with Ebony bolster.

Fiesta Zetec



Moonlight Sapphire with Ebony bolster.

Fiesta Zetec



Moonlight Ruby with Ebony bolster.

Fiesta XR4



Blue Diamond with Ebony leather bolster.

Fiesta XR4



Hot Copper with Ebony leather bolster.



Fiesta Ghia shown with Rhodium Wave interior.

Comfort and quality.

The German engineered Ford Fiesta and Ford Fiesta XR4's sexy, sporty styling continues throughout the inviting interior. To create an appealing ambience, Fiesta's instrument cluster is designed with bright, easy to read gauges. The instrument panel is enhanced with a contrasting shade of colour. And Fiesta's range of seat fabric designs and colours enhance the mood even further. A soft-feel dashboard, ergonomically located controls and a convenient input facility for an iPod® or MP3 player* will surely tempt you to take the long way home. Take a ride in the slick Fiesta XR4 and you'll be further indulged. Run your fingers across the smooth, leather wrapped steering wheel and feel the quality. The 6-disc in-dash CD sound system is as appealing to the eyes as it is to the ears. And the partial leather trim sports seats will make you want to stay in the driver's seat long after the journey is over. Once again, the German attention to detail prevails.

*Standard on manual transmission vehicles. Available as an accessory on automatic transmission vehicles. Input cable sold separately. iPod® is a trademark of Apple Computer Inc., registered in the United States and other countries.



Fiesta Ghia shown in Moondust Silver.

Safety.



There is no doubt the Ford Fiesta and Ford Fiesta XR4 take the German attention to detail, quality and reliability very seriously. Especially when it comes to safety. Take the Intelligent Safety System (ISS) for instance. It adjusts the level of protection according to the severity of the collision. During an accident it automatically decides how to best deploy safety features such as driver and front passenger airbags. Choose the Fiesta XR4 and depending on the severity of the accident, front and side curtain airbags are activated. Front seat belts feature pretensioners to reduce slack. The body structure is designed with exceptional stiffness creating a rigid cell. And ABS with Electronic Brakeforce Distribution (EBD)* helps ensure straight stopping even in the harshest conditions. An anti-theft engine immobilising system ensures your vehicle takes care of itself too. There are many rational reasons why Fiesta and Fiesta XR4 appeal, but it's what they will do to your heart that will really persuade you.

*Optional on LX manual transmission. Standard on all other models.



Fiesta XR4 shown in Frozen White with optional overhead stripes.

Fiesta vehicle range.



Fiesta LX

With a choice of 3 or 5 doors, the Fiesta LX features the sporty 1.6L Duratec 16V engine, air-conditioning, 15" wheels, driver and front passenger airbags, front power windows and mirrors, remote central locking, power steering, leather wrapped steering wheel and iPod® or MP3 facility.*



Fiesta Zetec

Performance oriented, the 3 or 5 door Fiesta Zetec comes standard with sports suspension, ABS with EBD, 16" alloys,^ front fog lamps, sports trim, satin aluminium finish gear knob^ and steering column mounted audio controls in addition to all the features of the Fiesta LX.



Fiesta Ghia

A luxurious small car, the 5 door Fiesta Ghia features a 6-disc in-dash CD player, leather wrapped steering wheel with satin aluminium spoke, map lights, chrome grille and plush velour trim in addition to all the features of the Zetec! Safety features include optional side thorax and side curtain airbags.

Fiesta XR4

The sports-inspired Fiesta XR4 3 door hatch features the 2.0L Duratec 16V engine, seamless 5-speed manual transmission, enhanced sports suspension, DSC,^ side thorax and side curtain airbags, trip computer, 17" alloy wheels,^ partial leather trim sports seats, and much more in addition to all the features of the Zetec.

*Standard on manual transmission vehicles. Available as an accessory on automatic transmission vehicles. Input cable sold separately. iPod® is a trademark of Apple Computer Inc., registered in the United States and other countries. ^Set of four.
^Manual transmission only. ^Sports suspension only available on Fiesta Zetec and Fiesta XR4 models. ^Dynamic Stability Control is also known as Electronic Stability Control (ESC).

Exterior colours.



Colorado Red¹.



Frozen White¹.



Verdigris^{1,2}.



Panther Black³.



Moondust Silver³.



Ocean³.



Tango³.



Sea Grey³.



Viola¹.



Performance Blue⁴.

1. Fiesta Zetec 5 door shown for illustrative purposes. 2. Verdigris ends March 2008. 3. Fiesta Ghia shown for illustrative purposes. 4. Fiesta XR4 shown for illustrative purposes.



Frozen White with Blue overhead stripes⁵.



Moondust Silver with Blue overhead stripes⁵.



Colorado Red with White overhead stripes⁵.



Performance Blue with White overhead stripes⁵.



Sea Grey with White overhead stripes⁵.



Panther Black with Silver overhead stripes⁵.

EXTERIOR COLOUR AND INTERIOR TRIM COMBINATIONS				
	LX	Zetec	Ghia	XR4
Exterior colours				
Colorado Red	Tahitian Pearl with Ebony	Moonlight Ruby with Ebony	Rhodium Wave with Ebony	Hot Copper with Ebony
Frozen White	Tahitian Pearl with Ebony	Moonlight Ruby with Ebony	Rhodium Wave with Ebony	Blue Diamond with Ebony ⁶ .
Verdigris ⁷	Tahitian Pearl with Ebony	Moonlight Sapphire with Ebony	Rhodium Wave with Ebony	N/A
Panther Black ⁷	Tahitian Pearl with Ebony	Moonlight Ruby with Ebony	Rhodium Wave with Ebony	Hot Copper with Ebony
Moondust Silver ⁷	Tahitian Pearl with Ebony	Moonlight Ruby with Ebony	Rhodium Wave with Ebony	Hot Copper with Ebony
Ocean ⁷	Tahitian Pearl with Ebony	Moonlight Sapphire with Ebony	Rhodium Wave with Ebony	N/A
Tango ⁷	Tahitian Pearl with Ebony	Moonlight Ruby with Ebony	Rhodium Wave with Ebony	N/A
Sea Grey ⁷	Tahitian Pearl with Ebony	Moonlight Sapphire with Ebony	Rhodium Wave with Ebony	Hot Copper with Ebony
Viola ⁷	Tahitian Pearl with Ebony	Moonlight Sapphire with Ebony	Rhodium Wave with Ebony	N/A
Performance Blue ⁷	N/A	N/A	N/A	Blue Diamond with Ebony ⁶ .

⁵. Optional overhead stripe colour dictated by exterior paint colour selected on Fiesta XR4. Only combinations represented in this brochure are available. ⁶. Vehicles specified with Blue Diamond interior trim feature a blue instrument panel, all other colours feature an Ebony instrument panel. ⁷. Prestige colour is an option that incurs an additional charge.



Fiesta Zetec 5 door shown in Moondust Silver.



Ford Fiesta XR4's 2.0L Duratec 16V engine with 110kW of power and 190Nm of torque, so even city driving can be loads of fun.

German engineering.

The German engineers have devoted their complete attention to every detail of the Ford Fiesta and Ford Fiesta XR4. Just one glance at the sexy, sporty bodies and it's obvious. But the sex appeal isn't just for show. Underneath beat the hearts of two ultra-responsive engines. Powerful. Seamless. Refined. The Germanic obsession with quality will take hold of you the moment you start the engine. Both the Fiesta and Fiesta XR4 are designed to appeal to even the most passionate of drivers. Sporty steering and handling means you'll be in for loads of fun. Take one for a drive and you'll experience pure joy. It's all thanks to the specially calibrated engines that deliver outstanding torque and zippy performance at both the lower speeds used in the city, and higher speeds used on the open road. But don't take our word for it. Take one for a drive yourself. There'll be no doubt in your mind that the Fiesta and Fiesta XR4 appeal to the heart.

Specifications and options

MODEL	LX/Zetec/Ghia			XR4
Engine	Duratec 1.6 Litre 4 cylinder DOHC 16V			Duratec 2.0 Litre 4 cylinder DOHC 16V
Max power output ISO ¹ .	74kW @ 6000rpm			110kW @ 6000rpm
Max torque ISO ¹ .	146Nm @ 4000rpm			190Nm @ 4500rpm
Engine size (cc)	1596			1999
Bore and stroke	79.0 x 81.4mm			87.5 x 83.1mm
Fuel system	Sequential EFI			Sequential EFI
Ignition	Electronic distributorless ignition with knock sensor			Electronic distributorless ignition with knock sensor
Cylinder head	Aluminium alloy			Aluminium alloy
Engine block	Aluminium alloy			Aluminium alloy
Compression ratio	11.0:1			10.8:1
GEAR RATIOS	Manual (LX & Ghia)	Manual (Zetec)	Auto	Manual (only)
1st	3.15	3.58	2.88	3.58
2nd	1.93	2.04	1.57	2.04
3rd	1.28	1.41	1.00	1.41
4th	0.95	1.11	0.70	1.11
5th	0.76	0.88	–	0.88
Reverse	3.62	3.62	2.30	3.62
Final drive ratio	4.25	4.06	4.38	3.82
FUEL				
Fuel ² .	91-98RON	91-98RON	91-98RON	95-98RON
Consumption - NEDC combined (Cold) L/100km ³ .	6.6	6.8	7.5	7.4
CO ₂ emissions (g/km) ³ .	156	159	177	177
Fuel tank capacity (litres)	45	45	45	45
SUSPENSION	LX/Zetec/Ghia			XR4
Front	Independent MacPherson struts with offset coil spring/damper units and lower L-arms with optimised bushes mounted on separate cross-member with stabiliser bar.			Independent MacPherson struts with offset coil spring/ revised larger dampers and lower L-arms with optimised bushes mounted on separate cross-member with stabiliser bar and spring tuning.
Rear	Twist-beam with low package height coil springs and separate monotube dampers. Dual-path body mounts.			Twist beam with low package height coil springs and separate monotube dampers. Dual-path body mounts.
BRAKES				
Front	258mm diameter by 22mm thick ventilated disc brakes			278mm diameter by 22mm thick ventilated disc brakes
Rear	203mm diameter by 36mm wide drum brakes			253mm diameter by 10mm wide disc brakes
KERB WEIGHT (kg)	LX	Zetec	Ghia	XR4
Manual 3 Door	1056	1064	–	1090
5 Door	1062	1070	1074	–
Auto 3 Door	1081	1089	–	–
5 Door	1087	1095	1099	–
LUGGAGE CAPACITY (L)	3 Door hatch		5 Door hatch	3 Door hatch
Seats upright	261		284	261
EXTERIOR DIMENSIONS (mm)				
Overall length	3924		3924	3924
Overall width ⁴ .	1685		1685	1685
Overall height	1468		1464	1468
Wheelbase	2486		2486	2486
Front track	1464		1450	1464
Rear track	1444		1444	1444
INTERIOR DIMENSIONS (mm)				
Front headroom	995		999	995
Front legroom	1058		1058	1058
Front shoulder room	1344		1355	1344
Rear headroom	950		959	950
Rear legroom	885		885	885
Rear shoulder room	1355		1300	1355
MINIMUM TURNING CIRCLE (metres)				
Diameter kerb-to-kerb	9.8		9.8	11.4
Turns to lock	2.8		2.8	2.8

¹. All performance data measured using 95RON fuel. ². For optimum performance use fuel of 95RON or higher. ³. These figures are obtained from controlled tests conducted to Australian Design Rule 81/01, which requires the use of 95RON fuel, and are provided to assist you in comparing the fuel consumption and CO₂ emissions of Fiesta with other vehicles. The actual fuel consumption and CO₂ emissions you achieve will depend, however, on many factors including your driving habits, the prevailing conditions and your vehicle's equipment, condition and use.

⁴. Excludes exterior side mirrors.

PERFORMANCE	LX	Zetec	Ghia	XR4
Duratec 1.6L DOHC EFI 4 cylinder 16V engine 5-speed manual	S	S	S	–
Duratec 1.6L DOHC EFI 4 cylinder 16V engine 4-speed automatic	O	O	O	–
Duratec 2.0L DOHC 4 cylinder 16V engine 5-speed manual	–	–	–	S
RIDE AND HANDLING				
Front disc brakes (ventilated)	S	S	S	S
MacPherson strut and “L” arm, independent front suspension with stabiliser bar	S	S	S	S
Rear drum brakes	S	S	S	–
Rear disc brakes	–	–	–	S
Twist-beam rear suspension with coil springs	S	S	S	S
Sports suspension	–	S	–	–
Enhanced sports suspension	–	–	–	S
15" Steel wheels and full cover – 9 spoke with 195/50 R 15H tyres (set of 4)	S	–	–	–
15" 5 spoke alloy wheels with 195/50 R 15H tyres (set of 4)	–	–	S	–
16" 7 spoke alloy wheels with 195/45 R 16H tyres (set of 4)	A	S	A	–
17" 11 spoke alloy wheels with 205/40 R 17 tyres (set of 4)	–	–	–	S
14" Temporary spare – T125/80 R15 95M ⁵ .	S	S	S	S
INTERIOR				
Air-conditioning	S	S	S	S
Centre console with front cup holder and storage area	S	S	S	S
Digital clock in audio display	S	S	S	S
Driver and passenger vanity mirror (with flip up cover)	S	S	S	S
Front windscreen wipers – 2-speed with variable intermittent wipe	S	S	S	S
Front map lights	–	–	S	–
Interior light fade on/off	S	S	S	S
Instrument cluster – speedometer, tachometer, odometer, trip odometer, fuel level and engine temperature gauges	S	S	S	S
Leather wrapped gear knob with aluminium insert (manual only)	–	–	S	S
Black gear shift gaiter with silver rim ⁶ .	–	S	S	S
Leather wrapped steering wheel	S	S	–	–
Leather wrapped steering wheel with aluminium centre spoke	–	–	S	S
Fiesta XR4 scuff plates – alloy look	–	–	–	S
Luggage compartment illumination	S	S	S	S
Power remote adjustable/heated black external mirrors	S	–	–	–
Power remote adjustable/heated body colour external mirrors	–	S	S	S
Power front windows	S	S	S	S
Rear demister	S	S	S	S
Rear windscreen wiper with auto wipe feature	S	S	S	S
Remote central locking	S	S	S	S
Tilt adjustable steering column	S	S	S	S
Two-tone instrument panel	–	–	–	S ⁷ .

S – Standard. O – Options that can be ordered before a vehicle is manufactured. A – Accessories that can be added at any time.

⁵. If the spare wheel rim or tyre size differs from the other wheels fitted, the vehicle should be driven with caution and the standard wheel and tyre be re-fitted as soon as possible. ⁶. Available on manual transmission vehicles only. ⁷. Only when Frozen White or Performance Blue exterior colours are selected. Refer to Colours and Trims section for further information.

SEATING	LX	Zetec	Ghia	XR4
Driver's seat manual height adjust	S	S	S	S
Driver and passenger height adjustable head restraints	S	S	S	S
Front sports seats with partial leather trim	-	-	-	S
Folding 60/40 rear seats	S	S	S	S
Front seat back pockets	S	S	S	S
One piece rear cushion with flip fold	S	S	S	S
Rear passengers (3) height adjustable head restraints	S	S	S	S
Tip forward front seat backs – 3 door only	S	S	-	S
AUDIO				
Single slot CD AM/FM radio	S	S	-	-
6-Disc in-dash CD with AM/FM radio	-	-	S	S
Audio input facility for iPod®/MP3/CD or tape player ⁸ .	S	S	S	S
Remote audio controls mounted on steering column	-	S	S	S
EXTERIOR				
3 Door hatch	S	S	-	S
5 Door hatch	O	O	S	-
Black body side mouldings and exterior door handles	S	S	-	-
Black side mouldings and body colour exterior door handles	-	-	S	-
Body colour side mouldings and exterior door handles	-	-	-	S
Black radiator grille with black surround	S	S	-	-
Grey radiator grille	-	-	-	S
Black radiator grille with chrome surround	-	-	S	-
Body styling kit (includes front bumper, side skirts and rear bumper)	-	-	-	S
Front fog lamps	-	S	S	-
Front fog lamps with silver surround	-	-	-	S
Single rear fog lamp	S	S	S	S
Aerodynamic rear roof body coloured spoiler	-	-	-	S
Impact resistant body colour front and rear bumpers	S	S	S	S
Roof antenna	S	S	S	S
Tinted glass	S	S	S	S
SAFETY				
ABS and Electronic Brakeforce Distribution (EBD)	O ⁹ .	S	S	S
Emergency Brake Assist	-	-	-	S
Dynamic Stability Control (DSC) ¹⁰ . and Traction Control	-	-	-	S
Driver and front passenger airbag	S	S	S	S
Front seat belts: inertia reel with pretensioners (and height adjustment on 5 door models only)	S	S	S	S
Passive anti-theft system	S	S	S	S
Grade Control Logic (automatic transmission only)	S	S	S	-
Rear seat belts: 3 inertia reel, all lap and diagonal	S	S	S	S
Side curtain airbags and side thorax airbags	-	-	O ¹¹ .	S
Side impact door beams	S	S	S	S
Warning tones: headlamps left on, key in ignition and seatbelt	S	S	S	S
Warning lights: airbag, low brake fluid/handbrake failure, turn indicators, high beam, door ajar, low fuel, ignition and oil pressure	S	S	S	S

⁸. Standard on manual transmission vehicles. Available as an accessory on automatic transmission vehicles. Connection cable sold separately. iPod® is a trademark of Apple Computer Inc., registered in the United States and other countries. ⁹. Mandatory with LX automatic transmission.

¹⁰. Dynamic Stability Control is also known as Electronic Stability Control (ESC). ¹¹. When you option Safety Pack.

Personalise your Fiesta. The choice is yours.

You probably didn't think it was possible, but the German engineered Ford Fiesta can look even sexier thanks to a broad range of interior and exterior style accessories. There's a multitude of different ways to personalise your Fiesta. If you're a sporty type, perhaps you'd like one of the many add-on carriers for bikes, skis or snowboards. There's also a huge range of exterior protection v available to keep your Fiesta looking sexier for longer.



Spoiler. Maximise your Fiesta's sporty appearance with a spoiler designed to further enhance the vehicle's contours.



Scuff plate inserts. Enhance the look of your Fiesta with polished aluminium scuff plate inserts. Embossed with the 'Fiesta' logo.



16" 7 spoke alloy wheels. Designed in Europe and made from high grade alloy for superior strength, these alloy wheels will give your Fiesta a sportier edge.



Sports leather gear knob. Superbly crafted sports leather gear knob gives the interior of your Fiesta an even sportier look and feel. Available on manual transmission vehicles only.



Bike carrier.* Transporting your bike is easy with this fully lockable bike carrier. Securely harnesses your bike by the front forks and is made from premium alloy for superior strength and stability.



Boot liner† Durable rubber mat features a raised texture to help minimise movement of goods during transit. Easy to remove and clean.

*Attaches to Genuine Ford carry bars which are sold separately. †Boot liner and boot scuff guard cannot be fitted in conjunction with each other.



Reverse sensing system. The reverse sensing system uses warning tones to help make reversing and parking easier.



Cargo swing net. Keep your belongings in place. Easy to install and remove, it attaches to the sides of the cargo area to help prevent loose items moving around during transit.



Boot scuff guard! Designed to help protect your Fiesta's rear bumper and boot lip from scratches and scuffs when loading and unloading. Folds away neatly when not in use.

Ski/snowboard carrier.*



Make your Fiesta truly your own.

As you'd expect, all accessories are designed specifically for your Fiesta, so you know they'll fit exactly and provide optimum reliability. Sports options such as the 16" 7 spoke alloy wheels are always a stylish choice and safety features like the reverse sensing system will always be a welcome addition. However, if you can't decide when purchasing your vehicle, all these accessories are available at any time from your Ford Dealer. Find out more at ford.com.au or visit your Ford Dealer.

OPTIONS AND ACCESSORIES AVAILABILITY BY MODEL				
EXTERIOR STYLING	LX	Zetec	Ghia	XR4
16" 7 spoke alloy wheels ¹	A	S	A	-
Spoiler	A	A	A	-
Overhead stripes (available in Blue, White and Silver) ²	-	-	-	O/A
EXTERIOR PROTECTION				
Bonnet protector	A	A	A	A
Headlamp guards	A	A	A	A
Mudspats ³	A	A	A	-
Weathershields ⁴	A	A	A	A
Weathershields - slimline	A	A	A	A
INTERIOR STYLING				
Sports leather gear knob ⁵	A	A	A	-
Scuff plate inserts	A	A	A	-
INTERIOR COMFORTS AND STORAGE				
Boot liner ⁶	A	A	A	A
Boot scuff guard ⁶	A	A	A	A
Cargo swing net	A	A	A	A
Carpet mats	A	A	A	A
Dashmat	A	A	A	-
Personal organiser	A	A	A	A
Rubber floor mats ³	A	A	A	A
Smoker's pack	A	A	A	A
IN CAR ENTERTAINMENT AND ELECTRICAL				
Child activity organiser	A	A	A	A
iPod [®] /MP3 audio input ⁷	A	A	A	S
SAFETY AND SECURITY				
Reverse sensing system	A	A	A	-
TOWING AND CARRYING				
Carry bars	A	A	A	A
Bike carrier ⁸	A	A	A	A ⁹
Ski carrier ⁸	A	A	A	A
Ski/snowboard carrier ⁸	A	A	A	A
Towpack - standard 900kg ¹⁰	A	A	A	-

S - Standard, **O** - Options that can be ordered before a vehicle is manufactured, **A** - Accessories that can be added at any time.

1. Set of four. Wheels and tyres sold separately. **2.** Overhead stripe colour dictated by exterior paint colour selected. Refer to Colours and Trims section for more information. **3.** Front and rear sets sold separately. **4.** Left and right side sold separately. **5.** Available on manual transmission vehicles only. **6.** Genuine Ford boot liner and boot scuff guard cannot be fitted in conjunction with each other. **7.** Standard on manual transmission vehicles. Available as an accessory on automatic transmission vehicles. iPod[®], MP3 and connection cable not included. iPod[®] is a trademark of Apple Computer Inc., registered in the United States and other countries. **8.** Attaches to Genuine Ford carry bars (sold separately). **9.** Must be fitted with adjustment bracket. **10.** Subject to State and Territory regulations. Towpack includes towbar, towball and trailer wiring kit.

Making your ownership experience even more rewarding.

A great car is just the beginning. We support you with a wide range of services that aim to make you one of the most satisfied vehicle owners in Australia.

Insurance

Ford offers a full suite of insurance products; designed to make it easier to keep your Fiesta on the road. Along with traditional motor vehicle insurance, we also offer various loan and equity protection products to both private and business buyers.

Considering Finance?

Ford Credit provides a range of finance driven solutions for private, business and fleet customers; making it easier, and more affordable than you may expect, to drive a new Fiesta. Having financed more than one million vehicles in Australia since 1971, Ford Credit has the products and experience to meet your needs. For more information, ask at your authorised Ford Dealer or visit us at www.fordcredit.com.au

3 year/100,000km new car warranty.*

For three years or 100,000km, whichever comes first, your Ford is covered against any defects in factory materials or workmanship. This also applies to Genuine Ford Accessories you may have had fitted before you took delivery.

5 year warranty against perforation corrosion.*

It's reassuring to know that the original body of your gleaming new Ford is guaranteed against perforation corrosion for the first five years of its life. If perforation corrosion occurs, we'll fix it for free.

Want to contact us?

For answers to your questions, or help with any concern, contact our Customer Relationship Centre on 13 FORD (13 3673).

Running a fleet?

Our Ford Business Centre is available to assist fleet customers with information on Ford products and services. Call 1300 13 13 30.

Visit us on the web.

If you want more information on Ford or our entire product range, visit us on the Internet at ford.com.au



*Conditions and exclusions apply. See your authorised Ford Dealer for details.

This brochure is designed to provide you with a general introduction to the Ford Products (including available optional equipment) referred to, and should be read in conjunction with the latest specification sheet. Because of changes in conditions and circumstances Ford* reserves the right, subject to all applicable laws, at any time, at its discretion, and without notice, to discontinue or change the features, designs, materials, colours and other specifications and the prices of their products, and to either permanently or temporarily withdraw any such products from the market without incurring any liability to any prospective purchaser or purchasers. The latest specification sheet should be referred to for information on the availability, ordering and use of optional equipment. Always consult an authorised Ford Dealer for the latest information with respect to features, specifications, prices, optional equipment and availability before deciding to place an order. *FORD MOTOR COMPANY OF AUSTRALIA LIMITED. (A.B.N. 30 004 116 223) Registered Office: 1735 Sydney Road, Campbellfield, Victoria 3061, Australia. Printed August 2008.

FML4920eb



Fiesta Ghia shown in Moondust Silver.

