

A SOUVENIR OF YOUR VISIT TO THE FORD EXHIBITS



A SPECIAL MESSAGE TO COUNTRY VISITORS

On your return home, your local Ford Dealer will be glad to talk with you about any of the Ford-built products you have seen during your visit to the Show. He will detail for you any information you may require and advise you about purchase arrangements. Should you be interested in a tractor, he can arrange a working demonstration, on your own property, of the Fordson Major model best suited to your needs.

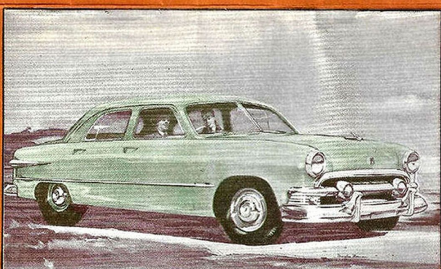


FORD MOTOR COMPANY OF AUSTRALIA PTY. LTD.

**Every Ford-built product
is good to look at — but, best of all,
is good to own**

Into each unit in the wide Ford range is built all of the features most desirable for the unit's particular purpose. These features — whether they concern the very latest advances in styling, comfort, thrifty operation or sheer capacity for hard work — come from Ford's vast research and engineering resources and from Ford's appreciation of what an owner needs for complete satisfaction. That is why "Most for your money means Ford"!

FORD BUILDS THE VALUE LEADERS IN CARS, UTILITIES, TRUCKS & TRACTORS



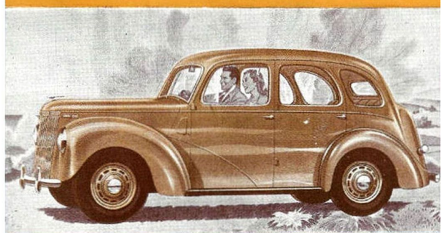
FORD CUSTOM SEDAN
Feature for Feature — Finer by Far.



FORD DE-LUXE COUPE UTILITY
Styled for a life of luxury — built for a life of hard work.



FORD V8 TRUCKS
Built stronger to last longer.



PREFECT 10 H.P. SEDAN
Top of its class — and Australia's lowest priced
10 h.p. 4 door sedan.



PREFECT COUPE UTILITY
Sturdy for business — and smart for leisure.



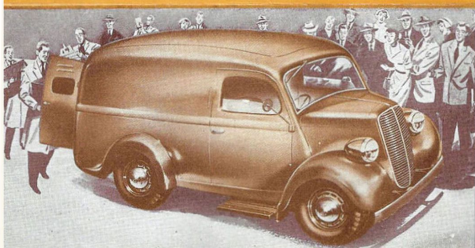
ANGLIA 10 H.P. SPORTS TOURER
The tailored Sports Tourer that lets you keep
a bank balance and a car.

**PLEASE
TURN
OVER**



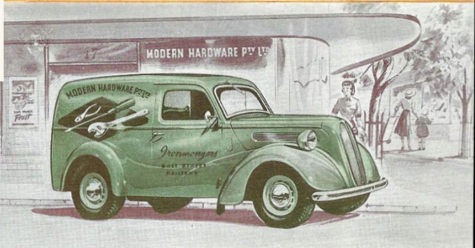
THAMES 30 CWT., 2 TON, 3 TON AND 4½ TON TRUCKS

V8 powered and Ford-engineered for enduring service



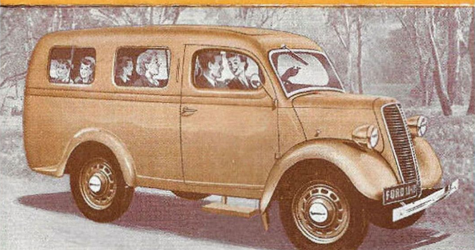
FORD TEN-TEN VAN

Best buy in load-space, price and upkeep.



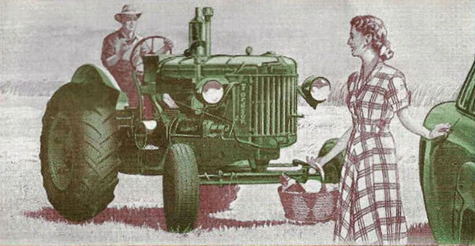
FORD TEN-FIVE VAN

Nippiest, thriftiest lightweight delivery on the road.



FORD ESTATE CAR

Seats seven in perfect comfort — and in 30 seconds becomes a 10 cwt. van.



FORDSON MAJOR TRACTORS

Fordson Major farms Australia with the most versatile range of tractors ever produced.



Fordson Major
Agricultural Model
Kerosene-Powered



Fordson Major
Agricultural Model
Diesel-Powered



Fordson Major
Row-Crop Model
Kerosene-Powered



Fordson Major
County Crawler
Kerosene or
Diesel-Powered



Fordson Major
Half Track
Kerosene or
Diesel-Powered

And Fordson Major's versatility is increased by a special range of "Crown" mounted implements and farm equipment specially designed for use with Fordson Major's Hydraulic Lift — Mounted 3-furrow 10 inch Plough, Rotary Hoe Cultivator, Master Saw Bench, Hydraulic Dozer, 2-Tine Rabbit Warren Ripper, Rigid-Tine and Spring Release Tine Cultivators.

Service by Ford factory-trained mechanics and genuine Ford parts are additional advantages of Ford ownership

At every Ford-Australia Branch, Service Schools are instructing mechanics from Ford Dealers in the latest Ford servicing methods. This specialised knowledge — and the use by Dealers of genuine Ford parts and Ford-approved equipment — mean availability throughout Australia of efficient and economical maintenance facilities.

