

*Smarter, safer,
money-saving
handling of
7cwt. loads*



FORD

10 H. P. — 7 CWT. VAN

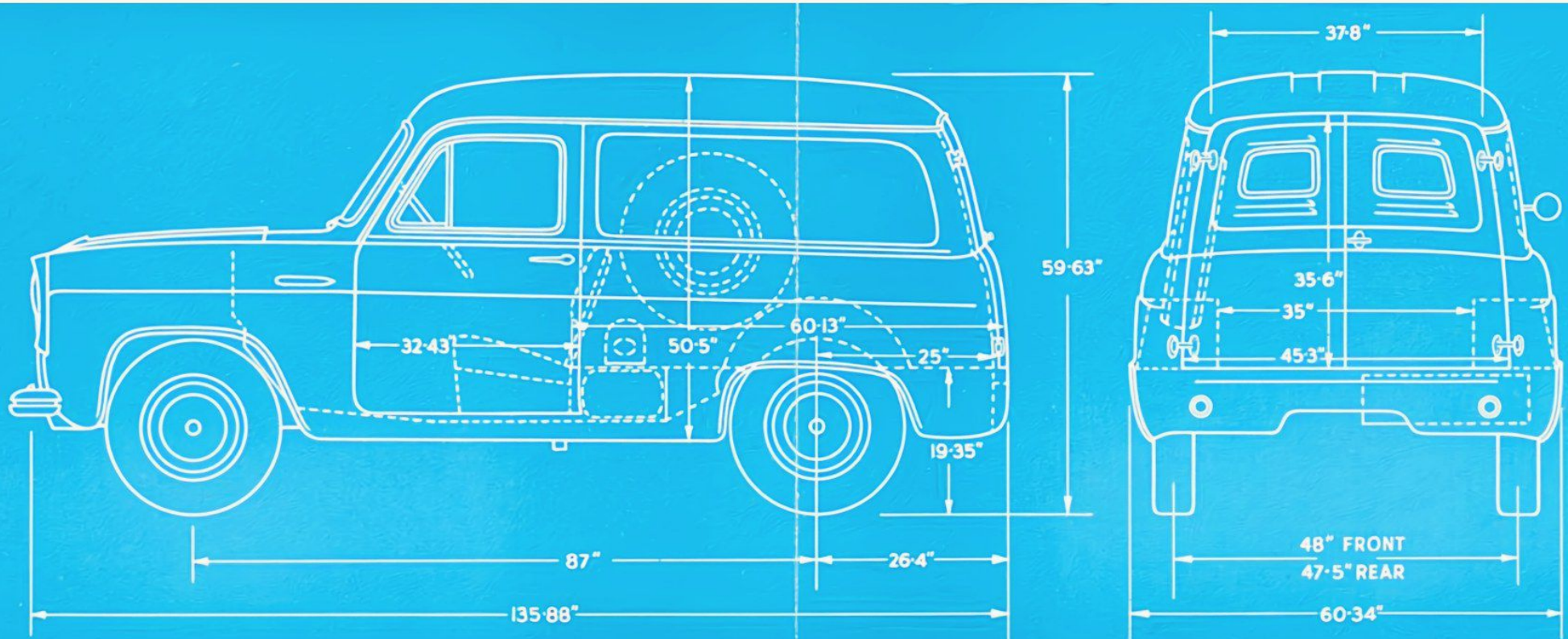
The versatile van for every 7 cwt. load that needs careful, fast and economical handling!

Completely new ! Never before has a 7 cwt. van combined so many features to add profits for your business and save costs on deliveries. The Ford 7 cwt. van is just right !

New all-better body design means you get maximum pay load, more convenience in load-handling . . . and the all-new suspension really protects even the most fragile of loads. And there's so much more prestige for your business too, with modern, smooth lines . . . good looks from **any** angle.

Driving is easier too, the engine, identical to that in the all new Anglia and Prefect, gives faster acceleration, easier cruising speeds, more "pep" when you need it . . . and all this for the very lowest consumption of petrol.

See the dimensions below, read the features inside, and you'll agree that, in this really modern van, Ford has provided new efficiency and economy for any business or person needing smart and safe transportation of 7 cwt. loads.

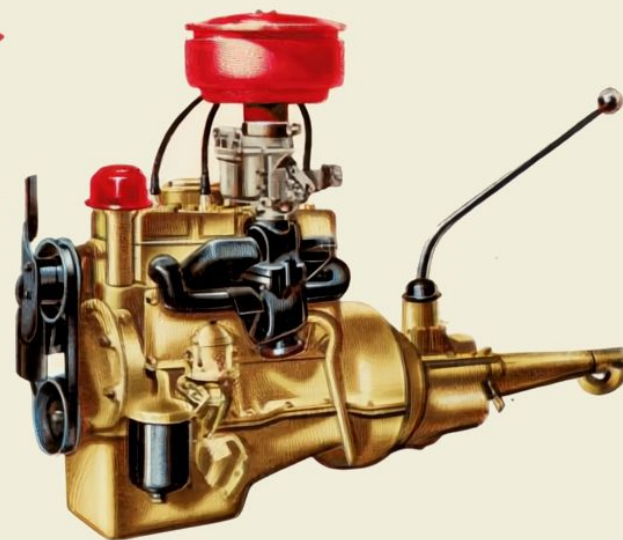


*In every advanced feature
it's designed for more profitable operation*

**POWER TO WEIGHT RATIO... MANOEUVRABILITY... ENGINEERING
IDEAL FOR CITY OR SUBURBAN DELIVERIES OR LONG DISTANCE RUNNING**

Power to weight ratio of 72 lbs. per B.H.P. when fully loaded means easy, faster performance with less engine effort and lower petrol consumption. And all excess weight is eliminated without detracting a fraction from the more rugged, tougher structure. For parking and manoeuvrability the small front-to-back dimensions (only 11' 4") and steering lock (shorter turning circle only 32' 9")

make deliveries in today's busy streets wonderfully simple, easily accessible. Another important factor is that new suspension and lower centre of gravity provide on-the-road stability and smoothness which mean extra protection for the most fragile load. Yes, point by point, the Ford 7 cwt. Van is really sparkling with the most wanted features in light delivery work.



*Ford's latest power-packed
and thrifty 10 h.p. engine!*

This van is powered by the entirely new 10 h.p. Ford engine which gives the new Prefect and Anglia cars their brilliant performance. It develops 36 B.H.P. with up to 40 m.p.g.—and incorporates new features that result in a combination of power output, smoothness and consistent economy. Better accessibility means far easier and faster routine servicing—no “tucked-away” components to reach for.



**Feels and drives
like a car!**

Driving the Ford 7 cwt. Van has the feel of a roomy sedan car ...the softer worm and peg type steering gives greater ease of control,

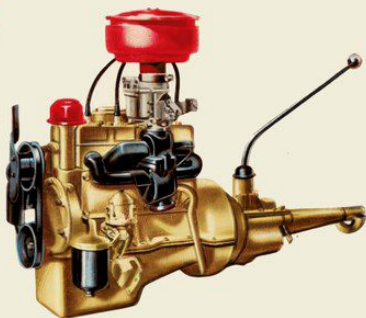


*In every advanced feature
it's designed for more profitable operation*

**POWER TO WEIGHT RATIO... MANOEUVRABILITY... ENGINEERING
IDEAL FOR CITY OR SUBURBAN DELIVERIES OR LONG DISTANCE RUNNING**

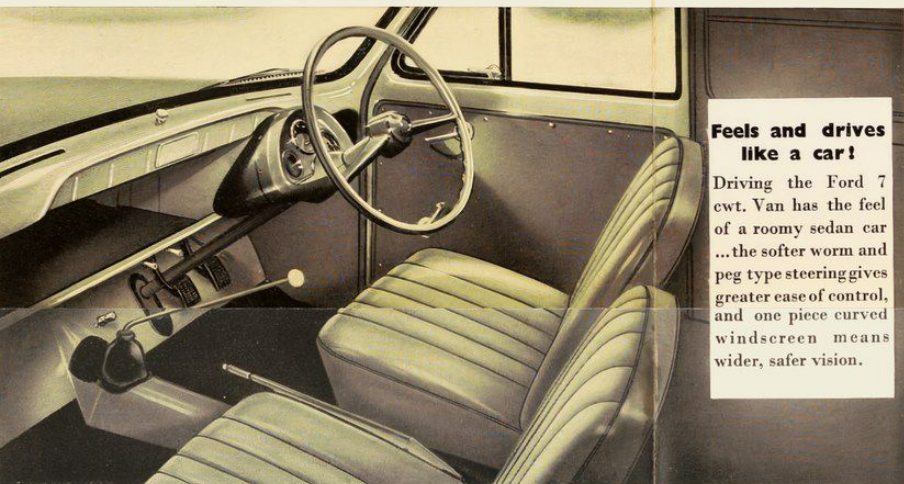
Power to weight ratio of 72 lbs. per B.H.P. when fully loaded means easy, faster performance with less engine effort and lower petrol consumption. And all excess weight is eliminated without detracting a fraction from the more rugged, tougher structure. For parking and manoeuvrability the small front-to-back dimensions (only 11' 4") and steering lock (shorter turning circle only 32' 9")

make deliveries in today's busy streets wonderfully simple, easily accessible. Another important factor is that new suspension and lower centre of gravity provide on-the-road stability and smoothness which mean extra protection for the most fragile load. Yes, point by point, the Ford 7 cwt. Van is really sparkling with the most wanted features in light delivery work.



*Ford's latest power-packed
and thrifty 10 h.p. engine!*

This van is powered by the entirely new 10 h.p. Ford engine which gives the new Prefect and Anglia cars their brilliant performance. It develops 36 B.H.P. with up to 40 m.p.g.—and incorporates new features that result in a combination of power output, smoothness and consistent economy. Better accessibility means far easier and faster routine servicing—no “tucked-away” components to reach for.



**Feels and drives
like a car!**

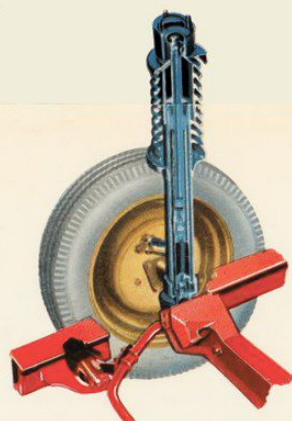
Driving the Ford 7 cwt. Van has the feel of a roomy sedan car ... the softer worm and peg type steering gives greater ease of control, and one piece curved windscreen means wider, safer vision.

56.6 CUBIC FEET OF LOAD SPACE



**Big load space—
just look at the
room!**

From top to bottom, side to side, and along the depth there's room to spare for even bulky loads. Floor level is just right to eliminate unnecessary lifting — and doors open full width for easiest accessibility and faster handling.

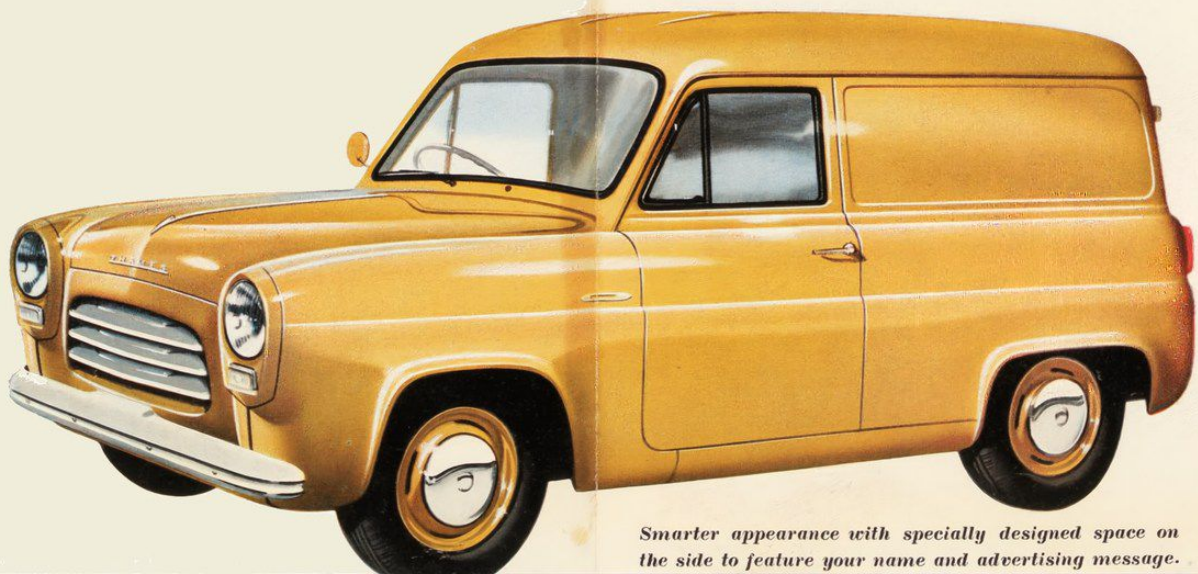


Comfort and protection!

Miracle Ride: An all better feature unique among light vans. Road shocks are reduced because each wheel is free to rise and fall independently of the other—with inbuilt shock absorbers damping out coil spring compression and rebound the shocks transmitted to each wheel are isolated and absorbed.

*Smooth, responsive
hydraulic brakes!*

No jolting stops, just s-m-o-o-t-h response to your foot pressure with big hydraulic brakes for extra stopping power. Foot brake operates on all wheels—hand brake on rear wheels only.



*Smarter appearance with specially designed space on
the side to feature your name and advertising message.*

S P E C I F I C A T I O N S

ENGINE—Four cylinder side valve, bore 2.5 ins. (63.5 mm.). Stroke 3.64 ins. (92.5 mm.) Cubic Capacity 1,172 c.c. Compression ratio 7.0 : 1. B.H.P. 36 @ 4,500 r.p.m. Torque lbs./ft. 52 @ 2,500 r.p.m. Three bearing, dynamically balanced crankshaft. Detachable cast iron cylinder head. Autothermic aluminium alloy pistons. Chain driven camshaft. Three point suspension in rubber of engine and gearbox.

ENGINE LUBRICATION—Full pressure feed by submerged gear-type pump to main, camshaft and connecting rod bearings. By-pass type external filter. Pressure relief valve in pump.

IGNITION—12 volt coil ignition. Automatic advance and retard distributor. Spark plug size 14 mm.

FUEL SYSTEM—Diaphragm-type mechanical fuel pump. Down-draught carburettor with combined air cleaner and silencer. Fuel tank capacity 5.5 gallons (31.82 litres).

COOLING SYSTEM—Belt driven, two-blade fan. Water pump. Thermostatic control. Capacity of system 11½ pints (6.623 litres).

TRANSMISSION—Single dry plate clutch. Permanently lubricated throw-out thrust bearing. Central gear lever. Three speed gear box. Synchromesh on second and third gears. Helically cut, constant mesh gears. Overall ratios : 1st, 16.232 : 1 ; 2nd, 8.889 : 1 ; 3rd, 4.429 : 1 ; Reverse, 21.288 : 1 ; Gearbox oil capacity 1.68 pints (.95 litres).

REAR AXLE—Three quarter floating axle, crown wheel and pinion final drive. Dynamically balanced, open drive shaft. Needle roller bearing universal joints. Axle ratio, 4.429 : 1. Oil capacity 1.36 pints (.773 litres).

FRONT SUSPENSION—Built-in independent front wheel suspension. Directly operated coil springs mounted on special hydraulic double acting shock absorbers.

BRAKES—Hydraulic internal expanding 7 ins. x 1.25 ins. (177.8 mm. x 31.75 mm.). Front, two leading shoes. Rear, single leading shoe. Total brake lining area 67.2 sq. ins. (436.8 sq. cm.). Foot brake on all four wheels, handbrake on rear wheels only.

STEERING—Worm and peg type. Ratio 11.5 : 1. Two spoke steering wheel 16 ins. (406.4 mm.) diameter.

WHEELS AND TYRES—Pressed steel wide base rims. Tyres 5.60-13 (6 ply).

ELECTRICAL EQUIPMENT—Two brush, ventilated generator. Drive, adjustable wedge belt. Compensated voltage control. 12 volt starter motor. Electrical high frequency type horn operated by control button on steering column. Battery 12 volt 40 amp. hr. at 20 hour rate.

INSTRUMENTS—Located directly ahead of the driver and incorporating speedometer, odometer, fuel gauge, ammeter, oil warning light and main beam indicator.

CONTROLS—Choke and starter knobs : ignition, lighting and instrument lighting switches ; windscreen wiper knob ; foot operated headlamp dimmer switch.

BODY—All steel welded integral body/frame construction with three longitudinal strengthening swages in roof. Side doors are hinged at the front. Nearside door may be locked from inside, outside lock on driver's door. Large one piece curved windscreen. Hinged quarter vent windows in side doors with full drop door windows operated by interior winding handle. Rear view mirror on front fender. Sun visor on driver's side. One ashtray centrally mounted in fascia panel. Bucket type seats. Driver's seat adjustable to a suitable driving position. Full width parcel tray beneath fascia panel.

¾ in. plywood floor and semi-circular non-detachable wheelhouses.

Two large rear doors with fixed window in each door. Doors are fitted with self aligning hinges and check arms to retain them in the fully open position and may be locked from outside by means of a three way locking mechanism incorporated in the handle.

The spare wheel is located on the left hand side of the body interior at the rear of the passenger seat in a vertical position.

GENERAL EQUIPMENT—Vacuum operated windscreen wiper. Moisture-proof flush fitting headlamps. Twin tail lights and reflectors. Rear number plate illumination light. Rear view mirror. Provision for fitting heater and demister.

GENERAL DIMENSIONS—(See diagrams on previous folds).

Overall width : 5 ft. 0½ ins. (1.53 m.).

Body Capacity : 56.6 cu. ft. (1,599 cu. m.).

Gross laden weight : 2,576 lbs.

Rear door opening : Width 3 ft. 6 ins. (1,067 m.).
Height 2 ft. 10½ ins. (.867 m.).

Load space : Width 4 ft. 1½ ins. (1.27 m.).

Turning circle : 32 ft. 9 ins. (9,982 m.).

Ford Motor Company of Australia Pty. Ltd., whose policy is one of continuous improvement, reserves the right subject to such regulations as may from time to time apply to change specifications and prices at any time without notice or incurring liability to purchasers.

FORD MOTOR COMPANY OF AUSTRALIA PTY. LTD.

(Incorporated in Victoria) Registered Office : Geelong, Victoria.