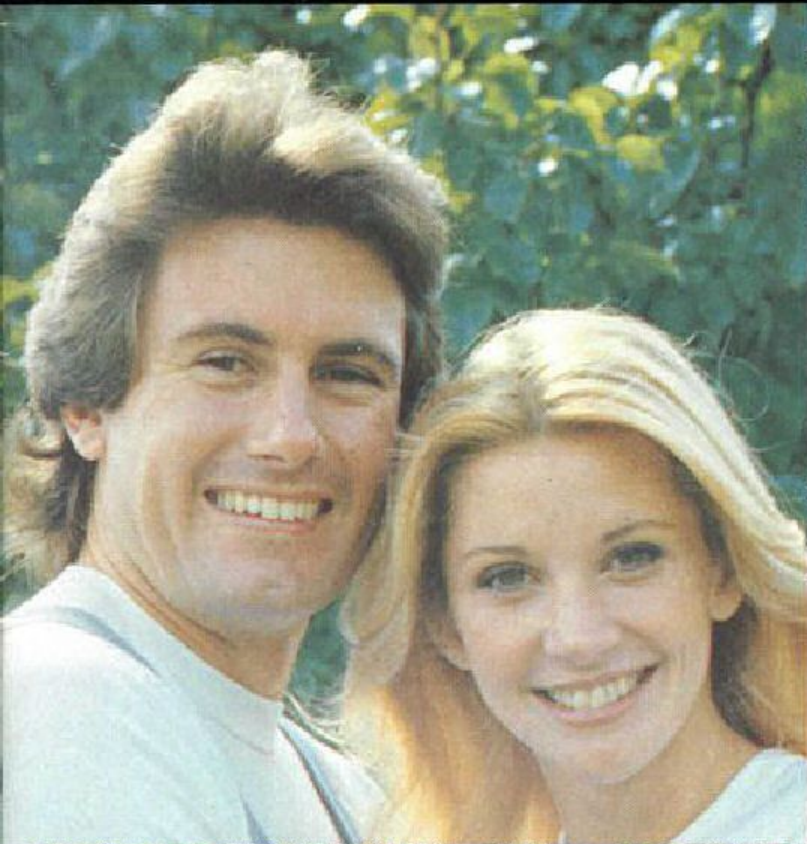


Say 'Hi' to a **Gemini**



The only Japanese small car sold and backed by Holden



Holden Gemini SL Coupe with fashion pack option



reclining front bucket seats, radio, carpet, electric clock, power-booster flow-through ventilation. And on top of all that, Holden Gemini is the only Japanese small car backed by the vast Holden Dealer network. So you're never far from parts and first-class service wherever you drive in Australia.

The price leader in the Holden Gemini range. Top performance, excellent handling and economy, good looks and comfort, big, big boot. Plus the full backing of the Holden Dealer network. Holden Gemini 4-door Sedan is the small car for today's buyer who is looking for room

A green Ford Gemini sedan is shown from a front-three-quarter view. The car has a boxy design typical of the 1980s, with a prominent chrome grille and rectangular headlights. The license plate area displays the word "Gemini". The car is parked on a light-colored surface.

All illustrations and specifications contained in this catalogue are based on the latest product information available at time of publication approval. The right is reserved to make changes at any time, without notice, in prices, colours, materials, equipment, specifications and models, and to discontinue models.

Some of the equipment shown throughout this catalogue is available at extra cost. Check with your Holden Dealer for complete information.



Holden Gemini SL Sedan



Holden Gemini SL Sports Coupe

The beautiful Coupe version of the Gemini range that's sure to drive you happy. It's got the sporty styling and strong clean lines of today that will look good tomorrow. There's superb visibility thanks to large glass areas and low belt line.

A powerful OHC '1600' engine that gives real performance. Comfort. Uncluttered shape with true fastback lines. A package set off by tasteful colour-keyed body pin stripes. Plus, of course, everything you've come to expect of the Japanese, backed by Australia's biggest parts and service network.



Holden Gemini SL Coupe
with fashion pack option



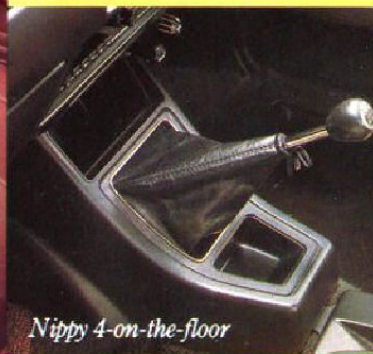
Holden Gemini SL Coupe with fashion pack option



Full foam seats



'1600' OHC engine



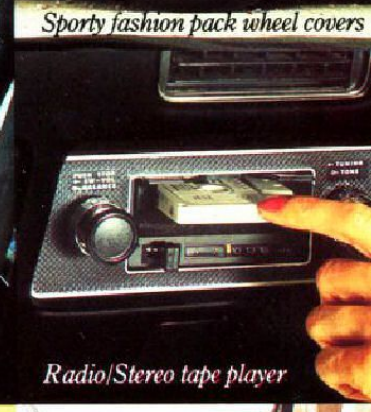
Nippy 4-on-the-floor



Fashion pack interior trim



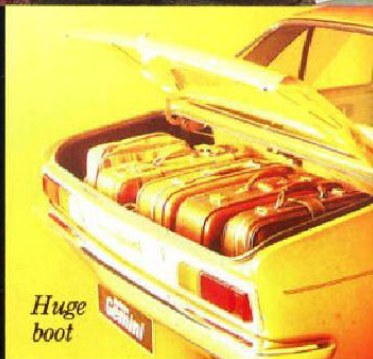
Sporty fashion pack wheel covers



Radio/Stereo tape player



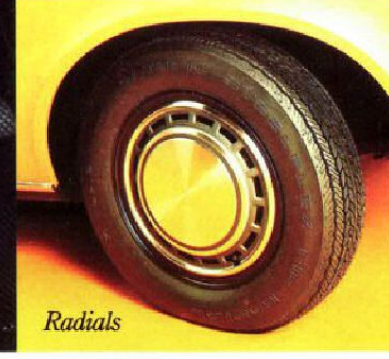
A real driver's dash



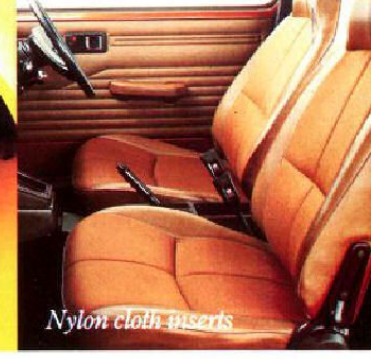
Huge boot



Tri-matic automatic transmission



Radials



Nylon cloth inserts

SL Features

You get a lot to start with

When you judge a car for value, you have to consider what you get as standard equipment. Holden Gemini 'SL' Sedan and 'SL' Sports Coupe deliver a complete list of features as standard.

- ☐ Power assisted brake system — front discs, rear drums.
- ☐ Push button radio with rear seat speaker.
- ☐ Electric clock.
- ☐ Door-to-door loop-pile carpet.
- ☐ Cigarette lighter.
- ☐ Steering column control stalks for windscreen washers/wipers and turn signals, headlight dimmer/flasher.
- ☐ Locking petrol cap.
- ☐ Armrests front and rear.
- ☐ Front seat centre console with storage space.
- ☐ Fully reclining full-foam front bucket seats with integral head restraints.
- ☐ Power assisted flow-through ventilation.
- ☐ Electric heated rear window (Coupe only).

- ☐ 10.9 cu. ft. (0.31 cu. mtrs.) boot.
- ☐ Single key locking system.
- ☐ Slam shut locking doors.
- ☐ Lockable glove-box.

Gemini Safety Features

- ☐ 3-speed heater/demister.
- ☐ Back-up lamps.
- ☐ Inertia reel front seat belts.
- ☐ Energy-absorbing steering column.
- ☐ Split circuit braking system.
- ☐ Hazard warning flasher.
- ☐ Shatter-resistant mirrors.
- ☐ Padded dash.
- ☐ Toughened windshield and safety glass windows.
- ☐ Anti-burst doorlocks.

Options

A car like the Holden Gemini 'SL' comes so well-equipped, there's hardly need for options. However, a selected few are available — designed to cover specific driving conditions, or for extra comfort and style. They're all factory-fitted too, so that means they're covered by the GMH 12/20 warranty.

Your Holden Gemini Dealer can also offer a selected list of GMH approved accessories for Holden Gemini. And once again, if you have them fitted when you take delivery of your Gemini, they're all covered by the GMH 12/20 warranty.

Special Suspension Package

This package includes steel belted radial tyres and front stabilizer bar, designed to give you even more responsive handling in all conditions.

Gemini Fashion Pack

To really set-off your Holden Gemini 'SL' Sedan or Coupe, there's a Fashion Pack option you can order. This includes sporty wheel covers for that extra dash of flair outside, plus handsome custom plaid nylon cloth trim inserts in the door panels and seats. A feature that not only gives your Gemini an interior with a difference but makes driving even more comfortable, especially in hot weather.

Tri-matic automatic transmission with 'T' bar floorshift

The famous smoothness and reliability of GMH's 3-speed Tri-matic for those who prefer the convenience of an automatic car.

Fully integrated air conditioning

No matter how hot and humid it is outside, you arrive cool and fresh, the climate control cools, heats, demists, de-humidifies.

Nylon cloth inserts

This handsome addition makes driving in hot weather a breeze. Nylon cloth seat inserts colour keyed to the upholstery of the car.

Specifications

Engine

4-cylinders. Bore and stroke 82.0 x 75.0 mm (3.23 x 2.95 ins.). Capacity 1584 cm³ (96.7 cu. in.). Gross output 61 kW (82 bhp) @ 5200 rpm. Gross torque 127 Nm (94 lbs./ft.) @ 3600 rpm. Compression ratio 8.7:1. RAC rating 16.69.

Engine Features

OHC in-line engine of oversquare design. Aluminium alloy cylinder head for high thermal efficiency, rapid warm-up and fuel economy. Five bearing crankshaft.

Manual transmission

4-speed floor shift. All synchromesh on forward gears. Gear ratios to 1: First 3.51, Second 2.17, Third 1.42, Fourth 1.00. Reverse 3.93. Single dry plate clutch. Area both facings 362 sq. cm. (56 sq. in.). Cable operated.

Rear Axle

Standard ratio 3.89:1.

Steering

Energy-absorbing steering column with intermediate flexible coupling at steering box. Rack and pinion gear. Life lubricated. Gear ratio 20.7:1.

Electrical System

12 volt, 40 amp hour capacity battery — 7 plates per cell. Generator, 12 pole star-wound stator, diode-rectified.

Fuel System

Two-barrel down-draft carburettor. Automatic choke. Fuel tank capacity 52 litres (11.5 gallons).

Dimensions

Wheelbase: 2404 mm (94.6 ins.).
Track: Front — 1301 mm (51.2 ins.).
Rear — 1318 mm (51.9 ins.).
Overall Length: 4133 mm (162.7 ins.).
Overall Width: 1570 mm (61.8 ins.).
Turning Circle: 9.4 metres (30.8 ft.).
Estimated Kerb Weight: 4-door Sedan 900 kg (2004 lbs.). 4-door SL Sedan 908 kg (2028 lbs.). 2-door SL Coupe: 894 kg (1984 lbs.).

Speedometer

Kilometre Speedometer — Odometer, Trip meter.

Brakes

Front: Discs. Power assisted on 'SL' models. Hub with bolt-on rotor-opposed piston, fixed caliper. Disc outer diameter 239.0 mm (9.41 ins.).
Thickness: 10.0 mm (0.39 ins.).
Swept area: 2 discs — 2 surfaces 1080.5 sq. cm. (167.5 sq. ins.).

Rear: Drums. Power assisted on 'SL' models. Duo servo type.
Effective swept area: 638.3 sq. cms. (98.96 sq. ins.).
Total swept area: Disc/drum 1719 sq. cms. (266.5 sq. ins.).

Suspension

Front: Independent with coil springs. Long and short control arms. Hydraulic double-acting shock absorbers.
Rear: Torque tube integral with live axle. 3 links used to locate axle — 2 longitudinal, 1 lateral. Double-acting shock absorbers.

Wheels/Tyres

Wheels: Disc type with safety beads on inner and outer rim flanges.
Rims: 13. 4.50JJ. 4 studs.
Tyres: Y78L 13 with 4-ply rating.

Extended Service Intervals

We're so sure of Gemini's reliability that regular servicing is necessary only every 10,000 kms. or six months.

GMH 12/20 Warranty

Every Holden Gemini is covered by the GMH warranty which covers your vehicle for the first 12 months or 20,000 kilometres.

General Motors-Holden's
Sales Pty. Limited

Issued, March 1977. Copyright G 137



**People's
Trust
Holden**

Holden Gemini SL Sedan with fashion pack option