

International

S-LINE

4x2

S-2670 WITH NTC 230

GVM (tonne)	STD 14.04		15.62	
FRONT AXLE	FA-339	5.40	FA-339	5.40
Suspension	Std.	5.40	Std.	5.40
Tyres	10.00 x 20.14	5.48	10.00R20.16	5.48
Rating		5.40		5.40
REAR AXLE	RA-57	10.40	RA-57	10.40
Suspension	Std.	10.66	Std.	10.66
Tyres	10.00 x 20.12	8.64	10.00R20.16	10.22
Rating		8.64		10.22

GCM (tonne)

Standard32.0

STANDARD EQUIPMENT

AXLE, FRONT

FA-339, 5.4t capacity
Forged steel I-beam

AXLE, REAR

RA-57, 10.4t capacity, single reduction
Ratio: 4.11:1

BRAKES, PARKING

Spring actuated, piggy-back on rear axle
Total lining area: 2800 cm² (434 in²)

BRAKES, SERVICE

Dual air system with 0.368 m³/min (13 CFM)
compressor, with low air pressure warning
light and buzzer.

Size: 419 x 127 mm (16 1/2 x 5") S-cam front

419 x 178 mm (16 1/2 x 7") S-cam rear

Total lining area: 4813 cm² (746 in²)

Two air reservoirs — total volume 62.9 litres
(3840 in³)

CAB

2.28 m width all-steel construction with tilting
fibreglass hood and fenders.

Door locks on both doors.

National Cush-N-Aire drivers seat.

Single passengers seat.

Seat belts for driver and passenger.

Westcoast type mirrors.

Laminated Windscreen.

Electric 2-speed windscreen wipers.

Windscreen washers.

Sunvisors for driver and passenger.

Cigar lighter.

Ash tray.

Coat hook.

Interior light with courtesy switch on drivers
door.

Arm rests on doors.

Heater/demister with 3-speed fan.

Lockable tool compartment under passengers
seat.

Manifest pockets on rear panel and drivers
door.

CAB (continued)

Carpets.

CB Radio 12V supply socket.

Instruments comprising speedometer,
odometer, tachometer, voltmeter, fuel gauge,
oil pressure gauge, water temperature gauge
and dual air pressure gauges.

Brake fail warning light.

CLUTCH

356 mm (14") twin plate, self adjusting,
mechanical control.

Total lining area: 2730 cm² (423 in²)

DRIVELINE

1710 Series with glidecote splines.

ELECTRICAL SYSTEM

12 volt with 85 amp alternator.

Three 80 amp.hr. capacity batteries, negative to
earth.

Circular 60/55 watt quartz halogen headlights
with front parking lights.

Double face front directional signals with side
reflectors.

Combination stop, tail, directional and
reversing lights.

Flush mounted cab clearance and
identification lights.

Clearance lights on mirrors.

Front and rear flashing hazard signals.

Fuse panel to protect circuits.

Dual air horns.

ENGINE

Cummins NTC 230 HT

Gross power: 171 kW at 2100 RPM.

Gross torque: 1091 Nm at 1300 RPM.

14.0 litre (855 cu in) displacement, 15.8:1

compression ratio.

Modulated fan clutch.

Full flow oil filter.

Remote mounted by-pass oil filter.

"Spin on" corrosion resistor.

406 mm (16") Cyclopac dry element air cleaner
with restriction indicator.

Vertical muffler and tailpipe.

ENGINE (continued)

Bolted, crossflow radiator W/de-aeration
system, remote mounted surge tank and
sight glass. Frontal area: 7742 cm² (1200 in²).

FINISH

Electrophoretic deposited undercoat with
acrylic enamel finishing coat.

Interior colour scheme: Sierra tan with chestnut
trim.

Hood, cab and fenders: choice of any standard
IH colour.

Chassis, fuel tanks and wheels: Red.

Bumper: Silver metallic.

FRAME

Flange head bolted construction.

Heat treated steel channel 760 MPa yield
strength, 257 x 89 x 8 mm (10 1/8 x 3 1/2 x 5/8 in).

Section modulus: 243 cm³ (14.8 in³).

30° swept back, formed steel, front bumper.

Wheelbase: 4.06 m (160").

FUEL SYSTEM

Dual fuel tanks

— 420 litre (92 gal) right side.

— 310 litre (68 gal) left side.

Mechanical fuel pump.

Single fuel filter.

STEERING

S-331 (Sheppard M382) power-assisted steering
gear with belt driven pump.

508 mm (20 in) diameter steering wheel.

Three-jointed steering column.

SUSPENSION

Semi-elliptical leaf springs.

Front: 1.37 m x 100 mm leaf springs with
telescopic shock absorbers, 5.4t capacity at
ground.

Rear: Variable rate springs, 10.66t capacity at
ground.

TRANSMISSION:

T471 (RTF9509A) twin-countershaft Roadranger,

TRANSMISSION (continued)

9-speed direct, constant mesh.
 Ratios: 11.83, 7.90, 5.79, 4.32, 3.20, 2.47, 1.81,
 1.35, 1.00;
 Reverse 12.37, 3.87 : 1.

WHEELS AND TYRES

Single front and dual rear.
 Cast spoke wheels with 7.50 rims.
 10.00 x 20, 14 ply tyres — front.
 10.00 x 20, 12 ply tyres — rear.
 Spare rim.

OPTIONAL EQUIPMENT**BRAKES, TRAILER**

Semi trailer connections with trailer protection

BRAKES, TRAILER (continued)

valve and hand control valve.
 7-pin lighting socket.

CAB

Custom trim package comprising:
 — padded interior trim.
 — padded door trim with vinyl dispatch
 pouches.
 — electric clock.
 — hour meter.
 — heated mirror.

Air conditioning.

Transmission oil temperature gauge.

Engine oil temperature gauge.

CAB (continued)

Radio.
 7-day tachograph.

ELECTRICAL SYSTEM

Fifth wheel mounting light.

ENGINE

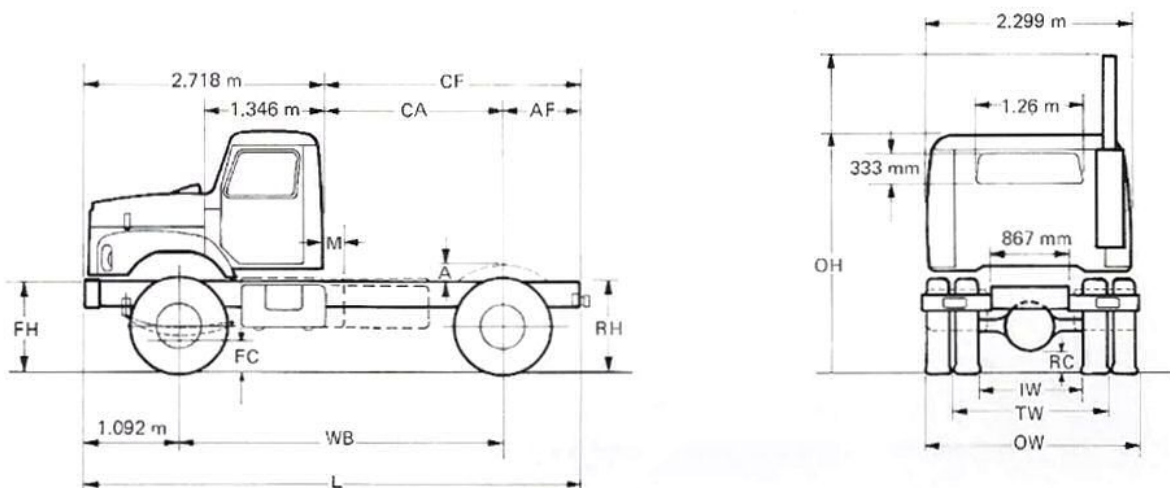
Jacobs engine brake.
 Bright finish muffler guard and stack.
 Electric low coolant indicator and buzzer*
 *Not available on first production.

FINISH

Two-colour applique on cab exterior.

WHEELS AND TYRES

10.00 R20 — 16 ply radial tyres.

S-2670 with NTC230**Dimensions, with 10.00 x 20 tyres m**

(FH) Frame height — front axle — loaded: 932 mm empty: 958 mm	(RC) Ground clearance — rear axle: 228.2 mm	(IW) Inside width — rear wheels: 1.23 m
	(OW) Overall width — front hood: 2.42 m rear axle: 2.43 m	
(RH) Frame height — rear axle — loaded: 932 mm empty: 1.03 m	(OH) Overall height — to top of cab: 2.69 m to top of exhaust: 3.50 m	(A) Max. tyre height — with 10.00 x 20 tyres: 188 mm
	(TW) Tread width — front axle: 2.04 m rear axle: 1.83 m	(M) (Minimum clearance necessary between back of cab and body) swing clearance: 345 mm rigid body clearance: 343 mm
(FC) Ground clearance — front axle: 296 mm		

Chassis Dimensions**Turning Circle****Chassis Mass t (lb.)**

WB	CA	AF	CF	L	W/- Bumper Clearance	Front	Rear	Total
4.06 m	2.44 m	889 mm	3.33 m	6.05 m	18.8 m

IMPORTANT

It is believed that the illustrations, information and specifications presented and referred to herein were correct at the time this publication was approved for printing.
 ■ Metric and Imperial quantities shown are equivalent within the implied accuracy. ■ Illustrations may include equipment which is not necessarily standard.
 ■ International Harvester Australia Limited reserves the right, subject to any statutory enactment of Australia and/or a State or Territory thereof, and/or the regulations of any competent authority which may apply from time to time at their or its discretion, and without notice, to discontinue or change the specification or design of the products referred to herein and any options therefore at any time without incurring any liability whatsoever to any purchaser thereof. ■ The availability at any particular time of any of the products or items of standard optional or available equipment referred to, described or illustrated in this specification leaflet will be dependent upon the local and/or overseas supply situation prevailing at that time. ■ You should always consult your IH Dealer, Distributor or Company Branch to ensure you obtain the latest information on models, specifications, features, availability and prices.

International Trucks
 INTERNATIONAL HARVESTER
 AUSTRALIA LIMITED

YOUR INTERNATIONAL DEALER:

PRICE QUOTED:

INTERNATIONAL HARVESTER AUSTRALIA LIMITED.

A-22-H (April, 1979)

IHC
 A SPECIAL
 BRAND OF
 FINANCE