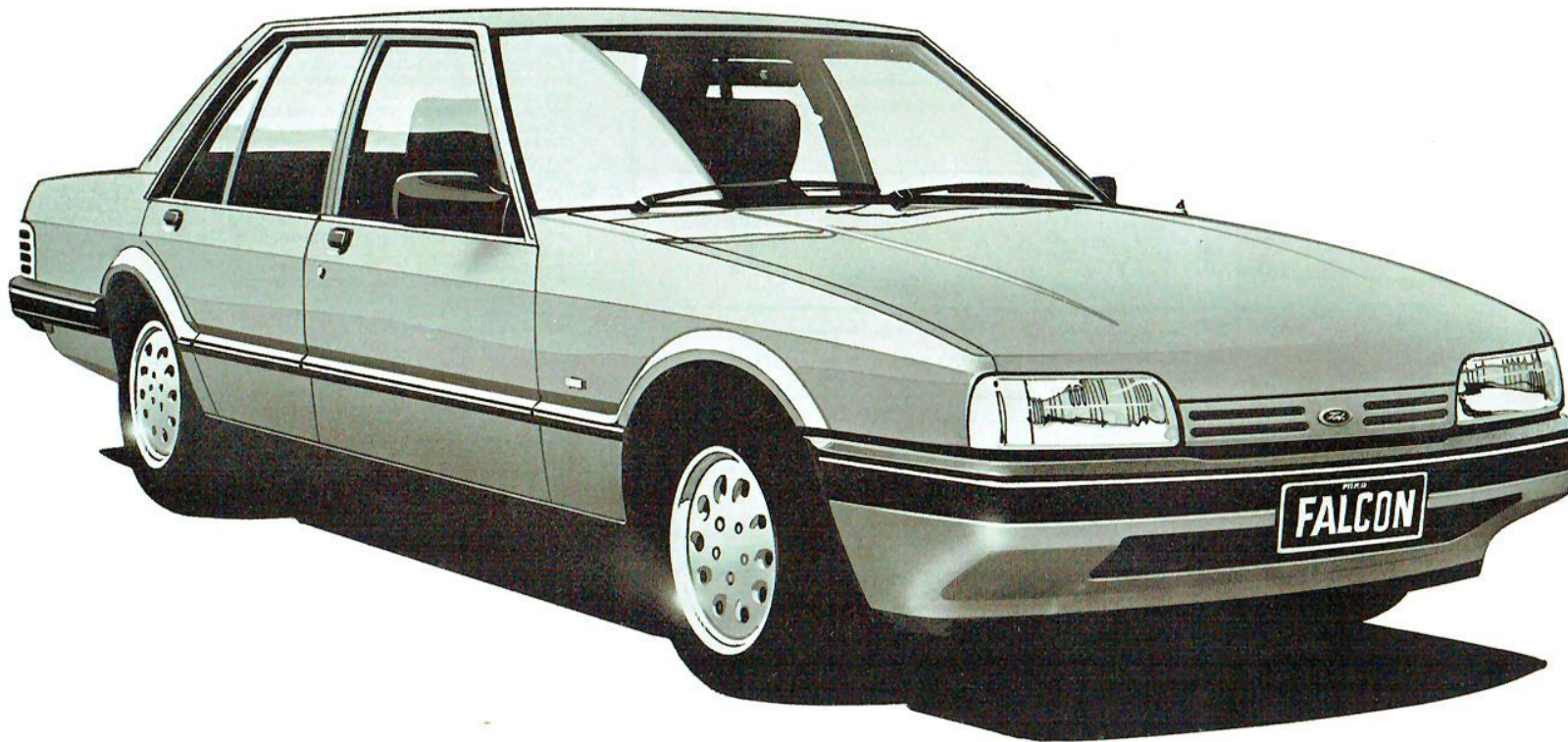


Ford Falcon GL Sedan



Ford Falcon GL Sedan Standard Equipment Highlights:

- 3.3 litre Alloy Head II crossflow 6-cylinder engine
- Electronic ignition
- 4-speed manual floor shift transmission
- AM/FM stereo radio cassette player
- Steel wheels: 14x5½ JJ
- Full wheel covers
- Steel belt radial ply tyres: P185/75SR14 or CR78S14
- Fold down rear seat centre section
- Power assisted front disc brakes
- Tinted band laminated windscreen
- Quartz halogen 'z beam' headlamps
- Integral driving lights
- Bodyside protection mouldings
- Foldaway right-hand and left-hand exterior rear-view mirror with interior remote controls
- Hazard flashers
- 'Soft-feel' 4-spoke steering wheel
- Digital clock
- 'Lights on' warning lamp
- 2-speed windscreen wipers
- Intermittent wipe setting for windscreen wipers
- 4-speed heater/demister
- Prismatic day/night interior rear-view mirror
- Cloth seat facings
- Tripmeter
- Reclining front bucket seats
- Carpeted passenger compartment floor
- Interior courtesy light operated by all doors
- Electric rear window demister
- Rear door locks with child-proof setting
- Ignition lock illumination
- Glove box light
- Luggage compartment courtesy light
- Carpeted luggage compartment floor
- Front and outboard rear inertia reel seat belts
- Tinted side and rear glass
- Padded head restraints
- Wrap-around front and rear bumpers
- Moulded door trims



Ford Australia-We're moving with you.

FORD FALCON



Specifications

FORD FALCON GL SEDAN

Engine	3.3 litre	4.1 litre	4.1 litre EFI
Power DIN Kw*	90 @ 4100	102 @ 3750	120 @ 4000
Torque DIN Nm*	240 @ 2500	315 @ 2400	333 @ 3000
Cylinder head material:	Aluminium alloy with sintered iron valve seat inserts		Aluminium alloy with sintered iron valve seat inserts
Cylinders	6 in line	6 in line	6 in line
Main Bearings	7	7	7
Fan	Temperature sensitive viscous clutch fan	Temperature sensitive viscous clutch fan	Temperature sensitive viscous clutch fan
Bore	93.5mm	93.5mm	93.5mm
Stroke	79.4mm	99.3mm	99.3mm
Capacity	3273cc	4089cc	4089cc
Valve Gear	Overhead valves with hydraulic tappets		Overhead valves with hydraulic tappets
Camshaft Drive	Chain Drive		Chain Drive
Compression Ratio*	9.15:1	9.35:1	8.8:1

*Not necessarily applicable for vehicles manufactured for sale in NSW.

Suspension

Front	<ul style="list-style-type: none"> Independent short/long arm Progressive rate coil springing Twin tube telescopic shock absorbers mounted co-axially within the coil springs 22mm diameter stabiliser bar 	Rear	<ul style="list-style-type: none"> Rigid axle 4 trailing arms with Watts Linkage Progressive rate coil springing Twin tube telescopic shock absorbers mounted co-axially within the coil springs 22mm rear stabiliser bar
-------	--	------	--

Fuel System	3.3 and 4.1 litre	4.1 litre EFI
	Weber model 'ADM' dual venturi, sequential (progressive) throttle, fixed jet downdraft carburettor with electrically operated choke. Mechanical fuel pump.	Digital computer control based on volumetric air flow and engine speed with additional fuel flow modifiers from throttle position, sensor, engine coolant sensor and vane air meter temperature sensor.

Dimensions	Metric	Imperial
Overall Length	4774mm	187'9"
Overall Width	1860mm	73'2"
Overall Height	1367mm	53'8"
Wheelbase	2829mm	111'4"
Track — Front	1550mm	61'0"
— Rear	1525mm	60'0"
Usable fuel tank capacity	66 litres	14.5 gal.
	80 litres Optional (b)	17.6 gal.
Luggage compartment capacity	0.41m ³	74.6 ft ³
Turning Circle — curb to curb	11.0m	36 ft

Selected Fuel Economy Data

This data is based upon AS2077 tests conducted by Ford. It is not applicable to vehicles manufactured for sale in New South Wales.

3.3 litre 4-speed manual

City Cycle	Highway Cycle
23.5 mpg	35.3 mpg
12.0 litres/100km	8.0 litres/100km

3.3 litre 5-speed manual

City Cycle	Highway Cycle
23.5 mpg	35.3 mpg
12.0 litres/100km	8.0 litres/100km

4.1 litre 3-speed automatic

City Cycle	Highway Cycle
21.7 mpg	29.7 mpg
13.0 litres/100km	9.5 litres/100km

These figures are provided to assist you in comparing the fuel consumption of Falcon with other vehicles. The actual fuel consumption you achieve will depend, however, on many factors, including your driving habits, the prevailing conditions and your vehicle's equipment, condition and use.

Options

Engine/Transmission Combinations

Engine	Transmission	Notes	Availability
3.3 litre	3-speed manual column shift	(a)	ORC
Alloy Head II	4-speed manual floor shift		STD
	5-speed manual floor shift		OPT
	Column automatic		OPT
	T-Bar automatic		OPT
4.1 litre	4-speed manual floor shift		OPT
Alloy Head II	Column automatic		OPT
	T-Bar automatic		OPT
4.1 litre EFI	4-speed manual floor shift	(b)	OPT
	T-bar automatic	(b)	OPT

Convenience

Integrated air conditioning	(c)	OPT
Centafold — front seat	(d)	OPT
Extended Range Fuel Tank (80 litres)	(b)	OPT

Sports Type

S-Pack	(d)(e)	OPT
Alloy road wheels	(f)	OPT
Sports Handling Suspension	(g)	OPT

Power

4 wheel power assisted disc brakes and limited slip differential	(h)	OPT
Power steering	(a)	OPT

Tyre Availability

P185/75SR14 steel belt radial ply or CR78S14 steel belt radial ply		STD
P195/75SR14 steel belt radial ply or ER78S14 steel belt radial ply		OPT
ER70H14 steel belt radial ply (Standard with S-Pack option)		OPT

Other Packs

Heavy Duty Suspension	(i)	OPT
Towing Pack	(j)	OPT
Heavy Duty Towing Cooling Pack	(k)	OPT

Appearance

Metallic Paint	(l)	OPT
Prestige paint		OPT

OPT — Optional at extra cost. STD — Standard.
ORC — Optional at reduced cost. NCO — No cost option.

About this specification Sheet. This sheet is designed to provide you with selected specification data for the Ford Products which have been described in a general way in the relevant brochure. Because of changes in conditions and circumstances Ford* reserves the right, subject to all applicable laws, at any time, at their discretion, and without notice to discontinue or change the features, designs, materials, colours and other specifications and the prices of their products, and to either permanently or temporarily withdraw any such products from the market without incurring any liability to any prospective purchaser or purchaser. Because of variations which occur in manufactured products, all capacities, measurements, dimensions and weights quoted in the relevant brochure and this specification sheet should be taken as approximate only. Always consult an Authorised Ford Dealer for the latest information with respect to features, specifications, prices, optional equipment and availability before deciding to place an order.

*FORD MOTOR COMPANY OF AUSTRALIA LIMITED
(Incorporated in Victoria)
FORD SALES COMPANY OF AUSTRALIA LIMITED
(Incorporated in Victoria)
Registered offices:
1735 SYDNEY ROAD, CAMPBELLFIELD, VICTORIA, 3061.

Footnotes

- Power steering is not available with a 3-speed manual column shift transmission.
- ER70H14 steel belt radial ply tyres and the extended range fuel tank (80 litres) are mandatory options at extra cost with the 4.1 litre EFI engine.
- On vehicles equipped with a floor mounted transmission an upgraded console with ducting to the rear compartment is also fitted. Air conditioning fitted as an accessory and not fitted during production does not include upgraded console as part of the air conditioning accessory package.
- Centafold is only available with a column shift transmission and is not available if the S-Pack is specified. When Centafold is specified the centre console is deleted and the ashtray and cigar lighter are relocated to the centre dash.
- The S-Pack option is only available with floor shift transmission and includes:
 - Fog lamps
 - Styled steel wheels with chrome trim rings
 - ER70H14 steel belted radial tyres
 - Sports instrumentation, consisting of analogue display tachometer and speedometer and a pair of dual function electronic vacuum fluorescent minor gauges. The bar graph type minor gauges provide water temperature and fuel level, or, at the touch of a button, the display will indicate battery voltage and oil pressure. If a critical situation develops, the display will automatically revert to that function
 - Checked tweed cloth seat facings
 - Steering column rake adjustment
 - Adjustable lumbar support and seat tilt for the driver
 - Driver's footrest
 - Distinctive paint/strip treatment
- The alloy road wheels option cannot be specified in conjunction with P185/75SR14 steel belt radial ply tyres.
- The Sports Handling Suspension option consists of increased rate springs, lower ride height, increased diameter front stabilizer bar and sports shock absorbers.
- 4-wheel power assisted disc brakes and limited slip differential are optional at extra cost only when a 4.1 litre engine is specified.
- The Heavy Duty Suspension option consists of heavy duty springs, increased ride height (on sedans and wagons) and heavy duty shock absorbers.
- The Towing Pack is a factory-fitted option and provides a towing capacity of 1200 kgs for 3.3 litre automatic and all 4.1 litre vehicles, or 1000 kgs for 3.3 litre manual vehicles, when used in conjunction with a suitable caravan or trailer braking system and towing equipment. This pack consists of:
 - Tow bar
 - Gooseneck
 - Wiring harness with 7 pin electrical connector
 - Transmission oil cooler (automatic transmissions only).

Note: The caravan or trailer braking system and any other items (such as the tow ball and safety chains) required for the attachment of a trailer, caravan or the like to the vehicle are not supplied as part of the Pack, and must be purchased at extra cost or be supplied by the purchaser of the vehicle.
- The Towing Pack is designed to be incorporated in the vehicle during the assembly of the vehicle. The actual towing capability and performance of a vehicle will depend upon many factors including the suitability of the caravan, trailer etc., the condition of the vehicle, the vehicle load, the vehicle specifications (including engine capacity, transmission type, axle ratio, tyre type and size), weather conditions, road gradient, terrain and other prevailing conditions. A towing accessory is also available for fitment from your Authorised Ford Dealer. A Ford-approved transmission oil cooler must be fitted in conjunction with any towing accessory fitted to automatic vehicles and used to tow a gross weight of more than 500 kgs. Consult your Authorised Ford Dealer for the latest information with respect to the specifications and the availability of this accessory towing pack.
- This pack comprises an increased capacity radiator (unless already fitted as part of the EFI engine option), and shroud (unless already fitted as part of the Air conditioning option).
- Not all colours are available in metallic paint. Consult the Ford colour selector or your Authorised Ford Dealer to determine which colours are available in metallic paint.



Ford Australia-We're moving with you.

XF FALCON
Printed September 1984

