

REWARD YOURSELF WITH NEW FORD METEOR





NEW METEOR - MORE REWARDING THAN EVER

In the world of compact sedans, Ford introduces a fresh, exciting combination of style and practicality that adds up to a positively rewarding experience. The new Meteor. With its totally new, aerodynamically efficient and handsome styling, a new engine, improved transmission, brakes and suspension and roomy new interior, Meteor is set to raise the standards by which cars in its class are judged. In addition to a host of new features, both the top-value GL and luxurious Ghia models offer a range of options for your enjoyment.

New Meteor's European-inspired styling is shaped for lower wind resistance, with its upswept beltline, high bootline and steeply raked bonnet. And with styling efficiency comes the practicality of sedan configuration, with a capacious, useful boot, and a split fold-forward rear seat backrest.



METEOR GHIA - PACKED WITH LUXURY

In the luxurious, top-of-the-line Meteor Ghia colors are in soft harmony. Seats are faced in rich velours. Door-to-door loop pile carpet is also featured on door pockets and kick panels. Full wrap-over moulded door trims have contrasting velour inserts.

Thoughtful touches include a front passenger seat under-tray, centre console storage compartment, interior lamp with map spotlights, and an illuminated entry system. For the driver there's an array of truly functional aids, including comprehensive instrumentation, a driver's left footrest, electric remote-control rear view mirrors, power door locks, plus the innovative sedan feature of a rear window wash/wiper to assist rearward visibility.



Meteor Ghia Major Standard Features

- All-new 1.6 litre overhead camshaft engine
- Rack and pinion steering
- Front wheel drive
- 4 wheel independent suspension
- 5-speed manual transmission
- 4-wheel disc brakes
- Laminated windscreen
- Tinted side and rear glass
- Heated rear window
- Rear window washer/wiper
- 2-speed wipers with intermittent setting
- Illuminated entry system
- Electric remote control rear view mirrors
- Comprehensive instrumentation which includes a tachometer
- Adjustable tilt steering column
- Driver's seat height and tilt adjustment
- Adjustable lumbar support on driver's seat
- Luxurious velour trim
- Quartz digital clock
- Rear seat centre armrest
- Soft-feel steering wheel
- Front door courtesy lamps
- 60/40 split rear seat backrest
- AM/FM radio stereo/cassette with four speakers
- Power door locks
- Remote boot and fuel filler releases
- Child-proof setting on rear door locks



SMOOTHNESS AND COMFORT FOR NEW SATISFACTION

Detailed design and exhaustive engineering have made smoothness and comfort an integral part of the Meteor experience. Advanced aerodynamic design helps reduce wind noise, while the engine, transmission and suspension have been engineered to minimise the intrusion of noise and vibration into the passenger compartment.

Meteor's roomy new interior brings you a rewarding sense of wellbeing. A full flow-through ventilation system features new instrument panel vents and a 4-speed fan. In the instrument binnacle, a logical, clear arrangement of essential information is displayed by the speedometer, and the temperature and fuel gauges. Below these is an array of function warning/indicator lights including those for the turn signals and headlight high beam. The neat centre console contains heater demister slide controls, AM/FM radio stereo cassette, and a handy storage

bin. Between the two front bucket seats lies a useful tray for trinkets, loose change and other small items.

Remote controls for the boot and fuel filler release are right next to the driver's seat. In the rear a 60/40 split fold-forward rear seat backrest permits you to easily extend bootspace and provide seating for up to two rear passengers. Meteor has been designed, built and equipped for your complete enjoyment.



METEOR GL - GREAT VALUE IS ONLY ONE OF ITS REWARDS

The new Meteor GL offers you all the significant styling advances of the breed.

Beneath the sleek exterior is a world of rewarding comfort, with a subtly integrated color scheme and pleasantly textured tweed seating. Front bucket seats adjust easily to your preferred position. The steering wheel and all controls fall easily to hand. You'll appreciate features such as the laminated windscreen for added safety, intermittent windscreen wipers, the digital quartz clock, the AM/FM radio stereo cassette with rich, two-speaker sound.



Meteor GL Major Standard Features

All-new 1.6 litre overhead cam engine
Front wheel drive
Four wheel independent suspension
4 speed manual transmission
Turbo-cooled front disc brakes
Laminated windscreen
Tinted side and rear glass
Heated rear window
Manual remote control
right hand exterior rearview mirror
Two-speed wipers with an intermittent setting
Front mudflaps
Remote boot and fuel lid releases
Soft textured tweed seat trim
Quartz digital clock
Child proof setting on rear door locks
60/40 split fold forward rear seat backrest for extra boot space
Driver's seat tilt adjustment
AM/FM radio stereo/cassette with two speakers
Full wheel covers

THOUGHTFUL METEOR IDEAS FOR LASTING PLEASURE

1. A practical and innovative feature on the Ghia sedan is a rear window wiper/washer so you can maintain clear rearward visibility. Both Ghia and GL models are fitted with a heated rear window.



2. Meteor gives you the added convenience of remote releases to open the boot and petrol filler lid.



3. You keep an eye on your progress with the aid of this digital quartz clock, mounted on the instrument panel where both driver and front seat passenger can view it.



4. Meteor Ghia offers electrically operated left and right hand exterior rear view mirrors. On the GL there's a manual remote control mechanism for the driver's side exterior mirror.



5. You can select a preferred steering wheel position with Meteor's tilt adjustable steering column. (Ghia sedan only.)



6. Ghia model features a convenient illuminated entry system, comprising an illuminated driver side door lock and ignition lock.

7. Both Meteor models feature a practical 60/40 split fold-forward rear seat backrest which allows you to stow extra-long items into the boot through to the rear seat, and still leave room for one or two rear seat passengers.



8. Meteor Ghia driver's seat features adjustment for seat cushion tilt, fore and aft location, and back rake, plus a separate adjustment of the seat back for lumbar support that adds to long-distance comfort.



9. In addition to a centre console storage compartment and a trinket tray, Meteor Ghia provides this extremely useful storage tray under the front passenger's seat.

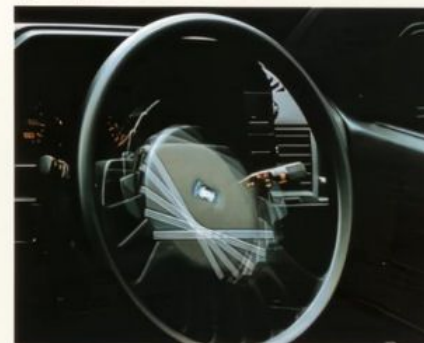


OPTIONS FOR EXTRA POWER PRESTIGE AND COMFORT

1. On Ghia sedans with manual transmission you can opt for the 1.6 litre engine with electronic fuel injection for extra performance, and smoothness.



2. Power steering is available as an option on Ghia Models fitted with automatic transmission—parking and manoeuvring in tight spots becomes that much easier.



3. Ghia and GL models can now be specified with a highly efficient factory-fitted air conditioner with dual settings. Maximum for really hot weather, Economy for milder weather.



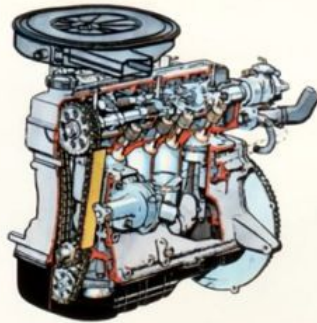
MORE POWER TO THE MIGHTY METEOR

Meteor boasts an all new, 1.6 litre engine which is not only powerful but incorporates many advanced features. It is quiet, light weight and delivers outstanding fuel economy and reliability.

The new powerplant is of overhead camshaft design, featuring aluminium cross-flow cylinder head with multi-spherical combustion chambers and inclined inlet and exhaust valves. These advanced features combine with high energy electronic ignition and a high performance two-barrel, two-stage carburettor to give Meteor a sensible balance of strong performance with excellent fuel economy.

Lightweight valve construction means less power is needed to drive the engine—resulting in more power being available to the driving wheels. A newly designed lightweight cylinder block and re-designed valve mechanism help make Meteor engines surprisingly quiet. They are engineered for reliability and driveability.

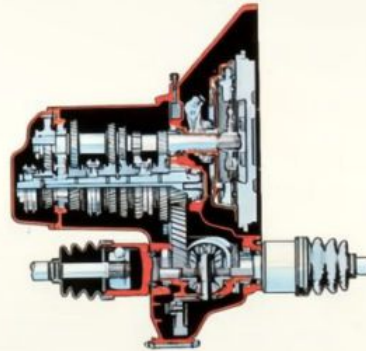
On Meteor Ghia sedans equipped with manual transmission you can now opt for fuel injection. This advanced fuel-injection system is multi-point and is controlled by a rapid processing digital computer. This results in smooth acceleration, superb durability and extra passing power.



Smooth shifting. Quiet running.

The smooth-shifting Meteor manual transmission has a re-designed linkage which incorporates a stabiliser rod to maintain a constant 'gear lever to transmission' relationship. Gear teeth have been re-designed for quiet running. Tapered roller bearings and a high-efficiency lubrication system all contribute to outstanding transmission durability.

Meteor's new automatic transmission is of the lock-up torque convertor type, designed to save fuel by eliminating the slippage which normally occurs in conventional automatics. In top gear, Meteor's torque convertor drives the car without slippage, which saves on fuel.

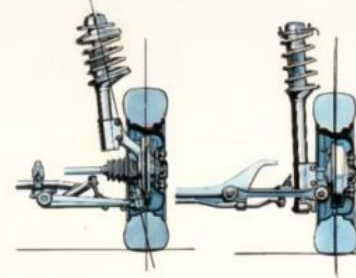


Longer wheelbase, wider track, improved suspension.

Meteor's wheelbase is now 35 mm longer than before. This results in better ride, improved stability, with a satisfyingly secure feeling on corners. Its fully independent suspension system includes struts/coil springs on the front and rear. Anti-swerve front suspension and self-stabilising rear suspension increase driving confidence.

Other features include:

- 20 mm wider rear track to enhance stability
- new design suspension bushes to provide additional comfort through extra quietness
- negative camber rear suspension to maximise tyre to road contact area.

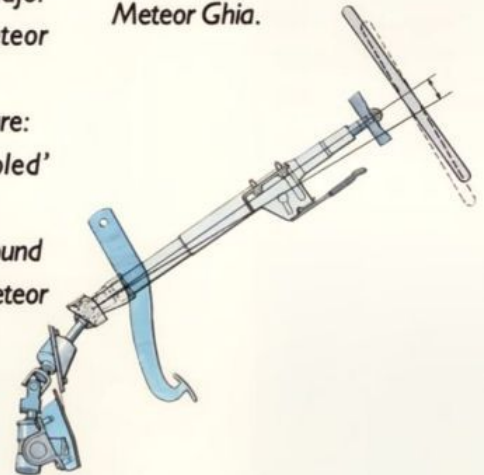


Power to stop.

Greater stopping power and service life are the major improvements in new Meteor braking system.

Features of this system are:

- new, large 'turbo cooled' ventilated front disc brakes
- self-adjusting brakes all round
- 4 wheel disc brakes on Meteor Ghia



- brake pressure proportioning valve to minimise rear wheel lock-up under varying conditions.



Precision steering.

Meteor maintains its reputation for responsiveness and good road feel through rack and pinion steering. For added driving ease, optional power steering is available with automatic transmission on Meteor Ghia.

About this brochure.

This brochure is designed to provide you with a general introduction to the Ford Products (including available optional equipment) referred to, and should be read in conjunction with the latest specification sheets. Because of changes in conditions and circumstances Ford® reserves the right, subject to all applicable laws, at any time, at their discretion, and without notice to discontinue or change the features, designs, materials, colours and other specifications and the prices of their products, and to either permanently or temporarily withdraw any such products from the market without incurring any liability to any prospective purchaser or purchaser.

The latest specification sheet should be referred to for information on the availability, ordering and use of optional equipment. Always consult an Authorised Ford Dealer for the latest information with respect to features, specifications, prices, optional equipment and availability before deciding to place an order.

*FORD MOTOR COMPANY
OF AUSTRALIA LIMITED
(Incorporated in Victoria)
FORD SALES COMPANY OF
AUSTRALIA LIMITED
(Incorporated in Victoria)

Registered offices:
1735 Sydney Road,
Campbellfield,
Victoria 3061.

Printed October 1985



Some specifications, features and equipment of early production Meteors will, or may, differ from those depicted and/or described in this brochure.

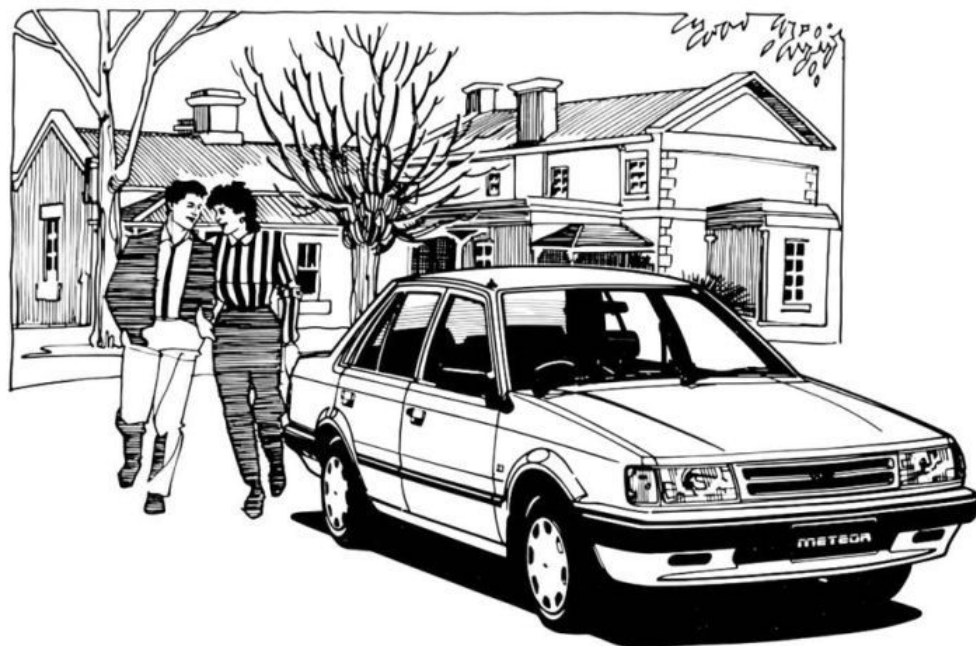


Ford Australia-We're moving with you.

F O R D M E T E O R



Ford Meteor Standard Equipment



Meteor GL Standard Features and Equipment

- 1.6 L OHC engine
- Electronic ignition
- 4 speed manual transmission
- Four wheel independent suspension
- Ventilated front disc brakes
- Rear drum brakes
- Front and rear stabilizer bars
- Constant gear ratio rack and pinion steering
- Automatic choke
- Front mudflaps
- Rear stoneguard
- 165/75 SR13 steel belt radial ply tyres
- 13" x 5" JJ steel wheels
- Full wheel covers - Argent finish
- Medium section black bodyside protection moulding with bright insert
- Black bumper with bright moulding
- Argent radiator grille
- Argent rear applique
- Laminated windscreen
- Tinted side and rear glass
- Warning lights: turn signal/hazard, high beam, oil pressure, alternator, brake fail, park brake, heated backlite on
- Gauges: speedometer, odometer, tripmeter, fuel gauge and water temperature gauge
- Halogen headlamps
- Illuminated cigarette lighter and front ashtray
- Heated backlite
- Panel light rheostat
- AM/FM stereo/cassette (2 speakers)
- Cloth seat trim
- Front and rear inertia reel seat belts
- Driver's seat cushion tilt
- Infinite position recliner for front seats
- 60/40 split fold down rear seat backrest
- 4 speed fan boosted ventilation
- Rear heater ducts
- RHS manual remote control exterior rear view mirror (safety breakaway type)
- 2 speed windscreen wipers plus intermittent setting
- Prismatic day/night interior rear view mirror
- Remote decklid and fuel filler releases
- Lockable glovebox
- Childproof rear door locks
- Quartz digital clock
- Large centre console
- Front and rear passenger assist grip and coat hooks
- Carpeted floor in passenger compartment
- Comprehensive toolkit and jack
- Vinyl sunvisors with mirror (passenger side) and ticket holder (drivers side)

Options

Transmission Options

- Automatic transmission (with lock up torque converter)
- 5 speed manual transmission

Other Options

- Airconditioning
- Metallic paint
- Prestige paint

Meteor Ghia As for Meteor GL, but with these different, upgraded or additional features:

- 5 speed manual transmission
- 4 wheel disc brakes (vented front, solid rear)
- 175/65 HR14 steel belt radial ply tyres
- 14" x 5.5" JJ steel wheels
- Full wheelcovers - bright finish
- Tachometer
- Rear mudflaps
- Power door locks
- Wide section black bodyside protection moulding with bright insert
- Hi-gloss black radiator grille with bright insert
- Bodyside pinstripe
- Hi-gloss black rear applique
- Warning lights: low fuel, low washer fluid, stop lamp out
- Headlamp on warning chime
- Ergonomically designed binnacle mounted switches
- Illuminated door and ignition locks
- Front door mounted courtesy lamps
- Interior lamp with twin spot lamps
- AM/FM radio/cassette (4 speakers)
- Long park lamp
- Velour cloth seat material
- Driver's seat lift and lumbar support adjustment
- Driver and passenger seat back pockets
- Driver's left footrest
- Passenger seat storage tray
- Rear seat fold down centre armrest
- Moulded door trim covered with velour cloth material
- Moulded door armrests - front and rear
- Cloth headlining and sunvisors
- Electric remote control LHS & RHS exterior rear view mirrors (body colour)
- Tilt adjustable steering column
- Luxury soft feel steering wheel
- Rear window wiper/washer
- Dual horns

Engine/Transmission Options

- 1.6 L Fuel Injection (5 speed manual only)
- 3 Speed automatic transmission (with lock up torque converter)

Other Options

- Air conditioning
- Power steering (auto trans only)
- Metallic paint (no cost option)
- Prestige paint (no cost option)



Ford Australia-We're moving with you.

FORD METEOR



Specifications

FORD METEOR

Engine	1.6 litre	1.6 litre EFI
Bore & Stroke mm	78 x 83.6	78 x 83.6
Cylinder head	Aluminium alloy	Aluminium alloy
Engine Block	Cast iron	Cast iron
Displacement cc	1591	1591
Compression Ratio	9.5:1	9.5:1
Fuel (Octane Rating)	96	96
Max Power Output DIN kw/rpm	53/5000	61/5000
Max Torque Nm/rpm	121/3000	122/2500

Suspension

Front	<ul style="list-style-type: none"> MacPherson Struts Telescopic shock absorbers Inclined variable rate coil springs Negative offset geometry 	Rear	<ul style="list-style-type: none"> Independent struts Telescopic shock absorbers Parallel coil springs Stabiliser bar Self stabilising geometry
-------	--	------	--

Dimensions

General	Metric		
Curb weight	870 kgs		
Luggage capacity	353 m³		
Tyre size			
GL	165/75SR13		
Ghia	175/65HR14		
Fuel tank capacity	45.0 litres		
Min. turning diameter	9.4m		
Exterior		Interior	
Overall length	4195mm	Front headroom	974mm
Front overhang	800mm	Front legroom	1054mm
Wheelbase	2400mm	Front shoulder room	1341mm
Rear overhang	995mm	Front hiproom	1341mm
Overall height	1390mm	Rear headroom	950mm
Overall width	1645mm	Rear legroom	882mm
Front track	1390mm	Rear shoulder room	1344mm
Rear track	1415mm		
Ground clearance	150mm		

Transmissions and Ratios	1.6 Litre 4-speed manual	1.6 Litre 5-speed manual	1.6 Litre 5-speed manual EFI	1.6 Litre 3-speed automatic
1st Gear Ratio	3.416	3.416	3.153	2.841
2nd Gear Ratio	1.842	1.842	1.842	1.541
3rd Gear Ratio	1.290	1.290	1.290	1.000
4th Gear Ratio	0.918	0.918	0.918	—
5th Gear Ratio	—	0.775	0.775	—
Reverse Ratio	3.214	3.214	3.214	2.400
Final Drive Ratio				
Manual Transmission	4.105	3.850	—	—
Automatic Transmission	—	—	4.105	3.631

Fuel Economy Data

This data is based upon AS2077 tests

	1.6 litre 4-speed manual	1.6 litre 5-speed manual	1.6 litre 3-speed automatic	1.6 litre 5-speed manual EFI
CITY				
L/100km	9.0	8.5	9.0	8.5
mpg	31.4	33.2	31.4	33.2
HIGHWAY				
L/100km	6.2	6.0	7.0	6.2
mpg	45.6	47.1	40.4	45.6

These figures are provided to assist you in comparing the fuel consumption of Laser with other vehicles. The actual fuel consumption you achieve will depend, however, on many factors, including your driving habits, the prevailing conditions and your vehicle's equipment condition and use.

Options

Optional Equipment (Options are at extra cost unless otherwise stated)

Convenience	Notes	GL	Ghia
Power Steering	(a)	N/A	OPT
Integrated air conditioning		OPT	OPT
Metallic paint		OPT	NCO
Prestige paint		OPT	NCO

Engine/Transmission Combinations

1.6 litre		
4-speed manual	STD	N/A
5-speed manual	OPT	STD
3-speed automatic	OPT	OPT

STD - Standard equipment. OPT - Optional at extra cost. NCO - No cost option.
N/A - Not available.

Notes

(a) Available only with automatic transmission.

About this specification Sheet. This sheet is designed to provide you with selected specification data for the Ford Products which have been described in a general way in the relevant brochure. Because of changes in conditions and circumstances Ford* reserves the right, subject to all applicable laws, at any time, at their discretion, and without notice to discontinue or change the features, designs, materials, colours and other specifications and the prices of their products, and to either permanently or temporarily withdraw any such products from the market without incurring any liability to any prospective purchaser or purchaser. Because of variations which occur in manufactured products, all capacities, measurements, dimensions and weights quoted in the relevant brochure and this specification sheet should be taken as approximate only. Always consult an Authorised Ford Dealer for the latest information with respect to features, specifications, prices, optional equipment and availability before deciding to place an order.

*FORD MOTOR COMPANY OF AUSTRALIA LIMITED

(Incorporated in Victoria)

FORD SALES COMPANY OF AUSTRALIA LIMITED

(Incorporated in Victoria)

Registered offices

1735 SYDNEY ROAD, CAMPBELLFIELD, VICTORIA, 3061



Ford Australia-We're moving with you.

Printed October 1985

