

THE HOLDEN

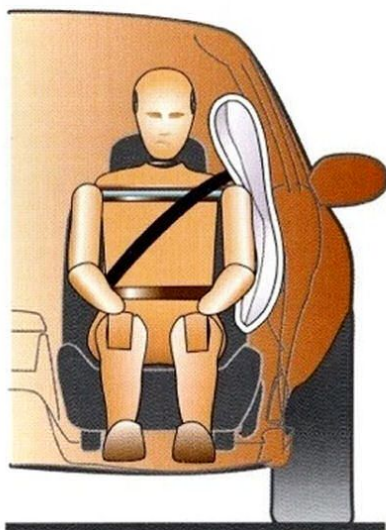
# COMMODORE





# The world-class family car that's setting new standards.

Engineered from the ground up in Australia, the latest Holden Commodore introduces an array of brilliant new features that add up to a world-class family car.



For the first time in an Australian built car, Holden Commodore now offers the option of side impact airbags for front seat passengers.\*

While the Crash Pulse Optimised body design with enlarged, crimped front side rails to absorb energy on impact, and a stronger safety cell helps preserve occupant space.

The rigid body, combined with a wide track and longer wheelbase, gives you a firmer feel for the road and better cornering stability.



Independent Rear Suspension (IRS), a driver's airbag, front seat belt pre-tensioners, driver's electric seat height and cushion tilt adjustment, and a 6 function trip computer are all standard, proving yet again that Commodore is superb value for money. On the inside, there's



more interior space with increases in leg room, front and rear. Commodore wagon has the largest rear carrying capacity of any Australian built wagon. And with the added advantage of IRS, it handles more like a sedan.

While the Commodore Acclaim continues to set the standard for safety features in Australian family cars with new Electronic Traction Control

(ETC) in addition to the Bosch Anti-lock Braking System, the Supplemental Restraint System (SRS) and IRS. The thrill of driving has taken a huge leap forward with the wild styling of S and SS, and the option of an exciting Supercharged V6. The 5 litre V8, standard in SS, now has class leading power of 179 kW.

World-class technology, style and driving pleasure. Holden Commodore gives you the driving edge.

For more information see your nearest Holden Dealer, call 1800 035 464 for a brochure or visit <http://www.holden.com.au>



*Official Automotive Partner*