

The
05 THUNDERBIRD



Built for life in Canada

The 50th Anniversary of Thunderbird

It is and always has been a classic, a genuine automotive icon. The 2005 Thunderbird marks its 50th anniversary as a continuing standard for luxurious design, heart-stirring performance and modern touring comfort.



Thunderbird shown in Medium Steel Blue Clearcoat Metallic with optional wheels.

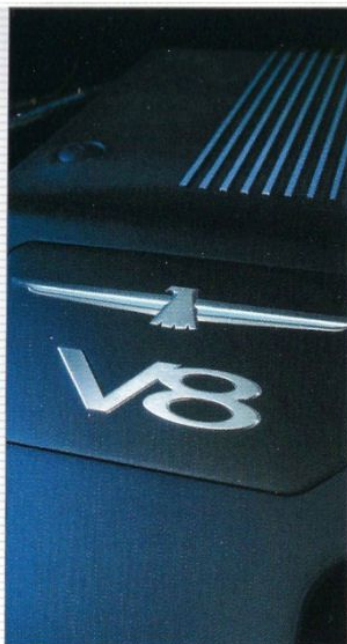
Let it Set You Free

Let the spirit of the 2005 Thunderbird carry you places you've never been before. It is elegance and power, a dashing roadster one moment, a grand touring automobile the next. A true performer - wrapped in luxury and enveloped in legend - that re-ignites the pleasure and excitement of driving.



Turn Heads – Everywhere

This year, make a statement with one of two exciting new additions to Thunderbird's colour pallet – Bronze or Medium Steel Blue. Your new 2005 Thunderbird also carries an exclusive 50th Anniversary chevron on both fenders to establish it as a collector's edition.



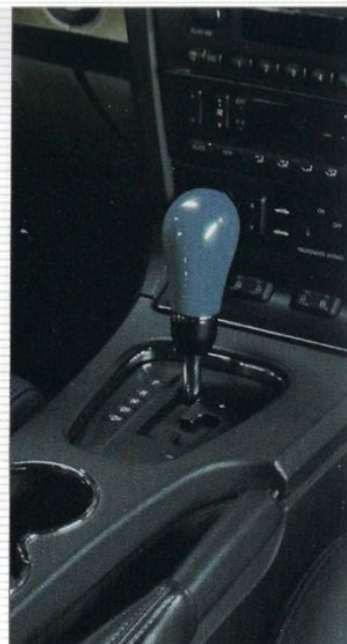
Power and Control

Power to straighten every road comes from Thunderbird's 3.9L 32-valve aluminum V8 engine. With 280 horsepower, variable cam timing and electronic throttle control, there's never any doubt who's in charge when you're on the road.



Where the Sizzle Hits the Road

Thunderbird's standard 17" chromed aluminum wheels are designed to dazzle. And, as an option, you can choose 17" micro-machined aluminum wheels at no extra charge.



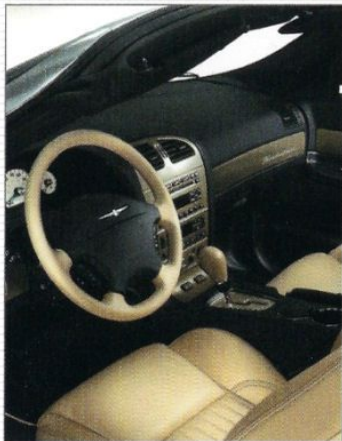
Put Your Heart in Overdrive

Show your roadster side with Thunderbird's optional SelectShift® transmission. Keep the shifter to the left and it's a smooth five-speed automatic. Move it to the right and you select the upshifts and downshifts, whenever your heart desires.



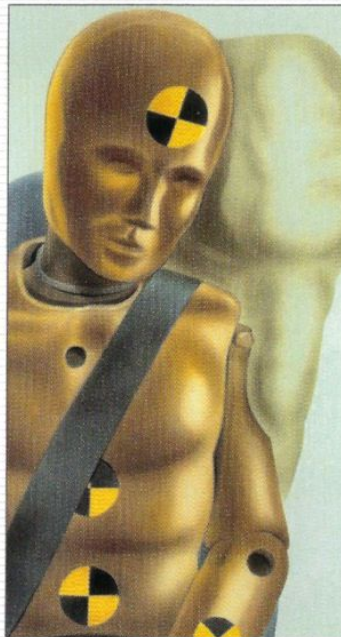
Stop – and Go – with Confidence

A standard four-wheel disc braking system with ABS automatically senses wheel lockup to help prevent skidding. This combines with standard all-speed traction control – to help a slipping drive-wheel regain traction – to give you greater driving control and confidence.



Leather-Clad Luxury

Envelop yourself in the classic luxury of Thunderbird's heated, leather-trimmed bucket seats, featuring six-way power adjustments for the driver and two-way power adjustments for the passenger. Of course, the steering wheel – with fingertip audio and speed controls – is wrapped in leather, too.



All-Around Air Bag Protection

Standard front and side air bags help protect you and your companion in a variety of frontal and side-impact crash situations. And for those times when a youngster is at your side, there's a standard passenger air bag deactivation switch.



Buy it for the Sound Alone

Thunderbird's standard Audiophile Sound System includes an in-dash six-disc CD changer and 180 watts of power. With rich, eight-speaker sound – including two subwoofers – it delivers a soundtrack for every road trip.

Specifications

DIMENSIONS mm (in.)

Wheelbase	2723 (107.2)	Turning diameter <i>Curb-to-curb, m (ft.)</i>	10.7 (35.2)
Length	4732 (186.3)	Head room – Convertible	945 (37.2)
Height	1323 (52.1)	– Convertible with Removable Top	942 (37.1)
Width	1829 (72.0)	Shoulder room	1455 (57.3)
Tread – Front	1537 (60.5)	Hip room	1365 (53.7)
– Rear	1529 (60.2)	Leg room	1085 (42.7)

WEIGHTS/CAPACITIES

Base model curb weight <i>kg (lb.)</i>	
– Convertible	1715 (3781)
– Convertible with Removable Top	1755 (3869)
Fuel tank <i>litres (U.S. gal.)</i>	68 (18.0)
Seating	2
Trunk capacity <i>litres (cu. ft.)</i>	195 (6.9)

POWERTRAIN

Engine	3.9L 32-valve DOHC V8
Horsepower <i>SAE net</i>	280 @ 6000 rpm
Torque <i>SAE net lb.-ft.</i>	286 @ 4000 rpm
Fuel injection system	Sequential multi-port electronic
Exhaust system	Dual with bright exhaust tips
Transmission – Standard	5-speed electronic automatic with overdrive
– Optional	5-speed SelectShift® electronic automatic with manual upshift/downshift feature
Rear axle ratio	3.58:1

CHASSIS

Brakes	Power 4-wheel ventilated discs with 4-wheel anti-lock braking system (ABS) and electronic brakeforce distribution (EBD)
Steering	Speed-sensitive, variable-assist power rack-and-pinion
Traction control	All-speed, using ABS and throttle intervention
Suspension – Front	Independent short- and long-arm (SLA) with coil springs and stabilizer bar
– Rear	Independent short- and long-arm (SLA) with coil springs and stabilizer bar
Tires	P235/50VR17 BSW all-season
Wheels – Standard	17" 7-spoke chromed aluminum
– Optional	17" 16-spoke micro-machined aluminum

SERIES FEATURES

EXTERIOR

Alarm system	Perimeter
Convertible top	Power retractable with semi-soft foldable boot
Fender chevron	50 th Anniversary badge, left and right front fenders
Glass	Solar-tinted with heated backlite
Mirrors	Dual, power
Mouldings	Body-colour, rocker
Remote keyless entry system	Including decklid release and panic alarm
Windshield wipers	2-speed variable interval

REMOVABLE TOP COLOURS

Bronze Clearcoat Metallic
Evening Black Clearcoat
Medium Steel Blue Clearcoat Metallic
Performance White Clearcoat
Platinum Silver Clearcoat Metallic
Torch Red Clearcoat

EXTERIOR COLOURS

Bronze Clearcoat Metallic
Evening Black Clearcoat
Medium Steel Blue Clearcoat Metallic
Platinum Silver Clearcoat Metallic
Torch Red Clearcoat

INTERIOR

Air bags	<ul style="list-style-type: none"> • Second Generation front air bags with manual passenger-side deactivation switch • Seatback-mounted side-impact air bags
Anti-theft system	SecuriLock®
Audio system	Audiophile AM/FM stereo with in-dash 6-disc CD changer, 180-watt RMS amplifier and 8 speakers, including dual subwoofers
Climate control	Dual-zone with automatic temperature control
Console	Centre floor console with leather-wrapped armrest
Cupholders	Dual, front
Decklid release	Power, with auxiliary mechanical release behind driver seat
Door locks	Power with autolock and SmartLock™ functions
Floor covering	Deluxe carpet with carpeted floor mats
HomeLink®	Universal garage door opener
Instrument panel	Analog cluster with tachometer and trip odometer
Lighting	<ul style="list-style-type: none"> • Illuminated entry with theatre dimming • Courtesy lamps • Dual map lights
Mirror	Day/night rearview
Removable top	Sheet Molded Composite top with heated backlite, wheeled storage cart and fitted breathable/water-resistant cover
Safety belts	3-point driver and passenger safety belts with pretensioners and energy management retractors
Seating	<ul style="list-style-type: none"> • Heated leather bucket seats • 6-way power driver seat with manual lumbar adjuster • 2-way power passenger seat with LATCH child safety seat anchor points • 2-way adjustable head restraints
Steering wheel	<ul style="list-style-type: none"> • Leather-wrapped with audio and speed controls • Power tilting/telescoping steering column
Storage	<ul style="list-style-type: none"> • Floor console • Door-trim and seatback map pockets • Locking glove box • Rear storage shelf
Visors	Cloth-covered with covered vanity mirrors
Windows	Power, with driver side express-down and side drop-glass function

OPTIONAL FEATURES

Black Accent Package	Adds high-gloss black accent to shift knob and top of steering wheel
Full Interior Colour Accent Package	Adds Torch Red accent colour to seat insert, lower instrument panel, lower console, door trim insert, shift knob and top of steering wheel
Light Sand Appearance Package	Adds Light Sand accent colour to convertible top, semi-soft boot, full seats (with contrasting black stitching), top of steering wheel and floor mat edging, bronze metallic shifter bezel and door scuff plates
Partial Interior Colour Accent Package <i>(with Torch Red or Medium Steel Blue interior)</i>	Adds appropriate (Torch Red or Medium Steel Blue) accent colour to seat inserts, shift knob and top of steering wheel
SelectShift® transmission	5-speed electronic automatic with manual upshift/downshift feature
Wheels	17" 16-spoke micro-machined aluminum

WHEELS



17" chromed aluminum
(Standard)



17" micro-machined aluminum
(No-charge Option)

INTERIOR COLOURS

Black Ink

Light Sand

Medium Steel Blue

Torch Red

EXTERIOR COLOURS

No Interior Accent Package /

Black Accent Package

Bronze Clearcoat Metallic

Evening Black Clearcoat

Medium Steel Blue Clearcoat Metallic

Platinum Silver Clearcoat Metallic

Torch Red Clearcoat

Full Interior Accent Package

- Evening Black Clearcoat

- Torch Red Clearcoat

Light Sand Interior Accent Package

- Bronze Clearcoat Metallic

- Evening Black Clearcoat

- Medium Steel Blue Clearcoat Metallic

- Platinum Silver Clearcoat Metallic

- Torch Red Clearcoat

Partial Interior Accent Package

- Evening Black Clearcoat

- Medium Steel Blue Clearcoat Metallic

- Platinum Silver Clearcoat Metallic

- Torch Red Clearcoat



Black Ink



Light Sand



Medium Steel Blue



Torch Red

INTERIOR PACKAGES



Black Accent



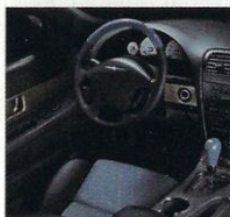
Full Interior Colour Accent
– Evening Black



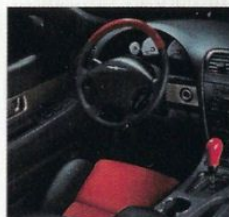
Full Interior Colour Accent
– Torch Red



Light Sand Appearance

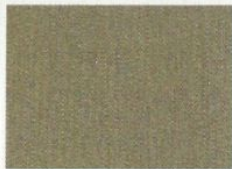


Partial Interior Colour Accent
– Medium Steel Blue



Partial Interior Colour Accent
– Torch Red

EXTERIOR COLOURS



Bronze Clearcoat Metallic



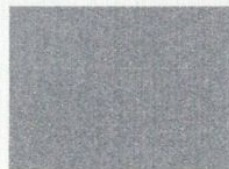
Evening Black Clearcoat



Medium Steel Blue
Clearcoat Metallic



Performance White Clearcoat
(Convertible Top Only)



Platinum Silver
Clearcoat Metallic



Torch Red Clearcoat

OUR COMMITMENT TO YOU

PEACE-OF-MIND PROTECTION FOR YOUR NEW 2005 FORD VEHICLE

New-Vehicle Limited Warranty

3 years / 60,000 km

Powertrain Warranty

5 years / 100,000 km

Corrosion Warranty

5 years / Unlimited distance

Roadside Assistance at No Additional Charge

3 years / 60,000 km

Certain conditions apply. Go to ford.ca or ask your local Ford of Canada Dealer for more information on these warranties and coverages.



For more information about Ford of Canada and Ford products, visit our website.

PROMPT, COURTEOUS ANSWERS TO YOUR QUESTIONS

Please call our Customer Relationship Centre for any additional information you require on Ford vehicles, warranties, programs or other matters.

Ford Customer Relationship Centre: 1-800-565-FORD (3673)



CREDIT OPTIONS TO SUIT YOUR NEEDS

Ford Credit is a full-service automobile finance company offering a wide variety of financing and leasing programs to every qualified buyer.

Ford Credit Customer Service Centre: 1-877-636-7346

OUR COMMITMENT TO THE COMMUNITY

Ford of Canada and its Dealers are proud to support the following community initiatives across Canada.



Canadian Breast Cancer Foundation



SMARTRISK™

Competitive comparisons are based on publicly available information and Ford data at the time of printing. Some features discussed may be optional. Vehicles shown may contain optional equipment. Features shown may be offered only in combination with other options or subject to additional ordering requirements or limitations. Following publication of this catalogue, certain changes in standard equipment, options and the like, or product delays, may have occurred which would not be included in these pages. Your Ford of Canada Dealer is your best source for up-to-date information. Ford Motor Company of Canada, Limited, reserves the right to change product specifications at any time without incurring obligations. This catalogue is printed using vegetable inks on recycled paper containing 10% de-inked post-consumer materials. Colours may not be exactly as illustrated due to restrictions of the printing process. Please see your sales consultant for specific colour and model availability.