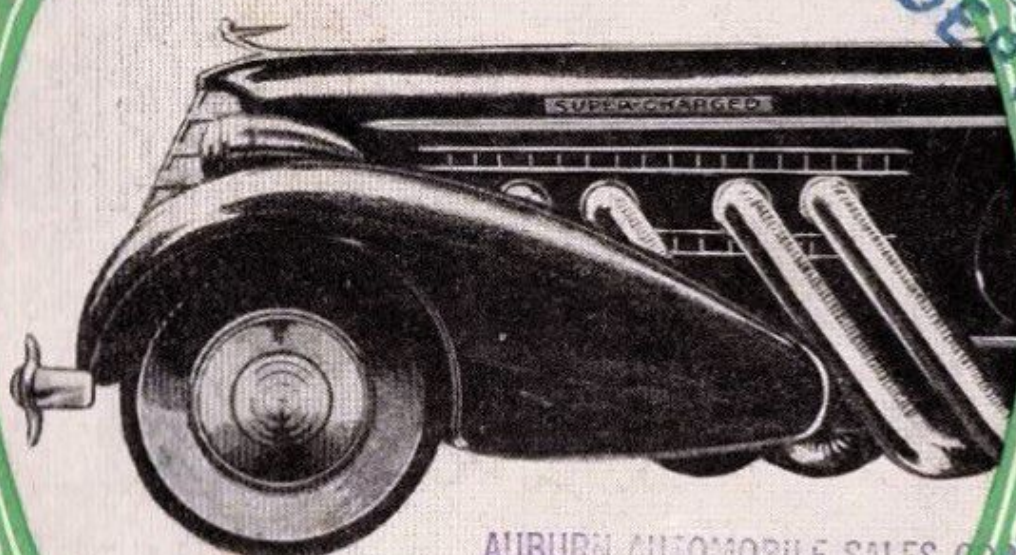


NEW 1936

Super-Charged
AUBURN

SELZALSKA
INTERNATIONAL PICTURES, INC.
RESEARCH DEPT.



AUBURN AUTOMOBILE SALES CORP.
3443 WILSHIRE BLVD.
LOS ANGELES, CALIFORNIA



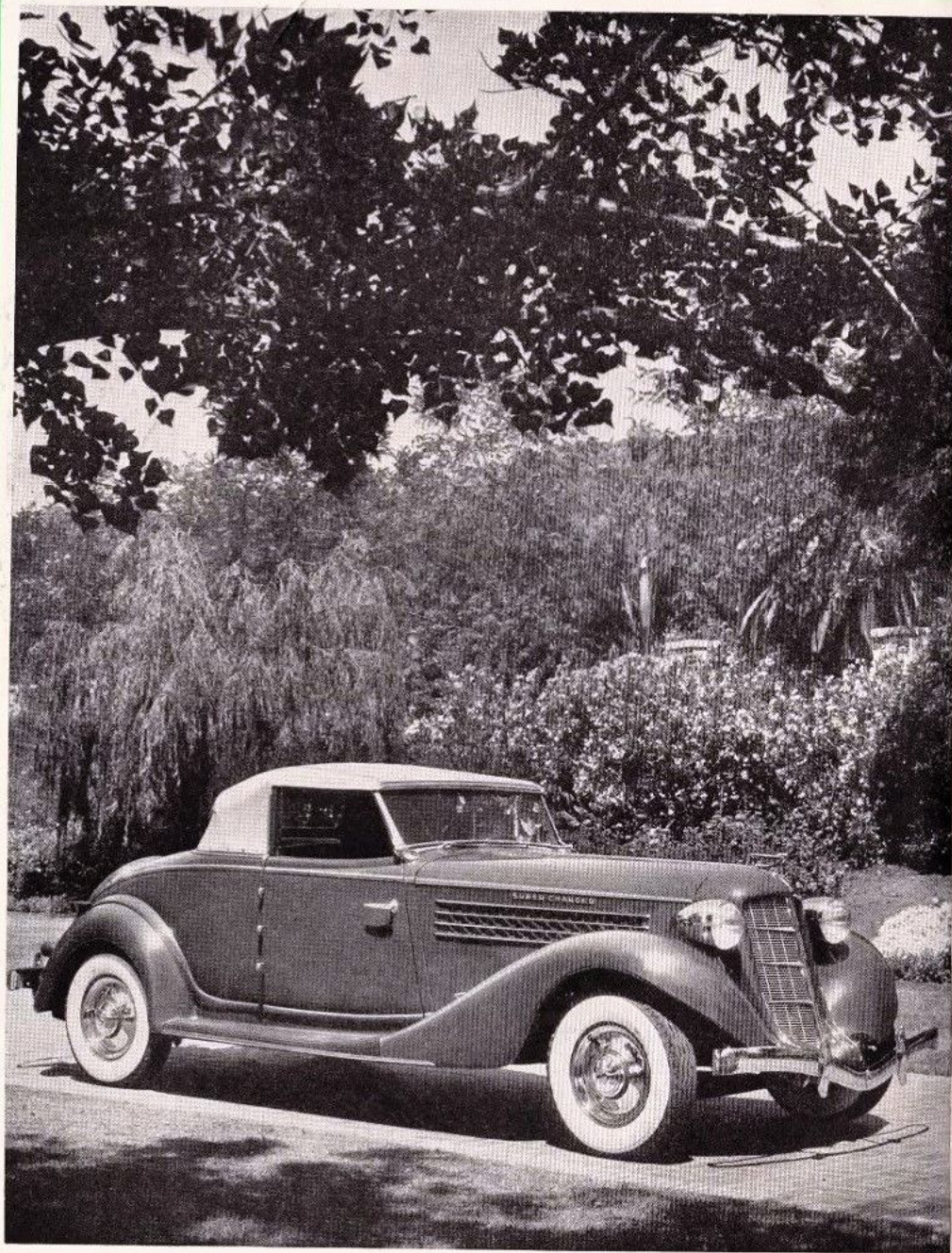


Smart Super-Charged Coupe Model for personal, or business and professional use. Comfortable rumble seat or roomy luggage compartment.

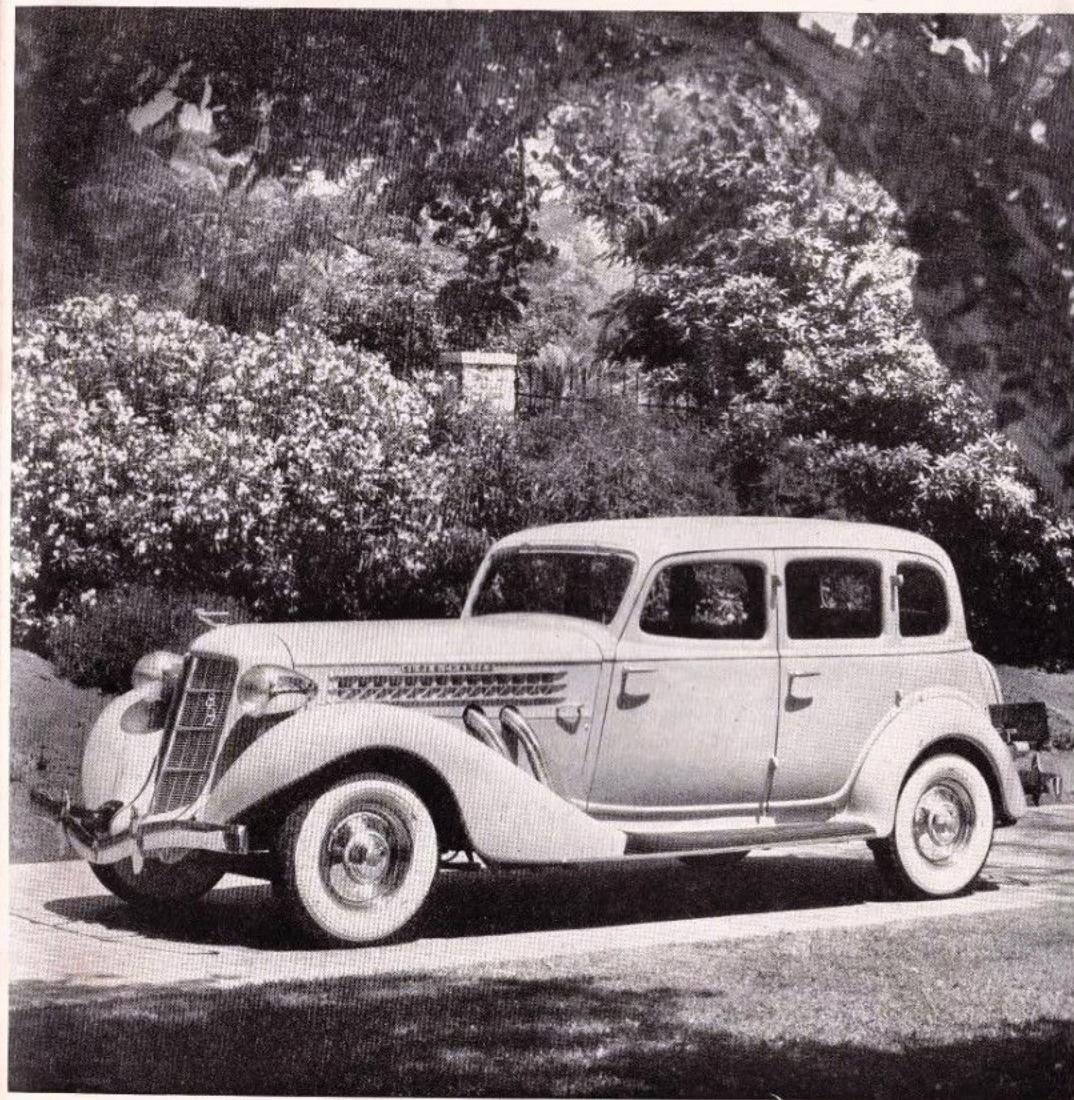


Swanky Super-Charged Speedster. Racy, torpedo type design, with outside exhaust pipes of polished stainless steel. Disappearing, roadster type top.

YOU ARE INVITED TO INSPECT AND DRIVE AN EXACT DUPLICATE
OF THE STOCK AUBURN SUPER-CHARGED SPEEDSTER THAT
BROKE 70 SPEED RECORDS. WORLD'S FASTEST STOCK CAR.

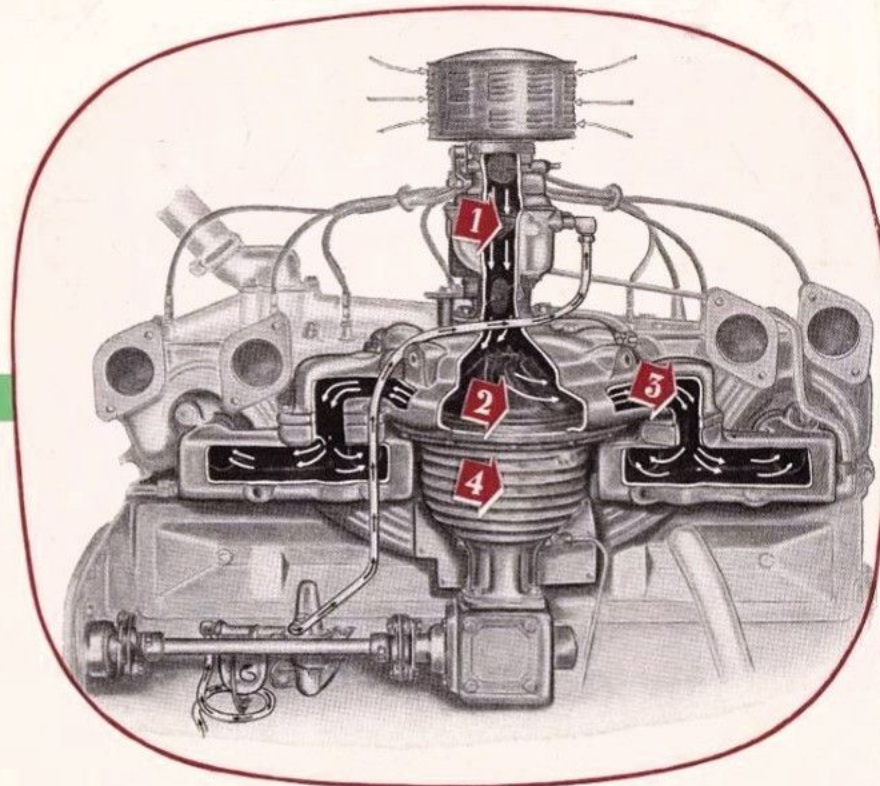


Smart Convertible Cabriolet. May be completely open or closed. Plenty of room for three in front; rumble seat for additional passengers.



Roomy 4-Door Super-Charged Sedan that comfortably seats six. Luxurious interiors. Also available in 2-door, 5-passenger Brougham model.

EXPLAINING THE AUBURN SUPER-CHARGER



- 1 CARBURETOR:** Air is drawn through carburetor where it is mixed with gasoline—then mixture goes on to Super-Charger.
- 2 SUPER-CHARGER:** This is the Super-Charger itself, where mixture from carburetor is whirled around at high speed. In addition to being thoroughly mixed for better burning, it is thrown outward with force, or pressure into the intake manifold.
- 3 INTAKE MANIFOLD TO CYLINDERS:** The gas mixture, now under pressure, is **forced** to each cylinder. Naturally it goes into the cylinder faster under pressure than if it were just following the suction of the piston on its down-stroke. The result is, the cylinders are not only fully charged with explosive gas, but Super-Charged—and that means super-power.
- 4 PERFECTED MECHANISM:** The necessary rotor speed (six times engine speed or as much as 24,000 revolutions per minute) is obtained by steel rollers instead of ordinary gears. No noise, or rapid wear—just smooth rolling contact.

AUBURN AUTOMOBILE COMPANY, AUBURN, INDIANA

Super-Charged Convertible Phaeton Sedan. Completely open or closed car, upholstered in rich leather. King of the Highway.

SPECIFICATIONS 852

Auburn Super-Charged Models have a strong appeal for men and women who want cars of individual design, exceptional speed and sparkling performance. For example, at 60 miles an hour, the 150 H.P. Super-Charged Lycoming Engine is merely loafing. There is a tremendous reserve of power, instantly available for emergencies, adding immeasurably to your Safety!

On the Salt Desert of Utah a stock Super-Charged Auburn Speedster drove for five miles at over 104 miles an hour, and then raced on to break 69 other speed records. Here is unimpeachable proof of Auburn's stamina, endurance and expert engineering.

Following are brief Specifications of the Auburn Super-Charged Models:

AXLES: Front. Drop forged I-beam. Rear. Dual-Ratio type.

BODIES: Unitype welded steel construction. Mounted directly on chassis frame. All panels heavily insulated.

BRAKES: Hydraulic internal expanding on all four wheels. Parking brakes operate mechanically on rear service brakes. Brake drums have steel shell with cast nickel iron liner, centrifuse type.

CARBURETOR: Stromberg down draft, 1 inch Duplex. Automatic heat adjustment and large air cleaner and silencer.

COOLING: New type packless water pump with metallic seals. Copper tube running entire length of motor block spraying constant stream of cool water around valve seats and valve ports.

ENGINE: Lycoming Straight Eight. Super-Charged. 3 1/16" x 4 3/4". 280 cu. in. displacement. 150 Horse Power. Aluminum cylinder head. Engine mounted at four points on rubber air-cushion mountings.

FRAME: Side Rails 6" deep with 2 1/2" flanges. Box section construction with X-plus-A bracing.

GASOLINE TANK: 20 gallon capacity located at rear of car.

GENERATOR: New high output air cooled type providing extremely high charging rate.

HORSE POWER: 30.01 rated. Actual 150 at 3600 R.P.M.

LUBRICATION-ENGINE: Full pressure to main bearings, connecting rod and cam shaft bearings. Oil pressure gauge on instrument panel. Oil level bayonet in crankcase.

SHOCK ABSORBERS: Four, Lovejoy double acting hydraulic, lever type.

SPRINGS: Semi-elliptic front and rear of silico manganese steel. Front 42" long 2" wide. Rear 56 3/4" long 2" wide. Enclosed in metal covers. Rubber bushed shackles.

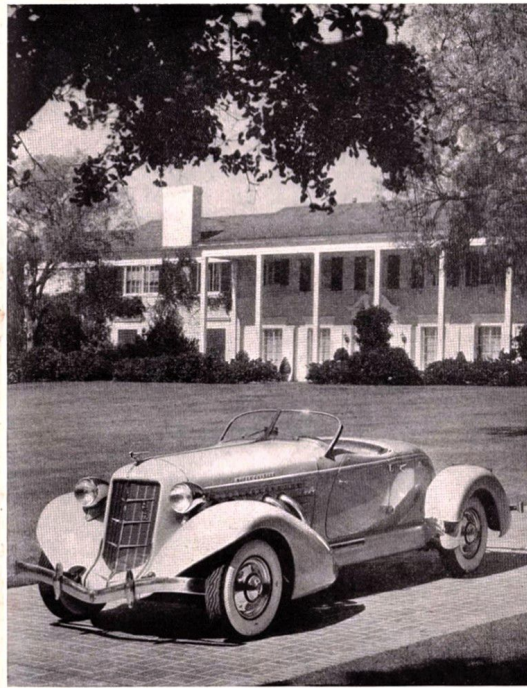
STEERING GEAR: Ross full-railer cam and lever variable ratio.

TREAD: 59 inches front. 62 inches rear.

WHEELBASE: 127 inches.



Smart Super-Charged Coupe Model for personal, or business and professional use. Comfortable rumble seat or roomy luggage compartment.



Swanky Super-Charged Speedster. Racy, torpedo type design, with outside exhaust pipes of polished stainless steel. Disappearing, roadster type top.

SPECIFICATIONS 852

Auburn Super-Charged Models have a strong appeal for men and women who want cars of individual design, exceptional speed and sparkling performance. For example, at 60 miles an hour, the 150 H.P. Super-Charged Lycoming Engine is merely loading. There is a tremendous reserve of power, instantly available for emergencies, adding immeasurably to your Safety!

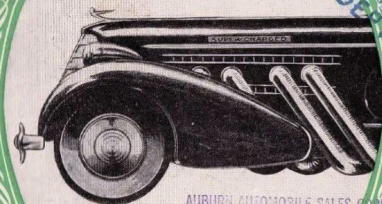
On the Salt Desert of Utah a stock Super-Charged Auburn Speedster drove for five miles at over 104 miles an hour, and then raced on to break 69 other speed records. Here is unimpeachable proof of Auburn's stamina, endurance and expert engineering.

Following are brief Specifications of the Auburn Super-Charged Models:

- AXLES:** Front Drop forged I-beam. Rear Dual-Ratio type.
- BODIES:** Unit-type welded steel construction. Mounted directly on chassis frame. All panels heavily insulated.
- BRAKES:** Hydraulic internal expanding on all four wheels. Parking brakes operate mechanically on rear service brakes. Brake drums have steel shell with cast nickel iron liner, centrifuse type.
- CARBURETOR:** Stromberg down draft, 1 inch Duplex. Automatic heat adjustment and large air cleaner and silencer.
- COOLING:** New type packless water pump with metallic seals. Copper tube running entire length of motor block spraying constant stream of cool water around valve seats and valve ports.
- ENGINE:** Lycoming Straight Eight. Super-Charged. 3 1/16" x 4 1/4". 280 cu. in. displacement. 150 Horse Power. Aluminum cylinder head. Engine mounted at four points on rubber air-cushion mountings.
- FRAME:** Side Rails 6" deep with 2 1/2" flanges. Box section construction with X-plus-A bracing.
- GASOLINE TANK:** 20 gallon capacity located at rear of car.
- GENERATOR:** New high output air cooled type providing extremely high charging rate.
- HORSE POWER:** 30.01 rated. Actual 150 at 3600 R.P.M.
- LUBRICATION-ENGINE:** Full pressure to main bearings, connecting rod and cam shaft bearings. Oil pressure gauge on instrument panel. Oil level baryonet in crankcase.
- SHOCK ABSORBERS:** Four, Lovejoy "double" acting hydraulic, lever type.
- SPRINGS:** Semi-elliptic front and rear of silico manganese steel. Front 42" long 2" wide. Rear 56 1/4" long 2" wide. Enclosed in metal covers. Rubber bushed shackles.
- STEERING GEAR:** Ross full-railer cam and lever variable ratio.
- TREAD:** 59 inches front. 62 inches rear.
- WHEELBASE:** 127 inches.

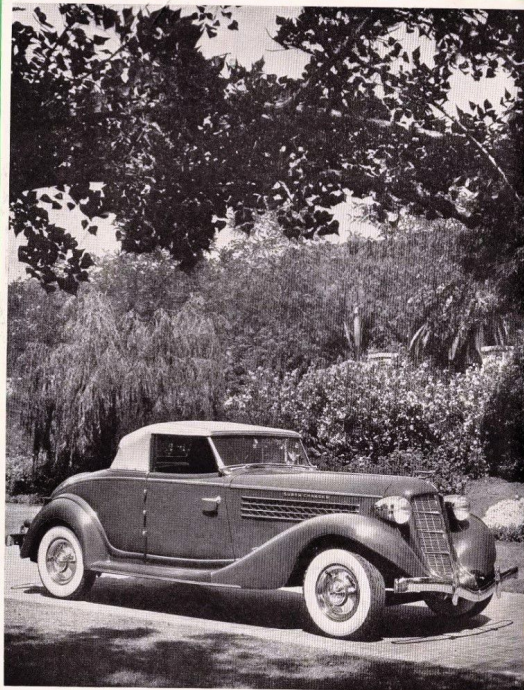
NEW 1936

Super-Charged AUBURN

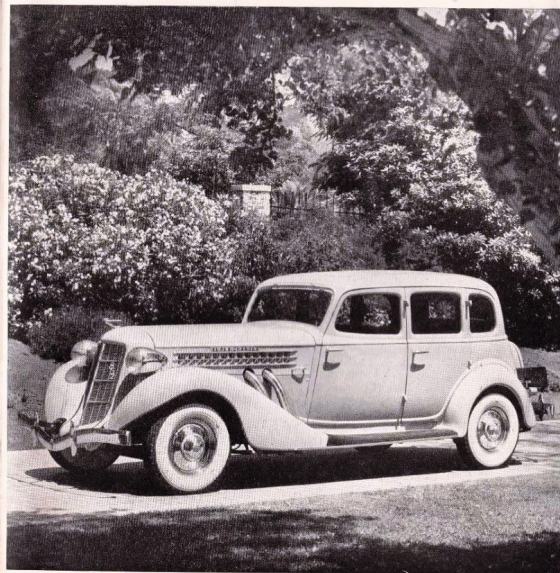


AUBURN AUTOMOBILE SALES CO.
3443 WILSHIRE BLVD.
LOS ANGELES, CALIF.





Smart Convertible Cabriolet. May be completely open or closed. Plenty of room for three in front; rumble seat for additional passengers.



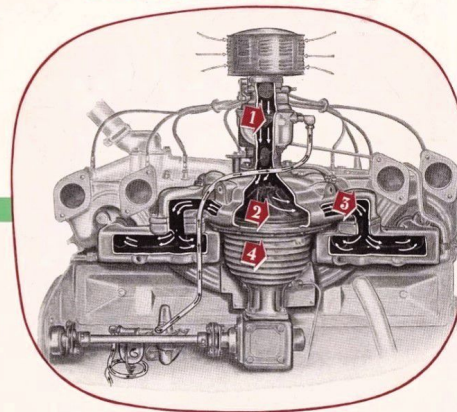
Roomy 4-Door Super-Charged Sedan that comfortably seats six. Luxurious interiors. Also available in 2-door, 5-passenger Brougham model.



Super-Charged Convertible Phaeton Sedan. Completely open or closed car, upholstered in rich leather. King of the Highway.

YOU ARE INVITED TO INSPECT AND DRIVE AN EXACT DUPLICATE
OF THE STOCK AUBURN SUPER-CHARGED SPEEDSTER THAT
BROKE 70 SPEED RECORDS. WORLD'S FASTEST STOCK CAR.

EXPLAINING THE AUBURN SUPER-CHARGER



- 1 CARBURETOR:** Air is drawn through carburetor where it is mixed with gasoline—then mixture goes on to Super-Charger.
- 2 SUPER-CHARGER:** This is the Super-Charger itself, where mixture from carburetor is whirled around at high speed. In addition to being thoroughly mixed for better burning, it is thrown outward with force, or pressure into the intake manifold.
- 3 INTAKE MANIFOLD TO CYLINDERS:** The gas mixture, now under pressure, is forced to each cylinder. Naturally it goes into the cylinder faster under pressure than if it were just following the suction of the piston on its down-stroke. The result is, the cylinders are not only fully charged with explosive gas, but Super-Charged—and that means super-power.
- 4 PERFECTED MECHANISM:** The necessary rotor speed (six times engine speed or as much as 24,000 revolutions per minute) is obtained by steel rollers instead of ordinary gears. No noise, or rapid wear—just smooth rolling contact.

AUBURN AUTOMOBILE COMPANY, AUBURN, INDIANA