

The background of the advertisement features a white line-art outline of a 1935 Ford V8 sedan on a black background. The car is shown from a front-three-quarter perspective, with its front wheel and headlight clearly visible. The text "Ford V8" is written in a large, stylized, green script font across the top of the image.

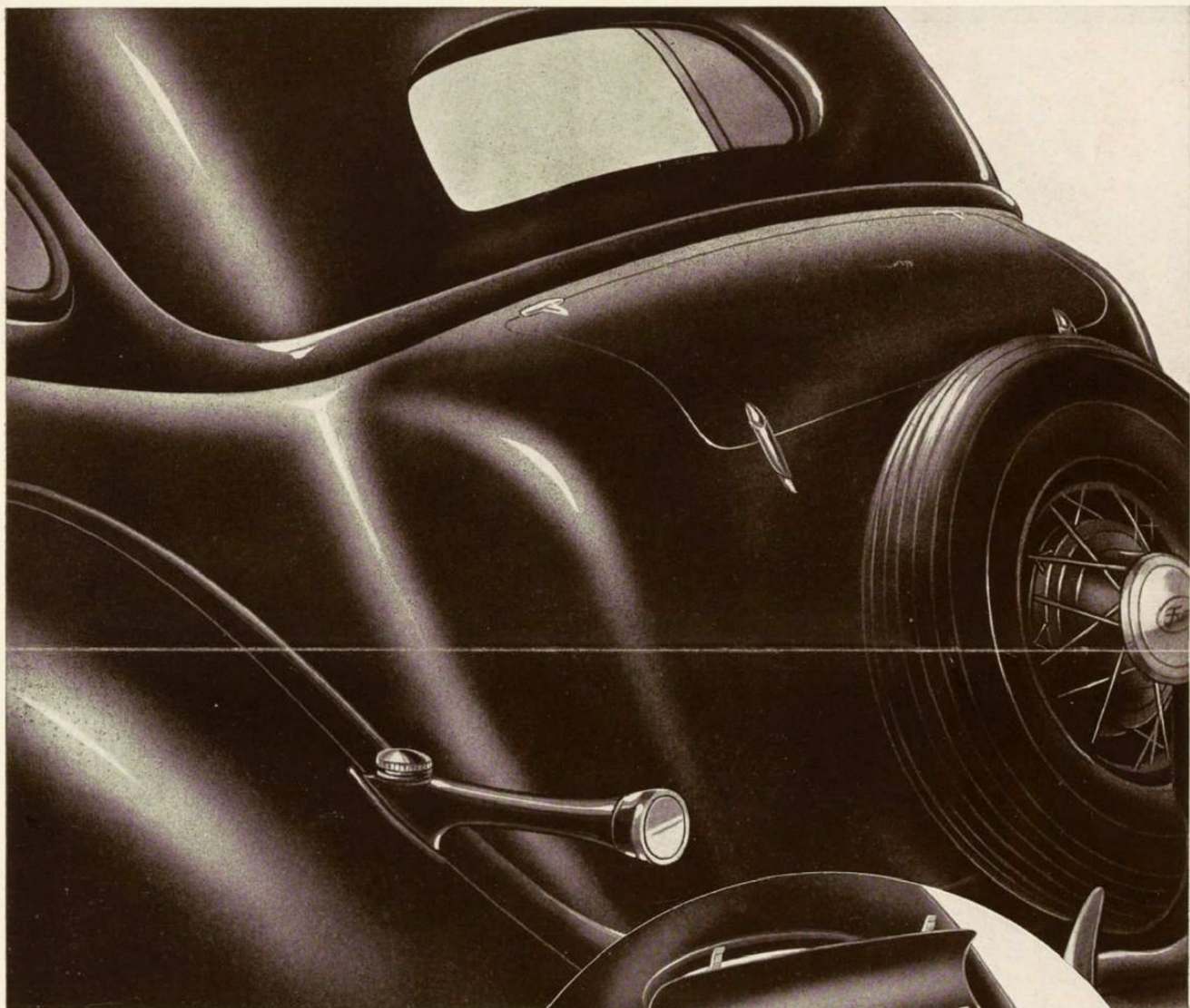
Ford V8

FOR 1935

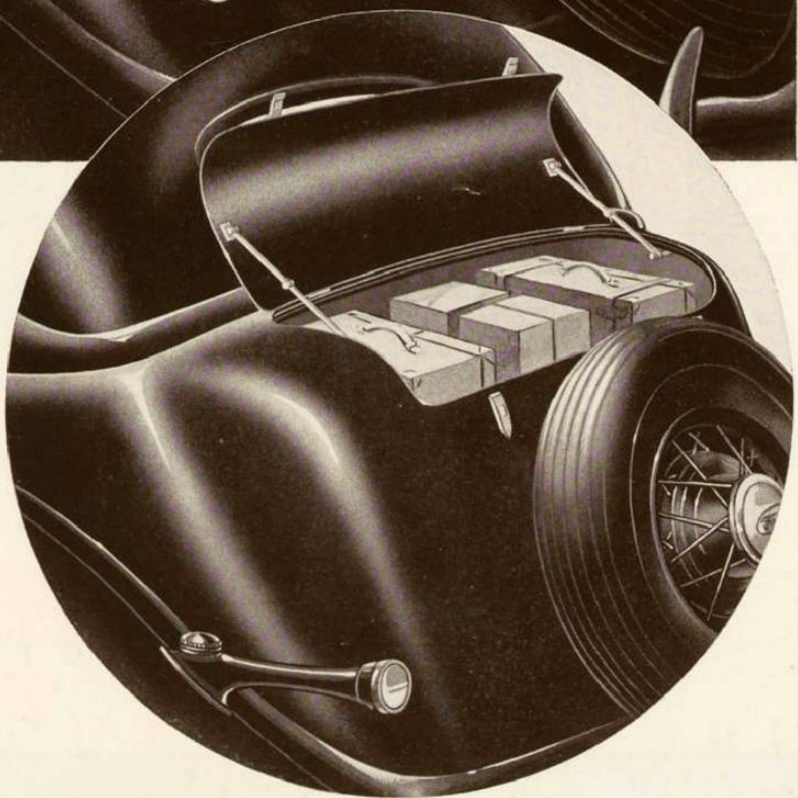
THE NEW LUXURIOUS TOURING SEDAN

THE LATEST ADDITION TO THE FORD RANGE OF FINE CARS

This luxurious Touring Sedan has now been added to the range of Ford V-8 Models for 1935. The outstanding feature of its strikingly handsome design is the spacious luggage trunk built into the rear quarter of the body. Body interiors are exceptionally comfortable; rear seats are fitted with centre' arm-rest. This model has also the features that have made the 1935 Ford V-8 the most famous car of the year: Welded one-piece all-steel body . . . Centre-poise riding comfort . . . A new kind of driving ease . . . And thrilling V-8 engine performance.

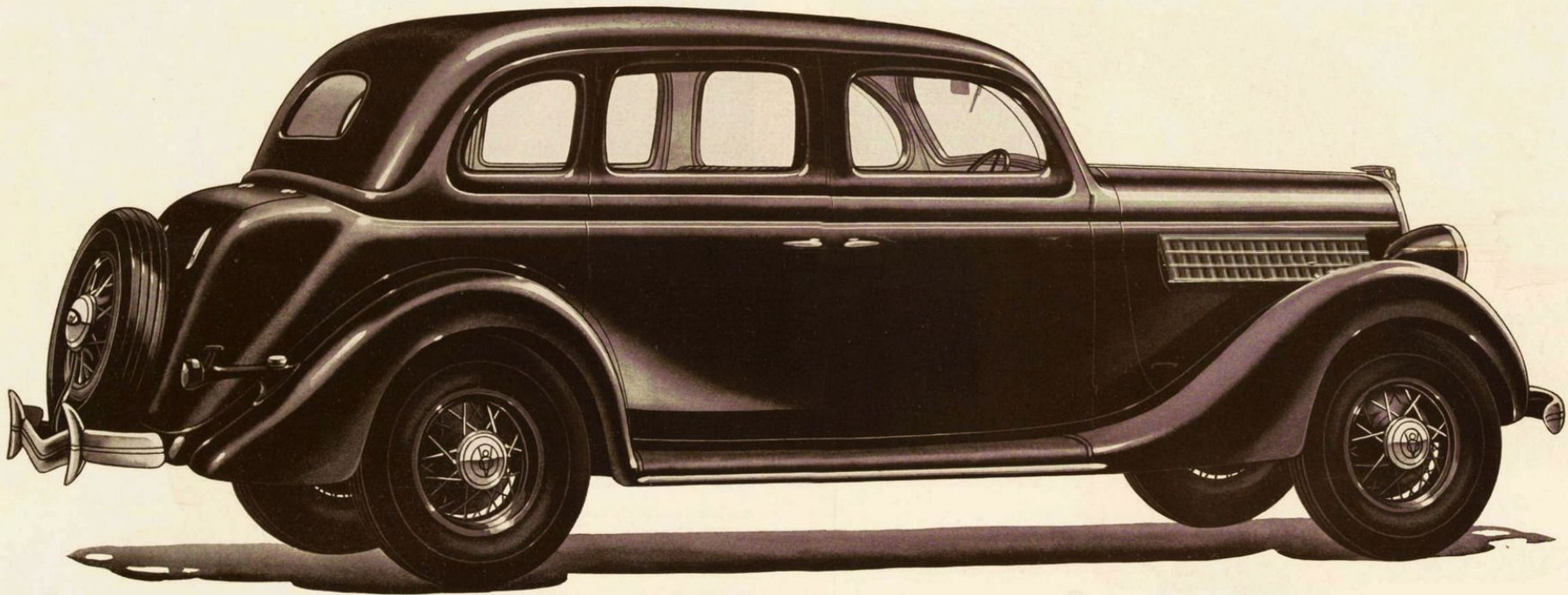


The stylish lines of the built-in luggage trunk enhance the distinctive streamline design of this new Ford V-8 Touring Sedan. The trunk is unusually roomy and will accommodate four suit-cases in addition to sundry smaller packages. As a general-purpose car this model is ideal. It may be used during the week for business or family requirements and at the week-end can be quickly and easily loaded with the necessities for a camping or touring vacation. Passengers have the comfort of unrestricted body room and luggage is protected against loss or damage in the lock-up, dust-proof trunk. Listed at a remarkably attractive price this 1935 Ford V-8 Touring Sedan is to-day's outstanding motor car value. See it, drive it — your Ford dealer will gladly place a car at your disposal. A convenient Ford plan of easy payments is available.



THE NEW TOURING SEDAN

BUILT IN LUGGAGE TRUNK
..... ALL STEEL BODY
CENTRE POISE RIDING
..... V-8 PERFORMANCE



A P R O D U C T O F T H E B R I T I S H E M P I R E



