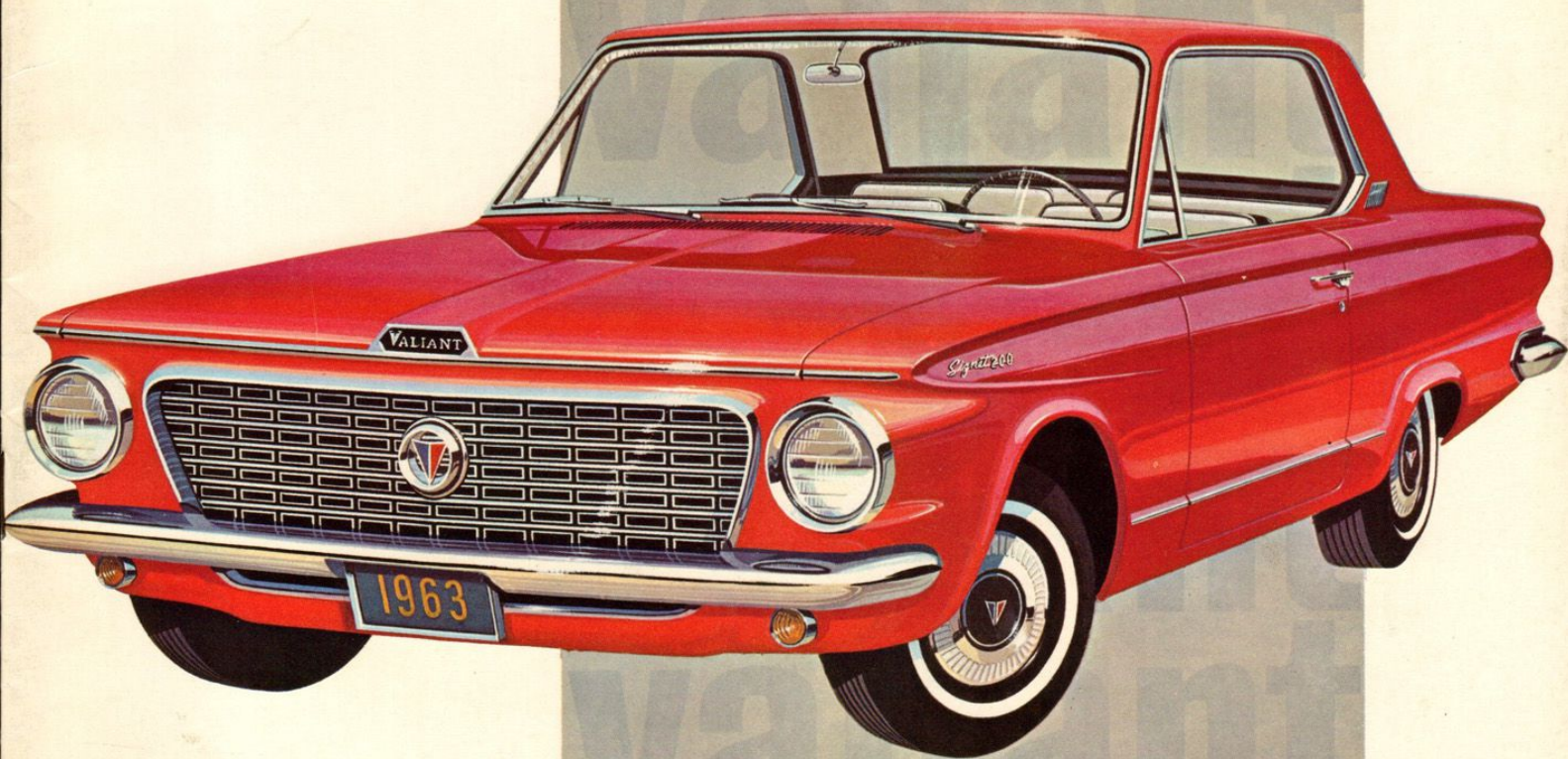


valiant
valiant
'63
valiant
valiant



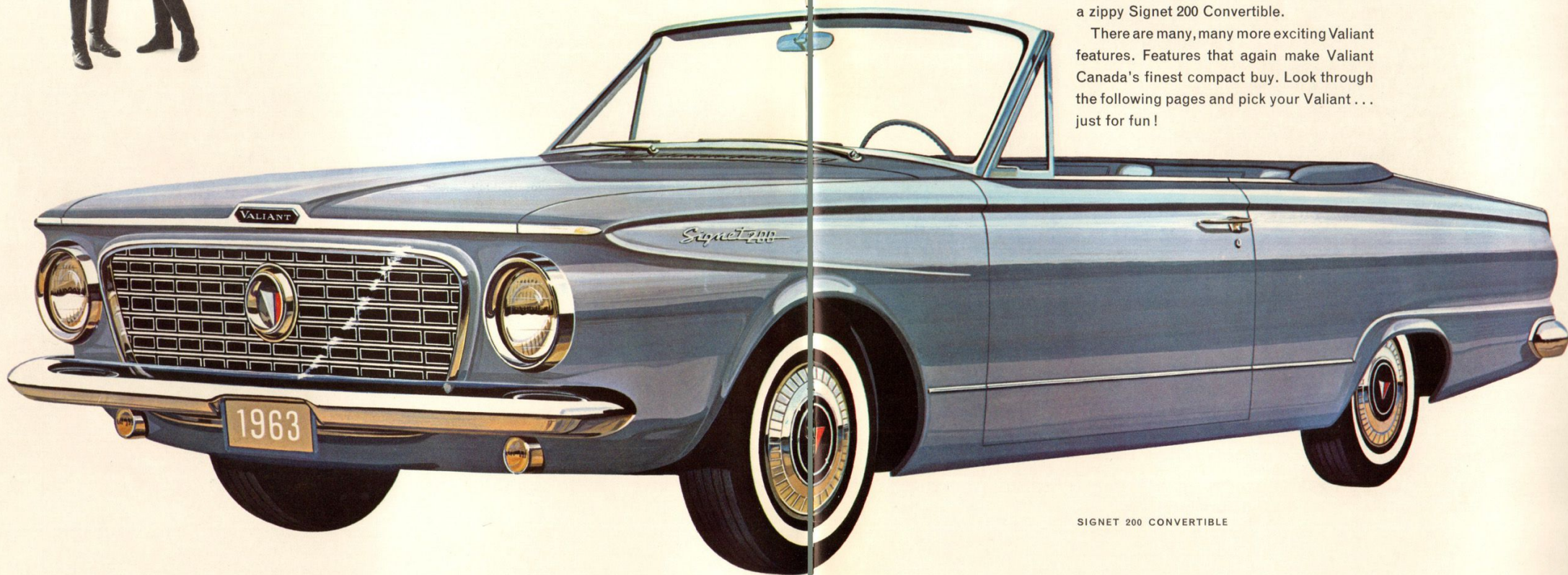


Again . . . nobody beats VALIANT for value!

For 1963, Valiant is an entirely new compact car! A spunky compact with generous new proportions, Valiant gives you plenty of room for six passengers—and stacks of space for luggage!

Valiant's unique styling and luxurious interiors are available in a full line of Sedans, Hardtops, Wagons . . . and brand-new for '63, a zippy Signet 200 Convertible.

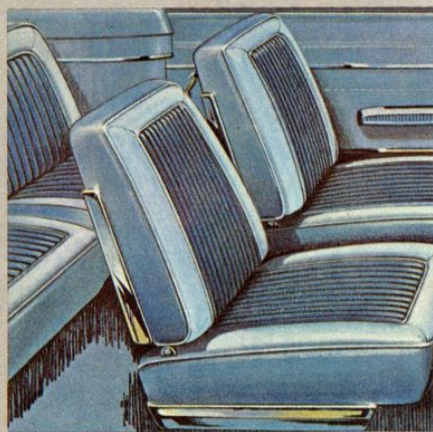
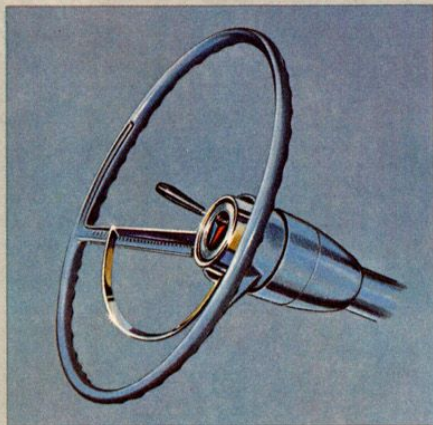
There are many, many more exciting Valiant features. Features that again make Valiant Canada's finest compact buy. Look through the following pages and pick your Valiant . . . just for fun!



SIGNET 200 CONVERTIBLE

valiant **SIGNET 200**

Driving's a breeze... when you sail along in a Signet!



Here it is... the completely new for '63 Signet Convertible! Dreamy? Get in and see for yourself that dreams can come true! Designed for pleasure and comfort, your new Valiant Signet Convertible takes the lid off a new world of driving pleasure.

New, simple-design, manually operated top (power-operated top is optional)... choice of three beautiful all-vinyl interiors... new 6-way adjustable bucket seats... new heater with instant temperature response... new large (15 Imp. gals.) fuel tank... new car... new Valiant... new value!

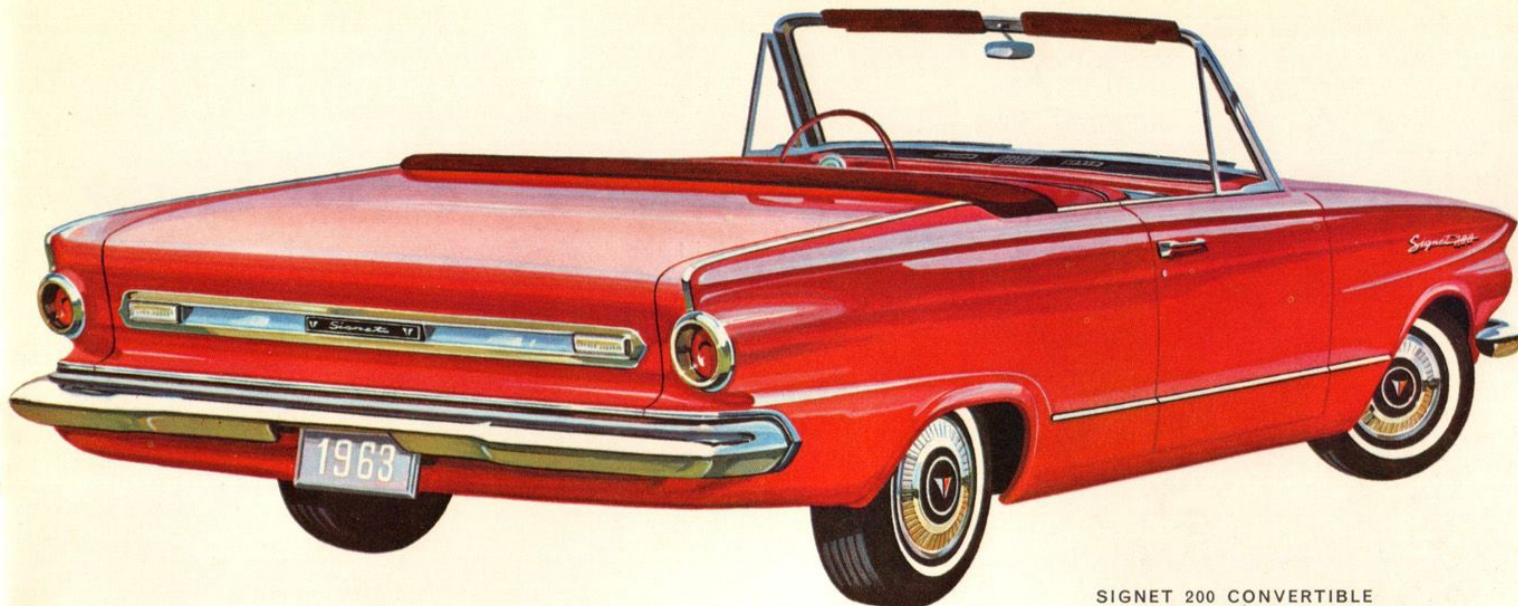
1963's Signet 200 Hardtop is tops in everything a compact should be. Economy, full-size comfort, power, handling ease, crisp, dashing style! Jump in and go... and with Valiant's famous 101 h.p. Slant Six engine you'll get more fun, more economy out of every gallon of gas!

Signet interiors... gay, new and very comfortable, are full of big improvements. Deep pile carpeting, puncture-proofed against stiletto heels; luxury-sized bucket seats; new heating and ventilation system that responds instantly, and gives you precise temperature control; beautiful, easier-to-keep-clean fabrics, and all the famous Valiant quality that makes this the greatest compact value you can drive! Take out a Signet and see for yourself what value is all about! Nobody beats Valiant for value.

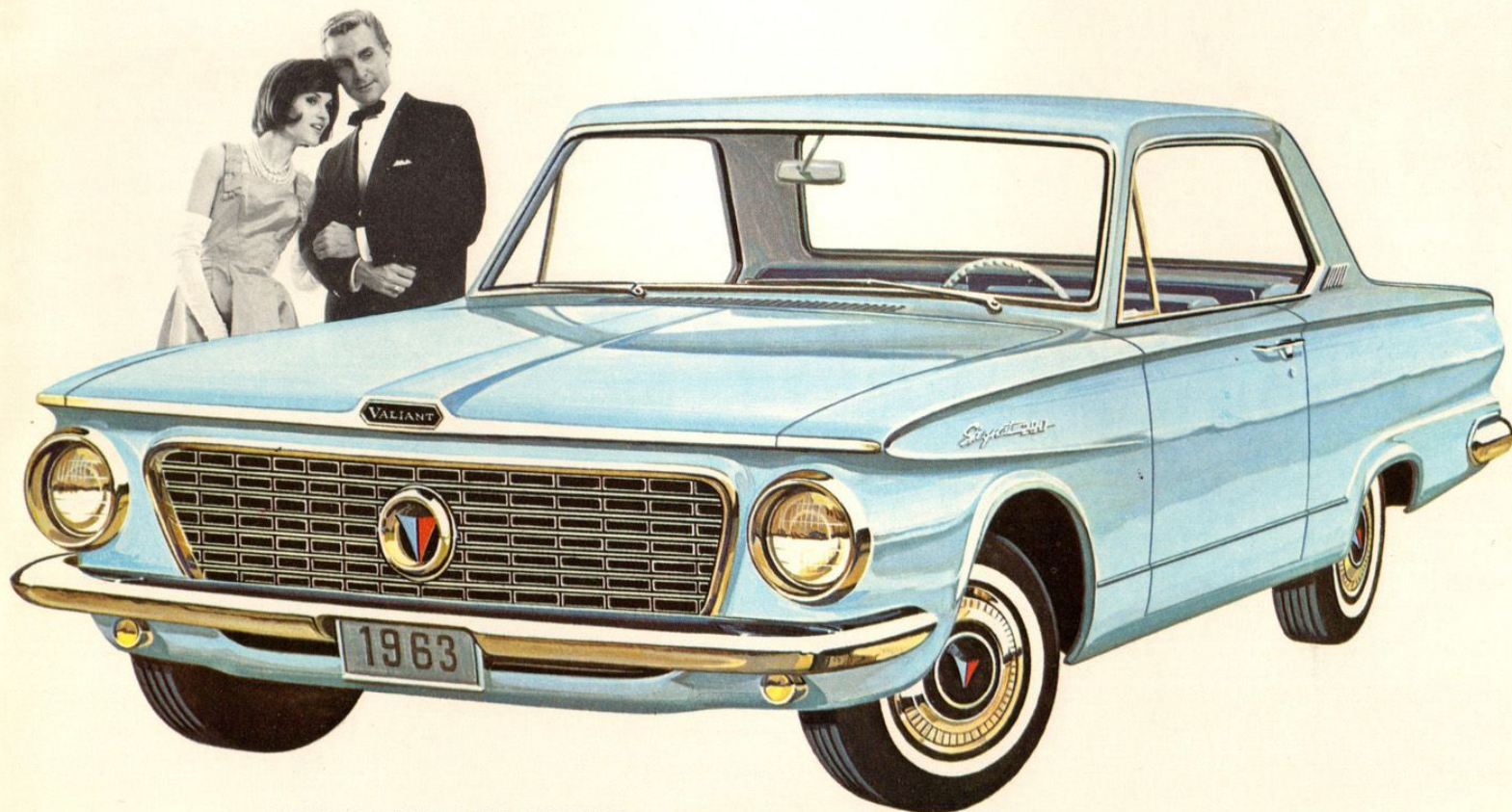
SIGNET 200 Standard Features

Luxury trim and identification. 101 h.p. six-cylinder engine. Six-way adjustable twin bucket seats. Parallel-action Airfoil design windshield wipers. Large (15 Imp. gals.) fuel tank. Wheel covers. Unibody construction. Torsion-AIRE suspension system. Seat-belt attachments. Rear-seat arm rests.

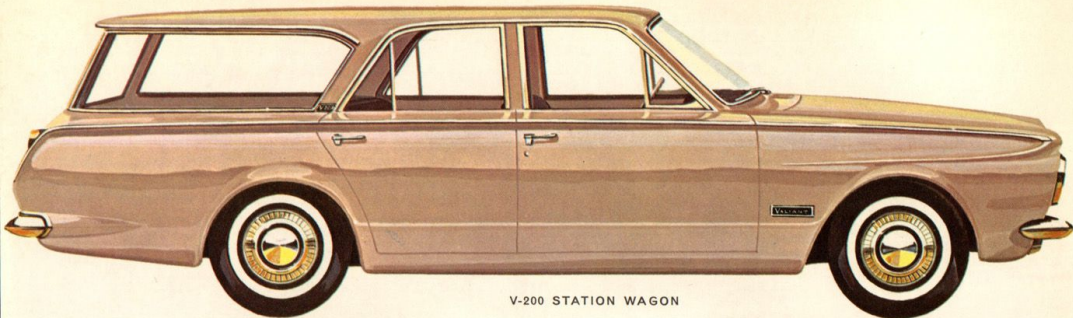
FOR DETAILS OF VALIANT '63'S NEW ENGINEERING FEATURES... alternator; Slant Six Engine; Safety-Rim Wheels; Unibody construction... and Valiant's new 5-year—50,000-Mile Warranty, See page 9.



SIGNET 200 CONVERTIBLE



SIGNET 200 TWO-DOOR HARDTOP



V-200 STATION WAGON

V-200 Standard Features

Distinctive trim and identification. 101 h.p. six-cylinder engine. Parallel-action Airfoil design windshield wipers. Large (15 Imp. gals.) fuel tank. Hub caps. Unibody construction. Torsion-AIRE suspension system. Seat-belt attachments.

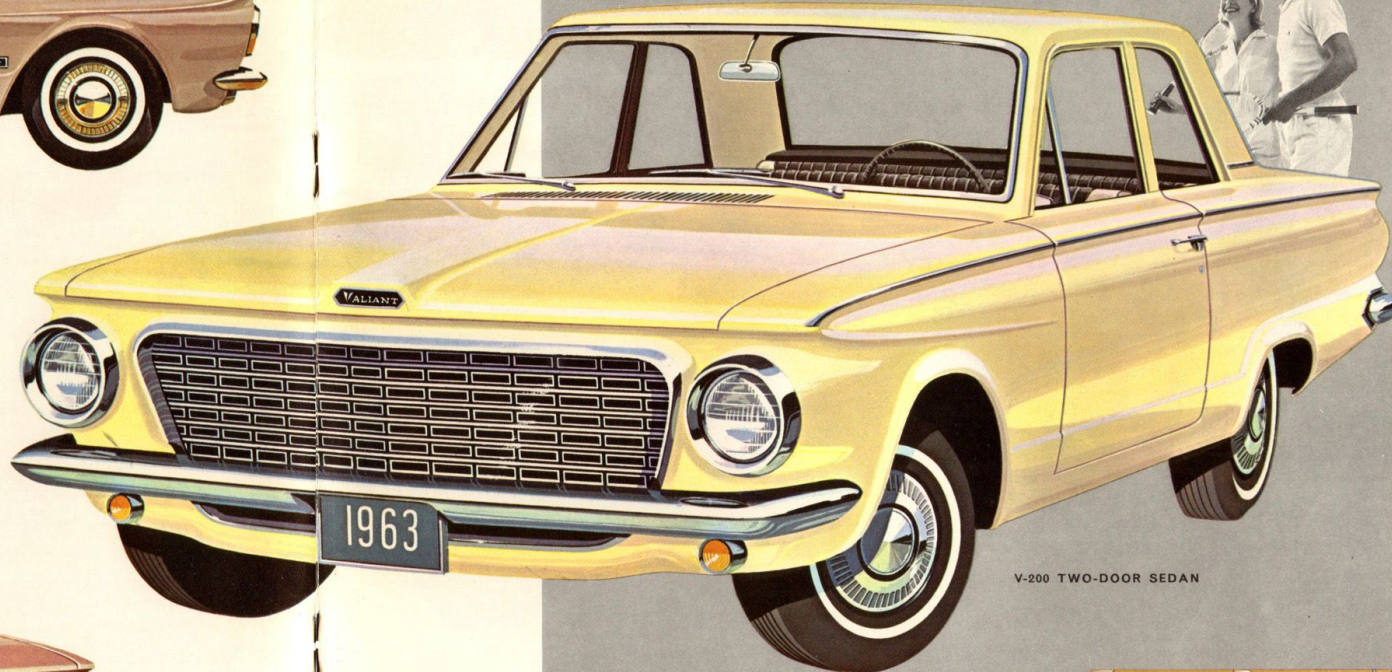
FOR DETAILS OF VALIANT '63'S NEW ENGINEERING FEATURES . . . alternator; Slant Six Engine; Safety-Rim Wheels; Unibody construction . . . and Valiant's new 5-year—50,000-Mile Warranty, See page 9.



V-200 FOUR-DOOR SEDAN

valiant V-200

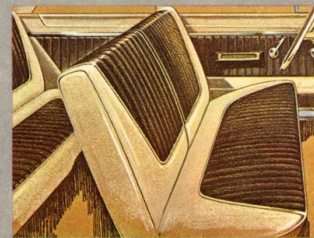
Fun to drive, lovely to look at, and a real down-to-earth price . . . that's Valiant V-200



V-200 TWO-DOOR SEDAN

Get that V-200 feeling for 1963! Make your choice from the lovely four-door Sedan, the smart two-door Sedan or the family-sized four-door Station Wagon. Every V-200 is built for value, economy and big driving satisfaction!

The interior of your new V-200 is all comfort—all convenience! Delightful colour schemes, hard-wearing fabrics, stronger seats with better springing, heel-proof floor mats, newly-designed instrument panel, and all the luxury appointments to match your care-free mood.



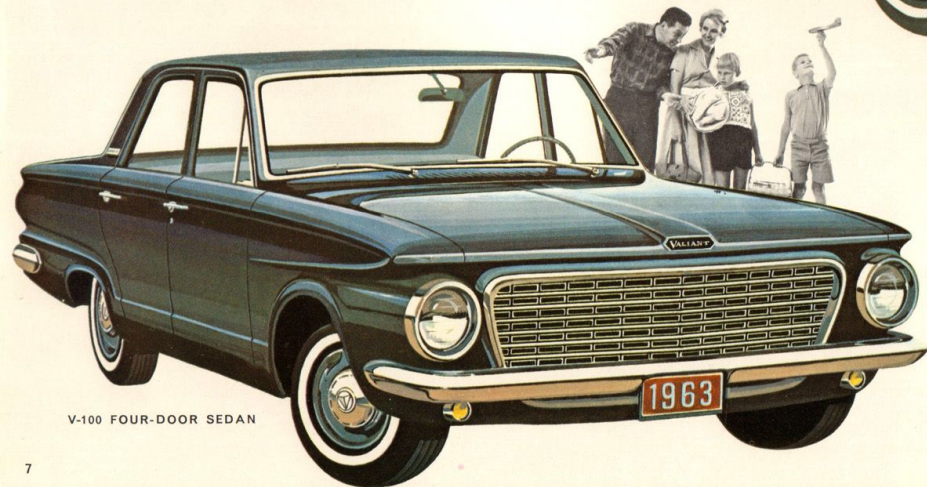


V-100 TWO-DOOR SEDAN

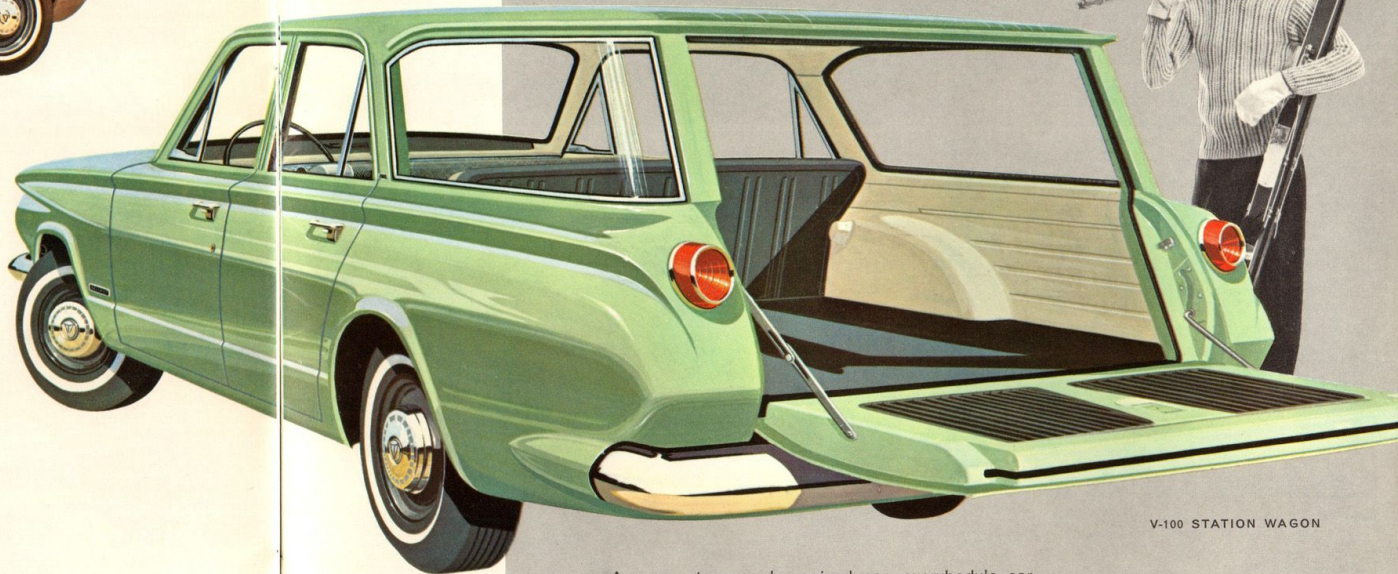
V-100 Standard Features

Distinctive trim and identification. 101 h.p. six-cylinder engine. Parallel-action Airfoil design windshield wipers. Large (15 Imp. gals.) fuel tank. Hub caps. Unibody construction. Torsion-AIRE suspension system. Seat-belt attachments.

FOR DETAILS OF VALIANT '63'S NEW ENGINEERING FEATURES . . . alternator; Slant Six Engine; Safety-Rim Wheels; Unibody construction . . . and Valiant's new 5-year—50,000-Mile Warranty, See page 9.



V-100 FOUR-DOOR SEDAN



V-100 STATION WAGON

valiant V-100

Here are the budget-happy cars for 1963! The V-100's are the lowest-priced Valiants—but you'd never guess that to look at them! Snappy performance, delightful manners and beautiful styling offer you luxury and fun at a price that's amazingly low!

A compact car, a low-priced car, everybody's car—that's Valiant V-100! Lounging room for six inside, gay new style outside, famous 101 h.p. Slant Six purring along up front, and underneath—Torsion-AIRE suspension for the smoothest ride yet! Unibody—the toughest, safest, quietest body on the road! (And it's all corrosion resistant for long life and appearance!). Battery-saving alternator electrical system! Closed Crankcase Ventilation System for a cleaner engine and better performance! "Fastart" choke design for positive starting in any weather! All-aluminized exhaust system for longer life and safety! Nobody beats Valiant for Value!

The quality behind the value!

Here are a few Chrysler Corporation features that make '63 Valiant the "King of the Compacts!"

A. The biggest engineering advance of the year . . . *Chrysler Corporation's alternator* (standard on all '63 Valiants) replaces the generator and feeds a sure supply of current at *all* engine speeds—fast *and* idle. The alternator prolongs the efficient life of the battery, and enables it to keep a stronger charge in reserve at all times.

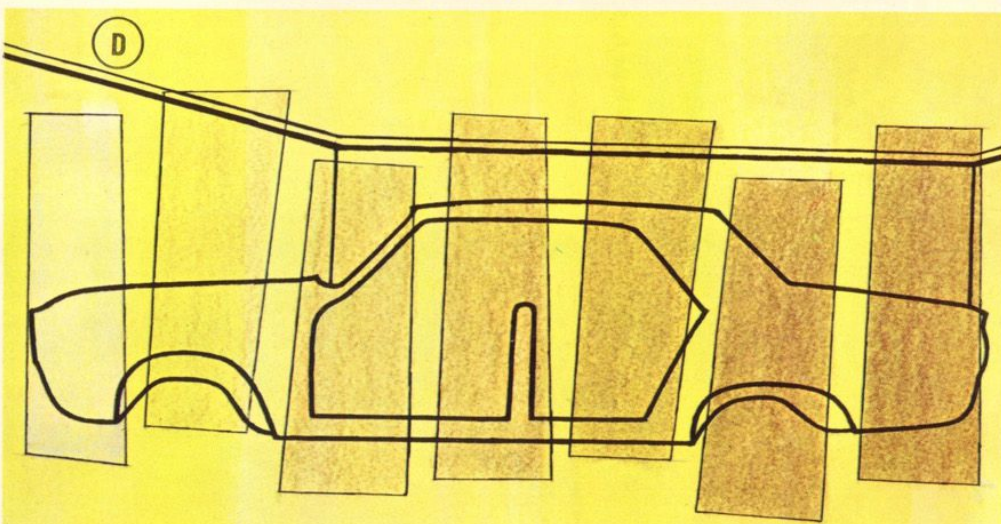
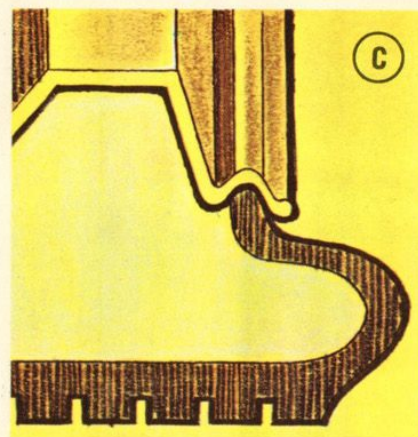
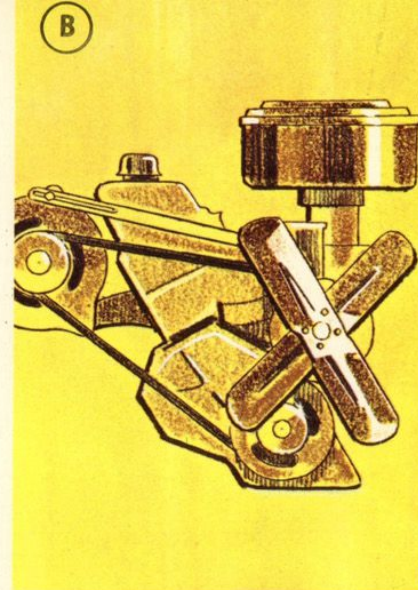
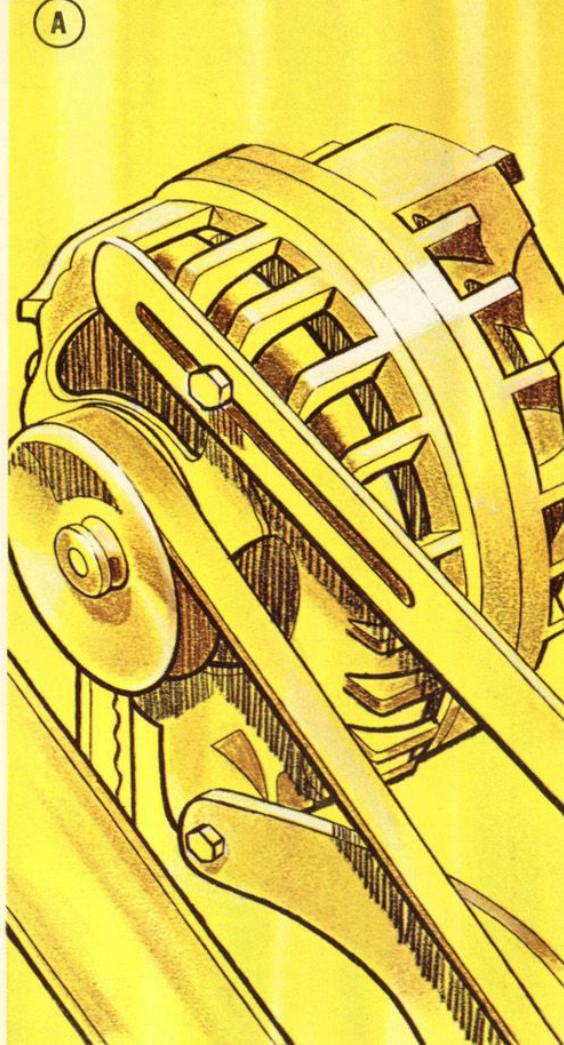
B. The peppy 101 h.p. *Slant Six engine* is packed full of quality features. "Faststart" choke that gives you positive starts in any weather. Super-silent air-cleaner that increases operating quietness. Closed crankcase ventilation system that returns contaminating engine gases—gives better performance and economy!

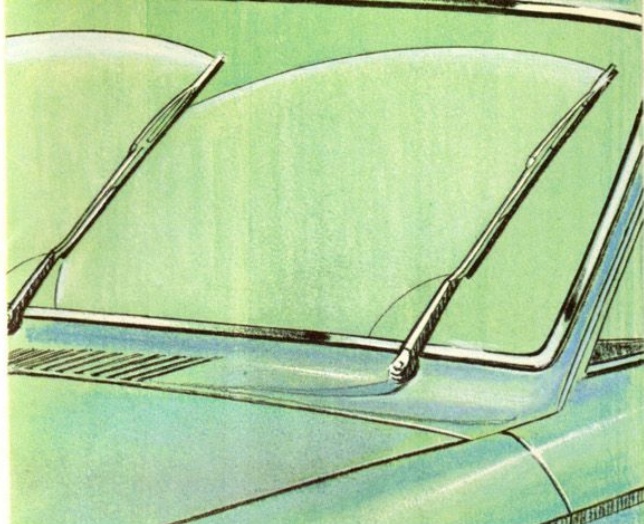
C. Safety-conscious Valiant gives you that relaxing sense of security at all times. *The Safety-Rim Wheel* protects you from dangerous swerves and skids caused by blow-outs and punctures. By keeping the tire in place, Valiant's Safety-Rim Wheel gives you steady, controlled steering while you bring your car to a safe stop.

D. Whatever the weather or road conditions, your new Valiant will stay showroom-new for years . . . thanks to solid *Unibody construction*, and the thorough *Seven-Stage rustproofing* process that "deep-dips" every Valiant body to assure complete protection from rusting—both inside and out!

New 5-Year— 50,000-Mile Warranty

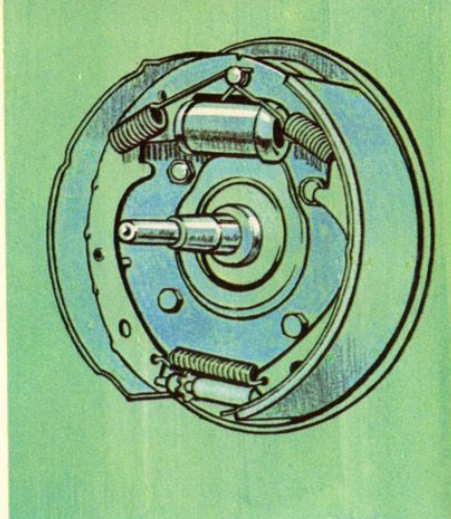
Another Valiant "first" . . . the dramatic proof of Chrysler Corporation engineering leadership and determination to offer you the finest, most dependable cars on the road. The principal components of the engine to rear axle power train on all 1963 Valiants are now backed by a 5-year—50,000-mile warranty. The major components generally covered by the new warranty are the engine, transmission, drive shaft, rear axle and universal joints. See your Chrysler of Canada Dealer for complete details.





PARALLEL-ACTION WINDSHIELD WIPERS: Valiant's new wipers eliminate that distracting uncleaned area in the middle of your windshield, and give you better all 'round driving visibility. New Airfoil design keeps the wiper blades tight against the windshield assuring positive wiping action at highway speeds.

SERVO-CONTACT BRAKES: Valiant's self-energising brakes assure you of positive, straight-line stopping ability at all times—in all weathers. Moulded asbestos linings, bonded to brake shoes, eliminate rivets to give you more lining area, longer lining life.



A PANEL OF WONDERS: Valiant puts its gifted performance at your fingertips . . . and Valiant has so much to give!

Whether you favour automatic or easy-shift manual transmission, driving is FUN in a Valiant . . . push-button gear selection is fast and easy on the three speed Torque-Flite automatic transmission. For the sports-minded driver, Valiant provides a clutch that combines less depression effort with complete disengagement.

Instruments and other controls are grouped clearly and efficiently right in front of the driver—easily readable . . . easily reachable.

In 1963, Valiant has an efficient heating and ventilating system. Three simple push-pull knobs control precise comfort requirements. Excellent defrosting, all-over interior heating, high fresh-air capacity for summer ventilation, instantaneous response to regulator adjustment . . . comfort all-ways—in Valiant!

Valiant's fully transistorized radio brings instant entertainment; puts less drain on the battery; has longer life due to greater strength and vibration resistance of transistors.

Many other features, safety options and accessories are available on your new 1963 Valiant. Features that, for just a little extra, make a big difference to driving pleasure—even in Valiant! Your Valiant dealer will gladly supply full details.

Optional equipment for all 1963 VALIANTS

VALIANT SIGNET 200

145 h.p. six-cylinder engine. Push-button automatic transmission. Power steering. Fully-transistorized radio. Power-operated convertible top. Back-up lights. Bumper guards. Child-guard safety locks for rear doors. Rear window defogger.

VALIANT V-200 AND V-100 MODELS

145 h.p. six-cylinder engine. Push-button automatic transmission. Power steering. Fully-transistorized radio. Back-up lights. Bumper guards. Wheel covers. Child-guard safety locks for rear doors. Rear window defogger.

NOTES:

SPECIFICATIONS

INTERIOR DIMENSIONS

	Sedans	Suburbans
Headroom, Front.....	38.0 in.	38.3 in.
Headroom, Rear.....	37.2 in.	37.9 in.
Legroom, Front.....	40.9 in.	40.9 in.
Legroom, Rear.....	36.2 in.	34.8 in.
Hiproom, Front.....	56.9 in.	56.9 in.
Hiproom, Rear.....	57.0 in.	57.0 in.
Seat Height, Front.....	8.7 in.	8.7 in.
Seat Height, Rear.....	11.6 in.	11.6 in.
Knee Room, Rear.....	4.7 in.	3.3 in.
Trunk Volume—Sedans.....	30.2 cu. ft.	

EXTERIOR DIMENSIONS

	Sedans	Suburbans
Wheelbase.....	111.0 in.	106.0 in.
Tread, Front.....	55.9 in.	55.9 in.
Tread, Rear.....	55.6 in.	55.6 in.
Length, Overall.....	192.8 in.	186.8 in.
Width, Overall.....	68.8 in.	68.8 in.
Height, Overall.....	54.0 in.	53.1 in.

SUBURBAN CARGO COMPARTMENT DIMENSIONS

Length—rear seat up, tailgate up.....	51.8 in.
Width maximum.....	52.6 in.
Between wheel housings.....	43.6 in.
Height max.—floor to ceiling.....	30.4 in.
Rear opening width—maximum.....	44.3 in.
Rear opening height.....	26.1 in.
Cubic feet load space all seats flat.....	68.3 in.

TOTAL CONTACT BRAKES

Four-wheel hydraulic, internal expanding, duo-servo with self-energizing shoes. Molded asbestos lining, bonded to shoes. Size: 9" x 2½" in front, 9" x 2" in rear. Lining area: 153.5 sq. in.

CAPACITIES

Fuel Tank.....	15 Imperial Gallons
Cooling System.....	10 Imperial Quarts
Engine Crankcase.....	3.25 Imperial Quarts

Constant improvement of its products requires Chrysler Corporation of Canada, Limited, to reserve the right to change prices, specifications, and standard equipment without obligation, from time to time, and without notice. Certain special equipment is shown on the vehicles illustrated in this catalogue but your local dealer will gladly advise you of those items that are standard. Additional extra equipment available.

EVERY VALIANT IS WARRANTED FOR 5 YEARS OR 50,000 MILES (WHICHEVER FIRST OCCURS) FOR MAJOR POWER-TRAIN COMPONENTS, IN ADDITION TO NORMAL 12-MONTH OR 12,000-MILE (WHICHEVER FIRST OCCURS) WARRANTY. YOUR DEALER HAS FULL DETAILS.

ENGINES

	Standard	Optional
Horsepower.....	101	145
Compression ratio....	8.2 to 1	8.2 to 1
Displacement.....	170 cu. in.	225 cu. in.
Type.....	in-line OHV	in-line OHV
Location and position		
front.....	inclined	30 degrees
Cylinders.....	six	six
Cooling System.....	liquid	liquid

SUSPENSION

Front..... Torsion bars and ball joints
Rear..... 2½-inch outboard mounted asymmetrical leaf springs
Shock absorbers..... exclusive Oriflow type

ELECTRICAL SYSTEM

Heavy-duty, 12-volt, 48-ampere-hour battery, 12 volt, 30 amp. alternator, standard on all models. *Optional at extra cost:* 70-ampere battery, 40-ampere alternator. Engine block heater. Variable speed windshield wipers. Backup lights. Heater (mandatory option). Radio. Windshield washer.

REAR AXLE

Type.....	Hotchkiss Drive Hypoid Rear Axle
Ratio with manual and automatic transmission....	3.23 to 1 170 Engine
Ratio with manual transmission.....	3.23 to 1 225 Engine
Ratio with automatic transmission.....	2.93 to 1 225 Engine

TIRES AND WHEELS

Safety-Rim wheels with 2-ply, low pressure tubeless tires.
Wheels are 13" x 4½" with 6.50 x 13 tires, including spare, standard on all models. Power steering with automatic transmission optional.