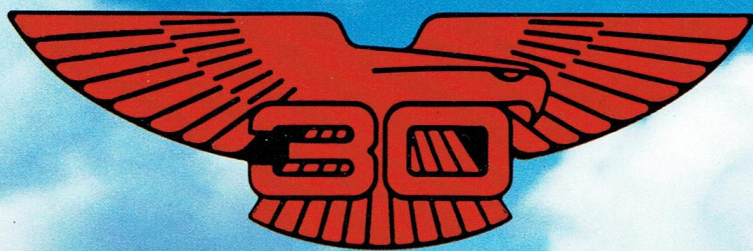


# Ford Falcon S

## 30th Anniversary



**Have you driven a Ford...lately?**





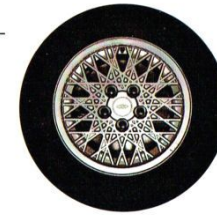
THE 'S' DOES NOT  
STAND FOR SUBURBAN.

Or sedate. Or sluggish. But it could  
stand for Sports. Equally it might be for

Sensational, Sophisticated or Stylish.

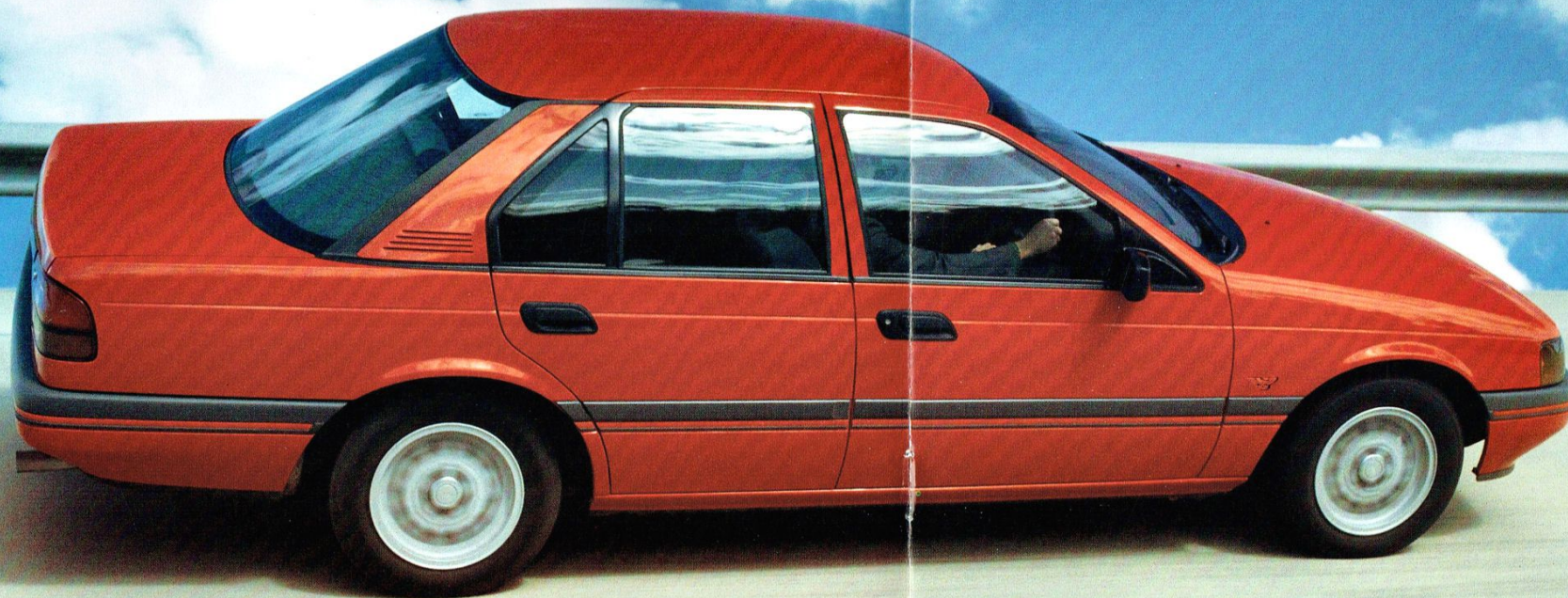
Certainly, for many years Falcon S has  
been the car for those drivers who demand  
something more.

The latest S features a dis-  
tinctive badge on its front fender,  
commemorating the 30th Anniver-  
sary of Falcon.



SLEEK.

Falcon S is a car that stands out,  
even when it's standing still. The  
elegant, aerodynamic lines that are





designed to slip so quietly through the air also draw plenty of admiring looks.

Additional features leave no doubt as to its sporting character: body side mouldings, front spoiler, sports wheels, Pirelli tyres and much more.

#### SIZZLE.

To put the 'go' into the show, Falcon S steps out with a potent 3.9 litre overhead camshaft multipoint EFI engine.

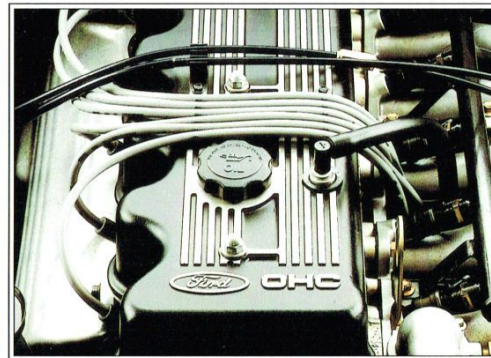
It is designed to produce some

impressive performance figures: 139 kW maximum power at 4250 rpm and 338 Nm maximum torque at 3500 rpm.

The advanced multipoint electronic fuel injection, coupled with the Ford EEC4 Engine Management System, precisely controls fuel metering to accomplish efficient fuel combustion.

It delivers the sort of power and torque the sporting driver demands.

In fact, when fitted with automatic



3.9 litre multipoint EFI engine.

transmission, Falcon S has a towing capacity of 2100\* kilograms, the greatest in its class, which gives you more than enough to tow a caravan or double horse float. And there's all

the power you need to do it with ease.

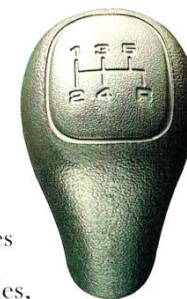
#### SHIFT.

A smooth-shifting, 5-speed manual is the standard transmission in Ford Falcon S.

Or, if you prefer, for a little extra you can enjoy Ford Falcon's Australian-developed

4-speed electronically controlled automatic transmission that features power and economy modes, which the driver can select.

When this option is fitted, a distinctive 4-speed automatic badge appears on the rear boot/liftgate.



5-speed manual transmission



Advanced 4-speed electronically controlled automatic.

\*Subject to applicable legislation and tow bar capacity.



Ford Falcon S Wagon



## SUMPTUOUS.

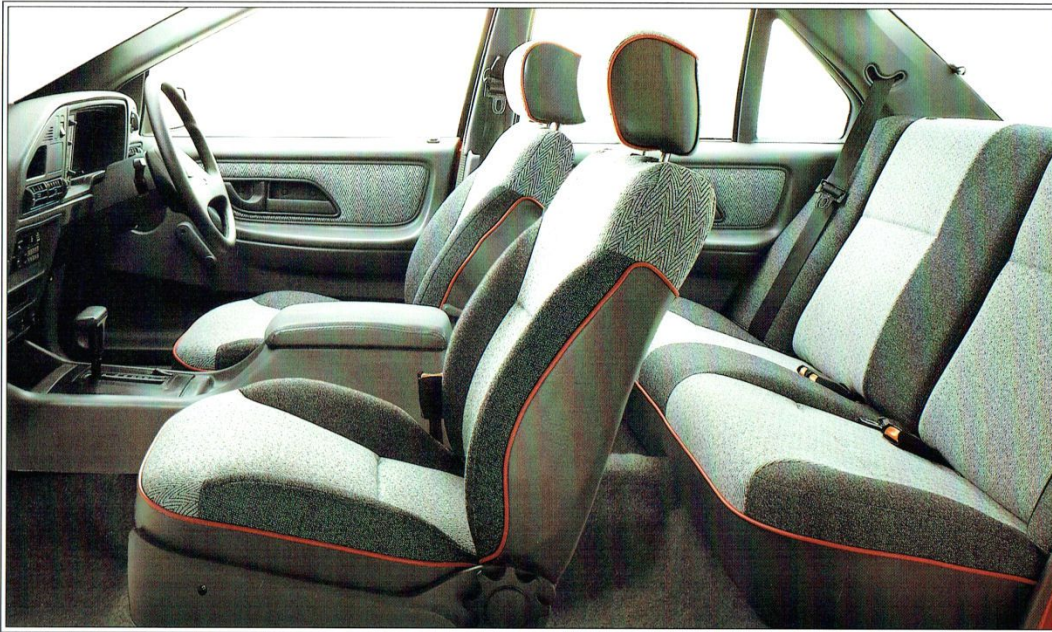
Though Falcon S is dedicated to the driver, it is also created for comfort.

The driver and front seat passenger enjoy bucket seats with generous fore and aft adjustment, an infinitely adjustable control

operate, the factory-fitted Ford air conditioning system was designed with Australia's extreme conditions in mind.

## SPACE.

The Falcon S gives you plenty of passenger room and a voluminous boot.



*Falcon S interior, superb space and comfort. (Automatic transmission optional at extra cost.)*

for backrest recline and a five-position head rest.

In addition, the driver's seat features a four-position lumbar support and a seat cushion height adjuster.

And both front and rear seats feature co-ordinated fabric trim.

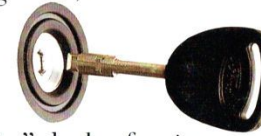
To increase your comfort level, integrated air conditioning is fitted as standard equipment on Falcon S. Easy to

But if you need even more room, Falcon S station wagon offers many of the same features as the sedan plus a cavernous load space that can take up to 2622 litres with both sides of the 60/40 split rear seat backs folded down.

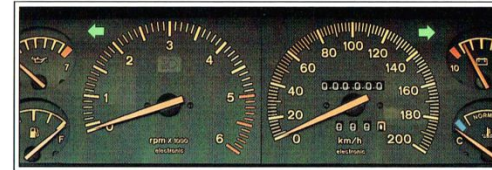
## SECURITY.

Because security is so important these days, a new theft deterrent system has been incorporated into Falcon S.

Doors, ignition, and boot/liftgate now feature high-security "Tibbe" locks for increased protection against theft.



Door lock buttons are recessed to help deter unauthorised entry and the ignition lock barrel is now reinforced for increased strength. And the security-coded AM/FM radio with stereo cassette player further emphasises the security story.



*Sports instrumentation*

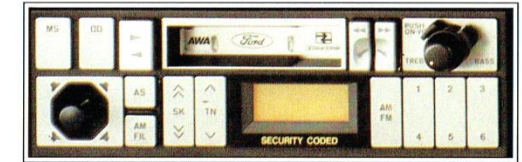
## SENSORY.

The instrument panel of the Falcon S provides you with information at a glance in an all analogue display. It features centrally positioned electronic speedo and tacho, plus four separate gauges that report the status of fuel, oil pressure, engine coolant temperature and battery.

Warning jewels for nine separate mechanical functions are located in a strip below the instrument cluster.

Everything you need to control your environment is within easy reach. Standard features now include the convenience of

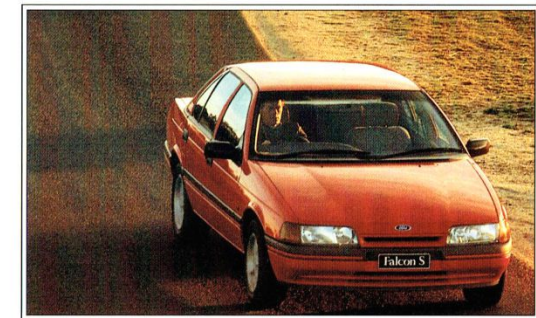
power operated exterior rear view mirrors, and power operated door locks.



There's also an efficient heater with front and rear air ducts for improved air flow throughout the car. A security-coded electronically tuned AM/FM radio/cassette player incorporates twin speakers, auto reverse and auto memory storage functions.

For a little more, you may choose a deluxe four speaker AM/FM radio cassette player with built-in security-coded theft deterrent system.

A lidded console bin between the front bucket seats provides a handy storage area.



Two steering column-mounted lever combination switches give fingertip control for turn indicators, and washer wipers that include demand wash/wipe and intermittent wipe functions.





*Falcon S suspension helps give a smooth ride with precise handling*

## SMOOTH.

Appropriate to a true driver's car, Falcon S has handling characteristics that inspire confidence.

The new short and long arm, long spindle (SLALS), front suspension utilizes a concept well proven by Honda and Mercedes-Benz, but unique in an Australian-built car and it provides excellent driver control and manoeuvrability.

The suspension in the S sedan is specially tuned for sporty performance and it utilizes a "Watts Link" system at the rear.

The S wagon features the proven and reliable "Hotchkiss" rear suspension. Pirelli tyres help provide the finishing touch.

For sheer stopping power Ford Falcon S has large diameter, power-assisted four wheel disc brakes. And power-assisted rack and pinion steering helps deliver a precise and positive feel.

So S stands for much more than suburban. With all these features it's little wonder that the S in Falcon S means such things as Sporty, Sophisticated, Self-confident and more.

All Ford vehicles sold throughout Australia are backed by Fordcare after sales service. Fordcare is comprised of a number of individual service products designed exclusively for Ford vehicles and their drivers. These include technical support back-up, diagnostic equipment, approved Ford/Motorcraft replacement parts and parts and service warranties.



This brochure is designed to provide you with a general introduction to the Ford Products (including available optional equipment) referred to, and should be read in conjunction with the latest specification sheet. Because of changes in conditions and circumstances Ford\* reserves the right, subject to all applicable laws, at any time, at its discretion, and without notice to discontinue or change the features, designs, materials, colours and other specifications and the prices of its products, and to either permanently or temporarily withdraw any such products from the market without incurring any liability to any prospective purchaser or purchaser.

The latest specification sheet should be referred to for information on the availability, ordering and use of optional equipment. Always consult an Authorised Ford Dealer for the latest information with respect to features, specifications, prices, optional equipment and availability before deciding to place an order.

\*FORD MOTOR COMPANY OF AUSTRALIA LIMITED. (Incorporated in Victoria.) Registered Office: 1735 Sydney Road, Campbellfield, Victoria 3061.

# Have you driven a Ford... lately?

