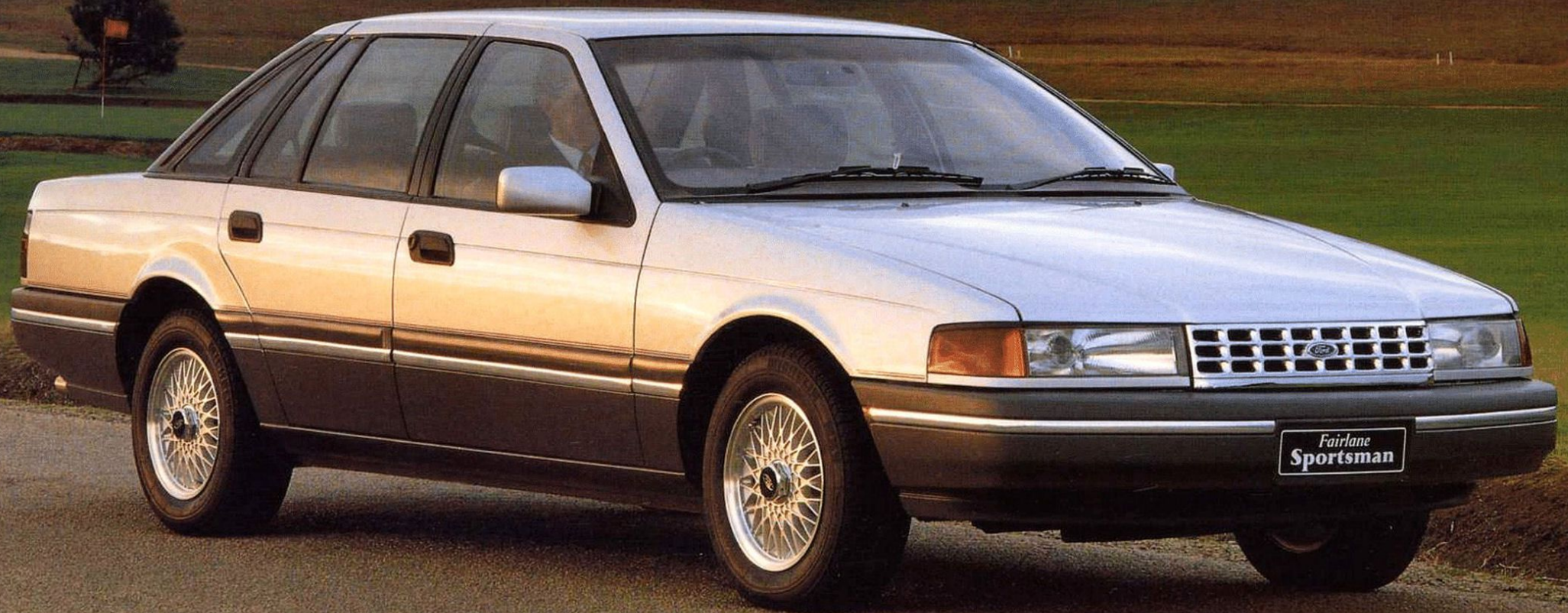


# Fairlane Sportsman.







*Seats & doors trimmed in deep grey velour.*

## THE LIMITED EDITION FAIRLANE SPORTSMAN.

The latest Fairlane is far more than merely the inheritor of a proud tradition.

It is undoubtedly the finest car yet to carry the Fairlane name. And

now Ford introduces the Fairlane Sportsman, with a list of additional features that make it better value than ever and even more individualistic. This is immediately apparent

inside its ample accommodation. Sportsman seats and

door trims are upholstered in a distinguished grey velour, with subtle blue and pink flecks.

To set the Sportsman further apart, the raked and sweeping Fairlane lines are accentuated by a two-tone paint treatment in Stark White and Platinum and a very stylish pinstripe down the sides.

The bumpers are argent in colour, and the exterior rear view mirrors are co-ordinated to match the body colour.

Adding to the sporty looks, Fairlane Sportsman is fitted

superbly stylish alloy wheels and Michelin 205/65

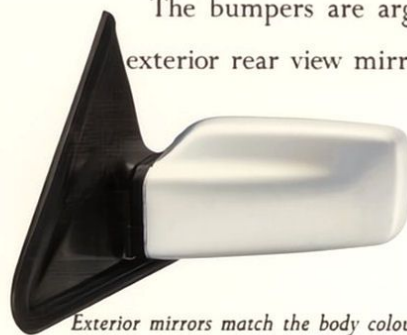
tyres. Naturally, the extensive list of features that make Fairlane the superb car it is, can be found as standard on Sportsman.

And because this is strictly a limited edition, only a fortunate few will be able to enjoy the rewards of owning the very individualistic Fairlane Sportsman.

To be one of those few, see your Ford Dealer, now.



*Alloy wheels and Michelin tyres.*



*Exterior mirrors match the body colour.*



This brochure is designed to provide you with a general introduction to the Ford Products (including available optional equipment) referred to, and should be read in conjunction with the latest specification sheet. Because of changes in conditions and circumstances Ford\* reserves the right, subject to all applicable laws, at any time, at its discretion, and without notice to discontinue or change the features, designs, materials, colours and other specifications and the prices of its products, and to either permanently or temporarily withdraw any such products from the market without incurring any liability to any prospective purchaser or purchaser. The latest specification sheet should be referred to for information on the availability, ordering and use of optional equipment. Always consult an Authorised Ford Dealer for the latest information with respect to features, specifications, prices, optional equipment and availability before deciding to place an order. \*FORD MOTOR COMPANY OF AUSTRALIA LIMITED. (Incorporated in Victoria.) Registered Office: 1735 Sydney Road, Campbellfield, Victoria 3061.