

CATERA
J J J J J J


ONCE IN A BLUE
MOON, SOMETHING NEW
COMES ALONG THAT SCRAMBLES
YOUR PRECONCEPTIONS AND TURNS

OUT TO BE A WHOLE NEW OMELET. LIKE,
WHOEVER THOUGHT YOU COULD SAY "LUXURY
CAR" AND "FUN" IN THE SAME
SENTENCE? WELL, NOW WE DID. AS A
MATTER OF FACT, WE'VE SAID IT
IN ONE WORD. **THE CADDY THAT ZIGS.**
NEW PERSONAL SEDAN HAS FEATURES AND
TECHNOLOGIES FOUND IN FEW OTHER CARS.

REGARDLESS OF PRICE. A PROUD NEW
ADDITION TO OUR LUXURY FAMILY,
CATERA. IT'S THE CADDY
THAT ZIGS.

THE
CADDY
TAHT
ZIGS?

]]]]]]

ONCE IN A BLUE
MOON, SOMETHING NEW
COMES ALONG THAT SCRAMBLES
YOUR PRECONCEPTIONS AND TURNS
OUT TO BE A WHOLE NEW OMELET. LIKE,
WHOEVER THOUGHT YOU COULD SAY "LUXURY
CAR" AND "FUN" IN THE SAME
SENTENCE? WELL, WE DID. AS A
MATTER OF FACT,  WE'VE SAID IT
IN ONE WORD. CATERA. YOU'LL FIND THIS
NEW PERSONAL SEDAN HAS FEATURES AND
TECHNOLOGIES FOUND IN FEW OTHER CARS,
REGARDLESS OF PRICE. A PROUD NEW
ADDITION TO OUR LUXURY FAMILY,
CATERA. IT'S THE CADDY
THAT ZIGS.

We've arranged this book in sections. Each represents a major area of interest for individuals considering a personal luxury sedan. Find out why *Catera is Hot* on PAGE 10. Discover how *Catera*

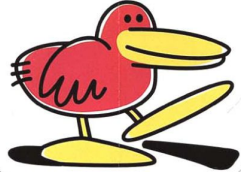
THE INSIDE SCOOP

is *Comfort* on PAGE 12. Learn about some fascinating new technology and why *Catera is Safety* on PAGE 18. And what would luxury be without those ingenious and thoughtful features? Find them in *Catera is Cool* on PAGE 24. The nitty-gritty on everything from induction systems to audio design will convince enthusiasts that *Catera is Performance & Technology* on PAGE 28. Believe beauty lives in the details? Prepare for an epiphany with



Catera Features & Options, *Catera Powertrain & Performance*, *Catera Values* and *Catera's Warranty* beginning on PAGE 30. Find out about the *Catera* ownership experience. Audit a class at *Catera College* on PAGE 34. If you're ready to start making choices, you'll find *Catera Exterior Colors and Interior Fabrics* in the pocket on the INSIDE BACK COVER.





Where did this guy come from? Well,
like the Catera, he was hatched in
Germany. And he's headed straight for the

OUR MASCOT

Cadillac Crest. When he hops aboard,
he'll be zigging to the right and heading
off in a whole new direction for Cadillac.

This feisty feathered friend symbolizes
the spirit of the new Catera. Slightly
sophisticated, always irreverent, he

presents a whole
new generation of

luxury for a whole new generation of
drivers. Come on along for the ride.

It's going to be fun.



When you think of Catera, think in terms of 200-horse-powerful...and a "smart" electronic transmission that snaps the gears from 0-60 mph in 8.5 seconds flat. Then ponder 4-wheel independent

CATERA IS HOT

suspension, full-range traction control, 4-wheel disc brakes with ABS and Speed-Sensitive Steering. Cap your reflection with the handling agility of a cutting horse. That's Catera's concept of "hot." It includes a 3.0L V6 engine with 24 valves, dual overhead cams and direct fuel injection. There's even a special air induction system for optimum power at any speed or rpm. And like we said, the "brain" of Catera's 4-speed automatic transmission learns constantly, adjusting shift points to your driving style and road conditions. Consider yourself a quick study? Touch a button for sport-shift mode. And real fun is only a "zig" away.



MY KINGDOM FOR A HORSE...

Ever wonder where "horsepower" came from? The word was coined more than a century ago over in England. James Watt wanted to give people an idea of what his steam engine could do. So, he picked on the competition: a horse. Watt estimated that a dray horse, working at a gin for 8 hours, averaged 22,000 foot pounds per minute. Watt added 50% to this calculation for good measure and applied it to his steam engine. In the automotive world, 1 hp equals 550 ft-lbs of work per second. Catera's engine makes 200 hp. A kingly amount in anyone's book.



Extraordinary accommodation is part of the Catera fun.

Catera's leg, head, knee and trunk room are among the best

in its class. Another thing: The driver's seat is particularly

comfortable because its "hip point" has been raised

CATERA IS COMFORT

for the optimum driving position. This seat also

features lumbar support plus power tilt, recline

and height adjustment. A power memory seat

that adjusts for three drivers, including their

inside and outside mirror settings, is featured

in the leather-appointed model. Heated front

and rear seats are available. The front console

houses dual, retractable cupholders. In back, the

rear center armrest folds down for trunk/cabin

pass-through of long cargo. For larger loads, both

rear seatbacks can be folded down for complete

trunk/rear seat carrying capacity...just in case you

prefer surfboards over golf clubs.



ALL INTERIORS SHOWN IN THIS CATALOG ARE THOSE OF CATERA'S LEATHER-APPOINTED MODEL.



WINDLESS IN SEATTLE?

What isn't in a great luxury automobile enhances your comfort, too. Consider wind noise. Or, more precisely, the lack of it. Outside rearview mirrors and windshield wipers are common sources of wind noise. Particularly at higher speeds. So, engineers tested and retested Catera at up to 125 mph to optimize hood, wiper and mirror designs...as well as cabin silence. Even in Seattle.



Extraordinary accommodation is part of the Catera fun.

Catera's leg, head, knee and trunk room are among the best

in its class. Another thing: The driver's seat is particularly

comfortable because its "hip point" has been raised

CATERA IS COMFORT

for the optimum driving position. This seat also

features lumbar support plus power tilt, recline

and height adjustment. A power memory seat

that adjusts for three drivers, including their

inside and outside mirror settings, is featured

in the leather-appointed model. Heated front

and rear seats are available. The front console

houses dual, retractable cupholders. In back, the

rear center armrest folds down for trunk/cabin

pass-through of long cargo. For larger loads, both

rear seatbacks can be folded down for complete

trunk/rear seat carrying capacity...just in case you

prefer surfboards over golf clubs.

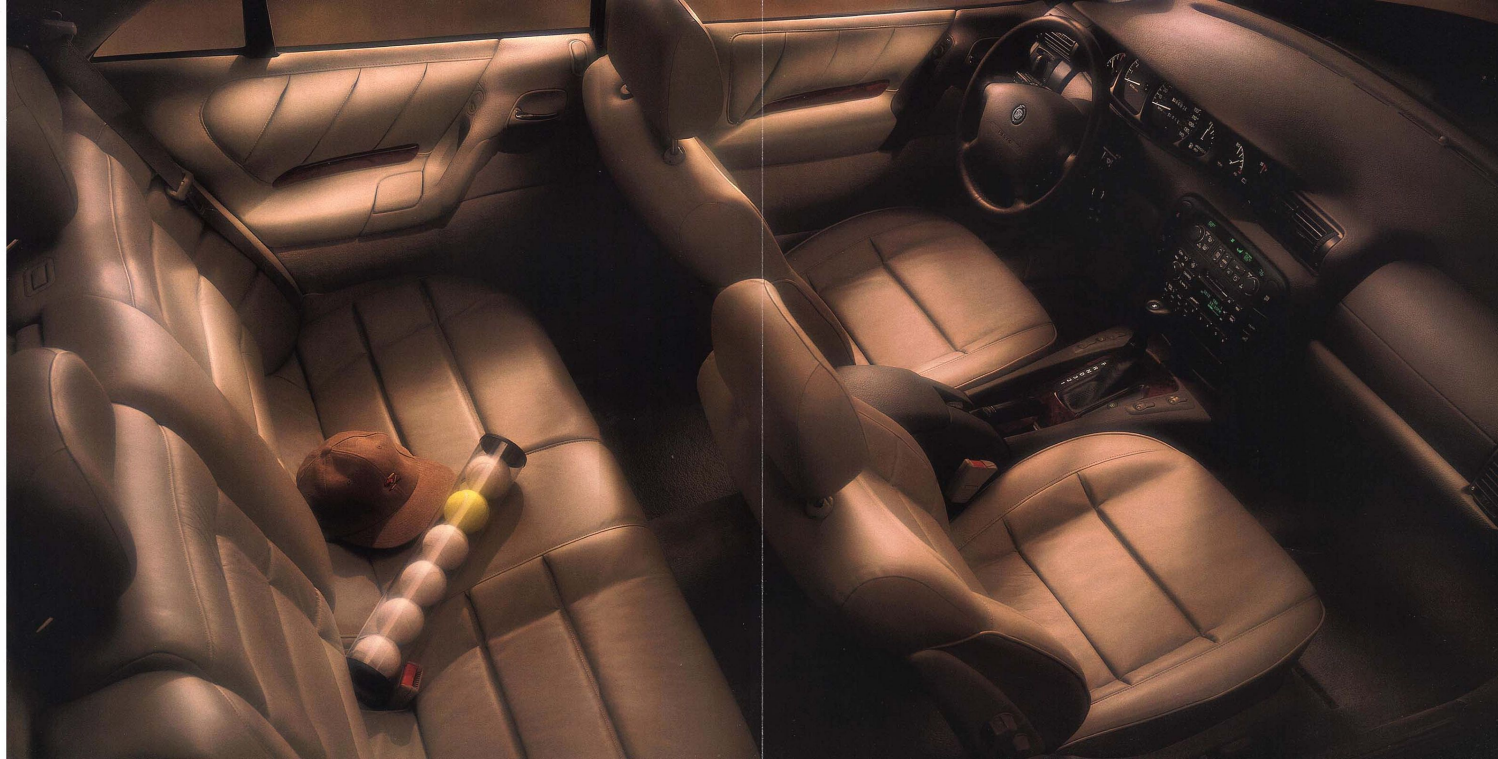


ALL INTERIORS SHOWN IN THIS CATALOG ARE THOSE OF CATERA'S LEATHER-APPOINTED MODEL.



WINDLESS IN SEATTLE?

What isn't in a great luxury automobile enhances your comfort, too. Consider wind noise. Or, more precisely, the lack of it. Outside rearview mirrors and windshield wipers are common sources of wind noise. Particularly at higher speeds. So, engineers tested and retested Catera at up to 125 mph to optimize hood, wiper and mirror designs...as well as cabin silence. Even in Seattle.



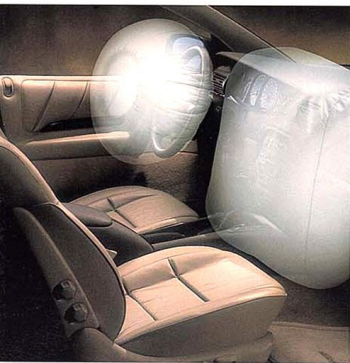


The center console contains several control units. At the top are two climate control units with digital displays showing 68°F and 76°F. Below these is a Bose stereo unit with a digital display showing "CD12 TRK 1 12:10PM". The gear shift lever is positioned in front of the stereo unit. To the right of the gear shift is a handbrake. The gear shift lever has a "P" (Park) position and a "D" (Drive) position.



No automobile ever designed can avoid a collision. Only the person behind the wheel can do that. But Catera has technology and advanced engineering to help you stay out of trouble...or in the inescapable situation, help you survive it. Catera's dual

CATERA IS SAFETY



front and dual side air bags* are a factor here. In addition, Catera's body structure is specifically engineered to help absorb and distribute impact energy. Around the cabin area, an effective internal "cage" helps protect occupants. There are also dual steel bar reinforcements in all four doors. In the event of a severe collision, the whole front subframe dissipates force by moving along specifically designed energy-absorbing guides. Even the drive shaft soaks up energy by collapsing like a telescope. Over 100 cars were crash tested in the lab and on the computer to get this far. And we're not stopping there.



ACUTE POINT ON AN OBTUSE SUBJECT.

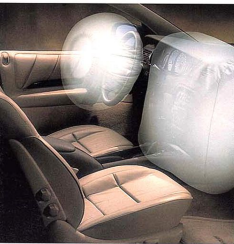
Catera has set crash test benchmarks that go beyond federal safety standard requirements. One test, the "offset frontal impact," tells us how Catera withstands an angled collision with a stationary object. The test simulates those slightly "out-of-plumb" crashes that occur out there. These and other test results are used to engineer structural safety into every Catera.

*SIDE AIR BAGS WILL BE STANDARD EQUIPMENT EARLY IN 1997.
ALWAYS WEAR SAFETY BELTS, EVEN WITH AIR BAGS.



No automobile ever designed can avoid a collision. Only the person behind the wheel can do that. But Catera has technology and advanced engineering to help you stay out of trouble...or in the inescapable situation, help you survive it. Catera's dual

CATERA IS SAFETY



front and dual side air bags* are a factor here. In addition, Catera's body structure is specifically engineered to help absorb and distribute impact energy. Around the cabin area, an effective internal "cage" helps protect occupants. There are also dual steel bar reinforcements in all four doors. In the event of a severe collision, the whole front subframe dissipates force by moving along specifically designed energy-absorbing guides. Even the drive shaft soaks up energy by collapsing like a telescope. Over 100 cars were crash tested in the lab and on the computer to get this far. And we're not stopping there.



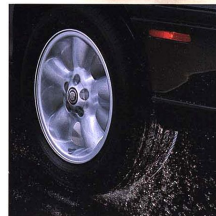
ACUTE POINT ON AN OBTUSE SUBJECT.

Catera has set crash test benchmarks that go beyond federal safety standard requirements. One test, the "offset frontal impact," tells us how Catera withstands an angled collision with a stationary object. The test simulates those slightly "out-of-plumb" crashes that occur out there. These and other test results are used to engineer structural safety into every Catera.

*SIDE AIR BAGS WILL BE STANDARD EQUIPMENT EARLY IN 1997. ALWAYS WEAR SAFETY BELTS, EVEN WITH AIR BAGS.



Precipitation and reduced visibility go hand-in-hand. That's why Catera's headlamps automatically come on once the wipers have been on for 20 seconds.



Traction is key to safe driving. So we've given Catera electronic full-range traction control, 4-wheel anti-lock brakes and specific Goodyear Eagle RS all-season tires.



Catera's front seats feature safety belt pretensioners. In a collision, they're activated by the air bag sensor system to snug both lap and shoulder belts, which help keep you firmly in position.



Catera's power windows and optional sunroof are equipped with pinch-guard. When this system senses resistance to closure (like fingers), window travel is immediately reversed.



Catera features huge 4-wheel disc brakes. Front discs are 11.6 inches in diameter; rear discs are 11.2 inches across. Designed for Autobahn speeds, they can bring Catera from 60 mph to a dead stop in just 132 feet.



Ice is an insidious foe. It will form in shade or on bridges when the rest of the road is just wet. To alert you to this potential, Catera is equipped with an ice warning indicator that flashes when the outside air temperature hovers around freezing.

Catera Safety Equipment Break-away inside rearview mirror □ Dual sun visors □ Energy-absorbing instrument panel □ Energy-absorbing steering column □ Front and rear crush zones □ Head restraints, front and rear □ Interlocking door latches □ Laminated windshield glass □ Manual lap safety belt, center seat position □ Manual lap/shoulder safety belts, outboard front and rear seat positions □ Passenger guard inside door lock handles □ Pressure lock radiator cap □ Safety armrests □ Safety belt use reminder system □ Security door locks and door retention components □ Side door beams □ Driver and front passenger Supplemental Inflatable Restraints (air bags) □ Tempered safety glass, side and rear windows □ Anti-lock brakes □ Automatic daytime running lamps □ Back-up lamps □ Brake system dual master cylinder and warning light □ Brake transmission shift interlock □ Center high mounted stop lamp □ Cornering lamps □ Directional signal control □ Four-wheel disc brakes

□ Door open warning lights/reflectors □ Dual action hood latch □ Fog lamps □ Four-way hazard warning flashers □ Halogen headlamps □ Illuminated heater and defroster controls □ Illuminated windshield wiper and washer controls □ Inside electrochromic rearview mirror □ Low glare windshield molding, wiper arms and blades □ Maintenance-free battery □ Heated, power outside rearview mirrors □ Parking lamps □ Rear window defogger □ Safety road wheel rims □ Side marker lamps and reflectors □ Side window defogger, front □ Starter safety switch □ Steering wheel audio system controls □ Tinted glass windshield □ Tire tread wear indicators □ Traction control, full-range □ Windshield defrosters and washers □ Wiper-activated headlamps



Cool? Pick your interpretation. But allow us to suggest "contemporary," "well-designed" or "accommodating." Turn up Catera's AM Stereo/FM Stereo audio system with 8 speakers and cassette, and "jammin'"

CATERA IS COOL

could easily come to mind. Then turn it up even more with an optional Bose system. Engineers used computer models to create a specially balanced, premium system with 6 high-efficiency amplifiers, AM/FM receiver and cassette deck. A trunk-mounted 12-disc CD changer is available. Catera can also deliver "cool" or "hot" through its dual-zone climate control system. This means the driver and front passenger are able to tailor their environment individually, up to a 30° differential. An optional garage door opener is part of the inside rearview mirror. Touch one of three buttons on the bottom and you can open three doors, gates or what-have-you. At home...or the executive garage.

BOSE KNOWS...

A British rock group's album once warned listeners of the danger in high-decibel sound, then gave them the option to "turn it up." Cool. Maybe. Maximize Watts, and your bass often turned to garble. For Catera's optional sound system, Bose used computer programs to create a 3-dimensional picture of how sound would behave in Catera...all so you can once again ignore prudent scientific warnings, "turn it up" and enjoy distortion-free satisfaction.



Cool? Pick your interpretation. But allow us to suggest "contemporary," "well-designed" or "accommodating." Turn up Catera's AM Stereo/FM Stereo audio system with 8 speakers and cassette, and "jammin'"

CATERA IS COOL

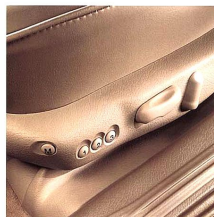
could easily come to mind. Then turn it up even more with an optional Bose system. Engineers used computer models to create a specially balanced, premium system with 6 high-efficiency amplifiers, AM/FM receiver and cassette deck. A trunk-mounted 12-disc CD changer is available. Catera can also deliver "cool" or "hot" through its dual-zone climate control system. This means the driver and front passenger are able to tailor their environment individually, up to a 30° differential. An optional garage door opener is part of the inside rearview mirror. Touch one of three buttons on the bottom and you can open three doors, gates or what-have-you. At home...or the executive garage.

BOSE KNOWS...

A British rock group's album once warned listeners of the danger in high-decibel sound, then gave them the option to "turn it up." Cool. Maybe. Maximize Watts, and your bass often turned to garble. For Catera's optional sound system, Bose used computer programs to create a 3-dimensional picture of how sound would behave in Catera...all so you can once again ignore prudent scientific warnings, "turn it up" and enjoy distortion-free satisfaction.



The driver's door has the only keylock in Catera. That's to minimize lock cylinder ice-up and theft opportunities. And thanks to Remote Keyless Entry, you may never turn the key in that one! Just press the proper key fob button to lock or unlock the doors or unlock the trunk lid or fuel filler door from about 30 feet away.



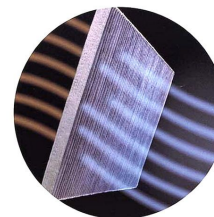
Your personal driver's seat and mirror positions (inside and both outside mirrors) are as easy as 1, 2, 3 with the memory function standard in Catera's leather-appointed model. It has settings for up to three drivers. Simply press and hold one of the three memory buttons on the seat's left lower edge. Cool.



At first blush, heated outside rearview mirrors seem like the ultimate techno-decadence. But think about it. Frost-free mirrors help you see better and drive more safely. And, because you never have to scrape them manually, the setting stays where you expect it.



Here's our entry in America's cup race. Well, it's actually one bid for two cups. But you may not even see this cutting-edge cupholder if you just peek inside a Catera. That's because it's hidden inside the front armrest, waiting to pop into position with the flick of a finger.

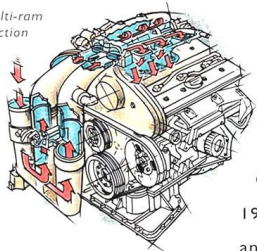


The amount of dirt that an engine air filter strains from the atmosphere can be surprising. And, while you may not breathe the same volume of air as an engine, it's certainly the same air. But relax. Catera's cabin air passes through a 3-stage filter to help remove pollen and dust.



Those gauche glove compartment tragedies have befallen us all. The sparkling water descends to room temperature. The chocolate turns to syrup. And that film in your Leica camera bakes like a biscuit. Well, it isn't likely to happen while you are driving a Catera. Not in its air-conditioned glove box.

Multi-ram induction

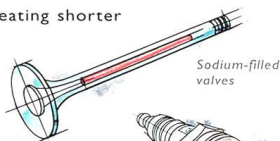


There are thousands of parts in a Catera. And some showcase technology that sets this car apart in a world of luxury sedans.

Catera's engine is a prime example. It's a 3.0L V6 with 200 hp and 192 ft-lbs of torque. A lot of that power is available to you at most any speed, thanks to a special "multi-ram" induction system. It works

CATERA IS PERFORMANCE & TECHNOLOGY

kind of like the valves of a trumpet. By opening and closing a trio of valves in various combinations, the oncoming rush of air takes a shorter, or longer, path through the intake tubing creating shorter or longer pulses of air. This also "times" the air's arrival very closely to the opening of the intake valves. Thus, the flow of air is smoothed out, and more air is packed into each ignition cycle. More air means more power. Deeper within Catera's engine you'll find sodium-filled exhaust valves from the racing world. These help dissipate heat from the combustion chamber. This means denser air/fuel mixtures,



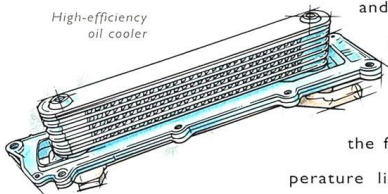
Sodium-filled valves



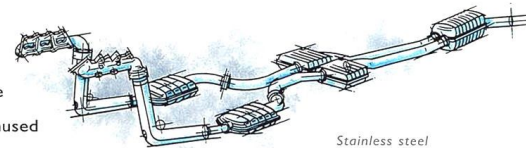
Triple-tipped spark plugs

and denser charges mean more power! It works like this: Each exhaust valve is drilled out, filled with a sodium powder, then forged closed again. The powder melts into a liquid while you're driving and sloshes up and down between the face of the valve and the lower stem. This transfers temperature like a hyperactive heat pump, cooling the combustion chamber and enhancing efficiency. Inside each combustion chamber are Catera's incredibly durable triple-tipped spark plugs. When new, the ignition spark jumps from just one of these "tips" to the center

High-efficiency oil cooler

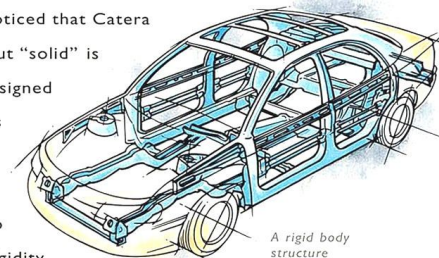


electrode. As the first tip wears out, the jumping spark switches over to the next, unused tip. More wear, and the third tip gets its turn. All together, the three tips help keep your ignition spark powerful and your scheduled tune-up interval at 100,000 miles.* And speaking of



Stainless steel dual exhaust

the long haul, Catera's 10,000-mile scheduled oil change interval** is primarily due to its highly effective oil cooler. It's in the cylinder bank "V" of Catera's engine and is constantly bathed in coolant. This does a yeoman's job of keeping your oil cool and your maintenance budget low. Catera also has a real dual exhaust system made from durable stainless steel. And by now you've probably noticed that Catera has a pretty nice body. Shape is one thing. But "solid" is another. Catera's body structure has been designed to feel tight and solid as you put it through its paces. The structure is especially strong and rigid around the passenger compartment, to help protect occupants, while helping to absorb energy from a collision. Structural rigidity also helps in reducing noise and vibration. But Catera does have good vibrations. As part of an available 8-speaker audio system,



A rigid body structure

Bose engineers used computers to create a 3-dimensional picture of how sound waves would behave in Catera. They even took tire resonance frequencies into account! Now, that's what we call road music.



Acoustically balanced Bose sound system

*THIS PERIOD VARIES WITH USE AND DRIVING CONDITIONS.
**FOLLOWING THE INITIAL 5000-MILE BREAK-IN CHANGE.

CATERA FEATURES & OPTIONS

■ STANDARD FEATURES, ALL CATERAS

INTERIOR

Air bags, driver and front passenger
Ashtray, front, illuminated
Brake/transmission shift interlock
Cabin air quality filter
Carpeted trunk
Child lockout, rear windows
Child seat restraints, outboard seats
Child security locks, rear doors
Cigarette lighters, front and rear
Climate control, dual-zone
Climate control, electronic
Cruise control
Cupholders, in center console
Driver seat adjuster, 8-way power
Glove box, illuminated, lockable, air conditioned
Headrests, front and rear
Ice warning indicator
Illuminated entry
Lumbar supports, manual
Map lights and rear reading lights
Radio, AM Stereo/FM Stereo/cassette/8 speakers
Rear center armrest, folding
Rear seatback, folding
Rear window defroster
Rearview mirror, inside, electrochromic
Retained accessory power
Safety belts, five-position height adjustment, all outboard seats
Safety belt, manual, lap, center seat position

Safety belts, manual, 3-point, all outboard seats
Sport shift select mode
Steering wheel
—adjustable tilt
—audio system controls
—leather-wrapped
Third-gear start capability
Trunk package net
Vanity mirrors, illuminated
Windows, power, express up and down with pinch-guard

EXTERIOR

Daytime Running Lamps
Door locks, auto, programmable
Exhaust tips, chrome
Front fog lamps
Fuel door unlock, remote
Gas cap tether
Headlamps, wiper-activated
Level control, automatic
Lights, hazard warning
Outside rearview mirrors
—break-away
—power, heated
Remote Keyless Entry
Spare tire, full-size
Speed-Sensitive Steering
Tinted solar glass windows
Transponder key theft-deterrent system
Trunk release, remote
Twilight Sentinel
Unibody construction
Wheels, 7-spoke cast aluminum, painted
Windshield washer nozzles, heated

■ STANDARD FEATURES, CLOTH MODEL

Front passenger fold-down seat
Seating areas, cloth

■ STANDARD FEATURES, LEATHER-APPOINTED MODEL

Front passenger seat adjuster, 8-way power
Memory function, 3 position
—driver's seat
—inside rearview mirror
—outside rearview mirrors
Seating areas, leather
Theft-deterrent system, audible

■ OPTIONAL FEATURES, ALL CATERAS

Bose audio system, AM Stereo/FM Stereo/cassette/8 speakers
CD changer, 12-disc, trunk mounted (dealer installed)
Cellular phone, integrated portable (dealer installed)
Engine block heater (dealer installed)
Garage door opener, 3-channel
Seats, heated front and rear
Sunroof, electric
Wheels, 5-spoke cast aluminum, chrome finished
Wheels, 5-spoke cast aluminum, painted

■ ENGINE

3.0L 24-valve DOHC V6 (54")
200 hp, 192 ft-lbs torque
Cast iron block, aluminum heads
Compression ratio: 10.0:1
Coolant: DEX-COOL, long life, 150,000 miles*
Dual, stainless steel exhaust system
Fuel injection
Machined intake/exhaust ports
On-Board Diagnostics II
Recommended fuel: Premium
Scheduled tune-up interval: 100,000 miles**
Spark plugs: Triple tipped
Tuned, variable induction system

■ DRIVELINE

Final drive ratio: 3.9:1
Four-speed electronic automatic transmission
Ratios:
1st: 2.856:1
2nd: 1.62:1
3rd: 1.0:1
4th: .723:1
Front engine/rear-wheel drive
Transmission fluid: DEXRON-III, lifetime**

■ SUSPENSION

Brakes:
Power: 4-wheel disc
Front: 11.65 inches
Rear: 11.26 inches
Anti-lock system, 4-wheel
Fully independent:
Front: MacPherson strut, coil spring
Rear: Multi-link, coil spring
Stabilizer bars:
Front: 1.02 inch
Rear: .59 inch
Steering:
Type: Roller ball, recirculating
Speed-Sensitive
Ratio, overall: 14.8:1
Tires: P225/55HR16 Goodyear Eagle, M+S
Traction control, engine management
Turning circle: 34.12 inches
Turns, lock-to-lock: 3
Wheels: 16" x 7" cast aluminum

■ PERFORMANCE

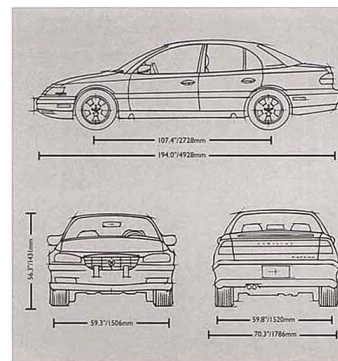
0-60 mph: 8.5 seconds
60-0 braking: 132 feet
EPA estimated MPG: 18 city/25 hwy.
Standing 1/4 mile: 16.5 seconds
Top speed: 125 mph

CAPACITIES

Oil: 5.28 quarts
Coolant: 10.57 quarts
Fuel: 18 gallons
Trunk: 14.5 cu. ft.
Battery: 12 volt
Towing: 1,000 lbs.
Tire inflation: 32 psi (all)
Curb weight: 3,770 lbs.

INTERIOR DIMENSIONS

Head room:
Front: 38.6"/981mm
Rear: 37.8"/960mm
Hip room:
Front: 54.9"/1394mm
Rear: 55.2"/1401mm
Leg room:
Front: 42.2"/1071mm
Rear: 37.5"/953mm
Shoulder room:
Front: 54.6"/1388mm
Rear: 55.9"/1419mm
Seating capacity: 2/3



Catera Standard
16"x7" painted 7-spoke
aluminum wheel.

Catera Optional
16"x7" chrome finished
5-spoke aluminum wheel.

Catera Optional
16"x7" chrome finished
5-spoke aluminum wheel.



Standard 8-speaker
audio system with AM
Stereo/FM Stereo and
cassette. CD changer
optional.



Optional Bose 8-speaker
audio system with AM
Stereo/FM Stereo and
cassette. CD changer
optional.



Analog Instrument Panel: Speedo, tach,
volts, coolant, odometer, oil pressure
plus 19 "need to know" telltales.

*THIS IS A RECOMMENDED SERVICE INTERVAL. ACTUAL PERFORMANCE MAY VARY. SEE OWNER'S MANUAL FOR LIMITATIONS.
**THIS PERIOD VARIES WITH USE AND DRIVING CONDITIONS.

CATERA FEATURES & OPTIONS

■ STANDARD FEATURES, ALL CATERAS

INTERIOR

Air bags, driver and front passenger
Ashtray, front, illuminated
Brake/transmission shift interlock
Cabin air quality filter
Carpeted trunk
Child lockout, rear windows
Child seat restraints, outboard seats
Child security locks, rear doors
Cigarette lighters, front and rear
Climate control, dual-zone
Climate control, electronic
Cruise control
Cupholders, in center console
Driver seat adjuster, 8-way power
Glove box, illuminated, lockable,
air conditioned
Headrests, front and rear
Ice warning indicator
Illuminated entry
Lumbar supports, manual
Map lights and rear reading lights
Radio, AM Stereo/FM Stereo/cassette/
8 speakers
Rear center armrest, folding
Rear seatback, folding
Rear window defroster
Rearview mirror, inside, electrochromic
Retained accessory power
Safety belts, five-position height
adjustment, all outboard seats
Safety belt, manual, lap, center seat
position

Safety belts, manual, 3-point, all
outboard seats

Sport shift select mode
Steering wheel

—adjustable tilt
—audio system controls
—leather-wrapped
Third-gear start capability
Trunk package net
Vanity mirrors, illuminated
Windows, power, express up and down
with pinch-guard

EXTERIOR

Daytime Running Lamps
Door locks, auto, programmable
Exhaust tips, chrome
Front fog lamps
Fuel door unlock, remote
Gas cap tether
Headlamps, wiper-activated
Level control, automatic
Lights, hazard warning
Outside rearview mirrors
—break-away
—power, heated
Remote Keyless Entry
Spare tire, full-size
Speed-Sensitive Steering
Tinted solar glass windows
Transponder key theft-deterrent system
Trunk release, remote
Twilight Sentinel
Unibody construction
Wheels, 7-spoke cast aluminum, painted
Windshield washer nozzles, heated

■ STANDARD FEATURES, CLOTH MODEL

Front passenger fold-down seat
Seating areas, cloth

■ STANDARD FEATURES, LEATHER-APPOINTED MODEL

Front passenger seat adjuster,
8-way power
Memory function, 3 position
—driver's seat
—inside rearview mirror
—outside rearview mirrors
Seating areas, leather
Theft-deterrent system, audible

■ OPTIONAL FEATURES, ALL CATERAS

Bose audio system, AM Stereo/FM
Stereo/cassette/8 speakers
CD changer, 12-disc, trunk mounted
(dealer installed)
Cellular phone, integrated portable
(dealer installed)
Engine block heater (dealer installed)
Garage door opener, 3-channel
Seats, heated front and rear
Sunroof, electric
Wheels, 5-spoke cast aluminum,
chrome finished
Wheels, 5-spoke cast aluminum, painted

CATERA VALUES

OWNER PRIVILEGES

It's a privilege for us to sell Catera and to stand behind every car we sell. We also want our Catera customers to feel appreciated. That's why we view these "privileges" more like *accolades*. We're not granting them to you. You deserve them for investing your money in a new Catera. See your dealer for full details, and take advantage of these privileges virtually anywhere in the U. S.

■ **Roadside service** is available 24 hours a day by phoning 1-800-882-1112. It's free for the first 48 months or 50,000 miles of ownership. After the warranty period, roadside service is still available for a fee.

■ **Emergency road service** is also available 24 hours a day. It can help with flat tires, lost keys, empty fuel tanks and more. After the warranty period, emergency roadside service is still available for a fee.

■ **Trip interruption protection** is there to cover hotel, food and even alternate transportation expenses that stem from a warranted repair. It extends for 48 months or 50,000 miles, too.

■ **Warranty protection** comes in the form of GM's 48-month/50,000-mile bumper-to-bumper no-deductible limited warranty. Body rust-through is covered for 6 years/100,000 miles. Great coverage, but we hope you never need it.

■ **Alternate transportation** is always available at your Catera dealer when your vehicle is in for a warranty repair. If your schedule permits, you can wait in our customer lounge.

■ **Gold Key Delivery** is a Cadillac tradition, and we're extending it to Catera. This system includes a personal familiarization with your new Catera, introduction to key dealership personnel and a complete package of ownership materials.

PURCHASE & LEASE OPTIONS

We're flexible. And if buying Catera appeals to you, we have some important suggestions. Should you prefer leasing, we have great programs for that, too. Each course has its advocates. But, you decide.

■ **Financing through GMAC** has helped millions of people own or lease Cadillac automobiles. Chances are it can help you own or lease a Catera. Just ask your sales representative.

■ **SmartLease** allows you to acquire a new Catera more frequently, minimize initial costs and lower monthly payments, compared to purchasing. It can also be a tax advantage. Consult your accountant for those details.

■ **SmartLease Plus** has all the advantages of SmartLease, but without the tedious bother of monthly payments. That's because you pay a single lease payment, which represents the total of all your lease payments.

■ **The GM Card** allows you to apply all those bonus Earnings toward the purchase or lease of a new Catera! You've probably been piling this equity up for years without even realizing it. Now it's pay-back time.

■ **The GM Protection Plan** is available for Catera. Technically, it's an extended service contract, but it covers almost all of the same things your warranty does. Only for a lot longer: up to 6 years or 100,000 miles from the date of your Catera's first delivery or use. Worth checking into.



CATERA WARRANTY

THE GM 4-YEAR/

50,000-MILE GOLD KEY BUMPER

TO BUMPER LIMITED WARRANTY COVERS

REPAIRS FOR ANY NEW CATERA, INCLUDING

LABOR AND PARTS, TO CORRECT ANY DEFECTS

IN MATERIAL OR WORKMANSHIP OCCURRING DURING

THE WARRANTY PERIOD. THE COMPLETE VEHICLE,

INCLUDING TIRES, WILL BE COVERED FOR 4 YEARS

OR 50,000 MILES, WHICHEVER COMES FIRST, EXCEPT

FOR ADJUSTMENTS AND NORMAL MAINTENANCE

ITEMS. PLUS FREE TOWING AND A PORTFOLIO OF

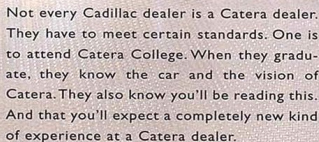
OTHER SERVICES. THERE IS NO DEDUCTIBLE ON

ANY CATERA WARRANTY. SEE YOUR CATERA

DEALER FOR TERMS OF THIS

LIMITED WARRANTY.

CATERA
CATERA



CADILLACUS QUI ZIGAT.

A: Catera.

A: Catera.

A: Catera.

A: Catera.

A: Catera.

A: Catera.



CATERA COLLEGE CONSUMER POP QUIZ

CATERA COLLEGE



Not every Cadillac dealer is a Catera dealer. They have to meet certain standards. One is to attend Catera College. When they graduate, they know the car and the vision of Catera. They also know you'll be reading this. And that you'll expect a completely new kind of experience at a Catera dealer.



CADILLACUS QUI ZIGAT.

Q: Body stiffness is crucial to an automobile's "solid" feel and precise handling. What car is designed to feel as solid as a Mercedes-Benz?

A: Catera.

Q: Name a luxury car that has an engine that features scheduled 100,000-mile tune-ups, 10,000-mile oil change intervals and more horsepower than a BMW 328i.

A: Catera.

Q: Real performance cars have 4-wheel independent suspension and big, 4-wheel disc brakes. What car has all that *plus* ABS and traction control?

A: Catera.

Q: Name a carline that's making it pleasant, comfortable and fun for people to buy cars.

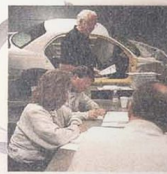
A: Catera.

Q: After driving our competition, which car combines the best traits of their ride and performance?

A: Catera.

Q: What personal luxury sedan has set up an entire college to train its dealers to take new directions, turn the corner and help customers feel that shopping for a car should actually be fun?

A: Catera.



IMPORTANT WORDS ABOUT THIS CATALOG

We have tried to make this catalog as comprehensive and factual as possible. We reserve the right, however, to make changes at any time, without notice, in prices, colors, materials, equipment, specifications, models and availability. Since some information

WARRANTY

The GM 4-year/50,000-mile Gold Key Bumper to Bumper limited warranty covers repairs for any new Catera, including labor and parts, to correct any defects in material or workmanship occurring during the warranty period. The complete vehicle, including

CATERA COLOR CHIPS

EXTERIOR COLOR SELECTIONS

11 Ivory

14 Ocean

46 Forest

68 Sand



75 Cranberry



80 Ebony



86 Slate



97 Sage

LEATHER-APPOINTED MODEL SELECTIONS



HARRIET FAREN

FREDERICK CHEVROLET - CADILLAC - OLDSMOBILE - GEO - TOYOTA
1505 Quentin Road, Lebanon, PA 17042

Residence
717/272-8118



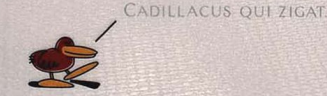
717/274-1461
800/222-5523

GET A CATERA!

CATERA COLLEGE CONSUMER POP QUIZ



Not every Cadillac dealer is a Catera dealer. They have to meet certain standards. One is to attend Catera College. When they graduate, they know the car and the vision of Catera. They also know you'll be reading this. And that you'll expect a completely new kind of experience at a Catera dealer.



Q: Body stiffness is crucial to an automobile's "solid" feel and precise handling. What car is designed to feel as solid as a Mercedes-Benz?

A: Catera.

Q: Name a luxury car that has an engine that features scheduled 100,000-mile tune-ups, 10,000-mile oil change intervals and more horsepower than a BMW 328i.

A: Catera.

Q: Real performance cars have 4-wheel independent suspension and big, 4-wheel disc brakes. What car has all that *plus* ABS and traction control?

A: Catera.

Q: Name a carline that's making it pleasant, comfortable and fun for people to buy cars.

A: Catera.

Q: After driving our competition, which car combines the best traits of their ride and performance?

A: Catera.

Q: What personal luxury sedan has set up an entire college to train its dealers to take new directions, turn the corner and help customers feel that shopping for a car should actually be fun?

A: Catera.



IMPORTANT WORDS ABOUT THIS CATALOG

We have tried to make this catalog as comprehensive and factual as possible. We reserve the right, however, to make changes at any time, without notice, in prices, colors, materials, equipment, specifications, models and availability. Since some information may have been updated since the time of printing, please check with your Catera dealer for complete details.

ENGINES

Cateras are equipped with engines produced by different operating units of GM, its subsidiaries or suppliers to GM worldwide.

ASSEMBLY

Cateras are assembled by different operating units of General Motors, its subsidiaries or suppliers to GM worldwide. Cateras incorporate thousands of components produced by different operating units of GM, its subsidiaries or suppliers to GM worldwide. We sometimes find it necessary to produce Cateras with different or differently sourced components than originally scheduled. All such components have been approved for use in Cateras and will provide the quality performance associated with the Catera name. Since some options may be unavailable when your vehicle is assembled, we suggest that you verify that your vehicle includes the equipment you ordered, or if there are changes, that they are acceptable to you.

UPDATED SERVICE INFORMATION

Catera regularly sends its dealers useful service bulletins about Catera products. Catera monitors product performance in the field. We then prepare bulletins for servicing our products better. Now you can get these bulletins, too. Ask your dealer. To receive ordering information, call toll-free 1-800-551-4123.

WARRANTY

The GM 4-year/50,000-mile Gold Key Bumper to Bumper limited warranty covers repairs for any new Catera, including labor and parts, to correct any defects in material or workmanship occurring during the warranty period. The complete vehicle, including tires, will be covered for 4 years or 50,000 miles, whichever comes first, except for adjustments and normal maintenance items. Plus free towing and a portfolio of other services. There is no deductible on any Catera warranty. See your Catera dealer for terms of these limited warranties.

CORROSION PROTECTION

Cateras are designed and built to resist corrosion. All body sheet metal components are warranted against rust-through corrosion for 6 years/100,000 miles. There is no deductible for rust-through repairs. Application of additional rust-inhibiting materials is not required under the corrosion coverage and none is recommended.

THEFT DETERRENCE

Every Catera includes a visible vehicle identification number, laser-etched VIN plate, theft-deterrent steering column lock, theft-deterrent key locking system and an ignition key removal audible reminder.

CATERA, the CATERA CREST, the CATERA DUCK, the CATERA SYMBOL, the CATERA LOGO, THE CADDY THAT ZIGS and DEX-COOL are trademarks of the General Motors Corporation. CADILLAC, the CADILLAC emblem, CADILLAC ROADSIDE SERVICE, GENERAL MOTORS, the GM emblem, GM PROTECTION PLAN, THE GM CARD, DEXRON and TWILIGHT SENTINEL are registered trademarks of the General Motors Corporation. CADILLAC OWNER PRIVILEGES is a service mark of the General Motors Corporation. GMAC and SMARTLEASE are registered trademarks of the General Motors Acceptance Corporation.

Litho in USA. Partially assembled in Mexico. ©1996 GM Corp. All Rights Reserved. Always wear safety belts, even with air bags. Always yield the right-of-way to low-flying ducks.



HARRIET FAREN

FREDERICK CHEVROLET - CADILLAC - OLDSMOBILE - GEO - TOYOTA
1505 Quentin Road, Lebanon, PA 17042

Residence
717/272-8118



717/274-1461
800/222-5523

GET A CATERA!

CATERA COLOR CHIPS

EXTERIOR COLOR SELECTIONS

11 Ivory



14 Ocean



46 Forest



68 Sand



75 Cranberry



80 Ebony



86 Slate



97 Sage

LEATHER-APPOINTED MODEL SELECTIONS



605 Shale



805 Ebony



825 Stone

CLOTH MODEL SELECTIONS



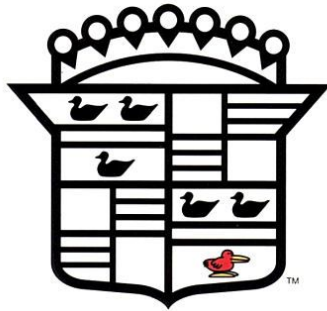
80D Ebony



82D Stone

COLOR CHIPS?
ANYBODY GOT
ANY DIP?





THE CADDY THAT ZIGS

