



XR6 AND XR8 SPECIFICATIONS, OPTIONS AND ACCESSORIES



Live it.

Ford provides the opportunity for you to personalise your car with a host of factory fitted options – or with Genuine Ford Accessories that can be fitted by your Ford Dealer. There are also some exciting options developed by Tickford, Ford's partner in performance engineering. In all cases, these options and accessories look right and fit correctly because they're manufactured with the same care and attention as your new Ford.

For added peace of mind, if fitted prior to delivery Genuine Ford Accessories are covered by Ford's 3 year/100,000 km 'Bumper to Bumper' warranty*. If fitted later by an Authorised Ford Dealer, they are covered for the remainder of your new car warranty or 12 months/20,000 km. Whichever is longer.



Cruise Control.
Helps maintain a constant speed on the open road. Disengages when brakes or clutch are applied. (Standard on XR6 VCT and XR8)



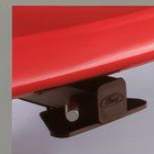
Air Conditioning.
This system offers welcome relief on hot days and rapid demisting in cold and damp conditions. (Standard on XR6 VCT and XR8)



CD Changer Kit.
This 6-stacker CD accessory retains the steering mounted audio controls. Forward mounted under passenger seat for ease of access.



Headlamp Guards.
Designed to avoid costly stone damage. Styled with the distinctive XR graphic, these guards follow the XR's contours.



Tow Bars.
Get things moving with a 1,600 kg towbar. Easy to remove 'no tools required' gooseneck with 'store' in the boot. Or there is a 1600 kg heavy duty towbar which can be upgraded to 2,300 kg capacity with the purchase of a load levelling kit.



Carpet Mats.
Plush carpet mats designed specifically for the XR range. Screw plugs hold the long-life, washable mats firmly in place.



Rear Louvre.
Keep your XR cool without restricting rear window vision.



Carry Bars.
Carry up to 75 kg. New locking mechanism enables quick 'no tools required' fitting and removal. Aerodynamically designed.

Other options available:

Front Sunvisor

Alarm Kit

Weathershield

Slimline

Weathershield

Sump Guard

Bonnet Protector

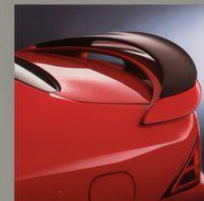
Bootliner



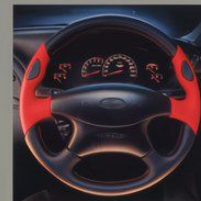
XR6 shown with optional 17" five spoke alloy wheels, P235/45 ZR tyres, Momo steering wheel and XR body kit.

* Conditions and exclusions apply. See your Authorised Ford Dealer for details.

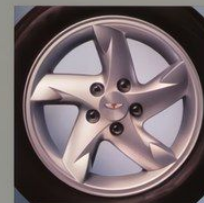
Tickford
PERFORMANCE PARTS



Body Kit.
XR body kit includes unique bi-plane spoiler.



Momo Steering Wheel.
Sculpted leather bound steering wheel offers the ultimate in feel and control.

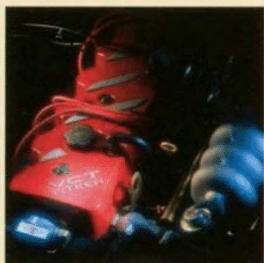


16" Wheels.
Aggressive five spoke alloy wheels (available at extra cost from December 1998).



Sunroof.
Precision crafted electric glass sunroof. Pop-up wind deflector reduces wind noise and buffeting.

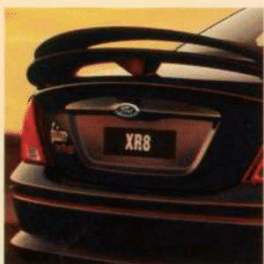
Mechanical



New 'Smart Start' is designed to make it impossible to engage your XR's starter motor while the engine is running.

- High performance 4.0 litre Intech OHC 6-cylinder engine
- 4.0 litre Intech OHC VCT 6-cylinder engine
- High performance 5.0 litre V8 engine
- Performance sports exhaust system
- 5 speed manual transmission
- 4 speed electronically controlled floor auto transmission with lock-up torque converter and "adaptive" shift
- Electronic engine control (EEC-V) system
- Ford integrated suspension solutions:
 - Fully independent double wishbone front sports suspension
 - Watts multilink rear sports suspension
 - Fully independent double wishbone rear sports suspension (IRS)
- Four wheel disc brakes
- Power assisted rack and pinion steering
- Limited slip differential, 3.45 axle ratio
- 'Fail Safe' cooling (six cylinder only)
- Smart Start

Exterior



The new age in car design. Ford's 'New Edge' philosophy refines aerodynamics and reduces wind noise.

- XR Body styling kit (including bi-plane spoiler)
- Prestige paint
- P225/50 R16 steel belted radial ply sports tyres
- 16" x 7.0" alloy road wheels
- 5 spoke 16" x 7.0" alloy road wheel option
- 17" x 7.0" alloy road wheels with P235/45 ZR17 tyres
- Unique front bumper and grille incorporating quad round halogen head lamps
- 'High jewel' tail lamps
- Body coloured rear spoiler (mono plane)
- Body coloured rear applique
- Wide-angle left hand rear view mirror
- Unique badging including Tickford wings
- Single oval chrome exhaust outlet
- Dual round chrome exhaust outlets

XR6 XR6 VCT XR8

●	—	—
—	●	—
—	—	●
●	●	●
●	●	●
○	○	○
●	●	●
●	●	●
●	—	—
—	●	●
●	●	●
●	●	●
●	●	●
●	●	●

NCO	NCO	NCO
●	●	●
●	●	●
●	●	●
●	●	●
●	●	●
●	●	●
●	●	●
●	●	●
●	●	●
●	●	—
—	—	●

A close-up of a car's speedometer. The needle is pointing to 0 on a scale from 0 to 240 km/h. The needle is red. The speedometer has a black face with white markings and numbers. The text "km/h" is visible in the center. The needle is at the 0 mark.

- Dual jet windscreen washers
- 2 speed front windscreen wipers with road speed sensitive variable intermittent, on-demand wash/wipe and demand wipe feature
- Rear window demister with timed auto switch off
- Leather wrapped steering wheel with audio volume and station controls
- Leather wrapped steering wheel with audio volume, station CD and cruise controls
- Momo 4 spoke steering wheel
- Adjustable rake and reach steering column
- Front and rear power windows
- Power window time delay after key off
- Prismatic day/night interior rear view mirror
- Dual intensity instrument panel illumination
- Ignition lock illumination
- Digital clock
- Comprehensive warning lights and audible warnings for selected functions
- Unique 240km/h speedometer, tachometer, fuel level, water temperature, oil pressure and battery voltage gauges
- LCD indicator for odometer, trip meter, 'Distance to Empty' and service due
- Remote fuel filler release
- Remote boot release
- Driver's footrest
- Driver's seat cushion tilt adjustment and thigh support
- Adjustable lumbar support for driver and passenger
- Adjustable front seat head restraints
- Sports bucket seats with sports cloth trim
- 60/40 split fold down rear seat back
- Vinyl door trims with cloth insert
- Map pockets in front door trims and behind front seats
- Front inertia reel seat belts with 'belt lockers'
- Rear inertia reel seat belts for all passengers
- Electrically adjustable rear view mirrors
- Passenger sunvisor vanity mirror
- Large centre console with centre armrest, retractable cup holder, coin slots, pen and CD/cassette storage
- Fast cool down CFC free air conditioning
- Mobile phone platform, wiring and antenna
- Interior lamps with auto-off battery saver feature

[illegible]

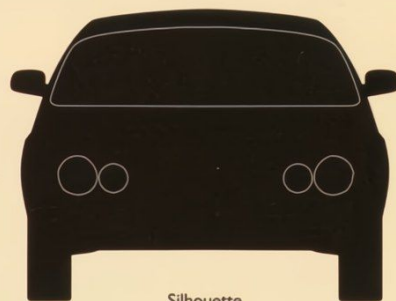
COLOURS AND FABRICS



Hot Chilli Red



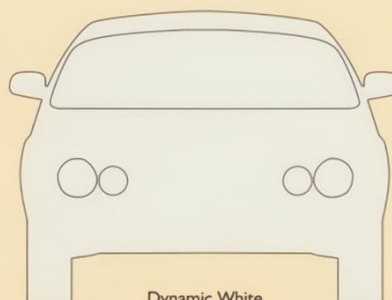
Oxford Green



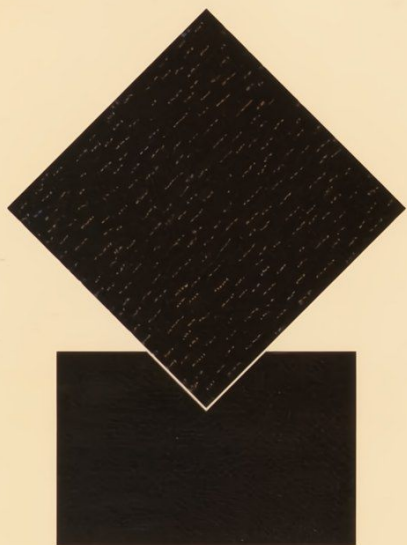
Silhouette



Galaxy



Dynamic White



Sanderson and Ebony cloth in Warm Charcoal.



Optional Momo steering wheel and air conditioning shown.

Engine

Engine Type	High Performance 4.0 litre Intech OHC 6-cylinder	4.0 litre Intech OHC VCT 6-cylinder	High Performance 5.0 litre V8
Engine Size (cc)	3984	3984	4985
Compression ratio	9.6:1	9.6:1	9.1:1
Max Power (DIN kW/rpm)	164kW/5000rpm	172kW/5000rpm	185kW/5000rpm
Max Torque (Nm/rpm)	366Nm/3150rpm	374Nm/3500rpm	412Nm/3500rpm
Battery	56Ah		
Engine management	Sequential multipoint electronic fuel injection controlled by EEC-V engine management system		

Transmission/Ratios

	Man HP6	Auto HP6	Man VCT	Auto VCT	Man V8	Auto V8
Gear ratios 1st	3.35	2.39	3.05	2.39	2.95	2.39
2nd	1.93	1.45	1.93	1.45	1.94	1.45
3rd	1.29	1.00	1.29	1.00	1.34	1.00
4th	1.00	0.68	1.00	0.68	1.00	0.68
5th	0.72	—	0.72	—	0.73	—
Reverse	3.15	2.09	3.15	2.09	2.76	2.09
Final Drive Ratio	3.45	3.45	3.45	3.45	3.45	3.45

Suspension

Front	Fully independent double wishbone sports suspension
Rear	XR6: Watts multilink sports suspension XR6 VCT and XR8: IRS – Fully independent double wishbone sports suspension

Brakes

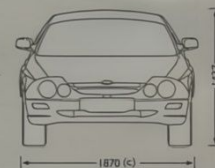
Front	Disc with asbestos free pads
Rear	Disc with asbestos free pads
ABS	Anti lock brakes – 3 channel

Fuel

	Man HP6	Auto HP6	Man VCT	Auto VCT	Man V8	Auto V8
Consumption ^(a)						
City Cycle (L / 100km)	12.0	12.5	12.5	12.5	14.5	14.5
Highway Cycle (L / 100km)	7.8	7.8	8.0	8.5	9.5	9.5
Fuel Grade	Regular unleaded					
Fuel Tank Capacity Petrol (litres)	68					

Towing Capacity (Subject to applicable legislation and tow bar capacity)

1600 kg Tow pack	Manual	1200 kg	Auto	1600 kg	Without the Ford approved
1600 kg Heavy Duty Tow pack	Manual	N/A	Auto	1600 kg	Tow pack, the towing capacity
2300 kg Heavy Duty Tow pack	Manual	N/A	Auto	2300 kg	is 500 kg



Dimensions

Exterior (mm)	
Front track	1566
Rear track	1547
Front overhang	918
Rear overhang	1197
Interior (mm)	
Front headroom	991
Front legroom	1081
Front shoulder room	1523
Front hiproom	1482
Rear headroom	978
Rear legroom	986
Rear shoulder room	1517
General	
Kerb weight (kg) ^(b)	1530
Luggage capacity (L)	460
Min. turning circle (m) – diameter	10.9

Footnotes

- These figures are obtained from controlled laboratory tests conducted by Ford Motor Company of Australia Limited to Australian Standard AS2877 - 1986 and are provided to assist you in comparing the fuel consumption of XR with other vehicles. The actual fuel consumption you achieve will depend, however, on many factors, including your driving habits, the prevailing conditions and your vehicle's equipment, condition and use.
- Approximate kerb weight for a Falcon XR6 fitted with the High Performance 4.0 litre Intech OHC 6-cylinder engine and 5 speed manual transmission.
- Excludes exterior side mirrors.

About this specification sheet. This sheet is designed to provide you with selected specification data for the Ford products which have been described in a general way in the relevant brochure. Because of changes in conditions and circumstances Ford* reserves the right, subject to all applicable laws, at any time, at its discretion, and without notice to discontinue or change the features, designs, materials, colours and other specifications and the prices of its products, and to either permanently or temporarily withdraw any such products from the market without incurring any liability to any prospective purchaser or purchaser. Because of variations which occur in manufactured products, all capacities, measurements, dimensions and weights quoted in the relevant brochure and this specification sheet should be taken as approximate only. Always consult an Authorised Ford Dealer for the latest information with respect to features, specifications, prices, optional equipment and availability before deciding to place an order. *FORD MOTOR COMPANY OF AUSTRALIA LIMITED A.C.N. 004 116 223 Registered office: 1735 SYDNEY ROAD, CAMPBELLFIELD, VICTORIA 3061. Printed July 1998 FCL 7086



Live it.