

SILVER STREAKS

the finest of the famous





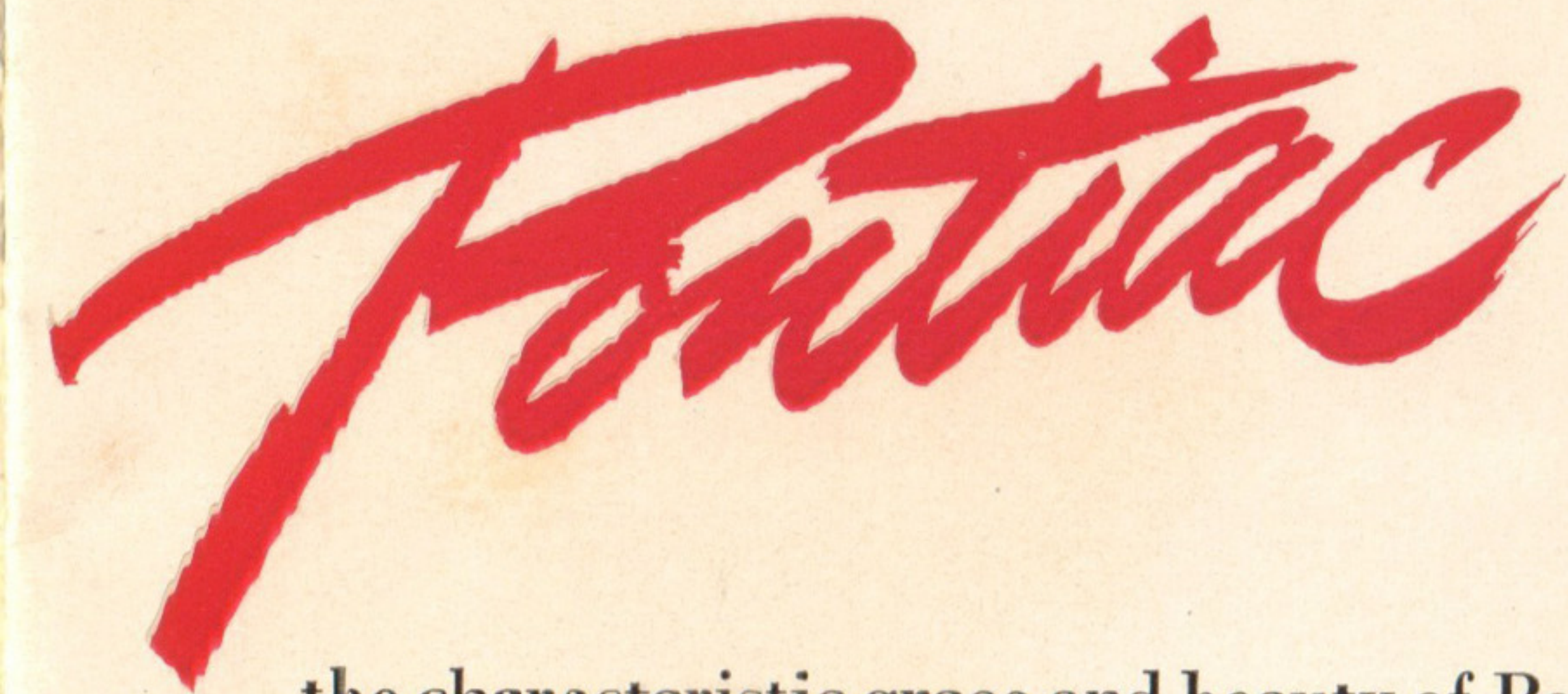
TRADITIONAL

Through the years, Pontiac's inherent excellence, its smooth, trouble-free operation, its outstanding durability, have resulted in a reputation for dependable performance and extra value.

The new 1946 Pontiac strengthens that fine reputation.

The new models have all the basic quality for which Pontiac has long been famous, plus an impressive list of improvements and refinements.

Deft appearance touches have been added to

The word "Pontiac" is written in a bold, red, cursive script. The letters are thick and fluid, with a slight shadow or outline effect, giving it a three-dimensional appearance. The logo is positioned in the upper left corner of the page.

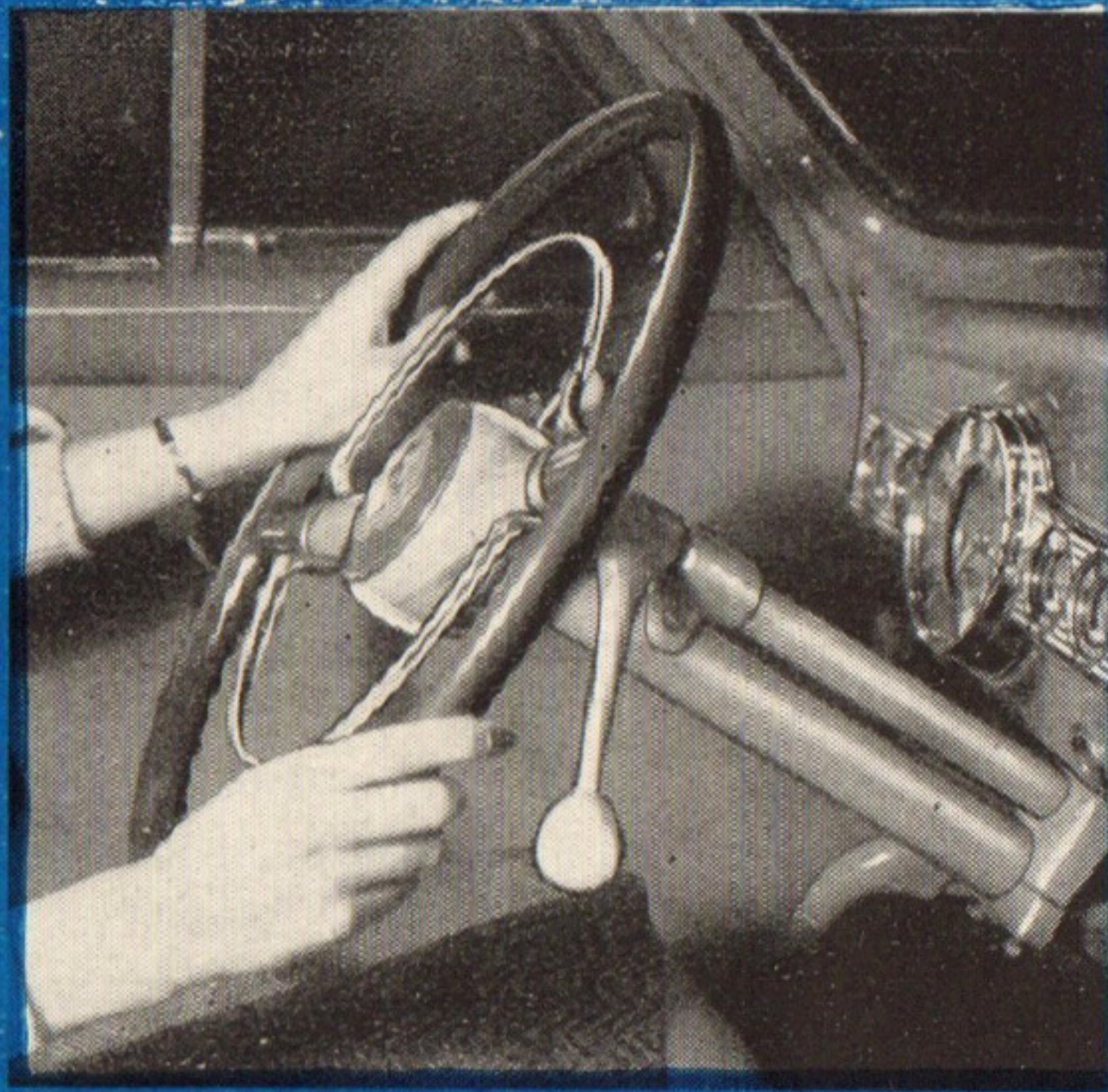
Q U A L I T Y . . .

the characteristic grace and beauty of Pontiac's ultra-modern styling, both inside and out. It has a new front-end appearance, new massive bumpers, new name plates, new colors, new trunk handle design, improved use of chrome decorations, new trim styling and interior hardware.

Mechanically the new Pontiac models have been refined. Impressive improvements have been made in manifolding, cooling, clutch, exhaust system, carburetor, rustproofing, chrome plating and in wheel rim design.

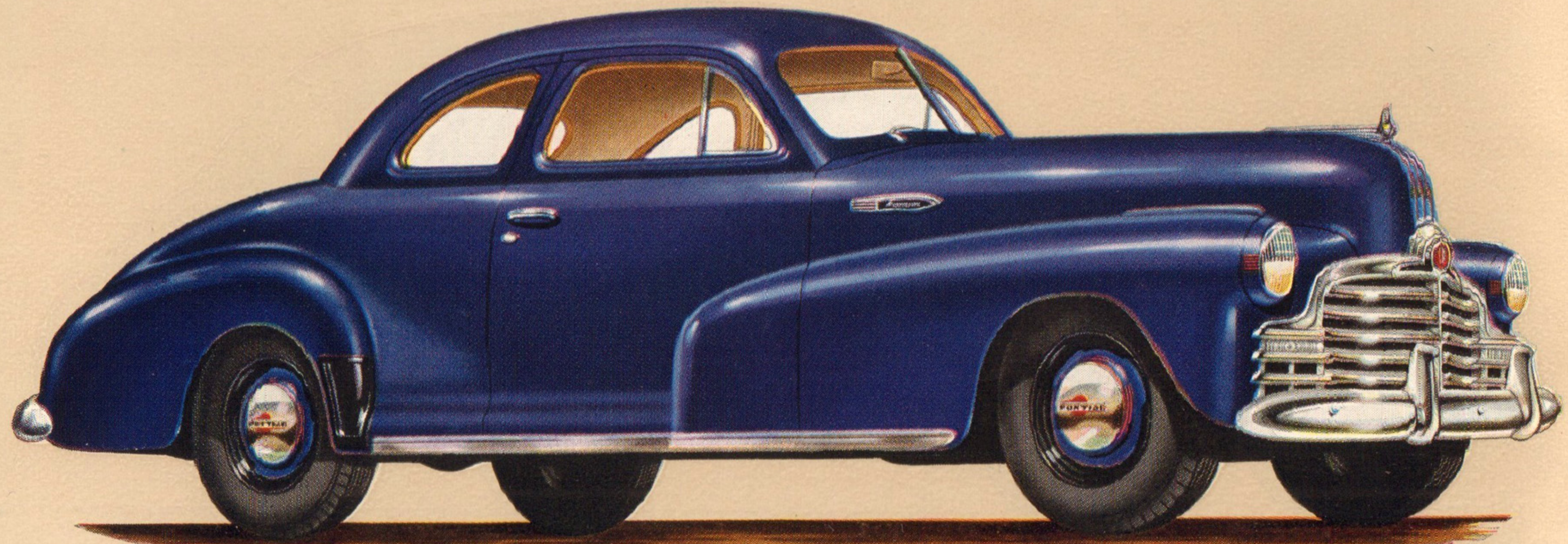
All of these new or improved features add up to making Pontiac for 1946 better than its famous predecessors — truly the finest of the famous "Silver Streaks".

The following pages define and describe each of the four new Pontiac series — Fleetleader, Fleetleader Special, Torpedo and Streamliner. They differ, of course, but only in detail. In all the basically important things, they are alike — all are comfortable, easy to handle . . . all are wonderfully long-lived and economical . . . all are thrilling performers.



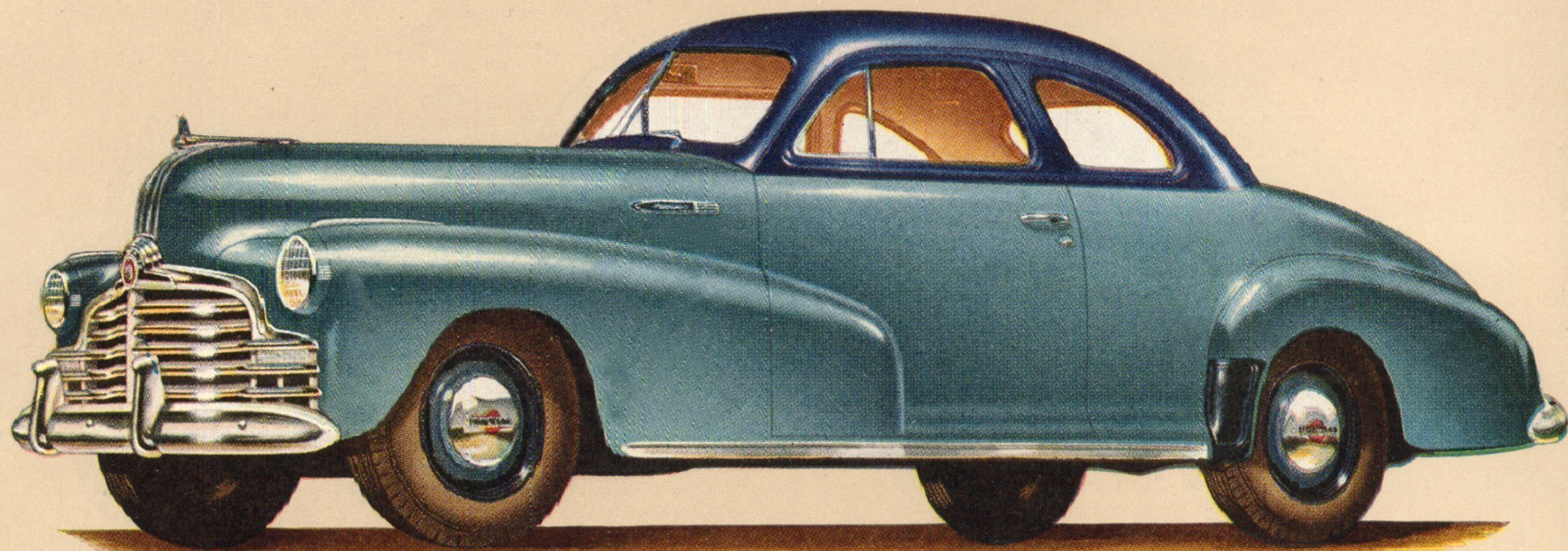
SHOCKPROOF STEERING

Pontiac's shock-proof steering is made possible by knee-action coil springs which absorb the road shock independently, leaving the steering mechanism free to guide the car. This type of steering eliminates sharp knocks and jolts on the roughest roads — makes driving effortless, more relaxing.



Fleetleader BUSINESS COUPE

The Fleetleader Business Coupe offers real economy to the small family or the travelling business man. The larger trunk allows generous space for luggage and sample kits.



Fleetleader

SPORT COUPE

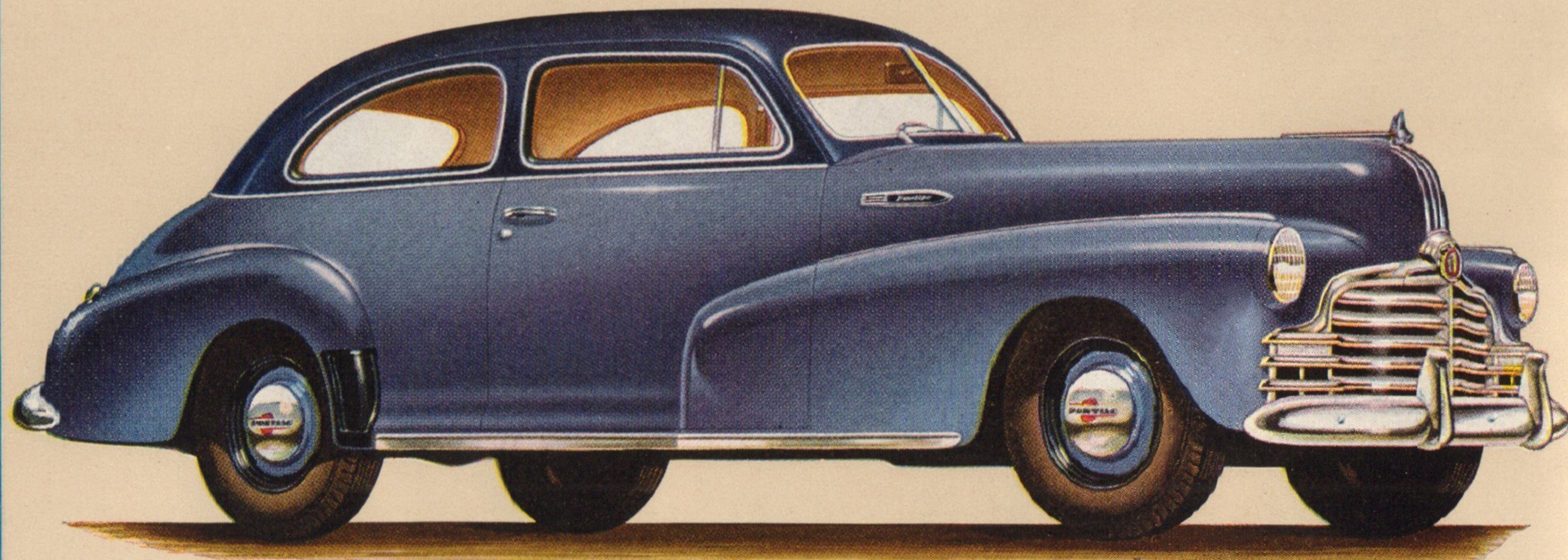
Rangy, distinctive, the Fleetleader Sport Coupe has a long, lithe appearance. There is extra strength and safety in the Unisteel Body by Fisher, common to all Pontiac models.



FISHER NO-DRAFT

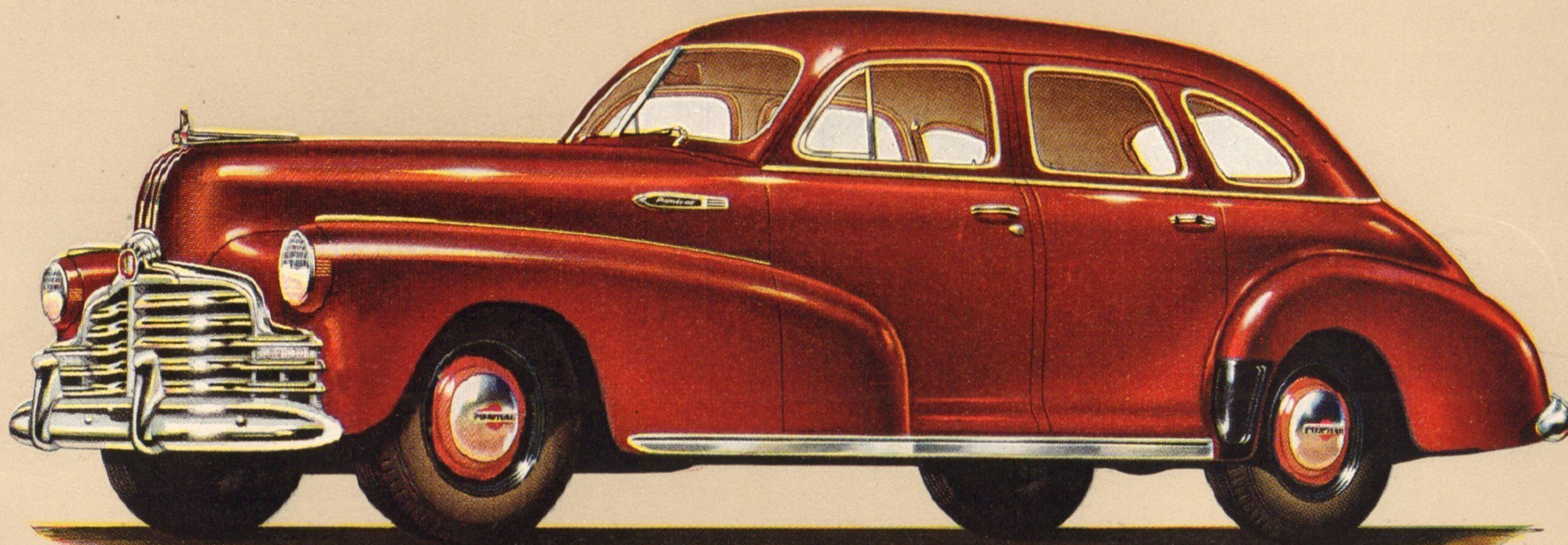
Pontiac's Genuine Fisher No-Draft Ventilation enables each passenger to enjoy just the amount of fresh air he wants, without drafts or discomfort to himself or others. Front ventipanes may even be left partly open during stormy weather, as special drip shield deflects rain and snow.

Many advanced details add to the luxurious appointments of the Fleetleader Special. Instrument panel clock, cigar lighter, ash trays, arm rests front and back are standard equipment. An added feature is the automatic lighting of the interior whenever right front door is opened.



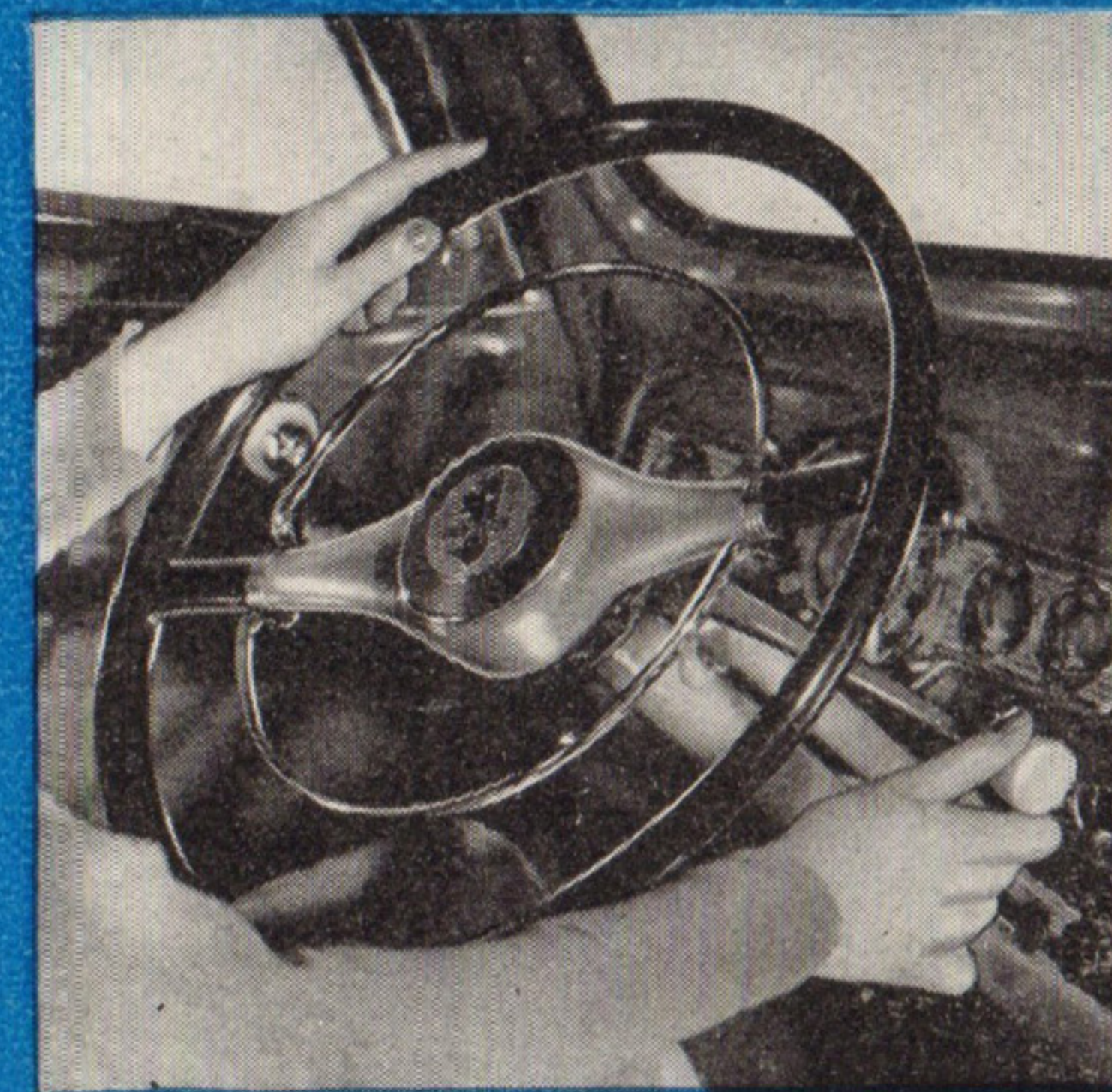
Fleetleader Special TWO DOOR SEDAN

As with all 1946 models, Pontiac provides bumper jack, combination wheel wrench and jack handle, screw driver and pliers at no extra cost, with this Fleetleader Special Two Door Sedan.



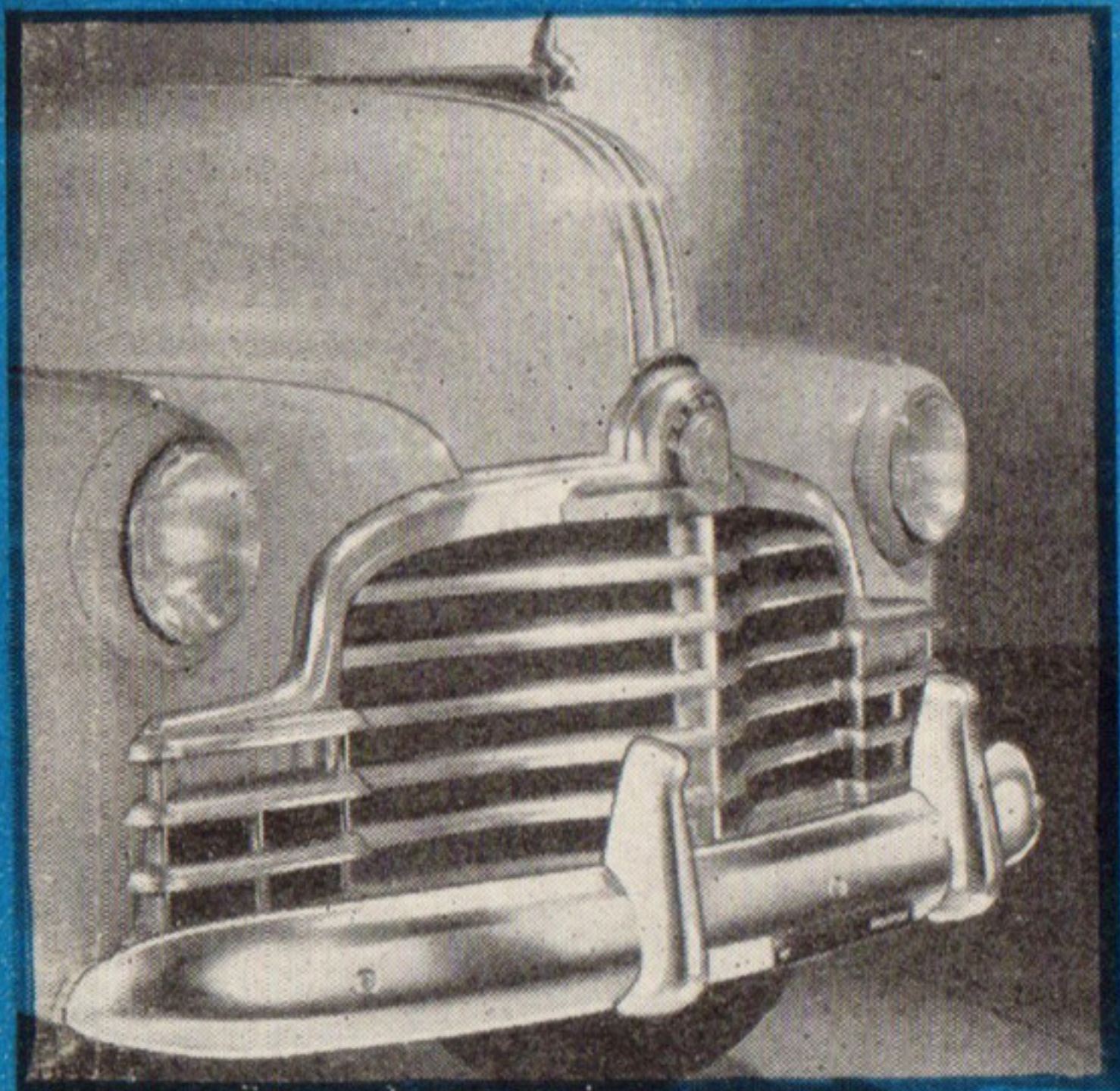
Fleetleader Special FOUR DOOR SEDAN

The Fleetleader Special Four Door Sedan is outstanding among new car models for 1946. Both two and four-door Sedans seat six people comfortably.



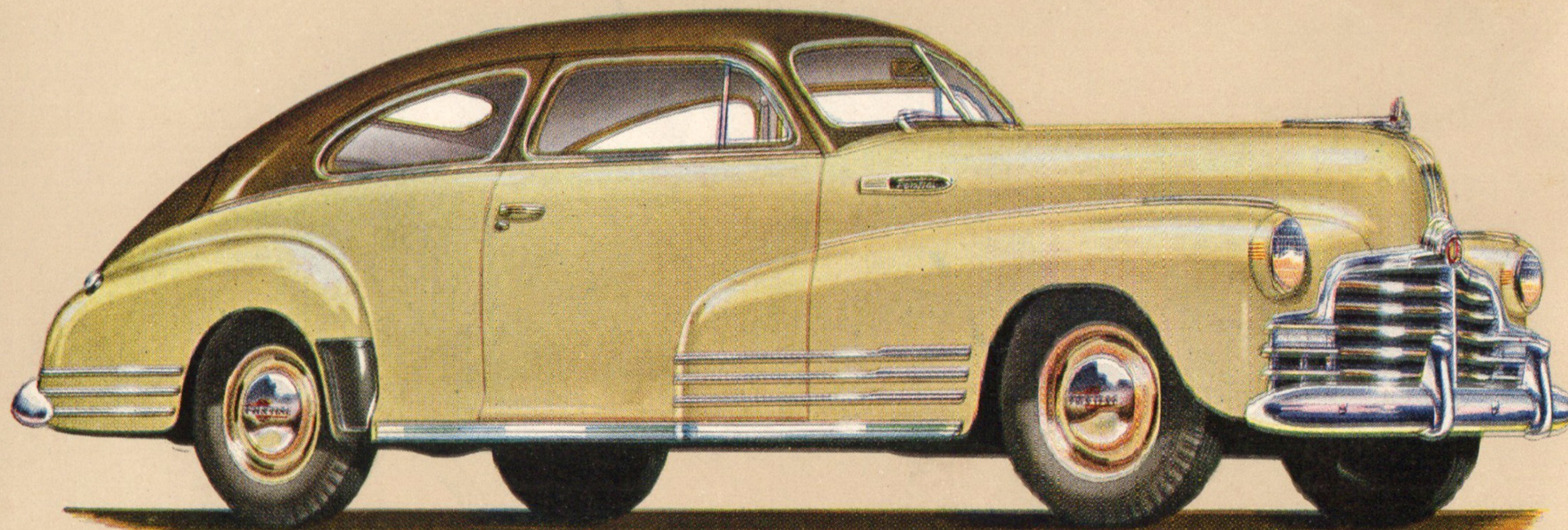
FINGER-TIP SHIFTING

Safety-Shift Gear Control, pioneered by Pontiac, makes gear shifting a simple, finger-touch operation. The gear-shift lever is on the steering column within easy reach, and the handle may be easily adjusted to suit the driver.



MASSIVE BUMPERS

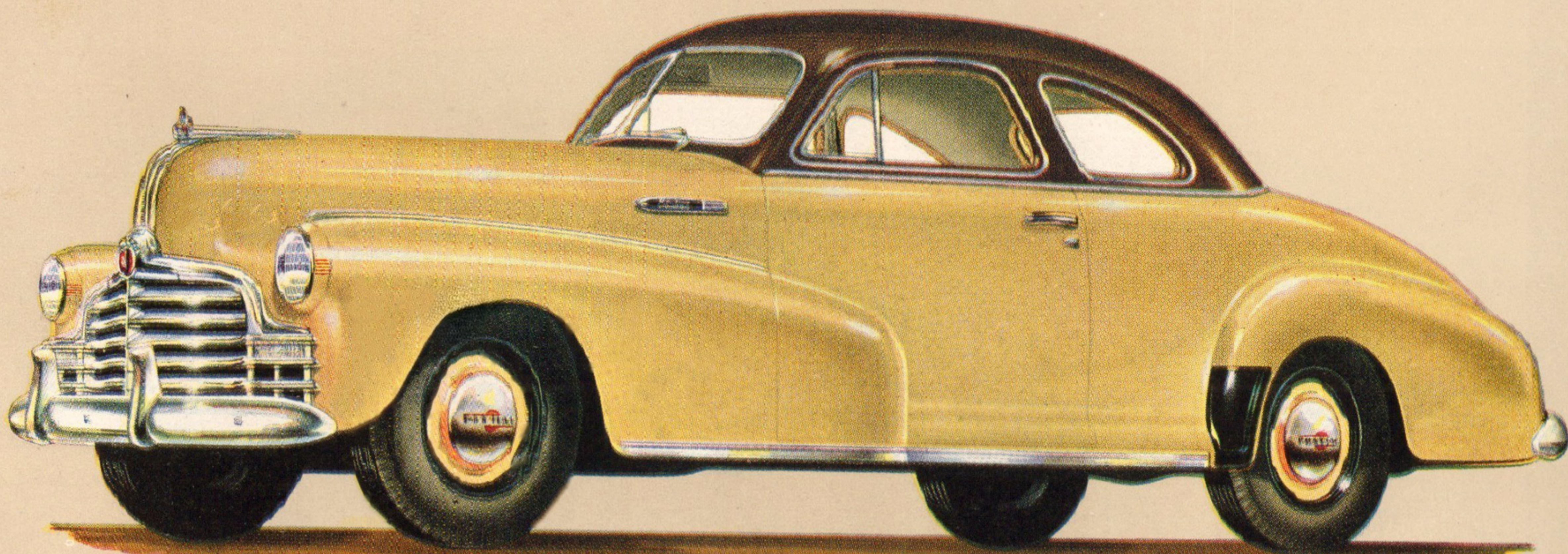
New, larger, deeper, more massive bow-shaped bumpers, together with the new, larger and stronger bumper guards, more widely spaced, give greater protection to grille, fenders and headlamps. The bumpers are of carbon steel construction, plated with heavy chrome.



Fleetleader Special

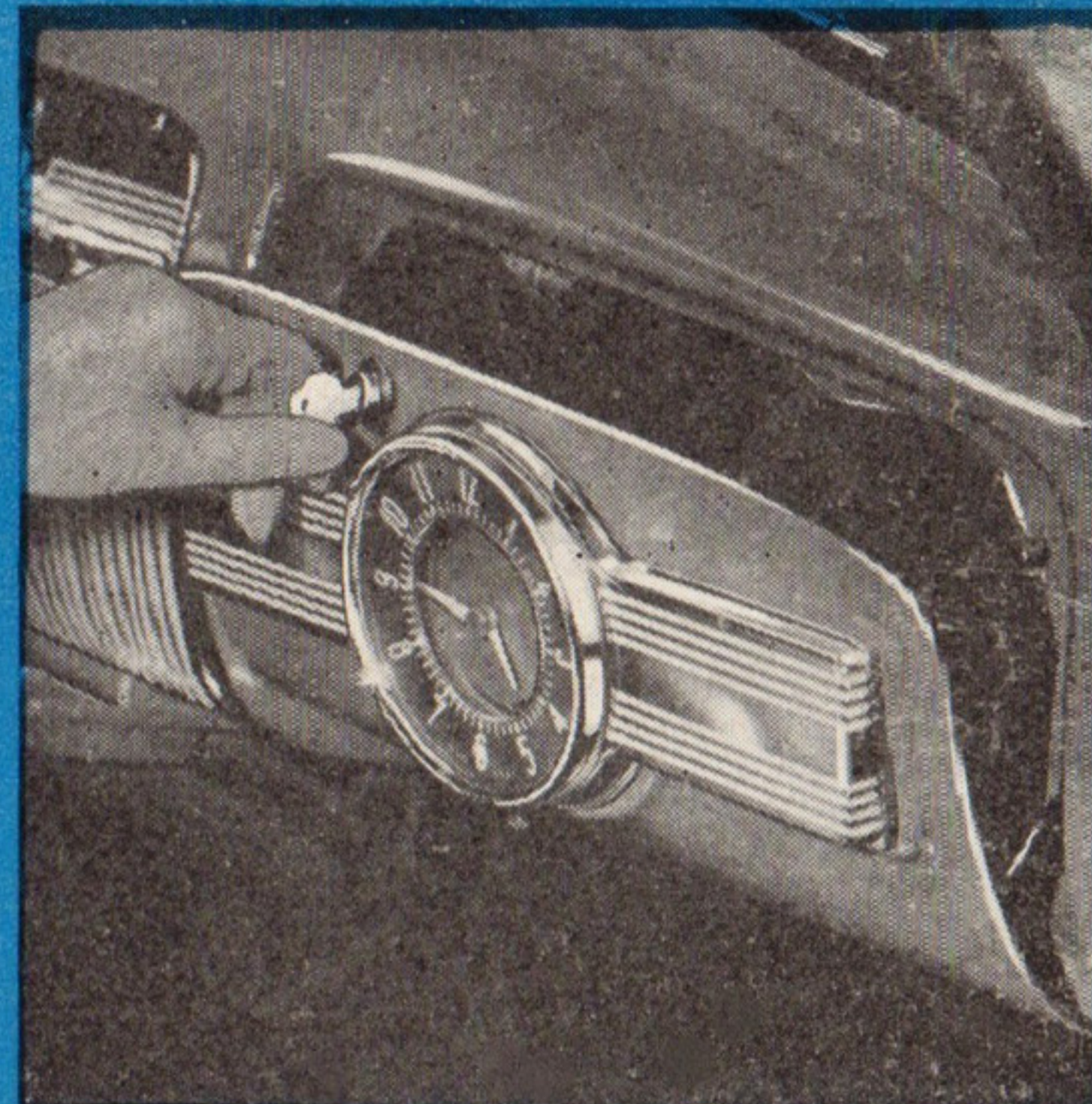
SEDAN COUPE

The lower roof gives the Fleetleader Special Sedan Coupe a racy, streamlined appearance. Doors on all Pontiac models are effectively double-sealed to keep out drafts and road dust.



Fleetleader Special SPORT COUPE

This Fleetleader Special Sport Coupe is a jaunty stand-out wherever it travels. On the Fleetleader Special Series, the two-spoke steering wheel is equipped with a full circle horn-blowing ring.



GLOVE COMPARTMENT

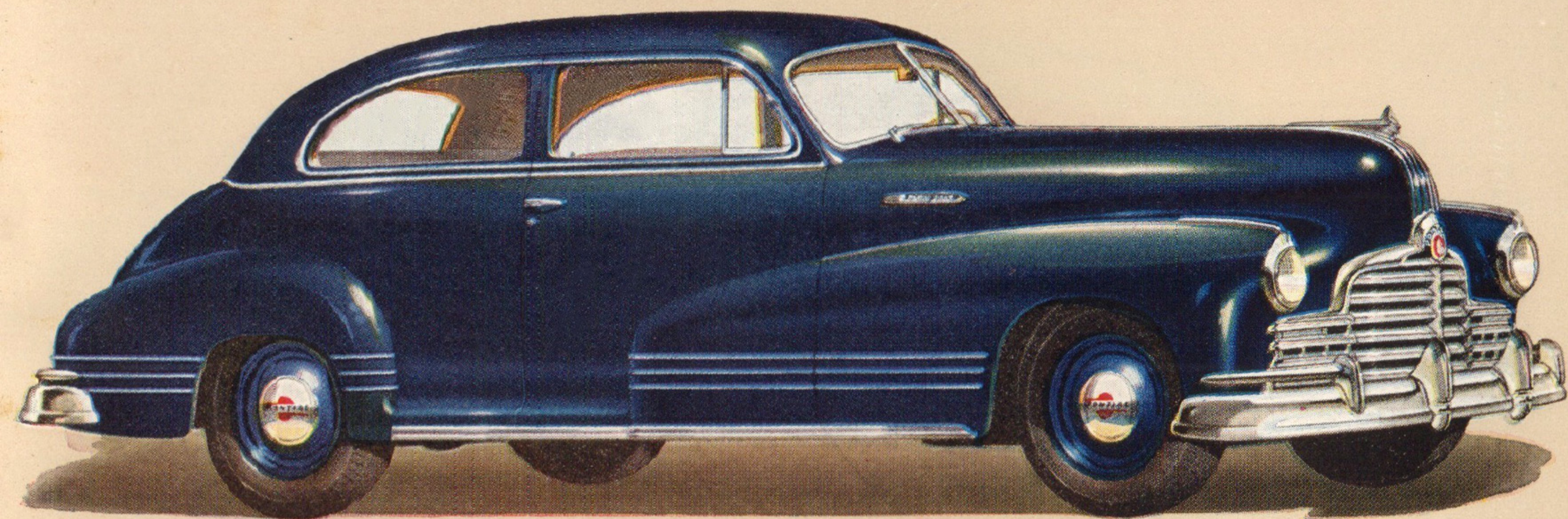
All Pontiacs feature a spacious glove compartment on the right side of the instrument panel. Opens automatically when lock button is pushed, and may be locked with the key to the trunk. Two long clips installed in the compartment's top panel can be used for maps, etc.

When you choose the 1946 Pontiac Torpedo, you can be sure of more quality than Pontiac has ever offered in any previous Torpedo model. The ultra-modern Torpedo styling — so popular in prewar models — has been fully retained, and to it have been added deft touches to improve an already outstanding design.

Torpedo

The 1946 Pontiac Torpedo is available with either a Six-cylinder or Eight-cylinder engine. Both engines are of the quiet, powerful, outstandingly dependable L-Head Design.

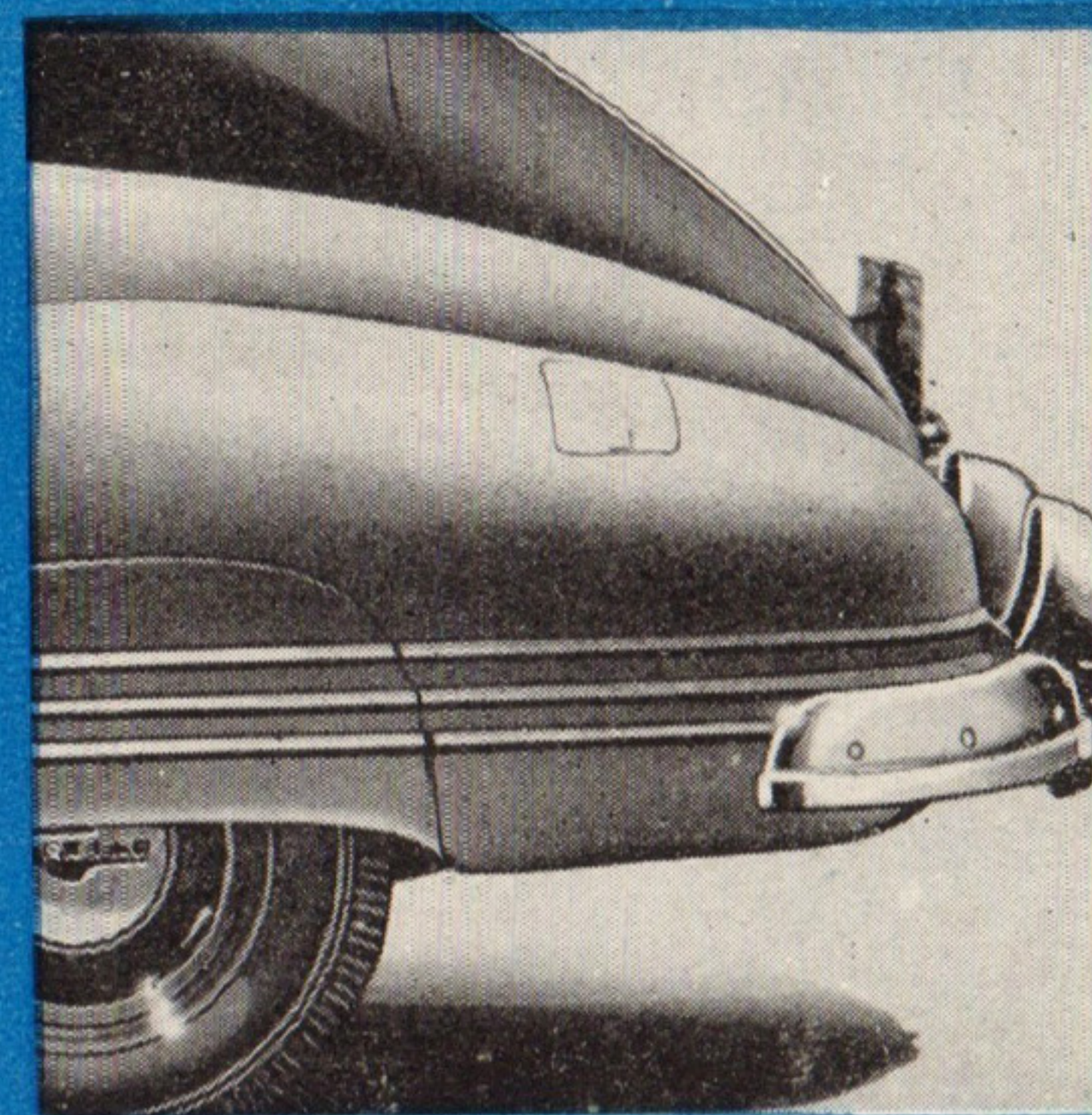




Torpedo

TWO DOOR SEDAN

An up-to-the-minute, beautifully styled car. Like all Pontiac models, it is insulated top, front, back and sides to retain heat in winter and block it out in summer.



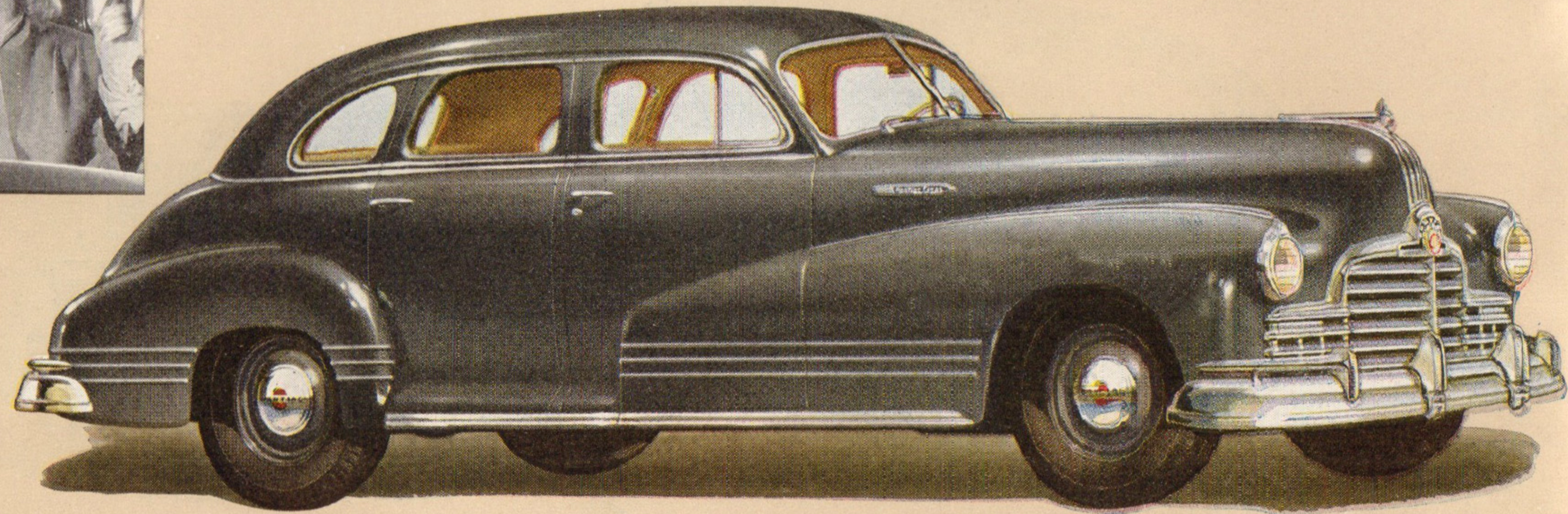
WRAP AROUND BUMPER

On the 1946 Pontiac Torpedo and Streamliner Series, both front and rear bumpers take a definite curve to wrap firmly around the fenders. Additional protection is thus provided for fenders and much of the interlocking hazard is eliminated from parking.



FULL WIDTH SEAT

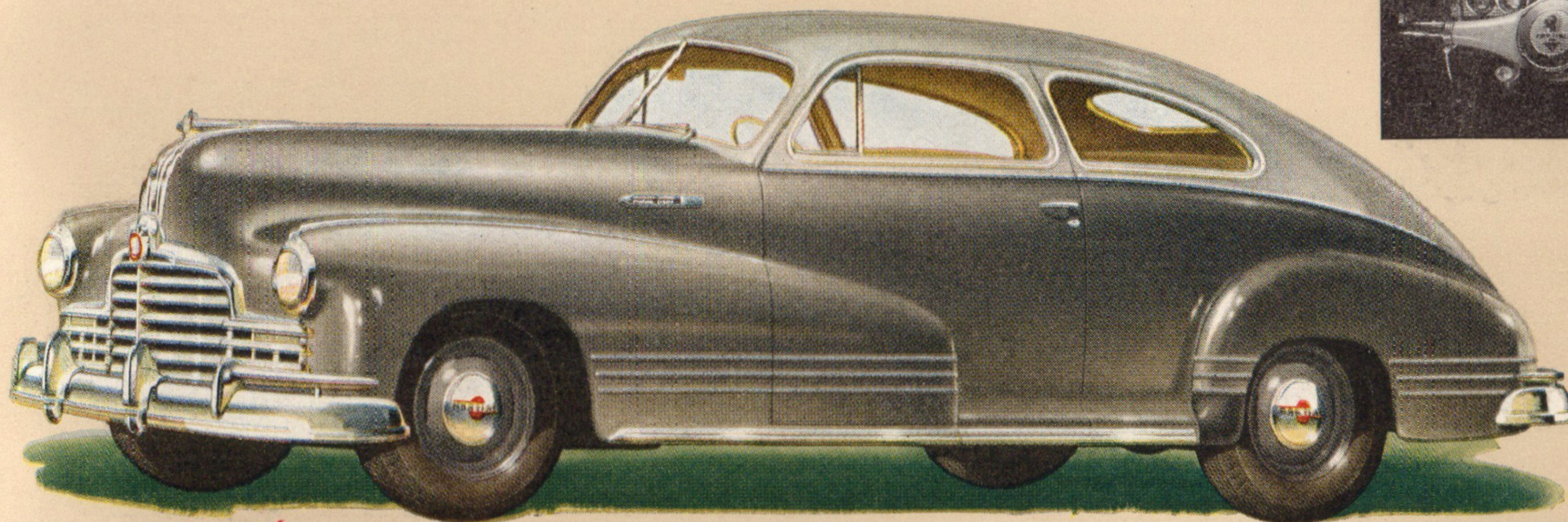
Both front and rear seats of the 1946 Pontiac have ample width for three persons, with additional space in front seat for the driver to manoeuvre arms and legs without inconveniencing himself or others. Rear compartment boasts a wide, restful foot support for all rear seat passengers.



Torpedo

FOUR DOOR SEDAN

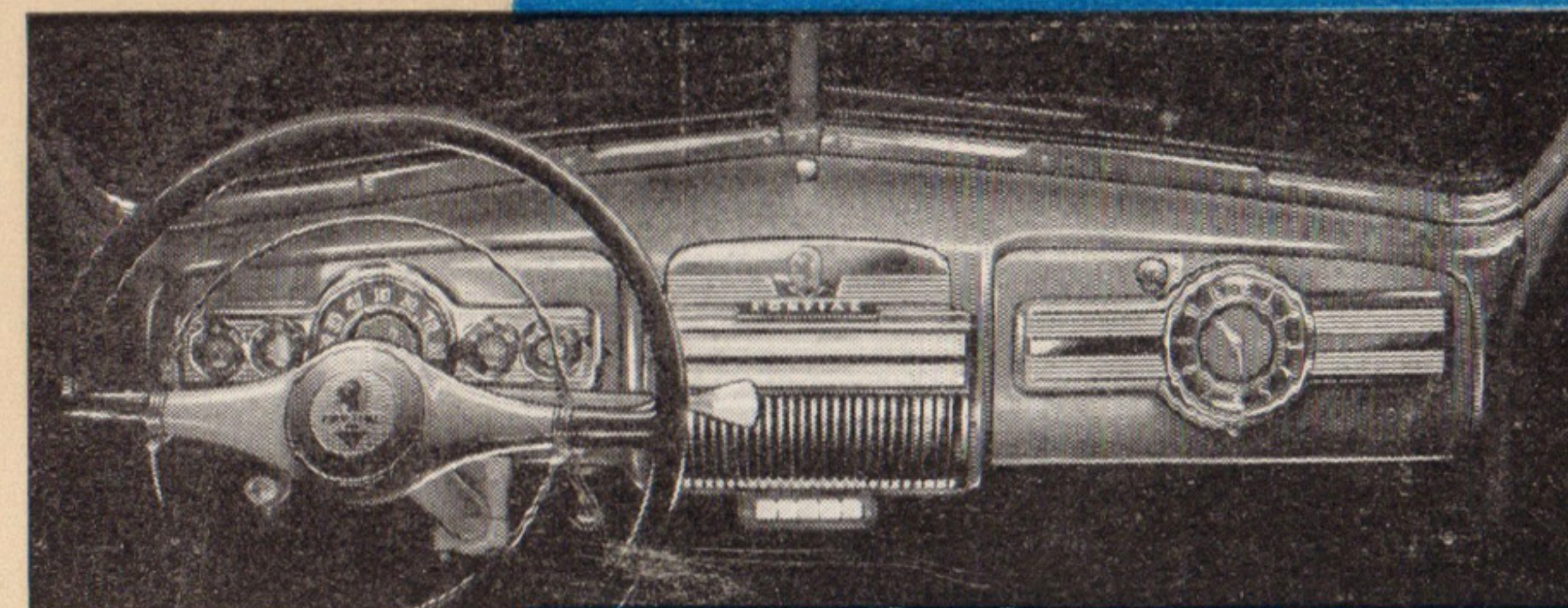
A luxurious car in everything but cost. The Sealed Beam Headlamps, which insure safer night driving, are standard on every 1946 Pontiac.



Torpedo

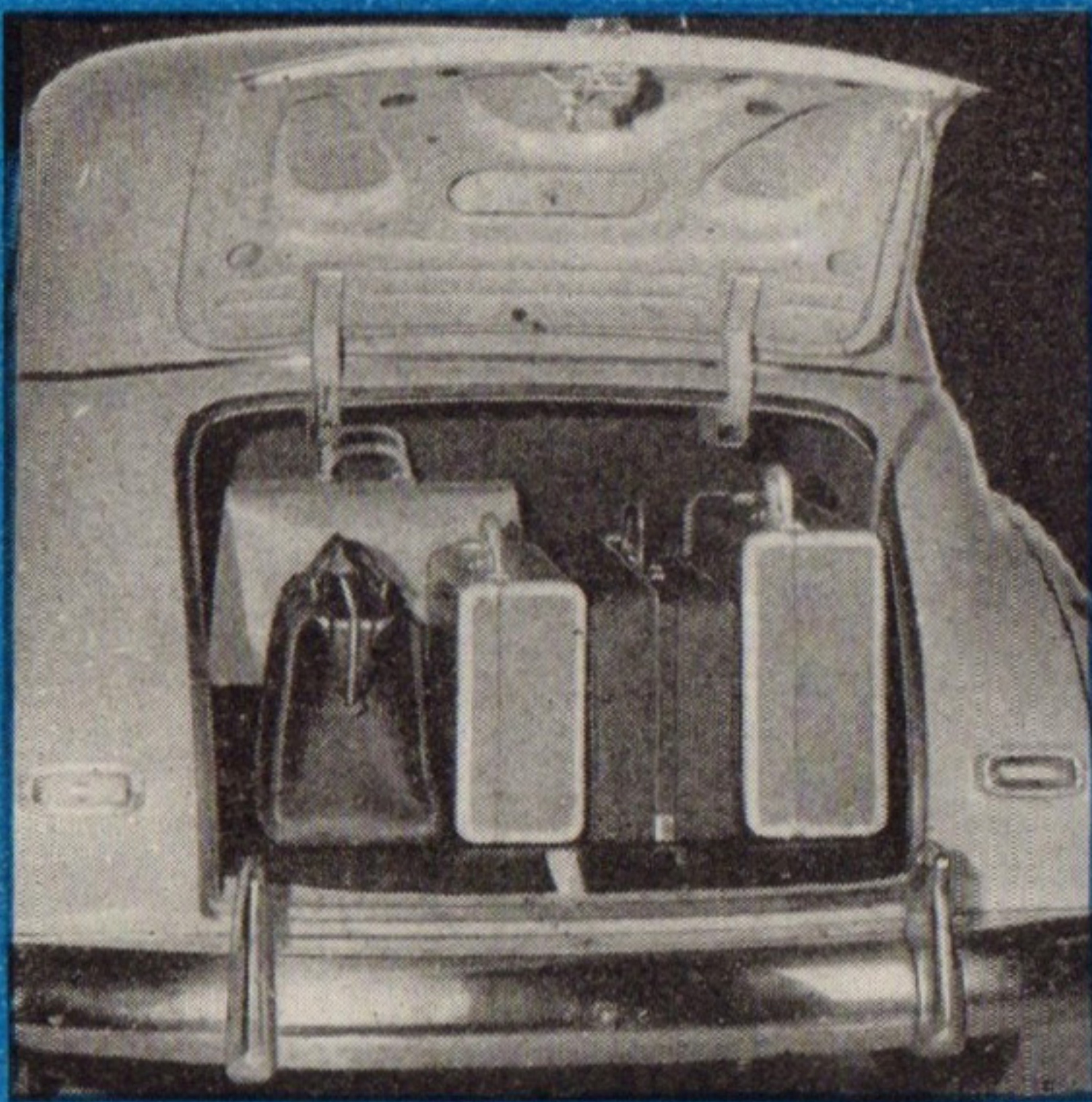
SEDAN COUPE

Combines a compact exterior with exceptional roominess and comfort. All Torpedo models have a 119" wheelbase. Overall length — 204½".



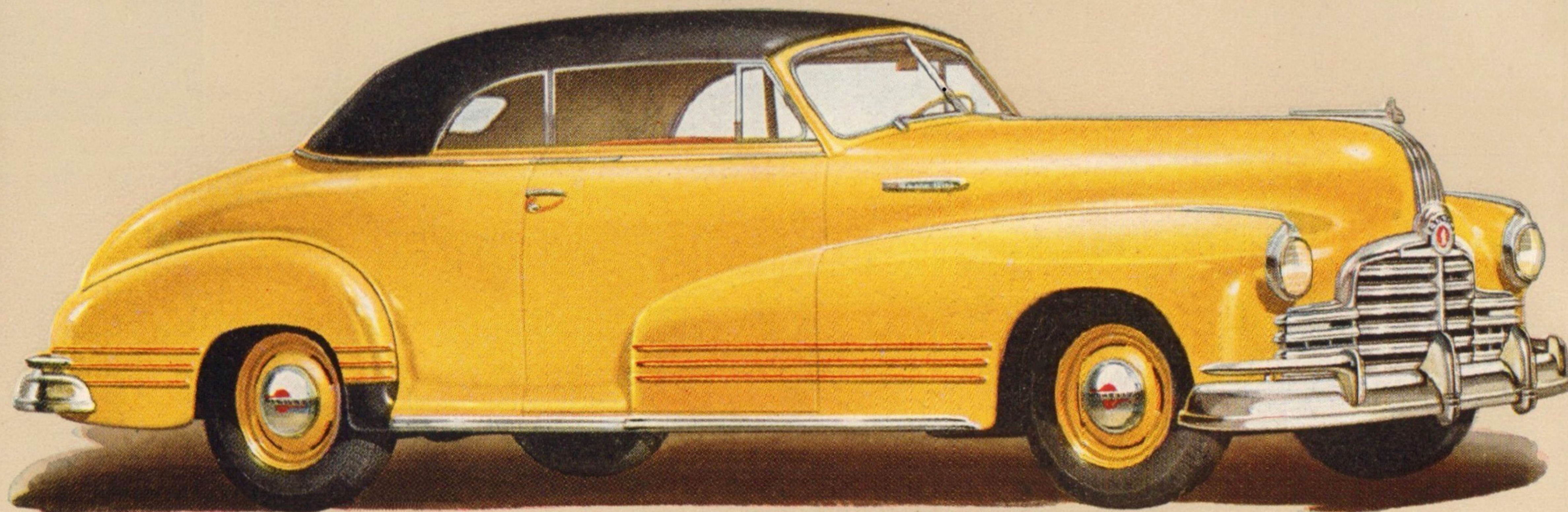
INSTRUMENT PANEL

Pontiac's new instrument panel is a masterpiece of beauty and functional design. All controls are easily accessible to the driver without distracting his attention from the road. Gauges and indicators are directly in front of him and readable at a glance. Instrument panel lighting may be increased or decreased to suit the driver's convenience.



LUGGAGE TRUNK

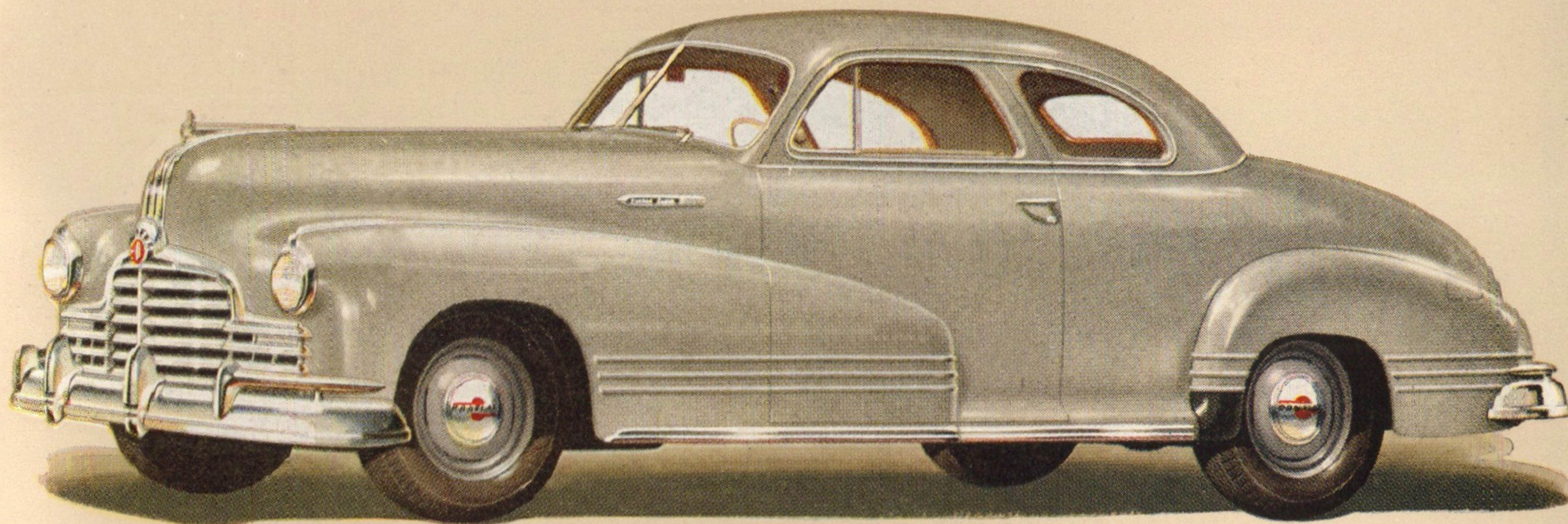
Luggage compartments are especially large and have been designed to provide the greatest possible amount of useful space. The spare tire occupies a special niche on the left side where it can be easily reached without removing luggage.



Torpedo

CONVERTIBLE COUPE

Offers a choice of Genuine Hand-Buffered Colonial Grain Leather in Black, Red, Green, Blue or Tan or combination Leather and Whipcord, with top material in Black or Natural.



Torpedo SPORT COUPE

The Torpedo Sport Coupe is beautifully proportioned to emphasize the impression of size and stability. Dual windshield wipers, adjustable dual sun visors, and adjustable rear vision mirror are standard equipment on all Series.



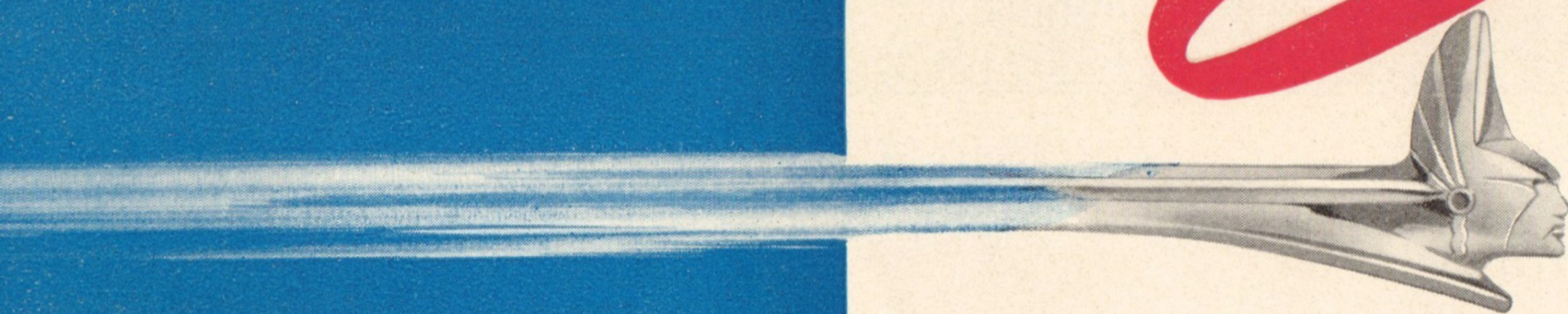
ROOMY INTERIOR

Roominess and comfort are the keynotes of the 1946 Pontiac. Generous interior space provides ample leg room, ample elbow room, ample headroom, ample room to drive or ride in perfect comfort.

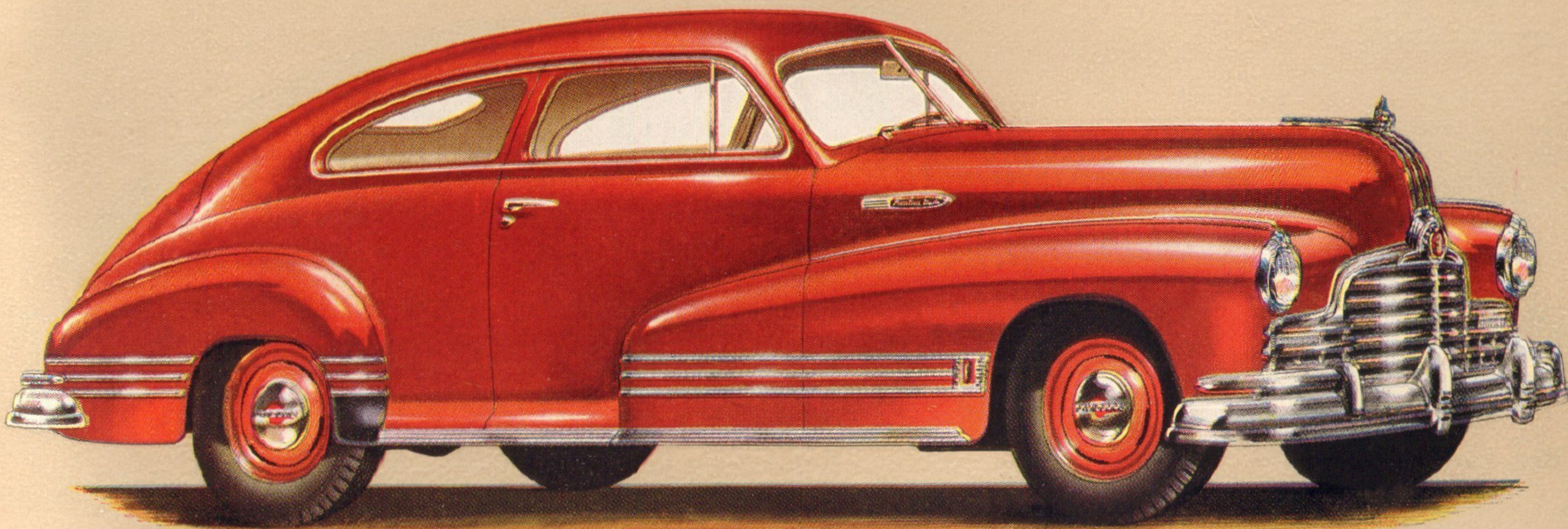
Duflex Rear Springing, the basis of Pontiac's famous, easy ride, is fully retained on the 1946 Torpedo and Streamliner Series. Balanced weight distribution, the heavy Bridge-type Cantilever Frame, Knee Action in its finest form, Stabilizer Bar and Hydraulic Cushion Levelators are other factors which assure Pontiac's taking the roughest roads smoothly and comfortably.

THE

Streamliner



Pontiac's new 1946 colors are smart, smooth, and distinctive. Standard body colors are Silver Wing Gray, Mariner Blue, Smoked Pearl, Parma Wine Black, and Catalina Cream. Two-tone color combinations, available at slight extra cost, include Light Gray and Blue and Light and Dark Gray.



Streamliner

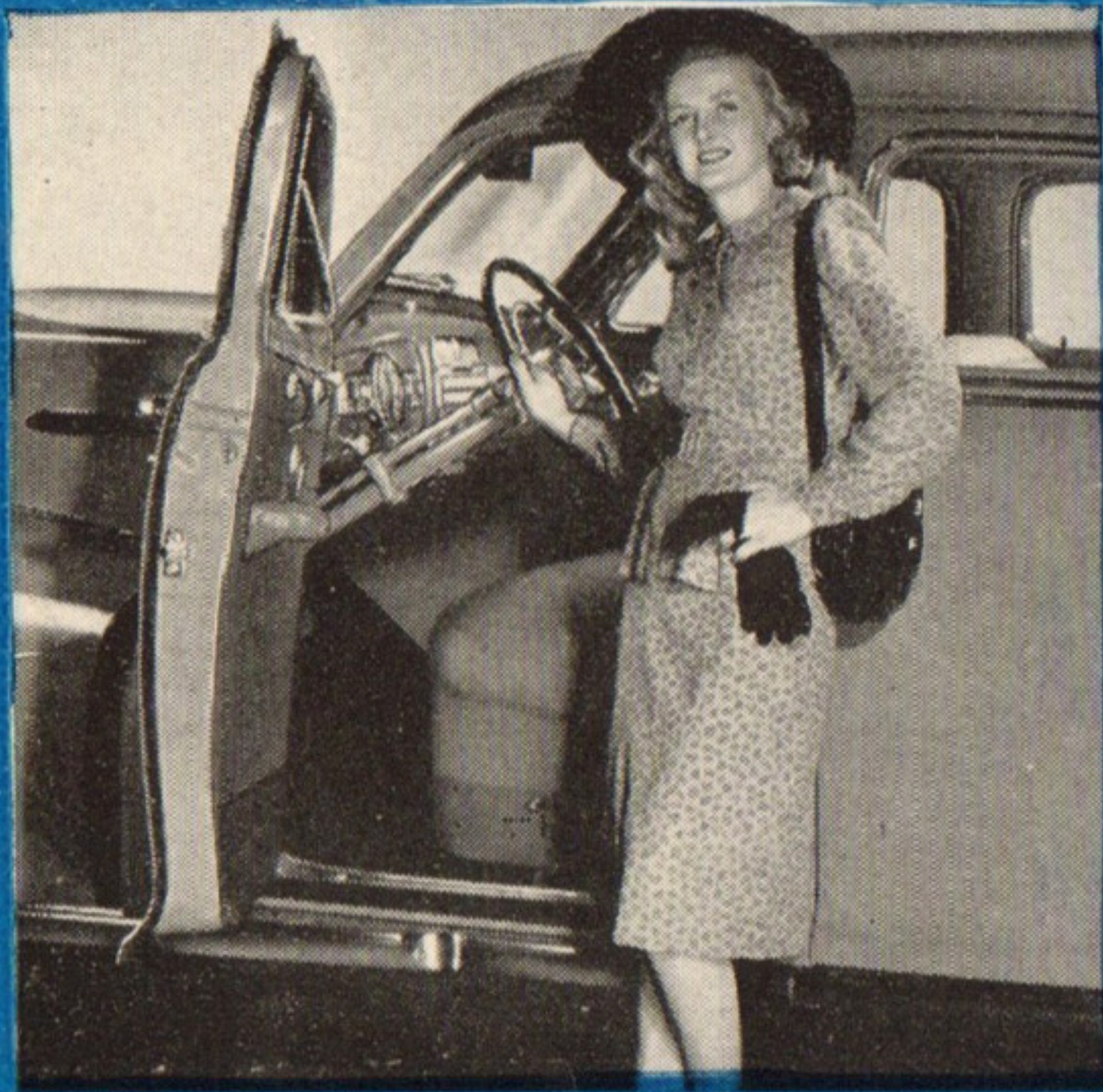
TWO DOOR SEDAN

Bumper Guards and Rear Fender Panels shown are optional equipment available at extra cost. All Streamliner models have a 122" wheelbase.



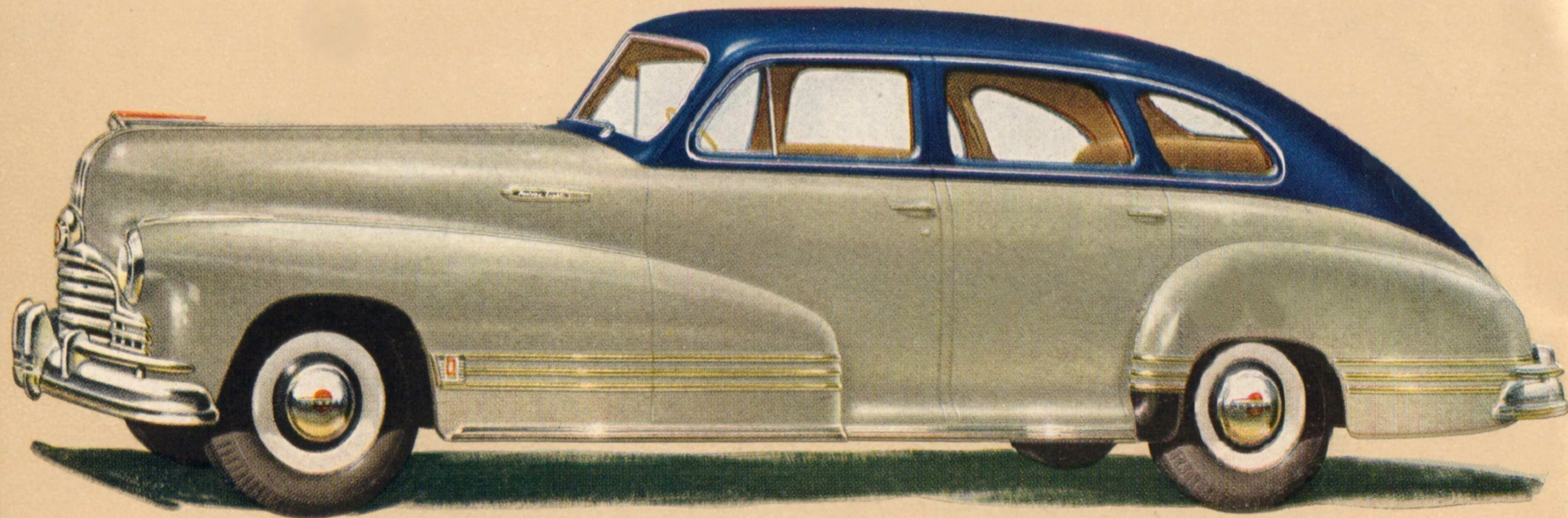
LUXURIOUS INTERIOR

Pontiac interiors are an impressive blend of harmonizing beauty, completeness, and luxury. Seat backs are upholstered in smart, long-wearing fabrics in a three-panel style. Seat cushions are covered with identical material. The beautifully grained walnut selected for the metal panels, the polished chrome and colorful plastic fittings, are all evidence of the most advanced thinking in automobile interior design.



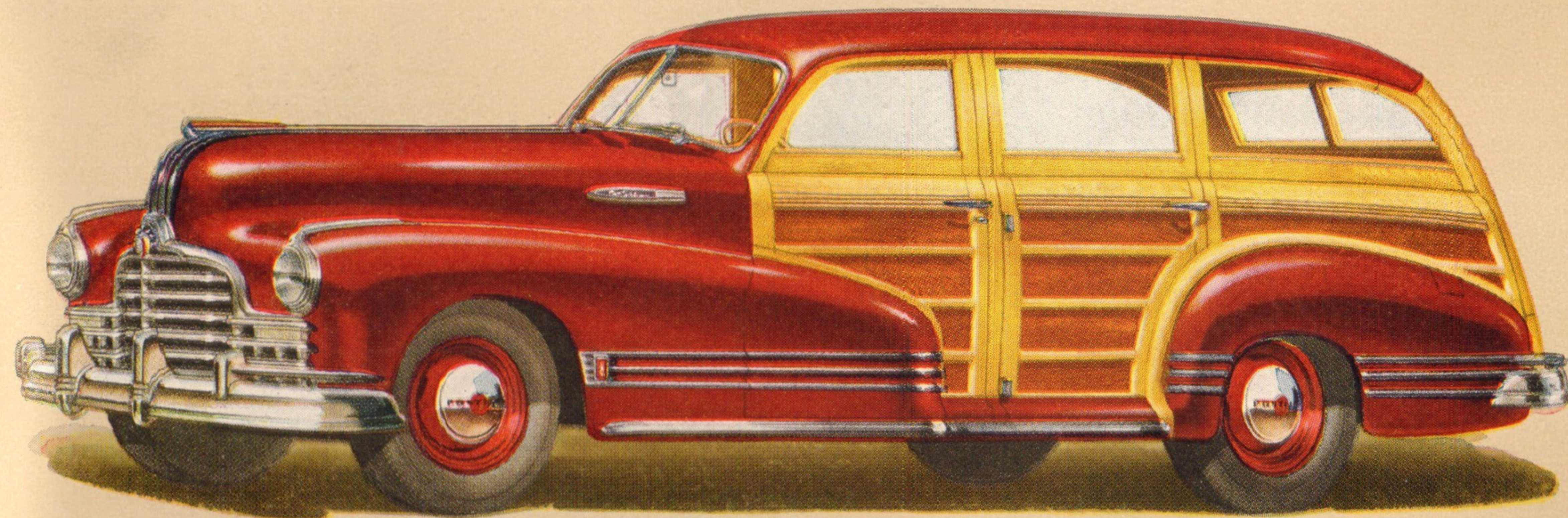
WIDE DOORS

Pontiac's wide doors are hinged at the front — providing an important safety feature as doors cannot fly open in the wind if they are accidentally left ajar. Door holders hold doors firmly in position when they are fully open. All door hinges are concealed for a completely streamlined appearance.



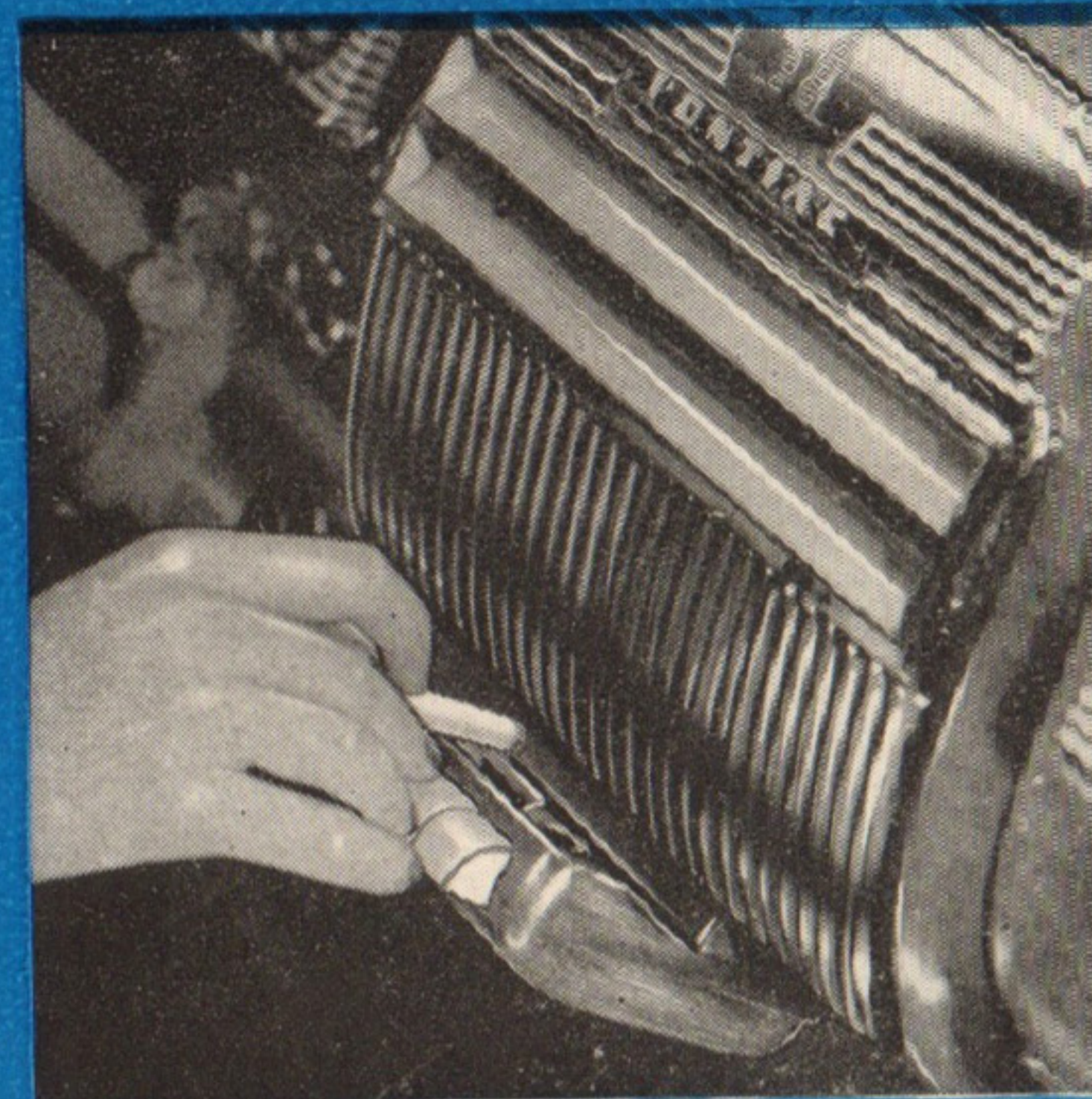
Streamliner FOUR DOOR SEDAN

Bumper Guards, White Side Wall Discs and Two-Tone Color Combination are optional at extra cost. On all Streamliner models, overall length is 210 $\frac{1}{4}$ ".



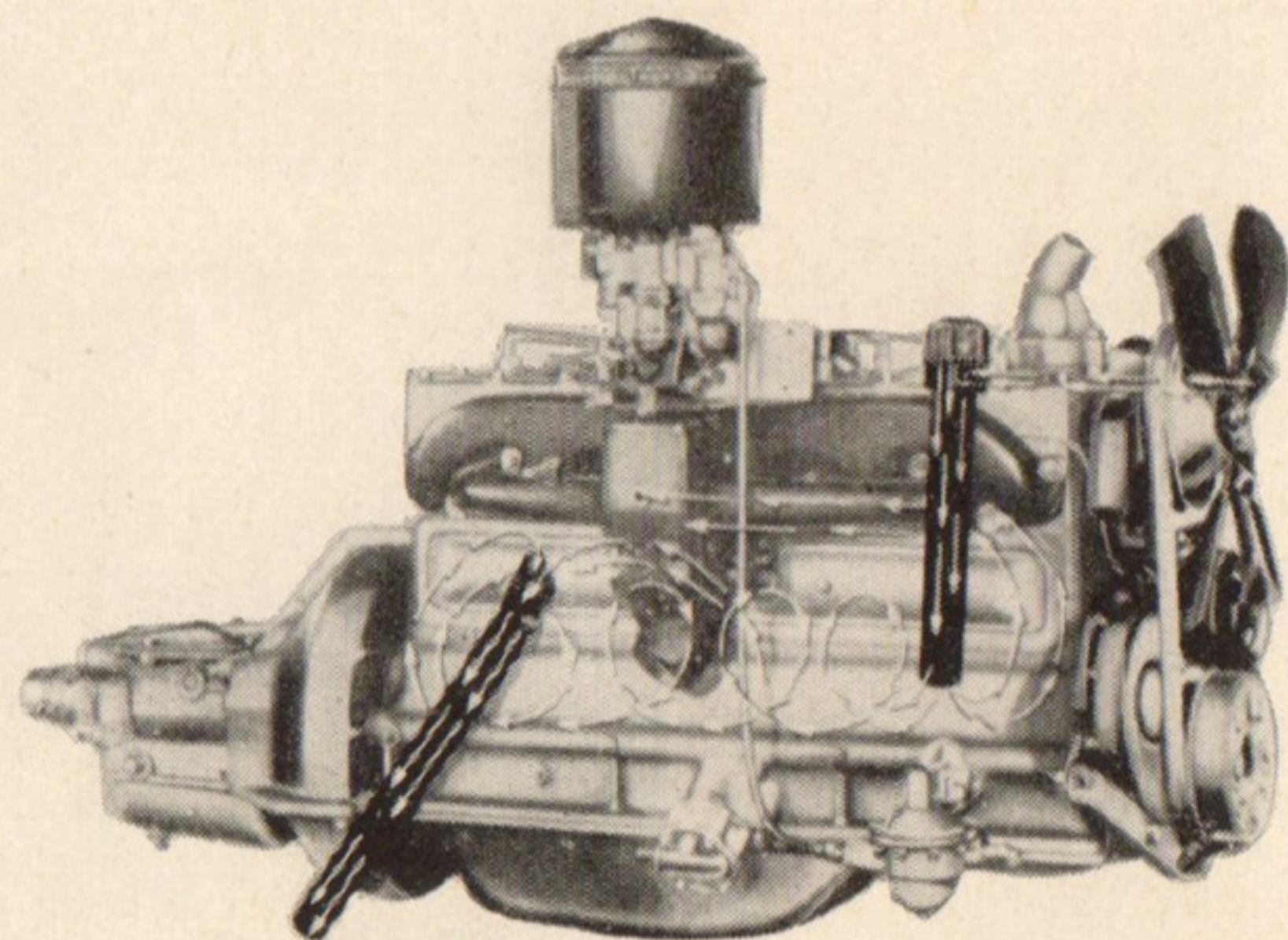
Streamliner STATION WAGON

The Standard Station Wagon is upholstered in Rich Tan Imitation Leather and the DeLuxe in Genuine Red Leather and Wool Cloth. Both rear seats are removable to accommodate extra luggage.



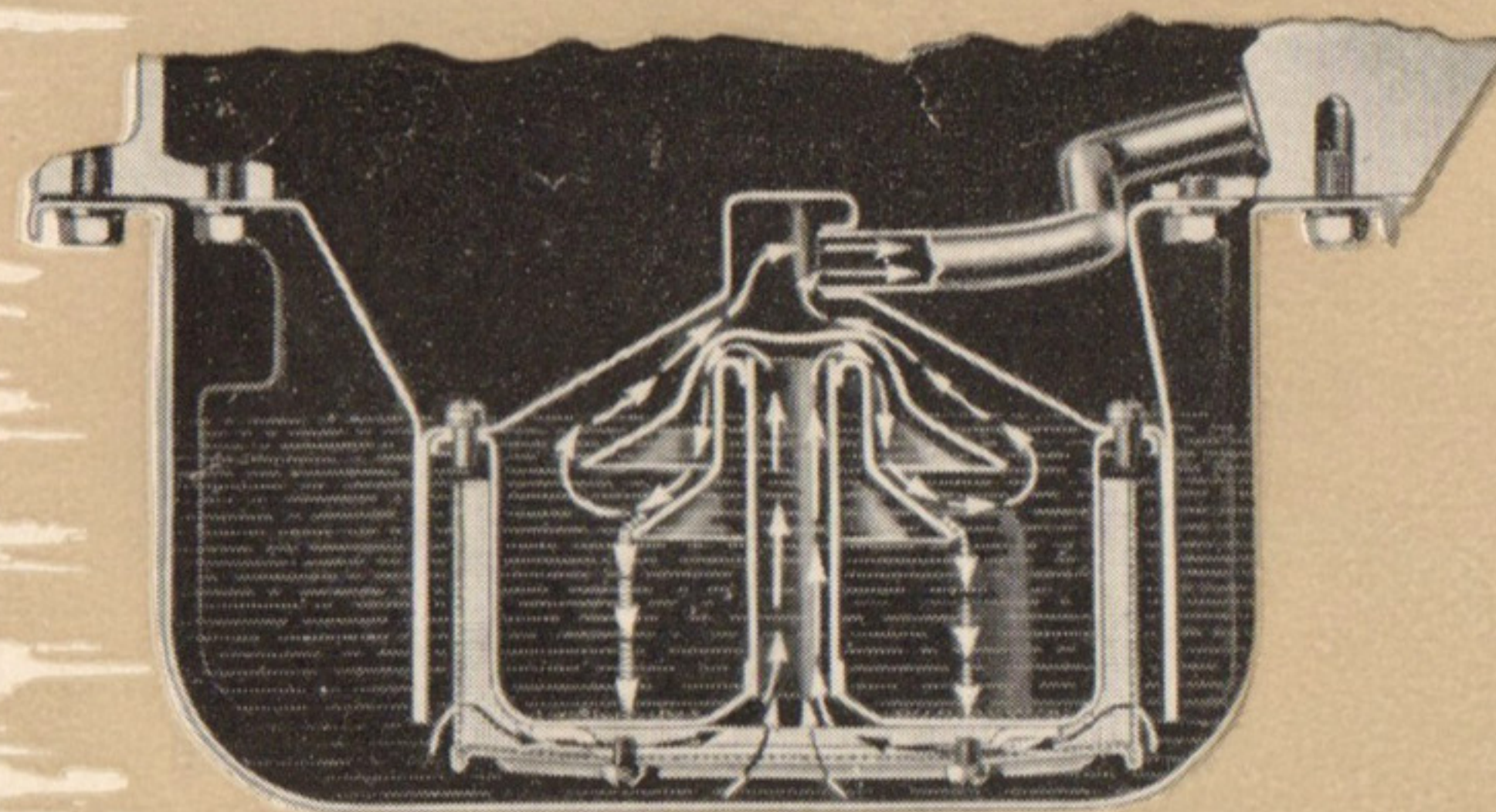
ASH TRAYS

Cigar lighter and ash trays both front and rear are standard equipment on the Fleetleader Special, Torpedo and Streamliner Series. Individual ash trays for rear seat passengers are built into the side arm rests of two door sedans and into the back of the front seats of four door sedans.



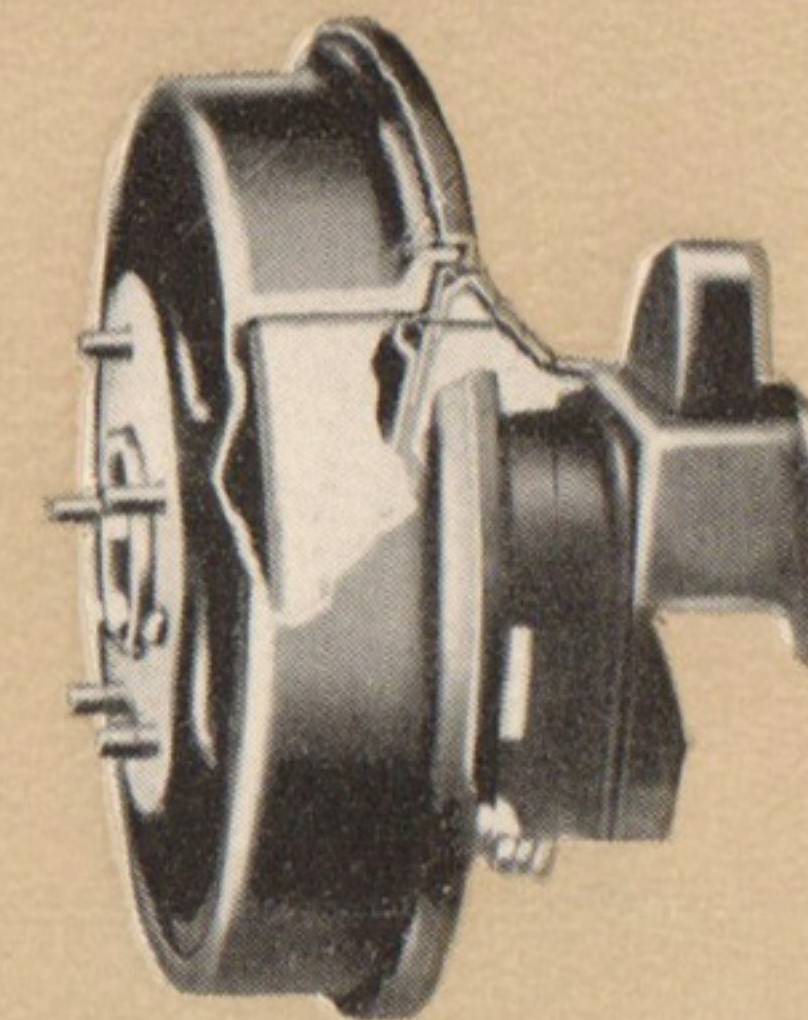
Pontiac's Famous L-Head Engine Gives Longer Trouble-Free Operation

In Pontiac's quiet, powerful L-Head Engine, the buyer gets a power-plant of proved efficiency, stamina, and dependability, with a reputation for fuel economy which is a matter of national record. Long recognized as the most efficient in the industry, this superb engine has been further improved for 1946 to make it even smoother and easier to drive.

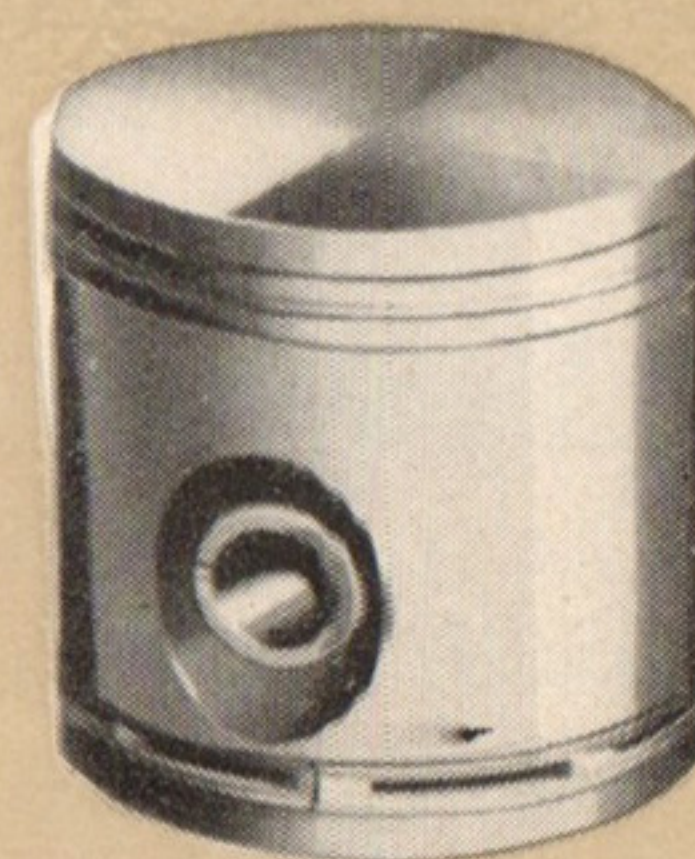


Pontiac's Full Flow Built-in Permanent Oil Cleaner

Good for the lifetime of the car — provides positive protection from damaging grit or dirt in the oil, down to the most minute foreign particle. Located at the inlet to the oil line, every drop of oil used must pass through it.

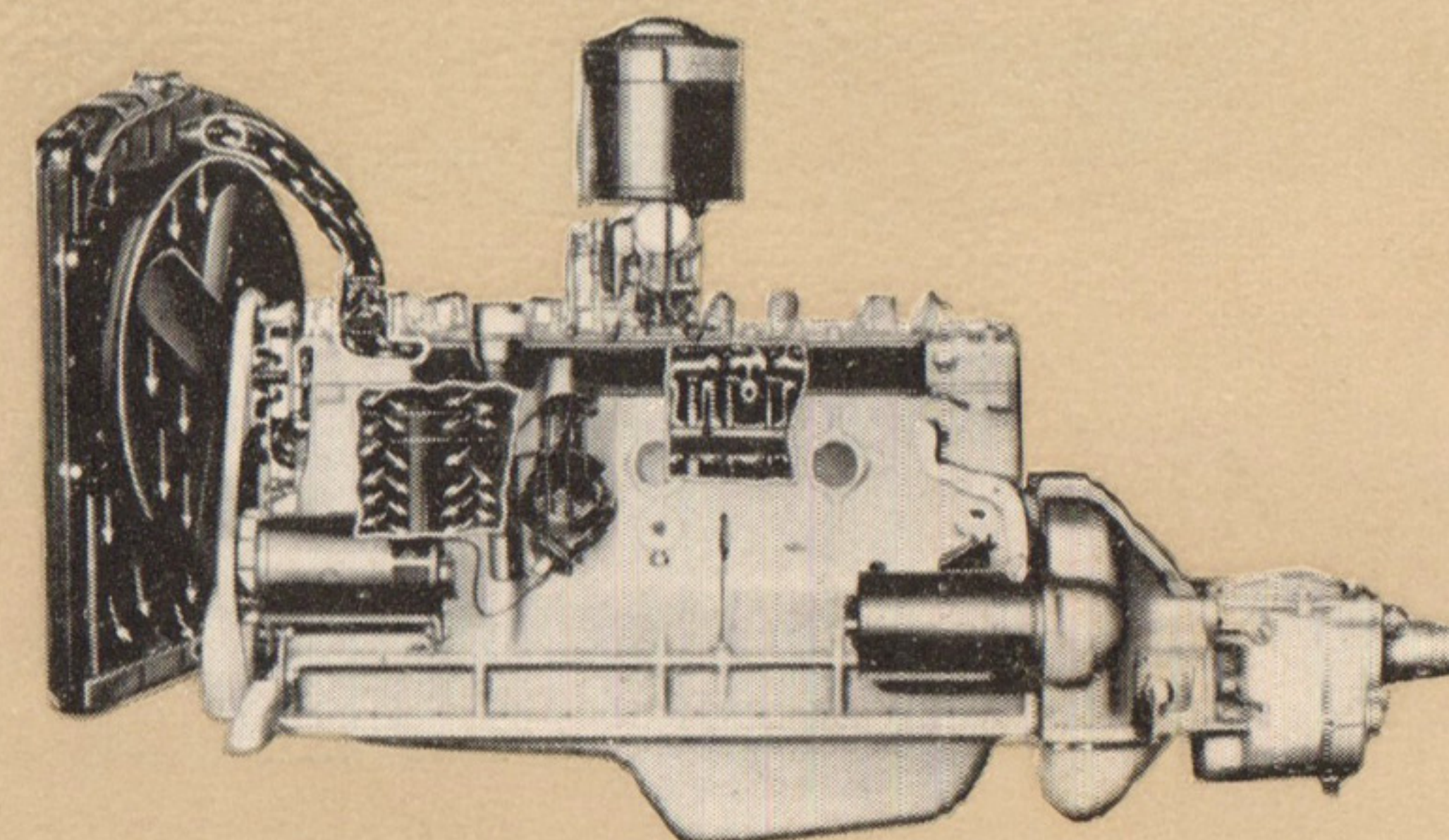


THE CONTROLLING "Self-energizing" principle used in Pontiac's Hydraulic Brakes transforms a light pressure on the brake pedals into a smooth, powerful stopping force. The emergency brake is mechanical and separate from the service brakes.



Pistons

Pontiac's electroplated alloy iron pistons are made of the same material as the engine block to provide equal expansion. Their close fit results in longer piston life and increases gas-line and oil efficiency.



ALL-WEATHER TEMPERATURE CONTROL Assures efficient operation by means of pressure cooling, full-length water jackets, gusher valve cooling, water recirculation and automatic thermostatic temperature control.

Specifications

ENGINE, General—L-head. high compression cylinder head. Projected crankshaft bearing area, six cylinder 13.1 sq. in., eight cylinder 16.7 sq. in. Main and connecting rod bearings have steel-backed removable inserts. Alloy pistons with 2 compression rings, and 1 oil control ring located below the piston pin. Harmonic balancer. Six cylinder bore $3\frac{9}{16}$ in., stroke 4 in. Eight cylinder bore $3\frac{1}{4}$ in., stroke $3\frac{3}{4}$ in. Brake horse power six cylinder 90 at 3200 r.p.m., eight cylinder 103 at 3200 r.p.m.

LUBRICATION — Full-pressure metered flow lubrication. Positive gear-type oil pump driven from crankshaft.

FUEL SYSTEM — Down-draft carburetor with automatic choke. Thermostatic manifold heat control, quick warm-up steel tube fuel preheater and air-cooled fuel line—all contribute to Pontiac's outstanding economy.

GASOLINE TANK CAPACITY—Fleetleader and Fleetleader Special 13 Imperial gallons. Torpedo and Streamliner 14 Imperial gallons.

COOLING SYSTEM—Copper-core radiator. Automatic all-weather engine temperature control. Prelubricated ball-bearing centrifugal water-pump. Full-length water jackets completely surround each cylinder bore.

ELECTRICAL—Six-volt, 15-plate, 100 ampere hours capacity.

Automatic voltage control. Delco-Remy ignition with automatic and vacuum spark control. Octane selector.

CLUTCH—Single dry-plate type, $9\frac{1}{8}$ inches in diameter. Disengaging pressure only 25 lbs. Permanently lubricated bearings.

TRANSMISSION — All-silent, synchro-mesh. Steering column gearshift control.

FRAME — Fleetleader and Fleetleader Special — box-girder frame. Flanged box-section side rails and cross members. Torpedo and Streamliner U-channel frame with X-member crossbrace.

REAR SPRINGS—Fleetleader and Fleetleader Special—semi-elliptic tapered leaf springs. Double-acting shock absorbers. Torpedo and Streamliner — Duflex rear springs. Metal spring covers.

BRAKES, Service — Hydraulic, internal expanding with moulded linings. Total braking area 158 sq. in. Eleven-inch drums, with alloyed iron brake surface.

BRAKES, Parking—Mechanically connected to both rear brake shoes, and independent of hydraulic system.

BODY—All-steel reinforced Turret Top Body by Fisher. Doors of dual panel construction completely rubber

insulated. Entire body is insulated against heat, cold and noise. Solid, non-glare "V" type windshield. Large one-piece rear window. Safety glass throughout. Fisher No-Draft Ventilation. Adjustable front seat. Rear view mirror.

LIGHTS — Sealed-Beam headlamps. Separate parking lamps in grille. Three rear lights on all models. Dome light.

INSTRUMENT PANEL—Speedometer, gasoline, battery, oil pressure and engine temperature indicators. Instruments indirectly lighted. Variable light control. Headlamp beam indicator. Large illuminated glove compartment with lock. Two windshield defroster openings.

TIRES — Fleetleader, Fleetleader Special and Torpedo 6.00 x 16, 4-ply. Streamliner 6.50 x 16, 4-ply.

WHEELBASE—Fleetleader and Fleetleader Special 116 inches. Torpedo 119 inches. Streamliner 122 inches.

FRONT SUSPENSION — Shock-proof action with coil springs. Double-acting, hydraulic shock absorbers. Ride Stabilizer mounted in rubber.

STEERING GEAR—Worm and Roller type. Fleetleader and Fleetleader Special ratio 17.5 to 1. Torpedo and Streamliner ratio 19 to 1.

We reserve the right to make changes in details and specifications from time to time, without obligation to install them on cars previously sold.

GENERAL MOTORS PRODUCTS OF CANADA, LIMITED . . . OSHAWA, ONTARIO



the SYMBOL *of* *Distinction*