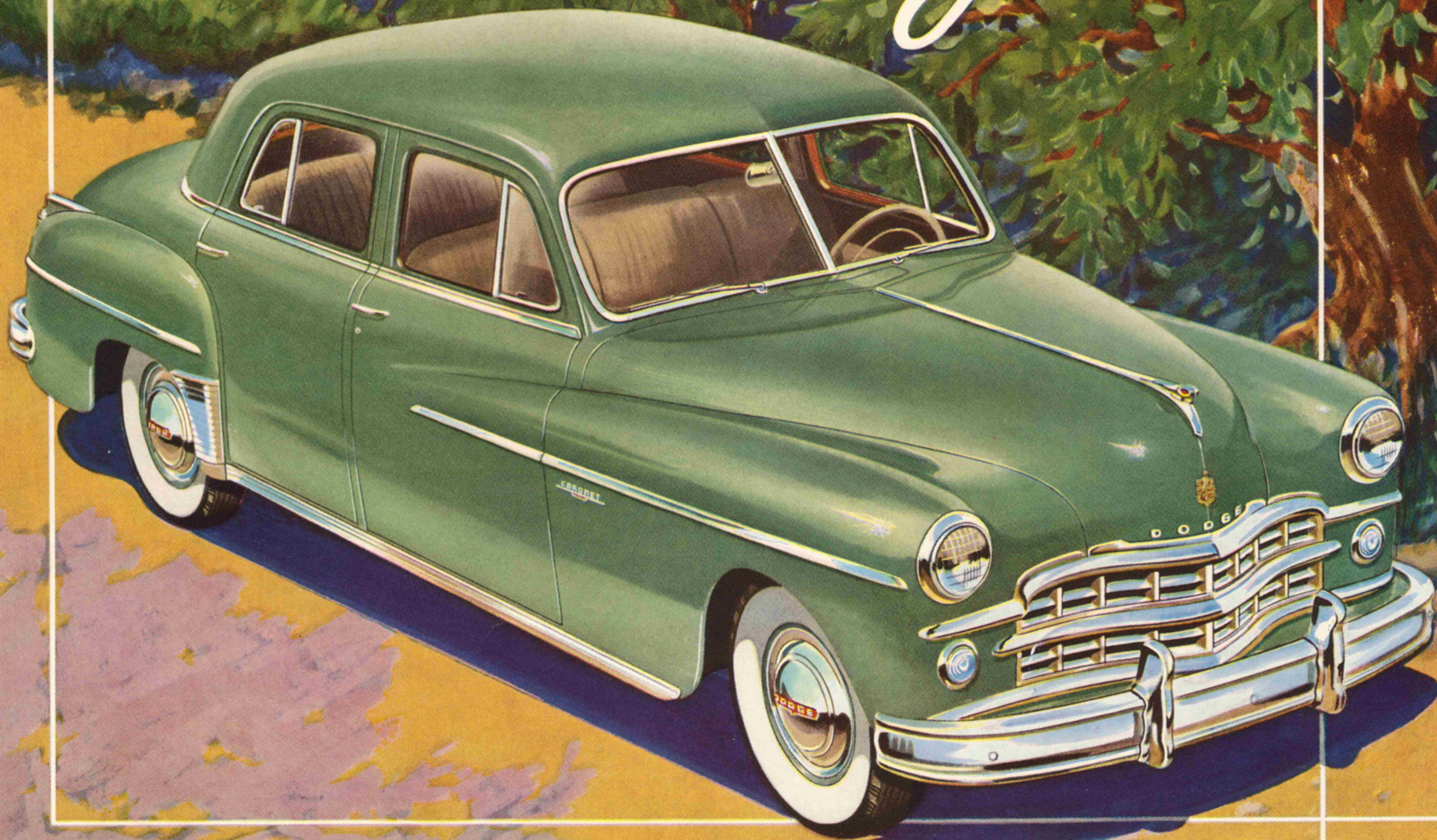


Dodge



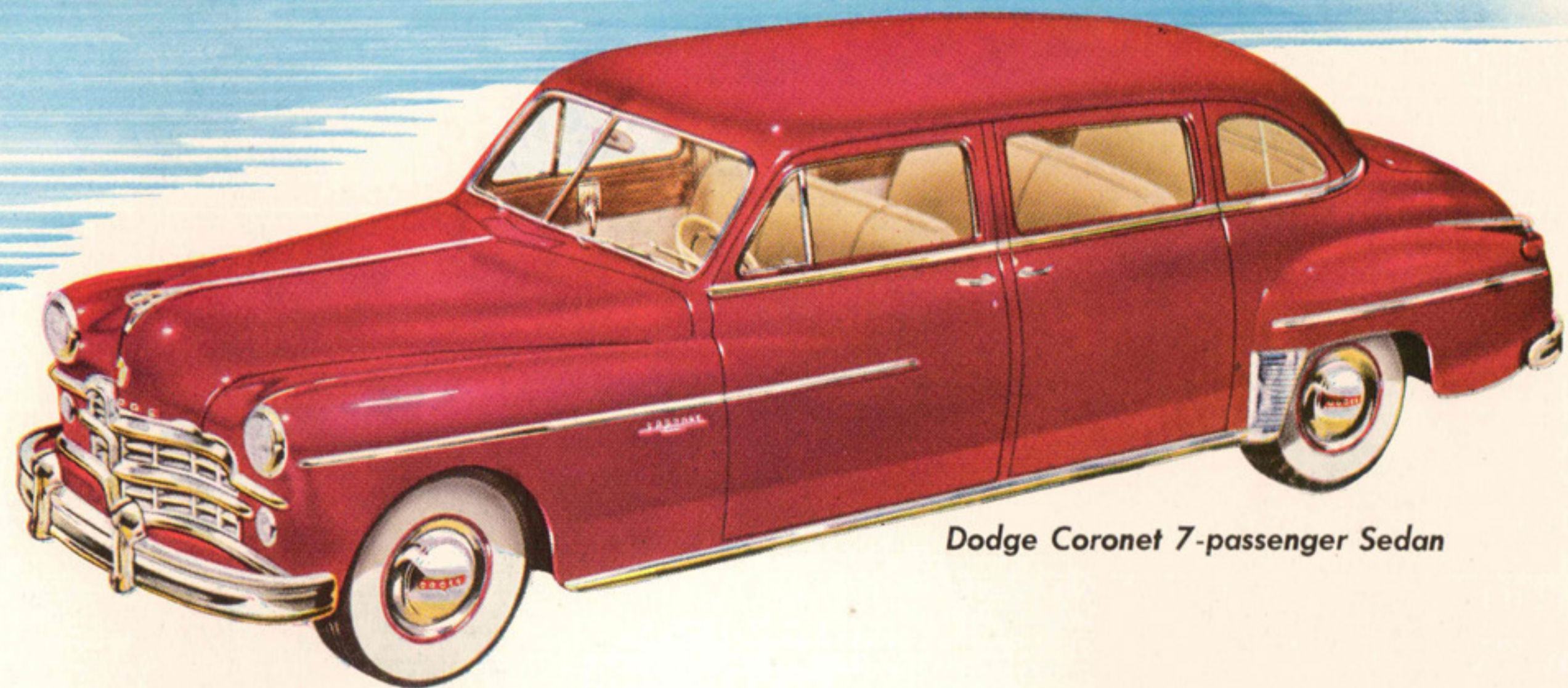
HERE IS NEWNESS BUT WITH GRACE OF LINE

The New Dodge Is DIFFERENT

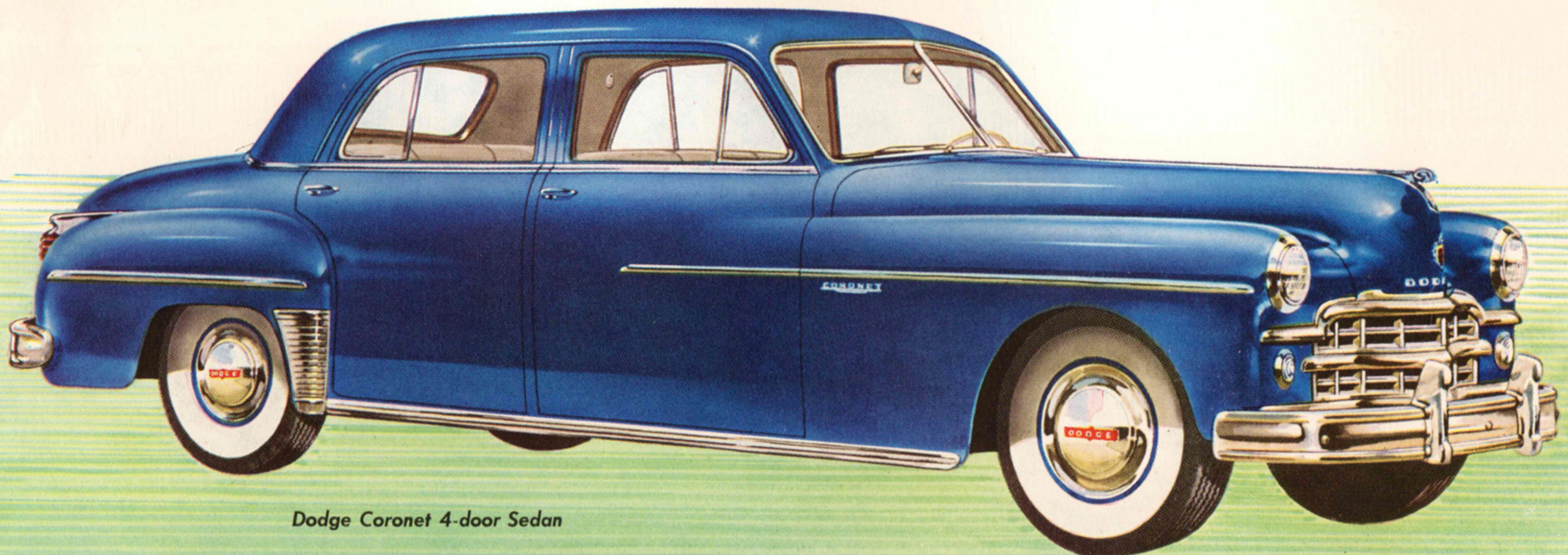
THE NEW DODGE brings you a distinctive new style with spacious interiors that give you more head room, elbow room and leg room—plus an amazingly smooth ride. In fact, Dodge gives you everything that you'd expect to find in a fine motor car. **LOWER OUTSIDE, HIGHER INSIDE**—Head room is actually greater than before . . . yet overall car height has been reduced. You can wear a hat in comfort anywhere in the car. **NARROWER OUTSIDE, WIDER INSIDE**—Front seats are a full six inches wider, rear seats nearly eight inches wider: yet overall car width is almost 3 inches narrower. Easier parking and garaging, too. **SHORTER OUTSIDE, LONGER INSIDE**—More leg room in front and back seats despite reduced overall car length. Rear seat leg room is not affected by adjustment of front seat because foot rest is fixed. **KNEE-LEVEL SEATS**—Dodge seats are "knee-level" to give you full leg support for day-long journeys in real comfort. No more cramped, high-knee sitting with weight supported largely at the base of the spine. **CRADLED FULL-FLOATING RIDE**—The new Dodge brings you an even smoother riding experience. Redesigning of chassis and body locates front and rear seats farther forward for better "cradling" between the axles. **ADDED VISION**—Full-view windshield is 24 per cent larger for better vision. And for safer bad-weather driving, the area swept clean by the wind-

shield wipers has been increased 44 per cent. Rear window is larger, too. **EASY ACCESS**—Doors open wide . . . almost 90 degrees and stay open for easy movement in or out. Rear seat arm-rests are out of your way because they're mounted on the doors. **AIR-**

PLANE-TYPE SHOCK ABSORBERS—front and rear are improved for smoother ride with minimum side sway. **LONGER BRAKE LIFE**—33 per cent longer brake lining life is added by the elimination of rivets on brake linings.



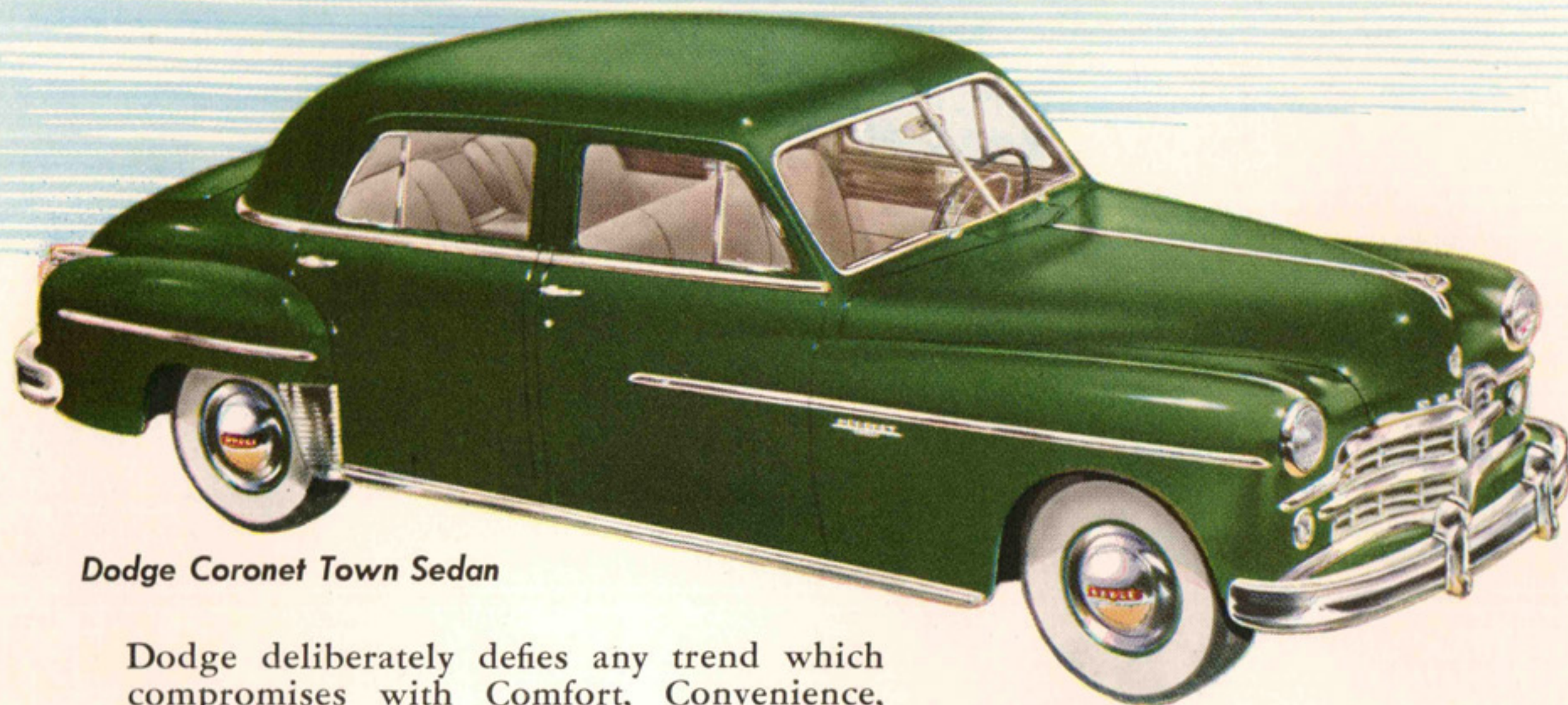
Dodge Coronet 7-passenger Sedan



Dodge Coronet 4-door Sedan

. . . GOOD TASTE AND TRUE ARTISTRY APPARENT IN

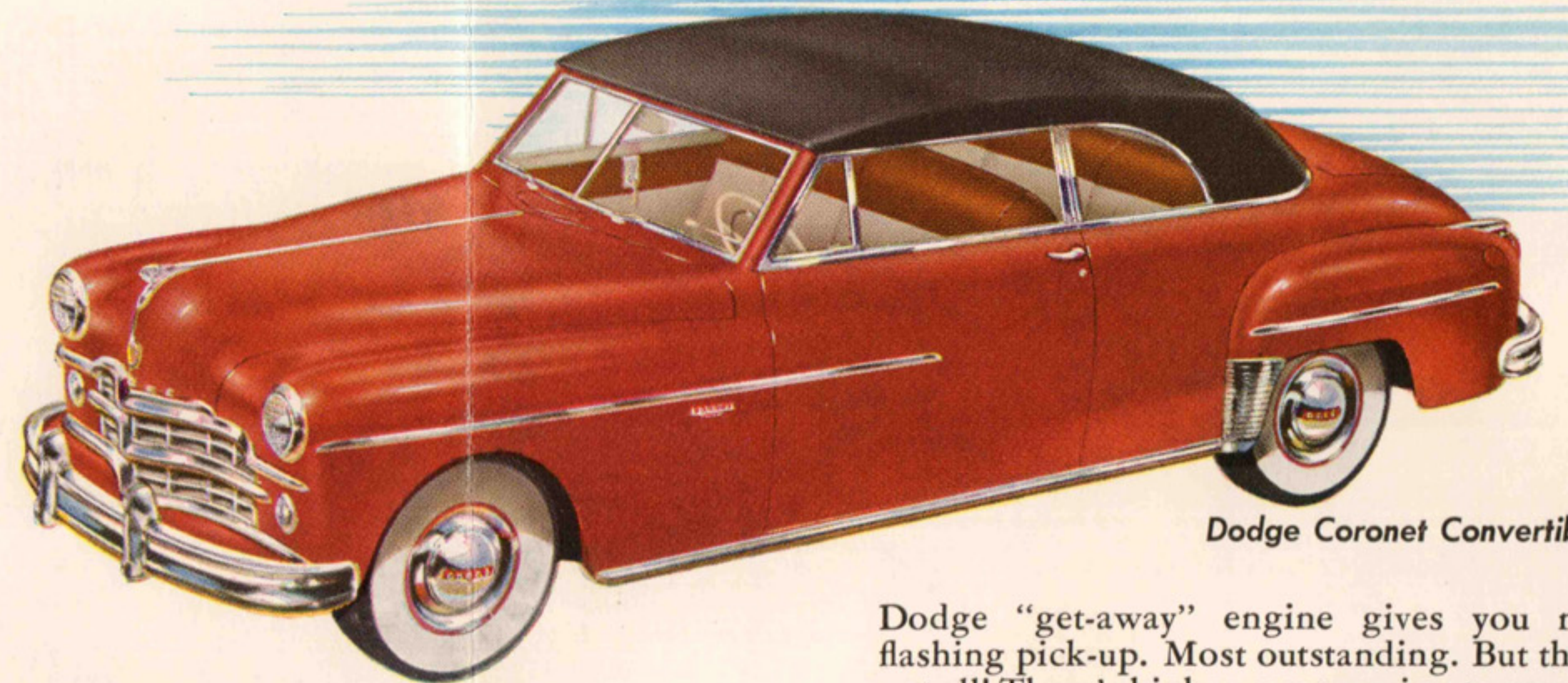
EVERY DETAIL



Dodge Coronet Town Sedan

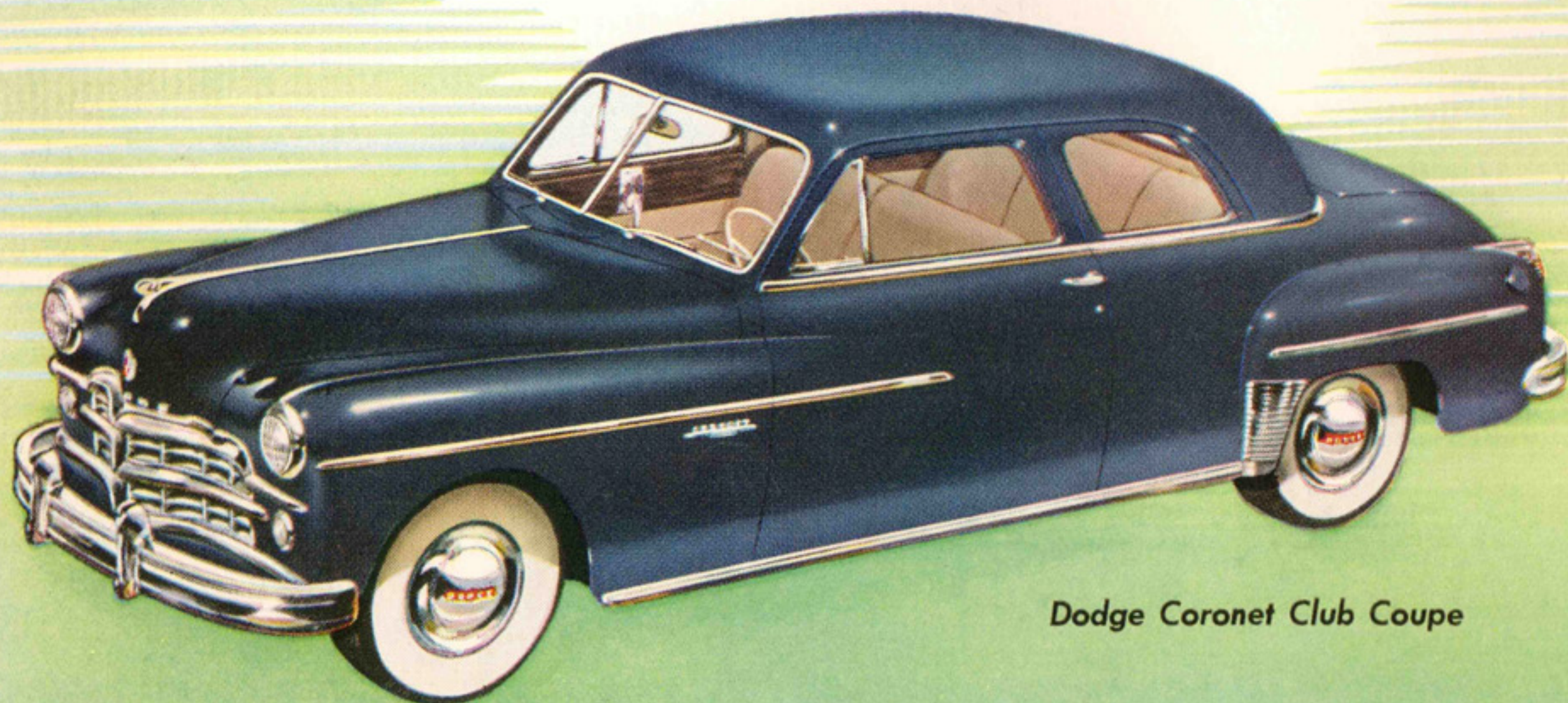
Dodge deliberately defies any trend which compromises with Comfort, Convenience, Safety and Performance. With obviously advanced contours, Dodge has put still greater ease and comfort into motoring . . . to give you a handsome, smart, distinguished automobile that avoids annoying extremes, yet assures you of a car that will be "in style" for years to come.

GYRO-MATIC TRANSMISSION—Now you can drive all day without shifting, if you wish. Your toe does it all! Optional in the Coronet models only, Gyro-Matic frees you from tiresome gear shifting . . . gives you smooth starts in stop-and-go driving.

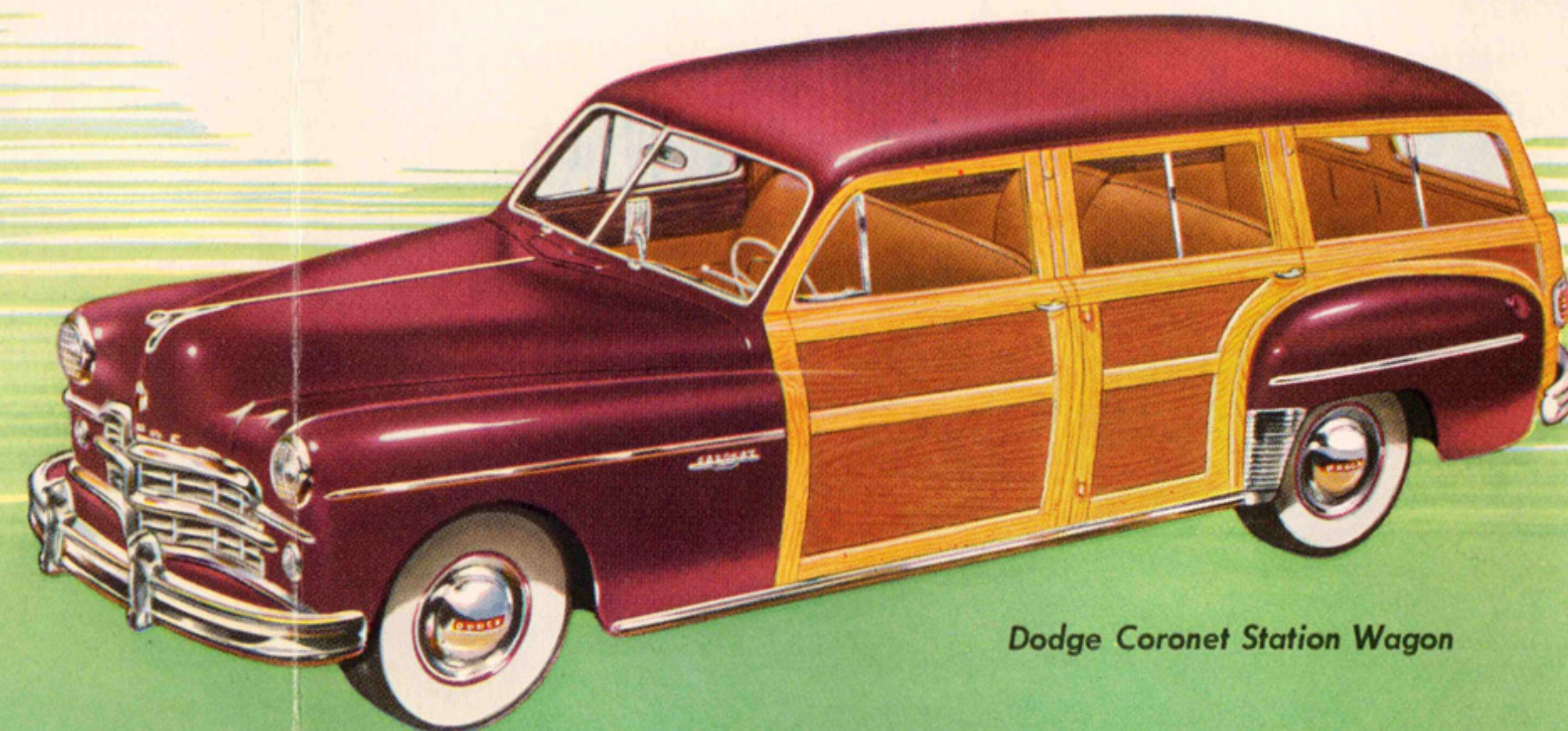


Dodge Coronet Convertible Coupe

Dodge "get-away" engine gives you new flashing pick-up. Most outstanding. But that's not all! There's higher compression to squeeze extra miles from every tankful of fuel. Important, too, is the Dodge "Speed-Proof" process which eliminates slow engine break-in.



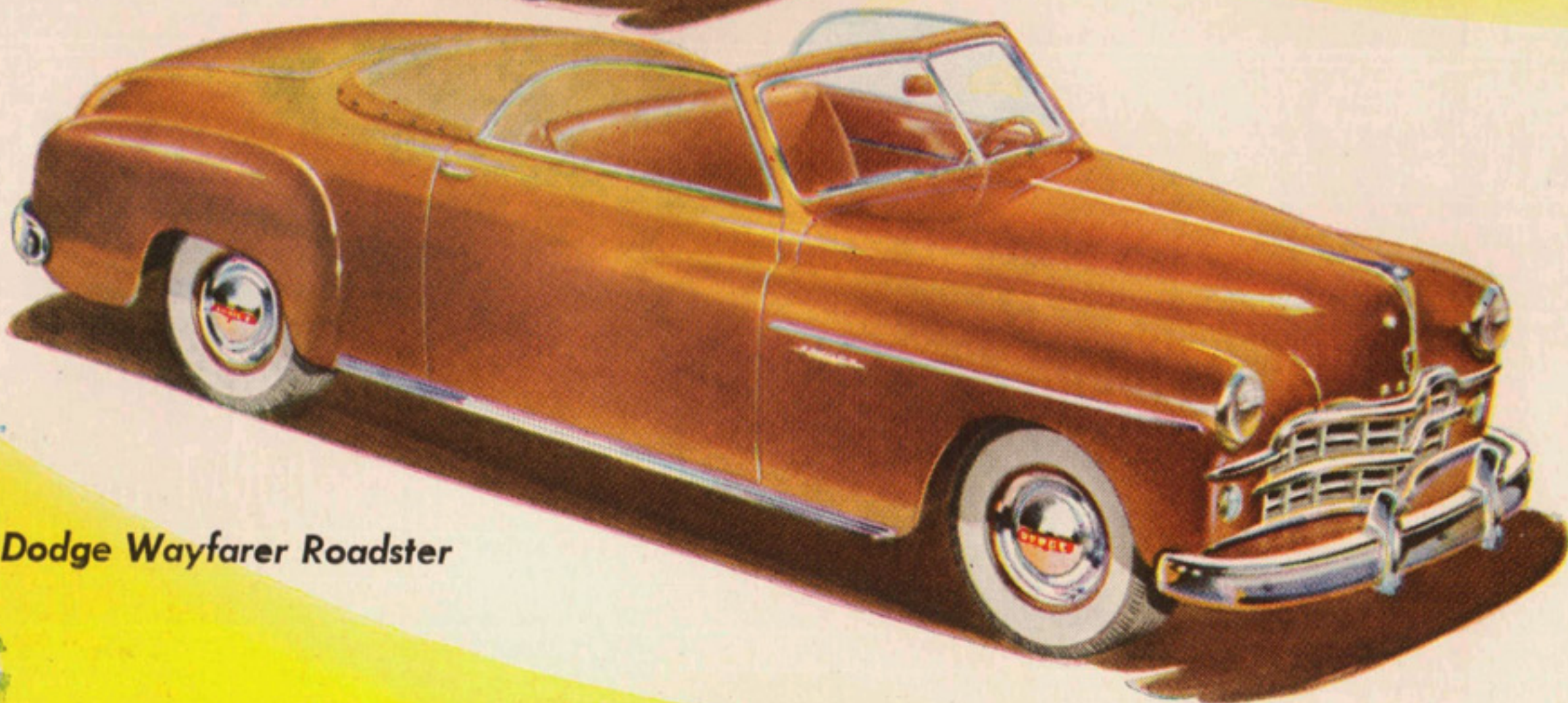
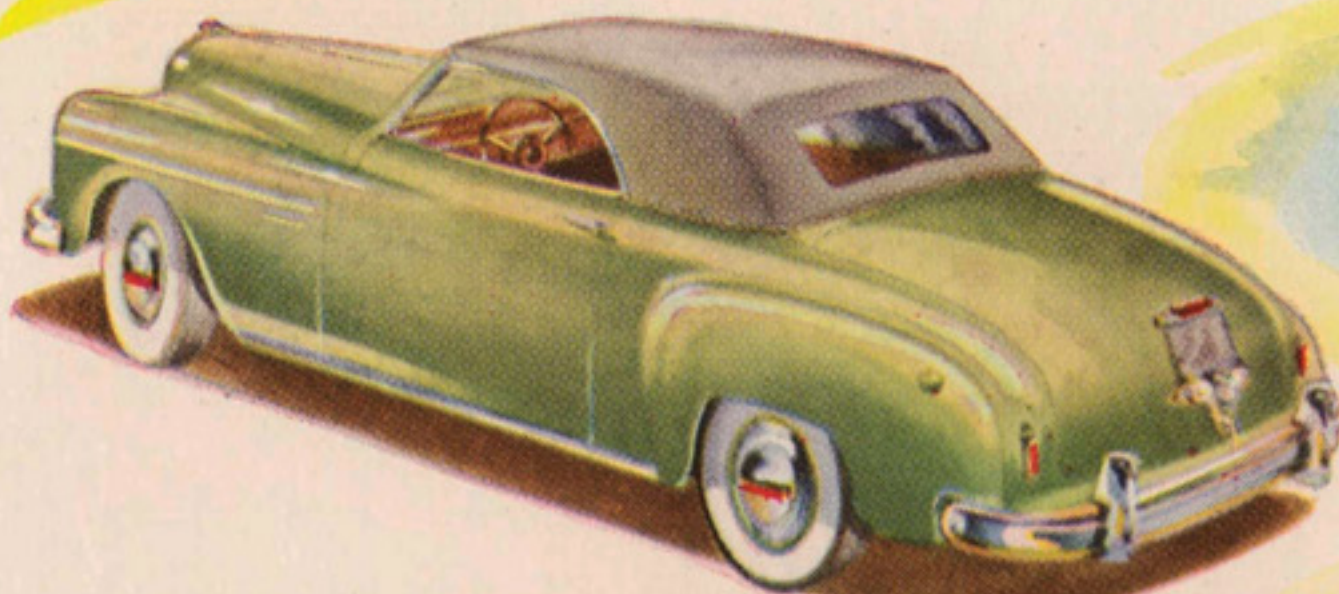
Dodge Coronet Club Coupe



Dodge Coronet Station Wagon

DODGE WAYFARER ROADSTER

Dodge brings back the Roadster! . . . a 3-passenger beauty for people of all ages. Its soft, one-man top is quickly raised or lowered. Easily installed plastic side windows are stored back of seat. And best of all, you'll like its low price!



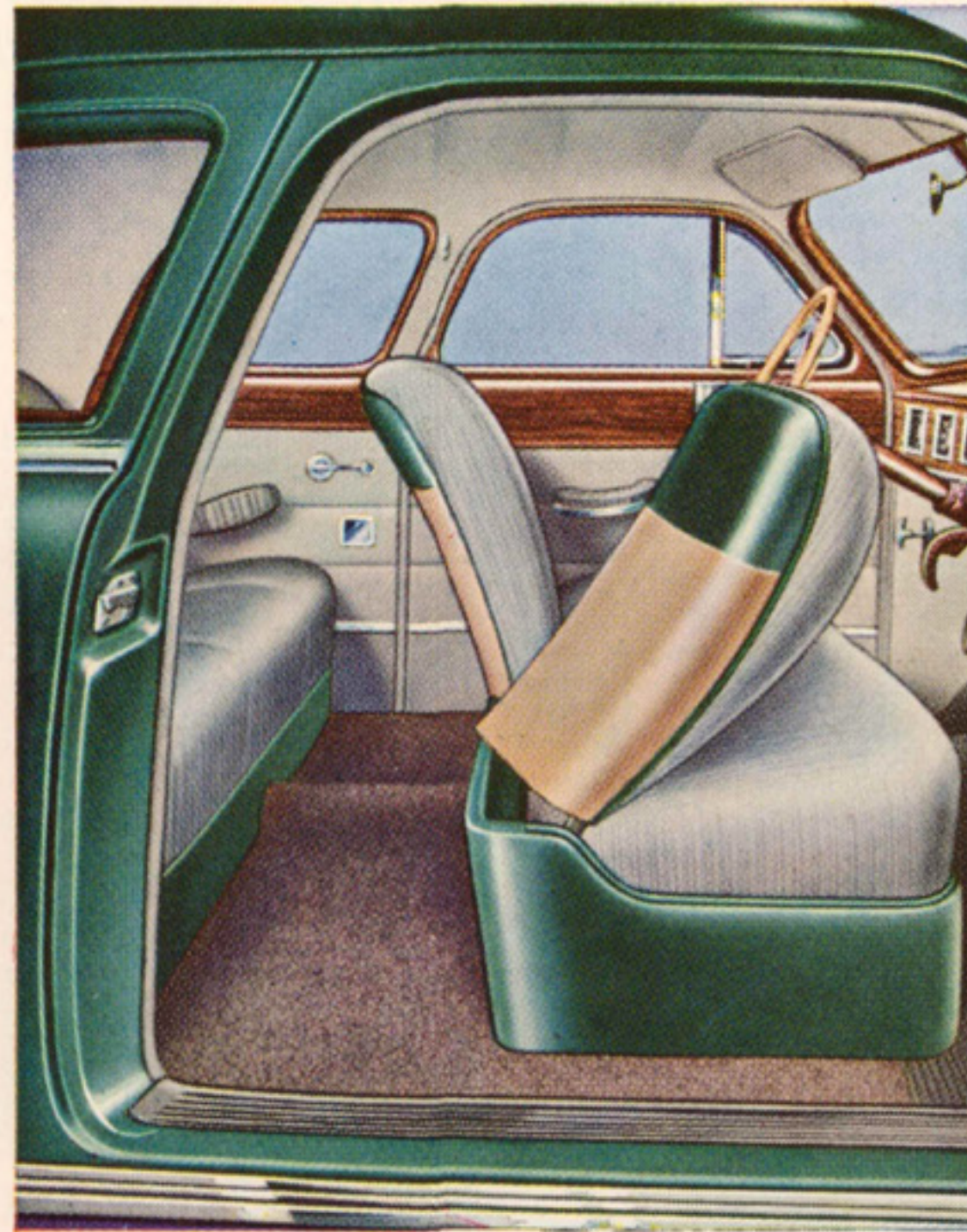
Dodge Wayfarer Roadster

The Wayfarer: An entirely new addition to the Dodge family. Lower in price . . . but with every mechanical improvement and the same power plant as the Coronet. Its shorter 115" wheelbase provides greater maneuverability and parking ease without sacrifice of comfort or performance.

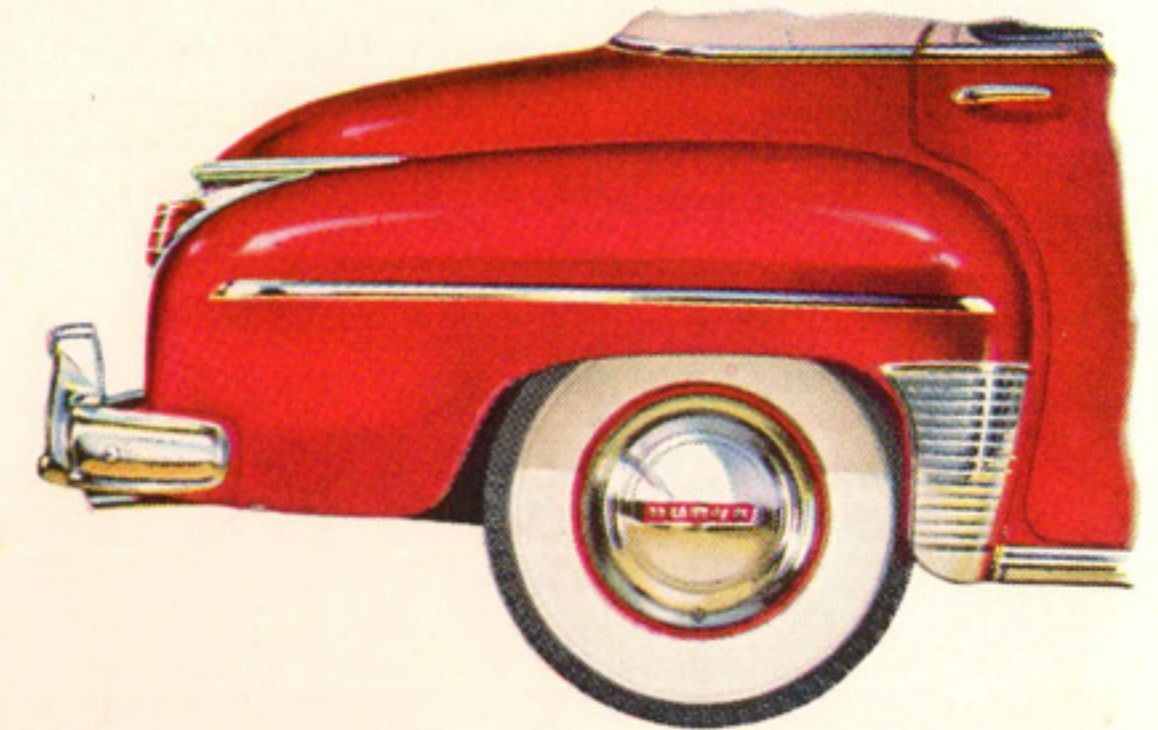
Dodge Brings A New Pride of Ownership



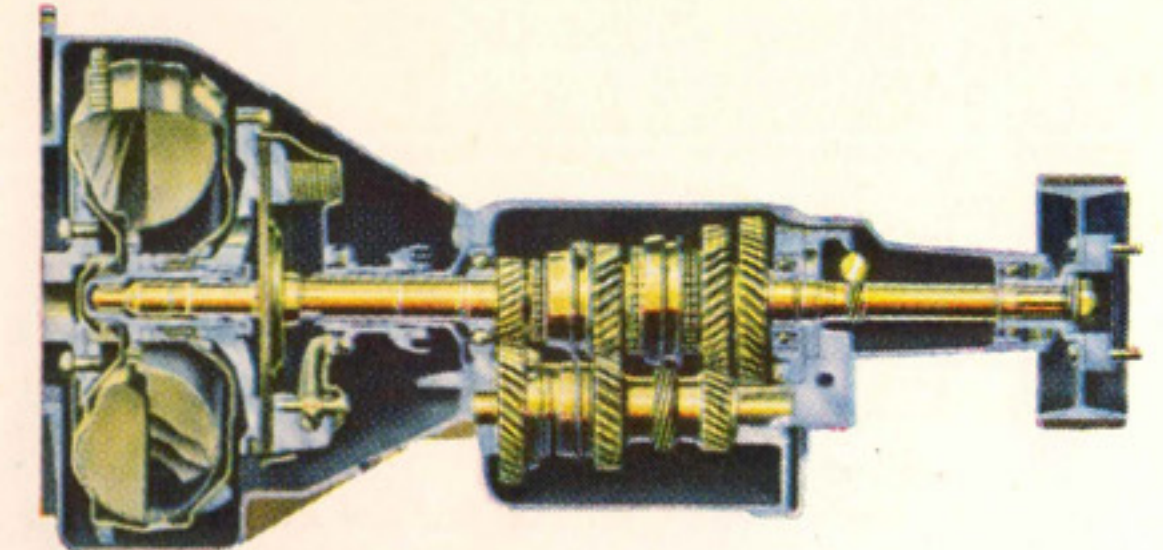
Beautifully Appointed Interiors. In this Coronet Sedan you will recognize custom designing at its finest. Here the emphasis is on simplicity and good taste. The dark mahogany-toned instrument and door panels are accented with a tastefully restrained use of chrome and gold. Those soft, spring-pillowed knee-level seats and backs are tailored in rich fabrics.



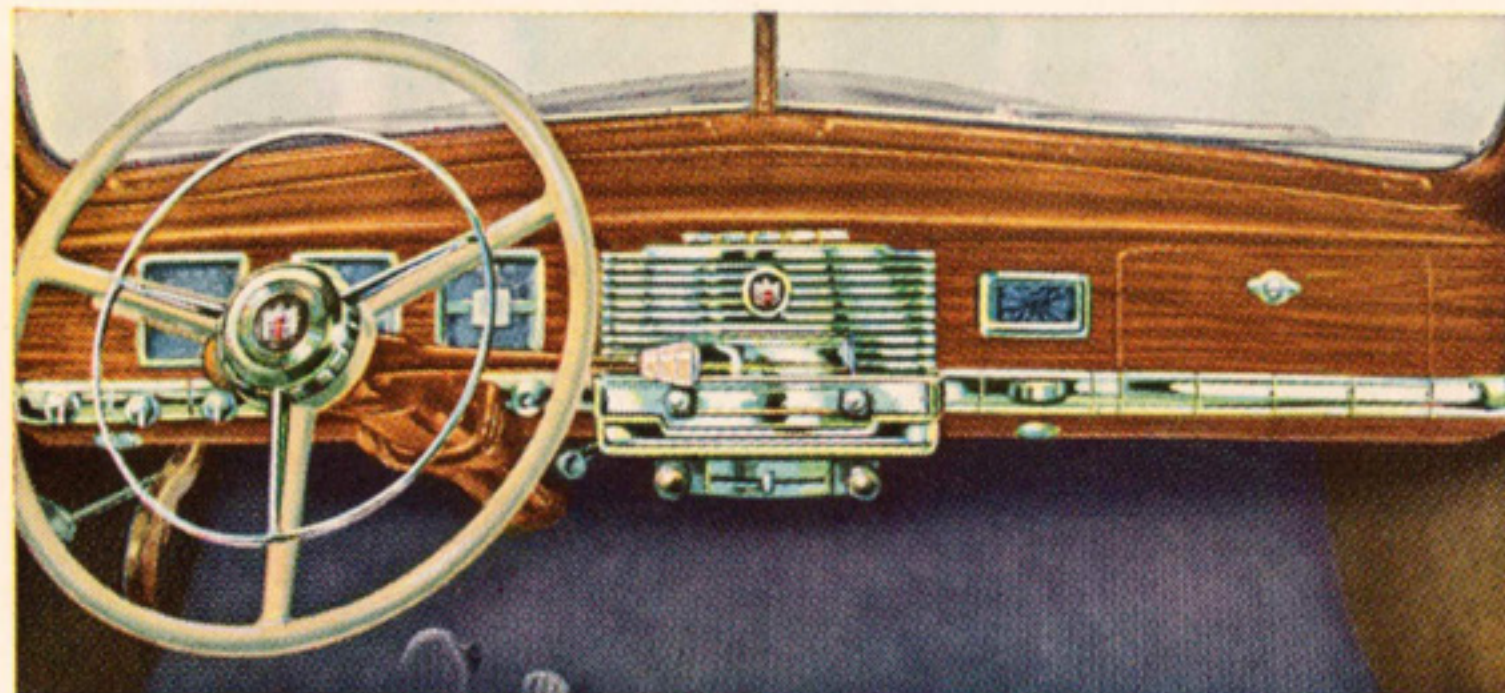
The Club Coupe interior reflects skill and care in design, most apparent when you actually see the new Dodge models. The extra space for rear seat riders is even more noticeable when sitting in the car.



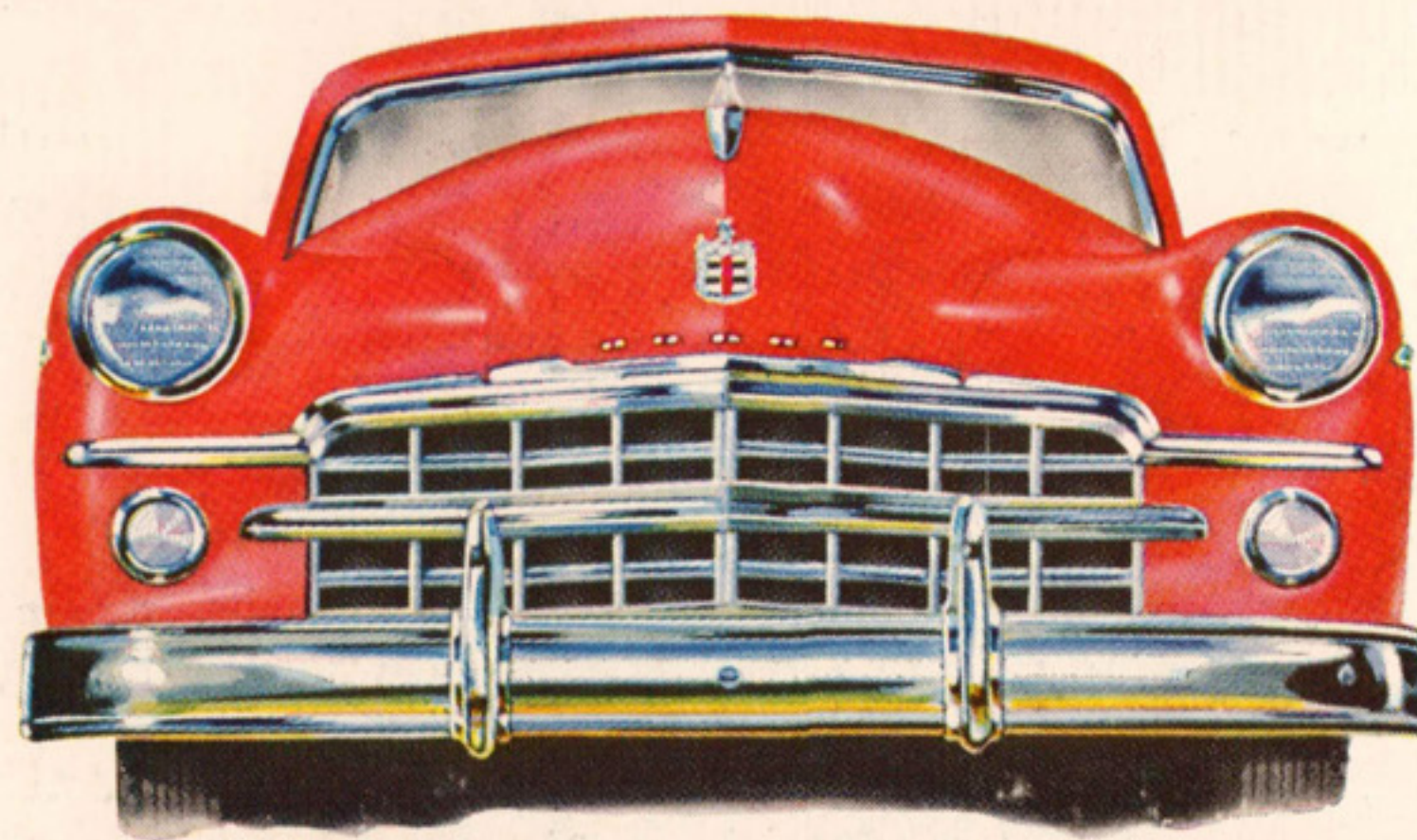
Lower Body and Fender Repair Costs. No massive sheet metal fender sections. Fenders bolted (not welded) to body can be reasonably repaired.



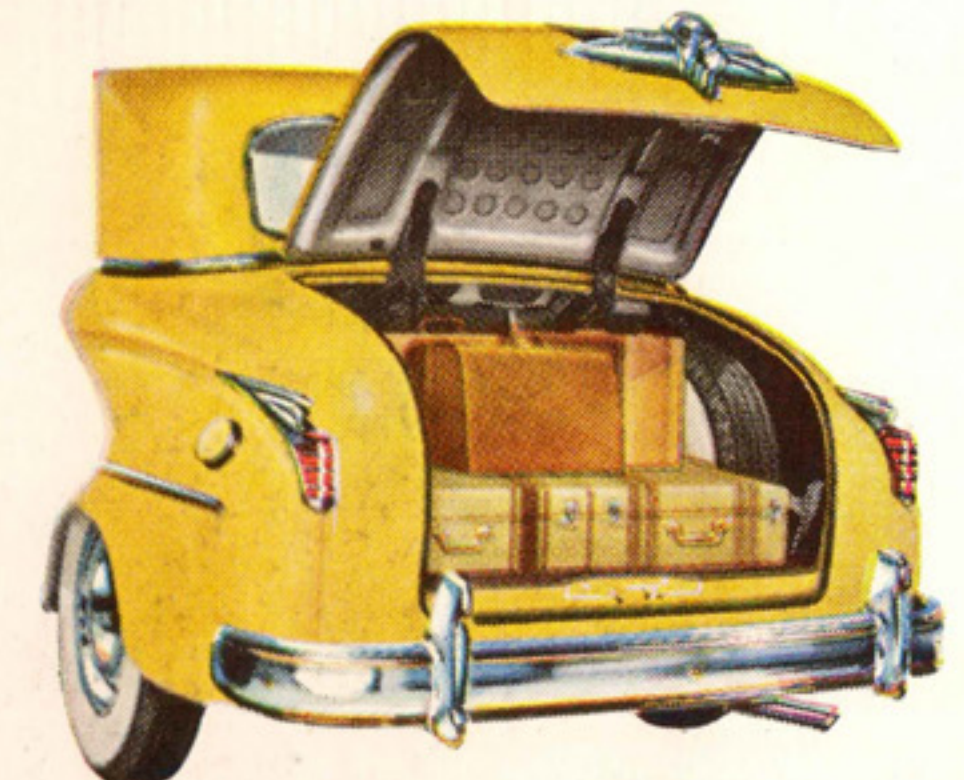
With the Gyro-Matic Transmission, you start the engine, then shift to the usual "high" position and press on your accelerator. When sufficient forward speed is attained, you merely raise your toe and Gyro-Matic shifts into high gear.



The New Instrument Panel is entirely restyled, smart and practical. Instruments are completely visible and easily read at all times. Panel lighting is adjustable to any degree from brilliant to dim. All controls are positive-action rotary type. Two map lights under panel, automatically controlled as right front door opens and closes.



Safer Night Driving. Road visibility is greatly improved by the new front end design which spaces the new higher powered sealed beam headlights $5\frac{3}{4}$ " farther apart and $1\frac{3}{4}$ " higher. Notice, too, the massive new chrome finished grille, so easily washed and kept bright and clean.



More Luggage Space. See how body contours provide a trunk compartment of unbelievably large proportions with every cubic foot of space entirely usable. The spring-balanced trunk lid raises and lowers at the touch of your fingers.

SPECIFICATIONS

DODGE CORONET 123½" AND 137½" WHEELBASE AND DODGE WAYFARER ROADSTER 115" WHEELBASE

• **ENGINE**—Six-cylinder, L-head type, Floating Power mounted. Bore 3¼" (82.55 mm.). Stroke 4⅝" (117.5 mm.). Piston displacement 230.2 cu. in. (3.77 liters). Compression Ratio 7.0:1. Low compression cylinder head optional. A.M.A. horsepower 25.35. Developed brake horsepower 103 at 3600 r.p.m. Plated aluminum alloy, lightweight pistons with 4 coated piston rings each. Chemically treated cylinder walls. Four-bearing, counterweighted crankshaft. Damped, dynamic vibration absorber*. Precision-type, high-duty crankshaft and connecting rod bearings. Silent chain driven camshaft. Four camshaft bearings.

• **ENGINE LUBRICATION**—Pressure oiling from high capacity rotor-type oil pump, through rifle-drilled cylinder block passages to main, connecting rod and camshaft bearings. Pressure spray to pistons, piston pins, valve stems, cams and tappets. Camshaft drive chain lubricated by oil stream from camshaft. Crankcase ventilator. "Micronic Filtration" oil filter with replaceable radial-type element*. Crankcase capacity, 5 quarts (4¾ liters). Oil pressure gauge on instrument panel.

• **FUEL SYSTEM**—Plain-tube down-draft carburetor with idle adjustment and adjustable accelerating pump. Automatic manifold heat control. Automatic electric choke control. Oil bath air cleaner. Intake silencer*. Mechanical diaphragm fuel pump driven from camshaft. Fuel tank capacity, 17 U.S. gallons (64 liters). Electric fuel gauge on instrument panel. Self-cleaning Oilite filter in fuel tank at outlet.

• **COOLING SYSTEM**—Cellular radiator core. Centrifugal water pump. Directional circulation, uniform to all cylinders and valves. Full-length water jackets. Thermostat control. By-pass circulation*. Water capacity 3¾ U. S. gallons (14.18 liters). Four-blade 17¾" fan.

• **FLUID DRIVE**—Thirteen inch (33 cm.) diameter coupling. Ball type coupling hub bearing. Oilite bushings on coupling runner inner bearing.

• **CLUTCH**—Dry, single-plate 9¼" (23.5 cm.) diameter clutch with cushion center. Molded woven asbestos facings. Ball-thrust release bearing with lubricants sealed in.

• **TRANSMISSION**—Silent, Constant-Mesh, Easy-Shift, 3 speed transmission with helical gears of carburized Amola steel. Steering column control. Forced ventilation. Blocker-type synchronizer. Seven anti-friction bearings.

• **GYROMATIC TRANSMISSION**—Available as extra equipment on Coronet models only. Hydraulically operated, four speeds forward, one reverse. Built-in control unit.

• **REAR AXLE**—Semi-floating Hypoid rear axle. Pressed-steel, banjo-type housing. Hypoid gears and axle shafts of Amola steel. Tapered roller bearings. Ratios with Fluid Drive and Standard Transmission: Wayfarer Roadster, 3.73; Coronet models 4.1, except 7-Pass. Sedan and Station Wagon, 4.3. Hotchkiss drive through springs.

• **SUSPENSION**—Independent front wheel springing with coil springs of Amola steel. Grooved, Amola, soft acting, Semi-Elliptic rear springs, length 53⅝" (1.362 m.), width 1¾" (4.5 cm.). All leaves with tapered ends. Rubber cored bushings at front. Rubber cushioned shackles at rear. Heavy-duty telescopic type shock absorbers front and rear. Rear shock absorbers in new "sea leg" position for greater stability. Steering gear ratio 18.2:1. Front end sway eliminator.

• **CHASSIS FRAME**—Super rigid double channel frame. Box-section steel side rails, ⅜" (2.38 mm.) thick. Maximum depth, 6" (15.2 cm.), outside width at maximum depth, 3⅜" (9.92 cm.). On 7-Passenger Sedan and Station Wagon: ⅝" (3.57 mm.); 6⅞" (16.59 cm.); 3⅝" (9.96 cm.).

• **ELECTRICAL SYSTEM**—6-volt ignition. Fully automatic spark advance, speed and vacuum control. Shunt-type generator with voltage and current control. Generator ventilated by centrifugal fan. Ignition-key operated starter. 15-plate battery, capacity 105 ampere hours, located under hood in left fender shield. Headlights sealed-beam type with foot control. Dual air horns*. Full-circle horn ring on steering wheel on Coronet models. Horn button in center of steering wheel on Wayfarer model. Dual tail lights, Stop light and front parking lights have plastic lenses. Rear license plate light. Directional signals available as special equipment.

• **BRAKES**—Improved type hydraulic, 4-wheel internal expanding utilizing an individual cylinder for each shoe in the front wheel brakes, self-equalized and weather-proofed. Cast iron brake drums with Superfinished surface. Drum diameter 11" (27.9 cm.). 10" on Wayfarer. (12" on Station Wagon and 137½" W.B. models.) Molded asbestos brake lining 2" wide (5 cm.) Cycle-bonded to shoes, to dispense with rivets and increase lining useful area and life. Separate hand brake at rear of transmission.

• **WHEELS AND TIRES**—Demountable steel disc wheels with Safety Rims. Goodyear Super-Cushion tires, black, 4-ply, are standard. Sizes: Wayfarer, 15 x 6.70; Coronet, 15 x 7.10, except 7-Pass. Sedan which has 15 x 8.20 and Station Wagon, 15 x 7.60. Heavy Duty 6-ply and White Sidewall in 4-ply and 6-ply are also available at extra cost.

*On Coronet models.

All specifications, equipment, models, body types, ornamentation and design subject to change without notice and without responsibility to the Chrysler Corporation, Export Division.

BODY FEATURES

Bodies are entirely new and have more passenger space within their modern exterior lines. By sound design exceptional roominess and better cradling of passengers between the axles are provided.

Fenders blend harmoniously with body lines but are removable to facilitate repairs. Tire changing is easy. New "ridged" bumpers. The "wrap around" ends of rear bumper slightly recessed into rear fenders.

Larger windshield area. Greater wiper sweep. Chair-height seats, low front fenders and hood permit better view of road in front.

Roomy luggage space with light. Out-of-the-way, rattle-free mounting of bumper jack to right of vertically carried spare tire. Combination license frame, stop light and deck lid lock in one unit.

Instruments

New grained finish instrument panel has easily read and well lighted gauges with square chrome frames. Rotary switches replace push-pull type. New combination ignition-starter switch on instrument panel. In the Coronet, a new chrome radio grille bears Dodge crest and clock is mounted to left of glove box door. In the Wayfarer, a removable center panel in new grained finish has Dodge crest and clock hole has plastic cover bearing series name.

The new steering wheel is of hard rubber finished in metallic enamel. The Coronet has chrome horn ring while the Wayfarer has horn button that bears Dodge crest.

Appointments

Coronet Sedan has vent wings in rear windows. Ash receiver bearing Dodge crest in back of front seat. Imitation leather kick pads around base of rear seat cushion, base of doors and base of front seat. Garnish molding has same grained finish as instrument panel and heavy chrome plate at door handle. Hinging rear door from center post provides easy access to and exit from rear seat, eliminating need for an assist strap.

The tamper-proof vent window lock is an additional theft-preventer. The new button is easily spun in with the tip of a finger to lock it in closed position.

Wayfarer Roadster

An open-air Roadster of special appeal and interest because of the popularity this type of sport car has enjoyed overseas. Replacing old style curtains, plastic side windows with metal frames all-around have two vertical posts that slide into position. When removed, plastic windows are stored in imitation leather pocket in back of seat.

Noteworthy features are flashing performance, increased maneuverability and ease of parking.

CHRYSLER CORPORATION—EXPORT DIVISION • DETROIT 31, MICHIGAN, U. S. A.