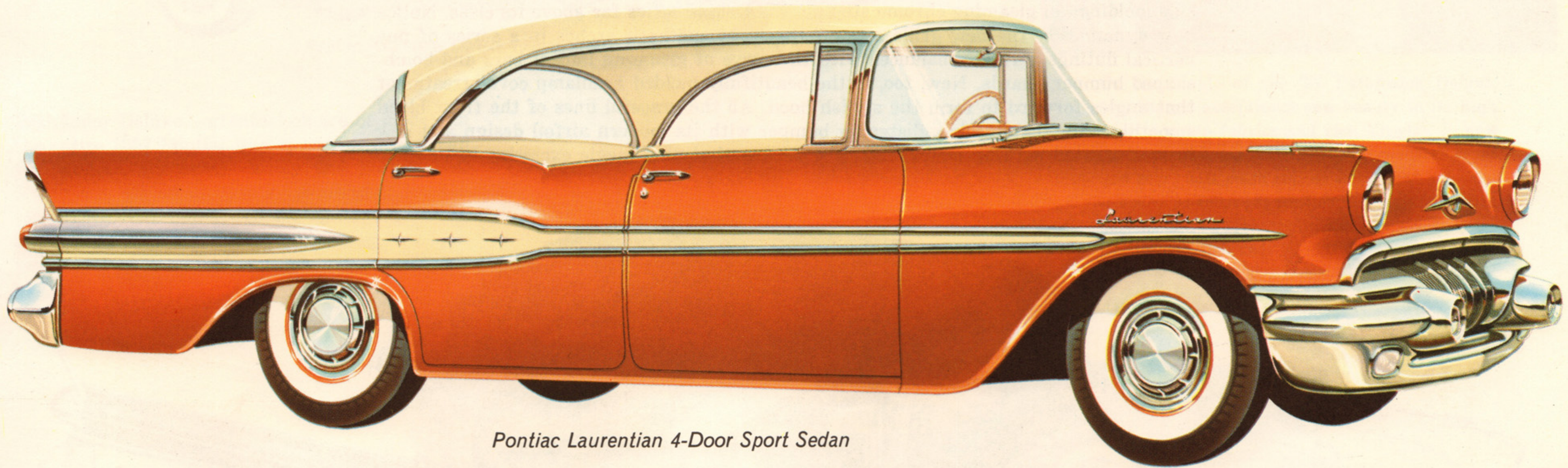


# PONTIAC SIX for 1957





# 1957 LAURENTIAN SERIES



*Pontiac Laurentian 4-Door Sport Sedan*

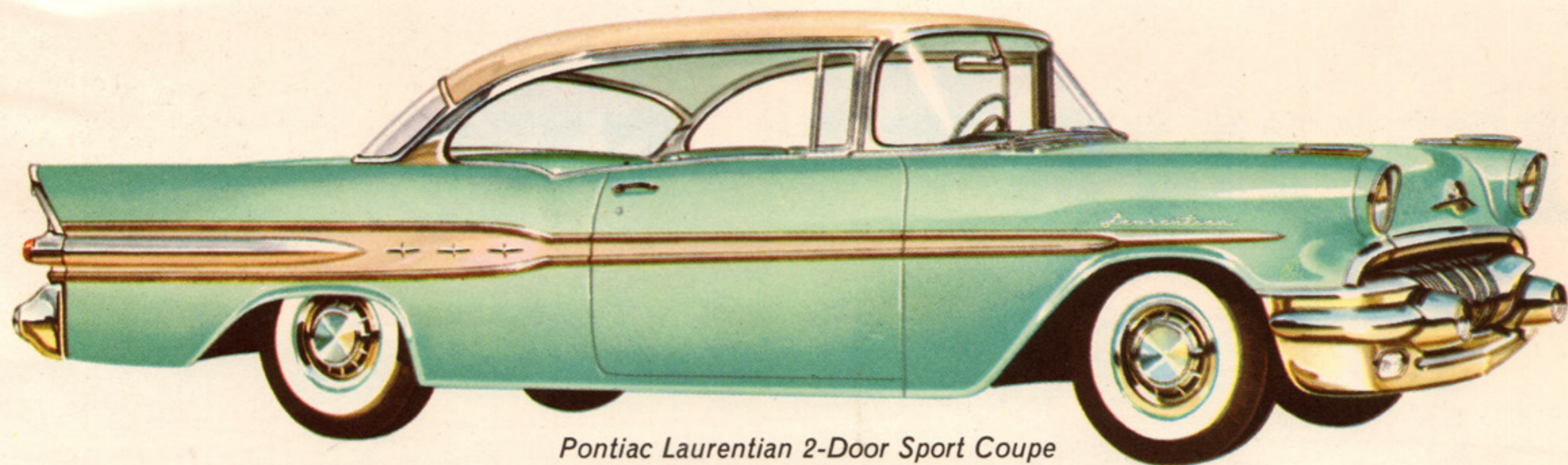
You see the new personality of the 1957 Pontiac Laurentian with the first thrilling look at the graceful, longer, lower silhouette. From bumper to road-hugging bumper there is a new dash—a new sensational feeling of vitality and color that makes Laurentian the car with the most sweeping changes of all. Not the least of these is Pontiac's sensational new ride. You'll marvel at its agile high-torque power—the new smoothness of improved transmission performance of new Powerglide or Three-Speed Synchro-mesh. Here are cars built for deep-down comfort—for effortless driving—for perfect control under every driving condition.

Truly—here is more big-car luxury than any other car in its field!

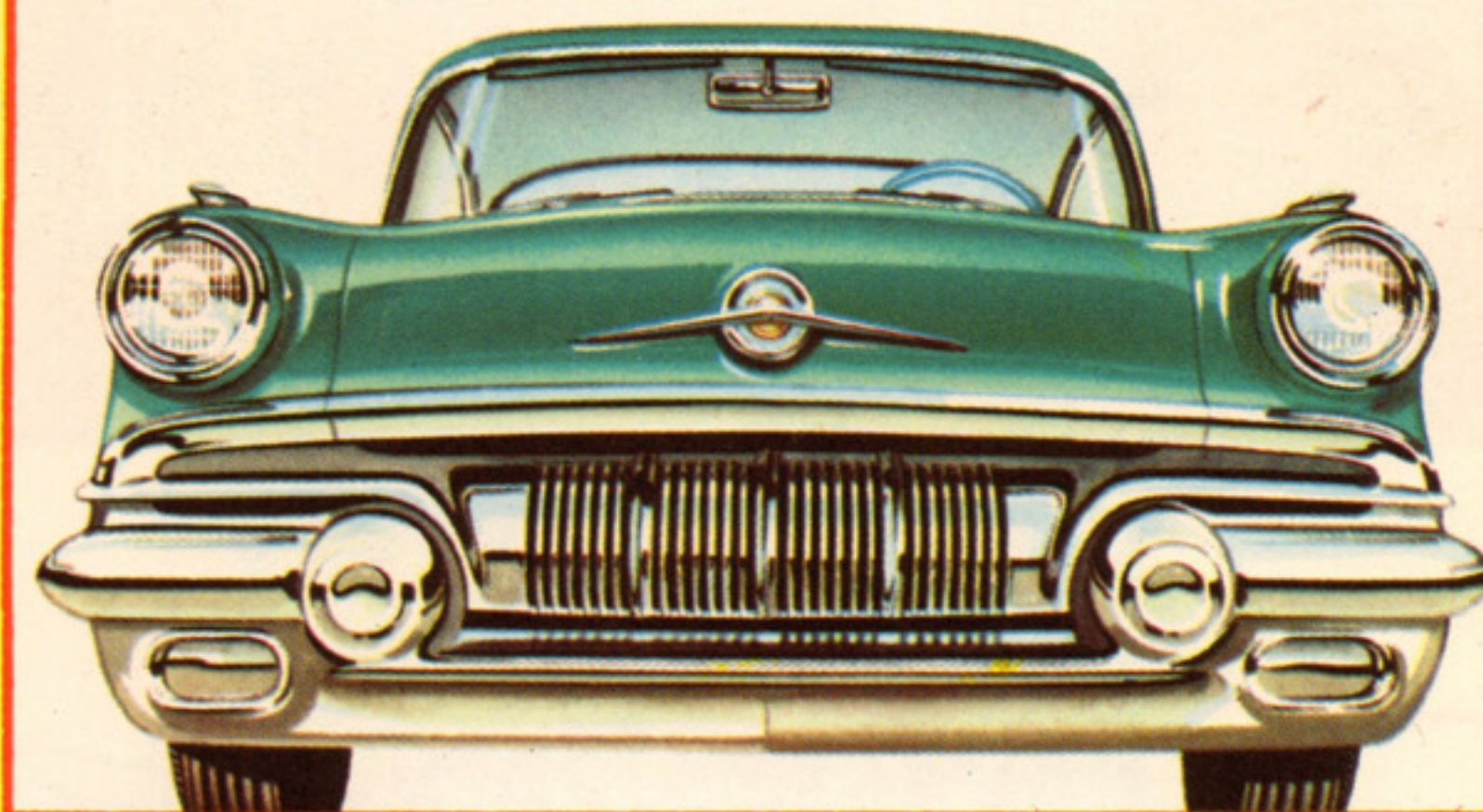
Open wide the door and see beauty at its glamorous best—a thrilling new interior “Off-the-Shoulder” styling. And the range of brilliant new interior combinations is infinite—to harmonize with the grand array of new 1957 solid exterior colors and beautiful, modern two-tone combinations.



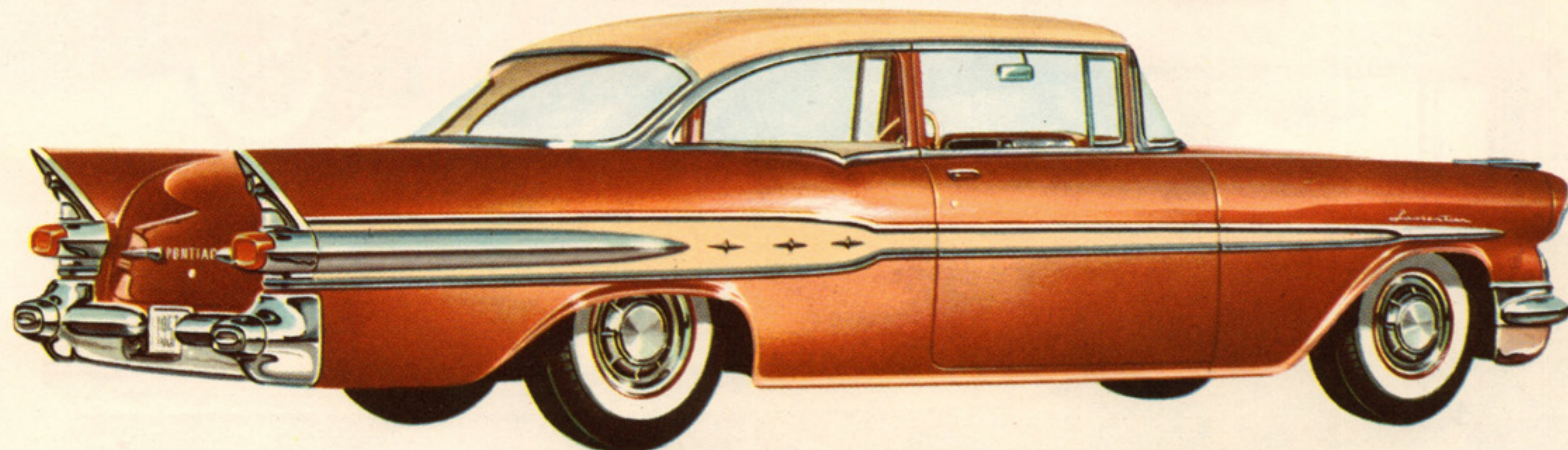




*Pontiac Laurentian 2-Door Sport Coupe*

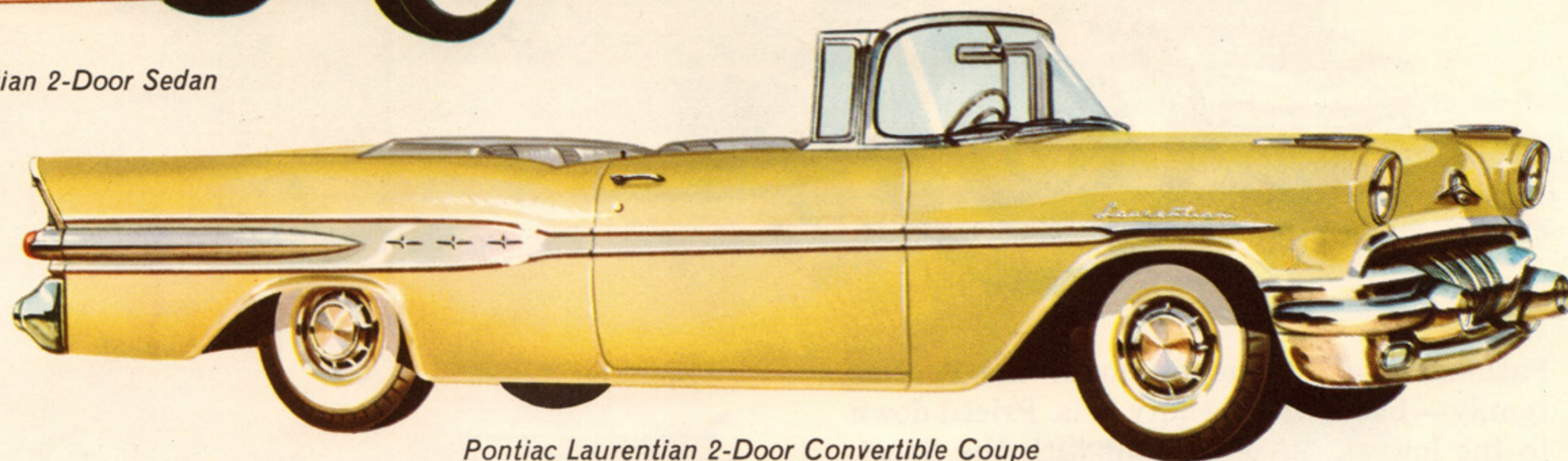


There is a broad fleetness in the graceful lowered lines of the new Laurentian hood as it curves smoothly down to the intriguing grille, symbolic of Pontiac's unsurpassed beauty for 1957. A sleeker look has been achieved with the introduction of the new smaller wheels and broader tires. They contribute to a lower, sportier silhouette in the new 1957 Pontiacs.

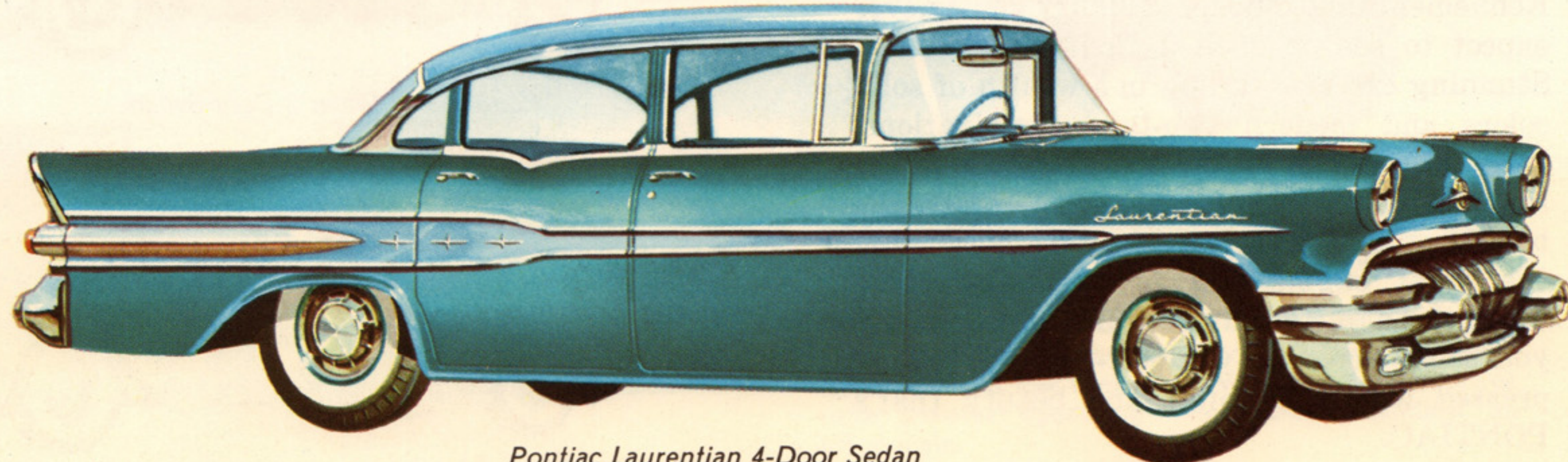
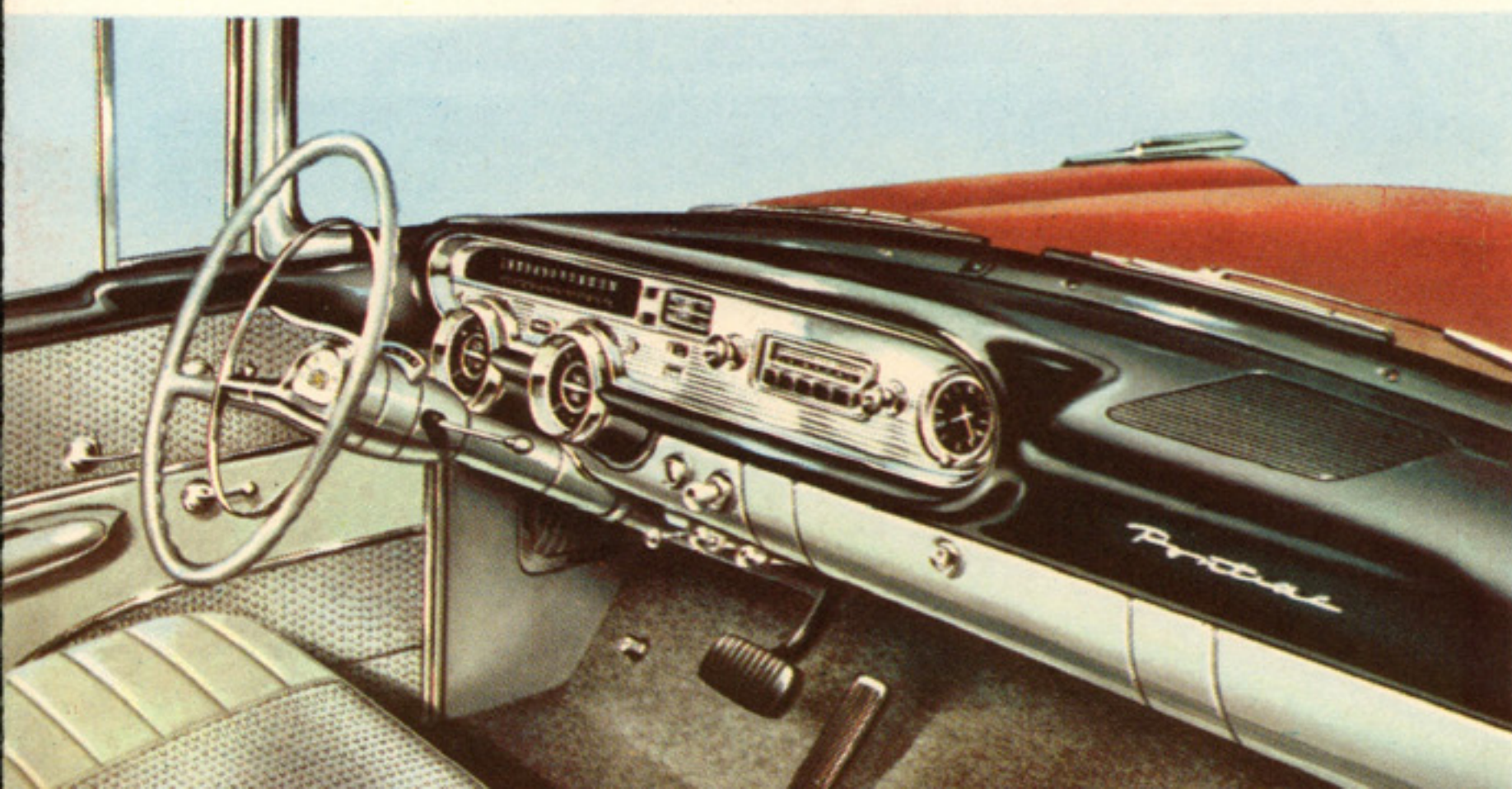


*Pontiac Laurentian 2-Door Sedan*

Complementing the interiors of the new 1957 Laurentians is the convenient and beautiful instrument panel. A new, handsomely styled speedometer graces the panel—all gauges are neatly arranged in two circular dials flanking the steering wheel—all dials have been restyled for readability.



*Pontiac Laurentian 2-Door Convertible Coupe*

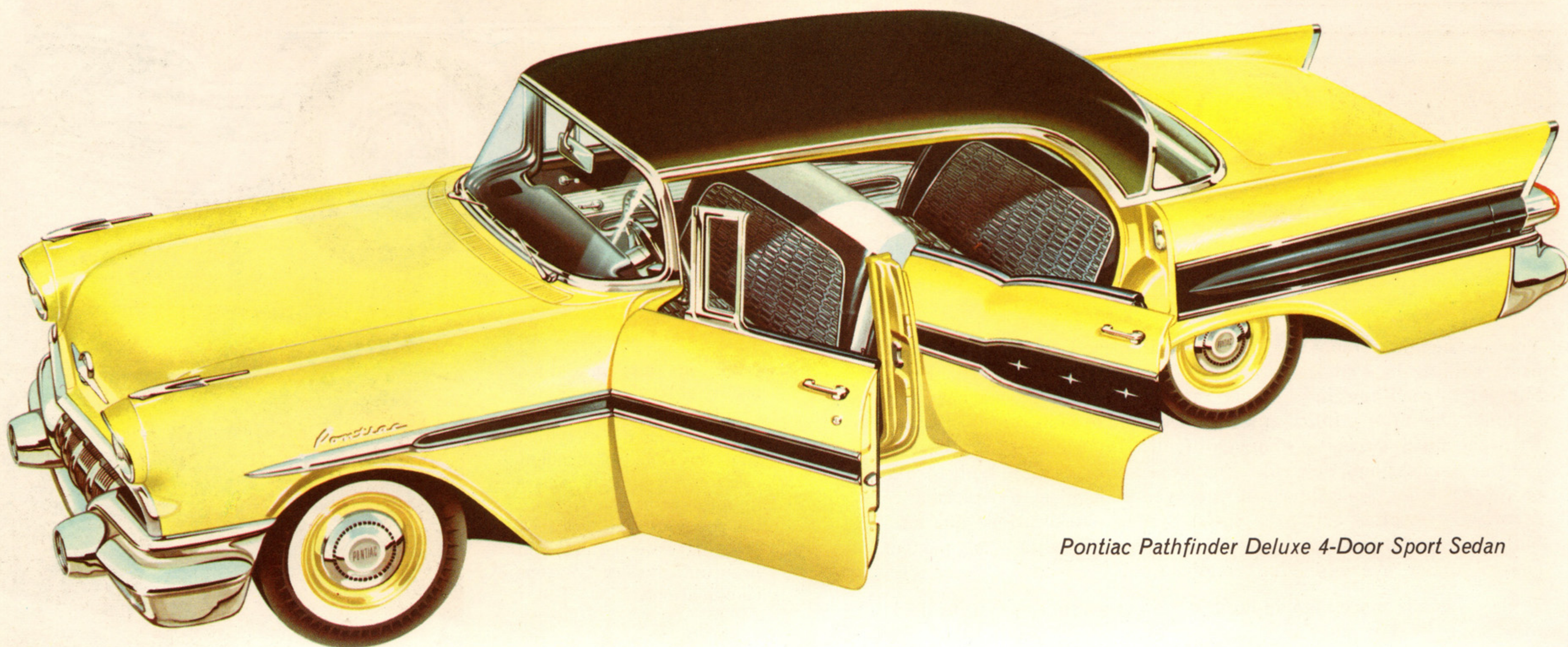


*Pontiac Laurentian 4-Door Sedan*



# 1957 PATHFINDER DELUXE SERIES

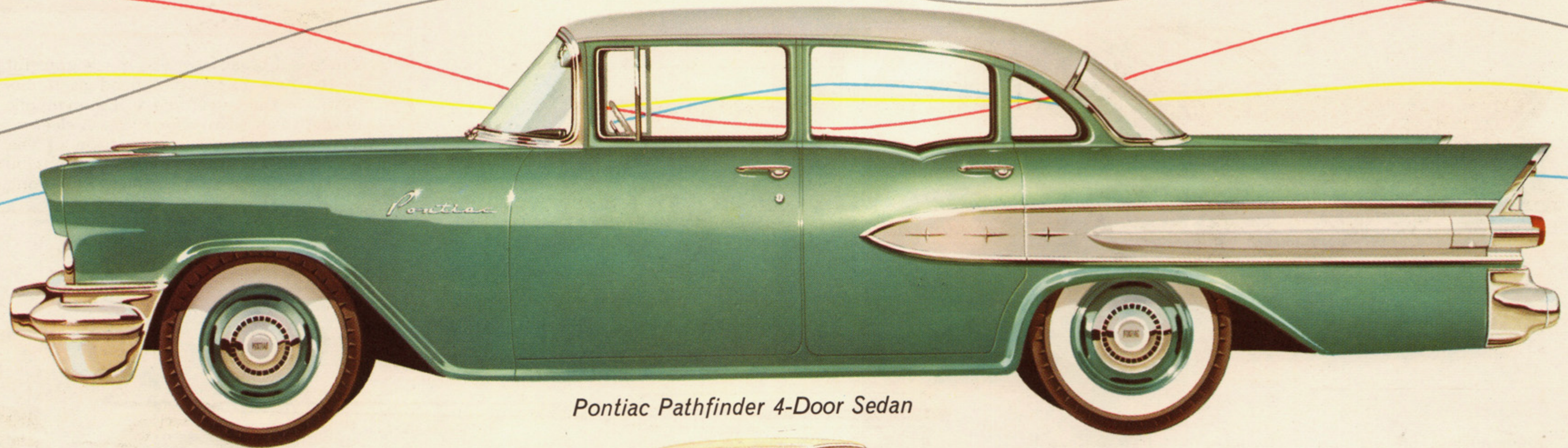
This elegant car is designed to make Pontiac more popular than ever. Clean exterior styling in a wealth of new solid colors and beautiful two-tone combinations . . . full-length side moldings in gleaming chrome step up this Deluxe series far above its class. Notice how dynamically the new grille sets off the front end as it arches in a series of fine vertical flutings perfectly balanced with the curve of gleaming impact bars and bomb-shaped bumper guards. New, too, is the beautifully molded headlamp cover treatment that angles forward to form the stylish hood. All the graceful lines of the front blend smoothly with the massive glistening bumper with its modern airfoil design and new inset elongated parking lamps. Here's a picture of styling magic exclusive to Pontiac.



*Pontiac Pathfinder Deluxe 4-Door Sport Sedan*



# 1957 PATHFINDER SERIES

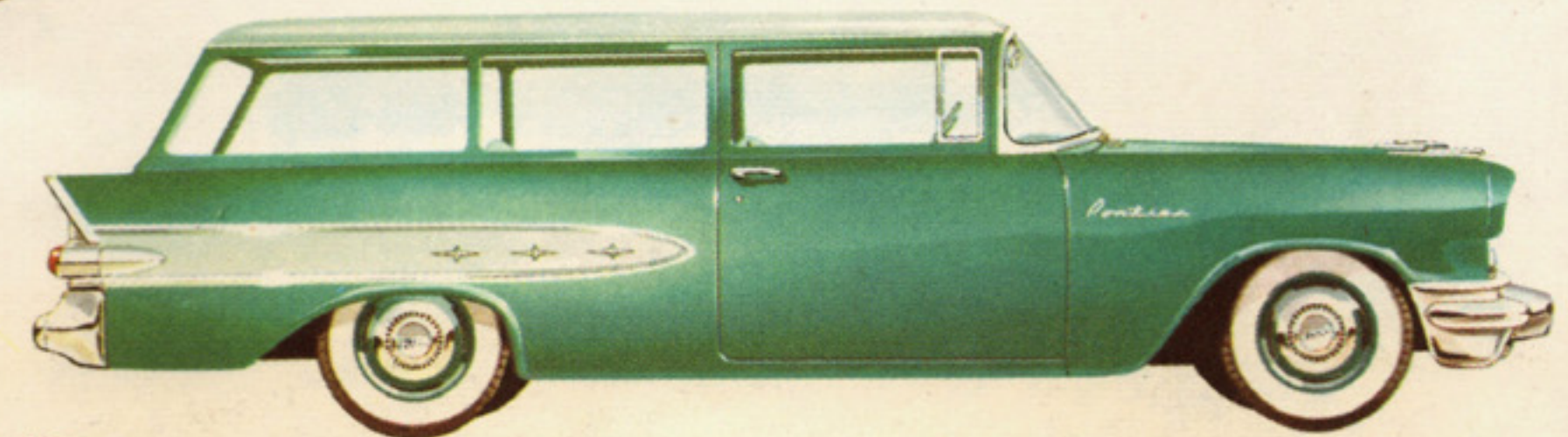


*Pontiac Pathfinder 4-Door Sedan*

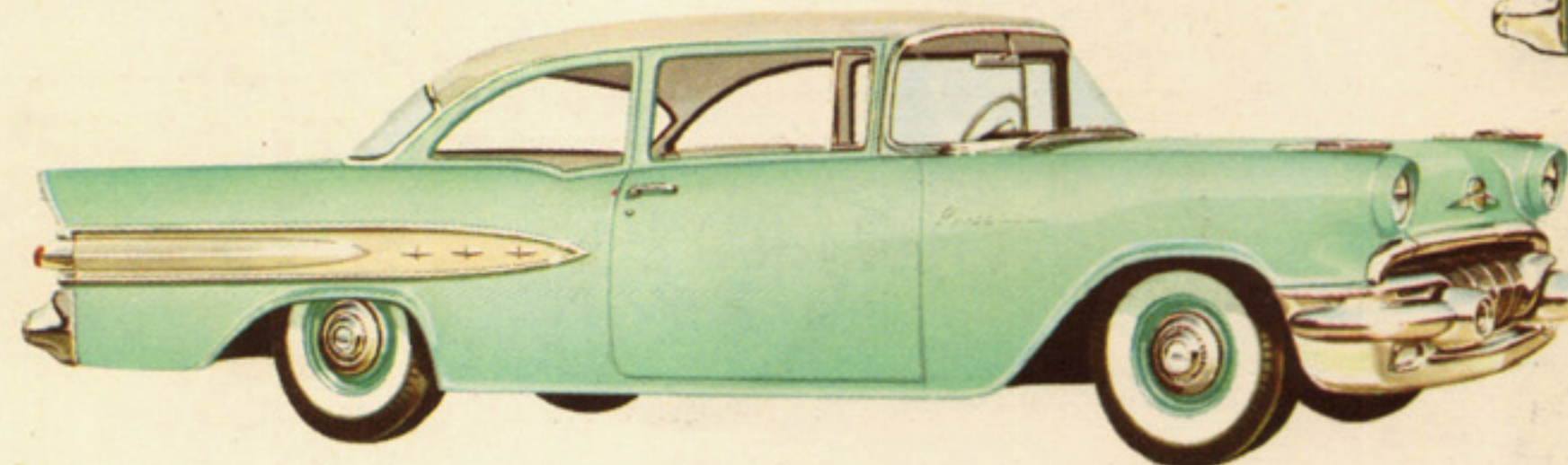
Pathfinder is the budget car of the Pontiac family—but what a beauty it is. Priced down to the lowest, but styled up with the finest. Refinements and touches of luxury you'd never expect to see on such a thrift-minded car. Stunning exterior styling in a wealth of solid colors and modern two-tone combinations. Brilliantly new from the massive grille to the road-hugging rear bumper. And—you get the benefit of Pontiac's flashing 1957 power and the great engineering features that have made the name so famous. But come see for yourself—drive it yourself—you'll be impressed with the power and beauty that's PONTIAC.



*Pontiac Pathfinder 2-Door Sedan*

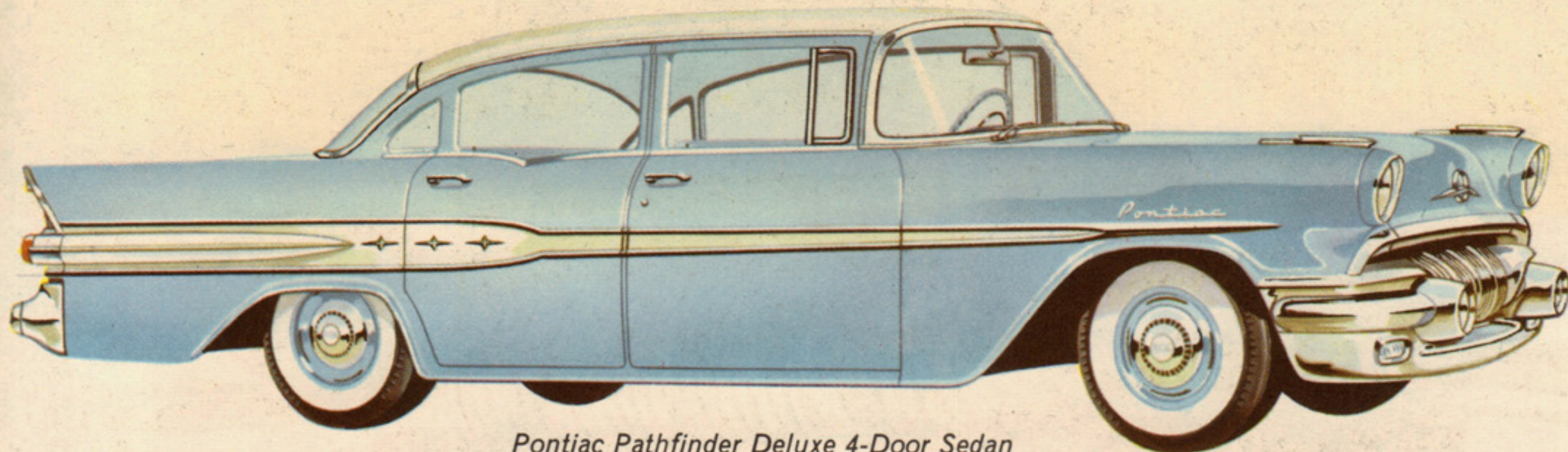


*Pontiac Pathfinder 2-Door Station Wagon*



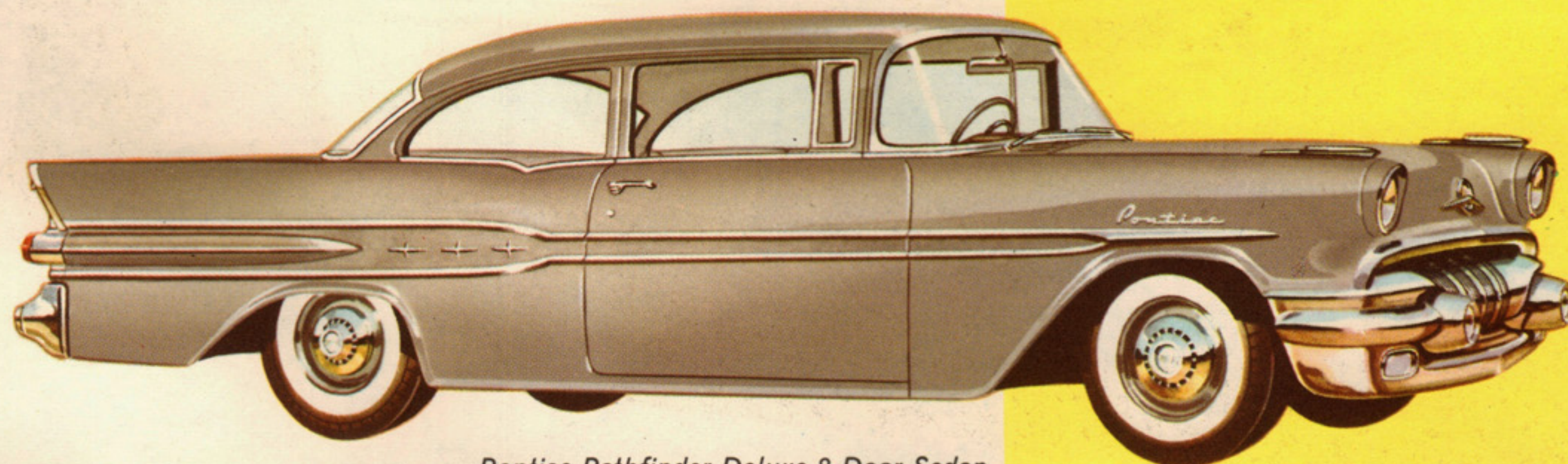
*Pontiac Pathfinder 2-Door Business Sedan*



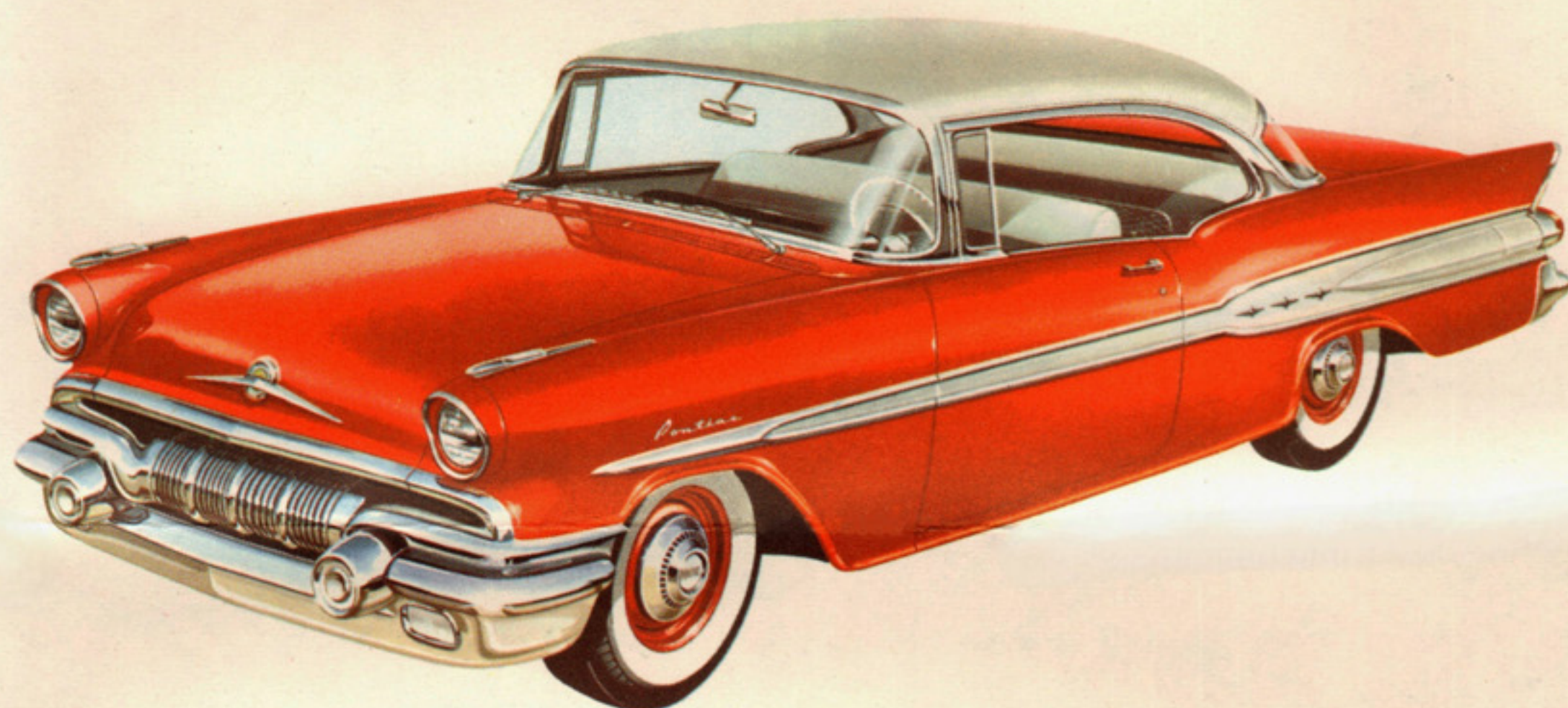


*Pontiac Pathfinder Deluxe 4-Door Sedan*

Pathfinder Deluxe—greatest choice of models in the entire 1957 Pontiac line. A car for every man and woman, for every family and pocketbook! Every one styled on low, road-hugging lines—longer, wider, roomier. All are aglow with fresh new colors in rich solids or in exciting new two-tone exterior combinations.



*Pontiac Pathfinder Deluxe 2-Door Sedan*



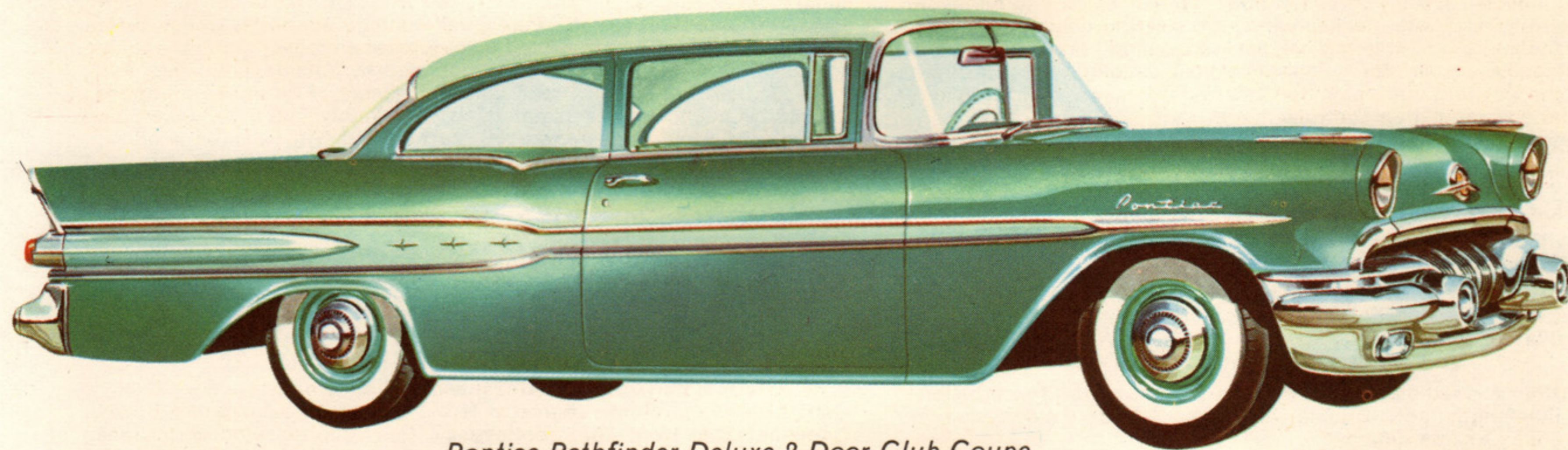
*Pontiac Pathfinder Deluxe 2-Door Sport Coupe*



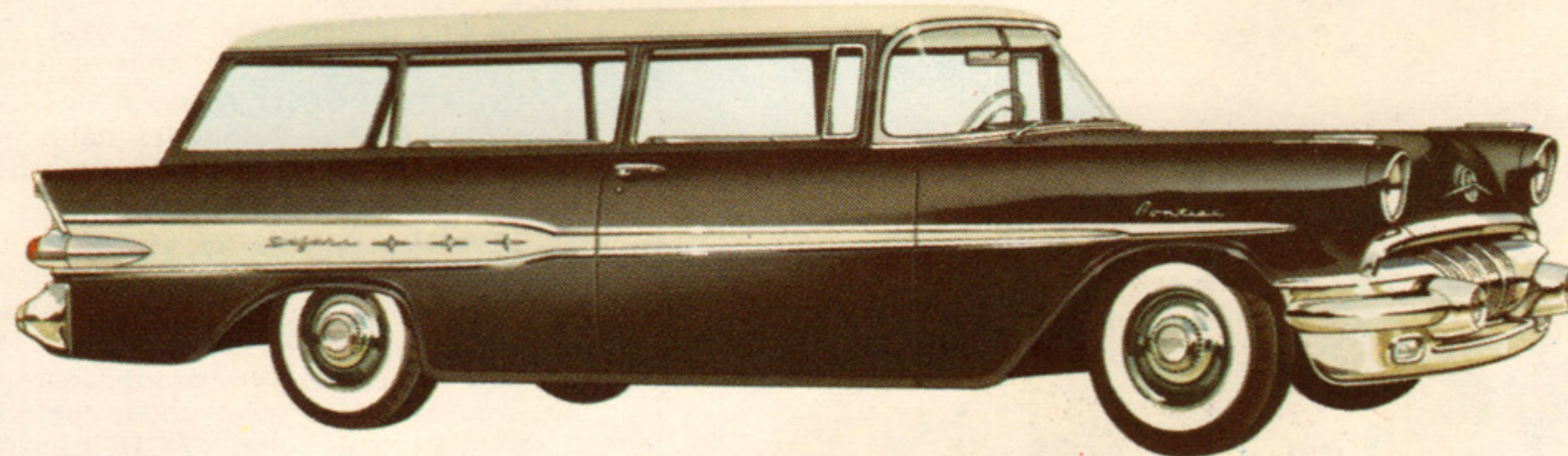
On the inside of the '57 Pathfinder Deluxe, too, there's exceptional new beauty in its high quality nylon fabrics and rich Vinyls . . . new comfort and convenience in arm-rests, front and rear; soft foam rubber front seat and dual sun visors! Discover for yourself how beautiful driving can be from the inside of a new Pontiac Pathfinder Deluxe!

# *The* 1957 PONTIAC STRATO-SIX ENGINE

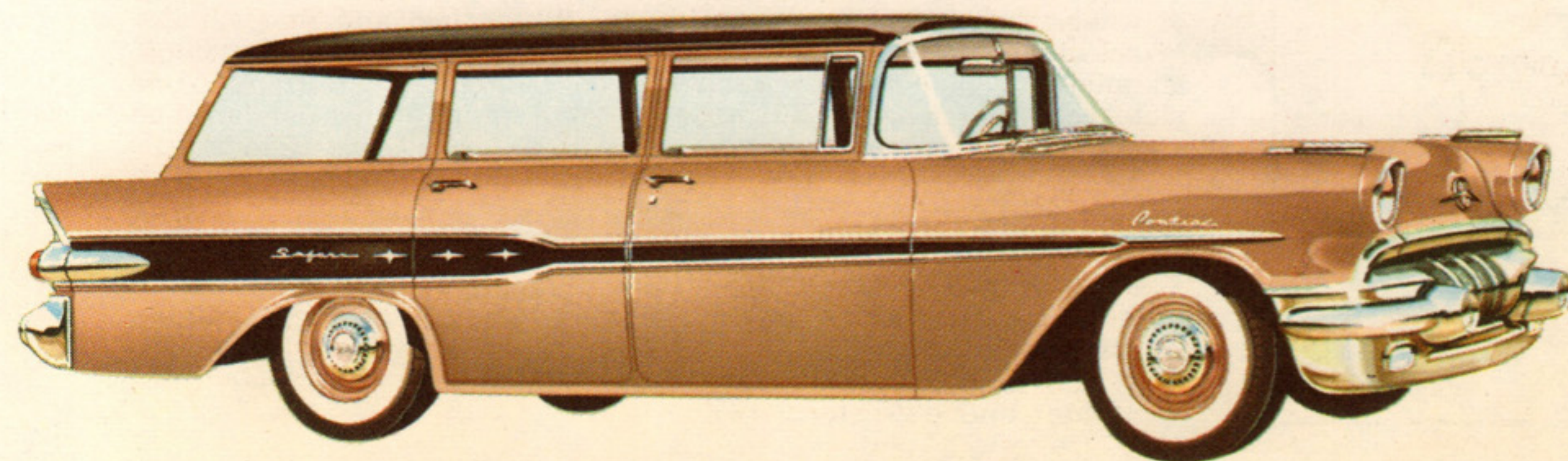




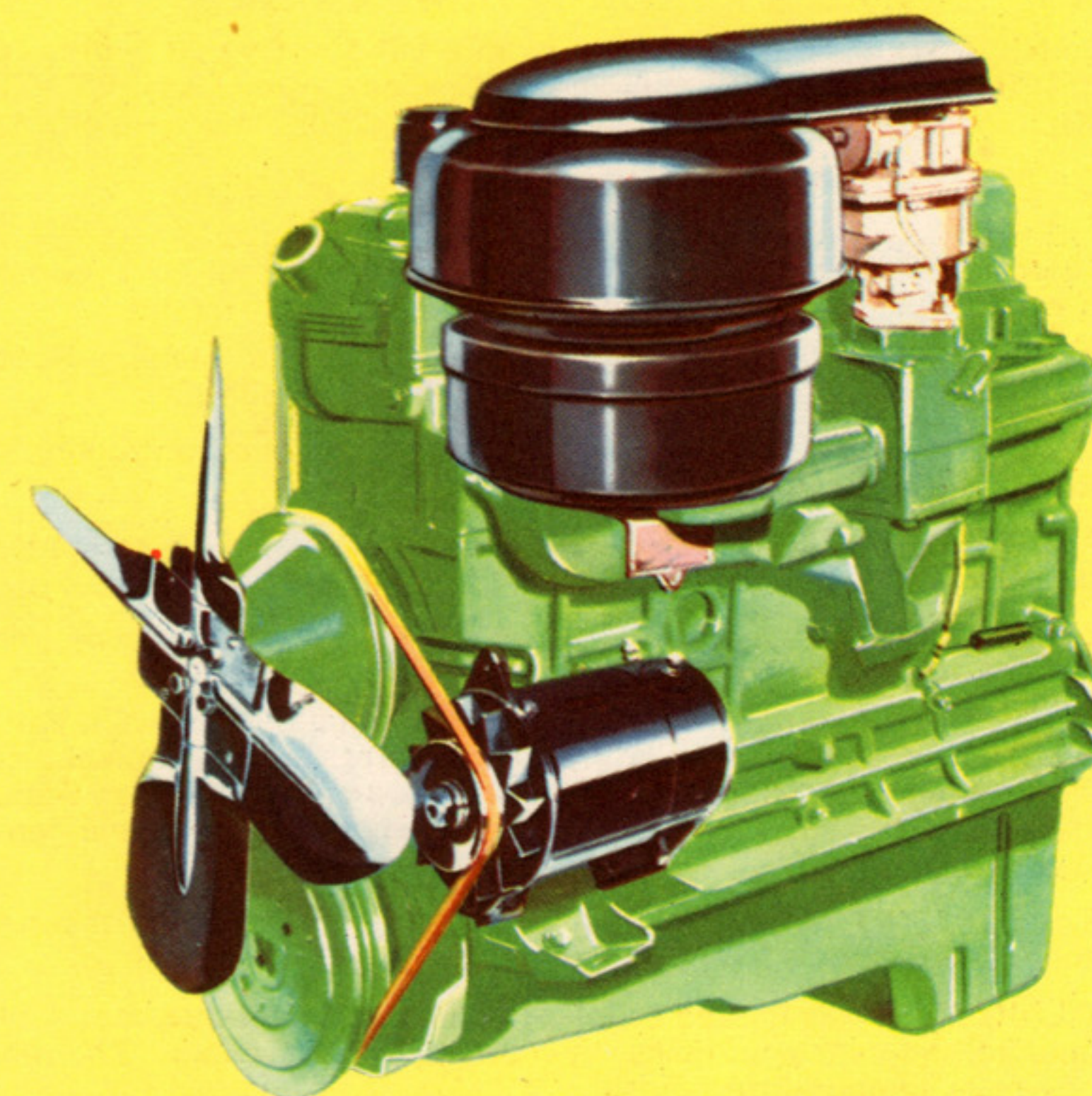
*Pontiac Pathfinder Deluxe 2-Door Club Coupe*



*Pontiac Pathfinder Deluxe 2-Door Station Wagon*

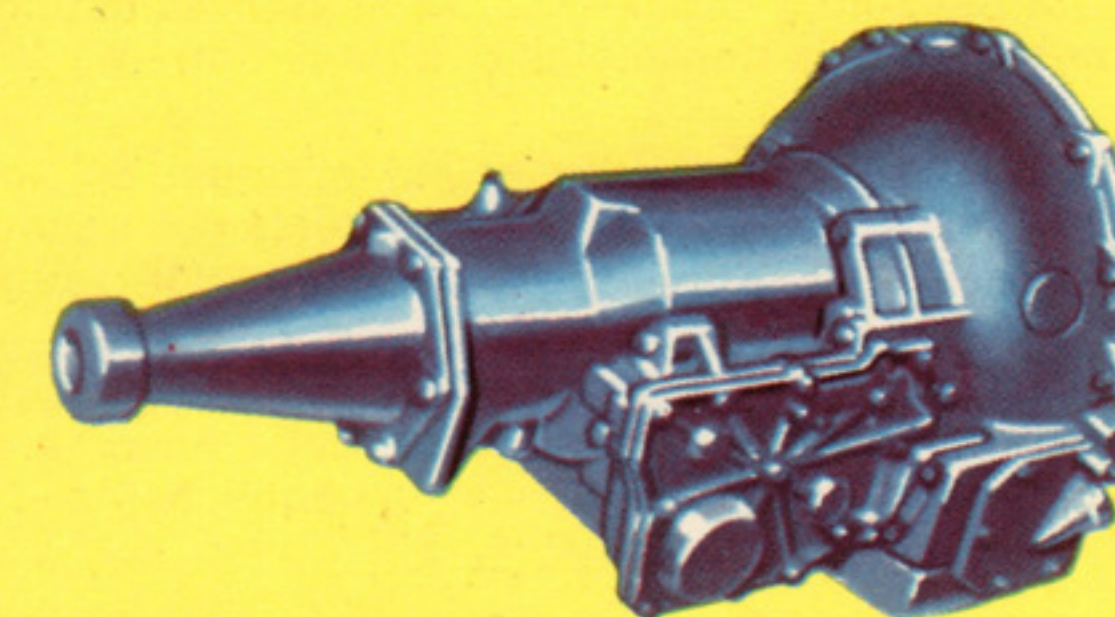


*Pontiac Pathfinder Deluxe 4-Door Station Wagon*



#### **STRATO-SIX 148**

This year, with its added refinements, this six-cylinder 148 h.p. engine with 8.25 to 1 compression ratio stands out as a winner! Synchro-mesh is standard equipment with this engine—and Powerglide transmission is an extra cost option. A "6" with a new high in power, responsiveness, economy.



**POWERGLIDE** for automatic get-away, safe pick-up for passing, breathtaking acceleration and silent, oil-smooth cruising. Optional at extra cost.

**SYNCHRO-MESH**—Standard driving at its thrifty best. Pontiac's famous smooth-shifting, 3-speed Synchro-mesh has been improved by refinements for even greater operating smoothness. Standard on all models.



# 1957 SPECIFICATIONS, PONTIAC SIX

## CAR EXTERIOR DIMENSIONS

**SEDANS AND COUPES:** Overall length, 201.6". Overall width, 74.0". Height: Sports models 59", Sedans 60.4", Convertible 58.9". **STATION WAGONS:** Overall length, 202.1". Overall width, 74.0". Height 60.6".

## POWER PLANT

**ENGINE:** 6-cylinder, valve-in-head "Strato-Six." 8.25 to 1 compression ratio, 148 H.P., 261 cu. in. displacement.

**CRANKSHAFT:** Precision-counterbalanced, forged steel. Rubber-floated harmonic balancer. High-lift alloy iron camshaft.

**PISTONS:** Tin-coated aluminum alloy, with expansion-controlling steel struts, offset pins, and three rings.

**BEARINGS:** Precision interchangeable insert type steel-backed, copper-nickel shell with lead-alloy lining—solid bearing surface.

**LUBRICATION:** Controlled full-pressure system. Fixed oil intake. Crankcase ventilator. Refill, 4 1/4 Imp. qts.

**FUEL SYSTEM:** Downdraft carburetion. Automatic choke. Oil-bath air cleaner. Thermostatic fuel mixture heat control. High-turbulence combustion chambers, 13 1/2 Imp. gallon tank (14 1/4 Imp. gal., station wagons) with self-cleaning filter screen. Fuel filler inside of left rear fender, concealed by door.

**EXHAUST SYSTEM:** 30" reverse-flow muffler with three resonance chambers. Special 24" muffler for Convertible.

**COOLING SYSTEM:** Ribbed cellular radiator with pressure cap. 4-blade fan and self-adjusting permanently lubricated water pump. Thermostat and by-pass temperature control.

**ELECTRICAL SYSTEM:** 12-volt system. 54-plate battery (60 ampere-hour rating at 20 hours) (36 month warranty). 30-ampere generator, with current and voltage regulators. Improved solenoid-operated positive-shift starter. All-weather ignition. Automatic centrifugal and vacuum spark control.

**MOUNTING:** Dynamically balanced on 4 large rubber cushions.

## SUSPENSION SYSTEM

**FRAME AND BUMPERS:** Deep drop box-girder frame (with special X-structure of I-beams in Convertible). Contoured wraparound bumpers with new bomb-shaped bumper guards.

**FRONT SUSPENSION:** Independent coil spring suspension, with coaxial life-sealed double-acting shock absorbers. Self-adjusting spherical-joint steering knuckles with non-metallic socket linings. Four lubrication fittings.

**REAR SUSPENSION:** Semi-elliptic leaf springs, 58" long by 2" wide. Lubrication-eliminating leaf inserts. Wide-stance mounting, with compression shackles. Diagonally mounted life-sealed double-acting shock absorbers.

**WHEELS AND TIRES:** Short-spoke steel disk wheels; 5" rims. Full wheel disks on Laurentian models; hub caps on others. 7.50-14, 4 ply extra-low-pressure tubeless tires. Wheelbase, 115". Front tread, 58". Rear tread, 58.8".

## CONTROLS

**BRAKES:** Hydraulic, self-energizing, with bonded linings. 11" dia. drums with heavy-gauge steel web and cast alloy iron rim on braking surfaces. Braking dive controlled by front suspension system. Mechanical actuation of rear brakes for parking.

**STEERING:** Recirculating ball-nut steering gear; ratio 20 to 1. Relay type linkage. Overall ratio, 25.7 to 1.

**DRIVING CONTROLS:** 18" two-spoke steering wheel with full circle horn ring on all models. Deeply recessed hub. Transmission and direction signal control levers, with mechanism inside steering column. Parking brake T-handle at left of steering column. Suspended brake and clutch pedals. Treadle accelerator. Foot-controlled headlight-beam switch. Light switch. Key-turn starter ignition lock and accessory switch. Windshield wiper and ventilation controls.

**INSTRUMENTS:** Speedometer. Fuel gauge. Heat indicator. Ammeter, oil pressure gauge, and country beam warning light. Direction signal arrows. Adjustable indirect instrument lighting. Lighted automatic transmission\* selector indicator on steering column.

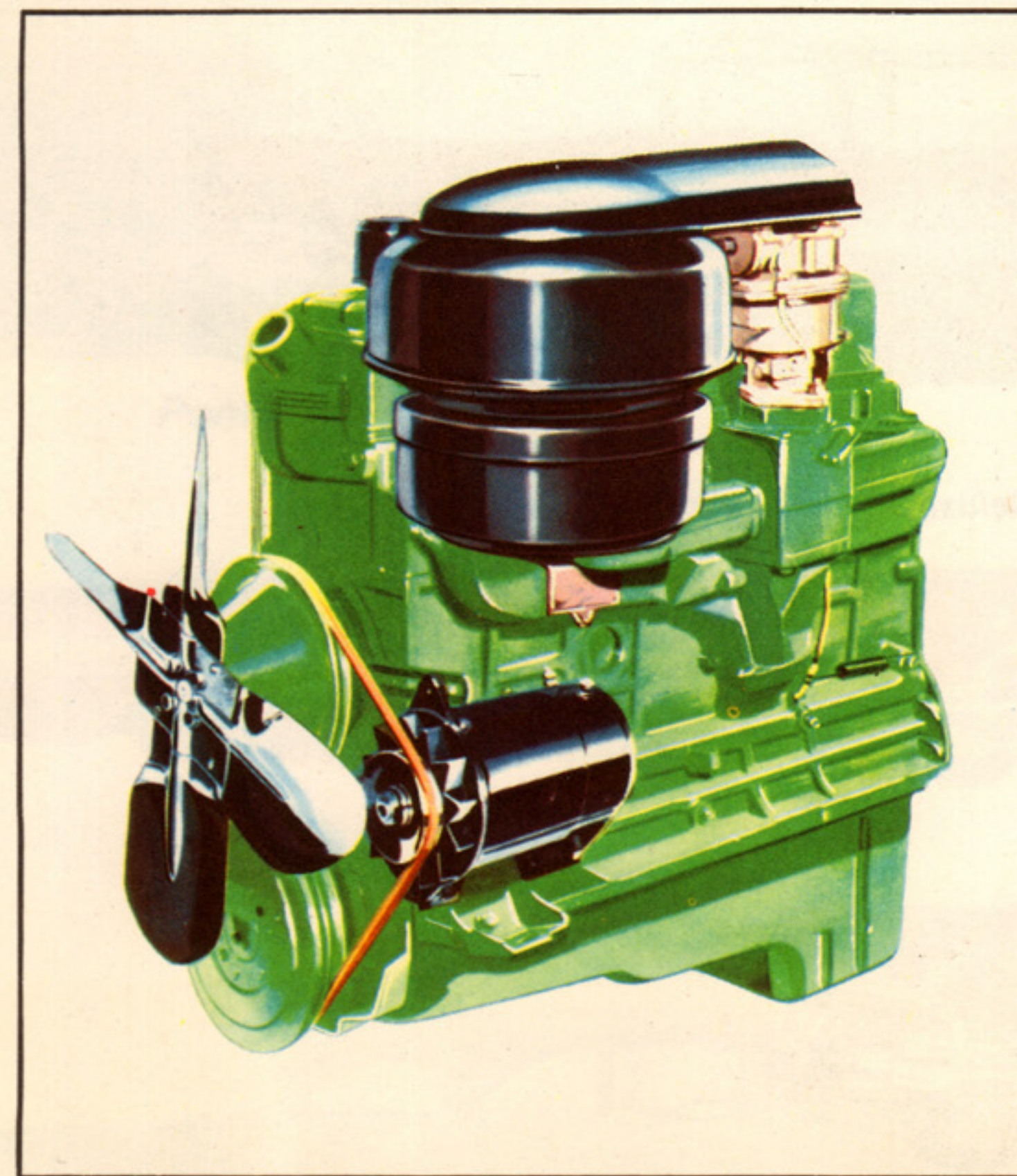
**VISION AIDS:** Two windshield wipers. Full-width defrosting. Inside mirror. Two sun shades (one, Pathfinder models).

**DRIVING LIGHTS:** Improved sealed beam headlights, protected by dual circuit breakers. Parking lights. Tail and stop light units. Dual rear license lights.

## BODY CONSTRUCTION

**STRUCTURE:** Welded steel. Turret top with central bow (except Convertible). Full-length floor. Double-walled cowl. Unitized sides and rear fenders. Dulux Enamel finish.

**CLOSURES:** Rear-opening double-walled doors: Concealed hinges; swing-out type front door hinges. Door checks. Rotary safety locks. Pushbutton outside handles; lever inside controls. Button-on-sill latches, with rear door safety adjustment. Aluminum sill plates. Two-panel



## BODY EQUIPMENT

**WINDOWS:** Safety glass in windshield and all windows. Windshield: One-piece wraparound; vertical pillars. Door windows: Crank-down. Crank-operated front door ventipanes. Rear quarter windows: Crank down (2-door sedans, coupes). Stationary (4-door sedans, Utility Sedan). Wraparound stationary (station wagons) with crank-down front sections (Pathfinder Deluxe 2-door model). Rear window: Wraparound (sedans, coupes except Convertible). Curved (station wagons).

**SEATS:** Full-width; all-steel frames with S-wire springs. Front seat: Solid back (4-door models); split centre-fold back (2-door models). Foam rubber front cushion (Laurentian and Pathfinder Deluxe models). Inclined-plane seat adjustment. Rear seat: Foam rubber cushion—Laurentian models. Folding seat (station wagons).

**UPHOLSTERY AND TRIM:** All vinyl (Convertible, Club Coupe, Pathfinder Deluxe and Pathfinder station wagons); combinations of pattern cloth and vinyl (others). Chrome front seat and side wall moldings (Laurentian models); windshield top and side molding (Convertible).

**FLOOR COVERINGS:** Carpet (Laurentian models and Pathfinder Deluxe Club Coupe). Vinyl-coated rubber mats (others), rubber mats in sedan and coupe trunk, Utility Sedan load space. Linoleum on platform, tail gate, and surface of folded rear seat (station wagons).

**APPOINTMENTS:** Wraparound instrument panel with instrument cluster in front of driver, radio grille, central glove compartment, (with light, Laurentian and Pathfinder Deluxe models), ash receptacle (one on Pathfinder Deluxe models, two on Laurentian models), cigarette lighter (Laurentian and Pathfinder Deluxe models) and electric clock (Laurentian models). Four arm rests (Laurentian and Pathfinder Deluxe models, except two in station wagons). Two rear compartment ash receptacles (Laurentian and Pathfinder Deluxe 2-door models; one, Laurentian and Pathfinder Deluxe 4-door sedans). Two assist straps (Laurentian and Pathfinder Deluxe 2-door sedans, Club Coupe). Package shelf (Sedans, Coupes, except Convertible).

**EXTERIOR CHROME:** Front fender ornaments, hood and rear deck emblems, radiator grille, bumpers, Venti-pane frames, handles, hub caps or wheel discs. Tail light assemblies. Windshield and rear window reveal moldings, all models (except convertible). Body side moldings, all models; Side window moldings on Laurentian. Chrome name plates on front fenders, all models. Safari script on rear fender of all station wagons except Pathfinder model.

## FACTORY-INSTALLED OPTIONAL EQUIPMENT

Powerglide automatic transmissions. Vacuum-power brakes with automatic transmission only. Hydraulic power steering. Electric windshield wipers. Tinted safety glass. \*\*Electric-power window lifts and Electric-power front seat adjustment. Whitewall tires. \*\*\*Heater and defroster. Radio.

The illustrations in this catalogue do not necessarily show standard colors, materials and equipment. The right is reserved to make changes at any time, without notice, in prices, colors, materials, equipment, specifications and also to discontinue models. This right may be exercised without incurring any responsibility with regard to cars previously sold.

In export territories, engine compression ratios are usually lower than for domestic use and items of optional equipment are not always available.