



C O N S U L

Z E P H Y R

Z O D I A C



The Zodiac

Heads will turn as you drive past, your heart will lift as you feel the smooth surge of power from the engine, your eyes will gleam as you admire the elegant colourful interior upholstery – yes, ownership of a New Consul, Zephyr or Zodiac is an exciting experience, an experience you will want to share when you learn of all the advanced styling, comfort, safety and performance features which make these three cars from Ford of Dagenham the best value for money in their class.



The Consul

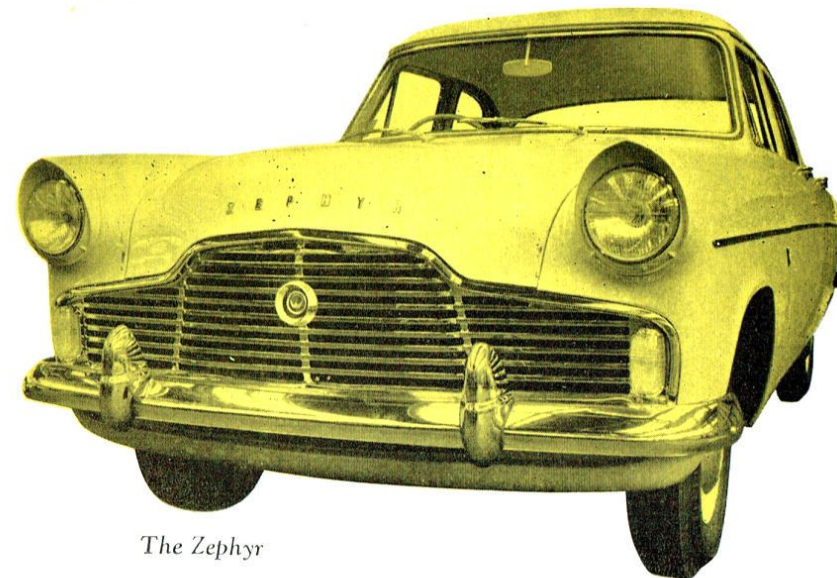
AN EXCITING NEW DRIVING EXPERIENCE

THE THREE GRACES

The Consul is powered by a four-cylinder overhead valve engine developing 61 brake horse-power, the Zephyr and Zodiac by a six-cylinder overhead valve engine giving 90 brake horse-power. All are four-door cars styled in the modern manner and giving the highest standards of comfort for a driver and up to five passengers. These cars are available in a wide range of sparkling body colours and matching upholstery.

World-wide Ford service is, of course, available to take good care of your Consul, Zephyr or Zodiac.

Ask your Dealer for a demonstration of one of these fine cars.



The Zephyr



The Consul

*Luxurious seats
are a feature of these three cars.
Here is the rear seat of the Consul
upholstered in Nylonweave and P.V.C. leathercloth.
One of many upholstery combinations available.
Door arm-rests are optional at extra cost.*



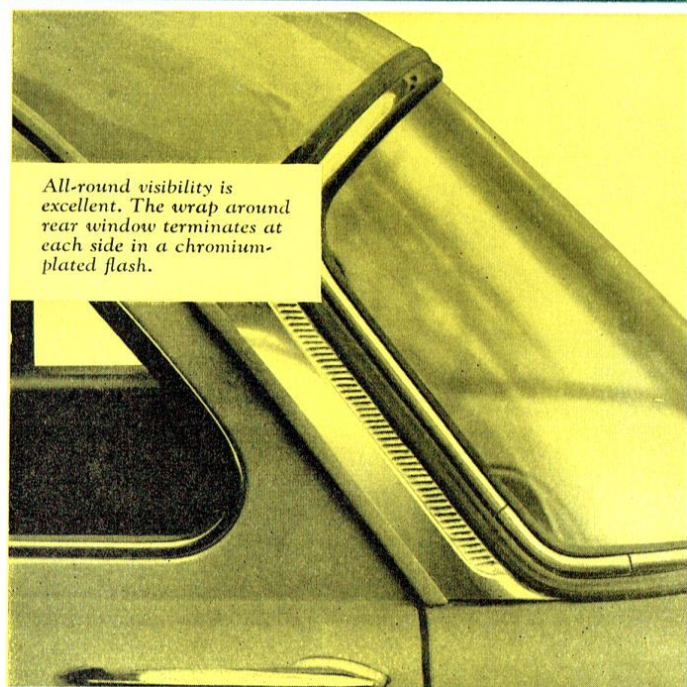
**TOP PERFORMANCE
AT LOWEST COST**

The four-door Consul with its 61 b.h.p. 1703 cc. overhead valve engine offers high performance without extravagance. Stronger body construction, large all-round expanse of safety glass, slender roof and refined door pillars and skilfully balanced weight distribution are the fruits of intensive research into building still safer and more beautiful cars at costs you can afford. All in all the Consul offers a combination of virtues which make it the undisputed leader in its class for value, running economy, comfort and safety.



*The easy-to-read instruments
of the Consul are grouped
in this neat binnacle
directly in front of the
driver.*

CONSUL

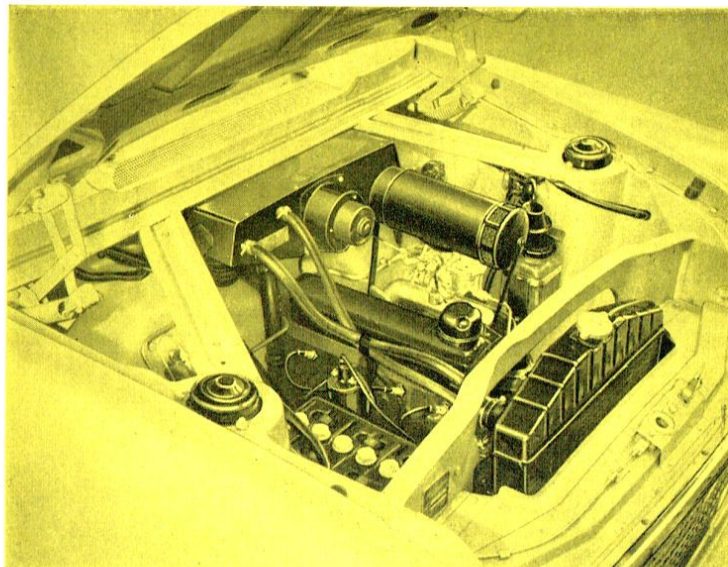


*All-round visibility is
excellent. The wrap around
rear window terminates at
each side in a chromium-
plated flash.*

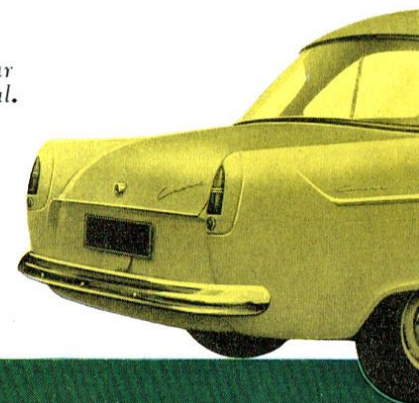


The Consul

Engine accessibility through the wide-opening counter-balanced hood is excellent. Battery, oil filler, dipstick, etc., all fall easily to hand.

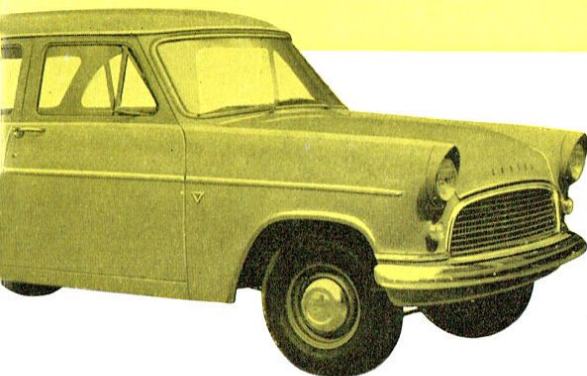


The graceful styling of the rear end of the Consul. The rear light assembly incorporates a red reflector, flashing amber turn signals and red tail and stop lights.

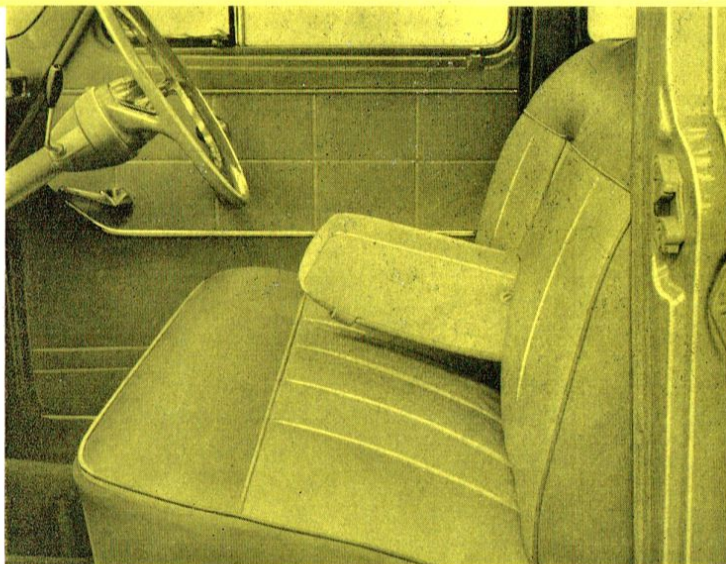


FEATURES FOR BETTER MOTORING

CONSUL



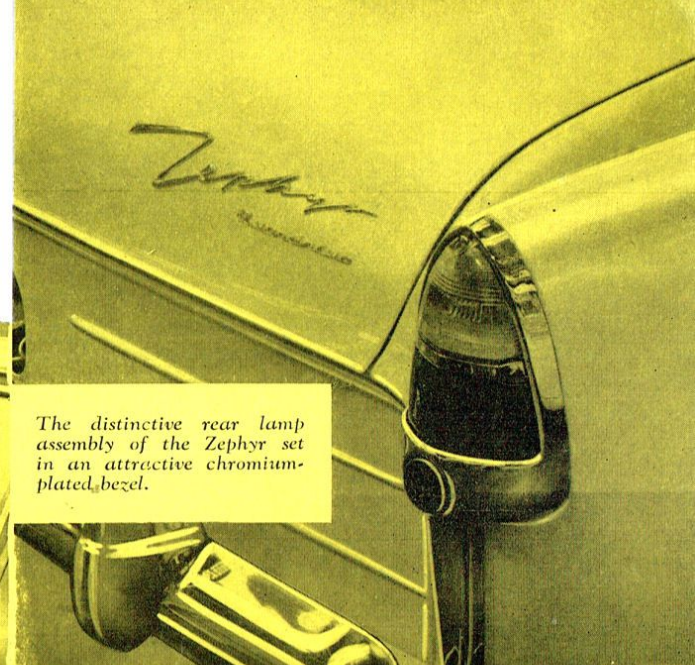
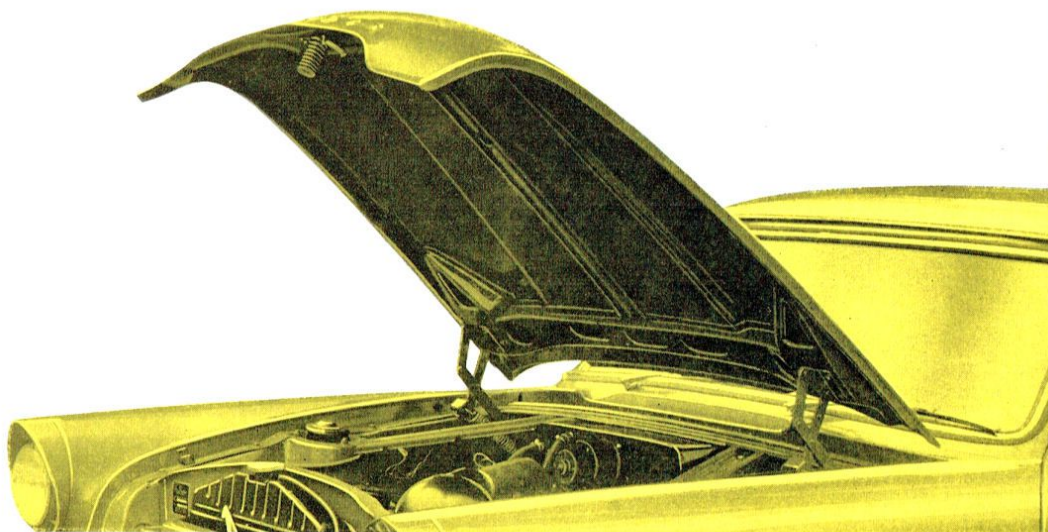
A styling feature is the modern treatment of the hooded headlights. Beneath these are separate parking lights which incorporate the front-turn signal lamps.



The full width front seat incorporates a retractable centre arm-rest (optional).



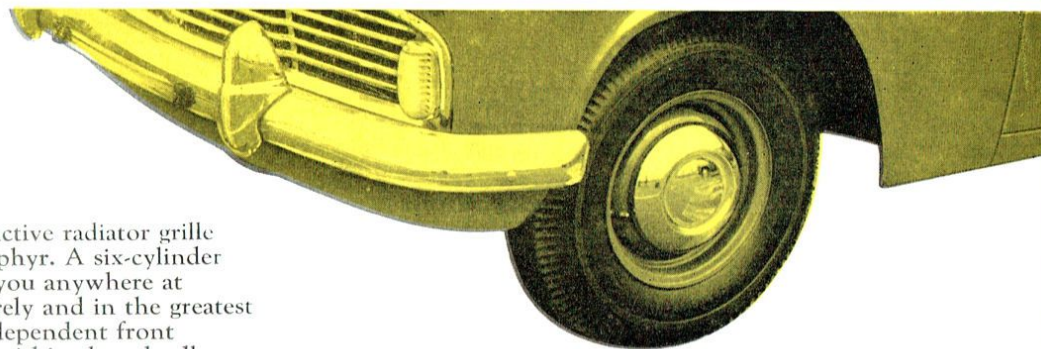
The Zephyr



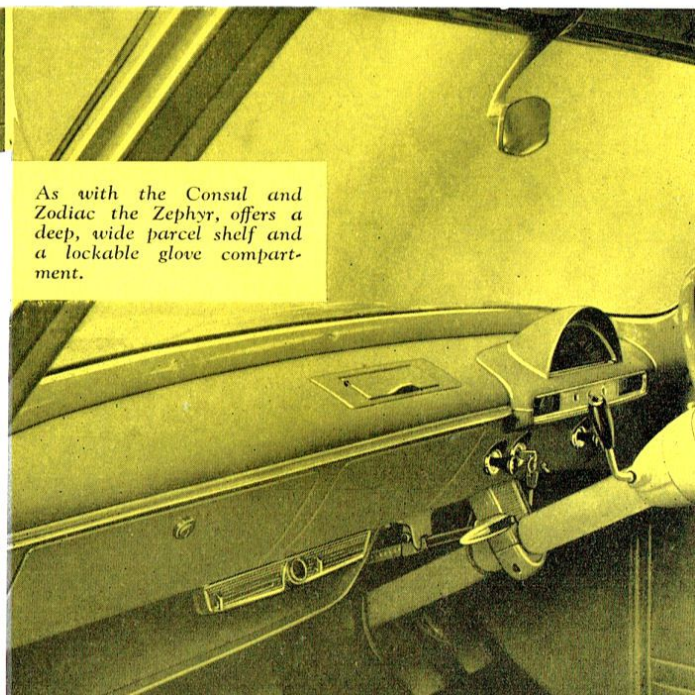
The distinctive rear lamp assembly of the Zephyr set in an attractive chromium-plated bezel.

WHISPERING SIX CYLINDER POWER

ZEPHYR



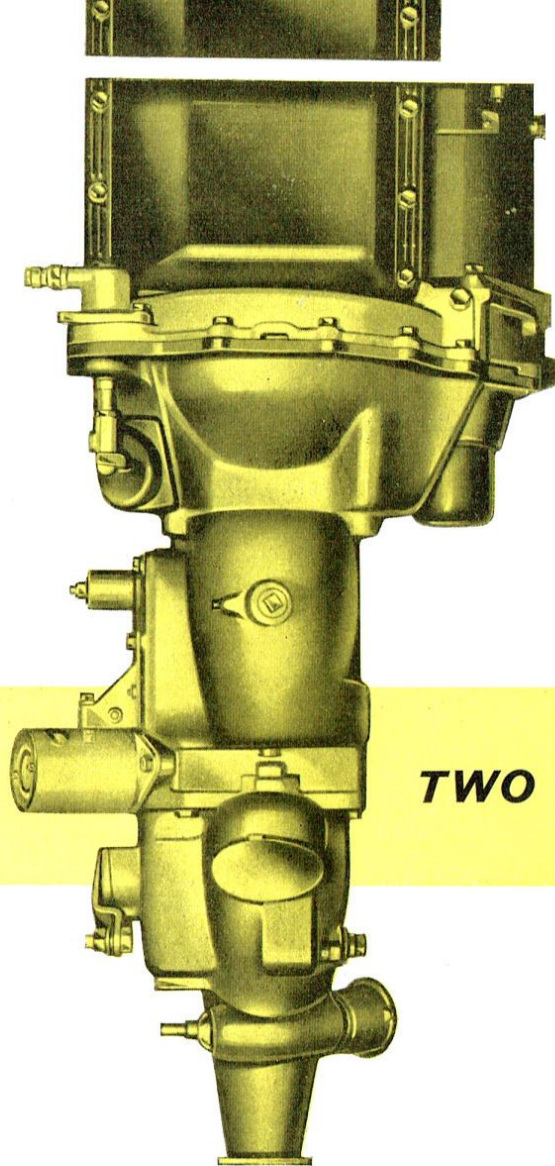
The beautiful and distinctive radiator grille marks this car as the Zephyr. A six-cylinder beauty which will take you anywhere at any time swiftly and surely and in the greatest comfort. 'Glide-ride' independent front suspension and seating within the wheelbase is part of the make-up of all three cars, ensuring a smooth ride over all kinds of terrain from rutted remote tracks to smoothed paved highways.



As with the Consul and Zodiac the Zephyr, offers a deep, wide parcel shelf and a lockable glove compartment.



The Zephyr



TWO PEDAL CONTROL

Fully automatic transmission is available as an option at extra cost on both the Zephyr and the Zodiac. This two-pedal control system relieves the driver of all responsibility for gear changing whilst on the move—just move the selector to one of the positions shown on the indicator, press the accelerator and automatic transmission does the rest.

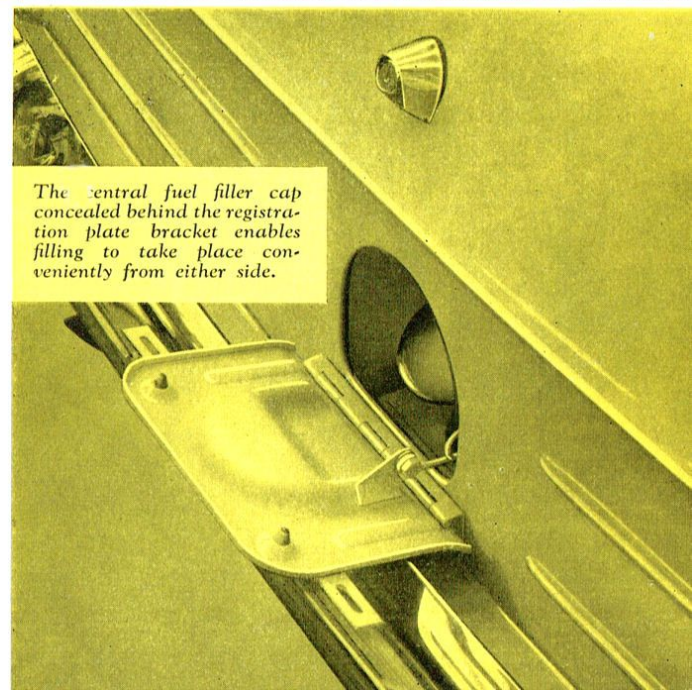
Basically the system consists of a hydraulic torque converter and two epicyclic gear sets in series; it gives three speeds forward; low, intermediate and high, as well as reverse. For the low gear the three units operate in series while for intermediate a multi-disc clutch locks up the front epicyclic gear set so that it rotates as a unit. The drive is then through the torque converter and the rear epicyclic set only. For high gear a single plate clutch couples the engine output direct to the gearbox output shaft thus giving a direct one to one ratio and by-passing both the torque converter and the gear system.

Overdrive is also available on cars equipped with conventional transmission.



All the 'Three Graces' have an 18 cu. ft. (0.6 M³) luggage compartment ready to swallow up all the cases you need for vacation trips.

Z E P H Y R

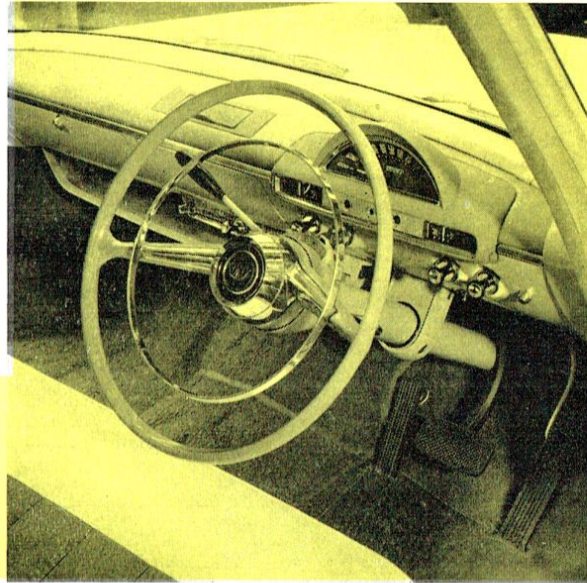


The central fuel filler cap concealed behind the registration plate bracket enables filling to take place conveniently from either side.



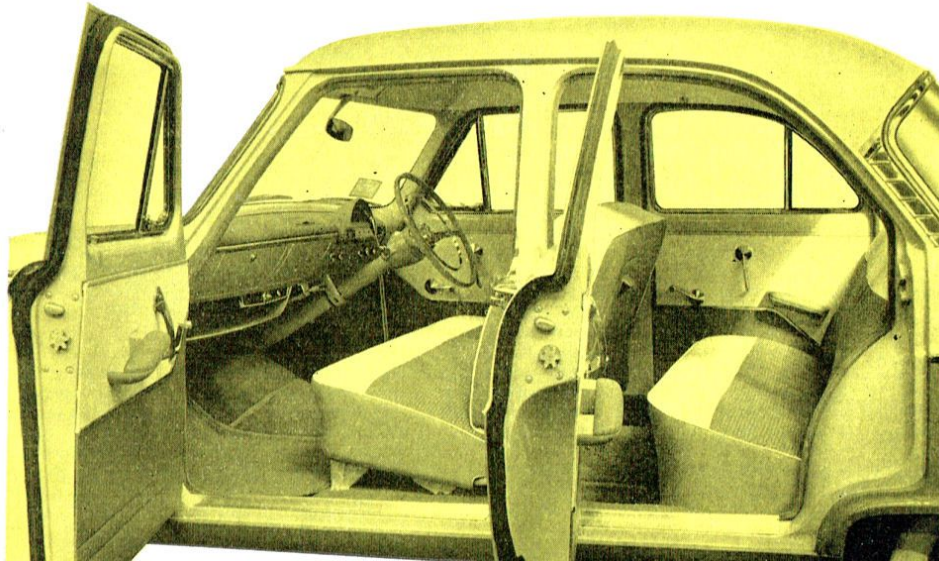
The Zodiac

The Zodiac steering wheel with its full circle horn-ring through which the neatly grouped instruments can be clearly seen.

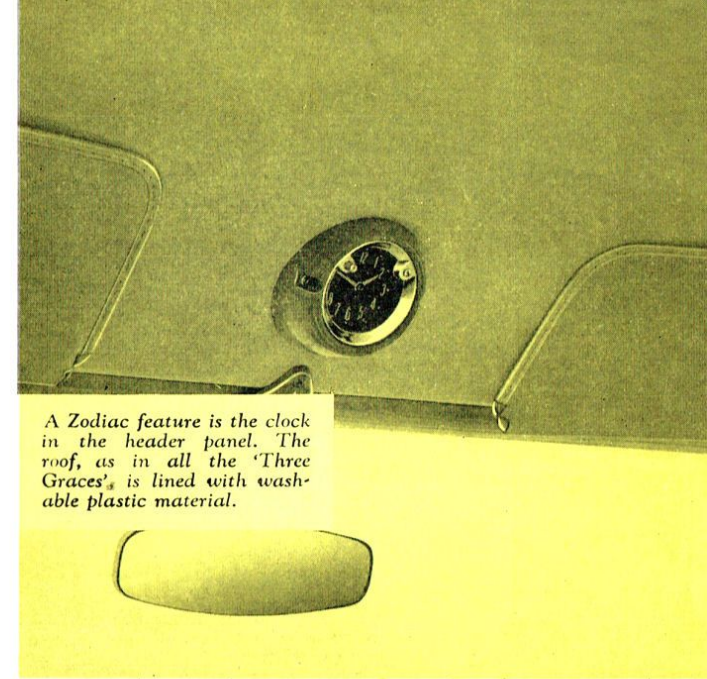


BEAUTY

The Zodiac is Ford of Dagenham's style leader in the medium car field. Classically graceful lines, beautiful two-tone body colour combinations with matching two-tone upholstery, distinctive exterior styling, white sidewall tyres plus comfort and convenience, features which include deep pile carpets, cigar lighter, clock, windscreen washers and coat hooks, all add up to the most comfortable, powerful and completely equipped car in its class.

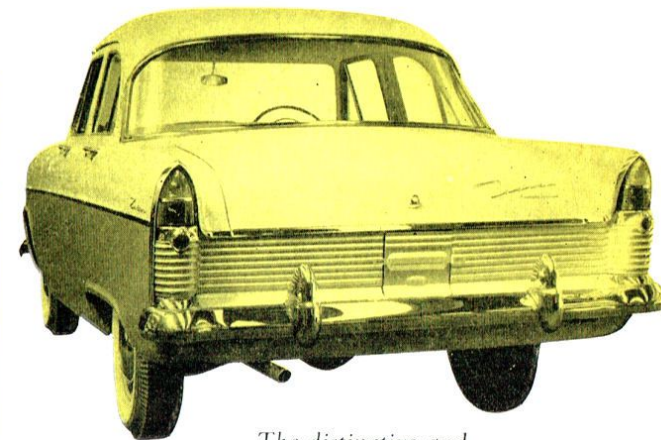


COMFORT



A Zodiac feature is the clock in the header panel. The roof, as in all the 'Three Graces', is lined with washable plastic material.

ZODIAC



The distinctive and attractive rear-end styling completes the superb lines of the Zodiac.

SPECIFICATIONS

ENGINE. 4-cylinder 1,703 cc. (103.9 cu. in.) capacity. Bore 3.25 in. (82.55 mm.). Stroke 3.13 in. (79.50 mm.). Overhead valves. Compression ratio 7.8 : 1 (6.9 : 1 optional). Maximum B.H.P. 61/59 @ 4,400 r.p.m. Maximum torque 93/89 @ 2,300 r.p.m.

LUBRICATION. Full pressure type to main camshaft and connecting rod-bearings. Gear drive oil pump. Full flow type oil filter fitted to cylinder block. Sump capacity 6 pints (3.41 litres).

COOLING SYSTEM. Water pump and thermostat. Two-blade fan (4-blade optional for hot climates). Capacity of system 18 pints (10.23 litres).

FUEL SYSTEM. Down-draught carburettor. Oil bath air cleaner. Mechanical diaphragm-type fuel pump. Fuel tank capacity 10.5 gallons (48.5 litres).

ELECTRICAL SYSTEM. 12-volt 45 amp./hr. battery (57 amp./hr. optional). Belt-driven voltage regulated generator. Oil-filled coil.

TRANSMISSION. Three-speed, synchromesh, helical gears manually operated by concentric gear-change lever on steering column. Overall ratio 1st 11.67 : 1, 2nd 6.75 : 1, 3rd 4.11 : 1. Reverse 15.86 : 1. Single dry-plate clutch, hydraulically operated and with permanently lubricated ball-bearing type throw-out bearing.

SUSPENSION. Built-in 'Glide-ride' independent front suspension. Directly operated coil springs mounted on hydraulic double acting shock absorbers, integral with the wheel spindle. Anti-roll torsion bar embodied.

Rear suspension by longitudinal asymmetric, semi-elliptic tapered end leaf springs.

BRAKES. Hydraulic-internal expanding on all four wheels. 9-in. (228.6 mm.) diameter drums. Total lining area 147 sq. in. (948.48 sq. cm.).

ENGINE. 6-cylinder 2,553 cc. (155.80 cu. in.) capacity. Bore 3.25 in. (82.55 mm.). Stroke 3.13 in. (79.50 mm.). Overhead valves. Compression ratio 7.8 : 1 (6.9 : 1 optional). Maximum B.H.P. 90/86 @ 4,400 r.p.m. Torque 137/132 @ 2,000 r.p.m.

LUBRICATION. Full-pressure type to main camshaft and connecting rod bearings. Gear-driven oil pump. Full-flow type oil filter fitted to cylinder block; sump capacity 7 pints (3.98 litres).

COOLING SYSTEM. Water-pump and thermostat. Two-blade fan (4-blade optional) for hot climates. Capacity of system 22 pints (12.5 litres).

FUEL SYSTEM. Down-draught carburettor. Oil bath air cleaner. Mechanical diaphragm type fuel pump. Fuel tank capacity 10.5 gallons (48.5 litres).

ELECTRICAL SYSTEM. 12-volt 45 amp./hr. battery (57 amp./hr. optional), belt-driven voltage regulated generator. Oil-filled coil.

TRANSMISSION. Three-speed, synchromesh, helical gears manually operated by concentric gear change lever on steering column. Overall ratios 1st 11.38 : 1, 2nd 6.40 : 1, 3rd 3.90 : 1, Reverse 15.06 : 1. Single dry-plate clutch, hydraulically operated and with permanently lubricated ball-bearing type throw-out bearings. Full automatic transmission or overdrive available at extra cost.

SUSPENSION. Built-in 'Glide-ride' independent front suspension, directly-operated coil springs mounted on hydraulic double-acting shock absorbers integral with the wheel spindle. Anti-roll torsion bar embodied. Rear suspension by longitudinal, asymmetric, semi-elliptic tapered-end leaf springs.

ENGINE. 6-cylinder 2,553 cc. (155.80 cu. in.) capacity. Bore 3.25 (82.55 mm.). Stroke 3.13 in. (79.50 mm.). Overhead valves. Compression ratio 7.8 : 1 (6.9 : 1 optional). Maximum B.H.P. 90/86 @ 4,400 r.p.m. Torque 137/132 @ 2,000 r.p.m.

LUBRICATION. Full pressure type to main, camshaft and connecting rod bearings. Gear-driven oil pump. Full-flow type oil filter fitted to cylinder block. Sump capacity 7 pints (3.98 litres).

COOLING SYSTEM. Water-pump and thermostat. Two-blade fan (4-blade optional for hot climates). Capacity of system 22 pints (12.5 litres).

FUEL SYSTEM. Down-draught carburettor. Oil bath air cleaner. Mechanical diaphragm type fuel pump. Fuel tank capacity 10.5 gallons (48.5 litres).

ELECTRICAL SYSTEM. 12-volt 45 amp./hr. battery (57 amp./hr. optional). Belt-driven voltage regulated generator. Oil-filled coil.

TRANSMISSION. Three-speed, synchromesh, helical gears manually operated by concentric gear-change lever on steering column. Overall ratios 1st 11.08 : 1, 2nd 6.40 : 1, 3rd 3.90 : 1, Reverse 15.06 : 1. Single dry-plate clutch, hydraulically operated and with permanently lubricated ball-bearing type throw-out bearings. Full automatic transmission or overdrive available at extra cost.

SUSPENSION. Built-in 'Glide-ride' independent front suspension, directly operated coil springs mounted on hydraulic double-acting shock absorbers integral with the wheel spindle. Anti-roll torsion bar embodied. Rear suspension by longitudinal, asymmetric, semi-elliptic tapered end leaf springs.

BRAKES. Hydraulic internal expanding on all four wheels. 9-in. (228.6 mm.) diameter drums. Total lining area 147.0 sq. in. (948.48 sq. cm.).

TYRES. 5.90 × 13 4-ply Black (Standard).

Optional at extra cost: 5.90 × 13 4-ply white sidewall; 5.90 × 13 6-ply black; 5.90 × 13 6-ply white sidewall.

Tubeless tyres are supplied unless tyres with tubes are specifically requested.

STEERING. Recirculatory ball-type steering. Two-spoke 17-in. (431.8 mm.) diameter steering wheel. Turning circle 35 ft. (10.67 m.).

INSTRUMENTS. The instruments are located in a shrouded binnacle styled into the dashboard. They are a speedometer, odometer, fuel gauge, ammeter (temperature gauge optional), ignition warning light, turn signal warning light and main beam indicator. The instruments are indirectly illuminated.

CONTROLS. The controls consist of choke control, combined ignition switch and starter, windshield wiper control, lighting control and panel illumination switch. Hood release handle is located under the dashboard.

EQUIPMENT. *Standard:* Two sun visors; door operated courtesy light with overriding manual switch; two ashtrays; button horn-press; oil bath air cleaner.

Optional at Extra Cost: Door-pull type arm-rests on all four doors; fuel tank locking cap; sump shield and fuel tank protectors; overrides; reinforced front and rear suspension; hood ornament; fire extinguisher; heater and demister; long and medium wave radio; short and medium wave radio; centre arm-rests front and/or rear.

DIMENSIONS AND WEIGHTS.

Overall length	172.15 in. (4.3 m.)	Overall height	61.50 in. (1.5 m.)
Overall width	68.62 in. (1.7 m.)	Wheelbase	104.50 in. (2.65 m.)

BRAKES. Hydraulic internal expanding on all four wheels. 9-in. (228.6 mm.) diameter drums. Total lining area 147.0 sq. in. (948.48 sq. cm.).

TYRES. *Standard:* 6.40 × 13 4-ply Black sidewall.

Optional at extra cost: 6.40 × 13 6-ply black sidewall; 6.40 × 13 4-ply white sidewall; 6.40 × 13 6-ply white sidewall; 6.70 × 13 4-ply or 6-ply black or white sidewall. (6.70 × 16 6-ply black standard when automatic transmission supplied.)

STEERING. Recirculatory ball-type steering. Two-spoke 17-in. (431.8 mm.) diameter steering wheel. Turning circle 36 ft. (10.97 m.).

INSTRUMENTS. The instruments are located in a shrouded binnacle faired into the dashboard. They are a speedometer, odometer, fuel gauge, ammeter (temperature gauge optional), ignition warning light, turn signal warning light and main beam indicator. The instruments are indirectly illuminated.

CONTROLS. The controls consist of a choke control, combined ignition switch and starter, windshield wiper control, lighting control and panel illumination switch. Hood release and overdrive control (when fitted) are located below the dashboard close to the steering column.

EQUIPMENT. *Standard:* Two sun visors; door-operated courtesy light with overriding manual switch; two ashtrays; full horn-ring press; oil bath air cleaner; door-pull type arm-rests and front seat centre arm-rest; overrides.

Optional at extra cost: Automatic transmission; overdrive; fuel tank locking cap; sump shield and fuel tank protector; reinforced front and rear suspension; hood ornament; heater and demister; long and medium wave radio; short and medium wave radio; centre arm-rest rear seat.

TYRES. *Standard:* 6.40 × 13 4-ply white sidewall.

Optional at extra cost: 6.40 × 13 6-ply white sidewall; 6.70 × 13 4-ply or 6-ply white sidewall. (6.70 × 13 4-ply white sidewall standard when automatic transmission supplied.)

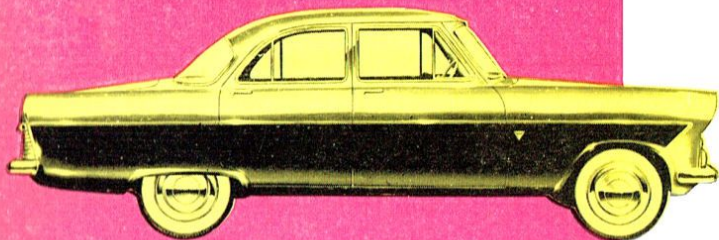
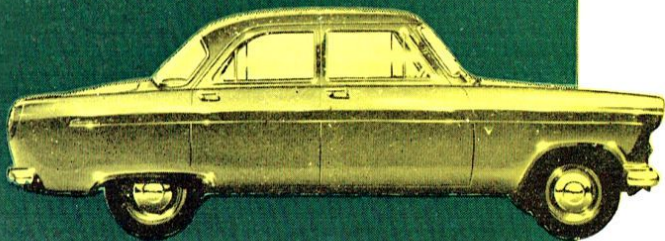
STEERING. Recirculatory ball-type steering. Two-spoke 17-in. (431.8 mm.) diameter steering wheel. Turning circle 36 ft. (10.97 m.).

INSTRUMENTS. The instruments are located in a shrouded binnacle faired into the dashboard. They are a speedometer, odometer, fuel gauge, ammeter (temperature gauge optional), ignition warning light, turn signal warning light, and main beam indicator. The instruments are indirectly illuminated.

CONTROLS. The controls consist of a choke control, combined ignition switch and starter, windshield wiper control, lighting control and panel illumination switch. Hood release and overdrive control (when fitted) are located below the dashboard close to the steering column.

EQUIPMENT. *Standard:* Electric clock; windshield washer; cigar lighter; chrome wheel rim embellishers; white sidewall tyres; two-tone body colour and upholstery; door-operated courtesy light with manual overriding switch; two ashtrays; oil bath air cleaner; door-pull type arm-rests and front seat centre arm-rest; overrides; coat hooks.

Optional at extra cost: Automatic transmission; sump shield and fuel tank protector; reinforced front and rear suspension; hood ornament; fire extinguisher; overdrive; heater and demister; short and medium wave radio; long and medium wave radio; fuel tank locking cap; centre arm-rest rear seat.



COLOURS

Ask your Dealer to show you the sparkling new colours for the Consul, Zephyr or Zodiac. Solid body colours on the Consul and Zephyr and two tones on the Zodiac are matched by a well-chosen range of upholstery materials which include P.V.C. leathercloth, real leather or nylon-weave. You can choose a combination of colour and upholstery to suit your individual taste.

SERVICE

The interest of Ford of Dagenham in their products does not cease when the sale is made.

Service for all their products including the Consul, Zephyr and Zodiac, is available throughout the world – through Ford Dealers.

