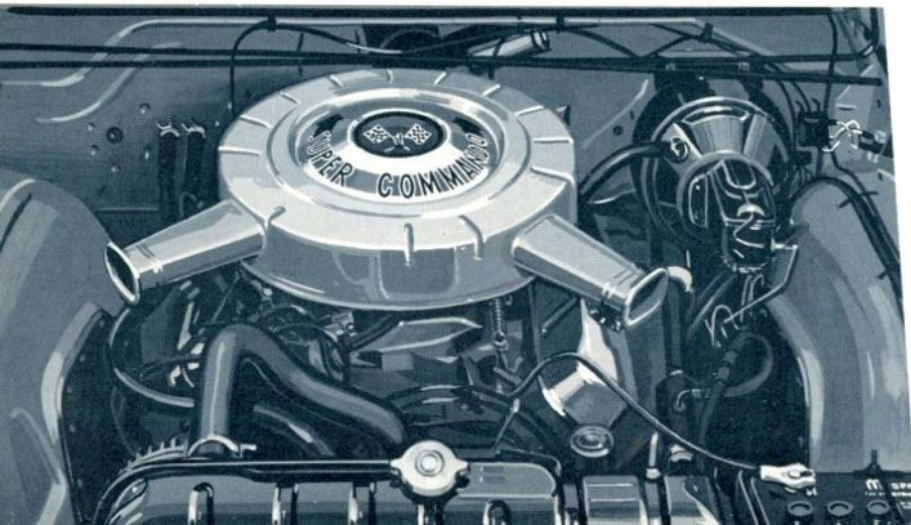


# '67 Plymouth Police Cars





# FURY PURSUIT



## The Fury Pursuit didn't get its name on looks alone.

It's the difference between just getting there. And getting there fast.

Five potent V-8s do the job. The smallest is 318 cu. in. big and runs on regular gas.

The biggest? An optional (at extra cost) 440 cu. in. V-8 shown at the left.

It's complete with 4-bbl. carb. Dual exhausts. When the word gets out on this performer, would-be speeders will think twice.

Every Pursuit is equipped with a special high-speed handling package. It includes an anti-sway bar. Heavy-duty

ball joint suspension. Torsion bars and rear leaf springs. And heavy-duty shocks. Together, they help keep the Pursuit level and responsive. Even at speeds over 100 mph.

The Fury Pursuit is available in either a 2-door or 4-door model.



# FURY PATROLLER



## The Fury Patroller thrives on long hours. And then comes back for more.

Patrolling any city is a punishing task. For both man and machine. A Fury Patroller makes the job easier. And more efficient.

Front and rear seats are reinforced with heavy-duty springs. Covered with thick foam padding. Up

front, there's over 41 inches of leg room to keep even your "six-footers" comfortable.

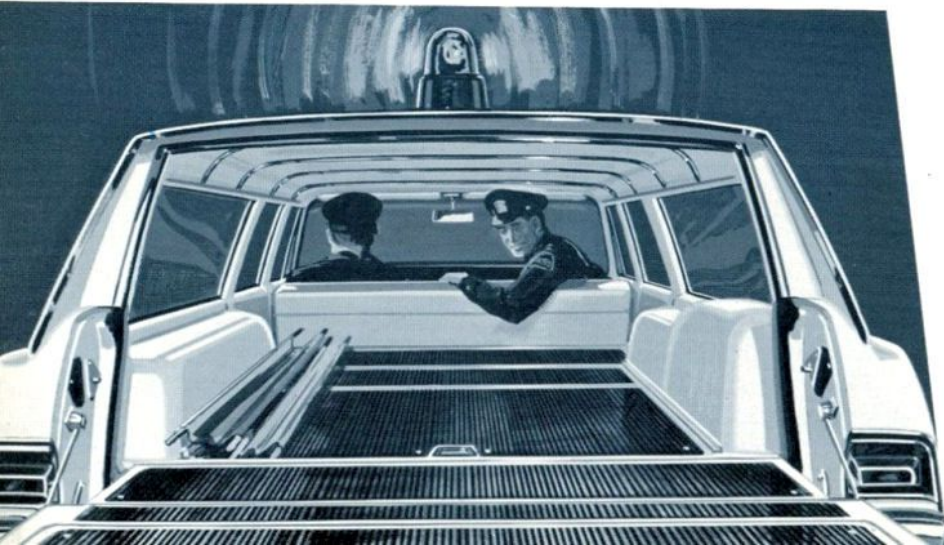
Day in. Day out. Fury's 119 in. wheelbase and torsion-bar suspension take on potholes and bumps without incurring a long list of needless repair

bills. And they absorb bumps like a sponge. Important to the men who spend all day inside.

Comfort. Dependability. That's the Fury Patroller. Available as a 2-door or a 4-door.



# FURY EMERGENCY WAGON



## You can't predict emergencies. Be ready. With a Fury Emergency Wagon.

It puts time on your side when an accident requires police assistance.

How? With the back seat in place, it performs as a regular patrol car. That puts a policeman nearer the scene.

Then with the back seat folded down, it quickly

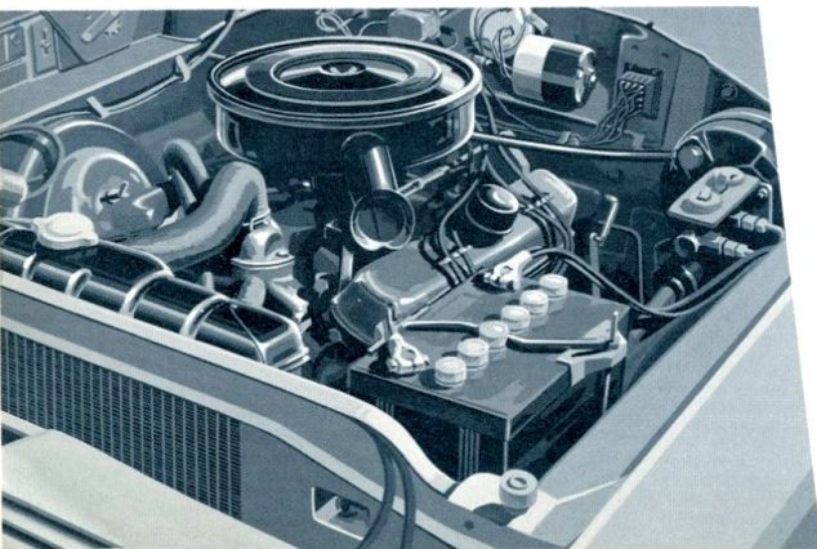
converts into an ambulance. With plenty of room—almost 8 ft. (over 10½ ft. with tail gate open)—for stretchers, oxygen tanks and other emergency equipment.

Your policemen can't predict emergencies. But they can anticipate

them and be prepared to act quickly. With a Fury Emergency Wagon on the force.



# BELVEDERE PURSUIT



## A fast take-off in a Belvedere Pursuit can save a few seconds. And perhaps another life.

That's reason enough for adding it to your force.

Here's another. Value. Your low initial cost includes a 318 cu. in. V-8 (illustrated at the left). A special suspension package that includes an anti-sway bar. Heavy-duty ball joints. Torsion

bars and heavy-duty rear leaf springs. And heavy-duty front and rear shocks. Together, they'll help keep the Pursuit on an even keel during high-speed chases.

If you want to squeeze extra mileage out of your police fleet dollar,

add a Belvedere Pursuit. Available in 2- and 4-door models.



# BELVEDERE PATROLLER



## The Belvedere Patroller. A hard worker with a small appetite.

It's built to prowl your town 24 hours a day. Always eager. Ready for action.

Standard equipment includes a 225 cu. in. "6" that thrives on long hours and little fuel.

Comfort is also standard in the Patroller. Front and rear seats are

reinforced with heavy-duty springs. Covered with thick foam padding.

A 116 in. wheelbase and heavy-duty torsion-bar suspension make road irregularities seem almost non-existent.

Add everything up and you'll find our Belvedere

Patroller hard to beat. It's a car that never forgets who pays the bills. And spends a lot of time proving it.





# BELVEDERE EMERGENCY WAGON



## We'll give you two cars for the price of one. The Belvedere Emergency Wagon.

It's both a patrol car and ambulance—all in one!

With the back seat up, you have an all-around, dependable police car. It sits on a brawny 117 in. wheelbase. One tough enough to withstand rugged patrolling.

Back seat down, and

there's enough room in the rear—almost 8 ft. (over 10 ft. with tail gate open)—for two emergency stretchers and first-aid equipment.

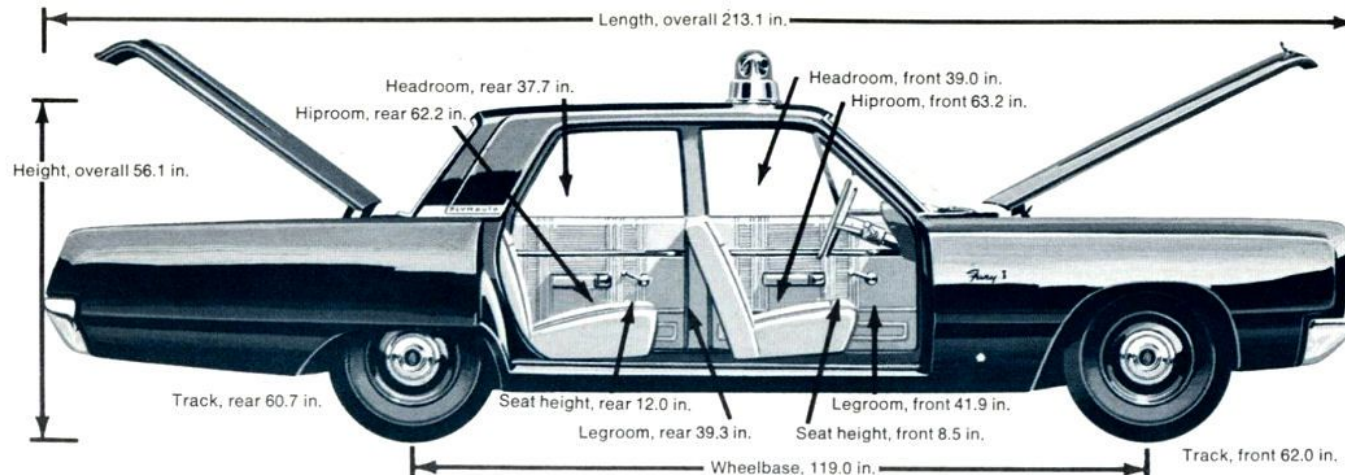
When you're building your police fleet, make sure to include a Belvedere Emergency Wagon. It's

a car that performs double duty—without doubling your costs.





# FURY



## Our master plan for law enforcement.

### Body dimensions for Fury Emergency Wagon

Overall length	216.0 in.
Overall width	78.0 in.
Overall height	57.8 in.
Wheelbase	121.0 in.
Floor length, tail gate open, 2nd and 3rd seats folded	128.9 in.
Floor length, tail gate closed, 2nd and 3rd seats folded	95.7 in.
Floor length, tail gate open, 2nd seat up, 3rd seat folded	91.7 in.
Floor length, tail gate closed, 2nd seat up, 3rd seat folded	58.5 in.
Width between rear wheel housings	44.9 in.
Height of rear opening	29.5 in.
Width of rear opening at floor	55.0 in.

### Specifications:

#### STANDARD EQUIPMENT ON ALL PLYMOUTH FURY POLICE SPECIALS:

**CHASSIS:** Oil filter: replaceable element type (not available with 383 or 440 cu. in. engines. Heavy-duty clutch—11 in. on 6-cylinder engine, 10½ in. on 8-cylinder engine. Heavy-duty manual transmission, 3-speed column shift (N.A. with 440 cu. in. V-8 engines). Suspension: special handling package—8 cylinder sedans only—a specially designed and engineered suspension for pursuit-type work. Contains the following heavy-duty components matched for high-speed handling: Anti-sway bar, torsion bars, extra-heavy duty rear leaf springs and heavy-duty front and rear shock absorbers. Heavy-duty suspension, all wagons and 6-cylinder sedans, includes: Torsion bars, heavy-duty rear leaf springs, and heavy-duty front and rear shock absorbers. Anti-sway bar is standard on wagons, special equipment on 6-cylinder sedans. Heavy-duty police brakes: 11 x 3 front, 11 x 3 rear. Manually adjusting.

Tires: blackwall tubeless. Fury sedan, 7.75 x 14 (8.25 x 14 with 383 or 440 cu. in. V-8 engines); Fury wagon, 8.55 x 14. Extra-width wheels, 14 x 6JK. High-capacity radiator standard with 383 and 440 cu. in. engines. Fan shroud standard on 8-cylinder models. Dual master brake cylinder. Energy-absorbing steering column.

**ELECTRICAL**—60 amp ammeter. 46 amp high capacity Chrysler alternator. Electrical safety link in charging circuit. Dual horns. Speedometer, certified calibrated. Back-up lights. Dual windshield wipers. 2-speed windshield washer. Heavy-duty stop light switch. Fresh air heater with defrosters. 70 amp hr. battery with heat shield. Parking-brake warning light. Roadside warning flashers.

**BODY TRIM**—2 and 4-door sedans—heavy-duty tan cloth-and-vinyl (standard Fury I color trims, available at no extra cost). Wagons: all-vinyl trim design and color same as on Fury I wagons. Heavy-duty seat and seat-back springs, front seat only on wagons. Front seat-back surface supported by hardboard backing. Foam seat cushion, front and rear. Heavy-duty floor mats, black rubber, front and rear. Armrests, front and rear. Ashtrays, front and rear. Padded sun visors, right and left. Full circle horn ring. Padded instrument panel. Mirror, outside left, door-mounted; manual, outside right (wagons only). Seat belts: 2 front (retractable) and 2 rear (non-retractable). Roof reinforcement plate for roof-mounted light or siren.

#### ENGINE AVAILABILITIES:

225 cu. in. 6-cylinder engine—standard on the Fury Patrolter. Inclined 30 degrees to the right. Horsepower, 145 at 4000 rpm. Torque, 215 lbs.-ft. at 2400 rpm. Compression ratio, 8.4 to 1. Bore, 3.40 in. Stroke, 4.125 in. Single-throat downdraft carburetor. Single exhaust. Coolant capacity, with heater, 14 qts. Special chrome-plated top piston rings and special oil pressure control valve for police service.  
318 cu. in. V-8 engine—standard on Fury Pursuit. Horsepower, 230 at 4400 rpm. Torque, 340 lbs.-ft. at 2400 rpm. Compression ratio, 9.0 to 1. Bore, 3.91 in. Stroke, 3.31 in. 2-bbl.

downdraft carburetor. Coolant capacity, with heater, 19 qts. Single exhaust.

383 cu. in. Commando 2-bbl. V-8 engine—optional engine package. Horsepower, 270 at 4400 rpm. Torque, 390 lbs.-ft. at 2800 rpm. Compression ratio, 9.2 to 1. Bore, 4.25 in. Stroke, 3.38 in. Single 2-bbl. carburetor. Single exhaust. Coolant capacity, with heater, 18 qts. Uses regular fuel.

383 cu. in. Commando 4-bbl. V-8 engine—optional package. Horsepower, 325 at 4800 rpm. Torque, 425 lbs.-ft. at 2800 rpm. Compression ratio, 10.0 to 1. Bore, 4.25 in. Stroke, 3.38 in. Single 4-bbl. carburetor. Dual exhaust. Coolant capacity, with heater, 18 qts.

440 cu. in. Commando 4-bbl. V-8 engine—optional package. Horsepower, 350 at 4400 rpm. Torque, 480 lbs.-ft. at 2800 rpm. Compression ratio, 10.1 to 1. Bore, 4.32 in. Stroke, 3.75 in. Single 4-bbl. carburetor. Dual exhausts. Twin snorkels. Coolant capacity, with heater, 18 qts. (Available with special high-speed shift TorqueFlite automatic transmission only.)

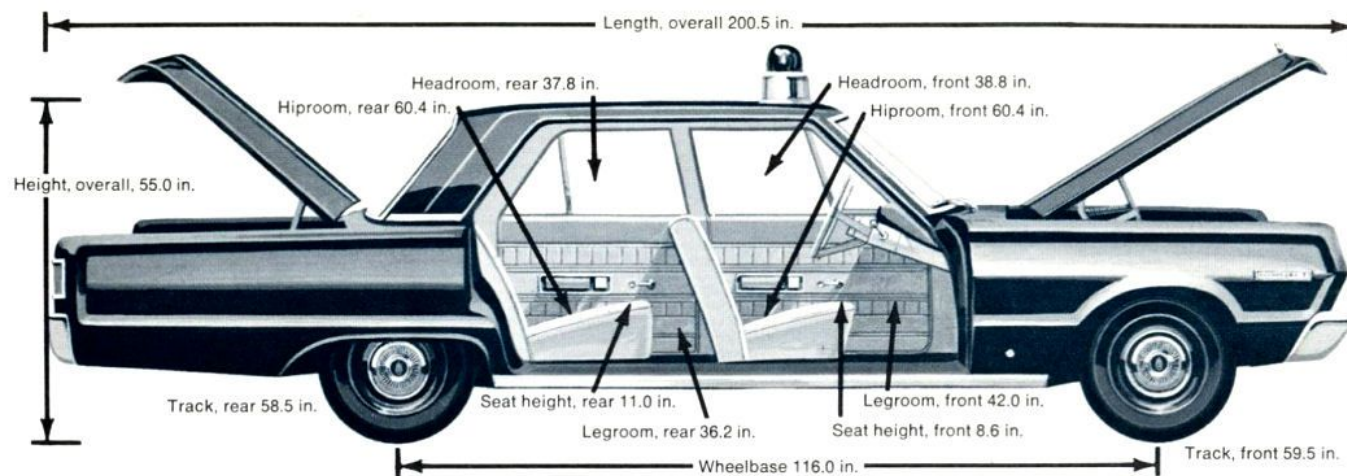
440 cu. in. Super Commando V-8 engine—optional high-performance package. Horsepower, 375 at 4600 rpm. Torque, 480 lbs.-ft. at 3200 rpm. Compression ratio, 10.1 to 1. Bore, 4.32 in. Stroke, 3.75 in. Single 4-bbl. carburetor. Dual exhausts. Twin snorkels. Coolant capacity, with heater, 18 qts. (Available only with special high-speed shift TorqueFlite automatic transmission, disc brakes, power brake booster, and 15 in. tires and wheels.)

**NOTE:** Any one of the above-listed engines may be ordered as a "package" on any Fury Police Special except Super Commando which is not available on wagons.

The policy of Chrysler Corporation is one of continual improvement in design and manufacture wherever possible to assure the finest in police vehicles. Hence, specifications, equipment and prices are subject to change without notice.

Cars illustrated, in some instances, are shown with items of optional equipment available at extra cost.





# BELVEDERE

## Body dimensions for Belvedere Emergency Wagon

Overall length	207.1 in.
Overall width	76.4 in.
Overall height	6-cyl.—56.2 in. V-8—56.4 in.
Wheelbase	117.0 in.
Floor length, tail gate open, 2nd and 3rd seats folded	121.4 in.
Floor length, tail gate closed, 2nd and 3rd seats folded	91.7 in.
Floor length, tail gate open, 2nd seat up, 3rd seat folded	88.1 in.
Floor length, tail gate closed, 2nd seat up, 3rd seat folded	57.4 in.
Width between rear wheel housings	45.3 in.
Height of rear opening	30.4 in.
Width of rear opening at floor	51.5 in.

## Specifications:

### STANDARD EQUIPMENT ON ALL PLYMOUTH BELVEDERE POLICE SPECIALS:

**CHASSIS:** Oil filter: replaceable element type (not available with 383 cu. in. engines). Heavy-duty clutch—10 in. on 6-cylinder engine. 10½ in. on 8-cylinder engine. Heavy-duty manual transmission—3-speed column shift (not available with 383 cu. in. engine). Suspension: special handling package, 8-cylinder sedans only, a specially designed and engineered suspension for pursuit-type work. Contains the following heavy-duty components matched for high-speed handling: Anti-sway bar, torsion bars, heavy-duty ball joints, extra-heavy-duty rear leaf springs and heavy-duty front and rear shock absorbers. Heavy-duty suspension, all wagons and 6-cylinder sedans, includes: Torsion bars, heavy-duty ball joints, heavy-duty rear leaf springs, and heavy-duty front and rear shock absorbers. Anti-sway bar is standard on wagons, special equipment on 6-cylinder sedans. Heavy-duty police brakes:

11 x 3 front, 11 x 2.5 rear, with special lining. Manually adjusting.

Tires: blackwall tubeless. Belvedere sedan, 7.35 x 14 (7.75 x 14 with 383 cu. in. V-8 engines); Belvedere wagon, 8.25 x 14. Extra-width wheels, 14 in. x 5½ K. High-capacity radiator and fan shroud standard on 8-cylinder models. Dual master brake cylinder. Energy-absorbing steering column.

**ELECTRICAL**—60 amp ammeter 46 amp heavy-duty Chrysler alternator. Electrical safety link in charging circuit. Dual horns. Speedometer, certified calibrated. Back-up lights. Dual windshield wipers. 2-speed windshield washer. Heavy-duty stop light switch. Fresh air heater with defrosters. 70 amp hr. battery with heat shield. Parking-brake warning light. Roadside warning flashers.

**BODY TRIM**—2- and 4-door sedans—heavy-duty tan cloth-and-vinyl (standard Belvedere I color trims available at no extra-cost). Wagons: all-vinyl trim design and color same as on Belvedere I wagons. Heavy-duty seat and seat-back springs, front seat only on wagons. Front seat-back surface supported by hardboard backing. Foam seat cushion, front and rear (front only on wagons). Heavy-duty floor mats, black rubber, front and rear. Armrests, front and rear. Ashtrays, front and rear. Padded sun visors, right and left. Full circle horn ring. Padded instrument panel. Mirror, outside left door-mounted; manual, outside right (wagons only). Seat belts: 2 front (retractable) and 2 rear (non-retractable). Roof reinforcement plate for roof-mounted light or siren.

### ENGINE AVAILABILITIES:

225 cu. in. 6-cylinder engine — standard on the Belvedere Patroller. Inclined 30 degrees to the right. Horsepower, 145 at 4000 rpm. Torque, 215 lbs.-ft. at 2400 rpm. Compression ratio, 8.4 to 1. Bore, 3.40 in. Stroke, 4.125 in. Single-throat downdraft carburetor. Coolant capacity, with heater, 14 qts. Special chrome-plated top piston rings and special oil pressure control valve for police service.

318 cu. in. V-8 engine — standard on Belvedere Pursuits. Horsepower, 230 at 4400 rpm. Torque, 340 lbs.-ft. at 2400 rpm. Compression ratio, 9.0 to 1. Bore, 3.91 in. Stroke, 3.31 in. 2-bbl. downdraft carburetor. Coolant capacity, with heater, 19 qts. Single exhaust.

383 cu. in. Commando 2-bbl. V-8 engine — optional engine package. Horsepower, 270 at 4400 rpm. Torque, 390 lbs.-ft. at 2800 rpm. Compression ratio, 9.2 to 1. Bore, 4.25 in. Stroke, 3.38 in. Single 2-bbl. carburetor. Single exhaust. Coolant capacity, with heater, 18 qts. Uses regular fuel. (Available with TorqueFlite 3-speed automatic transmission only.)

383 cu. in. Commando 4-bbl. V-8 engine—a high-performance Belvedere Pursuit Special "package". Horsepower, 325 at 4800 rpm. Torque, 425 lbs.-ft. at 2800 rpm. Compression ratio, 10.0 to 1. Bore, 4.25 in. Stroke, 3.38 in. Single 4-bbl. carburetor. Dual exhaust. Coolant capacity, with heater, 18 qts. (Available with TorqueFlite 3-speed automatic transmission only.)

**NOTE:** Any of the above-listed engines may be ordered as a "package" on any Belvedere Police Special, including Emergency Wagons.

The policy of Chrysler Corporation is one of continual improvement in design and manufacture wherever possible to assure the finest in police vehicles. Hence, specifications, equipment and prices are subject to change without notice.

Cars illustrated, in some instances, are shown with items of optional equipment available at extra cost.



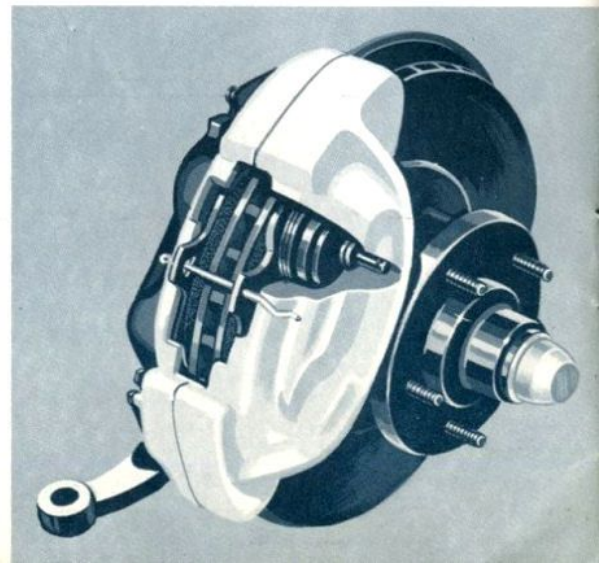
## Here are some valuable options you may want to consider.

Like our high-capacity 60 amp Chrysler alternator. It's ideal for patrol cars that make frequent stops—especially if they employ a large assortment of power equipment. A standard 60 amp ammeter will then report an accurate, up-to-date reading on all alternator activity.

Power operated front disc brakes (Fury brake illustrated) will perform in rush-hour stopping with little fade. Available on all Pursuit models. (On Fury, available with 15 in. wheels and tires only.)

You can put more pursuit in your Fury Pursuit with our 440 cu. in. Super Commando V-8. It includes 4-bbl. carb. Dual exhausts. A special heavy-duty automatic transmission with column-mounted gear selector is required (see pg. 8 for complete details).

Plymouth's Sure-Grip differential helps keep your force mobile. When one wheel is stuck—power goes to the one with grip. Optional on all models.





## All Fury Models:

Air cleaner: oil bath type (not available on 383 and 440 cu. in. V-8s).

Alternators: 60 amp Chrysler, and 65 amp Leece Neville with dual belt drive (NA with power steering).

Automatic transmission—3-speed TorqueFlite

383 cu. in. Commando 2-bbl. V-8

383 cu. in. Commando 4-bbl. V-8

440 cu. in. Commando 4-bbl. V-8

High-capacity fan: 7 blade—V-8s; 6 blade—6-cylinder.

And 7 blade with slip fan drive (with 383 or 440 cu. in. V-8s only).

Maximum cooling package, less fan.

Fast idle throttle control, manual.

Keys: universal 2-key system (NA with power tail gate).

Radio suppression package.

Roof light wiring.

Spotlight: 5 in. left, A-post mounted; 6 in. left, A-post mounted; 6 in. right, A-post mounted.

Trim: heavy-duty all-vinyl tan, 2 and 4-door sedans only.

Tires (set of five):

8.25 x 14—blackwall (NA on wagon).

8.55 x 14—blackwall (Std. on wagon).

7.75 x 15—blackwall (NA on wagon or 383 & 440 cu. in. V-8s).

8.15 x 15—blackwall (NA on wagon).

8.15 x 15—blackwall, police high-performance (NA on wagon).

## All Belvedere Models:

Air cleaner: oil bath type (not available on 383 cu. in. V-8).

Alternators: 60 amp Chrysler, and 65 amp Leece Neville with dual belt drive (NA with power steering).

Automatic transmission—3-speed TorqueFlite

383 cu. in. Commando 2-bbl. V-8.

383 cu. in. Commando 4-bbl. V-8.

High-capacity fan: 7 blade. Or, 7 blade with slip fan drive (with 383 cu. in. V-8 only).

Maximum cooling package, less fan.

Fast idle throttle control, manual.

Keys: universal 2-key system (NA with power tail gate).

Radio suppression package.

Roof light wiring.

Spotlight: 5 in. left, A-post mounted; 6 in. left, A-post mounted; 6 in. right, A-post mounted.

Trim: heavy-duty all-vinyl tan, 2 and 4-door sedans only.

Tires (set of five):

7.75 x 14—blackwall (NA on wagon).

\*8.25 x 14—blackwall (Standard on wagon)

\*7.75 x 15—blackwall (NA on wagon)

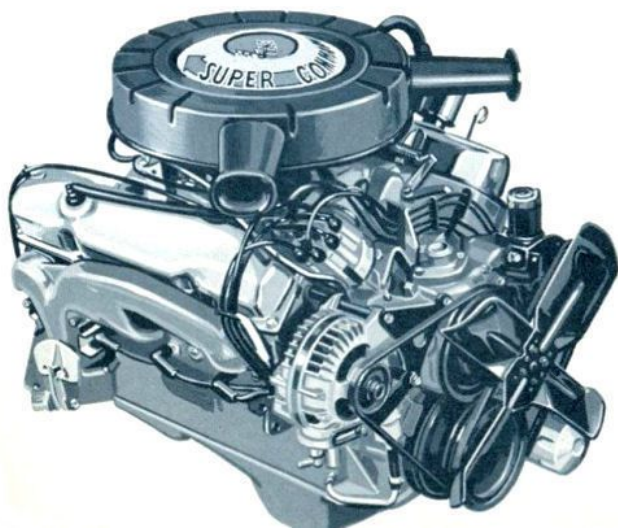
\*8.15 x 15—blackwall

\*8.15 x 15—blackwall, police high-performance

\*Requires special spare stowage.

NOTE: Where cars are consistently operated at high speeds, high performance Police tires (available by special order) are recommended.

Litho USA





**Police work is no picnic.  
But, we'll stand behind you  
for 5 years or 50,000 miles.**

**Here's how Plymouth's 5-year/50,000 mile engine and drive train warranty protects you:** Chrysler Corporation warrants, for 5 years or 50,000 miles, whichever comes first, against defects in materials and workmanship and will replace or repair at an Authorized Plymouth (or Imperial, Chrysler or Dodge) Dealer's place of business, without charge for required parts and labor, the engine block, head and internal parts, intake manifold, water pump, transmission case and internal parts (excluding manual clutch), torque converter, drive shaft, universal joints, rear axle and differential, and rear wheel bearings of its 1967 automobiles, provided the owner has the engine oil changed every 3 months or 4,000 miles,

whichever comes first, the oil filter replaced every second oil change and the carburetor air filter cleaned every 6 months and replaced every 2 years, and every 6 months furnishes to such a dealer evidence of performance of the required service, and requests the dealer to certify (1) receipt of such evidence and (2) the car's then current mileage.

PLYMOUTH DIVISION



**CHRYSLER**  
MOTORS CORPORATION