

CHRYSLER

DAYTONA



NINETEEN-NINETY

Daytona. The form that demands to be driven.

Performance personified. 1990 Daytona. Exciting sports cars made even more attractive.

V6 power. Optional on Daytona and Daytona ES, a smooth, responsive overhead cam 3.0-litre V6; available with close-ratio 5-speed or 4-speed automatic. Its strongest suit is excellent torque that provides smooth, satisfying acceleration on demand. VNT – Variable Nozzle Turbo. Chrysler at the leading edge of turbocharging technology – again – to provide even more boost for the Daytona Shelby 2.2-litre intercooled Turbo IV power plant.

On every 1990 Daytona, a restyled instrument panel and console, with central hand brake added, for enhanced looks and driving-oriented convenience.

1990 Daytona. Cars to be driven – and to be lived.

Daytona Turbo ES.



About this catalogue. Since the time of printing, some of this information may have been updated. Ask your Dealer for details before ordering. Some of the equipment shown or described may be optional and available only at extra cost.



Daytona Shelby interior with optional leather seats. A touch of comfort and luxury to enhance the excitement of Daytona performance.

The feeling beneath the form. Comfort and control.

Every Daytona offers living arrangements that match its personality – and yours. Shown are the Daytona Shelby multi-adjustable Power-Enthusiast bucket seats in optional leather, with vinyl trim, also available on Daytona ES and ES Turbo. Functional

amenities on every Daytona include the new, driver-oriented instrument panel and controls, console with centre armrest and hidden storage, message centre, and a driver's left footrest. All contributing to an eminently user-friendly environment.



Complete electromechanical analogue instrumentation keeps you informed of all vital functions including voltage, oil pressure, water temperature and vacuum/turbo-boost.

The fire of uncompromising heritage: Shelby.



Racetrack-bred. Refined for society. Daytona Shelby exposes you to breathtaking performance.

2.2-litre intercooled Turbo IV engine with Variable Nozzle Turbocharging (VNT) feeds power through a high-torque capacity Getrag five-speed transaxle. Also to be available, a Shelby high-performance suspension system, electronically adjustable to suit your driving style and road conditions; console-mounted controls will let you choose Firm for maximum response, Soft for maximum comfort, or Normal for a happy medium.* Race-inspired aerodynamics and four-wheel disc brakes round out the superb handling that characterizes Daytona Shelby.

So pick a winding road or your favourite highway ... and flee from the ordinary.

* Late introduction - see footnote following "Selected Standard and Optional Features" listing later in this catalogue.

Distinctive looks: 16-inch cast aluminum wheels, Performance tires, and power bulge hood with "VNT Intercooled" decals intensify the aggressive stance that spells Shelby.

The foundation: revive your faith in the pure pleasure of driving.

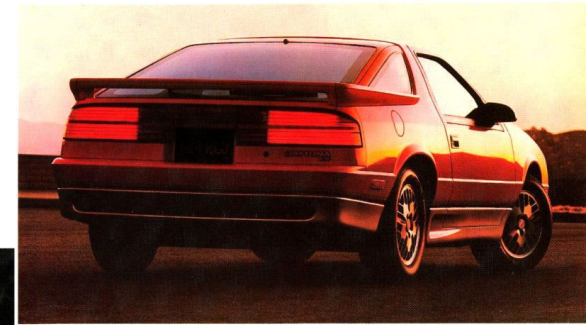
Standard Daytona brings a new dimension in performance at an affordable price. And hidden beneath its exterior is a solid argument for choosing Chrysler. Quality. Quality that translates into performance, reliability, and endurance.

Daytona offers a variety of luxury options to tailor each model to suit individual tastes. Value packages can provide selected groups of options at considerable savings compared with buying separately, including such popular items as power windows and speed-sensitive actuation power door locks, electronic speed control, a rear window wiper/washer, and upgraded audio systems. Ask your Dealer for details.

Daytona features a redesigned 3-plane shifter and a convenient centrally mounted parking/hand brake.

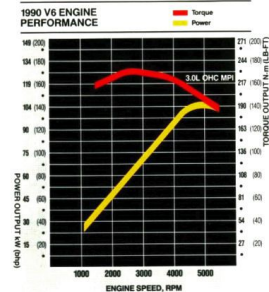
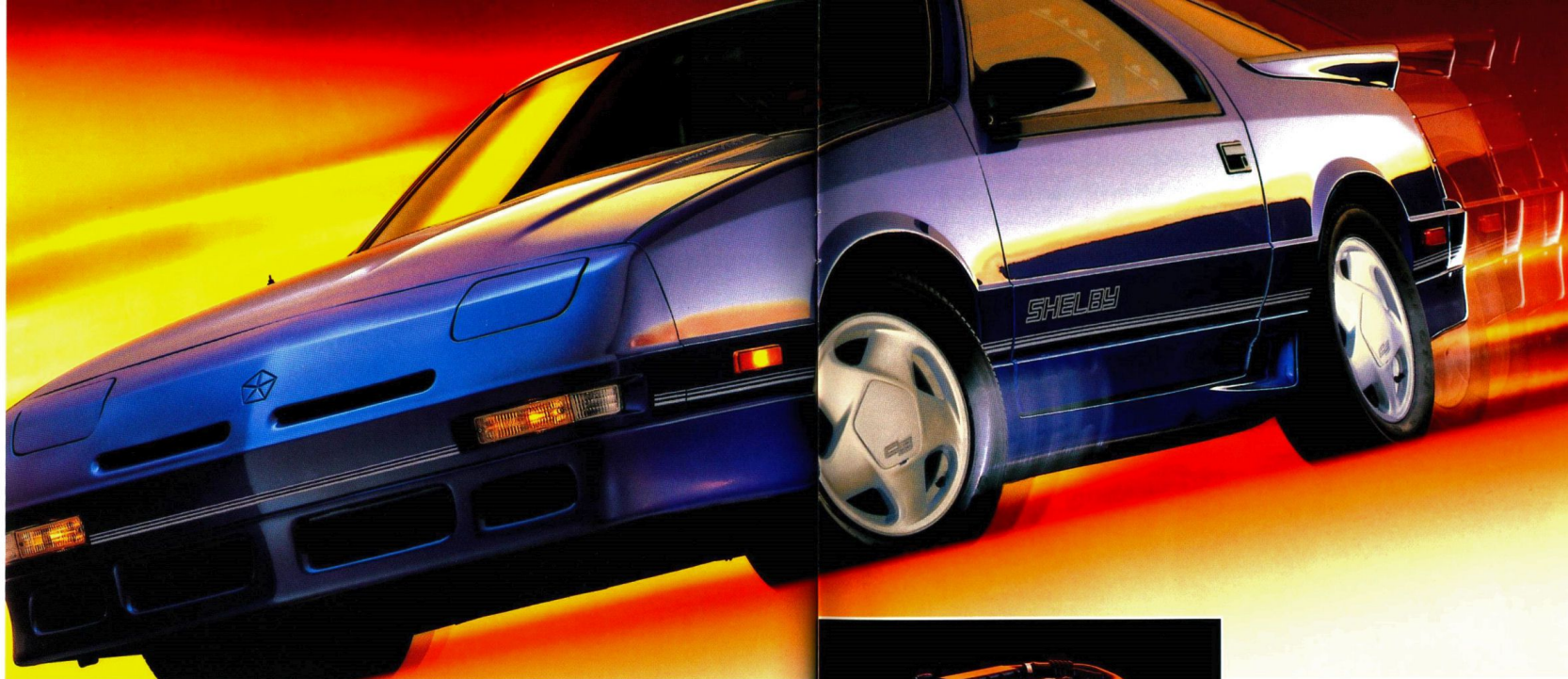


Daytona ES. Bridging the gap between Daytona and performance-oriented Daytona ES Turbo. Standard engine is fuel-efficient 2.5-litre, with smooth, powerful 3.0-litre V6 optional. But sharing with Daytona Turbo ES most of the distinctive styling cues that unmistakably spell sports car.



Daytona. Assured by Chrysler's 7/115 Powertrain and 7/160 Anti-corrosion Warranties. Ask your Dealer for details.

At the leading edge of turbocharging technology, VNT turbine vanes pivot to increase torque at low engine speeds. Included with the 2.2 intercooled Turbo IV or Daytona Shelby.



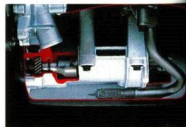
The broad torque curve of the 3.0-litre V6, optional on Daytona and Daytona ES, translates into immediate throttle response and smooth getaway power, especially welcome at lower engine speeds. Available with 5-speed manual or optional Ultradrive 4-speed automatic.

The evolution of performance: a Chrysler priority.

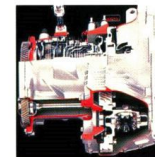
Each year, Chrysler engineers and designers spend thousands of hours and millions of dollars on research.

They experiment with new materials, conceive new designs, and modify components. They construct prototypes, test performance, and measure results.

Whether they're testing a new turbocharger or reducing vibration with balance-shaft engines, the goal is the same: ensure that with each new year, Chrysler cars perform better, "feel" better, than they did before. It's the evolution of performance.



Ready for action. Look for effortless and smooth performance from the optional Daytona 3.0-litre V6 engine, with Multi-point fuel injection, available on Daytona and Daytona ES.

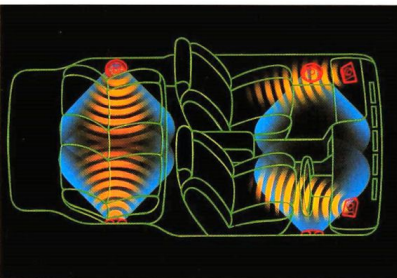


A sophisticated smooth-shifting 4-speed automatic is an option on Daytona and Daytona ES with the optional 3.0-litre V6.



Standard on Shelby is a close-ratio 5-speed manual transaxle with Getrag high-capacity gear set.

A sample of Daytona options.



Chrysler-Infinity™ 1 AM stereo/FM stereo cassette sound system features 6 strategically positioned, individually powered speakers, seek-and-scan and memory-scan. Standard on ES Turbo and Shelby models.

Left and right illuminated visor/vanity mirrors to keep you looking good are optional on Daytona ES.



Security and anti-theft alarm system is optional on Daytona ES Turbo and Daytona Shelby.



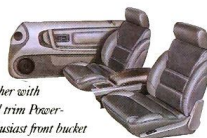
Cloth front bucket seats. Featuring adjustable head restraints and seatback recliners. Standard Daytona, Daytona ES.



Cloth Enthusiast front bucket seats. Both seats feature adjustable head restraints and seatback recliners. Driver's seat includes power adjustments for lumbar and seatback wings. Standard Shelby, ES Turbo, optional Daytona ES (requires V6 Performance Package).



Cloth Power-Enthusiast front bucket seats. Driver's seat includes power adjustments for seat track, lumbar, seatback wings, and seatback recliners. Optional Shelby, ES Turbo (requires Popular Equipment Package). Optional Daytona ES (requires V6 Performance Package).



Leather with vinyl trim Power-Enthusiast front bucket seats. Driver's seat includes power adjustments for seat track, lumbar, seatback wings, and seatback recliners. Optional Shelby, ES Turbo (requires Popular Equipment Package), Daytona ES (requires V6 Performance Package).

CHRYSLER DAYTONA SELECTED STANDARD AND OPTIONAL FEATURES

	Daytona	Daytona ES	Daytona Turbo	Daytona Shelby
AIR BAG SYSTEM - Driver side only	O	O	O	O
AIR CONDITIONING - Bi-level	O	O	O	O
ALTERNATOR - 90-amp	S	S	S	O
120-amp (only with Turbo IV engine)	O	NA	NA	S
BATTERY - 500-amp, maintenance-free	S	S	S	S
Power-assisted 4-wheel disc, vented front, Performance pads and calipers	O	O	S	S
Hand brake/parking brake, centrally mounted	S	S	S	S
CARGO COMPARTMENT - Tonneau cover	O	S	S	S
CHILD-SEAT ANCHORAGE PROVISION	S	S	S	S
CONSOLE - Full-length includes centre armrest and cassette storage	S	S	S	S
Overhead, includes compass and ambient readouts, storage for sunglasses and garage door opener	NA	O	O	O
CORROSION PROTECTION - Extensive use of galvanized steel, lower body-side urethane stone chip-resistant coating; front fender plastic liners (backed by Chrysler's Anti-Corrosion Limited Warranty)**	S	S	S	S
DAYTIME RUNNING LIGHTS	S	S	S	S
DECALS - "Shelby" and "VNT Intercooled"	NA	NA	NA	S
DEFROSTER - Rear window; DEMISTERS - Front side windows	S	S	S	S
ENGINE BLOCK HEATER	S	S	S	S
FOG LAMPS	NA	S	S	S
FOOTREST - Driver's side	S	S	S	S
GLASS - Tinted, all windows	S	S	S	S
HEADLAMPS - Halogen, concealed, flash-to-pass feature	S	S	S	S
INSTRUMENT PANEL - Sport dials with electromechanical speedometer, trip odometer, tachometer, gauges for fuel, engine coolant temperature, volts, oil pressure; vacuum/turbo-boost gauge with turbo engines	S	S	S	S
LAMPS - Map/reading, cargo compartment, glove box, underhood	O	O	S	S
Ignition switch with time-delay feature	S	S	S	S
MESSAGE CENTRE - Graphic, shows low-washer fluid, door/hatch ajar	S	S	S	S
MIRRORS - Inside, rearview, day/night	S	S	S	S
Outside, dual, manual remote control	S	S	S	S
Outside, dual, electric remote control (heated)	O	O	O	O
Visor/vanity, driver and passenger (dual illuminated optional)	S	S	S	S
POWER ASSISTS - Door locks (with rolling-auto-lock and anti-lock-out features)	O	O	O	O
Windows	O	O	O	O
Seat (driver only)	NA	O	O	O
RADIOS - Electronically tuned, with digital readout and clock	S	S	S	S
AM stereo*/FM stereo, 4 speakers	S	S	NA	NA
AM stereo*/FM stereo cassette	O	O	NA	NA
AM stereo*/FM stereo, Chrysler-Infinity™ I with seek-and-scan, memory-scan, Dolby B†, joystick balance/fader speaker control, 6 Infinity™-brand individually amplified speakers	O	O	S	S
Chrysler-Infinity™ II - same as Chrysler-Infinity™ I plus 5-band graphic equalizer	NA	O	O	O
REMOTE RELEASES - Hood, liftgate, fuel door	S	S	S	S
SEATS - Front bucket, cloth, low-back, dual recliner	S	S	NA	NA
Front Enthusiast bucket, cloth, dual recliners, driver side power back wings and lumbar	NA	O	S	S
Power Enthusiast bucket, cloth (available in leather), driver side power back wings, lumbar and recliner, 6-way track	NA	O	O	O
Rear, split fold-down seatbacks	S	S	S	S
SEAT BELTS - 3-point shoulder/lap, 2 front, 2 rear	S	S	S	S
SECURITY ALARM PACKAGE	NA	NA	O	O
SPEED CONTROL - Steering wheel-mounted controls	O	O	O	O
SPOILER - Front (air dam-type) and rear	O	S	S	S
STEERING - Power-assisted, rack-and-pinion, 14:1 ratio	S	S	S	S
STEERING COLUMN - Tilt	O	O	S	S
STEERING WHEEL - Leather-wrapped	NA	O	S	S
SUNROOF - Hinged, removable solar filter glass	O	O	O	O

CHRYSLER DAYTONA SELECTED STANDARD AND OPTIONAL FEATURES

	Daytona	Daytona ES	Daytona Turbo	Daytona Shelby
SUSPENSION - Sport, with gas-charged struts and shocks	S	S	NA	NA
Performance-Handling, high-rate gas-charged struts and shocks, performance-tuned springs and antiway bars	O	O	S	NA
Maximum performance, Shelby-tuned shocks, struts, springs and larger antiway bars	O	NA	NA	S
Electronic variable, driver-selectable	NA	NA	NA	S ^(a)
TIRES - P185/70 R14 14" steel-belted radials, black sidewall, All-Season	S	NA	NA	NA
P205/60 R15 15" steel-belted radials, low black letter, All-Weather	O	S	S	NA
Performance	O	S	S	NA
P225/50 VR15 15" steel-belted radials, low black letter, Unidirectional, Speed-Rated	O	NA	NA	NA
P205/55 VR16 16" steel-belted radials, low black letter, Unidirectional, Speed-Rated	NA	NA	NA	S
WHEELS - 14" x 5.5" cast aluminum (steel, aerotype, standard)	O	NA	NA	NA
15" x 6.5" cast aluminum	O	NA	NA	NA
15" x 6.0" cast aluminum - Euro-cast	O	S	S	NA
16" x 6.0" cast aluminum	NA	NA	NA	S
WIPER/WASHER - Windshield, variable delay, intermittent; pulse-wipe	S	S	S	S
Rear, fixed-delay, intermittent	O	O	O	O

S = Standard Equipment O = Optional Equipment NA = Not Available *Not included at start of model year. Introduction date TBD
†Some AM stereo broadcast stations may not be compatible with this radio. **See Dealer for details. ††Dolby B is a trademark of Dolby Laboratories, Inc.

DIMENSIONS, WEIGHTS ^(a) AND CAPACITIES	2-Door 2 + 2 Liftback
	mm in.
Wheelbase	2465 97.0
Overall Length	4550 179.2
Overall Width	1760 69.3
Overall Height ^(a)	1275 50.1
Turning Diameter - m (ft.) (curb-to-curb)	10.4 (34.0)
Curb Weight - kg (lb.)	1245 (2750)
Usable Luggage Capacity - L (cu. ft.)	
Rear seats down	935 (33.0)
Rear seats up	484 (17.1)
Passenger Capacity	4
Fuel Capacity - L (Imp. gal.)	53 (11.7)

FRONT/WHEEL-DRIVE ENGINES AND TRANSEXLES	2.5-litre 4-cyl. Balance-Shaft	2.5-litre 4-cyl. Turbo I-4 Balance-Shaft	2.2-litre 4-cyl. VNT Intercooled Turbo I-4 Balance-Shaft	3.0-litre V6**
Availability				
Daytona	Standard	Optional	Optional	Optional
Daytona ES	Standard	NA	NA	Optional
Daytona ES Turbo	NA	Standard	NA	NA
Daytona Shelby	NA	Optional ^(b)	Standard ^(b)	NA
Type	SOHC	SOHC	SOHC	SOHC x 2
Fuel Delivery	Throttle-Body EFI	Sequential MPI	Sequential MPI	MPI
Net Power - kW (bhp) @ rpm	75 (100) @ 4800	112 (150) @ 4800	130 (174) @ 5200	105 (141) @ 5000
Net Torque - N m (lb-ft) @ rpm	183 (135) @ 2800	244 (180) @ 2000	285 (210) @ 2400	232 (171) @ 2800
Exhaust System	Stainless steel for extended life (Performance-tuned on Turbo I, IV and V6)			
Transaxle and OTGR* Availability				
5-Speed Manual - Standard	2.51	2.51	2.74 ^(c)	2.51
3-Speed Automatic - Optional	3.07 ^(d)	3.02	NA	NA
4-Speed Automatic - Optional	NA	NA	NA	2.36 ^(e)

EFI - Electronic Fuel Injection SOHC - Single Overhead Camshaft *OTGR - Overall Top Gear Ratio (OTGR) NA - Not Available VNT - Variable Nozzle Turbo MPI - Multi-Point Fuel Injection **Built by Mitsubishi Motors Corporation †Built on 4-passenger load base model, base engine and standard tires ††2.2-litre Turbo I-4 engine 2.2-litre Turbo I-4 on Shelby with automatic transmission †††Rear gear set (d)With lock-up torque converter

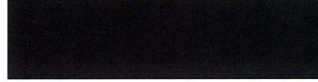
TRAILER TOWING: Ask your Dealer for Chrysler Canada's special brochure.

THIS CATALOGUE DOES NOT LIST ALL STANDARD AND OPTIONAL EQUIPMENT ITEMS. SOME OPTIONS ARE AVAILABLE ONLY IN COMBINATION WITH OTHERS, AND SOME EQUIPMENT MAY BE SUBJECT TO AVAILABILITY RESTRICTIONS. SEE YOUR DEALER FOR DETAILS.

1990 Daytona Exterior Colours



Daytona Blue Metallic c/c



Twilight Blue p/c



Platinum Silver Metallic c/c



Claret Red p/c



Black Cherry p/c



Flash Red c/c



Bright White c/c



Black c/c

c/c - Clear Coat p/c - Pearl Coat

Colour reproductions are approximate and not necessarily exact. Your Dealer can show you colour sample cards that more closely represent the actual colours. Note also that colour availability varies by model and body style.

Specifications, descriptions and illustrative material contained herein are based on authorized information. Although specifications, descriptions and illustrations were believed to be correct at the time this publication was approved for printing, accuracy cannot be guaranteed. Chrysler Canada Ltd. reserves the right to discontinue models or options at any time or change specifications and materials, equipment or design without notice and without incurring obligation.

Some equipment may not be exactly as illustrated in this publication. Some of the illustrative material contained herein may show equipment that is not standard and is available only at extra cost. Equipment referred to as available or optional may be at extra cost. Some options are required in combination with other options. For the price of the model with the equipment you desire or verification of specifications and equipment availability contained herein, see your Chrysler Canada Ltd. Dealer.

Some of the items shown on vehicles in this publication may be available only through retail organizations and establishments not connected with Chrysler Canada Ltd. Availability, price, quality and durability of these items rests solely with the respective manufacturers and their sales organizations, and Chrysler Canada Ltd. assumes no responsibility for their availability or their use.



All of Chrysler Canada's North-American-built cars are protected by warranty coverage that spells confidence. Upon expiration of the 12-month or 20,000-kilometre Basic Warranty, the Powertrain Warranty extends coverage up to 7 years or 115,000 kilometres*. The Corrosion Warranty covers body sheet metal against rust-through for 3 years (regardless of distance driven) and outer body panels are covered up to 7 years or 160,000 kilometres. See your Dealer for full details.

*A deductible may apply.

LEASING — Any Chrysler, Dodge or Plymouth car or Dodge truck can be leased from your local Chrysler Dealer - The Leasing Professional.

Mopar  **Autopar**
GENUINE PARTS
Quality...Value...
Performance Proven
There is no substitute!



Physically
Challenged
Assistance
Program



Proud sponsor
of the
National
Hockey League

CHRYSLER CANADA 
Changing the landscape.