

INTERNATIONAL TOURING SERIES



ALLANTÉ

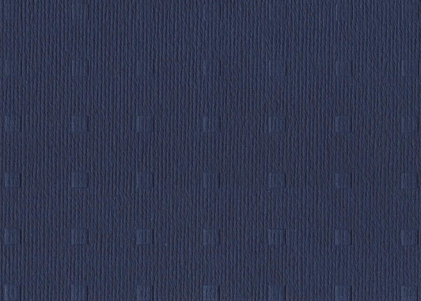
1 9 9 2

SEVILLE STS



ELDORADO
TOURING
COUPE

CADILLAC STYLE



TOURING
SEDAN

ALLANTÉ

Technological breakthroughs make Allanté the singular roadster whose high-performance capabilities can be enjoyed year-round.

Advanced Traction Control and anti-lock brakes allow the chassis to match the output of the 200-horsepower V8 to road conditions. The Speed-Sensitive Suspension makes Allanté equally nimble crosstown or cross-country.

And within its handcrafted Italian coachwork, Allanté not only accommodates your every comfort, it accommodates skis, golf clubs, antiques. Allanté also excels with one of the finest vehicle protection plans of any automobile sold in the United States.



CADILLAC
STYLE

| | |
|--|------------|
| • ALLANTÉ | 1-13 |
| • SEVILLE STS AND SEVILLE | 14-29 |
| • ELDORADO TOURING COUPE AND ELDORADO | 30-43 |
| • CADILLAC TOURING SEDAN | 44-47 |
| • OWNERSHIP | 48 |
| • PAINT SELECTIONS | BACK COVER |



• ALLANTÉ 1-13
• SEVILLE STE AND SEVILLE 14-20
• ELIZABETH TOURING COUPE 30-43
• ELIZABETH TOURING SEDAN 44-47
• OWNERSHIP 48
• PAINT SELECTIONS BACK COVER

A L L A N T É

Technological breakthroughs make Allanté the singular roadster whose high-performance capabilities can be enjoyed year-round.

Advanced Traction Control and anti-lock brakes allow the chassis to match the output of the 200 horsepower V8 to road conditions. The Speed-Sensitive Suspension makes Allanté equally nimble crosstown or cross-country.

And within its handcrafted Italian coachwork,

Allanté not only accommodates your every comfort, it accommodates skis, golf clubs, antiques. Allanté also excels with one of the

finest vehicle protection plans of any automobile sold in the United States.



ALLANTÉ



ALLANTÉ

Allanté brings the expansiveness of the outside world into the cockpit. This roadster's headroom, legroom and shoulder room rival those found in the front seat of a luxury sedan. The openness of the inte-



rior mirrors the freedom that is the essence of top-down motoring. Hand-matched Italian leather is tailored to the 10-way Recaro® bucket seating areas. The driver's-side memory allows you to program two seating positions and an exit setting. And the electronic climate control also includes up, down and normal settings that allow you to stretch the seasons by having the top down in cold, sunny weather.



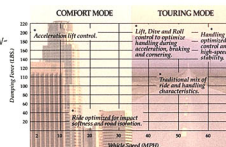


ALLANTÉ · PERFORMANCE

Allanté's sophisticated balance of performance systems anticipates and adapts to changing driving conditions. The powerful 4.5 liter V8 engine with sequential port fuel injection generates 200 horsepower and 270 lbs.-ft. of torque for exhilarating performance over a wide range of speeds. This high torque is then managed by Allanté's advanced Traction Control system. It senses wheel speed as you accelerate. If one or more of the wheels begin slipping on an icy surface, for example, it pulses the Bosch III Traction Control actuator to apply the brakes and reduce engine power as necessary to limit the wheel slip, thereby improving traction. Simultaneously, Allanté's Speed-Sensitive Suspension automatically retunes itself to match changing speeds. And Allanté's speed-sensitive variable assist steering adapts over a range of speeds for greater highway stability and parking ease.

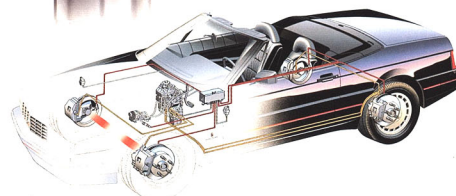
An adaptable speed-sensing suspension.

Allanté's electronically controlled Speed-Sensitive Suspension reacts to changing vehicle velocity automatically within 15/100 of a second. In city driving, it shifts the struts of the fully independent suspension into a "comfort" damping mode to help isolate you from bumps. At moderate speeds, struts shift to "normal" mode for a balance of comfort and control. And at high speeds, struts shift into "touring" mode to provide even firmer control and road feel.



Precious metals.

The superior durability of Allanté's dual platinum-tipped spark plugs are designed for 100,000 miles of peak performance without replacement.

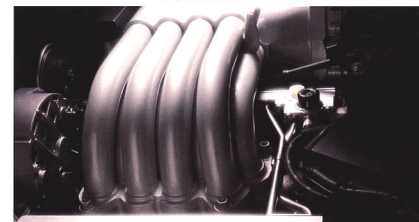


Adaptive traction.

If only one wheel experiences slippage during acceleration, Traction Control applies brake pressure to the slipping wheel to limit slippage at that wheel exclusively, allowing the remaining drive wheel to receive and transmit available engine power.

Ram air tuning.

Tuned air intake runners in Allanté's high-output V8 pack air more densely at the intake valve to achieve greater cylinder charge during combustion at specific engine speeds. This translates to improved horsepower and performance.



ALLANTÉ · COMFORT & CRAFTSMANSHIP



Electronics and acoustics in perfect harmony. Allanté's standard Delco/Bose Gold Series Sound System is custom equalized to the contours and textures of the leather-trimmed interior in which it performs. Surrounding you with 200 watts of crisp, full sound, this superb audio system offers compact disc realism, a full-featured cassette, plus AM stereo*/FM stereo radio.



*Receives C-Quam_® stereo broadcasts. Most AM stereo stations across the country broadcast in C-Quam_®, but some do not. Check with your local stations for compatibility in your area.



Whisper-quiet aerodynamics. The Allanté is so aerodynamically refined, you can hold a normal conversation with the top down at highway speeds.



The beauty is in the detail.

Wherever you look, you'll see the care and craftsmanship that make Allanté America's ultra-luxury roadster. Your selection of analog or digital instrument panels puts its sophisti-

cated driving systems within easy view. The supple leather is hand-fitted to the seating areas of the ten-way power adjusting Recaro_® seats. The Supplemental Inflatable Restraint System (air bag) is concealed within the steering wheel hub. Plus amenities like power headlamp washers, express-down windows, central door unlocking, and power-latching roof design that electrically secures the top with the touch of a button.

Allanté affords you 16.3 cubic feet of usable luggage space. Its pass-through design accommodates golf clubs, skis and more. And for added convenience, passenger doors unlock with a second turn of the key in the luggage compartment lock or driver door lock.





ALLANTÉ

A systems approach to safety.

Allanté's advanced safety systems are designed

to work in concert with one another to help

protect you and your passenger.

A rugged safety cage and side-guard door

beams work in harmony with energy-absorbing

front and rear crush zones to help protect you

in the event of a collision. In a frontal impact,

the engine rotates downward and the hood

buckles to help avoid intrusion into the pas-

senger compartment. Anti-lock braking and

Traction Control combine to afford you supe-

rior traction and control during both braking

and acceleration. And a driver's-side Supple-

mental Inflatable Restraint System (air bag) is

designed to be used

with your safety belt.



An enlightened outlook.
A headlamp/foglamp
washer helps assure your
maximum visibility.

SAFETY



Advanced braking
technology.

Four magnetic sensors
send wheel speed infor-
mation to two parallel
computers, which an-
alyze the data separ-
ately, monitor each
other for greater re-
liability, and engage the
ABS system.

The advanced Bosch III ABS system.

Allanté is the first automobile in

the world to be produced with a Bosch

III anti-lock braking system. If wheels begin to

lock during sudden stops or when braking on

slippery surfaces, this sophisticated system

automatically pulses Allanté's four-wheel disc

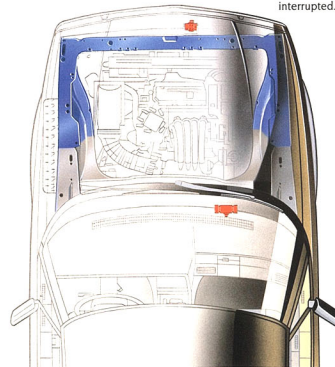
brakes up to 15 times per second to help you

maintain steering control.

Protection that is as good as
gold.

Gold-plated connec-
tions and strategically
located sensors in
Allanté's driver's-side
Supplemental Inflatable
Restraint System (air

bag) help assure
deployment in 1/50th of
a second, and only when
specific collision condi-
tions exist. A back-up
power supply stands
ready to deploy the sys-
tem if battery power is
interrupted.



SAFETY FEATURES ON 1992 ALLANTÉ, SEVILLE, ELDORADO, TOURING SEDAN

OCCUPANT PROTECTION

Manual lap/shoulder
safety belts, outboard
rear-seat positions

Manual lap safety belts,
center front/rear seat po-
sitions, where applicable

Side-guard door beams

Supplemental Inflatable
Restraint System (air bag),
driver only, with manual
lap/shoulder safety belts
for the driver and right
front passenger both
including visual and
audible warning system.

Energy-absorbing instru-
ment panel

Energy-absorbing seat-
back tops, front

Energy-absorbing steering
column

Interlocking door latches

Laminated windshield
glass with urethane
bonding

Passenger-guard inside
door lock handles
Inertia-locking, folding
front seatbacks, two-door
models

Safety armrests

Head restraints, driver and
right front passenger (ad-
justable), rear seats
(Seville, Seville STS,
Eldorado, Eldorado
Touring Coupe,
Touring Sedan)

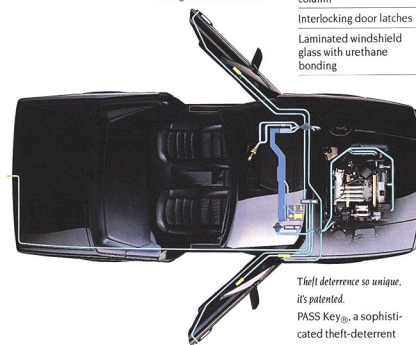
Breakaway inside rearview
mirrors

Security door lock and
door retention
components

Power door locks with au-
tomatic locking features
(Seville STS, Eldorado
Touring Coupe, Touring
Sedan)

Tempered safety glass,
side windows; also rear
windows

Front and rear crush zones



Theft deterrence so unique,
it's patented.
PASS Key®, a sophis-
ticated theft-deterrent
system, employs a
coded electronic pellet
placed discreetly in
your ignition key. When
the key is inserted in
the ignition, the code in
the key must match that
contained in the vehi-
cle's on-board computer.

If there is no match, or if
ignition wiring is dis-
turbed, both fuel
system and starter are
instantly shut down
from three to four min-
utes. This system may
qualify you for compre-
hensive insurance
discounts.

ALLANTÉ • QUALITY & SPECIFICATIONS



An international alliance.

The Allanté was commissioned by Cadillac and designed by Pininfarina, master designer of the

Ferrari Testarossa. Always intended to be a



convertible roadster,

Allanté incorporated

rigidity and strength

from the outset. The

lessons of the wind tunnel honed its profile.

The result: a solid, stable, open automobile

that rivals a closed design.

The Allanté is crafted from premium two-sided

galvanized German steel, Swiss aluminum and

hand-matched Italian leather seating areas in

the Turin facilities of Pininfarina.

Then, the Allanté Airbridge—a fleet of special

747s—transports the cars to the United States

for final assembly. Here, at Cadillac's advanced

manufacturing facility, Allanté becomes one of

the world's most technologically sophisticated

automobiles.

1992 ALLANTÉ SELECTED STANDARD FEATURES

MODELS

Allanté Hardtop/Convertible with hard and soft top; your choice of digital or analog instrument panel.

Allanté Convertible includes soft top and analog instrument panel.

CADILLAC-EXCLUSIVE TOTAL OWNERSHIP PRIORITY SERVICES*

Allanté Assurance Plan—4-year/50,000-mile bumper-to-bumper warranty, including free towing and a portfolio of other services, and 7 years/100,000 miles on powertrain, major assembly components and rust-through protection.* There is no deductible.

Allanté Hotline: 1-800-ALLANTÉ for 24-hour toll-free assistance. Cadillac Consumer Relations Center. Gold Key Delivery System. Cadillac Roadside Service®.

COMFORT AND CONVENIENCE

Body computer module Climate control, electronic with outside temperature display

SEATING/INTERIOR

Armrests, door-leather-trimmed Console, includes leather-trimmed armrest, ash receiver, cigarette lighter, storage compartment with coin holder, release but-



The aluminum hardtop weighs only 58 lbs. and fastens quickly into place. Includes heated rear window and glass quarter windows.



Allanté's power-latching soft-top design features gas-strut assist, electrically heated glass rear window and glass quarter windows.



The open-car aerodynamics of Allanté turn the wind into a whisper, allowing you to have a normal conversation at highway speeds with the top down.

Lamps, interior—including foot well, overhead courtesy/map, door-mounted warning/courtesy underhood, luggage compartment

Floor mats, carpeted Headrests, two-way adjustable—leather-trimmed Lamps, exterior—including fog, low- and high-beam composite headlamps with unique lamp-out substitution feature

Seatback pockets

Seats, Recaro®, ten-way power, including recliner/lumbar support; and leather seating areas with French seams. Driver seat includes two memory settings plus "exit" feature

MUSIC SYSTEM

Antenna, power Delco/Bose Gold Series Sound System: AM stereo**/FM stereo radio

with both compact disc and Dolby® auto-reverse cassette tape players; custom-equalized for Allanté interior

CONTROLS AND INSTRUMENTATION

Clock, digital display Computer diagnostics Convertible top—power latching

Cruise control Defogger electric rear glass window in both convertible top and hardtop

Defogger, front side windows Driver information center Fuel filler door release—power

Illuminated entry system Indicators—low brake fluid, fuel and windshield washer fluid levels

Luggage compartment lid release and pull-down—power Mirrors, outside rearview (collapsible)—power, heated

Monitors, low engine coolant, engine oil Steering, Tilt-Wheel, adjustable—with comfort hand-grips and leather-trimmed rim

Twilight Sentinel® Washers, headlamp with independent control—power

Windows, express-down, driver and passenger—power

Windshield wiper system, high-performance controlled-cycle—with wet-arm design washer

APPEARANCE AND PROTECTION

Body panels, two-sided galvanized steel; aluminum hood, roof, and deck lid

Bumper fascia, one-piece wraparound—front and rear Central door unlocking from doors and luggage compartment locks

Paint finish, clearcoat for a rich luster Safety belts, driver and passenger—manual lap/shoulder

Stop lamp, center high-mounted Supplemental Inflatable Restraint System (air bag) in steering wheel hub

Theft-deterrent system, PASS Key® Theft-deterrent VIN tags

ENGINE/CHASSIS

4.5 liter high-output V8 with tuned sequential port fuel injection Alternator, 124-ampere

Anti-lock brake system—Bosch III Battery, heavy-duty—Delco Freedom® III

Exhaust system, stainless steel Front-wheel drive

Oil life indicator

Parking brake release, automatic—three-stroke apply Spare tire, compact

Spark plugs, dual platinum-tipped—for 100,000-mile service intervals

Speed—Sensitive Suspension—with 3 damping positions

Steering, Variable Assist Traction Control with instrument panel indicator

Transmission, four-speed automatic—with overdrive and Cadillac-exclusive viscous converter clutch

AVAILABLE FEATURES AT NO EXTRA COST

Analog instrumentation—Hardtop/Convertible License plate mounting provisions—front

AVAILABLE FEATURES AT EXTRA COST

Instrument panel, digital—Convertible Paint, Pearl White—Convertible

*See your dealer for terms of this limited warranty. †For additional information, please see p. 48.

**Receives C-Quam stereo broadcasts. Most AM stereo stations across the country broadcast in C-Quam, but some do not. Check with your local stations for compatibility in your area.

SPECIFICATIONS 1992 ALLANTÉ

Engine 4.5 liter high output V8 with tuned sequential port fuel injection
Power 200 bhp @ 4400 rpm
Torque 270 lbs.-ft. @ 3200 rpm
Traction Control standard, Bosch III electronic system
Recommended fuel/tank capacity Unleaded premium/22.0 gallons usable
Transmission four-speed automatic with overdrive and Cadillac-exclusive viscous converter clutch
Final drive ratio (effective) Performance 3.21:1
Suspension Speed Sensitive Suspension; fully independent with front stabilizer bar
Steering power Variable Assist rack and pinion; 15.6:1 ratio
Brakes Bosch III anti-lock; power four-wheel disc
Wheels Cadillac-exclusive 16"x7" forged aluminum alloy
Tires Cadillac-exclusive Eagle VL Goodyear P225/55VR16 steel-belted blackwall radials

DIMENSIONS

Wheelbase 2525mm/99.4"
Length 4539mm/178.7"
Height 1300mm/51.2"
Hardtop/Convertible 1308mm/51.5"
Width 1866mm/73.5"
Tread width
Front . . . 1533mm/60.4" Rear . . . 1533mm/60.4"
Turning diameter (wall-to-wall) 12.9m/42.7"
Curb weight
Hardtop/Convertible 1611.0kg/3551.7lbs.
Convertible 1583.5kg/3491.1lbs.
Seating capacity 2
Headroom
Hardtop/Convertible 944mm/37.2"
Convertible 977mm/38.3"
Legroom 1097mm/43.2"
Hip room 1383mm/54.4"
Shoulder room 1466mm/57.7"
Luggage capacity: 0.45 cu. m/16.3 cu. ft.
Specifications as of 7-91



Standard Delco/Bose Gold Series Sound System includes both auto-reverse Dolby® cassette tape player and the stunning realism of compact discs.



Analog instrument panel.



Digital instrument panel.

SEVILLE STS

You've never driven a Seville like this before.

It started with a blank sheet of paper. What resulted is a refined balance of seamless power, dynamic handling and vault-like solidity. The new Seville STS. Advanced driving systems

enable the STS to instantly adapt to changes in vehicle speed, weather conditions, even the angle of a turn.

Central to the Seville STS is a new interior environment focused on enhancing the harmony between the driver and the road. Its innovations in human engineering help keep you exhilarated and refreshed.



CADILLAC
STYLE



SEVILLE STS

You've never driven a Seville like this before.

It started with a blank sheet of paper. What resulted is a refined balance of seamless power, dynamic handling and vault-like solidity. The new Seville STS. Advanced driving systems

enable the STS to instantly adapt to changes in vehicle speed, weather conditions, even the angle of a turn.

Central to the Seville STS is a new interior environment focused on enhancing the harmony between the driver and the road. Its innovations in human engineering help keep you exhilarated and refreshed.



SEVILLE STS





SEVILLE STS

Openness and order.

The five-passenger Seville STS rewards the intellect as well as the senses. A natural tanning process renders the aromatic Nuance leather supple, while instilling longevity that provides durability against both abrasion and ultraviolet exposure. The center portion of the leather seating areas is then perforated to enhance its breathability.

The linear-grained Zebrano wood—chosen after a four-continent search—reinforces the openness of the interior.

Contoured front bucket seats hold driver and passenger firmly in place, yet the deeper seat configuration provides individual comfort.

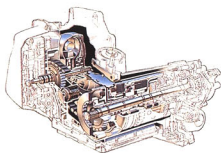


Power controls on the center console allow precise adjustment of the lumbar support movement to the exact preferred height position.

New rear seating is more comfortable with an optimum seatback angle of 27° additional legroom, and separate rear-compartment fan and directional adjustments for the climate control.

SEVILLE STS · PERFORMANCE & TECHNOLOGY

An electronically controlled transmission with viscous converter clutch manages engine torque for smooth shifting.

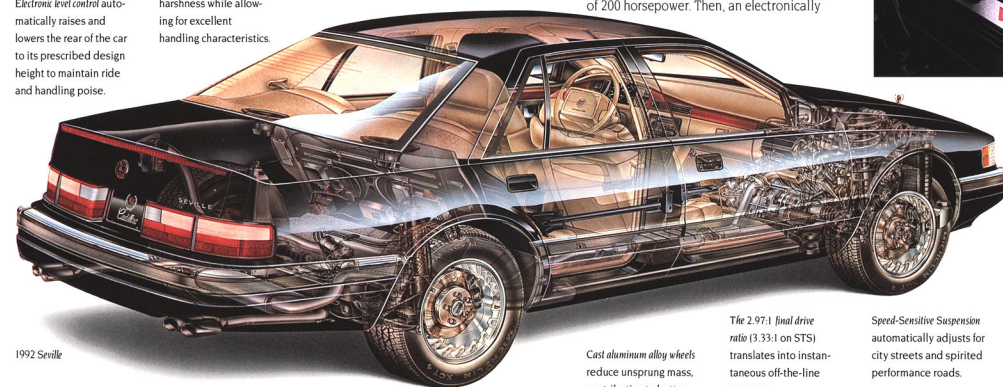


Dual platinum-tipped spark plugs have an extended useful life of 100,000 miles.



Improved structure provides a 40% increase in body stiffness. This contributes to better isolation from road harshness while allowing for excellent handling characteristics.

Electronic level control automatically raises and lowers the rear of the car to its prescribed design height to maintain ride and handling poise.



New dynamics in performance technology.

Acceleration is instantaneous. Electronically controlled shifts are virtually undetectable. Changes in speed trigger precise adjustments in suspension. The integrity of the body structure materially enhances confidence and control. The new Seville STS.

At the core of its electronically integrated powertrain is a 4.9 liter V8, providing the thrust of 200 horsepower. Then, an electronically

controlled transmission manages this force into a seamless, uninterrupted surge of acceleration. Reacting to changes in velocity and lateral forces, a Speed-Sensitive Suspension adapts handling dynamics automatically. The added strength and rigidity of the all-new body shell also assures a solid feel.



The 4.9 liter V8 with sequential port fuel injection generates up to 275 lbs.-ft. of torque over a wide power band for spirited acceleration in both city and highway driving.

The 2.97:1 final drive ratio (3.33:1 on STS) translates into instantaneous off-the-line response.

Cast aluminum alloy wheels reduce unsprung mass, contributing to better tire contact.

Speed-Sensitive Suspension automatically adjusts for city streets and spirited performance roads.

New Michelin® touring tires (Goodyear® Eagle GA tires on STS) provide all-seasons traction.

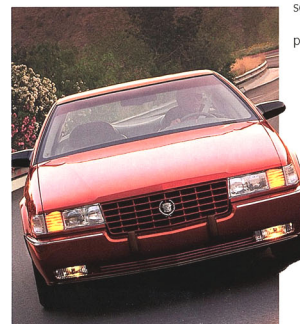


An advanced Speed-Sensitive Suspension that has a feel for the way you drive.

This adaptive, fully independent suspension system monitors your driving four hundred times per second. The struts, specifically tuned to the STS, automatically adapt to changes in vehicle speed and lateral acceleration. When you exercise the open-road capabilities

of its 200 horsepower V8, this computer-controlled suspension shifts into the touring mode for a taut ride and spirited handling. Twists and turns over 0.25 G's hold the suspension in its firmest setting for stable cornering.

At moderate speeds, the suspension balances controlled road manners with refined isolation. In town, it adjusts into the comfort mode to seemingly pave the potholes as you go.



SEVILLE STS · COMFORT & CRAFTSMANSHIP



Sound beginning.
The hushed acoustics start with this lifelike binaural head that connects to the most current digital recording technology. It creates a computer soundprint of the interior, which helps isolate and eliminate unwanted noise.



The integration of driver and automobile.

Every placement, every contour, every control has been human-engineered to make you more comfortable driving the Seville STS the way it was intended to be driven.

The teardrop slope of the instrument panel flows with the horizon, orienting you to the road. Analog gauges inform at a glance.

Ergonomically clustered controls grant instant access.

Extraneous noise is minimized via double-sealed doors, flush-mounted front and rear glass and wind-cheating aerodynamics. But the driving experience remains immediate, never remote—as you hear



the muted notes of the quad exhaust outlets.

Soft-touch controls provide reassuring tactile feedback.

The science of comfort.

Engineers joined with medical researchers to create new front seats that provide long-distance comfort and support even during spirited driving. Using infrared heat imaging, they isolated fatiguing pressure points of the human body and then shaped the seat to relieve them. The seat took on an anthropometric contour that parallels the human spine. Side bolsters added reassuring lateral support.

Dual-Constant springs were invented. This innovation simultaneously provides cushioned support while allowing driver and passenger to move with ride motions rather than against them.

And the four-way power lumbar system allows you to pinpoint the height and depth of the support you need.

The optional bi-level heated front seats provide more rapid comfort in cold weather and can even help to soothe sore back muscles.



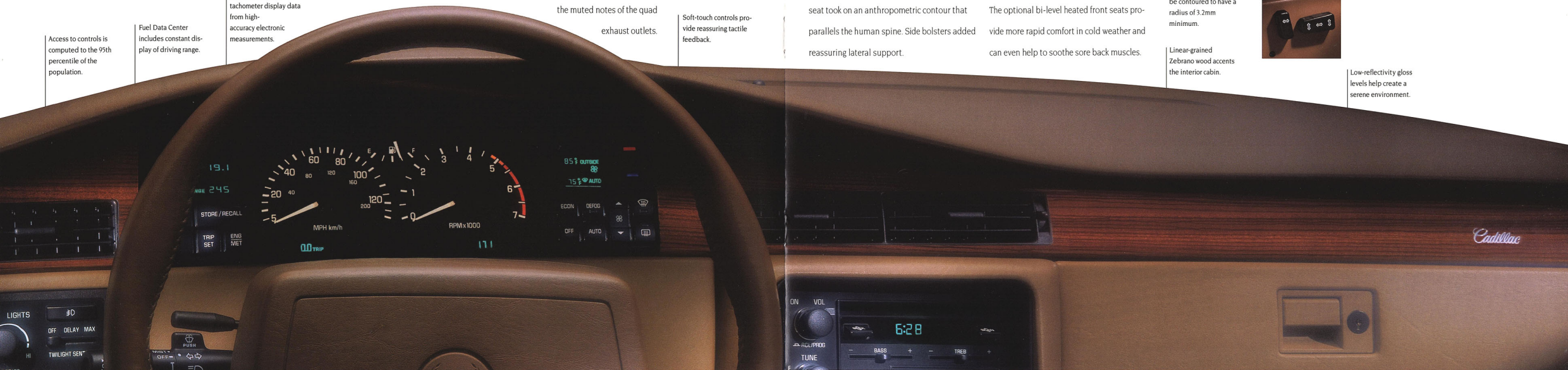
Engineered for export.
European safety standards require that the edge of any interior surface contacted by a 165mm ball representing a head form, must be contoured to have a radius of 3.2mm minimum.

Linear-grained Zebrano wood accents the interior cabin.

Instinctive reaction.
You are instantly familiar with the operation of the new "metaphoric" seat controls. Move them any of six ways and the seat moves in tandem.



Low-reflectivity gloss levels help create a serene environment.





SEVILLE STS SAFETY

The systems approach to safety.

The Seville STS is designed not only to help protect you in the event of a collision, its sophisticated systems are designed to help you avoid that collision in the first place. The electronically controlled V8 powertrain helps you pass and merge in critical situations with reassuring dispatch. A standard anti-lock braking system combines with larger brake pads and rotors this year to help prevent wheel lock-up, thus better maintaining steering control on slippery surfaces or during hard braking on dry pavement.

New Goodyear Eagle GA all-seasons radial tires, specially tuned to the STS, are designed to complement its taut, adaptive Speed-Sensitive Suspension for tenacious traction characteristics.

Standard anti-lock brakes help take the panic out of panic stops, by allowing you to maintain maximum steering control while braking.

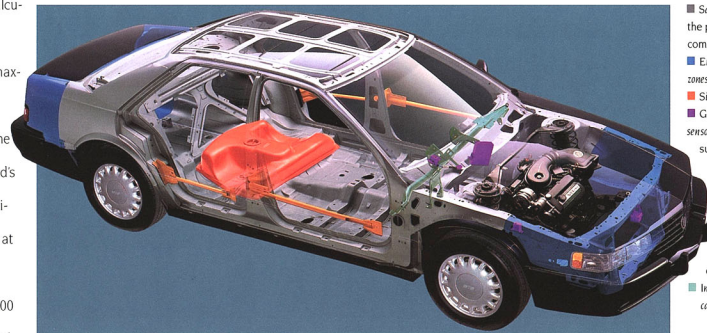
The physics behind building a safer automobile.

The structural integrity of the new Seville STS was created from a thorough understanding of the physics behind automotive safety, a science in which forces are carefully calculated and managed. Loads are channeled and dissipated to maximize occupant protection. The Seville STS incorporates the experience of some of the world's leading automotive safety engineers. Their work is conducted at the largest automotive testing facility of its kind where over 400 automobiles are barrier-crashed

each year and their results are analyzed. As a result of this attention to safety, the Seville STS meets or exceeds all pertaining American, European and Japanese safety standards. In fact, the Seville design has successfully

completed the dynamic side-impact testing even though this is not a government requirement until the 1997 model year for all car lines. Its side-guard door beams are part of a rigid safety cage that surrounds your family. Front

impact of sufficient force in 1/50th of a second. Less than an eye blink later (within 1/20th of a second), the driver's-side Supplemental Inflatable Restraint System (air bag) inflates and distributes stopping loads over your upper

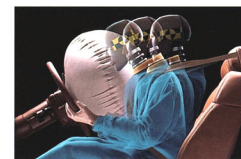


- Safety cage protects the passenger compartment.
- Energy-absorbing crush zones.
- Side-guard door beams.
- Gold-plated air-bag sensor contacts provide superior conductivity.
- The fuel tank of the Seville is placed forward of the rear wheels and suspension for protection in a collision.
- Instrument panel cross car beam

Designed to be used with the safety belt system, the driver's-side air bag has an inflation rate specially engineered for your protection. The Hybrid III dummy responds with bio-mechanical accuracy to assure that the air bag in your STS meets all federal standards. Models of this lifelike stand-in were tested representing the 5th, 50th and 95th percentile of the population, going far beyond federal requirements.



New height-adjustable front shoulder belts accommodate a wide size range of drivers and passengers comfortably.



and rear crush zones help absorb collision energy to reduce forces on vehicle occupants during a collision. Sensors that are gold-plated for superior conductivity and durability can detect a frontal

body. The air bag, designed to be used with the safety belts, helps reduce the chance of injury. Even the wood accents are sandwiched with aluminum to help control splintering in a collision.

SEVILLE



The challenge was to design a vehicle that could balance the spaciousness and comfort of a five-place luxury automobile with the road performance of a touring sedan. To create an environment of symmetry between passengers and the many road conditions one encounters. Introducing the new Cadillac Seville.

It begins with proven technology that bolsters the automobile's capabilities: electronically

integrated V8 powertrain, Speed-Sensitive Suspension and anti-lock brakes. The solidity and strength of a more rigid body structure.



Inside, Seville brings together refined luxury and organized function. Quality materials.

Thoughtfully placed controls. And room for everything except compromise.



SEVILLE • QUALITY & SPECIFICATIONS

America's highest quality honor.

Cadillac's commitment to quality helped it win

a 1990 Malcolm Baldrige National Quality

Award, America's highest quality honor.

The Seville development team utilized a qual-

ity process called "simultaneous engineering."

This cross-discipline approach combined the

efforts of engineers, designers, assemblers,

suppliers and dealers. Guiding their work was a

single focus: the voice of the customer. Hun-

dreds of luxury car owners provided their

inputs to the design throughout its develop-

ment. This ongoing dialog helped spur

continuous improvement before the first

1992 Seville was ever offered for sale.

Cadillac also listened to the voice of the tal-

ented men and women who craft the Seville.

Using actual machinery and conditions at

Cadillac's exclusive Assembly Line Effective-

ness Center (ALEC), prior to production, they

took part in a development program to help

create a design that can be built with consis-

tently high quality.



When the "simultaneous engineering" team reduced the number of components, they also increased the quality of fit and finish. Seville STS shown.

1992 SEVILLE® SELECTED STANDARD FEATURES

CADILLAC-EXCLUSIVE TOTAL OWNERSHIP PRI- ORITY SERVICES†

Cadillac 4-year/50,000-mile Gold Key Bumper to Bumper Warranty with 6-year/100,000-mile rust-through protection*. There is no deductible.

Cadillac Consumer Relations Center—24-hour toll-free assistance

Gold Key Delivery System
Cadillac Roadside Service®

COMFORT AND CONVENIENCE

Acoustic improvements include full-perimeter dual door seals and 5mm thick side glass

Air distribution duct, rear compartment, on back of center console—with five-position blower control, dual adjustable outlets

Climate control, electronic with constant outside temperature display and two-way solar sensor

Mirror, illuminated—passenger visor vanity, with variable intensity lighting

Retained accessory power
Windows—Soft-Ray® tinted glass

SEATING/INTERIOR
Armrest, front-seat center (with storage) and rear-seat center

Garage door opener retainer—with sunglass storage compartment

Interior trim, Zebano wood—instrument panel and door fronts

Reading lamps, overhead siderail, four—with "on-lens" switching

Seats, knit cloth: front bucket with six-way seat adjusters, manual seat

reciners, adjustable headrests, and seatback pockets; rear with integral headrests

Gold Key Delivery System
Cadillac Roadside Service®

COMFORT AND
CONVENIENCE

Computer diagnostics

Cruise control

Defogger, electric rear window

Defogger, front side windows

Door locks—power

Driver information center

Illuminated entry system

Instrument cluster, digital

Luggage compartment lid release and pull-down—power

Windows—Soft-Ray® tinted glass

SEATING/INTERIOR

Armrest, front-seat center (with storage) and rear-seat center

Standard cloth seating—Seville.

Mirrors, heated outside rearview—power

Steering, Tilt-Wheel™, adjustable—leather-trimmed rim

Trip odometer

Twilight Sentinel®

Windows, power; includes express-down driver window

Windshield wiper, controlled cycle

APPEARANCE AND
PROTECTION

Brake/transmission shift interlock (apply brake pedal to shift from park)

Child safety lockout, rear doors—manual

Child safety belt restraint for front passenger and rear outboard seats

Cornering lamps, front

Galvanized steel, two-sided, in all body and underbody panels (except roof)

Headlamps, composite tungsten halogen

Paint finish—clearcoat

Safety belts, manual lap/shoulder: for all outboard positions



Standard Delco Electronics AM stereo**FM stereo radio with Dolby, auto-reverse cassette tape player, and six speakers on STS



Available Delco/Bose Gold Series AM stereo**FM stereo radio with combined Dolby, auto-reverse cassette tape and compact disc players.

Supplemental Inflatable Restraint System (air bag) in steering wheel hub

Theft-deterrent system, PASS Key®

ENGINE/CHASSIS

4.9 liter V8 with sequential port fuel injection

Alternator, 140-ampere

Anti-lock brake system

Battery—Delco Freedom® III

Electronic level control

Exhaust system, stainless steel—from manifold back

Quad exhaust outlets

Front-wheel drive

Standard cloth seating—Seville.

Integral body-frame

Oil life indicator

Parking brake release, automatic—with single stroke apply

Spare tire—compact

Spark plugs, dual platinum-tipped—for 100,000-mile service intervals

Speed-Sensitive Suspension

Tires, Michelin XGT4 P225/60R16 touring blackwall radials

Transmission, four-speed automatic—with electronic shift control, overdrive and Cadillac-exclusive viscous converter clutch

SEVILLE STS

Additional standard features:

COMFORT AND
CONVENIENCE

Mirrors, illuminated—driver/passenger visor vanity, with variable intensity lighting

SEATING/INTERIOR

Console, full front floor—with Zebano wood trim and shift lever

Doors, all four—Zebano wood trim across entire width

Floor mats, front and rear

Seats, 12-way power front bucket (including four-way lumbar adjustment); Nuance leather seating areas with perforated leather inserts; power seat recliners; manual articulating headrests, front seatback pockets



Available express-open Astorroof (reduces headroom slightly).

CONTROLS AND
INSTRUMENTATION

Instrument cluster—analog

Mirrors, heated outside rearview with blue-tinted glare-resistant glass and breakaway design—power

APPEARANCE AND
PROTECTION

Bumper guards, front—black

Deck lid carpet liner

Deck lid lock emblem—gray

Front fascia, body color—with integral fog lamps and wide, slotted air intake

Grille, aerodynamic—body color

Lamp, underhood

Mat, luggage compartment

Moldings, lower body side and rocker—specific

Security package includes remote keyless entry, automatic door locks with central door unlocking and theft-deterrent system

Wreath and crest, bright/gray—flush-mounted on grille

ENGINE/CHASSIS

Speed-Sensitive Suspension—touring version

Steering, fast-ratio—for excellent handling

Tires, Goodyear Eagle GA P225/60HR16 performance steel-belted blackwall radials

SEVILLE, SELECTED
AVAILABLE FEATURES

Available option package that you may order:

Seville option package ISB†: Deck lid carpet liner

Floor mats, front and rear

Mat, luggage compartment

Mirror, illuminated driver visor vanity

Available features that you may order individually:

COMFORT AND
CONVENIENCE

Mirror, inside rearview—automatic dimming—Electrochromic

SEATING/INTERIOR

Leather seating areas—Nuance

Four-way lumbar adjustments and seat recliners—power; manual articulating headrests† (requires available leather seating areas)

Heated front seats (requires available leather seating areas)

Wheels, 16"x7" cast aluminum alloy specifically designed for each car

Wreath and crest, bright/gray—flush-mounted on grille

CONTROLS AND
INSTRUMENTATION

Analog cluster† with floor shift and full console

Windshield, heated

APPEARANCE AND
PROTECTION

Accent striping—Seville only

License plate mounting, front—no charge

Paint, Firemist

Security package includes remote keyless entry, automatic door locks with central door unlocking and theft-deterrent system†



Available analog instrumentation with floor shift and full console—Seville!

Standard Seville interior, with digital instrumentation column shift and mini-console.

Available analog instrumentation with floor shift and full console—Seville!

Standard Seville interior, with digital instrumentation column shift and mini-console.

Standard Seville interior, with digital instrumentation column shift and mini-console.



*See your dealer for terms of this limited warranty.

†For additional information, please see p. 48.

**Receives C-Quam stereo broadcasts. Most AM stereo stations across the country broadcast in C-Quam, but some do not. Check with your local stations for compatibility in your area.

†Standard on Seville STS

DIMENSIONS

Wheelbase 2819mm/111.0"

Length 5177mm/203.9"

Height 1370.5mm/54.0"

Width 1888mm/74.4"

Tread width front/rear 1546mm/60.9"

Turning diameter (wall-to-wall) 13.2m/43.4'

Curb weight

Seville 1654.6kg/3648 lbs.

Seville STS 1687.8kg/3721 lbs.

Seating capacity front/rear 2/3

Headroom

Front 955mm/37.6" Rear 962mm/37.9"

Legroom

Front 1086mm/42.8" Rear 1003.5mm/39.5"

Hip room

Front 1400mm/55.2" Rear 1462mm/57.6"

Shoulder room

Front 1498mm/59.0" Rear 1472mm/58.0"

Luggage capacity 0.41 cu. m/14.4 cu. ft.

Specifications as of 7-91.

Standard Cadillac-exclusive 16"x7" cast aluminum alloy wheel—Seville (shown top).

Standard Cadillac-exclusive 16"x7" cast aluminum alloy wheel—Seville STS (shown bottom).



ELDORADO TOURING COUPE



CADILLAC
STYLE

A new approach creates a dramatic departure.

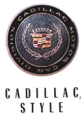
The Eldorado Touring Coupe.

Created from the inside out. Integrated systems of mechanics and electronics work in harmony to provide a total driving experience. For every fraction of a second, computer-controlled driving systems infinitely adapt to changes in driver input.

The Eldorado Touring Coupe's fresh interpretation of grand touring extends inside, where every detail focuses on enhancing your need for control and acknowledging your appreciation of refinement.



ELDORADO TOURING COUPE



A new approach creates a dramatic departure.

The Eldorado Touring Coupe.

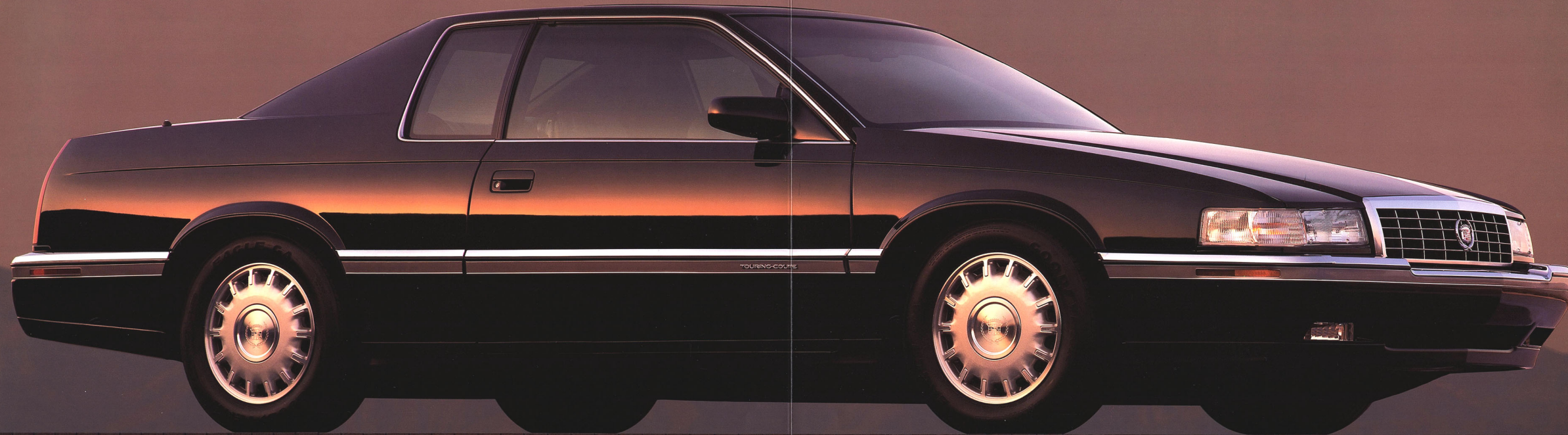
Created from the inside out. Integrated systems of mechanics and electronics work in harmony to provide a total driving experience.

For every fraction of a second, computer-controlled driving systems infinitely adapt to changes in driver input.

The Eldorado Touring Coupe's fresh interpretation of grand touring extends inside, where every detail focuses on enhancing your need for control and acknowledging your appreciation of refinement.



ELDORADO TOURING COUPE



ELDORADO TOURING COUPE

Personal space.

You sense you are in command of an automobile designed around you in a new way. Front seats, sculpted to adjust to your dimensions, help keep you in control no matter what driving situation you might encounter. Within their ergonomic contours, you experience support without confinement. Lumbar supports provide adjustment to the exact preferred height and depth.



Hand-fitted Nuance leather tailors the gathered seating areas of the five-place Eldorado Touring Coupe, while handpolished Zebano wood flows from the instrument panel to the doors and console.

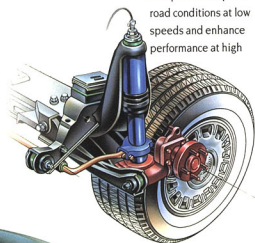


ELDORADO TOURING COUPE • PERFORMANCE & SAFETY

Added stopping power. Advanced anti-lock brakes help you maintain steering control during sudden stops and when braking on any road surface.

Cadillac engineers also added larger rotors and increased lining swept area. In very severe real-world test conditions—"the Los Angeles Brake Schedule"—the brakes exhibited cooler operating temperatures and substantially longer lining life.

Rugged safety cage protected by energy-absorbing crush zones.



The fine line. There is a fine line between a suspension that can isolate occupants from poor road conditions at low speeds and enhance performance at high

speeds. The Eldorado Touring Coupe combines both into one with a Speed-Sensitive Suspension. It automatically adjusts as you drive on highways, city streets and spirited performance roads where control is essential.

100,000-mile dual platinum-tipped spark plugs.

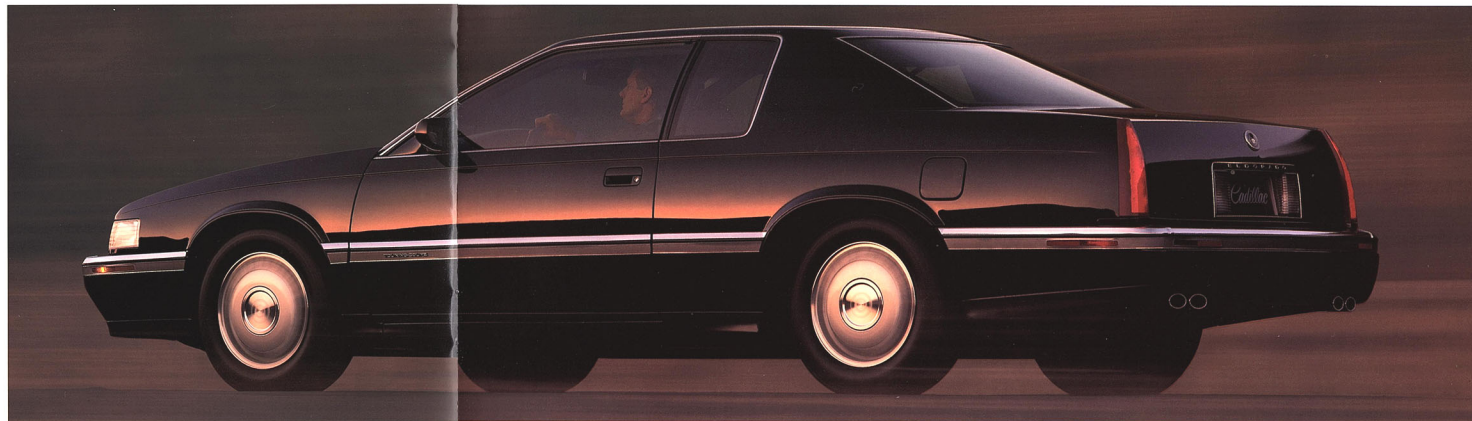


Power management. Continuous retuning results in instantaneous response and seamless shifting. When the transmission engages the viscous converter clutch, this fluidic system enhances smoothness and offers highway efficiency of an EPA estimated 25 mpg highway.

Strike a balance.

The aerodynamic structure of the Eldorado Touring Coupe is the cornerstone of a balanced new approach. The increased strength and solidity of the body allow the car's advanced suspension technology to maximize both ends of the luxury sports coupe spectrum. Handling

dynamics of the Speed-Sensitive Suspension are computer controlled. So stability increases on the open road while the comfort of the ride is actually enhanced in town. The electronically integrated powertrain also eliminates compromise. Performance is computer-synchronized for peak V8 response and



highway efficiency. EPA estimated 25 mpg highway.

The predictability of these driving systems creates a feeling of dynamic safety, a confidence level that the Eldorado Touring Coupe will do what you expect in changing driving situations.

SAFETY FEATURES ON 1992 ALLANTÉ, SEVILLE, ELDORADO, TOURING SEDAN

ACCIDENT AVOIDANCE

Side marker lamps and reflectors

Parking lamps that illuminate with headlamps

Four-way hazard warning flashers

Backup lamps

Center high-mounted stop lamp

Directional signal control with lane-change feature (turn signal lamp)

Windshield defroster, washer and multi-speed wipers

Inside manual day/night rearview mirror

Outside left and right rearview mirrors

Brake system with dual master cylinder and warning light

Starter safety switch

Dual-action hood latch

Low-glare finish on inside windshield moldings, wiper arms and blades, metallic steering wheel surfaces

Illuminated heater and defroster controls

Illuminated windshield wiper and washer controls (Allanté)

Tires with built-in tread wear indicators

Safety road wheel rims

ELDORADO TOURING COUPE

A refined difference.

Touch. Appearance. Lighting. Color. The Eldorado Touring Coupe integrates these elements in a driver-focused environment.

Glove-soft leather. Linear-grained Zebrano wood. Backlit analog instrumentation. All come together in a handcrafted invitation to experience an automobile whose character is totally driven by yours.

From the leather-sewn gear selector, offset at a natural 20° angle, to the front seats sculpted specifically to adjust to your dimensions.

High-performance seating with the accent on comfort.

Beneath the gathered leather seating areas are proprietary advances in the science of human engineering.

Lumbar adjusters bring support relief to back muscles. You pinpoint the height and depth of the support you need, depending on the individuality of your

physique and the duration of your journey.

New Dual-Constant springs enhance the harmony you feel with the road. While the first set of springs supports you, the second set moves you in unison with ride motions. During spirited cornering or evasive maneuvering, the contoured side bolsters help keep you stable and in control. And to further help keep you

securely held in place, the safety belt buckle moves with the power seat along its accommodat-

ing 200 mm track.



The four-way power lumbar control adjusts the bolster up or down and in or out for variable support that helps combat fatigue.

COMFORT & CRAFTSMANSHIP



A new perspective.

It is new from the inside out. Yet the rapport between you and the Eldorado Touring Coupe is immediate.

Essential controls are thoughtfully placed to allow for an unobstructed view. They switch on and off with uniform consistency and reassur-

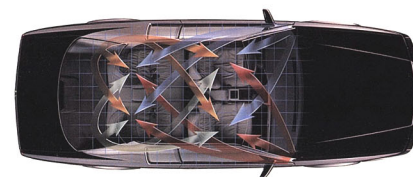
ing reliability – proven in tests that spanned a 160° temperature range.

As the needles of the analog gauges climb, the flowing slope of the instrument panel merges with the horizon and draws your focus to the road ahead.

Interior surfaces share an understated matte finish and matching grain. The one shining exception: the hand-finished Zebrano wood.



Available Delco/Bose system now includes both compact disc and cassette tape players and is custom-equalized for the Eldorado interior.



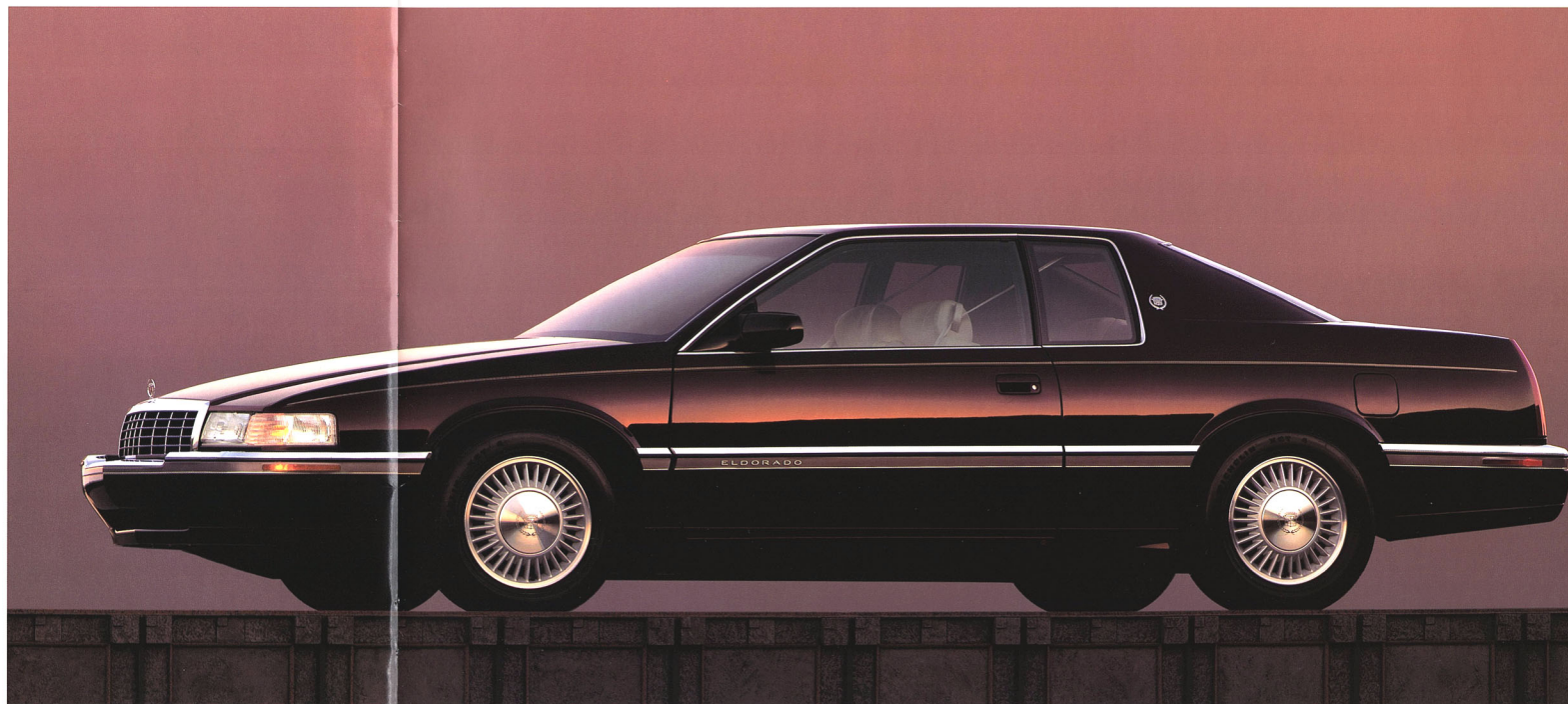
Renowned Delco/Bose sound systems are standard or available on all front-drive Cadillacs. Precise equalization creates optimum sound for individual Cadillac interiors.

E L D O R A D O

The idea was simple.

Take a formidable luxury coupe. Apply an impressive array of advanced new technologies. And give it sophisticated comfort. The result is the new Cadillac Eldorado.

Its electronically integrated engine and transmission transport you smoothly. Speed-Sensitive Suspension lets you approach winding pavement with confidence. Inside, controls are scientifically placed. Optional lumbar support helps sculpt the available leather seating areas to the contours of your body. Technology not for its own sake, but for yours.



ELDORADO QUALITY & SPECIFICATIONS



Right the first time.

All computer-controlled functions are constantly monitored by one of the world's most sophisticated on-board vehicular computer

diagnostics systems.

This fault-tolerant system automatically compensates for certain malfunctions so that you

can continue on your journey in most cases until repairs can be made. Once at your Cadillac dealer, it can be an invaluable aid in helping to have your Cadillac fixed correctly the first time. The service technician accesses the system through the driver information center on the instrument panel. A digital readout guides the technician to the exact area requiring attention. Cadillac's system even includes a "snapshot" capability. With this "photographic memory," elusive intermittent problems are recorded to help in quick diagnosis. After the necessary operations are completed, the technician again uses the system to verify that the work has been successfully performed.

1992 ELDORADO® SELECTED STANDARD FEATURES

CADILLAC-EXCLUSIVE TOTAL OWNERSHIP PRIORITY SERVICES*
Cadillac 4-year/50,000-mile Gold Key Bumper to Bumper Warranty and 6-year/100,000-mile rust-through protection* There is no deductible.

Cadillac Consumer Relations Center—24-hour toll-free assistance.
Gold Key Delivery System
Cadillac Roadside Service.

COMFORT AND CONVENIENCE

Acoustic improvements include full-perimeter dual door seals and 5mm thick side glass.

Air distribution duct, rear compartment, on back of center console—with five-position blower control, dual adjustable outlets.

Body computer module.
Climate control, electronic—with constant outside temperature display and two-way solar sensor.

Mirror, illuminated—passenger visor vanity, with variable intensity lighting.

Retained accessory power.
Windows—Soft-Ray® tinted glass.

SEATING/INTERIOR
Armrest, front-seat center (with storage) and rear-seat center.

Garage door opener retainer—with sunglass storage compartment.

Interior trim, Zebano wood—instrument panel and door fronts.

Reading lamps, front- and rear-seat.

Cornering lamps, front.
Bumper Warranty and 6-year/100,000-mile rust-through protection* There is no deductible.

Cadillac Consumer Relations Center—24-hour toll-free assistance.

Gold Key Delivery System
Cadillac Roadside Service.

COMFORT AND CONVENIENCE

Acoustic improvements include full-perimeter dual door seals and 5mm thick side glass.

Air distribution duct, rear compartment, on back of center console—with five-position blower control, dual adjustable outlets.

Body computer module.
Climate control, electronic—with constant outside temperature display and two-way solar sensor.

Mirror, illuminated—passenger visor vanity, with variable intensity lighting.

Retained accessory power.
Windows—Soft-Ray® tinted glass.

SEATING/INTERIOR
Armrest, front-seat center (with storage) and rear-seat center.

Garage door opener retainer—with sunglass storage compartment.

Interior trim, Zebano wood—instrument panel and door fronts.

Reading lamps, front- and rear-seat.

Cornering lamps, front.
Bumper Warranty and 6-year/100,000-mile rust-through protection* There is no deductible.

APPEARANCE AND PROTECTION

Brake/transmission shift interlock (apply brake pedal to shift from park).

Child safety belt restraint for front passenger and rear outboard seats.

Galvanized steel, two-sided, in all body and underbody panels (except roof).

Headlamps, composite tungsten halogen.

Paint finish—clearcoat.
Safety belts, manual lap/shoulder, for all outboard positions.

Supplemental Inflatable Restraint System (air bag) in steering wheel hub.

Theft-deterrent system, PASS Key®.

ENGINE/CHASSIS
4.9 liter V8 with sequential port fuel injection.

Alternator, 140 ampere.
Anti-lock brake system.

Battery—Delco Freedom® II.

Electronic level control.
Exhaust system, stainless steel—from manifold back.

Front-wheel drive.
Integral body-frame.

Oil life indicator.
Parking brake release, automatic with single stroke apply.

Spare tire—compact.
Spark plugs, dual platinum-tipped—for 100,000-mile service intervals.

Speed-Sensitive Suspension.

Tires, Michelin XGT4 P225/60R16 touring black-wall radials.

Transmission, four-speed automatic—with electronic shift control, overdrive and Cadillac-exclusive viscous converter clutch.

ELDORADO TOURING COUPE
Additional standard features:

Standard Delco Electronics AM stereo**/FM stereo radio with Dolby® auto-reverse cassette tape player.

Available express-open Astor roof (reduces headroom slightly).

COMFORT AND CONVENIENCE
Mirrors, illuminated—driver/passenger visor vanity with variable intensity lighting.

SEATING/INTERIOR
Assist handles.
Console, full floor—with Zebano wood trim and shift lever.

Floor mats, front and rear.
Seats, five-passenger, 12-way power front bucket (including four-way lumbar adjustment); Nuance leather seating areas with specific gathered appearance; power seat recliners, manual articulating front headrests.

CONTROLS AND INSTRUMENTATION
Instrument cluster—analogue.

Mirrors, heated outside rearview with blue-tinted glare-resistant glass and breakaway design—power.

APPEARANCE AND PROTECTION
Deck lid carpet liner.

Deck lid lock emblem—gray.

Fog lamps—mounted into front fascia.



Available express-open Astor roof (reduces headroom slightly).

COMFORT AND CONVENIENCE
Mirrors, illuminated—driver/passenger visor vanity with variable intensity lighting.

SEATING/INTERIOR
Assist handles.
Console, full floor—with Zebano wood trim and shift lever.

Floor mats, front and rear.
Seats, five-passenger, 12-way power front bucket (including four-way lumbar adjustment); Nuance leather seating areas with specific gathered appearance; power seat recliners, manual articulating front headrests.

CONTROLS AND INSTRUMENTATION
Instrument cluster—analogue.

Mirrors, heated outside rearview with blue-tinted glare-resistant glass and breakaway design—power.

APPEARANCE AND PROTECTION
Deck lid carpet liner.

Deck lid lock emblem—gray.

Fog lamps—mounted into front fascia.

Lamp, underhood.
Mat, luggage compartment.

Security package: Includes remote keyless entry, automatic door locks with central door unlocking and theft-deterrent system.

Weath and crest flush-mounted on grille.

ENGINE/CHASSIS
Speed-Sensitive Suspension—touring version.
Steering, fast-ratio—for enhanced handling.

Tires, Goodyear Eagle GA P225/60HR16 performance steel-belted blackwall radials.

ELDORADO® SELECTED AVAILABLE FEATURES
Available option package that you may order.

Eldorado option package ISB®.

Deck lid carpet liner.
Floor mats, front and rear.
Lamp, underhood.
Mat, luggage compartment.
Mirror, illuminated driver visor vanity.

APPEARANCE AND PROTECTION
Accent striping—Eldorado only.
License plate mounting, front—no charge.
Paint, Firemist.

Standard Seating—Eldorado.

Selected available features that you may order individually:

COMFORT AND CONVENIENCE
Mirror, inside rearview—automatic dimming—Electrochromic.

SEATING/INTERIOR
Leather seating areas—Nuance.

Four-way lumbar adjustments and seat recliners—power; manual articulating headrests (requires available leather seating areas).

Heated front seats (requires available leather seating areas).

CONTROLS AND INSTRUMENTATION
Analog cluster¹ with floor shift and full console.

Windshield, heated.

Selected available features that you may order individually:

COMFORT AND CONVENIENCE
Mirror, inside rearview—automatic dimming—Electrochromic.

SEATING/INTERIOR
Leather seating areas—Nuance.

Four-way lumbar adjustments and seat recliners—power; manual articulating headrests¹ (requires available leather seating areas).

Heated front seats (requires available leather seating areas).

CONTROLS AND INSTRUMENTATION
Analog cluster¹ with floor shift and full console.

Windshield, heated.

APPEARANCE AND PROTECTION
Accent striping—Eldorado only.
License plate mounting, front—no charge.
Paint, Firemist.

Standard Seating—Eldorado.

Selected available features that you may order individually:

COMFORT AND CONVENIENCE
Mirror, inside rearview—automatic dimming—Electrochromic.

SEATING/INTERIOR
Leather seating areas—Nuance.

Four-way lumbar adjustments and seat recliners—power; manual articulating headrests¹ (requires available leather seating areas).

Heated front seats (requires available leather seating areas).

CONTROLS AND INSTRUMENTATION
Analog cluster¹ with floor shift and full console.

Windshield, heated.

Standard interior, Eldorado—with digital instrumentation, column shift and mini-console.

Available analog instrumentation with floor shift and full console—Eldorado; standard on Eldorado Touring Coupe.

Standard interior, Eldorado—with digital instrumentation, column shift and mini-console.

Available analog instrumentation with floor shift and full console—Eldorado; standard on Eldorado Touring Coupe.

Standard interior, Eldorado—with digital instrumentation, column shift and mini-console.

Available analog instrumentation with floor shift and full console—Eldorado; standard on Eldorado Touring Coupe.

Standard interior, Eldorado—with digital instrumentation, column shift and mini-console.

Available analog instrumentation with floor shift and full console—Eldorado; standard on Eldorado Touring Coupe.

Standard interior, Eldorado—with digital instrumentation, column shift and mini-console.

Available analog instrumentation with floor shift and full console—Eldorado; standard on Eldorado Touring Coupe.

Standard interior, Eldorado—with digital instrumentation, column shift and mini-console.

Available analog instrumentation with floor shift and full console—Eldorado; standard on Eldorado Touring Coupe.

Standard interior, Eldorado—with digital instrumentation, column shift and mini-console.

Available analog instrumentation with floor shift and full console—Eldorado; standard on Eldorado Touring Coupe.

Standard interior, Eldorado—with digital instrumentation, column shift and mini-console.

Available analog instrumentation with floor shift and full console—Eldorado; standard on Eldorado Touring Coupe.



Standard interior, Eldorado—with digital instrumentation, column shift and mini-console.

Available analog instrumentation with floor shift and full console—Eldorado; standard on Eldorado Touring Coupe.

Standard interior, Eldorado—with digital instrumentation, column shift and mini-console.

Available analog instrumentation with floor shift and full console—Eldorado; standard on Eldorado Touring Coupe.

Standard interior, Eldorado—with digital instrumentation, column shift and mini-console.

Available analog instrumentation with floor shift and full console—Eldorado; standard on Eldorado Touring Coupe.

Standard interior, Eldorado—with digital instrumentation, column shift and mini-console.

Available analog instrumentation with floor shift and full console—Eldorado; standard on Eldorado Touring Coupe.

Standard interior, Eldorado—with digital instrumentation, column shift and mini-console.

Available analog instrumentation with floor shift and full console—Eldorado; standard on Eldorado Touring Coupe.

Standard interior, Eldorado—with digital instrumentation, column shift and mini-console.

Available analog instrumentation with floor shift and full console—Eldorado; standard on Eldorado Touring Coupe.

Standard interior, Eldorado—with digital instrumentation, column shift and mini-console.

Steering
Eldorado.....power-assisted rack and pinion; 16.5:1 ratio
Eldorado Touring Coupe.....power-assisted rack and pinion; 15.6:1 ratio

Brakes.....Bosch III® anti-lock; power four-wheel disc
Wheels.....16" x 7" cast aluminum alloy specifically designed for each car

Tires
Eldorado.....P225/60R16 Michelin touring steel-belted all-seasons blackwall radials

Eldorado Touring Coupe.....Goodyear Eagle GA P225/60HR16 performance steel-belted all-seasons blackwall radials

DIMENSIONS

Wheelbase.....2743mm/108.0"

Length.....5136mm/202.2"

Height.....1370.5mm/54.0"

Width.....1920mm/75.6"

Tread width
Front.....1546mm/60.9"

Rear.....1546mm/60.9"

Turning diameter (wall-to-wall).....12.8m/42.0'

Curb weight
Eldorado.....1634.9kg/3604lbs.

Eldorado Touring Coupe.....1651.1kg/3640lbs.

Seating capacity front/rear.....2/3

Headroom
Front.....960mm/37.8"

Rear.....972mm/38.3"

Legroom
Front.....1082mm/42.6"

Rear.....915mm/36.1"

Hip room
Front.....1468mm/57.8"

Rear.....1416mm/55.8"

Shoulder room
Front.....1478mm/58.2"

Rear.....1463mm/57.6"

Luggage capacity.....0.44cu. m/15.3 cu. ft.

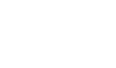
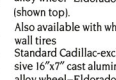
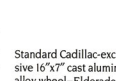
Specifications as of 7-91

*See your dealer for terms of this limited warranty.
†For additional information, please see p. 48.

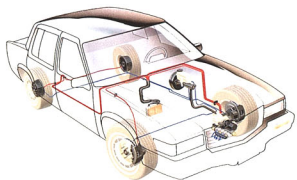
**Receives C-Quam® stereo broadcasts. Most AM stereo broadcasts across the country broadcast in C-Quam® but some do not. Check with your local stations for compatibility in your area.

¹Standard on Eldorado Touring Coupe.

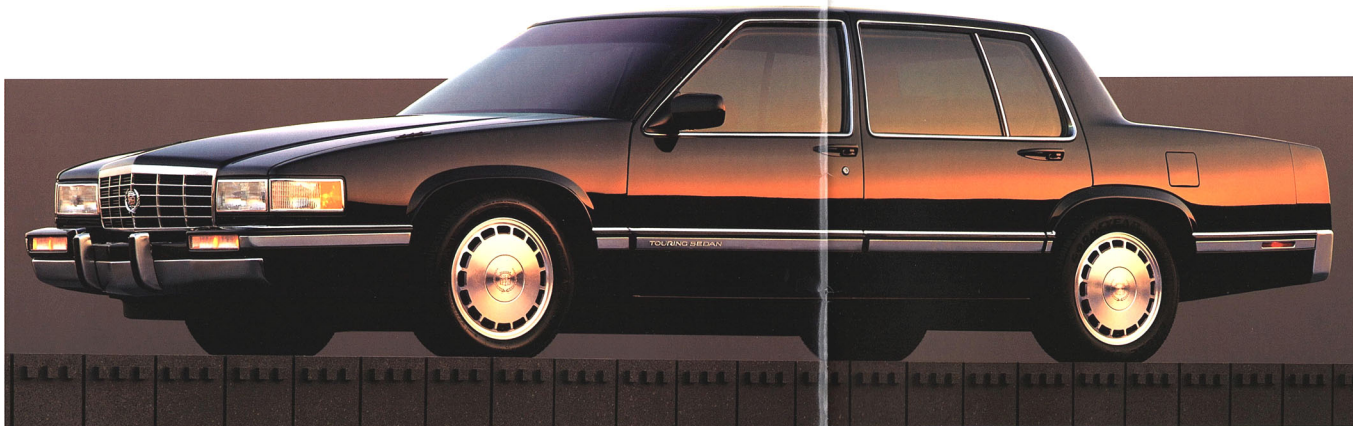
Standard Cadillac-exclusive 16" x 7" cast aluminum alloy wheel—Eldorado (shown top).
Also available with white-wall tires.
Standard Cadillac-exclusive 16" x 7" cast aluminum alloy wheel—Eldorado Touring Coupe (shown bottom).



CADILLAC TOURING SEDAN



Advanced Traction Control. Now the prowess of anti-lock brakes is harnessed up to 30 mph for acceleration. When you accelerate on a slippery surface, Traction Control automatically pulses the brakes to limit wheel slip for extraordinary all-weather performance.



The six-passenger Cadillac Touring Sedan can handle a canyon switchback or an impromptu business meeting with equal agility. The Touring Sedan achieves this precise balance with some of the most advanced technology on the road today. Traction Control. Anti-lock brakes. An electronically integrated V8 powertrain.

Speed-Sensitive Suspension and driver's-side Supplemental Inflatable Restraint System (air bag). All standard. This advanced approach applies to comfort as well. The new front seats, for instance, scientifically provide back comfort in such a revolutionary way that they are patented.



The balance of power and refinement. The electronically controlled 4.9 liter V8 engine and four-speed automatic transmission produce instantaneous acceleration and virtually undetectable shifts.

Functional hand-grips encourage you to exercise the fast-ratio power steering.



Distinction follows function. The forged 16" alloy wheels reduce unsprung mass for lively response. Goodyear Eagle GA tires provide dry-pavement traction and wet-weather adhesion.



Adaptive handling dynamics. Speed-Sensitive Suspension automatically adjusts the fully independent suspension to changes in vehicle speed and lateral acceleration. The result: superb road isolation in town, spirited handling on the open road.

CADILLAC TOURING SEDAN



The exclusive Cadillac Touring Sedan interior shown with American Walnut accents and Beechwood ultra-soft leather seating areas.

A new dimension in full-size luxury touring.

The Cadillac Touring Sedan allows you to indulge your passion for driving, yet cater to your passengers with six-passenger comfort and spaciousness. With the patented split-

frame design, you custom-fit the driver's seat to your individual physique and personal preference. The integral lumbar bolster firmly reminds you of the car's long-distance touring capabilities. Craftsmen hand-fit ultra-soft

leather to the new contoured seating areas, which are tailored with French seamwork. American walnut frames the interior.

1992 CADILLAC TOURING SEDAN SELECTED STANDARD FEATURES

CADILLAC-EXCLUSIVE TOTAL OWNERSHIP PRIORITY SERVICES¹

Cadillac 4-year/50,000-mile Gold Key Bumper to Bumper Warranty and 6-year/100,000-mile rust-through protection.* There is no deductible Cadillac Consumer Relations Center Gold Key Delivery System Cadillac Roadside Service.



Available Delco/Bose Gold Series Sound System with Dolby cassette player.



Available Delco/Bose Gold Series Sound System with AM stereo**/FM stereo radio and compact disc player.

Not shown: standard Delco AM stereo**/FM stereo radio with Dolby cassette player and five-band graphic equalizer.

COMFORT AND CONVENIENCE

Climate control, electronic with two-way solar sensor and additional duct for rear compartment

Door locks, automatic with central unlocking EZ-KOOLSM solar-control glass

Mirror, inside rearview-automatic dimming-Electrochromic

SEATING/INTERIOR Armrest, front center (with storage) and rear center Interior trim-American walnut accents

Seats: six-passenger, dual-comfort 45/55 split-frame front (three-passenger); Beechwood ultra-soft leather seating areas with French seams; six-way driver and passenger power seat adjusters and recliners; front seatback pockets; separate "sport" headrests

CONTROLS AND INSTRUMENTATION

Steering, Tilt-WheelSM, adjustable with comfort hand grips and leather-trimmed rim

Computer diagnostics

Cruise control

Door locks-power

Fuel data center

Illuminated entry system

Luggage compartment lid release-power

Mirrors, outside rearview-power, with foldaway design

Twilight SentinelSM

Windows, power, includes express-down driver window

APPEARANCE AND PROTECTION

Brake/transmission shift interlock (apply brake pedal to shift from park)

Child safety lockout, for power windows and rear doors

Child safety-belt restraint for front passenger and rear outboard seats

Cornering lamps, front

Door edge guards

Galvanized steel, two-sided, in body and underbody panels

Safety belts, manual lap/shoulder: driver, front-passenger and outboard rear-seat positions

Supplemental Inflatable Restraint System (air bag) in steering wheel hub

Theft-deterrent system, PASS KeySM

ENGINE/CHASSIS

4.9 liter V8 with sequential port fuel injection

Anti-lock brake system

Electronic level control

Front-wheel drive

Performance final drive ratio (effective): 2.97:1

Spark plugs, dual platinum-tipped-for 100,000-mile service intervals

Speed-Sensitive Suspension-touring version for enhanced handling

Traction Control

Transmission, four-speed automatic-with electronic shift control, overdrive and Cadillac-exclusive viscous converter clutch

1992 CADILLAC TOURING SEDAN SELECTED AVAILABLE FEATURES

Available option packages that you may order

Option package ISB

Luggage compartment lid, pull-down-power

Mat, luggage compartment

Mirrors, illuminated-driver and passenger visor vanity, with variable-intensity lighting

Cold-weather package including heated windshield and engine block heater

*See your dealer for terms of this limited warranty.



Option package ISC (includes package ISB plus:)

Mirror, outside rearview, driver side-Electrochromic power

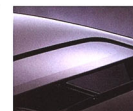
Fuel filler door release-power

Instrument cluster, digital Trumpet horn

Selected available features that you may order individually:

APPEARANCE AND PROTECTION

Paint, Firemist



Available Astrorof (reduces headroom slightly).

Security package including remote keyless entry system and theft-deterrent system

Cold-weather package including heated windshield and engine block heater

*See your dealer for terms of this limited warranty.

SPECIFICATIONS 1992 CADILLAC TOURING SEDAN

Engine 4.9 liter V8 with sequential port fuel injection

Power 200 bhp @ 4100 rpm

Torque 275lbs.ft. @ 3000 rpm

Traction Control Standard

Recommended fuel/tank capacity Unleaded premium/18.0 gallons usable

Transmission Four-speed automatic with electronic shift control, overdrive and Cadillac-exclusive viscous converter clutch

Final drive ratio (effective) 2.97:1

Suspension Speed-Sensitive Suspension, touring version: fully independent with larger front and rear stabilizer bars, rear electronic level control

Steering Power-assisted rack and pinion; 16:53:1 ratio

Brakes Teves Mk IV-3 anti-lock; power front disc/rear drum

Wheels Cadillac-exclusive 16" x 6.5" diamond-finish forged aluminum alloy

Tires P215/60R16 Goodyear Eagle GA blackwall steel-belted radials

DIMENSIONS

Wheelbase 2890mm/113.8"

Length 5284mm/208.0"

Height 1397mm/55.0"

Width 1863mm/73.4"

Tread width

Front 1528mm/60.2" Rear 1523mm/59.9"

Turning diameter (wall-to-wall) 13.4m/44.0"

Curb weight 1645kg/3627 lbs.

Seating capacity front/rear 3/3

Headroom

Front 997mm/39.3" Rear 969mm/38.1"

Legroom

Front 1067mm/42.0" Rear 1108mm/43.6"

Hip room

Front 1369mm/53.9" Rear 1369mm/53.9"

Shoulder room

Front 1498mm/59.0" Rear 1494mm/59.0"

Luggage capacity 0.53 cu. m/18.4 cu. ft.

Specifications as of 7-91.

Forged aluminum alloy wheels.



OWNERSHIP

One owner at a time.

Cadillac and the over 1,600 Cadillac dealers nationwide are dedicated to making your Cadillac as comfortable to own as it is to drive.

No-deductible Bumper to Bumper Warranty.

The Cadillac Gold Key Bumper to Bumper warranty covers every component in every Cadillac

for 4 years/50,000 miles with no deductible.*

The Allanté Assurance Plan extends power-train and major assembly component

protection to 7 years/100,000 miles.

Enhancing the finest roadside service program of its kind.

Cadillac Roadside Service puts a factory-trained service advisor just a toll-free phone call away 24 hours a day, 365 days a year. And, if necessary, a Cadillac technician comes to your assistance in a specially equipped vehicle to provide roadside repairs when you need them

the most—nights, weekends and holidays.

Now this service has been enhanced with free emergency road service and trip-interruption protection for 12 months/12,000 miles. Whether

you have a flat tire, are locked out of your Cadillac, or simply run out of fuel, you can receive assistance at no charge.

In addition, a trip-interruption allowance will reimburse you for hotel, food, even alternative transportation expense necessitated by a covered repair. And for 4 years/50,000 miles,

Cadillac now offers complimentary trip routing information.

Every hour of every day, we listen.

Cadillac's Consumer Relations Center provides 24-hour-a-day customer service to respond to your questions and inquiries, 365 days a year. Call 1-800-458-8006. Allanté owners may call 1-800-ALLANTÉ.

The advantages of SmartLease.

A GMAC SmartLease® lets you conserve your capital for other priorities. Arrangements are

made with your Cadillac dealer and terms are tailored to your personal needs.

We have tried to make this catalog as comprehensive and factual as possible. We reserve the right, however, to make changes at any time, without notice, in prices, colors, materials, equipment specifications, models and availability. Since some information may have been updated since the time of printing, please check with your Cadillac dealer for complete details.

Cadillacs are equipped with engines produced by different operating units of GM, its subsidiaries or suppliers to GM worldwide.

Cadillacs are assembled by different operating units of General Motors, its subsidiaries or suppliers to GM worldwide. Cadillacs incorporate thousands of components

produced by different operating units of GM, its subsidiaries or suppliers to GM worldwide. We sometimes find it necessary to produce Cadillacs with different or differently sourced components than

originally scheduled. All such components have been approved for use in Cadillacs and will provide the quality performance associated with the Cadillac name. Since some options may be unavailable when your vehicle is assembled, we suggest that you verify that your vehicle includes the equipment you ordered, or if there are changes, that they are acceptable to you.

Cadillac regularly sends its dealers useful service bulletins about Cadillac products. Cadillac monitors product performance in the field. We then prepare bulletins for servicing our products better. Now you can get these bulletins, too. Ask your dealer. To get ordering information, call toll-free 1-800-551-4123.

Cadillacs are designed and built to resist corrosion. All body sheet-metal components are warranted against rust-through corrosion for 6 years/100,000 miles. Allanté is covered for 7 years/100,000 miles.

There is no deductible for rust-through repairs. Application of additional rust-inhibiting materials is not required *under like corrosion coverage and none is recommended.* The GM 4-year/50,000-mile Gold Key Bumper to Bumper Warranty covers repairs for any new Cadillac, including labor and parts, to correct any defects in material or workmanship occurring during the warranty period. The complete vehicle will be covered for 4 years or 50,000 miles, whichever comes first (except tires, which are covered by their manufacturer, adjustments, normal maintenance items and battery, which is covered by its own 4-year/50,000-mile prorated warranty). The Cadillac Allanté is backed by the Allanté Assurance Plan—4-year/50,000-mile bumper-to-bumper warranty, including free towing and a portfolio of other services, and 7 years/100,000 miles on powertrain, major assembly components and rust-through protection. There is no deductible on any Cadillac warranty. See your Cadillac dealer for terms of these limited warranties.

GMACTM financing. Financing is done right in the showroom. Terms are tailored to suit your personal needs. You can choose your monthly payment date.

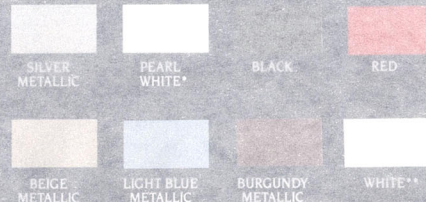
CADILLAC, the CADILLAC emblem, THE ONLY WAY TO TRAVEL IS CADILLAC STYLE, ALLANTÉ, SEVILLE, ELDERADO, CADILLAC ROADSIDE SERVICE, the GM emblem, TWILIGHT SENTINEL, SOFT-RAY and FREEDOM are registered trademarks of the General Motors Corporation. TILT-WHEEL is a trademark of General Motors Corporation. GMAC and SMARTLEASE are registered trademarks of the General Motors Acceptance Corporation. PASS Key is a registered trademark of the Delco Electronics Corporation. ©1991 GM CORP. All Rights Reserved. Litho in U.S.A. 7/91 Buckle Up America!

*Covers every component (except tires, which are covered by their manufacturer; adjustments; normal maintenance items; and battery, which is covered by its own 4-year/50,000-mile prorated warranty). See your dealer for terms and conditions of this limited warranty.



Cadillac Roadside Service provides on-the-spot assistance from more participating dealers than any other roadside service program.

Allanté



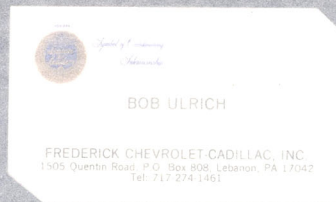
Seville · Seville STS · Eldorado · Eldorado Touring Coupe · Touring Sedan



*Additional cost on convertible.
†Additional cost for Eldorado and Seville.

**Available on convertible only.
††Touring Sedan only.

Availability of colors varies by model.



FREDERICK CHEVROLET-CADILLAC, INC.
1505 Quentin Road, P.O. Box 808, Lebanon, PA 17042
Tel: 717 274-1461

OWNERSHIP

One owner at a time.

Cadillac and the over 1,600 Cadillac dealers nationwide are dedicated to making your Cadillac as comfortable to own as it is to drive.

No-deductible Bumper to Bumper Warranty.

The Cadillac Gold Key Bumper to Bumper warranty covers every component in every Cadillac for 4 years/50,000 miles with no deductible.*

The Allanté Assurance Plan extends power-

train and major assembly component

protection to 7 years/100,000 miles.

Enhancing the finest roadside service program of its kind.

Cadillac Roadside Service puts a factory-trained service advisor just a toll-free phone call away 24 hours a day, 365 days a year. And, if necessary, a Cadillac technician comes to your assistance in a specially equipped vehicle to provide roadside repairs when you need them.

the most—nights, weekends and holidays.

Now this service has been enhanced with free emergency road service and trip-interruption protection for 12 months/12,000 miles. Whether you have a flat tire, are locked out of your

Cadillac, or simply run out of fuel, you can receive assistance at no charge.

In addition, a trip-interruption allowance will reimburse you for hotel, food, even alternative

transportation expense necessitated by a covered repair. And for 4 years/50,000 miles.

Cadillac now offers complimentary trip routing information.

Every hour of every day, we listen.

Cadillac's Consumer Relations Center provides 24-hour-a-day customer service to respond to your questions and inquiries. 365 days a year.

Call 1-800-458-8006. Allanté owners may call 1-800-ALLANTÉ.

The advantages of SmartLease.

A GMAC SmartLeaseSM lets you conserve your capital for other priorities. Arrangements are

made with your Cadillac dealer and terms are

tailored to your personal needs.

We have tried to make this catalog as comprehensive and factual as possible. We reserve the right, however, to make changes at any time, without notice. In prices, colors, materials, equipment specifications, models and availability. Since some information may have been updated since the time of printing, please check with your Cadillac dealer for complete details.

Cadillacs are equipped with engines produced by different operating units of GM, its subsidiaries or suppliers to GM worldwide.

Cadillacs are assembled by different operating units of General Motors, its subsidiaries or suppliers to GM worldwide. Cadillacs incorporate thousands of components produced by different operating units of GM, its subsidiaries or suppliers to GM worldwide. We sometimes find it necessary to produce Cadillacs with different or differently sourced components than

originally scheduled. All such components have been approved for use in Cadillacs and will provide the quality performance associated with the Cadillac name. Since some options may be unavailable when your vehicle is assembled, we suggest that you verify that your vehicle includes the equipment you ordered, or if there are changes, that they are acceptable to you.

Cadillac regularly sends its dealers useful service bulletins about Cadillac products. Cadillac monitors product performance in the field. We then prepare bulletins for servicing our products better. Now you can get these bulletins, too. Ask your dealer. To get ordering information, call toll-free 1-800-551-4123.

Cadillacs are designed and built to resist corrosion. All body sheet-metal components are warranted against rust-through corrosion for 6 years/100,000 miles. Allanté is covered for 7 years/100,000 miles.

Cadillac Roadside Service provides on-the-spot assistance from more participating dealers than any other roadside service program.

There is no deductible for rust-through repairs. Application of additional rust-inhibiting materials is not required under the ultimate coverage and noise is recommended.

The GM 4-year/50,000-mile Gold Key Bumper to Bumper Warranty covers repairs for any new Cadillac, including labor and parts, to correct any defects in material or workmanship occurring during the warranty period.

The complete vehicle will be covered for 4 years or 50,000 miles, whichever comes first (except tires, which are covered by their manufacturer, adjustments, normal maintenance items and battery, which is covered

by its own 4-year/50,000-mile prorated warranty). The Cadillac Allanté is backed by the Allanté Assurance Plan—a 4-year/50,000-mile bumper-to-bumper warranty, including free towing and a portfolio of other services, and 7 years/100,000 miles on powertrain, major assembly components and rust-through protection. There is no deductible on any Cadillac warranty. See your Cadillac dealer for terms of these limited warranties.

GMAC financing. Financing is done right in the showroom. Terms are tailored to suit your personal needs. You can choose your monthly payment date.

CADILLAC, the CADILLAC emblem, THE ONLY WAY TO TRAVEL IS CADILLAC STYLE, ALLANTÉ, SEVILLE, ELDERADO, CADILLAC ROADSIDE SERVICE, the GM emblem, TWILIGHT SENTINEL, SOFT RIDE and FREEDOM are registered trademarks of the General Motors Corporation. TILT-WHEEL is a trademark of General Motors Corporation. GMAC and SMARTLEASE are registered trademarks of the General Motors Acceptance Corporation. 2000 Key is a registered trademark of the Delco Electronics Corporation. ©1991 GM CORP. All Rights Reserved. Litho in U.S.A. 7/91

*Covers every component (except tires, which are covered by their manufacturer, adjustments, normal maintenance items, and battery, which is covered by its own 4-year/50,000-mile prorated warranty). See your dealer for terms and conditions of this limited warranty.

Allanté



Seville • Seville STS • Eldorado • Eldorado Touring Coupe • Touring Sedan



*Additional cost on convertible.

†Additional cost for Eldorado and Seville.

**Available on convertible only.

††Touring Sedan only.

Availability of colors varies by model.



*Symbol of Outstanding
Stewardship*

BOB ULRICH

FREDERICK CHEVROLET-CADILLAC, INC.
1505 Quentin Road, P.O. Box 808, Lebanon, PA 17042
Tel: 717-274-1461

