

1998 TOYOTA

Sienna







XLE shown in Silver Spruce Metallic with optional Leather Trim Package.





In our lives, there are a few special things that **we can really count on**...to help us accomplish all that we need to do. Things we often take for granted because they are so reliable. However, such dependability doesn't come easy. For decades, the people at Toyota have dedicated themselves to providing you with vehicles of the highest quality and reliability while adapting their products to your ever changing needs.

TOYOTA | *everyday*

And their perseverance has paid off. Because Toyota is now one of the **most trusted names** in the automotive world — one of the few things you can really depend on. To go where you need to go and do the things you need to do...**every day**. Today, **our commitment** is stronger than ever — not only to the production of outstanding products but to you, the consumer. **Automotive safety** and the **environment** are major concerns so we're producing more innovative technology and cleaner burning, more energy-efficient vehicles. To help you make informed choices, we developed a Web site ([www.toyota.com](http://www.toyota.com)) with interactive views of each model, inside and out, tips on financing and purchasing your Toyota and dealer locations with easy-to-follow maps. There's a Toyota owners' club, and, for automotive enthusiasts, an entertaining area devoted to car culture with everything from games and quizzes to family trips and travel tips. And, if you'd like to share your thoughts and opinions, call our Customer Assistance Center at 1-800-331-4331. So come experience a Toyota and you'll discover that there's still something you can trust — to provide you with safety, comfort and enjoyment...each and every day.

4  
TOYOTA COMMITMENT

5  
MODEL LINEUP

6  
THE ALL-NEW SIENNA

8  
SAFETY

11  
DRIVER'S ENVIRONMENT

12  
COMFORT

14  
VERSATILITY

17  
TECHNOLOGY

19  
SIENNA LE

20  
SIENNA CE

23  
AMERICANIZATION

24  
OPTIONS AND ACCESSORIES

25  
COLORS AND FABRIC

26  
WARRANTIES AND FEATURES

27  
SPECIFICATIONS



SIENNA CE



SIENNA LE



SIENNA XLE



On the Sienna CE, value is standard. So it includes an impressive list of safety and convenience features. Outside, Sienna's sleek design features durable lower body cladding. Inside, there are dual air bags, a sliding door child protection lock, a multi-adjustable driver's seat, a Deluxe Electronically-Tuned AM/FM/Cassette with four speakers, foldable and removable second- and third-row seats with separate headrests, auto-off headlamps, multiple auxiliary 12-volt power outlets, a low tire pressure warning system, three interior lights and a thoughtful battery saver that turns off the interior lights after 30 minutes. It's all powered by a 3.0-liter DOHC V6 matched to a smooth-shifting, 4-speed, automatic transmission.

In addition to the long list of standard features found on the CE, the Sienna LE features the convenience of a Power Package that includes power door locks, windows and outside mirrors. You'll also enjoy the luxury of cruise control, dual illuminated vanity mirrors, dual air conditioning with a separate control panel for rear-seat passengers, a rear window defogger with timer and privacy glass to help keep the interior cool and valuables hidden. And High Solar Energy-Absorbing (HSEAG) glass dramatically reduces harmful ultraviolet and infrared rays.

In the XLE, exceptional luxury is the theme. We incorporated all the features found on both the CE and LE and added a multi-adjustable power driver's seat, Captain's Chairs, a leather-wrapped steering wheel, heated power outside mirrors, a Premium Electronically-Tuned Radio/CD with six speakers, and theft alarm system with remote-keyless entry, aluminum alloy wheels, color-keyed bumpers and cladding, a driver-side sliding door, a full-size spare plus a handy roof rack. And, there's an auto headlight control system that automatically turns them on and off according to the level of ambient light.





Sleek door handles follow the Sienna's body line and like its flush window glass, contribute to graceful, smooth looks and excellent aerodynamics.

Inside, Sienna's flowing lines continue with the trim, right down to this storage compartment lid.

If you're a parent, nothing is more important than your kids...or your grandkids. They're growing fast and soon they'll be little people with social lives, soccer and school.

Your life will never be the same. Of course, you'll be

## Helping you be a better parent, one mile at a time.

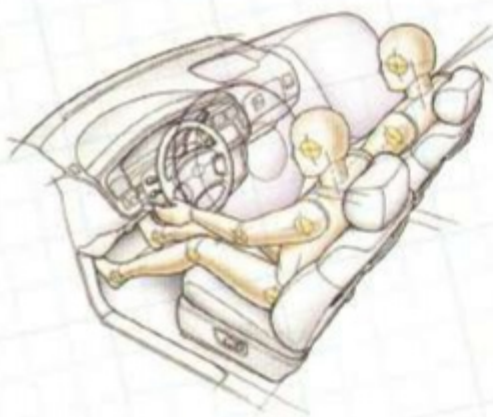
involved in their activities and that includes their friends as well. Your car is too small. You need a vehicle that's designed for your growing needs — comfortable, roomy, versatile and safe. A family room on wheels...surrounded by the sleek styling of a Toyota. Introducing the all-new Sienna. Built in America for your family.\*

\*Sienna is built with pride in Georgetown, Kentucky, with many parts manufactured in the U.S.

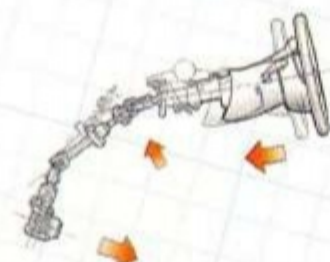


XLE shown in Sable Pearl with optional Leather Trim Package.





Sienna's driver and front passenger air bags are a Supplemental Restraint System (SRS) designed to protect you in the event of a severe frontal collision. Do not sit or place objects close to an air bag. To minimize the risk of severe injury or death in all types of crashes, seatbelts must be worn at all times by all vehicle occupants. Do not use a rearward-facing child seat in any front passenger seat. The force of a deploying air bag SRS may cause serious injury. For more information on air bags and instructions on child seat usage, see the Owner's Manual.



The steering mechanism's energy-absorbing plate and breakaway lower column help protect the driver in a severe frontal collision by allowing the steering wheel/column assembly to collapse under impact.

Sienna was created with your family in mind. So we built the body with high-tensile-strength steel and designed its structure to help absorb the energy of a collision before it can reach those inside. Crumple zones

## In designing Sienna, your safety was our greatest concern.

do the job in the front and rear, while dynamic side-impact door beams help dissipate some lateral impacts through a network of structural beams in the floor and roof. So, whether avoiding an accident or helping to protect you from the unavoidable, Sienna's many standard safety features work together to help you face traffic, weather and the unexpected with peace of mind.



If a tire's pressure should ever drop below the proper level, the tire icon on the fuel gauge will light up telling you to check the tires and inflate those that are low. Consequently, you can help maintain optimal fuel economy and performance. The system is standard on all Siennas.

Sienna's body is reinforced throughout for additional strength.

Dynamic side-impact door beams help protect you in the event of a lateral collision.

The confident maneuverability of MacPherson strut front suspension, a responsive 194-hp V6 and quick, power-assisted rack-and-pinion steering can help you avoid an accident.

A 4-wheel Anti-lock Brake System (ABS) is standard equipment on the Sienna. It helps you maintain better steering control during sudden stops on dry, wet or slippery pavement. On most other minivans, ABS is optional.

Your personal security is important so we've taken steps to protect you after dark. To help light your way, Sienna is equipped with two courtesy lamps and three interior lights that turn themselves off after 30 minutes. And the headlamps turn off automatically whenever you remove the ignition key.







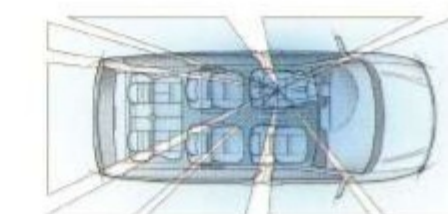
XLE shown in Oak with optional Leather Trim Package and Premium 3-in-1 ETR/Cassette/CD.

When you're chauffeuring a vanload of people, you don't need distractions. So we designed the instrument panel to position the gauges within your line of sight and placed important controls within easy reach so you can

## Take control. Sienna's useful features are at your fingertips.

concentrate on your driving. In addition to the features shown below, you'll also find an auxiliary 12-volt power port for your cell phone and at the base of your seat, next to your right hand, there's a fold-down cup holder.

In a Sienna, we've put you in full control.



Sienna's large window area provides a nearly panoramic view. Large outside mirrors complete the picture.

On the armrest, you'll find controls for the front power windows and door locks (optional on CE). A retained power feature lets you operate windows up to 45 seconds after the ignition has been turned off.



The XLE's power driver's seat includes adjustments for front and rear slide, seat cushion height and seatback recline.



Sienna's overhead console is the ideal place for a pair of sunglasses or a garage door opener — out of the way but still handy.



On the Sienna, you can set the cruise control without taking your hands from the wheel or your eyes from the road (std. on LE and XLE).



We designed the Sienna to maximize your comfort, so you'll find contoured seats surrounded by a quiet, spacious interior. By providing a column-mounted gear shift lever, a nearly flat floor and lots of space between the

## We created the Sienna with your comfort in mind.

front seats, we cleared a path to the second- and third-row seats. Spills are minimized with plenty of beverage holders and clutter is controlled with more than enough storage compartments. There are two 12-volt power ports, one up front and one in back. Thanks to special child-protector rear door locks, Sienna's sliding doors are virtually kid-proof.\* When the locks are engaged, the doors can't be opened from inside the vehicle.

\*Dual sliding doors optional on LE, standard on XLE.



On the LE and XLE, dual air conditioning includes separate controls for rear-seat passengers. One dial sets temperature while the other controls fan speed (optional on CE).



Both front seats feature a handy pouch with expandable elastic netting. It's the ideal spot for a purse, some maps or your favorite CD.



On the inboard side of each front seat is a convenient flip-down beverage holder. The retaining ring is notched to accommodate a juice box or a cup, handle and all.



On all models, recessed into the sliding door next to the second-row seats, is a handy bottle holder.



Accessible to second- and third-seat passengers is a 12-volt power outlet so the kids can listen to their own music or play video games.

LE shown in Oak with optional Captain's Chairs.



Looking for a minivan because a sedan can't accommodate your ever changing needs? Thanks to its versatile seating configurations and available dual sliding doors,\* Sienna provides

**In a minivan, versatility is a given.**

**So we gave you more.**

the utility of many different vehicles. This minivan easily converts from a comfortable people carrier to a roomy four-seat station wagon with plenty of rear cargo space, to a hardworking, cargo-hauling, two-seat utility van. With plenty of variations in between — Sienna does many things, very well.

\*Driver-side sliding door optional on LE, standard on XLE, but not available on CE.



A large cargo opening and a low liftover height make for easy loading and unloading. A 50/50 split fold-down rear seat allows you to simultaneously accommodate long cargo and passengers.



With all seats upright, the spacious Sienna comfortably seats seven and there's still plenty of room for luggage or groceries.



When folded down, second- and third-row seatbacks double as tables, complete with cup holders and recessed trays.



Third-row seat splits 50/50 so the entire seat can be tilted forward (as shown), or one chair can be tilted/removed while the other remains upright.



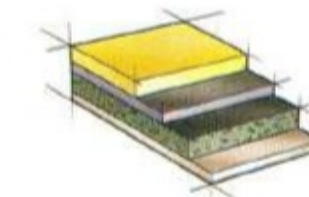
Or make room for something bigger. Thanks to a quick-release mechanism, both rows of seats are easily removed to create a large carpeted cargo area.











Sound-absorbing asphalt sheeting, resin and other advanced composites have been placed in strategic areas to help isolate you from road noise.

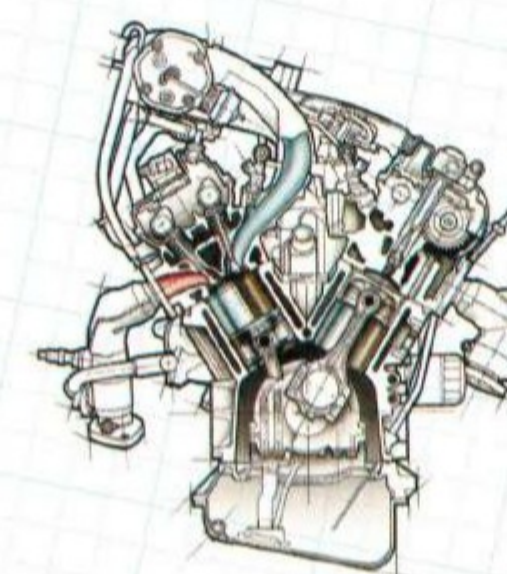
Making the transition from a car to a minivan is a pleasure if the minivan is a new front-wheel drive Sienna. That's because Sienna has been engineered to ride and feel like a sedan. After all, it's powered by an all-aluminum, 194-hp, four-cam V6 so acceleration is quick, yet fuel mileage is impressive.\* The

**Sienna is much more than a minivan.**

**It's a 7-passenger sedan.**

MacPherson strut front/torsion-beam rear suspension combines with a front stabilizer bar, power-assisted rack-and-pinion steering and a very rigid unitized body for tight, responsive handling and a smooth, quiet ride. The feel of a sedan. The versatility of a minivan. The quality of a Toyota. Together in Sienna.

\*For details, see EPA fuel mileage statement on page 27.



Powerful, yet frugal with a gallon of gas,\* Sienna's 24-valve V6 delivers smooth, responsive power across the rpm range.



A strong but lightweight torsion-beam rear suspension contributes to Sienna's straight-line control and excellent cornering. Shock absorbers are separate from springs and angled to minimize intrusion into the rear passenger area while increasing suspension travel for a comfortable ride.





A control switch on the center console allows the driver or front-seat passenger to open or close the rear quarter windows.



The convenience of power remote side mirrors helps keep the Sienna driver aware of his or her surroundings.

As you might expect, Sienna LE comes very well-equipped, making it an exceptional value. You'll appreciate the safety and convenience of standard power windows, door locks and outside mirrors. LE's privacy

## We've loaded the LE with luxuries you can use.

glass not only looks great, it lets you see out while others can't see in — hiding valuables from sight. What's more, it helps keep interior temperatures cooler and fabrics like new, longer. On extra-hot days, dual air conditioning, with front and rear controls, brings welcome relief. For those long stretches of highway, cruise control reduces fatigue, while a rear window defogger helps clear the view when the weather turns nasty. Sienna LE has the features to make your drive safer, easier and more relaxing.



All Siennas are priced competitively, with our greatest value defined by the Sienna CE. It comes with a long list of standard equipment. In addition to its powerful V6 engine, versatile seven-passenger seating and ABS brakes, you'll enjoy CE's Deluxe

**To us, Sienna CE means value.  
To you, it's money spent wisely.**

4-speaker ETR\*/Cassette. Resilient bodyside cladding helps protect the lower body from chipping. And High Solar Energy-Absorbing (HSEA) glass\*\* dramatically reduces infrared and UV rays, and that's good news for both you and the interior. An intermittent rear wiper helps maintain visibility. CE — all the value you would hope for, all the quality and reliability you'd expect from a Toyota.

\*\*Electronically-Tuned Radio.

\*\*Available only on Sienna CEs equipped with optional privacy glass. HSEA is included only in the windshield and front door windows.



Driver and passengers in the Sienna CE are treated to a roomy interior with many convenient storage bins and cup holders, two auxiliary 12-volt power outlets and supportive, adjustable seats covered with a high quality, durable cloth.







Our Kentucky craftspeople admire their latest masterpiece.



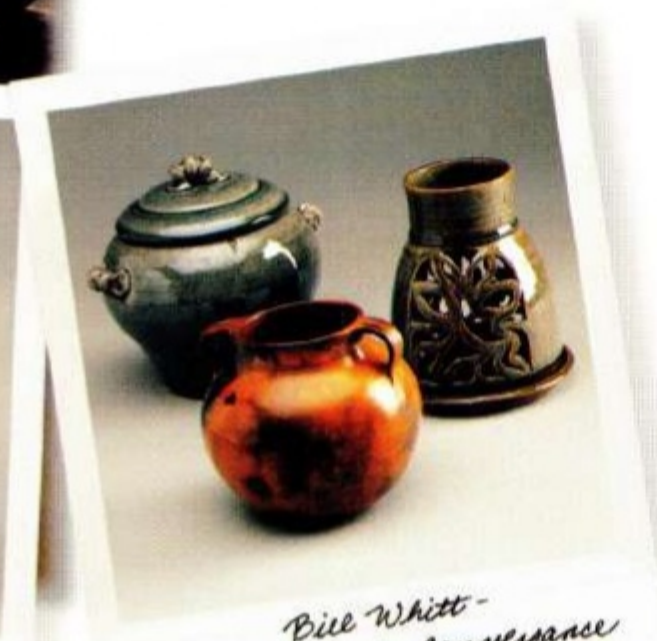
Robert Wilson -  
Paint Department



Myrna Lawrence -  
Inspection Operation



Jim Forrest -  
Power Train V-6



Bill Whitt -  
Parts Control & Conveyance

Team members' children learn and play right next door in our 24-hour child-development center. So their parents can better concentrate on their jobs — building Siennas with the high level of quality and reliability you expect from Toyota.



Almost ten years ago, Georgetown, Kentucky, celebrated the opening of Toyota Motor Manufacturing Kentucky — Toyota's first all-new American manufacturing facility. Before long, it was acknowledged as one of the finest automobile factories in the



Some of our Georgetown team members are artisans, a skill reflected not only in their crafts but in every Sienna they build.

## You'll find the artist's touch in every Georgetown Sienna.

country. Today, every Avalon sold in the world and nearly all the Camrys sold in the U.S. are built in Georgetown by more than 7,500 Americans — people dedicated to building engines and vehicles of the highest quality and reliability — with many parts provided by U.S. suppliers. To those achievements, we are proud to add the all-new Sienna.

You've seen their Siennas. Now take a look at some of their other accomplishments.



Denny Akers - Body Weld





Sienna's Black Pearl Emblem Package adds a touch of understated elegance by providing a great looking, weather resistant, Black Pearl finish to all exterior badges.



This moonroof wind deflector lets the sunshine in but helps keep the buffeting winds out.

If you'd like a personalized Sienna, then look at our collection of options and dealer-installed accessories. Each is designed for the Sienna so you can be sure of getting the proper fit and function and all the quality and reli-

**Sometimes it's the little things that make a big difference.**

ability you would expect from a Toyota product. But remember, Toyota vehicles are built with popular option combinations. Not all options are available separately and some may not be available in all areas of the country. For assistance, see your Toyota dealer. He or she can help you locate the Sienna that's right for you.



Genuine wood dash inlays add a touch of elegance to Sienna's attractive instrumentation.



Protect your vehicle with the Toyota Vehicle Intrusion Protection (VIP) RS-3000 System. When activated, it disables the starter and protects all entry points. Included is a glass breakage sensor and a remote transmitter that arms/disarms the unit and locks/unlocks\* the doors from up to 30 feet away.

\*Requires optional Power Package on CE.



Help keep your Sienna's bumper free of dings and scratches while protecting it from muddy boots and sharp cleats with this rear bumper protector.



Enjoy the clear, crisp sound of a compact disc with our ETR/CD player. Or, if one CD isn't enough, you may want to consider Toyota's optional 3D CD (3-disc in-dash). It will provide you with hours of uninterrupted listening pleasure.

## ACCESSORIES

Wood Grain Dash	Cargo Net
Moonroof Wind Deflector <sup>1</sup>	Trunk Mat
Wheel Locks	Compact Disc Deck
Remote Keyless Entry System <sup>2</sup>	Carpeted Floor Mats
Auto-reverse Cassette Deck with Dolby®	Toyota 3D CD (3-disc in-dash)
Color-keyed Rear Spoiler	Black Pearl Emblem Package
Gold Emblem Package (includes gold-plated emblems)	Front-end Mask with Storage Bag (half- or full-mask style)
Toyota Vehicle Intrusion Protection (VIP) S-1000 <sup>3</sup> System	Toyota Vehicle Intrusion Protection (VIP) RS-3000 System

<sup>1</sup>Available only on XLE.

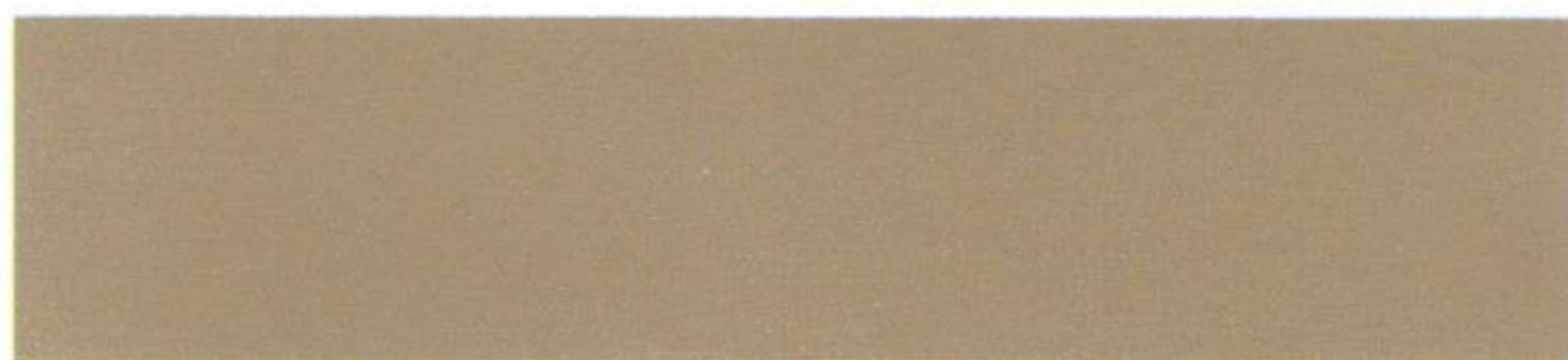
<sup>2</sup>Can be combined with Toyota Vehicle Intrusion Protection (VIP) S-1000 System.

<sup>3</sup>Can be combined with Remote Keyless Entry System.



LE shown in Super White with optional alloy wheels, Towing Package, roof rack, and accessory Gold Package, rear wind deflector and running boards.





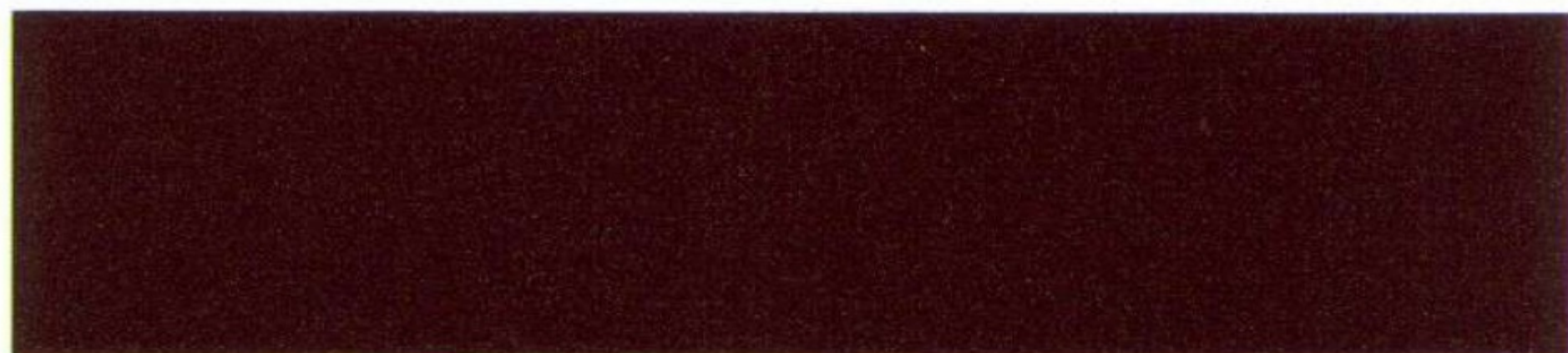
Sable Pearl with Oak Interior



Super White with Gray or Oak Interior



Sunfire Red Pearl with Gray or Oak Interior



Napa Burgundy Pearl with Gray or Oak Interior



Frosted Iris Metallic with Gray Interior<sup>1</sup>



Denim Blue Mica with Gray Interior



Classic Green Pearl with Gray or Oak Interior



Silver Spruce Metallic with Gray or Oak Interior

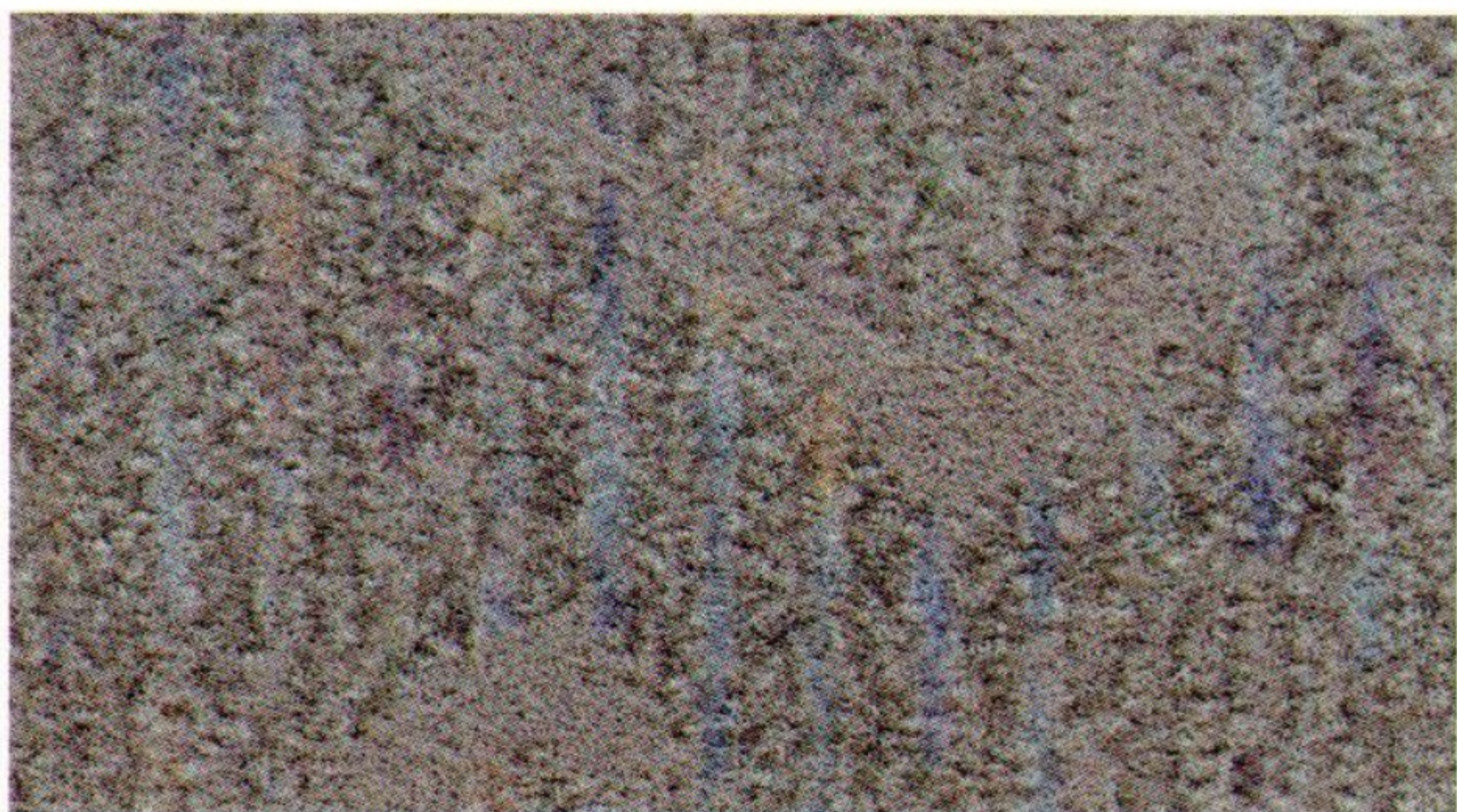


Black with Gray or Oak Interior

<sup>1</sup>Not available on Sienna XLE.



CE Fabric in Gray or Oak (shown)



LE and XLE Fabric in Oak or Gray (shown)



XLE Leather Trim Package<sup>1</sup> in Gray or Oak (shown)

<sup>1</sup>Optional.



WARRANTIES\*

Every Toyota Car and Truck has excellent warranty coverage. However, given Toyota's worldwide reputation for quality, reliability and dependability, you may never find out just how good our new vehicle warranty really is. But, should you ever need it, we've definitely got you covered.

**Basic Coverage:** All components other than normal wear and maintenance items are covered for 36 months/36,000 miles.

**Powertrain Coverage:** Your engine, transmission/transaxle, front-wheel drive, rear-wheel drive, seatbelts and air bags are covered for 60 months/60,000 miles.

**Rust-through Coverage:** Corrosion perforation of sheet metal is covered for 60 months/unlimited miles.

**Service Adjustment Coverage:** Minor repairs required to return a component to factory specifications are covered for 12 months/12,500 miles (24 months/18,000 miles in New York state).

**Federal Emission Coverage:** Components under the federal emission defect warranty are covered for 36 months/36,000 miles and specified major emission control components are covered for 8 years/80,000 miles. Specified major emission control components under emission performance warranty are also covered for 8 years/80,000 miles.

In addition, emission performance warranty is applicable for 24 months/24,000 miles in states and local jurisdictions that require a periodic EPA-approved inspection and maintenance program.\*

**California Emission Control Coverage:** In California and any other state that adopts California emission warranty provisions, performance warranty and defect warranty coverage is applicable for 36 months/50,000 miles and specific control devices are covered for 7 years/70,000 miles.\*

**Accessory Warranty:** Toyota-approved accessories are covered for 12 months, regardless of mileage, or for the remainder of any new vehicle warranty (except for car covers, which are covered for 12 months).

**In addition,** there may be times when we will establish a special policy adjustment which will further defray repair costs. For complete details of Toyota's warranties, please refer to the *Owner's Manual Supplement*.

**An Added Benefit for 1998 Toyota Vehicle Owners:** You may be eligible for transportation assistance if your vehicle is required to be kept overnight for warrantable repairs.\*

\*See your Toyota dealer for more details about the new vehicle warranty.

FEATURES

	CE	LE	XLE
<b>EXTERIOR</b>			
Aerodynamic halogen headlamps (with auto-control system on XLE models)	■	■	■
Washer-linked variable intermittent front windshield and intermittent rear wipers	■	■	■
Protective bodyside cladding (color-keyed on XLE)	■	■	■
High Solar Energy-Absorbing (HSEA) glass	● <sup>1</sup>	■	■
Privacy glass (with power-operated rear quarter windows on LE and XLE models)	●	■	■
Fold-away power outside rearview mirrors	●	■	■
Heated fold-away power outside rearview mirrors	●	●	■
Driver-side sliding door	—	●	■
15" steel wheels with P205/70R15 tires and full wheel covers	■	■	—
15" aluminum alloy wheels with P215/65R15 tires <sup>2</sup>	—	●	■
Power tilt/slide glass moonroof with sunshade	—	—	● <sup>3</sup>
Roof rack	●	●	■
Rear window defogger with timer	●	■	■
Full-size spare tire on 15" steel wheel	●	●	■

<b>INTERIOR</b>			
Fabric seat and door trim	■	■	■
Multi-adjustable driver's seat (power adjustable on XLE model)	■	■	■
Removable center-row bench seat with adjustable headrests and seatback table	■	■	—
Removable center-row bench seat with adjustable headrests, seatback table and dual Child Restraint Seats (CRS) (not available with Captain's Chairs)	●	●	—
Removable third-row 50/50 split fold-down/tilt-forward seats with adjustable headrests, cup holders and seatback tables	■	■	■
Removable center-row Captain's Chairs with integrated cup holders and seatback tables	—	●	■
Front passenger under-seat storage tray (not available with dual air conditioning)	■	—	—
Cruise control (part of Power Package on CE model)	●	■	■
Overhead console with garage door opener/sunglasses holder	■	■	■
Power windows with driver-side auto-down and retained power	●	■	■
Power door locks with anti-lockout feature	●	■	■
Defroster-linked CFC-free air conditioning	■	—	—
Defroster-linked CFC-free dual air conditioning with rear control panel	●	■	■
Cup holders—dual front, middle, rear and seatback	■	■	■
Dual visor vanity mirrors (illuminated on LE and XLE models)	■	■	■
Tilt steering wheel (leather-wrapped on XLE models)	■	■	■
Front and rear auxiliary power outlets	■	■	■
Digital clock	■	■	■
Speedometer, fuel and temperature gauges; digital odometer with twin tripmeters and transmission indicator (with tachometer on LE and XLE)	■	■	■
Air bag, ABS, seatbelt, low-fuel level, door-ajar, low tire pressure, low washer fluid, battery, oil pressure and check engine warning lights	■	■	■
Front, center and rear dome lights, courtesy lamps and illuminated ignition key ring	■	■	■
Remote hood and fuel-filler door releases	■	■	■
Carpeted floor mats	▲	▲	■

<b>PACKAGES</b>			
XLE Leather Trim Package—leather seat and door trim, power tilt/slide moonroof with sunshade	—	—	●
LE Equipment Package #1—Premium ETR/Cassette with 6 speakers and roof rack	—	●	—
LE Equipment Package #2—alloy wheels with P215/65R15 tires and full-size spare tire, Premium ETR/Cassette with 6 speakers, roof rack and Captain's Chairs	—	●	—
Security Package—anti-theft system with remote keyless entry	—	●	■
Power Package—power windows, door locks and cruise control	●	■	■
Towing Package	●	●	●

<b>AUDIO SYSTEMS</b>			
Deluxe ETR/Cassette with 4 speakers	■	■	—
Deluxe ETR/CD with 4 speakers	●	●	—
Premium ETR/Cassette with 6 speakers	—	●	—
Premium ETR/CD with 6 speakers	—	●	■
Premium 3-in-1 ETR/Cassette/CD with 6 speakers	—	●	●
Cassette Deck	▲	▲	▲
Compact Disc Deck	▲	▲	—
CD Changer—Toyota 3D CD (3-disc in-dash; not available with above Compact Disc units)	▲	▲	—

SPECIFICATIONS

	CE	LE	XLE
<b>MECHANICAL/PERFORMANCE</b>			
Engine	Aluminum 3.0-liter four-cam 24-valve V6 with multi-point EFI 194 hp @ 5,200 rpm 209 lb.-ft. @ 4,400 rpm		
Ignition	Distributorless Toyota Direct Ignition System (TDI)		
Transmission	4-speed electronically controlled automatic overdrive (ECT)		
Drivetrain	Front engine, front-wheel drive		
Body construction	Unitized body with front anti-vibration sub-frame		
Suspension	MacPherson strut front suspension with gas-filled shock absorbers, stabilizer bar and anti-vibration sub-frame; torsion beam rear suspension with coil springs and gas-filled shock absorbers		
Steering	Variable-assist power rack-and-pinion		
Turning circle diameter, curb to curb (ft.)	40.0		
Brakes	Power-assisted ventilated front disc, rear drum brakes		
Anti-lock Brake System (ABS)	Standard—4-sensor/3-channel		

<b>EXTERIOR DIMENSIONS (IN.)</b>			
Overall height, unloaded	67.3	67.3	67.3
Overall width	73.4	73.4	73.4
Overall length	193.5	193.5	193.5
Wheelbase	114.2	114.2	114.2
Tread width (front/rear)	61.6/63.4	61.6/63.4	61.6/63.4
Coefficient of drag (Cd)	.32	.32	.32

<b>INTERIOR DIMENSIONS FRONT/MIDDLE/REAR (IN.)</b>			
Head room	40.6/40.7/37.7	40.6/40.7/37.7	40.6/39.4/37.1
Shoulder room	60.4/62.0/60.5	60.4/62.0/60.5	60.4/62.0/60.5
Hip room	58.7/58.3/50.0	58.7/58.3/50.0	58.7/63.2/50.0
Leg room	41.9/36.5/34.0	41.9/36.5/34.0	41.9/36.6/34.0

<b>WEIGHTS AND CAPACITIES</b>			
Curb weight (lbs.) single/dual sliding doors	3,758/NA	3,825/3,891	NA/4,055
Passenger seating	7	7	7
Cargo volume (cu. ft.) behind front/middle/rear seats			
Single sliding door	131.0/73.3/179	131.0/73.3/179	NA
Dual sliding doors	NA	143.0/77.8/179	143.0/77.8/179
Towing capacity <sup>4</sup> (lbs.) standard/optional	1,000/3,500	1,000/3,500	1,000/3,500
Fuel tank (gals.)	20.9	20.9	20.9

<b>TIRES</b>			
Size	P205/70R15	P205/70R15	P215/65R15
Type	All-Season steel-belted radial blackwall		
Spare	Temporary <sup>5</sup>	Temporary <sup>5</sup>	Full-size

<b>MILEAGE ESTIMATES (EPA ESTIMATED MPG CITY/HIGHWAY)<sup>6</sup></b>			
4-speed electronically controlled automatic overdrive (ECT)	18/24	18/24	18/24

SAFETY FEATURES

Driver and front passenger air bag Supplemental Restraint System (SRS) <sup>7</sup>
Front and rear crumple zones and front and rear dynamic side-impact door beams
3-point shoulder belts in all outboard seats with adjustable shoulder belt anchors on front seats, driver's belt Emergency Locking Retractor (ELR); Automatic/Emergency Locking Retractor (ALR/ELR) on all other outboard belts
Front shoulder belt pretensioners with force limiters
2-point lap belt in third seat center position

Collapsible steering column with secondary impact absorption
Child-protector sliding door locks
Low tire pressure warning system
Reinforced steel unit-body with high-tensile-strength steel body panels
Battery-saver feature—deactivates dome lights after 30 minutes
Headrests in all outboard seating positions
Power-assisted front disc/rear drum brakes with 4-sensor/3-channel ABS
Anti-theft system with remote keyless entry; optional on LE, standard on XLE

- Standard
- Factory option
- ▲ Accessory
- Not available
- NA Not applicable

<sup>1</sup>Included with optional privacy glass; HSEA glass on windshield and front side windows only.  
<sup>2</sup>Includes full-size spare tire on steel wheel.  
<sup>3</sup>Part of XLE Leather Trim Package.  
<sup>4</sup>Requires additional equipment. See your Toyota dealer for details and GCWR limits.  
<sup>5</sup>Optional full-size.  
<sup>6</sup>1998 preliminary EPA mileage estimates determined by Toyota. Final 1998 EPA mileage estimates not available at time of printing. See your Toyota dealer for details.  
<sup>7</sup>See page 8 for information on Sienna's driver and front passenger air bag Supplemental Restraint System (SRS).

Some vehicles are shown with optional equipment. For further information regarding wiring converters and towing hitch receivers, please consult the 1998 Toyota Trailer Towing Guide, available at your local Toyota dealer.

Seatbelts should be worn at all times. Please do not allow passengers to ride in the cargo area. Towing hitch receivers/ball mount kits are not intended to provide crash protection.

For details on 1998 vehicle specifications, standard features and optional equipment in your area, contact your Toyota dealer. A vehicle with particular equipment may not be available at the dealership. Ask your Toyota dealer to help locate a specifically equipped vehicle.

Specifications, standard features and optional equipment are based upon information available at the time of printing and are subject to change without notice. Specifications, standard features and optional equipment are for mainland U.S.A. vehicles only and may differ in the state of Hawaii and in other regions.

Sienna is also available in a cargo van version.

**Castrol** Toyota's Motorsports Partner







TERCEL\*



COROLLA



CAMRY



AVALON



CELICA



SUPRA



SIENNA

Your life will never be the same.



RAV4



4RUNNER



LAND CRUISER



TACOMA



T100

PC8-015 (8/97) 00617-98118

Litho in U.S.A. (550M)

©1997 Toyota Motor Sales, U.S.A., Inc.

1 800-GO-TOYOTA ♦ [www.toyota.com](http://www.toyota.com)

\*Limited availability.

TOYOTA | everyday