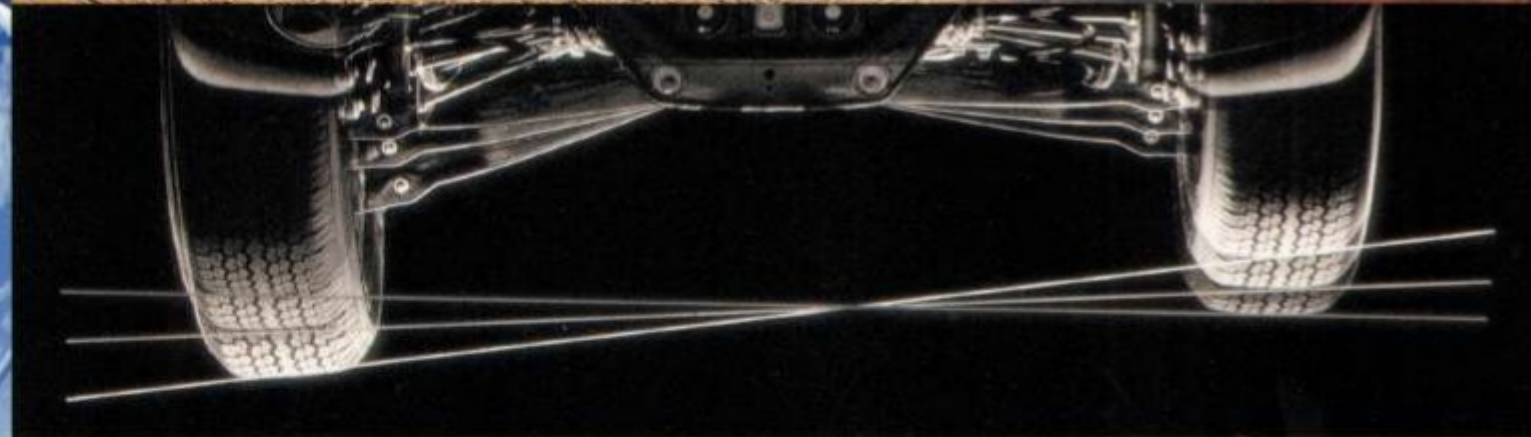




2001 Mitsubishi **Montero**

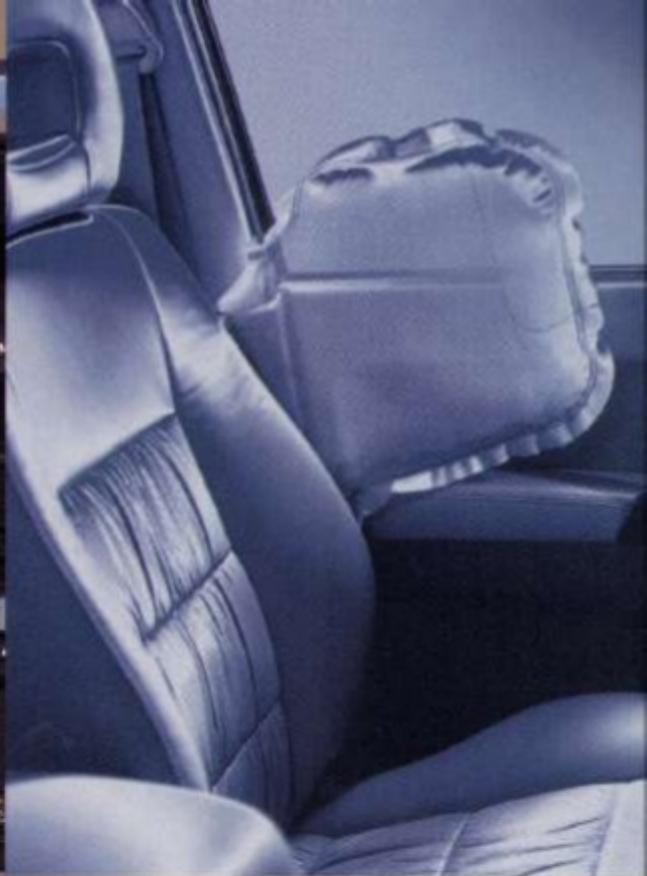




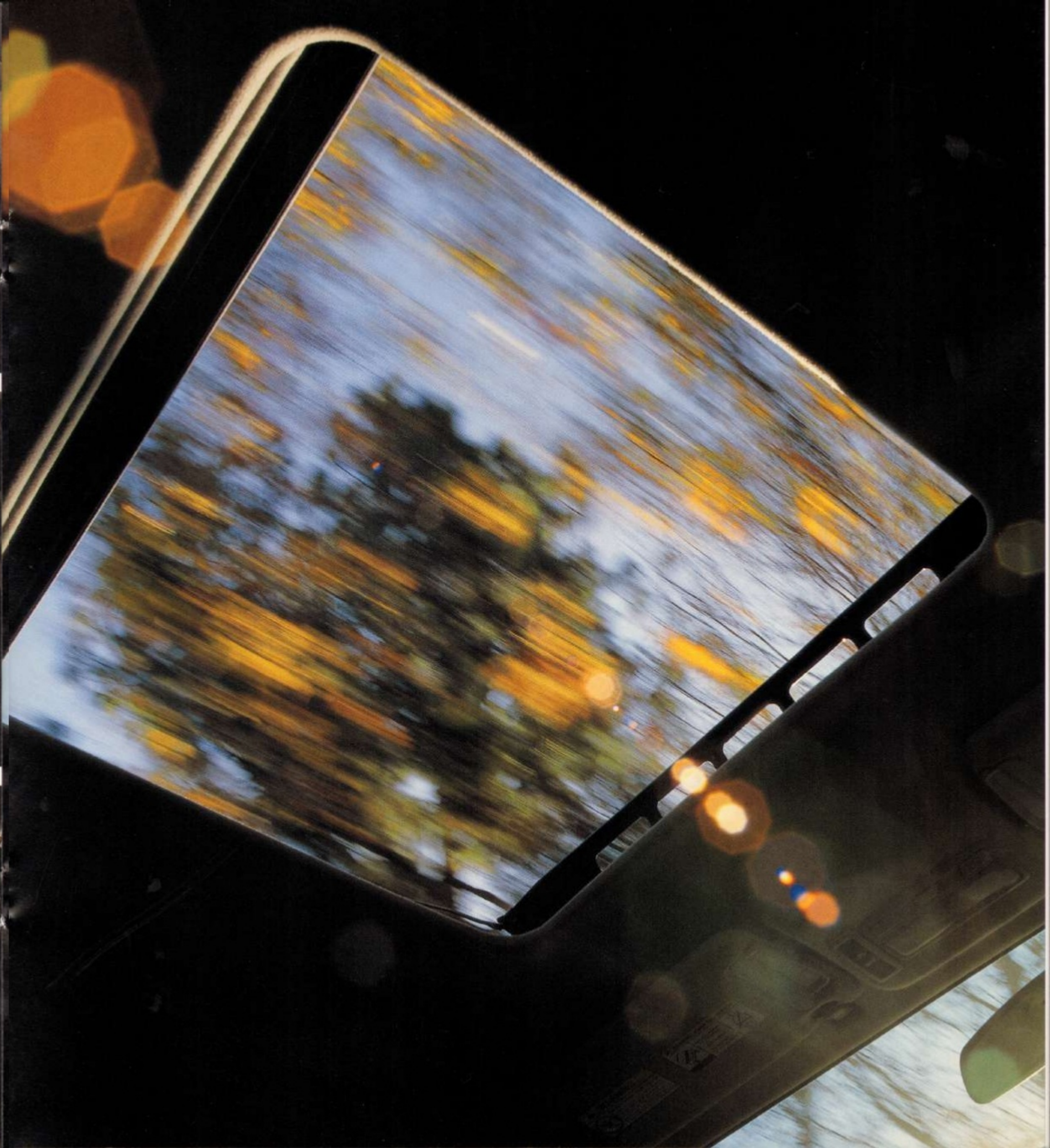














There you are, surrounded by snowcapped mountains, a rushing river fat with trout, and acres of virgin pine forest between you and the nearest fax machine. As the terrain gets more rugged, you really start to appreciate your radically redesigned 2001 Montero, with its luxurious interior and ultra-smooth ride. Your six passengers are even more impressed with the roomy interior. When you stop to stretch and take in the breathtaking view, you realize this powerful, four-wheel-drive vehicle is the only thing anchoring you to that place you call civilization. As you climb back into your new Montero, you begin to wonder, "Do bears get jealous?" Just to be on the safe side, you hit the power door locks.



Introducing the 2001 Montero. With its new lighter, tighter, fiercer body, it grabs your attention. By the throat. You'll notice that it's lower, longer and wider than before. Take a look at the radically redesigned front end. The fenders are boldly sculpted, while the new front grille guarantees the undivided attention of passersby. A roof rack and 16" alloy wheels only add clout to the curb appeal. And unlike a lot of the competition, the Montero was designed from the start to be a sport utility vehicle. As one of the first SUVs on the market, it hardly needs to prove its rugged individuality. Yet it does just that, year after year, in the grueling 14-day Dakar Rally. This is a race so intense, finishing at all is nearly as impressive as finishing first, something the Mitsubishi Montero* has done five times. More times, actually, than any other SUV. So, whoever says the Montero is just another pretty face, better not say that to its face.

*Specially race-prepared versions.



Underneath the beautifully redesigned exterior, the 2001 Montero has been re-thought, re-engineered and rebuilt from the earth up. The all new unibody construction provides a quieter, more refined, spine-pleasing ride. Think tall, luxury sedan, with more backbone. And it sits a rock-clearing nine inches off the ground, yet offers a lower step-in height. The Montero also features a four-wheel independent suspension system, a civilian version of the one we use in our trophy-winning Dakar Rally vehicles. So what does that mean to you? Well, besides increased wheel stroke, reduced unsprung weight and new multi-link suspension geometry, we like to sum it up this way: Better ride. Better cornering. Better traction. Basically better.

Which brings us to safer. Note that safety features like front and side air bags¹ come standard. Mitsubishi's exclusive RISE (Refined Impact Safety Evolution) chassis construction is specially designed to help maximize structural integrity. And the inner reinforced framework with crumple zones helps deflect impact away from the cabin in the event of a collision. So, you could say, it's the kind of vehicle that will sacrifice its good looks for you. Now, how many supermodels will do that?

¹Always place an infant in a rear-facing infant seat in the 2nd-row seat. Always transport children 1 to 12 years old in the rear seats and use appropriate child restraints. Always buckle your safety belt. Keep 10" between the center of the air bag cover and your breastbone. Sit well back and upright without leaning against the window or door.



While the Montero takes great care of you on the road, take it off the pavement and you can really see what it's made of. We added a simple drive-type selector that electronically engages the Active Trac™ drive system on the Montero Limited. So, you can shift from two-wheel drive to all-wheel drive to a two-range four-wheel drive, quickly and easily. It's an impressive act that most other SUVs can't follow. This system offers a 4H setting to engage all-wheel drive for better grip on all surfaces. It's an easy shift into 4HL for basic mud and snow conditions, and a third setting, 4LL, was designed to help you navigate whatever else Mother Nature has to offer. In addition, to improve control when cornering, the limited-slip rear differential shifts available power to the rear wheel that has traction. It all adds up to a more confident driving experience. And who among us couldn't use more of that.



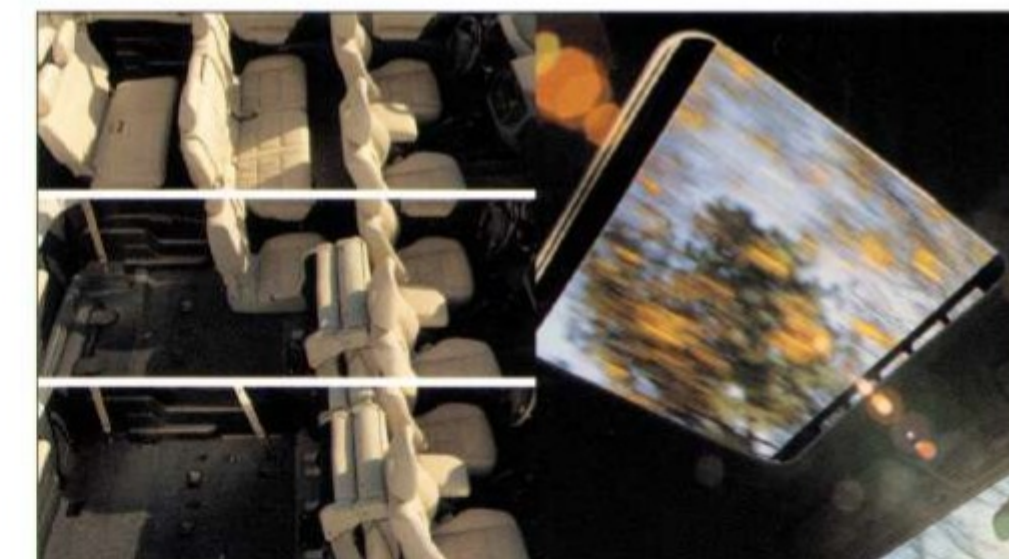
This electronically controlled, sequential multi-port fuel injected V6 features a 24-valve cylinder head for better engine breathing—and it's fuel-efficient, as well.¹ Sorry. In English, that means the V6 engine pumps out a healthy 200 horsepower without blowing your gas budget. For heavy-duty stopping power, we specially designed the ventilated four-wheel disc brakes. And unlike some other SUVs, the Montero features a MultiMode™ four-wheel anti-lock braking system that operates in all drive modes, adding an extra measure of safety by helping you maintain steering control during hard braking. For those who want a more exhilarating driving experience with optimum control, the Montero Limited offers the option to stay in normal automatic transmission mode or shift like a manual. This feature is called the Mitsubishi Sportronic™ sequential-shift five-speed automatic transmission. Now, try and say that three times fast.



The 2001 Montero has seating for seven with plenty of hip, leg, shoulder and headroom for seven people who cherish their hips, legs, shoulders and heads. In the Montero XLS, features like air conditioning, cruise control, power windows, locks, mirrors and a 100-watt AM/FM/CD audio system come standard. Or step up to the Montero Limited, with front and second-row leather seating surfaces (front seats are heated), a 175-watt Mitsubishi/Infinity® Premium Audio System with seven speakers and heated, chrome sideview mirrors. Everyone will appreciate the available automatic climate control in the front, along with rear heating and air conditioning with mid-cabin controls. There's also an extra large, one-touch power glass sunroof with tilt feature and sunshade. Both models come with other thoughtful extras, like a deeper, wider center console with a sliding center armrest, conveniently placed cup holders and dual storage compartments. An SUV this luxurious is bound to have lots of admirers. So, just to make sure that they look but don't touch, Montero's anti-theft engine immobilizer system helps prevent it from being started by any key other than yours.



Trip to the mountains. Trip to the pet store. No matter what you need to haul, the Montero interior was beautifully redesigned to take the load off of, well, loading. It's extremely spacious. So even with the third seat, there's plenty of room for everything on your list, like the family-size tent, assorted air mattresses, barbecue, cooler and enough food to feed a hungry pack of teenagers. The Montero's cargo space can handle it all with a variety of conveniently located storage compartments, a deep, in-floor, covered storage bin and tie-down hooks. Plus, it has a snappy cargo cover to hide it all from view. And because an adventure often involves the unknown, we wanted you to be prepared for that too. So we added a portable tool kit for unexpected pit stops and three 12-volt accessory outlets for all those handy gadgets you just can't live without. Even when you're getting away from it all.



To accommodate your ever-growing dynasty, the Montero offers ample seating for seven. It's the only SUV with a third-row seat that is quickly and easily removed or can be stowed in the floor, leaving a totally flat cargo area. And even with the seat in position, you can access the covered under-floor storage compartment. Perfect for all those times when a trip to the warehouse store yields a lifetime supply of paper towels. As for the second-row seats, our 60/40 flip-and-fold design allows for flexible seating configurations, as well as extra cargo space. We even enlarged the available roof rack area. The power glass sunroof (available on the XLS and standard on the Limited), with both one-touch and tilt features, is also extra large. That way, even the person in the middle can feel like they have a window seat. Now, speaking of space, when it comes to all the impressive features of the 2001 Montero, we have a lot more to say and not enough room to say it. We also know that you have people to see, mountains to climb and clothes to dry-clean. So, we recommend you put down this brochure and take a test drive to experience how toughness meets style in person. There might even be a dry cleaners along the way.

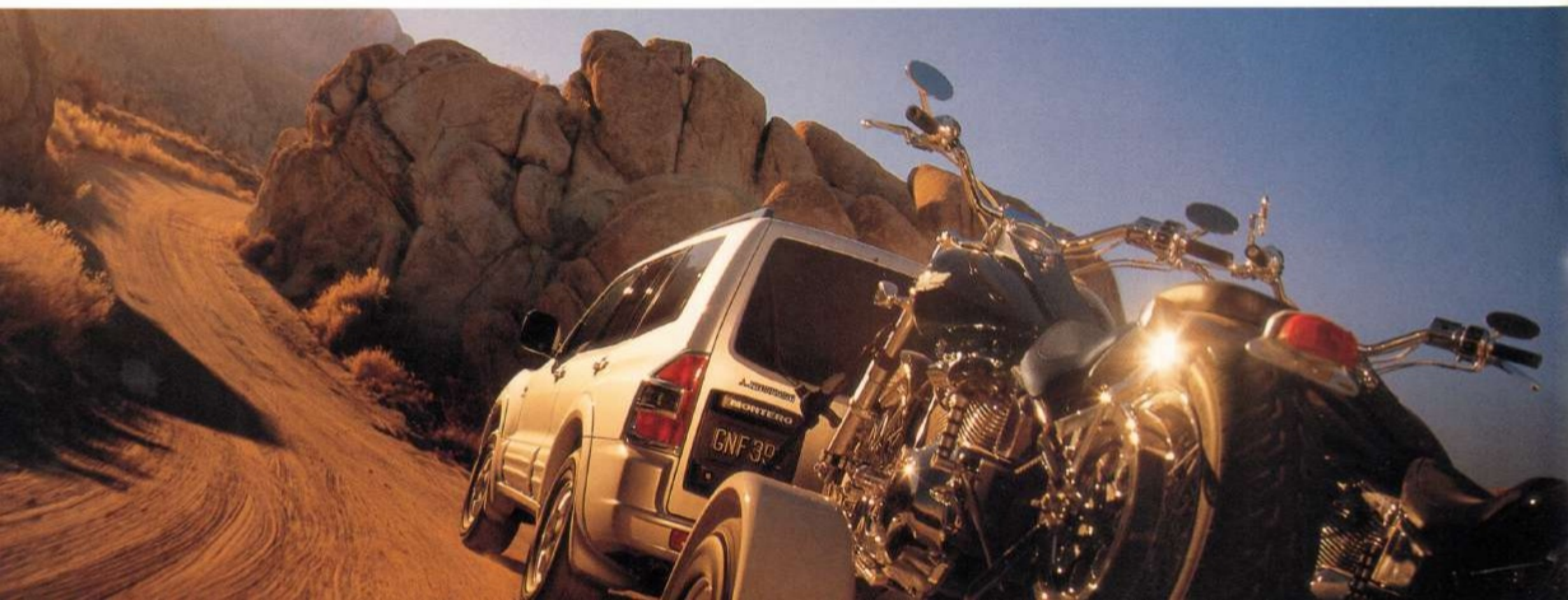


- 100-watt Mitsubishi Audio System:
includes AM/FM stereo CD player with six speakers
- 6-disc in-dash CD changer
- 175-watt Mitsubishi/Infinity® Premium Audio System:
includes AM/FM stereo CD player with seven speakers

Whether you're into biking, skiing or playing drum solos on the dashboard, we have the accessories that you or your family



may decide are essentials. After all, no mountain-biking, snow-loving rock star should be seen without them.



CAMBRIDGE RED PEARL/SUDAN BEIGE METALLIC

SOLANO BLACK PEARL/SUDAN BEIGE METALLIC

SUMMIT WHITE/MUNICH SILVER METALLIC

SEQUOIA GREEN PEARL/SUDAN BEIGE METALLIC

Standard Equipment/Specifications

Montero XLS

EXTERIOR
16" 6-spoke alloy wheels
P265/70 R16 mud-and-snow, all-season, steel-belted tires
Tailgate-mounted full size alloy spare wheel and tire with cover
Mudguards, front and rear
Skid plates for front end and fuel tank
Auto-off headlights
Tow hooks, front and rear
Folding power sideview mirrors
Two-speed variable intermittent windshield wipers with mist control
Intermittent rear-window wiper/washer
Heavy-duty electric rear-window defroster with timer
Roof rails
Color-keyed bumpers
Whip and glass diversity antennas
Privacy glass and flip-out rear quarter windows

COMFORT AND CONVENIENCE
100-watt Mitsubishi Audio System: includes AM/FM stereo
CD player with 6 speakers
Air conditioning with CFC-free refrigerant
Tachometer
Cruise control
10-way adjustable driver's seat including dual height adjustment
6-way adjustable front passenger's seat
Second-row 60/40 split fold-down rear seatback
In-floor stowable, removable 3rd-row seat/covered under-floor storage
Velour fabric
Power windows with auto-down driver's window and 30-second power reserve
Power door locks with security logic and child safety locks
Remote hood and fuel filler door releases
Security alarm system with remote keyless entry and panic feature
Center console with sliding armrest and dual storage compartments
Cup holders, front, middle and rear
Front door and front seatback storage pockets
12-volt accessory outlets (3)
Passenger-assist grips (10)
Map lights
Vanity mirrors
Floor mats
Cargo cover
Cargo tie-down hooks (4)
Portable tool kit (tailgate interior)

ENGINE/DRIVETRAIN
200-hp 3.5-liter SOHC 24-valve V6 engine
Part-time 4WD with two-speed transfer case
Electronically controlled sequential multi-port fuel injection
Anti-theft engine immobilizer

4-speed automatic transmission with adaptive shift control
Engine oil and transmission fluid coolers
Stainless steel exhaust system

BODY/CHASSIS
Unibody construction
Front independent double wishbone suspension with coil springs
Rear independent multi-link suspension with coil springs
Front and rear stabilizer bars
Power-assist 11.4" ventilated front disc/11.8" ventilated rear disc brakes
MultiMode™ 4-wheel anti-lock braking system (ABS)
Variable-assist power rack-and-pinion steering

SAFETY
3-point safety belts for all outboard passengers
Second-row seat center lap belt
Height-adjustable front shoulder belt anchors
Dual front air bags¹
Dual front side air bags¹
Child safety locks
Lower anchorages for child safety seats (2nd row)
Side-guard door beams

INTERIOR DIMENSIONS		
Headroom (in., front/middle/rear)	41.4/40.2/37.9	
Headroom with sunroof (in., front/middle/rear)	38.9/37.7/35.3	
Legroom (in., front/middle/rear)	42.7/37.6/19.4	
Shoulder room (in., front/middle/rear)	58.5/58.5/59.1	
Hip room (in., front/middle/rear)	56.0/55.0/43.0	
Cargo volume (cu. ft., max/behind 2nd row)	96.4/42.1	

EXTERIOR DIMENSIONS		
Wheelbase (in.)	109.5	
Length (in.)	188.9	
Height (in.)	73.1	
Width (in.)	73.9	
Track (in., front/rear)	61.5/61.5	
Minimum ground clearance (in.)	9.3	
Approach/departure angles (degrees)	42°/24°	

XLS PREFERRED EQUIPMENT PACKAGE
One-touch power glass sunroof with tilt feature and sunshade
Limited-slip rear differential

	EPA MILEAGE ESTIMATES²/FUEL CAPACITY/CURB WEIGHTS	
	XLS	LIMITED
4-speed automatic (city/highway)	14/17	-
Sportronic™ (city/highway)	-	13/18
Fuel (gal.)	23.8	23.8
Curb weights (lbs.)	4540	4675

14-way adjustable (10-way power) driver's seat including dual power height adjustment and power adjustable lumbar support
LCD Information Center: includes compass, outside temperature, miles-to-empty, date and time
Leather and wood steering wheel
Woodgrain interior trim
Chrome grille and taillight bezels
Integrated fog lights
Power antenna

LIMITED PREFERRED EQUIPMENT PACKAGE
Automatic front climate control
Rear air conditioning and heating with mid-cabin controls

NOTE Technical data, features, options and other equipment shown in this brochure are based on the latest information available at the time of printing and are subject to change without notice. Headlights, parking lights, fog lights and instrument panel lights on vehicles illuminated for illustration purposes only. Montero XLS and Limited models shown. The trademark Mirage is used with the consent of Grand Touring Cars, Inc., Scottsdale, AZ.

SAFETY Safety is a two-way street. It requires your attention and cooperation. Please remember to fasten your safety belt, drive responsibly and obey all local traffic laws.

OPTIONAL EQUIPMENT Availability of vehicles with specific features may vary. For further information on options and accessories, contact your Mitsubishi Motors Retailer. For the Mitsubishi Motors Retailer nearest you, call 1-888-MITSU2001 or visit our website at mitsubishicars.com. Some vehicles are shown with optional equipment.

¹Always place an infant in a rear-facing infant seat in the 2nd-row seat. Always transport children 1 to 12 years old in the rear seats and use appropriate child restraints. Always buckle your safety belt. Keep 10" between the center of the air bag cover and your breastbone. Sit well back and upright without leaning against the window or door.

²Estimates to be used as a standardized comparison with other vehicles. Your mileage may vary depending on driving style and environmental conditions.

Litho in USA on Recycled Paper. ©2000 Mitsubishi Motor Sales of America, Inc., 6400 Katella Ave., Cypress, CA 90630-0064. Part Number MMSA-MTO01600

We'll stand by you.

WARRANTIES*
Every 2001 Mitsubishi comes with extensive coverage to ensure your satisfaction, including a 3-year/36,000-mile New Vehicle Limited Warranty; a 5-year/60,000-mile Powertrain Limited Warranty; and a 7-year/100,000-mile Anti-Corrosion/Perforation Limited Warranty.

DIAMOND CARE™
This program ensures your new Mitsubishi vehicle is thoroughly prepared, inspected and explained to you prior to delivery.

EXTENDED SERVICE
Your Mitsubishi Motors Retailer can show you how to obtain extended service coverage up to seven years or 100,000 miles after your purchase, with the Mitsubishi Triple Diamond Protection Portfolio.

LEASING AND FINANCING
Many affordable leasing and financing programs are available to meet your needs through Mitsubishi Motors Credit of America, Inc. See your Mitsubishi Motors Retailer for all the details.

We're standing by for your call at 1-888-MITSU2001.

treadlightly!
PARTNER IN EDUCATION, RECREATION & RESTORATION
Respect the environment—tread lightly! Mitsubishi Motor Sales of America, Inc. is an Official Sponsor of "Tread Lightly"™ and supports its principles. MMSA encourages the safe and environmentally sensitive operation of off-highway vehicles (OHVs) to protect the great outdoors.

*See your Mitsubishi Motors Retailer for all limited warranty details.

Build your own customized Montero at mitsubishicars.com.

MITSUBISHI
MOTORS

360°

2001 MONTERO GALLERY

2001 MONTERO BUILD

Main Menu

Montero Menu

TRIM • COLORS • OPTIONS • ACCESSORIES • SUMMARY

Now, don't get too excited. You won't be wielding a blowtorch or anything when you visit mitsubishicars.com, but you can create your very own customized

Montero. You can choose everything from trim, colors, options and accessories. Plus, you can even see how our models stack up against the competition. We can

also help you figure out your monthly payments. All from the comfort of your own warm computer. It's easy. Just click over to mitsubishicars.com.

Apparently, good looks run in the family.

CHARCOAL LEATHER (LIMITED)

TAN LEATHER (LIMITED)

GRAY VELOUR FABRIC (XLS)

TAN VELOUR FABRIC (XLS)

SOLANO BLACK PEARL

SUDAN BEIGE METALLIC

MUNICH SILVER METALLIC

We are Mitsubishi. We build quality cars. We also offer something beyond quality. Because while a car should answer your needs, we believe it should also stir your emotions. We believe in quality, not boredom. That also means building a car you'd feel proud to drive. A car that makes you look and feel good. From the most affordable Mirage to the elegant Diamante, from the sporty Eclipse to the rugged Montero, every Mitsubishi is designed to express power, vitality and confidence. Because, like it or not, cars are a window through which the world views us. Through that window, we can appear dull and lifeless; sensible to the point of boredom. Or we can show the world that our hearts are beating strong and our minds are quick. Mitsubishi takes pride in building cars that ignite the vital spark which often lies sleeping just beneath the surface in each of us. Cars that challenge us to wake up and drive.

