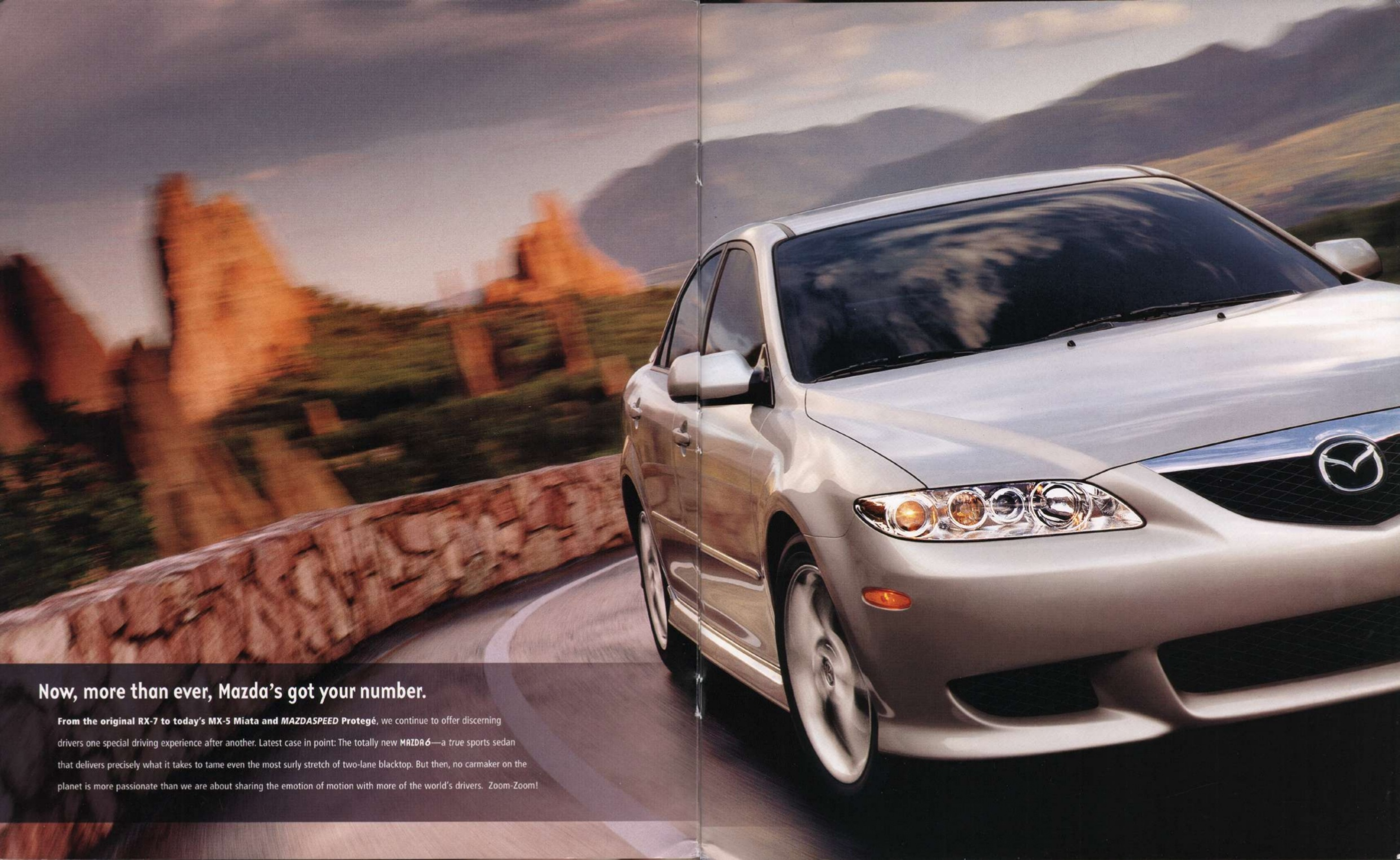


2003 **mazda 6**

zoom-zoom



A silver Mazda6 is shown from a front-three-quarter view, driving on a winding asphalt road. The car is in motion, as indicated by the blurred background and the motion blur on the wheels. The landscape is a desert with rocky hills and sparse vegetation, bathed in the warm, golden light of a sunset or sunrise. The sky is a mix of orange, yellow, and blue. The car's headlights and side mirrors are visible, and the Mazda logo is prominent on the front grille.

Now, more than ever, Mazda's got your number.

From the original RX-7 to today's MX-5 Miata and MAZDASPEED Protegé, we continue to offer discerning drivers one special driving experience after another. Latest case in point: The totally new **MAZDA6**—a true sports sedan that delivers precisely what it takes to tame even the most surly stretch of two-lane blacktop. But then, no carmaker on the planet is more passionate than we are about sharing the emotion of motion with more of the world's drivers. Zoom-Zoom!

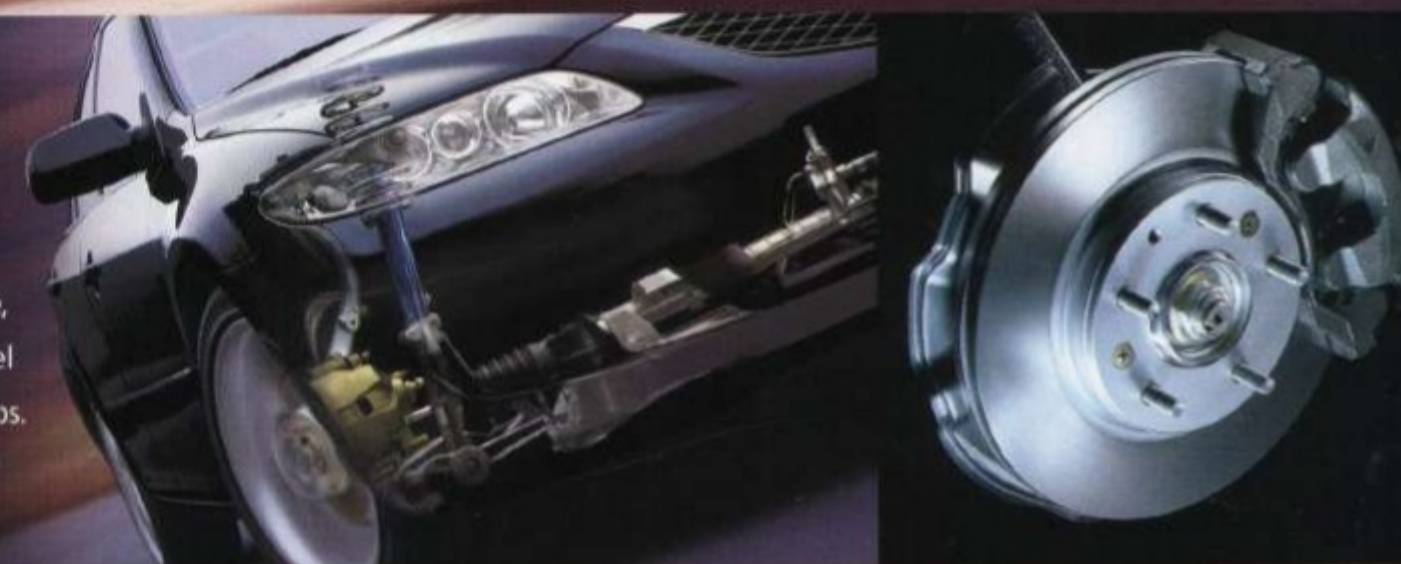
Feel your heart jump when you turned the page? Consider it a free sample.

And here's a small taste of what to expect when you put yourself behind the wheel of a new MAZDA6 for a test drive: Hear that? It's the compelling call of the available 220-hp MZI 3.0-liter V6 engine eagerly waiting to be put to much better use. So go ahead—put your foot down. Feel your heart pounding out its approval? Now, negotiate a quick turn or two. Experience how agile a true sports sedan gifted with an advanced 4-wheel independent suspension can be. Note the precise control and instant feedback of its rack-and-pinion steering. See how swiftly—and surely—the 4-wheel disc brakes respond to any situation. Marvel at how deftly the MAZDA6 is capable of turning even city traffic into your own private fun zone. Then repeat, as necessary, whenever a fresh smile is desired.



Right: No false moves. A sport-tuned double-wishbone suspension, up front, plus an E-type multilink independent rear suspension design endow the MAZDA6 with a well-controlled yet comfortable ride.

Far Right: Real stopping power. Consistent with its sports-car pedigree, MAZDA6 employs 4-wheel disc brakes with 11" rotors, plus a zero-loss-travel brake booster to help ensure quicker response and linear, fade-resistant stops.



Engineered to take you from zero to “wow” in a heartbeat.

Given the MAZDA6's sports-car heritage, instant gratification is clearly its forte. Which means you can count on a predictably quick response to any input you provide via steering wheel or pedal. Both MAZDA6 powerplants—the 220-hp MZI 3.0-liter V6 and the 160-hp MZR 2.3-liter I-4—are sophisticated, all-aluminum designs that utilize variable valve timing to generate acceleration politely described as assertive. Both are also mated to a slick-shifting, 5-speed close-ratio gearbox with a double-cone synchronizer designed to help you make the most of all that potent horsepower. Precise directional control comes courtesy of its sensitive, friction-optimized rack-and-pinion steering. In short, whether you're confronted by a sweeping curve, a twisty stretch of blacktop or a demanding hairpin turn, the MAZDA6 is engineered to serve up generous portions of sure-footed performance. Not to mention driver confidence.

Power up. The two all-aluminum engines offered in the MAZDA6 are advanced designs that utilize variable valve timing to maximize low-end torque and high-rpm power. The MAZDA6s features a potent 220-hp MZI 3.0-liter V6. The MAZDA6i is equipped with a spirited 160-hp MZR 2.3-liter I-4.



Shift priorities. For more freedom of choice when it comes to getting it in gear, consider the MAZDA6's more exhilarating approach to an automatic, the available Sport AT. In Drive, it's a smooth, electronically-controlled automatic transmission. But slip it into manual mode and it grants you the freedom—and fun—of sequentially shifting up or down through the gears, similar to systems found on some race cars.



Your emotions will never again be stuck in neutral.

Exploring the MAZDA6's sports-car-inspired cockpit affords nearly as much satisfaction as its performance on the road.

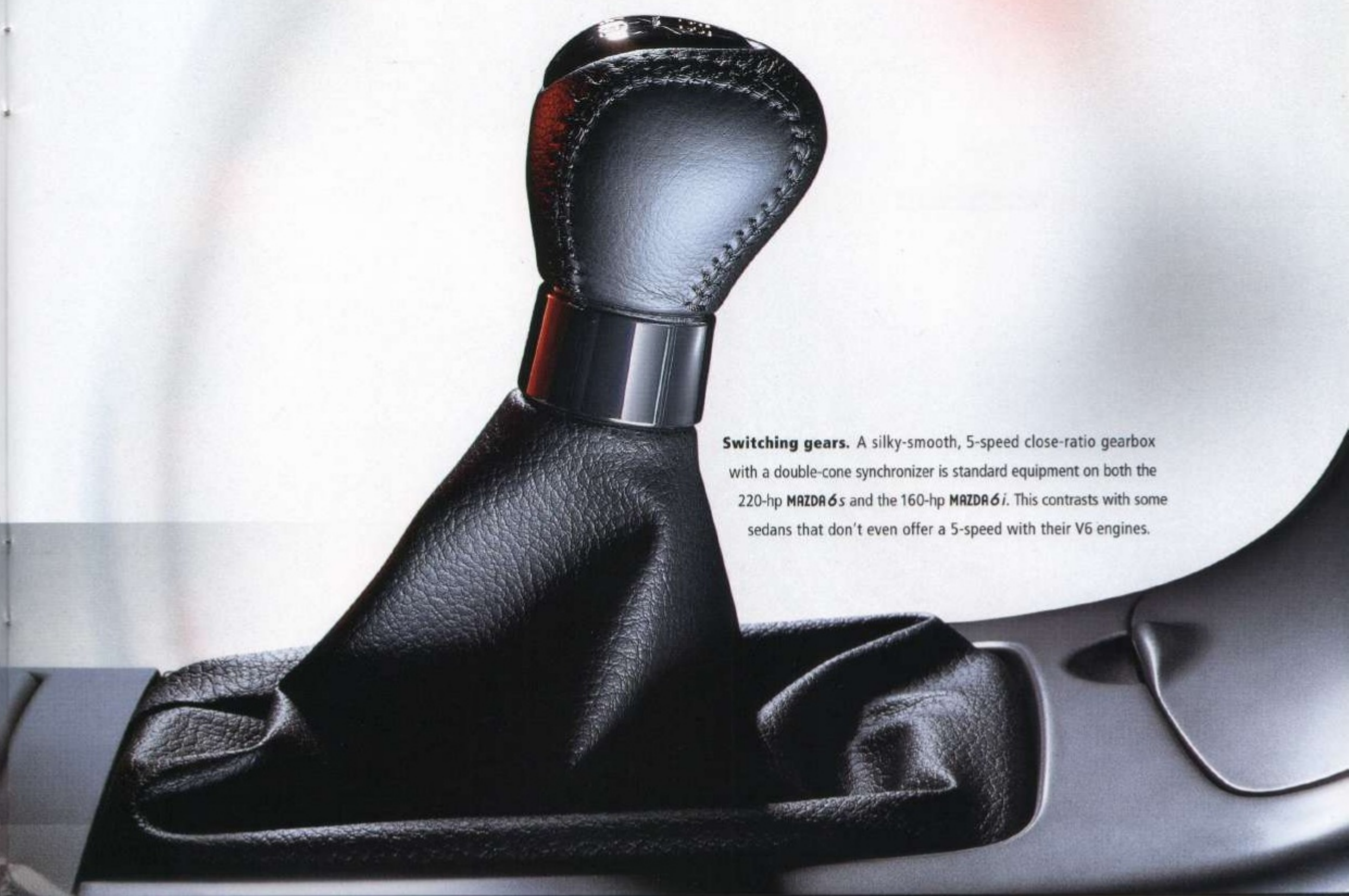
Here, in a tangible salute to its sports-car heritage, a leather-wrapped gearshift knob, steering wheel, and parking brake grip all fall easily to hand.

The instrument cluster, including a large analog tachometer, was designed to communicate the car's vital signs at a glance. Air conditioning, a 6-speaker

AM/FM/CD audio system, and a center console armrest with dual covered storage compartments—all standard—further embellish your driving experience.

And there's no need to keep all the fun to yourself. This willing performer is readily capable of accommodating up to five occupants

in real comfort. After all, the MAZDA6 is a true sports sedan. In every sense of the term.



Switching gears. A silky-smooth, 5-speed close-ratio gearbox with a double-cone synchronizer is standard equipment on both the 220-hp MAZDA6s and the 160-hp MAZDA6i. This contrasts with some sedans that don't even offer a 5-speed with their V6 engines.



Thumbs up. Convenient illuminated steering-wheel-mounted controls for both the cruise control and AM/FM/CD audio system are standard. Which means you don't even have to lift a hand to control either system.




Front and center. Capping off the MAZDA6's uniquely designed dash is a centrally-located, illuminated "command center" screen that displays time, outside temperature, audio system and climate control information at the touch of a button.



You'll savor coming to grips with its sports-car heritage.

The inside scoop on MAZDA6 is that it's a driver's car, first and foremost. From its handsome T-shaped dash, easy-to-grip leather-covered steering wheel and gearshift knob to the distinctive glow of its electroluminescent instrumentation (Sport Package), everything is engineered to enhance driver input—and eliminate driver distractions. A steering wheel that both tilts and telescopes plus an 8-way power driver's seat (standard on the MAZDA6s, available on the MAZDA6i) helps to ensure an ideal driving position. Power windows with a one-touch-down feature simplify life at drive-thrus and toll booths. And well-placed cup holders and storage bins free your hands for more crucial tasks. Like seeing what a sports sedan this advanced can do to your favorite piece of pavement.

A photograph of the interior of a car, showing the front and rear seats. The seats are upholstered in black leather with a horizontal ribbed pattern. The car has a black interior with silver accents on the door handles and the center console. The steering wheel is black with a silver logo in the center. The dashboard and center console are also visible. The text "It also has a sensitive side. Like seats that hug you in a curve." is overlaid on the image.

It also has a sensitive side.
Like seats that hug you in a curve.

Don't worry your head. Front seat passengers will benefit from an extra measure of protection provided by the MAZDA6's whiplash-reducing seat head restraints and safety-belt pretensioners with force limiters.

More good turns. The MAZDA6's steering-wheel design provides both tilting and telescoping adjustments—allowing you to quickly and easily find an ideal driving position.

To serve and protect. In addition to convenience features such as the built-in rear-seat armrest with cup holders, an integral backseat reinforcement "barrier" enhances rear-seat passenger protection from the trunk's contents in the case of a collision.

Its advanced engineering isn't confined to the engine compartment.

From door storage pockets with integral cup holders to a handy remote release for its 60/40 split fold-down rear seatback, the MAZDA6's

surprisingly spacious cabin is home to an abundance of ingenious engineering. Fact is, everywhere your eyes come to rest, you'll see

something specifically designed to enhance your driving experience. Not the least of which are standard power

windows, door locks, and mirrors. Other "unseen" standard features, such as the ventilation

system's integral pollen filter, electronic lockout protection and front and rear side-impact

door beams, help ensure you'll breathe easier—literally and figuratively—driving a MAZDA6.

Wide open spaces. Thanks to the low, compact design of its advanced E-type multilink rear suspension, MAZDA6 boasts an expansive 15.2 cu. ft. of trunk space. Inside the trunk, a convenient seatback release lever allows you to instantly fold the rear seatbacks forward. Thoughtfully recessed trunk hinges don't intrude on storage space and eliminate scratches and dings to suitcases, gear and cargo.




zoom-zoom




Behind the beauty, an equally beautiful approach to safety.

Underneath the MAZDA6's sleek, athletic exterior, you'll find a full array of built-in safety features protecting each occupant. Mazda's "Triple H" construction, for example, adds up to 2mm of additional steel reinforcement to critical frame components for extra strength and impact protection. These key reinforcements serve to create a rigid structure around the passenger cabin that enhances both the vehicle's body integrity and its superb handling. Front and rear crumple zones help to absorb collision energy instead of passing it along to passengers. To complement this impressive matrix of integral safety features, an advanced Anti-lock Brake System (ABS) and Traction Control System (TCS) are also available. The bottom line: Engineered into every MAZDA6, you'll find passenger safety features consistent with a car that delivers exceptional performance.



Safer by the foot. In an accident, MAZDA6's "crushable" pedal assembly is specially engineered to fold away—minimizing the chance of a serious ankle or leg injury to the driver by intrusion of the pedals.



Intelligent protection. New dual-stage front air bags that match inflation speed to an impact's severity are standard—as are 3-point safety belts for all five passengers and international-standard LATCH child-seat anchors for securing child-safety seats. Front seat side-impact air bags and side-curtain air bags (shown) for front and rear passengers are available.

It doesn't cheat the wind so much as outsmart it.

The MAZDA6's taut, strikingly athletic silhouette has been meticulously designed to promote its high-performance agenda. By virtually all means of measurement, both visible and invisible, it is a true sports sedan. The available MAZDA6 Sport Package further accentuates this fact with aggressively sculpted front and rear fascias, side sill extensions, a rear spoiler, 5-spoke 17-inch alloys and more.



It's got performance written all over it.

A distinctive design instantly distinguishes the MAZDA 6 from its peers. Inspiring *Car and Driver* (6/02) to observe:

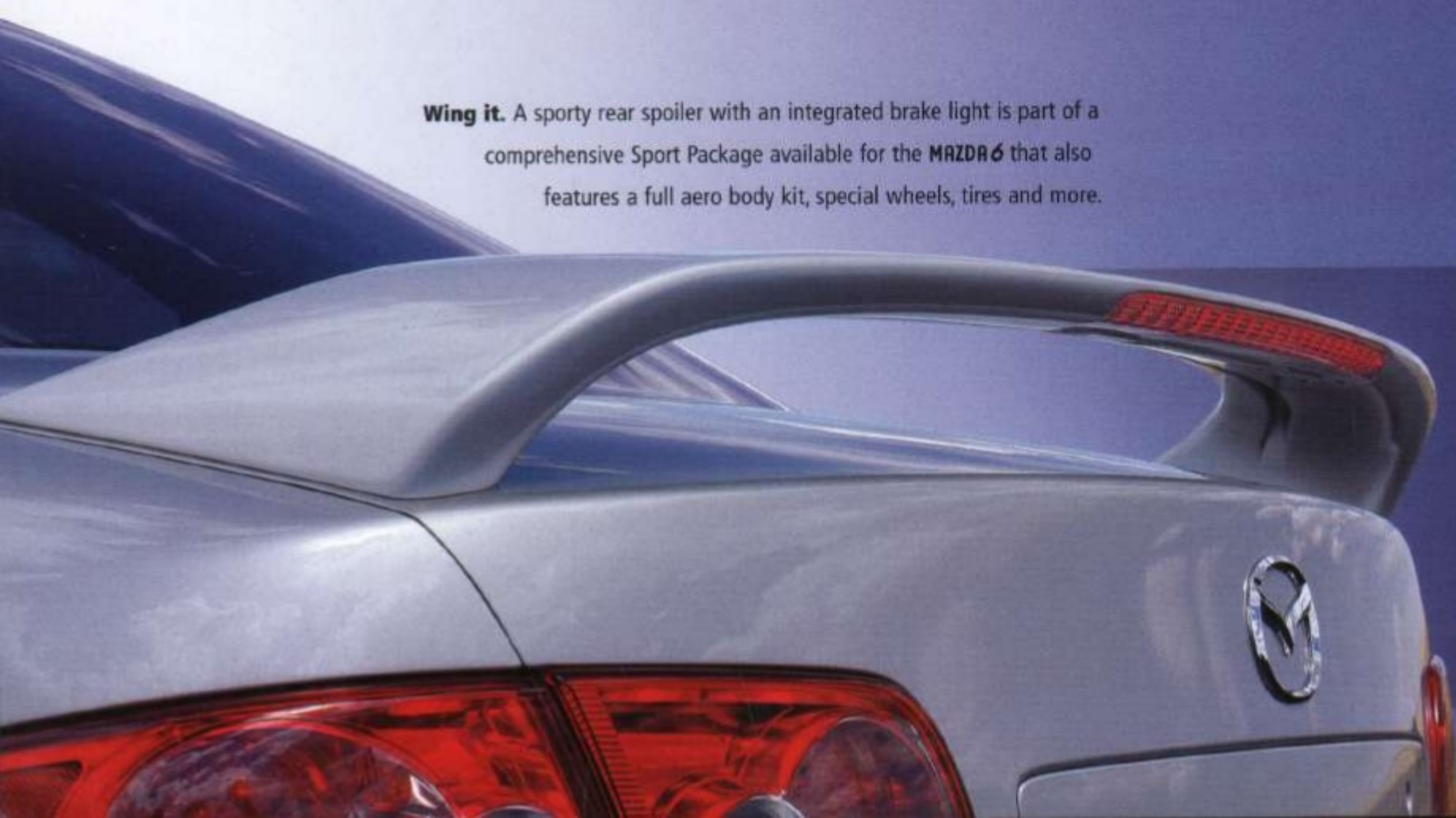
"The stance is aggressive, the proportions dynamic, and the silhouette tense." And also prompting *Road & Track* (7/02) to write:

"Speaking of style, Mazda is right on the money with the 6 sedan." Mix in generous portions of advanced engineering and heart-pounding performance and you suddenly understand why Edmunds.com concluded:

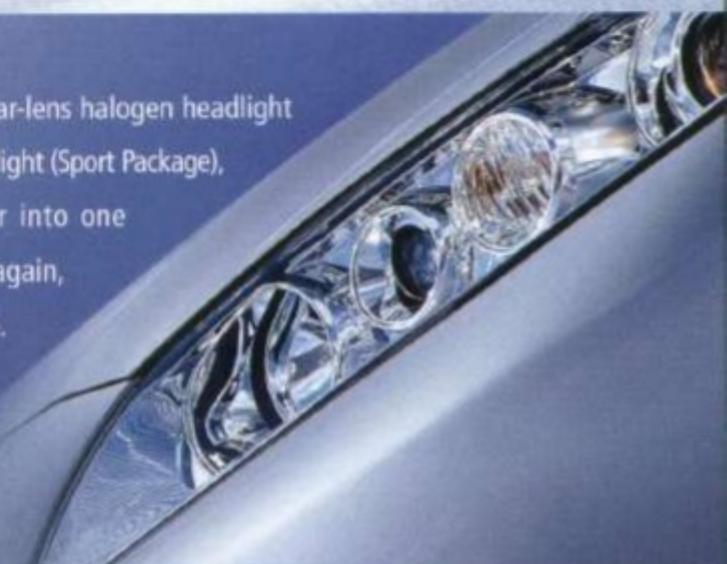
"Overall, driving the car is a blast." So give your right foot something better to do—in a true, authentic, bona fide sports sedan. The MAZDA 6. Drive it. You'll know.

Wing it. A sporty rear spoiler with an integrated brake light is part of a comprehensive Sport Package available for the MAZDA 6 that also features a full aero body kit, special wheels, tires and more.

Parting shots. Dual exhaust outlets provide both a visual and audible signature that telegraphs to all who follow that the MAZDA 6 is a true, authentic, bona fide sports sedan.



Brighter idea. The MAZDA 6's clear-lens halogen headlight assembly integrates headlight, fog light (Sport Package), parking light and turn indicator into one stylishly aerodynamic unit. Once again, form handsomely follows function.





Everyone talks about owning the road.
MAZDA6 gives you two ways to actually take possession.

The MAZDA6's sports sedan debuts with two auspicious models. Complementing the myriad standard features

found on the MAZDA6*i* (above, with optional Premium Package), the MAZDA6*s* (right, with optional Sport Package) adds a

220-hp V6, ABS, traction control, automatic climate control, power driver's seat, antitheft perimeter alarm system and more.

An Exciting Past. An Exhilarating Future.

Innovative. Stylish. Fun-to-drive. For more than 40 years, Mazda has dedicated itself to engineering vehicles for drivers who truly savor the "emotion of motion." That fun-to-drive, connected-to-the-road feeling that can turn a simple drive into an exhilarating experience. Which is why you'll find the "soul of a sports car" in every vehicle we make. From the MX-5 Miata and Protegé5 to Tribute and MPV, Mazdas don't look like—or drive like—anything else on the road. There's a Zoom-Zoom factor in their DNA—part engineering, part spirit. We invite you to share the Mazda driving experience with us soon. You'll quickly discover you're in good company.

A More Liberating Approach To Owner Peace Of Mind.

To ensure your new Mazda continues to be a source of pride and exhilarating performance for years to come, we created the **Mazda Driver's Assurance Plan**. It starts the minute you pick up the keys to your new Mazda. And it protects your new vehicle with a **36-month/50,000-mile "Bumper-to-Bumper" Limited Warranty**. While under warranty, you're also automatically enrolled in our **24-hour Emergency Roadside Assistance** program to help minimize any inconvenience if an unexpected problem should occur on the road. Equally important, should your Mazda ever require a warranty repair, the **Mazda Service Transportation Solution** can typically make sure you have another vehicle to drive. With the Mazda Driver's Assurance Plan, your time and satisfaction come first. And the welcomed results are an exceptional level of customer care and greater peace of mind. For complete details, see your Mazda dealer.

MazdaUSA.com

Mazda RX-8
Coming Spring/Summer 2003



There's no telling how far Zoom-Zoom can take you. For an experience that's about a million miles away from the ordinary, park your Web browser at www.MazdaUSA.com. You'll not only get to preview two of Mazda's hottest new creations, the exciting **MAZDA6** and the adrenaline-pumping **Mazda RX-8**, you'll also get to "build" the Mazda of your dreams. Select any model, color, options and accessories you like—all interactively. We'll even show you what it looks like, help you request a quote, provide a map to your nearest Mazda dealer, and clue you in on special offers. So pay us a visit. And catch up on all the Zoom-Zoom you've been missing.



Rear spoiler, lip type. Smooth design has been carefully integrated with the contours of the trunk lid. Includes center high-mount brake light.

Front air dam. Give your MAZDA6 a lowered ground effects racer look, especially when combined with the available side sill kit and rear bumper skirt kit. Available in all exterior colors.

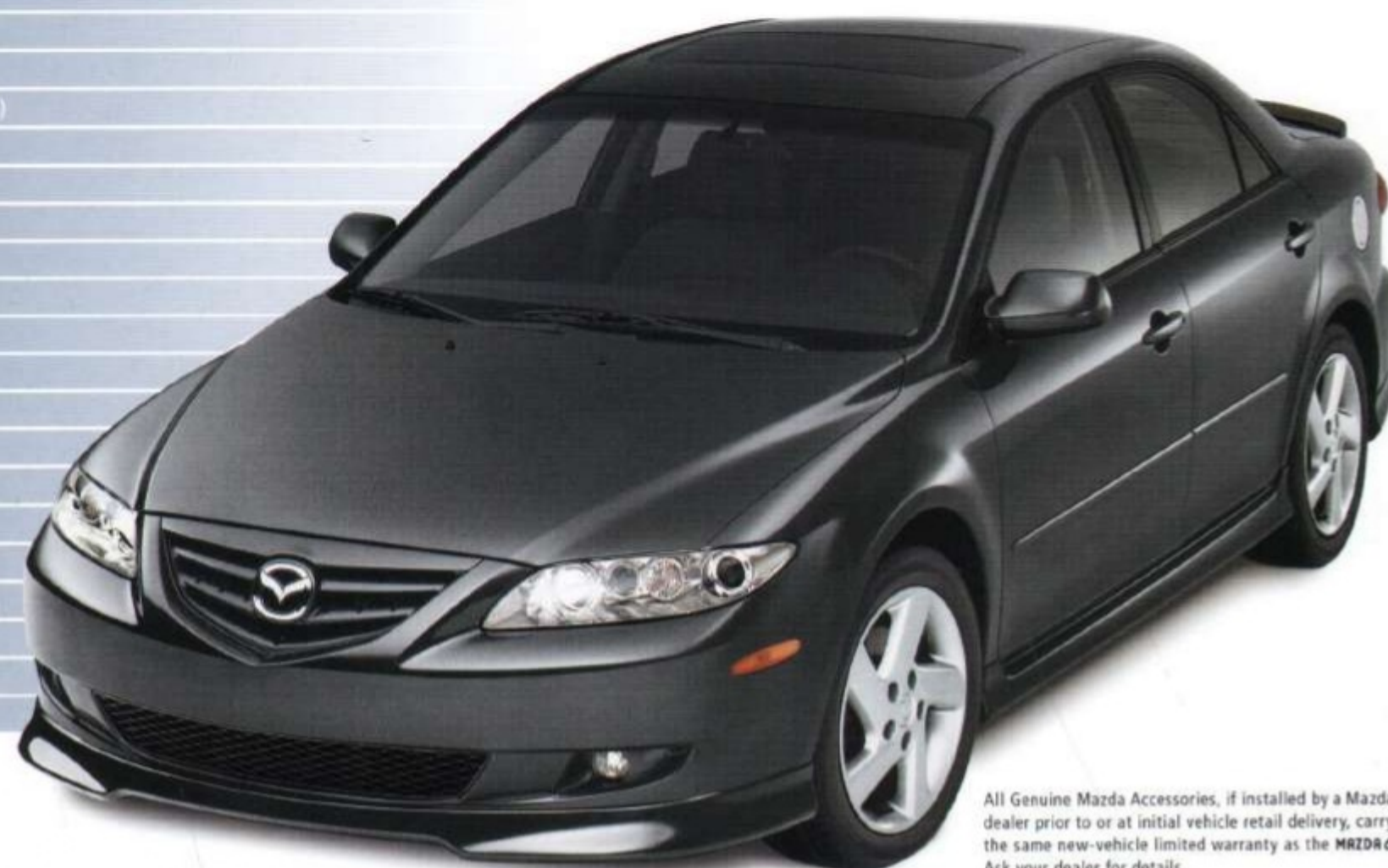


Rear bumper skirt. Add a ground effects look to your MAZDA6 with this rear skirt. Available in all exterior colors.

Compass auto-dimming mirror with HomeLink®. Automatically dims to reduce glare from headlights of cars behind you. Includes HomeLink® remote system and bright LED readout with compass and outside temperature. Replaces interior rearview mirror.



Sport grille
Fog lights
Side sill extensions
Aluminum fuel-filler door (in chrome or satin finish)
Rear spoiler, wing type
Front mask
Chrome rear finisher
Chrome side protector moldings
All-weather floor mats
Rear mud guards
Moonroof wind deflector
Cargo organizer with tray
Cargo tray
Cargo net
Compass auto-dimming mirror
In-dash 6-disc CD changer
Cassette player
MiniDisc player
Alarm shock sensor upgrade
Wheel locks



All Genuine Mazda Accessories, if installed by a Mazda dealer prior to or at initial vehicle retail delivery, carry the same new-vehicle limited warranty as the MAZDA6. Ask your dealer for details.

Features and Specifications

MECHANICAL FEATURES	MAZDA6i	MAZDA6s
2.3L DOHC MZR 16-valve 4-cylinder engine	S	—
3.0L DOHC MZI 24-valve V6 engine	—	S
5-speed manual overdrive transmission	S	S
Power-assisted rack-and-pinion steering with engine-speed sensing variable assist	S	S
Power-assisted 4-wheel disc brakes	S	S
Double-wishbone front suspension with stabilizer bar	S	S
E-type multilink rear suspension with stabilizer bar	S	S

EXTERIOR FEATURES	MAZDA6i	MAZDA6s
16-inch steel wheels with full wheel covers	S	—
16-inch alloy wheels	P	S
P205/60R16 steel-belted all-season radial tires	S	S
Dual body-color power remote mirrors	S	S
Clear-lens halogen headlights with automatic shutoff	S	S
Rear in-glass radio antenna; rear window defogger	S	S
Dual exhaust outlets with bright tips	S	S
2-speed variable-intermittent windshield wipers	S	S
Front mud guards (not available with Sport Package)	S	S

INTERIOR FEATURES	MAZDA6i	MAZDA6s
Dual 2nd-generation 2-stage front air bags*	S	S
Reclining front bucket seats with adjustable head restraints	S	S
Manual driver's seat height adjustment	S	—
8-way power driver's seat with lumbar support	P	S
Fold-down rear armrest with cup holders	S	S
60/40 split fold-down rear seatback w/remote operation	S	S
LATCH child-safety seat anchors in rear seat	S	S
Cloth-trimmed upholstery	S	S
Carpet floor mats	S	S
Covered dash-top storage compartment	S	S
Center console armrest with covered dual storage compartments and 12V power point	S	S
Center instrument display panel (clock, audio, climate control, outside ambient temperature)	S	S
Dual front cup holders with cover	S	S
Power windows with driver's 1-touch-down feature	S	S
Power door locks with 2-stage unlocking	S	S
Remote keyless entry system with 2 transmitters	S	S
Engine-immobilizer anti-theft system	S	S
Anti-theft perimeter alarm system	P	S
Overhead sunglasses holder; front and rear map lights	S	S
Power remote trunk-lid release; trunk light	S	S
Dual illuminated vanity mirrors with flip-up covers	S	S
Tachometer	S	S
Tilt/telescopic steering column	S	S
Leather-wrapped 3-spoke steering wheel w/audio controls	S	S
Leather-wrapped gearshift knob	S	S
Cruise control w/steering-wheel-mounted controls	S	S
Rear-seat heater ducts	S	S
CFC-free air conditioning w/pollen filtration	S	S
Fully automatic climate control	—	S
AM/FM/CD stereo with 6 speakers, digital clock	S	S

OPTIONS AND OPTION PACKAGES	MAZDA6i	MAZDA6s
Sport Package: 17-inch alloy wheels with P215/50R17 tires; fog lights; sport-type front and rear fascias; side sill extensions; rear wing spoiler; black interior trim (cloth or optional leather); electroluminescent gauges with red illumination	0	0
Premium Package: 16-inch alloy wheels; 8-way power driver's seat with lumbar support; perimeter anti-theft alarm	0	—
Bose® Audio Package: 200-watt Bose® sound system; 4 full-range speakers; 2 tweeters; amplified subwoofer; in-dash 6-disc CD changer	0	0
Comfort Package (requires leather-trimmed upholstery†): Heated front seats and door mirrors	0	0
Appearance Package (not available with Sport Package): Front air dam; side sill extensions; rear bumper skirt	O/A	O/A
Chrome Appearance Package: Rear finisher; side protectors	O/A	O/A
Sport AT 4-speed automatic overdrive transmission	0	—
Sport AT 5-speed automatic overdrive transmission	—	0
Anti-lock Brake System (ABS) with Electronic Brakeforce Distribution (EBD); Traction Control System (TCS)	0	S
Front seat-mounted side-impact air bags*; side air curtains with coverage for front and rear seats	0	0
Leather-trimmed upholstery†	0	0
Power sliding-glass moonroof with sunshade	0	0
Sport grille	O/A	O/A
Fog lights	O/A/P	O/A/P
Rear spoiler, wing type	O/A/P	O/A/P
Rear spoiler, lip type (not available with Sport Package)	O/A	O/A
Aluminum fuel-filler door (chrome or satin finish)	O/A	O/A
All-weather floor mats	O/A	O/A
Rear mud guards (not available with Sport Package)	O/A	O/A
Cassette player	O/A	O/A
In-dash 6-disc CD changer	O/A/P	O/A/P
Compass auto-dimming mirror with or without HomeLink®	O/A	O/A
Moonroof wind deflector (requires moonroof)	O/A	O/A
Cargo organizer with tray	O/A	O/A
Cargo tray	O/A	O/A
Cargo net	O/A	O/A
Alarm shock sensor upgrade	O/A	O/A
Wheel locks	O/A	O/A

SPECIFICATIONS	MAZDA6i	MAZDA6s
Engine size and type	2.3L DOHC 16-valve 4-cylinder with Variable Valve Timing dual counter-rotating balance shafts	3.0L DOHC 24-valve V6 with Variable Valve Timing
Horsepower, SAE Net	160 @ 6000 rpm	220 @ 6300 rpm
Torque, SAE Net lb-ft	155 @ 4000 rpm	192 @ 5000 rpm
EPA estimated fuel economy city/hwy (mpg)	manual 25/32 automatic 23/29	manual 20/27 automatic 19/27
Curb weight	manual 3042 lb automatic 3091 lb	manual 3243 lb automatic 3311 lb

S : Standard O : Optional P : Package A : Dealer-installed accessory — : Not available

* Always wear your safety belt and secure children in the rear seat.

† Seating surfaces upholstered in leather except for leather-look vinyl on seat side panels, rear sides of seatbacks and other minor areas.

www.MazdaUSA.com

Wherever you see this symbol, you can get the whole story on our interactive Web site.

PRODUCT CHANGES AND OPTIONS AVAILABILITY: Following publication of this brochure, certain changes in standard equipment, options, prices and the like, or product delays may have occurred which would not be included in these pages. Your Mazda dealer is your best source for up-to-date information. Mazda reserves the right to change product specifications at any time without incurring obligations. Options shown or described in this brochure are available at extra cost and may be offered only in combination with other options or subject to additional ordering requirements or limitations.



ONYX BLACK

- MAZDA6
- MAZDA6 with Sport Package

Beige or Gray: Cloth or Leather
Black: Cloth or Leather



SPEED YELLOW

- MAZDA6
- MAZDA6 with Sport Package

Gray: Cloth or Leather
Black: Cloth or Leather



STEEL GRAY METALLIC

- MAZDA6
- MAZDA6 with Sport Package

Gray: Cloth or Leather
Black: Cloth or Leather



LAPIS BLUE METALLIC

- MAZDA6
- MAZDA6 with Sport Package

Gray: Cloth or Leather
Black: Cloth or Leather



SEPANG GREEN METALLIC*

- MAZDA6
- MAZDA6 with Sport Package

Beige: Cloth or Leather
Black: Cloth or Leather



REDFIRE METALLIC

- MAZDA6
- MAZDA6 with Sport Package

Beige: Cloth or Leather
Black: Cloth or Leather



GLACIER SILVER METALLIC

- MAZDA6
- MAZDA6 with Sport Package

Gray: Cloth or Leather
Black: Cloth or Leather



PERFORMANCE WHITE

- MAZDA6
- MAZDA6 with Sport Package

Beige or Gray: Cloth or Leather
Black: Cloth or Leather



105.3

186.8

56.7



60.6 MAZDA6 i
60.2 MAZDA6 s

70.1



60.6 MAZDA6 i
60.2 MAZDA6 s

70.1

INTERIOR FABRICS



BLACK PERFORATED LEATHER
MAZDA6 with Sport Package



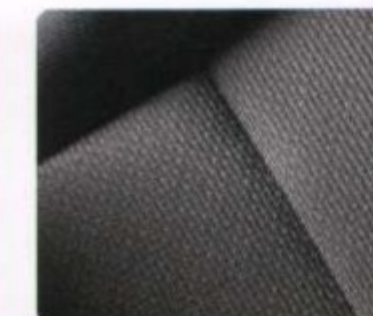
GRAY PERFORATED LEATHER
MAZDA6



BEIGE PERFORATED LEATHER
MAZDA6



BLACK CLOTH
MAZDA6 with Sport Package



GRAY CLOTH
MAZDA6



BEIGE CLOTH
MAZDA6

EXTERIOR DIMENSIONS (inches)	MAZDA6 i	MAZDA6 s
Wheelbase/overall length	105.3/186.8	105.3/186.8
Overall width	70.1	70.1
Overall height	56.7	56.7
Track, front/rear	60.6/60.6	60.2/60.2

INTERIOR DIMENSIONS (inches)	front	rear
Headroom/with moonroof	38.7/37.1	38.0/37.1
Legroom	42.3	36.5
Shoulder room	56.1	54.9

CAPACITIES	MAZDA6 i	MAZDA6 s
EPA passenger volume (cubic feet)	96	96
EPA cargo volume (cubic feet)	15	15
Fuel capacity (U.S. gallons)	18.0	18.0

* Late availability

zoom-zoom



mazda

www.MazdaUSA.com

10% TQM RECOVERED FIBER
ALL POST-CONSUMER WASTE

BETTER DRIVERS
BETTER OF

7755 IRVINE CENTER DRIVE, IRVINE, CA 92618 800-639-1000 ©2002 MAZDA NORTH AMERICAN OPERATIONS PRINTED IN U.S.A. 10/02 (600M) PART NO 9999-92-0106-03