

SUZUKI 2006 grand vitara





life doesn't wait

Let's face it. Life doesn't wait for you. You're either ready to go for it and make it happen...or you're not. For people who get the concept, we built the all-new Grand Vitara. It doesn't just pose as an off-road vehicle, it offers true 4WD engineering that leaves those wannabe SUVs back where they belong. So go ahead. Take the Grand Vitara with you...and really take off.



search engine



What sets the Grand Vitara apart from other SUVs in the class? A standard (yes, standard) V6. That's a 185-hp, 2.7-liter, 24-valve, DOHC V6 engine that gives the Grand Vitara towing capability of up to 3,000 lbs.



The standard Electronic Stability Program (ESP®*), Traction Control System (TCS) and Antilock Braking System (ABS) automatically monitor and adjust the braking system and engine torque and may help prevent understeer and oversteer.

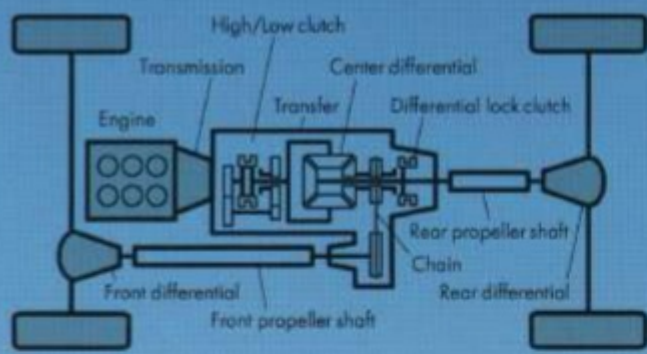


Built right into the center of the dash, the 4WD control knob has four modes for different conditions. High Range is used for most conditions. High Range Lock gives more traction through snow or mud. Low Range Lock kicks in extra low-end traction for very difficult situations. And Neutral frees the central differential, providing less wear and tear should you tow your Four-Mode 4WD Grand Vitara behind your RV. More good news: you won't rack up any miles when you tow this model.

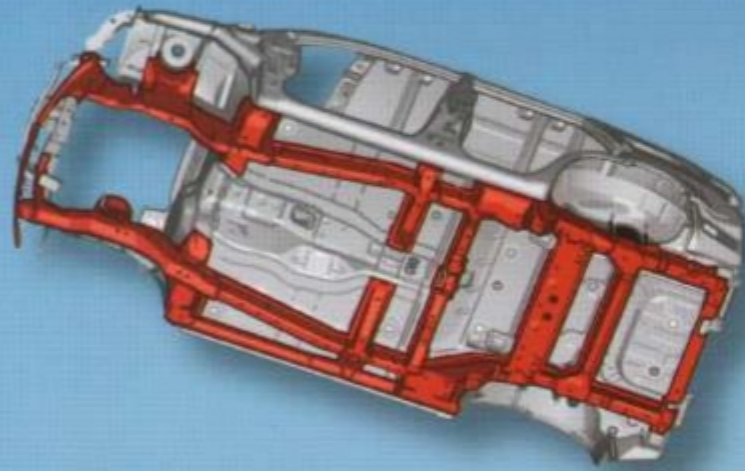


We know your kind. You live life on the go, not on the couch. You're always looking for those uncrowded, yet-to-be-discovered spots to do what you do best. Paddle. Hike. Surf. Sometimes dirt happens, but you don't mind. With the all-new Grand Vitara, you have an authentic SUV with standard V6 power and available 4WD. At the heart of its advanced capabilities is its brand-new, full-time, Four-Mode 4WD System with "active torque split"—an engineering feat that gives you confident, sure-footed performance when you're on the road, and superior, rock-solid traction when you're not. You could say it's smooth and rugged x 4. Want more proof? Turn the page.

Grand Vitara 4WD Premium Package shown with optional equipment and accessories. Some features may not be available on some models. Please refer to Specifications pages for complete information. *ESP® is a registered trademark of DaimlerChrysler AG.



True 4WD engineering is another reason Grand Vitara is the authentic class leader. This no-kidding-around, Four-Mode 4WD System offers a wide range of traction options, every one dedicated to genuine off-road performance (available option).



The superior design of the new built-in ladder frame provides structural rigidity for rock-solid off-road capability and durability.



High ground clearance and short front and rear overhangs permit confident maneuvering over rough trails and uneven surfaces—even the ability to cross shallow streams (4WD model).

own the road even when there isn't one

Why should a lack of pavement stop you from getting where you want to go? With its high ground clearance and built-in ladder frame for superior durability, this is one hardcore SUV. Go punish some rocks. Go humble a stream. If Mother Nature can dish it out, the Grand Vitara can take it. Roads? No thanks. Not necessary.





With outstanding interior space, a choice of seating configurations and all kinds of storage compartments, the Grand Vitara offers you and everyone along for the ride the ultimate in comfort and utility.

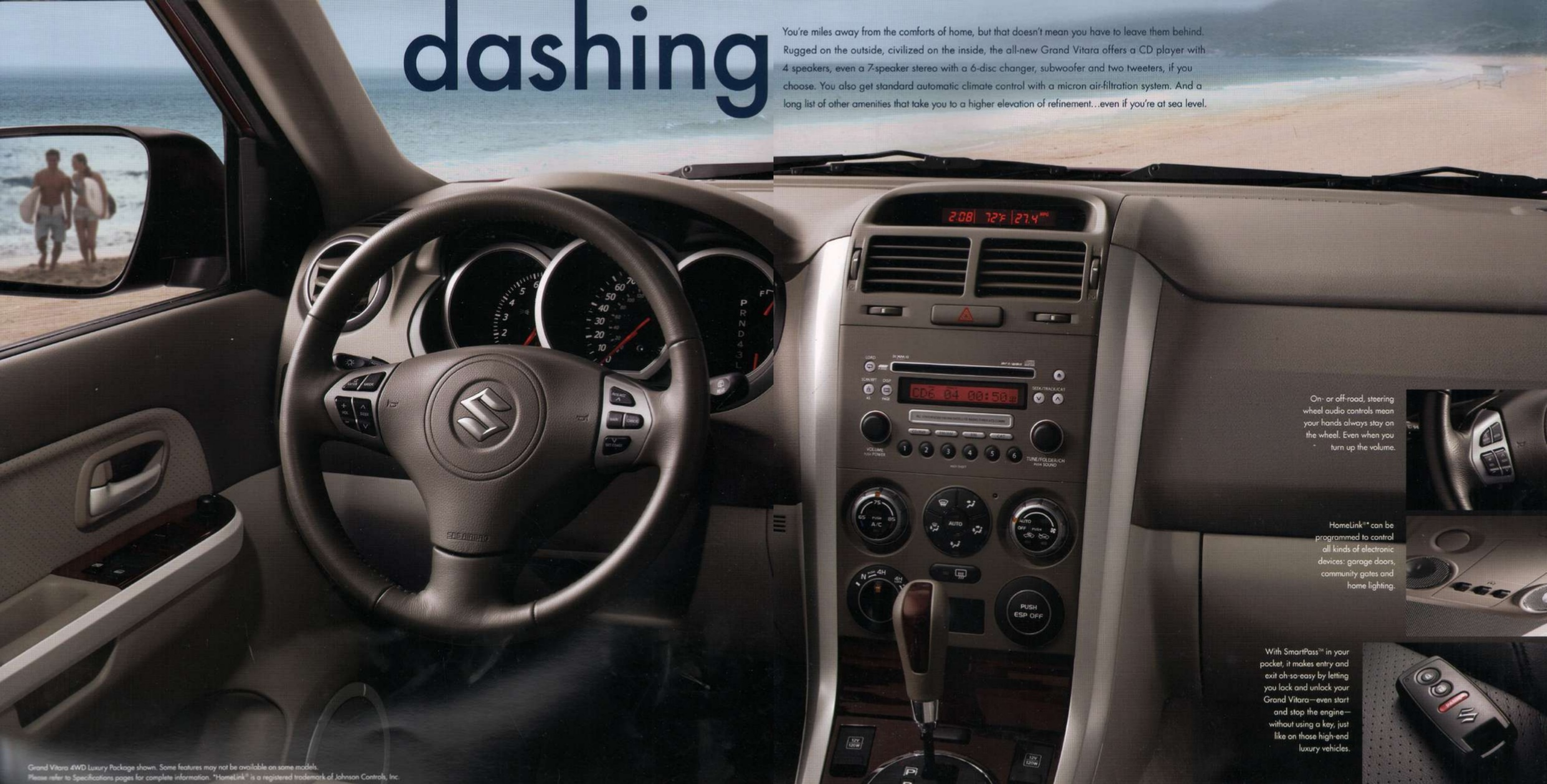
un roughing it

You've conquered the mountain. You've tamed the backcountry. Now it's time to treat yourself to a little R&R. The all-new Grand Vitara gives you refined cabin surroundings. Comfortable seating. Plenty of amenities. And the cargo flexibility to handle all of life's adventures. Off-road ruggedness? Absolutely. Just not in here.

Grand Vitara 4WD Luxury Package shown. Some features may not be available on some models. Please refer to Specifications pages for complete information.

dashing

You're miles away from the comforts of home, but that doesn't mean you have to leave them behind. Rugged on the outside, civilized on the inside, the all-new Grand Vitara offers a CD player with 4 speakers, even a 7-speaker stereo with a 6-disc changer, subwoofer and two tweeters, if you choose. You also get standard automatic climate control with a micron air-filtration system. And a long list of other amenities that take you to a higher elevation of refinement...even if you're at sea level.



On- or off-road, steering wheel audio controls mean your hands always stay on the wheel. Even when you turn up the volume.

HomeLink** can be programmed to control all kinds of electronic devices: garage doors, community gates and home lighting.

With SmartPass™ in your pocket, it makes entry and exit oh-so-easy by letting you lock and unlock your Grand Vitara—even start and stop the engine—without using a key, just like on those high-end luxury vehicles.

Grand Vitara 4WD Luxury Package shown. Some features may not be available on some models. Please refer to Specifications pages for complete information. *HomeLink® is a registered trademark of Johnson Controls, Inc.



good looks
(rugged, of course)

Not every adventure you take involves tents, paddles, skis or ropes. Sometimes your treks include a night on the town or just the everyday commute. Wherever life takes you, you'll arrive in style with the all-new Grand Vitara. Muscular fenders. Sculpted side panels. Aggressive stance. It's rugged, yet refined. Go ahead, blaze your own path through life. Just make sure you look good doing it.

be safe out there



When you're out enjoying the environment, it's good to know the Grand Vitara is built to protect. Out in the wilderness or out on the town, Grand Vitara kicks the safety factor up a couple of notches with two types of features: the kind that give you extra control to avoid problems, and the kind to help protect you if something should happen. Wanderlust is in your DNA. Safety is in ours.

Grand Vitara 4WD Luxury Package shown. Some features may not be available on some models. Please refer to Specifications pages for complete information.



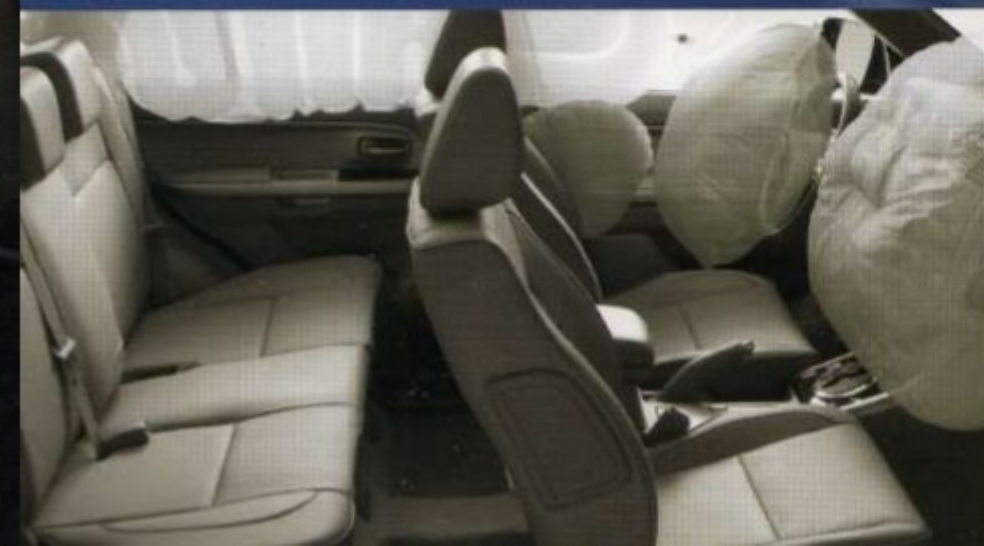
A reinforced cabin structure and side-door impact bars, coupled with impact-absorbing crush zones and a built-in ladder frame, all help control the energy in a crash and protect the occupants. To help reduce head injuries in the unlikely event of a crash, head-impact protection is built into all pillars and upper interior surfaces of the Grand Vitara.



The Grand Vitara comes with a standard Antilock Braking System (ABS) that features Electronic Brake-force Distribution (EBD). This assists you when braking in slippery conditions and helps you maintain steering control.



You always want the other guys to see you. That's why the Grand Vitara comes equipped with Daytime Running Lights (DRL).



The Grand Vitara offers a comprehensive passive safety system that features both side-curtain airbags and driver and front-passenger seat-mounted side airbags to help protect occupants in the event of a collision. In addition, second-generation, advanced dual-stage front airbags deploy with less force depending on need, using an advanced front passenger seat weight-sensing feature.

Grand Vitara 4WD Premium Package shown. Some features may not be available on some models. Please refer to Specifications pages for complete information.

specifications and features



Grand Vitara 4WD

Front Track (in.): 60.6
Rear Track (in.): 61.4
Wheelbase (in.): 103.9
Overall length (in.): 176.0
Overall width (in.): 71.3
Overall height (in.): 66.7
Minimum ground clearance (in.): 7.9
Angle of approach/departure (deg.): 29/26

XSport Package 4WD Shown. See your Suzuki dealer for a full lineup of accessories to add to your vehicle.

Grand Vitara Specifications and Features	Grand Vitara	Grand Vitara Premium	Grand Vitara XSport	Grand Vitara Luxury
Engine				
2.7-liter, 24-valve DOHC V6 engine	S	S	S	S
Horsepower: 185 hp @ 6,000 RPM	S	S	S	S
Torque: 184 lbs-ft @ 4,500 RPM	S	S	S	S
Direct-ignition system	S	S	S	S
Zero-maintenance, self-lubricating timing chain	S	S	S	S
LEV emissions	S	S	S	S
Transmission				
5-speed manual transmission	S	S	—	—
5-speed electronically controlled automatic transmission	O	O	S	S
Four-Mode 4WD System	—	—	O	O
Full-time 4WD System	O	O	—	—
Body/Suspension/Chassis				
Unibody chassis with built-in ladder frame	S	S	S	S
Independent MacPherson strut front suspension	S	S	S	S
Independent multi-link rear suspension	S	S	S	S
Power-assisted rack-and-pinion steering	S	S	S	S
Front-ventilated disc brakes	S	S	S	S
16-inch steel wheels with P225/70 R16 tires	S	—	—	—
16-inch alloy wheels with P225/70 R16 tires	—	S	S	—
17-inch alloy wheels with P225/65 R17 tires	—	—	—	S
Full-size spare tire	S	S	S	S
Exterior Features				
Power tilt-and-slide sunroof	—	—	—	S
Front fog lamps	—	S	S	S
Variable intermittent windshield wipers	S	S	S	S
Power mirrors	S	S	S	S
Heated mirrors	S*	S*	S*	S

Grand Vitara Specifications and Features	Grand Vitara	Grand Vitara Premium	Grand Vitara XSport	Grand Vitara Luxury
Exterior Features (cont.)				
Textured fender flares	—	—	S	S
Roof rails	—	S	S	S
Privacy glass	—	S	S	S
Spare-tire cover	Center Cover	Full Hard Shell	Full Hard Shell	Full Hard Shell
Variable rear wiper with washer	S	S	S	S
Comfort and Convenience				
Automatic climate control with micron air-filtration system	S	S	S	S
SmartPass™ keyless entry and ignition	—	—	S	S
Remote-entry system	S	S	S	S
HomeLink® Integrated Remote-activation System	—	—	—	S
Power windows w/illuminated auto-down driver's-window switch	S	S	S	S
Power door locks	S	S	S	S
Cruise control	S	S	S	S
Leather-wrapped steering wheel	—	—	—	S
Rear-seat heater ducts	S	S	S	S
Adjustable steering column	S	S	S	S
Cup holders, front and rear	S	S	S	S
Map lights	S	S	S	S
Adjustable center armrest with storage compartment	S	S	S	S
Sunglasses holder	S	S	S	S
12-volt power outlets, front and rear	S	S	S	S
Retractable cargo cover	S	S	S	S
Cargo-area below-deck storage bin	S	S	S	S
Cargo-area storage pockets	S	S	S	S
Cargo-area light	S	S	S	S

Grand Vitara Specifications and Features	Grand Vitara	Grand Vitara Premium	Grand Vitara XSport	Grand Vitara Luxury
Comfort and Convenience (cont.)				
Automatic lighting system	S	S	S	S
Rear window defroster	S	S	S	S
Digital clock with outside-temperature and fuel-consumption gauges	S	S	S	S
Audio Systems				
AM/FM/CD/MP3/WMA, XM-Ready stereo with 4 speakers	S	—	—	—
AM/FM/MP3/WMA, XM-Ready stereo w/in-dash 6-disc CD changer	—	S	S	S
7-speaker audio system including 2 tweeters and subwoofer	—	S	S	S
Steering wheel integrated audio controls	S	S	S	S
Seating				
Leather-trimmed seating surfaces	—	—	—	S
Heated front seats	—	—	—	S
Reclining 60/40 split tumble-fold rear seatbacks with adjustable headrests	S	S	S	S
6-way adjustable driver's seat	S	S	S	S
Safety Features				
Antilock Braking System (ABS) with Electronic Brake-force Distribution (EBD)	S	S	S	S
Electronic Stability Program (ESP®) including Traction Control System (TCS)	S	S	S	S
Advanced dual-stage front airbags Supplemental Restraint System (SRS)	S	S	S	S
Front and rear side-curtain airbags	S	S	S	S
Front seat-mounted side airbags	S	S	S	S
3-point driver and front-passenger safety belts with shoulder-height adjustment	S	S	S	S

Grand Vitara Specifications and Features	Grand Vitara	Grand Vitara Premium	Grand Vitara XSport	Grand Vitara Luxury
Safety Features (cont.)				
3-point rear safety belts	S	S	S	S
Front-seatbelt pretensioners	S	S	S	S
Front and rear side-impact door beams	S	S	S	S
Rear child-seat LATCH system (Lower Anchors and Tethers for Children)	S	S	S	S
Rear-door child-safety locks	S	S	S	S
Daytime Running Lights (DRL)	S	S	S	S
Interior Dimensions				
Headroom, front/rear (in.)	40.0/38.2	40.0/38.2	40.0/38.2	38.2/38.2
Legroom, front/rear (in.)	41.3/37.2	41.3/37.2	41.3/37.2	41.3/37.2
Shoulder room, front/rear (in.)	56.3/54.9	56.3/54.9	56.3/54.9	56.3/54.9
Hip room, front/rear (in.)	55.5/44.0	55.5/44.0	55.5/44.0	55.5/44.0
Capacities				
Seating	5	5	5	5
Interior volume (cu. ft.)	125.4	125.4	125.4	122.9
Cargo index (SAE), rear seat up/down (cu. ft.)	24.4/68.9	24.4/68.9	24.4/68.9	23.8/67.3
Tow rating (lbs.)	3000	3000	3000	3000
Fuel capacity (gal.)	17.4	17.4	17.4	17.4
Curb Weight				
Manual, 2WD/4WD (lbs.)	3452/3582	3452/3582	—	—
Automatic, 2WD/4WD (lbs.)	3505/3682	3505/3682	3505/3682	3505/3682
EPA Fuel-economy Estimates				
Manual city/highway (mpg) 2WD, 4WD	18/23	18/23	—	—
Automatic city/highway (mpg) 2WD	19/24	19/24	19/24	19/24
Automatic city/highway (mpg) 4WD	19/23	19/23	19/23	19/23

colors

Interiors

□ - beige cloth
■ - beige leather

□ - black cloth
■ - black leather



Silky Silver Metallic □■



Black Onyx Pearl □■



Shining Red Pearl □■



White Pearl □■



Racy Red □■



Clear Beige Metallic □■

AMERICA'S #1 WARRANTY

100,000 MILES • NO DEDUCTIBLE • FULLY TRANSFERABLE

100,000-mile/7-year Powertrain Limited Warranty

Every 2006 Suzuki comes standard with America's #1 Warranty: a fully transferable, \$0-deductible, 100,000-mile/7-year powertrain limited warranty.

Duration

Covers 100,000 miles or 7 years, whichever comes first. This provides owners over 14,000 miles of coverage per year.

Fully Transferable

Can be transferred from owner to owner, adding value at the time of resale or trade-in.

No Deductible

If any covered repairs are necessary within 100,000 miles or 7 years, there is zero charge for parts and labor.

america's #1 warranty

the smart part of life's adventure

America's #1 Warranty is the only 100,000-mile warranty, with no deductible, that is fully transferable for the life of the warranty, so resale value stays higher. Suzuki also gives you 24-hour Roadside Assistance for 36,000 miles or 36 months, which says a lot about our quality and dependability. Live life's adventure with the peace of mind of Suzuki.

Suzuki's New Vehicle Limited Warranty: Covers all components of the vehicles as supplied by Suzuki for 36 months or 36,000 miles, whichever comes first. The battery is covered for 24,000 miles. There is no deductible. Any repairs to correct defects in materials will be made with no charge for parts or labor. Should original body sheet-metal panels develop perforation due to corrosion, they're covered for 36 months, with no limit on mileage. Tires are covered by a separate warranty from the tire manufacturer.

Roadside Assistance Program: Covers any new Suzuki vehicle during the 36,000-mile/3-year New Vehicle Limited Warranty period. Roadside Assistance is available 24 hours a day, 365 days a year, in the U.S. and Canada.

Courtesy Vehicle Program: The Warranty Repair Courtesy Vehicle Program is administered through Suzuki dealers and Enterprise Rent-A-Car. If a Suzuki vehicle is rendered inoperable, unsafe or illegal to operate due to a defect in materials or workmanship, and is required to stay overnight at a Suzuki dealer to complete a warranty repair during the 36,000-mile/3-year New Vehicle Limited Warranty period, your Suzuki dealer will provide a courtesy rental vehicle for up to five days through Enterprise Rent-A-Car.



Azure Gray Metallic □■

2006 SUZUKI model line

Grand Vitara



Forenza



Forenza Wagon



KiX



Verano



Aerio SX



Aerio Sedan



Aerio



suzuki.com

© American Suzuki Motor Corporation 2005 • P.O. Box 1100, Brea, CA 92822-1100 • 1-877-MY-SUZUKI (1-877-697-8985)

Drive responsibly: Buckle up for safety—don't drink and drive. WARNING: Sport Utility Vehicles handle differently from ordinary passenger cars. Avoid sharp turns and abrupt maneuvers. Always wear your seatbelt. For specific details, please read your Owner's Manual for on- and off-road driving tips. To avoid injury from an airbag, always place children 12 years old and under in the rear seat; always move both driver and passenger seats as far back from airbag as practical; never transport a child in a rear-facing child seat in the front seat; and always use the seatbelts and buckle up properly. Always keep cargo loads within specified weight limits; distribute cargo evenly and secure it from shifting. Specifications and equipment based on information available at time of printing, subject to change without notice and may differ in each sales area. All model comparisons based on manufacturers' websites at time of printing. Some vehicles shown with optional equipment. For more details on 2006 options, accessories, warranty and specifications, contact your local Suzuki dealer. Suzuki, the "S" logo, and Suzuki model names are Suzuki trademarks or ®. "Tread Lightly®" on public and private land. Along with concerned conservationists everywhere, Suzuki urges you to preserve your future off-road driving opportunities by showing respect for the environment, local laws and the rights of others. Whether you buy or lease a Suzuki vehicle, American Suzuki Financial Services can assist you with the process. Ask your dealer which lease or purchase plan best suits your needs.

