

HIGHLANDER 08



moving forward

TO CREATE SOPHISTICATION AND COMFORT,
EVERYTHING COUNTS: THE PLACEMENT OF
A DIAL, THE TEXTURE OF A SURFACE, THE
EASE OF A FEATURE. EVERY CALIBRATION
SMOOTHS THE RIDE, AIDS PERFORMANCE
OR ENHANCES YOUR SAFETY. THE ALL-NEW
HIGHLANDER. MOVING FORWARD.



Sport shown in Magnetic Gray
Metallic with accessory roof rail cross bars.

Inside and out, Highlander has been totally redesigned to achieve new levels of comfort, convenience and style. The all-new, larger Highlander helps you in ways that let you see what the future holds. Ways that reveal what a difference a thoughtfully integrated idea can make. Ways that make you see everything in a new light. Once you've experienced the 2008 Toyota Highlander, you'll wonder how you ever lived without one.

The all-new Highlander makes a strong design statement, expressing a forceful, forward-looking presence from every angle. Highlander is here to raise the bar of refinement and sophistication with expressive surfaces and dynamic forms. At first glance, you might not think there's a 7-passenger¹ vehicle with available 4-wheel-drive capability² wrapped inside the sleek, aerodynamic silhouette. But the all-new Highlander defies convention.



Limited shown in Classic Silver Metallic.



1. Highlander Hybrid standard seating accommodates five, seating for seven is available. 2. Electronic On-Demand 4WD with intelligence (4WD-i) standard on Hybrid models.

The interior of the all-new Highlander is a precisely designed environment, innovatively arranged to create a space that gives you maximum versatility. And like its exterior design, the interior of the all-new Highlander expresses strength and intelligence. Inside the cabin, critical inches of leg room and cubic feet of cargo space add up to one thing: accommodations that give Highlander a new level of seating comfort and ergonomic efficiency.



Limited shown in Classic Silver Metallic with available moonroof and accessory roof rail cross bars.



Sport interior shown in Ash leather with available JBL® AM/FM 6-disc in-dash CD changer, front dual zone automatic climate control, rear automatic digital climate control, rear-seat DVD entertainment system and accessory carpeted floor mats.



EXTENSIVE COMFORT
A leg-support adjustment system is available for the driver's seat cushion.¹ It extends the seat cushion to add critical inches of thigh support, making Highlander even more comfortable.



STADIUM SEATING
Highlander comes with a third-row bench seat² that comfortably accommodates two passengers. Highlander's engineers used a concept called stadium seating – each row rises higher than the previous row – to enhance the sense of space for those riding in the third row. The seat cushion and seatback are wider and the seatback taller to achieve exceptional seating comfort. And with available rear air conditioning, everyone can enjoy quiet contentment.

1. Standard on Limited. Available on Hybrid Limited. Not available on Highlander grade, Sport or Highlander Hybrid. 2. Available on Highlander Hybrid.

The all-new Highlander raises the standard for seating versatility and cargo carrying. The whole interior is longer, by four inches. That means there's more leg room between the front- and second-row seats, and between the second- and third-row seats. There's larger cargo volume. The interior is wider, too, for more hip room. And its height has been increased to enhance seating posture. They even made room for more cup holders – 10 in total. And you can choose from a wide variety of fabric and trim color options.



CARGO CAPACITY³
Available second-row-seat one-touch fold-flat levers⁴ make it easy to configure Highlander for cargo-carrying duty. Open the back door, pull the levers located in the cargo area and the second-row seats fold flat on their own.



Sport interior shown in Ash leather.

CENTER STOW™
An ingenious Center Stow™ system maximizes the versatility of Highlander, allowing you to comfortably seat up to seven passengers. A removable Center Stow™ second-row storage console is positioned between two captain's chairs. Remove it, and you quickly create walk-through access to the third-row seat! The Center Stow™ seat or console stores beneath the front console when not in use. Lock the seat into place between the captain's chairs and fold it open, and you now have a configuration that lets you seat seven passengers.



Sport interior shown in Black leather with available front dual zone automatic climate control, rear automatic digital climate control, voice-activated DVD navigation system² with JBL® 4-disc in-dash CD changer and rear-seat DVD entertainment system.



Highlander grade interior shown in Sand Beige.



SEATING ARRANGEMENTS
A. 7-passenger with second-row bench seat. **B.** 6-passenger with second-row captain's chairs and Center Stow™ console. **C.** 6-passenger with second-row captain's chairs and walk-through. **D.** 5-passenger with third-row seat folded. **E.** 5-passenger with Two-Row Seating Package. **F.** 2-passenger with second- and third-row seats folded.

1. Available on Highlander Hybrid. 2. See footnote 14 in Disclaimers section. 3. See footnote 42 in Disclaimers section. 4. Available on Highlander Hybrid, not available on Highlander grade.

The sumptuous interior is designed to elevate the experience of driving. Everything that surrounds you, from the elegantly illuminated instrumentation to subtle tones and textures of surface materials, is a delight to your senses. Settle into the deeply contoured driver's seat or front passenger seat and take note of its size and comfort. The seat cushion length, seatback width and seatback height have all been increased. Reach your hand to the new 4-spoke tilt/telescopic steering wheel. It's available with mounted controls that let you adjust the audio,¹ climate,^{1, 2} available hands-free functions for Bluetooth^{®1, 3}-compatible cell phones and voice-activated DVD navigation system.^{4, 5}



Limited interior shown in Ash leather with available voice-activated DVD navigation system^{4, 5} with JBL[®] AM/FM 4-disc in-dash CD changer with hands-free phone capability via Bluetooth^{®5} wireless technology and multi-stage heated front seats.

LOGICAL CONTROLS
Look at the size, shape and placement of the switches and knobs on Highlander's redesigned instrument panel. There's a level of refinement and logic that's evident, a natural order that helps you activate each control with ease.



Sport interior shown in Ash leather.

BACKUP CAMERA^{1, 6}
Highlander's available backup camera augments large sideview mirrors by displaying what it sees behind you on the available dash-mounted multi-information display.⁷

1. Not available on Highlander grade. 2. Standard on Limited. Requires available front dual zone automatic climate control on Sport and Hybrid models. 3. See footnote 13 in Disclaimers section. 4. Not available on Highlander grade or Highlander Hybrid. 5. See footnote 14 in Disclaimers section. 6. See footnote 15 in Disclaimers section. 7. See footnote 16 in Disclaimers section.



With its 3.5-liter 270-hp V6 engine and available full-time 4WD system, the all-new Highlander offers responsive performance and sure-footed traction. But what truly distinguishes Highlander is the feeling of ease it imparts to its driver and passengers. The seamless integration of advanced technologies helps turn challenging situations such as hill starts and driving downhill on slippery surfaces into moves you can make with confidence.



LET IT SNOW
Driving Highlander on a snow-covered road? Press a button and the transmission automatically adjusts its response to help make driving on slippery surfaces more secure. When you accelerate from a standstill, the transmission will start in second gear to help prevent the drive wheels from spinning.



Sport shown in Blue Streak Metallic with accessory roof rail cross bars.

HILL START ASSIST CONTROL (HAC)¹

Starting off on a steep or slippery incline can be tricky. Take your foot off the brake to press the accelerator, and the vehicle's tendency is to roll backward. But Highlander comes with a feature called Hill Start Assist Control (HAC), which helps ensure smooth hill starts by applying brake

pressure to all four wheels for approximately two seconds in order to hold Highlander and prevent rollback. To employ, the driver must depress the brake with sufficient force and wait for a beep, indicating the system is engaged.



DOWNHILL ASSIST CONTROL (DAC)^{1,2}

Controlling a vehicle during a steep descent can also be a challenge. Engine braking alone is not always sufficient to maintain a constant speed, and any application of the brakes can induce a skid. But with available Downhill Assist Control (DAC), Highlander helps the driver

negotiate steep, low-speed descents confidently. Automatically controlling the brake force at all four wheels, DAC helps reduce wheel lockup, thus ensuring steering performance and enhancing the driver's ability to avoid obstacles and change direction.

1. See footnote 39 in Disclaimers section. 2. 4WD Highlander models only. Not available on Hybrid models.

When it comes to achieving a higher level of active and passive safety engineering, everything counts. The 2008 Highlander comes with one of the most comprehensive lists of standard safety features in its class, including seven airbags.¹ It also comes standard with the Star Safety System,² a combination of highly advanced traction, braking and stability control technologies to help the Highlander driver avoid an accident in the first place.



Demo not intended to replicate actual airbag deployment.

SEVEN STANDARD AIRBAGS

A. Highlander's passive safety systems include advanced Supplemental Restraint System (SRS) front airbags for the driver's and front passenger seats. **B.** SRS front seat-mounted side airbags¹ also help provide protection to the driver and front-seat passenger in the event of certain types of side-impact collisions. **C.** New for 2008 is a knee airbag for the driver.¹ **D.** Roll-Sensing Curtain Airbags, or RSCA,¹ help provide protection for all three rows of seats not only in a side collision, but in the event of a vehicle rollover. **E.** The front seats also incorporate newly developed active headrests.² The occupant's lower back applies pressure that moves the headrest up and forward in the event of certain rear-end collisions.

1. See footnote 35 in Disclaimers section. 2. See footnote 36 in Disclaimers section. 3. See footnote 28 in Disclaimers section.



VEHICLE STABILITY CONTROL (VSC)³

An Enhanced Vehicle Stability Control (VSC) helps prevent the vehicle from losing traction while cornering in wet or other challenging conditions. To help improve control in these situations, VSC automatically regulates engine output and brake-force distribution to the wheels. In addition, the system simultaneously provides electric power steering (EPS) assist torque to help the driver steer in the direction that provides greatest control.



TRACTION CONTROL (TRAC)

TRAC is a traction-control system that uses Highlander's advanced braking technologies to help control wheelspin when starting or accelerating on a slippery surface. TRAC is supplemented by the Enhanced VSC's steering torque-assist control. This combination of features helps maintain appropriate driving force during straight-line acceleration and offset left-right vehicle pull caused by differences in traction between the left- and right-side wheels.





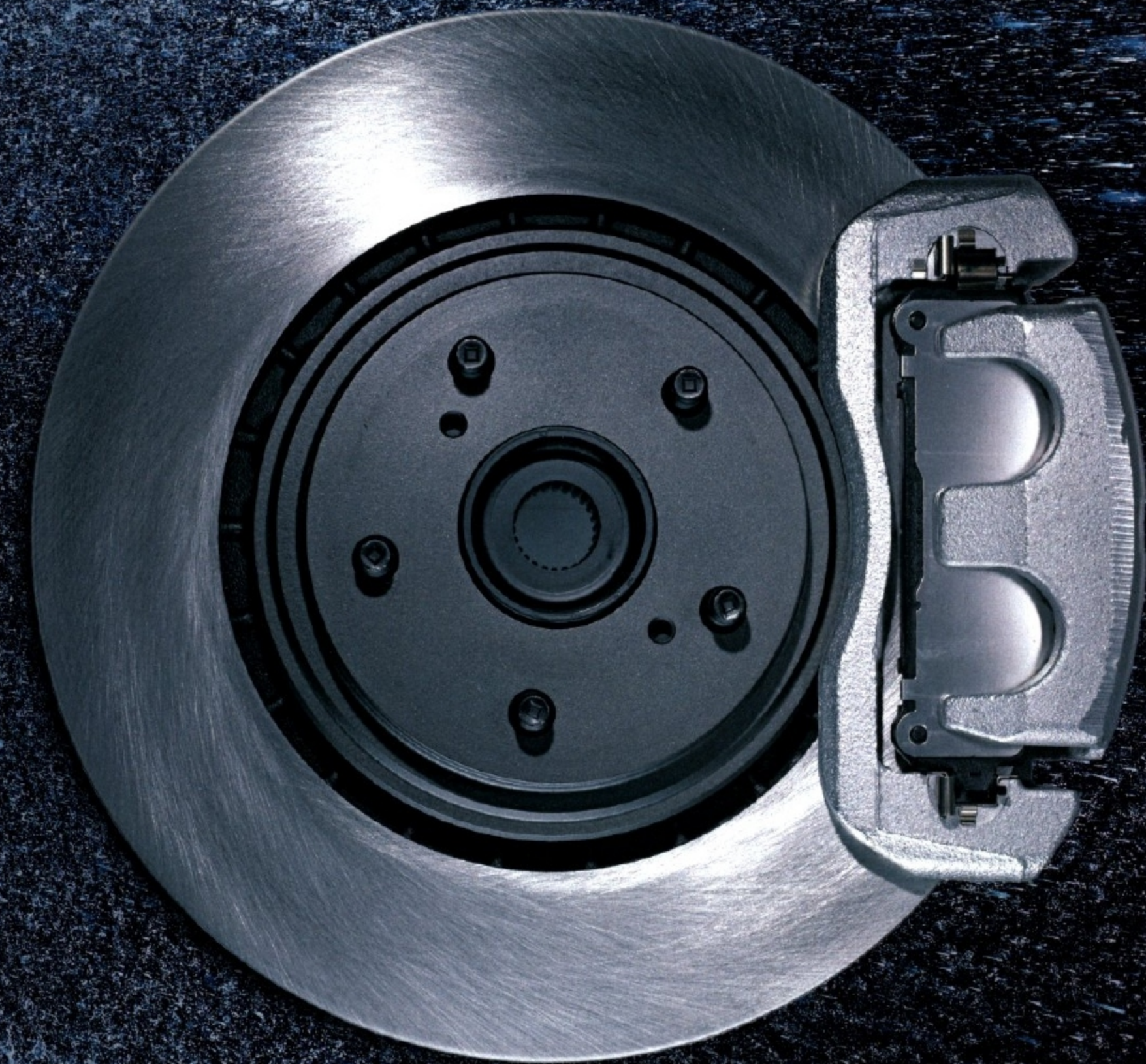
Hybrid Limited shown in Iced Amethyst Mica with available moonroof and accessory roof rail cross bars.

Highlander's Anti-lock Brake System (ABS) is an important element of its active safety capability. To help prevent the wheels from locking up and causing the vehicle to skid on a slippery surface, ABS automatically "pumps" the brakes. By preventing wheel skid, ABS helps preserve the ability to steer the vehicle around a hazard and potentially avoid a collision.

Enhanced VSC¹ supplements conventional ABS with assist torque for the electric power steering (EPS). Imagine this driving scenario: You're braking in a straight line on a road surface with different left-right traction characteristics — asphalt with grip under the left-side tires, slippery snow under the right, for example. The differences in traction can affect the brake response, causing a vehicle to pull toward the side with better traction. Enhanced VSC works with EPS to automatically respond to differences in the left-right brake force. If it detects left-right vehicle pull, the system seamlessly adjusts power-steering assist to help the driver counteract vehicle pull with minimal effort.

Electronic Brake-force Distribution (EBD) works with ABS to optimize the distribution of brake force between the front and rear wheels, based on driving conditions and vehicle load. When braking during cornering, EBD also distributes brake force between the left and right wheels to help maintain vehicle control.

Brake Assist² helps the driver during panic braking. If the brake pedal is suddenly and rapidly depressed, the system detects this and Brake Assist helps the driver by generating a greater brake force.



1. See footnote 28 in Disclaimers section. 2. See footnote 33 in Disclaimers section.

Introducing the next-generation Highlander Hybrid, available fall 2007. With an advanced Hybrid Synergy Drive® system upgraded and refined for 2008, the all-new Highlander Hybrid is proof that everything counts. It offers both more power and more intelligence to maximize fuel economy. Our engineers were able to increase the output to 270 net horsepower, yet fuel economy ratings for the all-new, larger Highlander Hybrid are an impressive 27 mpg city/25 mpg highway.¹



Highlander Hybrid shown in Wave Line Pearl with available Popular Plus Package and accessory roof rail cross bars.



VEHICLE DYNAMICS INTEGRATED MANAGEMENT (VDIM)²
The all-new Highlander Hybrid also features Toyota's advanced Vehicle Dynamics Integrated Management (VDIM) stability system. A decisive leap forward in the evolution of active safety engineering, the system integrates three technologies that leverage Hybrid Synergy Drive®'s electric power source. VDIM's integration of Electronic On-Demand 4-wheel drive system with intelligence (4WD-i)³, electronic brake and throttle control, and an electronically controlled active-steering system means Highlander Hybrid drivers possess the most advanced transportation technology in its class.



INSTRUMENTS OF CHANGE
The instrumentation on Highlander Hybrid doesn't merely tell you how fast you're going. It shows you the mode you're driving in, and lets you see just how economically you're driving as Hybrid Synergy Drive® uses the most efficient source of power.



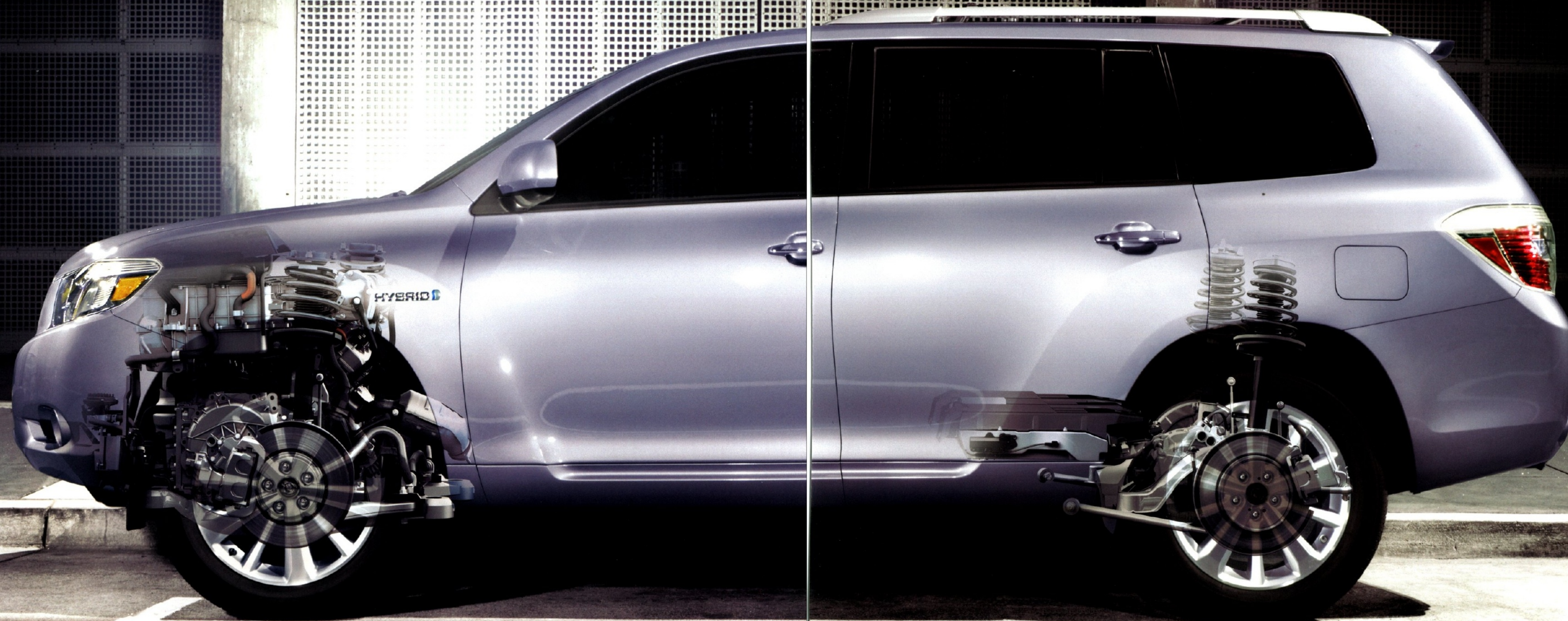
Hybrid Limited interior shown in Ash leather with available dual zone automatic digital climate control and voice-activated DVD navigation system⁴ with JBL® AM/FM 4-disc in-dash CD changer.



EV MODE⁵
In EV mode, Highlander Hybrid runs exclusively on its electric motor. It's intended for low-speed driving situations where you're in an enclosed structure – inching your way into an underground parking structure, for example. By operating the vehicle only with its electric power, EV mode helps reduce noise⁶ and emissions.

ECON MODE
Press the ECON button, and Highlander Hybrid automatically modifies its throttle response to help make its operation even more economical. Press down hard on the accelerator, and the engine throttle response is modulated automatically to help reduce fuel consumption. And by reducing engine output, ECON mode also helps minimize wheel slippage and thus improves acceleration in low-traction conditions like ice- and snow-covered roads.

1. See footnote 49 in Disclaimers section. 2. See footnote 34 in Disclaimers section. 3. The Highlander Hybrid is not designed to be driven off-road. 4. See footnote 14 in Disclaimers section. 5. See footnote 46 in Disclaimers section. 6. See footnote 47 in Disclaimers section.



Hybrid Limited shown in Iced Amethyst Mica with accessory roof rail cross bars.

STARTING

From initial light or moderate acceleration to low speeds, Highlander Hybrid is powered solely by the high-torque electric motors.¹

NORMAL RUNNING

In normal driving conditions, Highlander Hybrid runs on the gasoline engine and is assisted by the electric motors as needed.

FULL ACCELERATION

During heavy acceleration, the gasoline engine is used while the battery supplies increased drive power to the electric motors.

DECELERATION/BRAKING

When slowing, the gasoline engine shuts off and the electric motors convert momentum into electricity, storing it in the battery.

STOPPING

When Highlander Hybrid comes to a stop, its gasoline engine shuts off to conserve fuel and reduce emissions.²

1. Gasoline engine utilized for acceleration on cold starts and full acceleration. 2. The preceding is based on a "likely scenario" for optimal driving conditions.

HIGHLANDER HYBRID

08 ACCESSORIES

The all-new Highlander comes with a long list of standard features and available options. But there's still more you can do to make your Highlander exactly the way you want it to be. With the accessories available from your authorized Toyota dealer, you're adding features and functionality designed to complement the quality of your 2008 Toyota Highlander.



Running boards



Cross bars and ski/snowboard attachment



All-weather cargo mats



Remote engine start



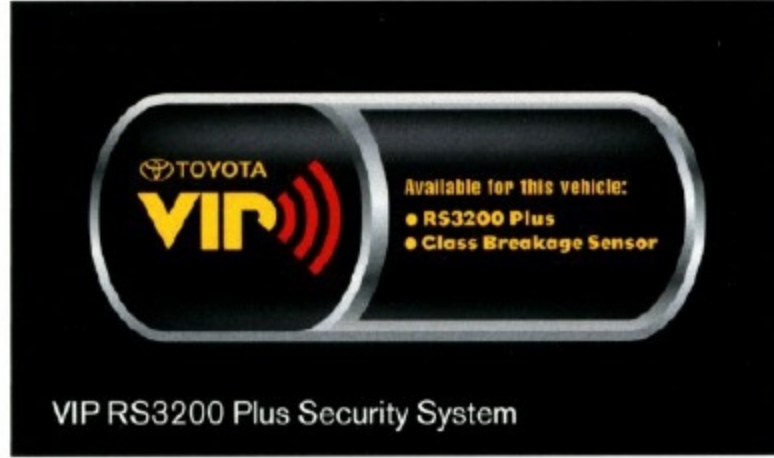
Mudguards



Carpeted floor mats



Cargo net



VIP RS3200 Plus Security System



Body side moldings



All-weather floor mats



Cargo tote



XM Satellite Radio¹

All-weather cargo mats
All-weather floor mats
Ashtray
Bike attachment
Body side molding
Cargo net
Cargo tote

Carpeted floor mats
Cross bars
Doorsill enhancements (available fall 2007)
Emergency assistance kit
Exhaust tip (standard on Sport)
First aid kit
Hood protector (available fall 2007)

Mudguards
Remote engine start
Running boards
Shift knob
Sirius Satellite Radio¹ (available fall 2007)
Ski/snowboard attachment
VIP Glass Breakage Sensor (GBS)²


VIP RS3200 Plus Security System
Wheel locks
Wireless headphones³
XM Satellite Radio¹

08 FEATURES¹

	HIGHLANDER	HIGHLANDER	HIGHLANDER	HIGHLANDER	HIGHLANDER		HIGHLANDER	HIGHLANDER	HIGHLANDER	HIGHLANDER	HIGHLANDER
	SPORT	SPORT	SPORT	SPORT	SPORT		SPORT	SPORT	SPORT	SPORT	SPORT
EXTERIOR											
Multi-reflector halogen headlamps with auto-off feature	S	–	–	S	–	Black-painted roof rails	O/P ⁴	–	–	–	–
Multi-reflector halogen headlamps with auto on/off feature ²	P	S	S	–	S	Dark silver-painted roof rails	–	S	–	–	–
Chrome headlamp bezels	S	–	S	–	–	Silver-painted roof rails	–	–	S	P ³	S
Smoked chrome bezels	–	S	–	–	–	Rear window with electric defogger and intermittent wiper	S	S	S	S	S
Blue-tinted headlamp and taillamp bezels	–	–	–	S	S	Rear glass hatch	–	S	S	P ⁵	S
Integrated fog lamps	–	S	S	–	S	Color-keyed rear spoiler with LED center high-mount stop lamp (CHMSL)	S	–	S	S	–
Color-keyed foldable power outside mirrors	S	S	S	S	S	Color-keyed sport-style rear spoiler with LED center high-mount stop lamp (CHMSL)	–	S	O	P ⁶	S
Puddle lamp exterior entry illumination	–	–	S	P ³	S	Power rear door with jam protection	–	O	O	P ⁶	S
Silver-painted grille	S	S	S	S	S	Full-time 4-wheel drive (4WD)	O ⁷	O ⁷	O ⁷	–	–
Smoked chrome grille surround and inserts	–	S	–	–	–	Electronic On-Demand 4-wheel drive with intelligence (4WD-i) ⁸	–	–	–	S	S
Chrome grille surround and inserts	–	–	S	–	–	Power tilt/slide moonroof with sunshade	–	O	O	–	O
Unique Hybrid grille with chrome surround	–	–	–	S	S	Fixed mast antenna	S	–	–	–	–
Chrome door handles	–	–	S	S	S	In-glass antenna with FM diversity reception	–	S	S	S	S
Chrome exhaust tip	–	S	–	–	–	Towing Prep Package⁹ – includes 5000-lb. towing capacity, heavy-duty radiator with engine oil cooler, 200-watt fan coupling, transmission oil cooler with water cooler, 150-amp alternator and prewired harness	O	O	O	–	–
UV reduction glass windshield	S	S	S	S	S	Hybrid Towing Prep Package⁹ – includes 3500-lb. towing capacity, heavy-duty radiator, 240-watt fan coupling, transmission oil cooler with water cooler and prewired harness	–	–	–	S	S
Privacy glass on rear side, quarter and tailgate windows	S	S	S	S	S	Cold Weather Package – includes heated power outside mirrors and windshield wiper de-icer grid	O	O	S	S	S
Washer-linked variable intermittent windshield wipers	S	S	S	S	S						
17-in. 6-spoke aluminum alloy wheels with machined-finish, P245/65R17 tires and full-size spare tire on alloy wheel	S	–	–	S	–						
19-in. 5-spoke aluminum alloy wheels with dark silver-painted accents, P245/55R19 tires and full-size spare tire on alloy wheel	–	S	–	–	–						
19-in. 5-spoke aluminum alloy wheels with silver-painted accents, P245/55R19 tires and full-size spare tire on alloy wheel	–	–	S	–	–						
19-in. 10-spoke aluminum alloy wheels with P245/55R19 tires and full-size spare tire on alloy wheel	–	–	–	P ³	S						
INTERIOR											
Front defroster-linked CFC-free air conditioning with air filter	S	S	–	S	S	Rear-seat DVD entertainment system with 9-inch display and two wireless headphones ¹⁷ (includes 115V power outlet and RCA jacks)	–	O ¹⁸	O ¹⁸	–	O ¹⁸
Front CFC-free dual zone automatic digital climate control system with air filter	–	O	S	O ⁶	O ⁶	Power windows with driver auto up/down with jam protection	S	S	S	S	S
CFC-free rear air conditioning system with air filter and rear vents for second- and third-row seats	O ¹⁰	O ¹⁰	–	O ^{6, 10}	O ¹⁰	Power door locks with auto shifter activation	S	S	S	S	S
CFC-free rear automatic digital climate control system with integrated multi-function display, air filter and rear vents for second- and third-row seats	–	O ¹¹	O	O ^{6, 11}	O ¹¹	Remote keyless entry system	S	S	S	S	S
AM/FM CD player with MP3/WMA playback capability and six speakers	S	–	–	S	–	Smart Key System ¹⁹ with Push Button Start and remote illuminated entry	–	–	S	S	S
AM/FM/6-disc in-dash CD changer with satellite radio capability, ¹² MP3/WMA playback capability and six speakers	O	S	S	P ³	S	Fabric-trimmed manual multi-adjustable ²⁰ front seats with 2-way adjustable headrests and seatback pockets	S	–	–	S	–
JBL [®] AM/FM 6-disc in-dash CD changer with satellite radio capability, ¹² MP3/WMA playback capability, hands-free phone capability via Bluetooth [®] ¹³ wireless technology and nine speakers including subwoofer in seven locations	–	O	O	–	O	Fabric-trimmed power multi-adjustable ²⁰ driver's seat, manual multi-adjustable front passenger seat with 4-way adjustable headrests and seatback pockets	–	S	–	P ³	S
Voice-activated DVD navigation system ¹⁴ with JBL [®] AM/FM 4-disc in-dash CD changer, satellite radio capability, ¹² MP3/WMA playback capability, hands-free phone capability via Bluetooth [®] ¹³ wireless technology and nine speakers including subwoofer in seven locations	–	O	O	–	O	Fabric-trimmed 40/20/40 second-row seat with armrest on outboard seats, fold-flat, recline, fore/aft slide adjustment, one-touch right-hand walk-in function, plus Center Stow [™] seat and Center Stow [™] console	S	S	–	S	S
Auxiliary audio jack	S	S	S	S	S	Fabric-trimmed third-row seat with fold-flat-into-floor capability and folding headrests	S ²¹	S ²¹	S	P ³	S
3.5-inch multi-function display – includes backup monitor, ^{15, 16} clock, outside temperature, cruise information (avg. fuel economy, avg. speed, distance to empty, current fuel economy, and trip timer), warning messages and air conditioning (when front auto a/c is installed)	–	S	S	S	S	Leather-trimmed power multi-adjustable ²⁰ driver's seat, manual multi-adjustable front passenger seat with multi-stage seat heaters, 4-way adjustable headrests and seatback pockets	–	O	–	–	–
						Leather-trimmed power multi-adjustable ²⁰ front passenger seats with 4-way adjustable headrests, seatback pockets and power driver's seat cushion extension	–	–	S	–	P ²²
						Leather-trimmed 40/20/40 second-row seat with armrest on outboard seats, fold-flat, recline, fore/aft slide adjustment, one-touch right-hand walk-in function, plus Center Stow [™] seat and Center Stow [™] console	–	O	S	–	P ²²

1. See footnote 12 in Disclaimers section. 2. Available for vehicles with factory security. 3. See footnote 17 in Disclaimers section.

08 FEATURES (continued)

INTERIOR (continued)	HIGHLANDER	HIGHLANDER SPORT	HIGHLANDER LIMITED	HIGHLANDER HYBRID	HIGHLANDER HYBRID LIMITED		HIGHLANDER	HIGHLANDER SPORT	HIGHLANDER LIMITED	HIGHLANDER HYBRID	HIGHLANDER HYBRID LIMITED
Leather-trimmed third-row seat with fold-flat-into-floor capability and folding headrests	–	O ²¹	S	–	P ²²	Optitron red-illuminated instrument cluster with speedometer, tachometer, water temperature and fuel gauge meters; LCD odometer with twin tripmeters; and seatbelt disconnect, airbag, door-ajar, battery oil pressure, brake, Vehicle Stability Control (VSC), ²⁸ Anti-lock Brake System (ABS), check engine, scheduled maintenance indicator, and low-fuel level warning lights	S	S	S	–	–
Driver and front passenger multi-stage heated seats	–	O ²³	O	–	P ²²						
Two-Row Seating Package – includes front- and second-row seating and cargo area under-floor storage compartment	O ^{24, 25}	O ²⁵	–	S ²⁵	–						
Silver-tone interior trim	S	S	–	–	–	Optitron blue-illuminated instrument meters with speedometer, Hybrid system indicator power meter, ready indicator, transmission shift indicator, engine coolant temperature and fuel gauge meters; LCD odometer with twin tripmeters; seatbelt disconnect, airbag, battery (12V) and high-voltage battery, master warning indicator, EV mode, ECON mode indicator, oil pressure, electronically controlled braking indicator, VSC; ²⁸ ABS, check engine, scheduled maintenance indicator, and low-fuel level warning lights	–	–	–	S	S
Satin mahogany wood-grain-style interior trim with silver finish and chrome door handle accents	–	–	S	–	–		S	S ²⁹	S ²⁹	S ²⁹	S ²⁹
Birch wood-grain-style interior trim with silver finish and chrome door handle accents	–	–	–	S	S		S	S	S	S	S
Tilt/telescopic adjustable steering wheel	S	S	S	S	S	Overhead console with map lights and conversation mirror	S	S	S	S	S
Urethane steering wheel and shift knob	S	–	–	–	–	Center console with six cup holders, storage compartments and second-row seat vents ³⁰	S	S	S	S	S
Leather-wrapped steering wheel with audio and multi-information display controls	–	S	–	S	S	Dual sun visors with vanity mirrors and sliding extensions	S	S	S	S	S
Leather-wrapped steering wheel with audio, climate control and multi-information display controls	–	O ¹¹	S	O ^{6, 11}	O ¹¹	Illuminated vanity mirrors	–	S	S	P	S
Leather-wrapped steering wheel with audio, Bluetooth, ^{*13} climate control and multi-information display controls	–	O ^{11, 26}	O ²⁶	–	O ^{11, 26}	Auto-dimming rearview mirror with compass ³¹	–	–	S	–	S
Leather-wrapped steering wheel with audio, Bluetooth, ^{*13} climate control, multi-information display and voice-activated navigation system ¹⁴ controls	–	O ^{11, 27}	O ²⁷	–	O ^{11, 27}	HomeLink ^{*32} universal transceiver	–	O	S	P ⁵	S
Urethane shift knob	S	–	–	–	–	Remote hood and fuel-filler door releases	S	S	S	S	S
Leather-wrapped shift knob with silver-tone inlay	–	S	–	–	–	Second-row personal reading lamps	–	S	S	P ³	S
Leather-wrapped shift knob with satin mahogany wood-grain-style inlay	–	–	S	–	–	Two front and one cargo area 12V auxiliary power outlets	S	S	S	S	S
Leather-wrapped shift knob with birch wood-grain-style inlay	–	–	–	S	S	Cargo area tonneau cover	O/P ⁴	S	S	O/P ⁵	S
Cruise control	S	S	S	S	S	Cargo area second-row-seat one-touch fold-flat levers	–	S	S	P ³	S
SAFETY AND CONVENIENCE						Energy-dissipating interior trim	S	S	S	S	S
 Star Safety System™ – includes Enhanced Vehicle Stability Control (VSC) ²⁸ with cutoff switch + Traction Control (TRAC), Anti-lock Brake System (ABS) with Electronic Brake-force Distribution (EBD) and Brake Assist ³³	S	S	S	–	–	Driver and front passenger seatbelt warning sensor	S	S	S	S	S
						3-point shoulder belts in all seating positions	S	S	S	S	S
						Adjustable shoulder belt anchors for front seating positions	S	S	S	S	S
Star Safety System™ with Vehicle Dynamics Integrated Management (VDIM) ³⁴ – includes Vehicle Stability Control (VSC) ²⁸ with cutoff switch + Traction Control (TRAC), Anti-lock Brake System (ABS) with Electronic Brake-force Distribution (EBD) and Brake Assist ³³	–	–	–	S	S	Emergency Locking Retractor (ELR) on driver's belt, Automatic/Emergency Locking Retractors (ALR/ELR) on all passenger belts	S	S	S	S	S
Driver and front passenger Advanced Airbag System ³⁵	S	S	S	S	S	Front seatbelt pretensioners with force limiters	S	S	S	S	S
Driver and front passenger front seat-mounted side airbags ³⁵	S	S	S	S	S	Second-row Child Restraint System (CRS) top tether anchors for seating positions and ISO-FIX Child Restraint System (CRS) anchors for outboard seating positions ⁴⁰	S	S	S	S	S
Three-row roll-sensing side curtain airbags (RSCA) ³⁵	S	S	S	S	S	Child-protector rear door locks	S	S	S	S	S
Driver's knee airbag ³⁵	S	S	S	S	S	Collapsible steering column	S	S	S	S	S
Active headrests ³⁶	S	S	S	S	S	Collision sensors to deactivate high-voltage battery	–	–	–	S	S
Direct Tire Pressure Monitor System (TPMS) ³⁷	S	S	S	S ³⁸	S ³⁸	Engine immobilizer	O	S	–	S	S
Hill Start Assist Control (HAC) ³⁹	S	S	S	S	S	Anti-theft and engine immobilizer systems	O	O	S	O	O
Downhill Assist Control (DAC) ³⁹ (4WD models)	S	S	S	–	–	Daytime Running Lights (DRL)	P	S	S	–	S
Front and rear energy-absorbing crumple zones	S	S	S	S	S						
Side-impact door beams	S	S	S	S	S						
						S = Standard O = Optional – = Not Available P = Feature is available as part of an option package.					

08 OPTIONS AND PACKAGES

HIGHLANDER

Cargo area tonneau cover	Two-Row Seating Package – includes front- and second-row seating and cargo area under-floor storage compartment ^{24, 25}
Black-painted roof rails	Light Control Package – includes Daytime Running Lights (DRL) and auto on/off function
AM/FM 6-disc in-dash CD changer with satellite radio capability, ¹² MP3/WMA playback capability and six speakers	Cold Weather Package – includes windshield wiper de-icer grid and heated sideview mirrors
Anti-theft alarm with engine immobilizer	Convenience Package – includes black-painted roof rails and cargo area tonneau cover
Engine immobilizer	Towing Prep Package ⁹ – includes 5000-lb. towing capacity, heavy-duty radiator with engine oil cooler, 200-watt fan coupling, transmission oil cooler with water cooler, 150-amp alternator and prewired harness
CFC-free rear air conditioning system with air filter ¹⁰	

HIGHLANDER SPORT

Power tilt/slide moonroof with sunshade	Anti-theft alarm with engine immobilizer
Leather seating surfaces (includes multi-stage heated front seats; available with two- and three-row seating configurations)	Front CFC-free dual zone automatic digital climate control system with air filter
JBL® AM/FM 6-disc in-dash CD changer with satellite radio capability, ¹² MP3/WMA playback capability, hands-free phone capability via Bluetooth ^{*13} wireless technology and nine speakers including subwoofer in seven locations	CFC-free rear air conditioning system with air filter ¹⁰
Voice-activated DVD navigation system ¹⁴ with JBL® AM/FM 4-disc in-dash CD changer, satellite radio capability, ¹² MP3/WMA playback capability, hands-free phone capability via Bluetooth ^{*13} wireless technology and nine speakers including subwoofer in seven locations	CFC-free rear automatic digital climate control system with integrated multi-function display and air filter ¹¹
Rear-seat DVD entertainment system with 9-inch display, rear-seat audio and two wireless headphones ¹⁷ (includes 115V power outlet and RCA jacks) ¹⁸	Two-Row Seating Package – includes front- and second-row seating and cargo area under-floor storage compartment ²⁵
HomeLink ^{*32} universal transceiver	Cold Weather Package – includes windshield wiper de-icer grid and heated sideview mirrors
Power rear door with jam protection	Towing Prep Package ⁹ – includes 5000-lb. towing capacity, heavy-duty radiator with engine oil cooler, 200-watt fan coupling, transmission oil cooler with water cooler, 150-amp alternator and prewired harness

HIGHLANDER LIMITED

Power tilt/slide moonroof with sunshade	Multi-stage heated front seats
JBL® AM/FM 6-disc in-dash CD changer with satellite radio capability, ¹² MP3/WMA playback capability, hands-free phone capability via Bluetooth ^{*13} wireless technology and nine speakers including subwoofer in seven locations	Power rear door with jam protection
Voice-activated DVD navigation system ¹⁴ with JBL® AM/FM 4-disc in-dash CD changer, satellite radio capability, ¹² MP3/WMA playback capability, hands-free phone capability via Bluetooth ^{*13} wireless technology and nine speakers including subwoofer in seven locations	CFC-free rear automatic digital climate control system with integrated multi-function display and air filter ¹¹
Rear-seat DVD entertainment system with 9-inch display, rear-seat audio and two wireless headphones ¹⁷ (includes 115V power outlet and RCA jacks) ¹⁸	Color-keyed sport-style rear spoiler with LED center high-mount stop lamp (CHMSL)
	Towing Prep Package ⁹ – includes 5000-lb. towing capacity, heavy-duty radiator with engine oil cooler, 200-watt fan coupling, transmission oil cooler with water cooler, 150-amp alternator and prewired harness

HIGHLANDER HYBRID

Cargo area tonneau cover	Popular Package – includes fabric-trimmed third-row seat with fold-flat-into-floor capability, folding headrests, illuminated vanity mirrors, second-row personal reading lamps, puddle lamp entry illumination, cargo area second-row-seat one-touch fold-flat levers, 19-in. 10-spoke aluminum alloy wheels with P245/55R19 tires and full-size spare tire on aluminum alloy wheel, silver-painted roof rails, power multi-adjustable driver's seat ²⁶ with power lumbar support and color-keyed sport-style rear spoiler with LED center high-mount stop lamp (CHMSL)
Anti-theft alarm with engine immobilizer	
Front CFC-free dual zone automatic digital climate control system with air filter ⁵	
CFC-free rear air conditioning system with air filter ¹⁰	
CFC-free rear automatic digital climate control system with integrated multi-function display and air filter ¹¹	

HIGHLANDER HYBRID LIMITED

Power tilt/slide moonroof with sunshade	Anti-theft alarm with engine immobilizer
JBL® AM/FM 6-disc in-dash CD changer with satellite radio capability, ¹² MP3/WMA playback capability, hands-free phone capability via Bluetooth ^{*13} wireless technology and nine speakers including subwoofer in seven locations	Front CFC-free dual zone automatic digital climate control system with air filter ¹¹
Voice-activated DVD navigation system ¹⁴ with JBL® AM/FM 4-disc in-dash CD changer, satellite radio capability, ¹² MP3/WMA playback capability, hands-free phone capability via Bluetooth ^{*13} wireless technology and nine speakers including subwoofer in seven locations	CFC-free rear air conditioning system with air filter
Rear-seat DVD entertainment system with 9-inch display, rear-seat audio and two wireless headphones ¹⁷ (includes 115V power outlet and RCA jacks) ¹⁸	CFC-free rear automatic digital climate control system with integrated multi-function display and air filter
	Luxury Package – includes leather seating surfaces, power multi-adjustable ²⁰ heated front seats with power lumbar support, power driver's seat cushion extension and HomeLink ^{*32} universal transceiver

08 GASOLINE SPECIFICATIONS

MECHANICAL/PERFORMANCE	HIGHLANDER	HIGHLANDER SPORT	HIGHLANDER LIMITED
Gasoline engine – 3.5-liter double overhead cam (DOHC) 24-valve dual independent VVT-i V6; 270 hp @ 6200 rpm, 248 lb.-ft. @ 4700 rpm	Standard	Standard	Standard
Emission rating – Ultra Low Emission Vehicle (ULEV)	Standard	Standard	Standard
Ignition system	Electronic, with Toyota Direct Ignition (TDI)		
Transmission – 5-speed electronically controlled automatic overdrive transmission with intelligence (ECT-i), sequential shift mode and Snow Mode	Standard	Standard	Standard
Body construction	Reinforced unitized body		
Drivetrain – Front engine front-wheel drive (2WD) or full-time 4-wheel drive (4WD)	Standard	Standard	Standard
Suspension	4-wheel independent MacPherson strut suspension with front and rear stabilizer bars (sport-tuned suspension on Sport models)		
Steering – Electric power steering (EPS) – rack-and-pinion with power-assist	Standard	Standard	Standard
Turning circle diameter, curb to curb (ft.)	38.7	38.7	38.7
Brakes			
Power-assisted ventilated front/solid rear disc brakes with Anti-lock Brake System (ABS) with Electronic Brake-force Distribution (EBD) and Brake Assist ³³	Standard	Standard	Standard
Coefficient of drag (Cd) (2WD/4WD)	0.34	0.34	0.34
EXTERIOR DIMENSIONS (in.)			
Overall length/width/unloaded height with roof rails/without roof rails	188.4/75.2/69.3/68.1	188.4/75.2/69.3/NA	188.4/75.2/69.3/NA
Wheelbase	109.8	109.8	109.8
Track (front/rear) – 2WD – 4WD	64.0/64.2 64.0/64.0	64.0/64.2 64.0/64.0	64.0/64.2 64.0/64.0
INTERIOR DIMENSIONS front/middle/rear (in.)			
Head room with moonroof	40.6/40.1/36.3	40.6/40.1/36.3 39.7/40.1/36.3	40.6/40.1/36.3 39.7/40.1/36.3
Shoulder room	59.7/59.5/55.0	59.7/59.5/55.0	59.7/59.5/55.0
Hip room	56.7/56.5/42.3	56.7/56.5/42.3	56.7/56.5/42.3
Leg room	43.2/38.3/29.9	43.2/38.3/29.9	43.2/38.3/29.9
Seating capacity (without third row)	7 (5) ²⁴	7 (5)	7
OFF-HIGHWAY			
Approach/departure angle (degrees)	29/24	29/24	29/24
Minimum running ground clearance (in.)	8.1	8.1	8.1
WEIGHTS AND CAPACITIES			
Curb weight (lb.) 2WD/4WD	3979/4178	4045/4255	4112/4321
Gross Vehicle Weight Rating – GVWR (lb.) 2WD 4WD	5800 6000	5800 6000	5800 6000
Towing capacity (lb.) ⁹ standard/maximum ⁴¹ 2WD 4WD	2000/5000 2000/5000	2000/5000 2000/5000	2000/5000 2000/5000
Passenger volume (cu. ft.) (without third row)	145.7 (113.5)	145.7 (113.5)	145.7 (NA)
Cargo volume (cu. ft.) ⁴² behind front/middle/rear seats	95.4/42.3/10.3	95.4/42.3/10.3	95.4/42.3/10.3
Fuel capacity (gal.)	19.2	19.2	19.2
TIRES			
Size Standard	P245/65R17	P245/55R19	P245/55R19
Type	All-Season steel-belted radial blackwalls	All-Season steel-belted radial blackwalls	All-Season steel-belted radial blackwalls
Spare	Full-size	Full-size	Full-size
EPA MILEAGE ESTIMATES (mpg city/highway) ⁴³			
2WD 4WD	18/24 17/23	18/24 17/23	18/24 17/23

08 HYBRID SPECIFICATIONS

MECHANICAL/PERFORMANCE	HIGHLANDER HYBRID	HIGHLANDER HYBRID LIMITED
Gasoline engine – 3.3-liter double overhead cam (DOHC), 24-valve VVT-i V6; 209 hp (156 kW) @ 5600 rpm, 212 lb.-ft. @ 3600 rpm	Standard	Standard
Emission rating – Super Ultra Low Emission Vehicle (SULEV) ⁴⁴ / Evaporative emission certification – Zero evaporation	Standard	Standard
ELECTRIC MOTOR		
Function – Drive front wheels, regeneration during braking	Standard	Standard
Motor type – Permanent magnet motor	Standard	Standard
Power output – 167 hp (123 kW) @ 4500 rpm	Standard	Standard
Maximum torque – 247 lb.-ft. @ 0-1500 rpm	Standard	Standard
Maximum voltage – AC 650V	Standard	Standard
REAR ELECTRIC MOTOR		
Function – Drive rear wheels, regeneration during braking	Standard	Standard
Motor type – Permanent magnet motor	Standard	Standard
Power output – 68 hp (50 kW) @ 4610-5120 rpm	Standard	Standard
Maximum torque – 96 lb.-ft. @ 0-610 rpm	Standard	Standard
Maximum voltage – AC 650V	Standard	Standard
TRACTION BATTERY		
Type – Sealed Nickel Metal Hydride (Ni-MH)	Standard	Standard
Maximum power output – 45 kW	Standard	Standard
Voltage – 288V	Standard	Standard
HYBRID SYSTEM NET POWER – 270 hp (201 kW)	Standard	Standard
PERFORMANCE ⁴⁵		
0-60 mph	8.1 seconds	8.1 seconds
Top track speed (electronically limited)	112 mph	112 mph
MECHANICAL		
Ignition system	Electronic, with Toyota Direct Ignition (TDI)	
Transmission – Electronically controlled continuously variable transmission (ECVT) w/ECON mode	Standard	Standard
EV mode ^{46, 47}	Standard	Standard
Body construction	Reinforced unitized body	
Drivetrain – Front engine Electronic On-Demand 4-wheel drive with intelligence (4WD-i) ⁸	Standard	Standard
Suspension	4-wheel independent MacPherson strut suspension with front and rear stabilizer bars	
Steering – Electric power steering (EPS) – rack-and-pinion with power-assist	Standard	Standard
Turning circle diameter, curb to curb (ft.)	39.0	39.0
Brakes – Electronically Controlled Braking System (ECB) with regenerative control and incorporating Anti-lock Brake System (ABS), Electronic Brake-force Distribution (EBD), Brake Assist ³³ and Vehicle Dynamics Integrated Management (VDIM) ³⁴	Standard	Standard
Coefficient of drag (Cd) (2WD/4WD)	0.34	0.34
EXTERIOR DIMENSIONS (in.)		
Overall length/width/unloaded height with roof rack/without roof rails	188.4/75.2/69.3/68.1	188.4/75.2/69.3/NA
Wheelbase	109.8	109.8
Track (front/rear)	64.0/64.0	64.0/64.0
INTERIOR DIMENSIONS front/middle/rear (in.)		
Head room with moonroof	40.6/39.8/36.3	40.6/39.8/36.3 39.7/39.8/36.3
Shoulder room	59.7/59.5/55.0	59.7/59.5/55.0
Hip room	56.7/56.3/42.3	56.7/56.3/42.3
Leg room	43.2/38.4/29.9	43.2/38.4/29.9
Seating capacity (with third row)	5 (7)	7
WEIGHTS AND CAPACITIES		
Curb weight (lb.)	4508	4641
Gross Vehicle Weight Rating – GVWR (lb.)	5935	6000
Towing capacity (lb.) ⁹ standard/maximum ⁴¹	3500 ⁴⁸	3500 ⁴⁶
Passenger volume (cu. ft.) (without third row)	145.4 (113.2)	145.4 (NA)
Cargo volume (cu. ft.) ⁴² behind front/middle/rear seats	94.1/42.4/10.3	94.1/42.4/10.3
Fuel capacity (gal.)	17.2	17.2
TIRES		
Size – Standard	P245/65R17	P245/55R19
Type	All-Season steel-belted radial blackwalls	All-Season steel-belted radial blackwalls
Spare	Full-size	Full-size
MILEAGE ESTIMATES (mpg city/highway/combined) ⁴⁹	27/25/26	27/25/26

08 COMBINATIONS

COLOR



Black with Ash, Black⁵⁰ or Sand Beige interior



Blue Streak Metallic⁵¹ with Ash, Black⁵⁰ or Sand Beige interior



Wave Line Pearl with Ash, Black⁵⁰ or Sand Beige interior



Cypress Pearl with Ash, Black⁵⁰ or Sand Beige interior



Iced Amethyst Mica⁵² with Ash interior



Salsa Red Pearl⁵¹ with Ash, Black⁵⁰ or Sand Beige interior



Sandy Beach Metallic⁵¹ with Black⁵⁰ or Sand Beige interior



Magnetic Gray Metallic⁵¹ with Ash or Black⁵⁰ interior



Classic Silver Metallic with Ash or Black⁵⁰ interior



Blizzard Pearl with Ash, Black⁵⁰ or Sand Beige interior

FABRIC/LEATHER



Highlander grade fabric in Ash



Highlander grade fabric in Sand Beige



Highlander premium fabric in Black⁵⁰



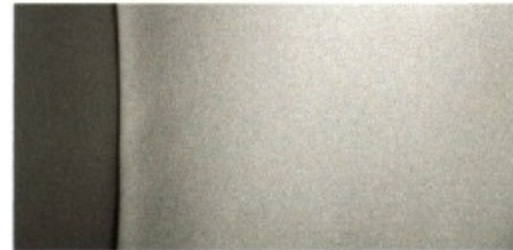
Highlander premium fabric⁵³ in Ash



Highlander premium fabric⁵³ in Sand Beige



Available leather trim in Black⁵⁰



Available leather trim⁵⁴ in Ash



Available leather trim⁵⁴ in Sand Beige

WHEEL



17-in. 6-spoke aluminum alloy wheel



19-in. 5-spoke aluminum alloy wheel with dark silver-painted accents



19-in. 5-spoke aluminum alloy wheel with silver-painted accents



19-in. 10-spoke aluminum alloy wheel

DISCLAIMERS

1. Toyota strives to build vehicles to match customer interest and thus they typically are built with popular options and option packages. Not all options/packages are available separately and some may not be available in all regions of the country. See toyota.com for information about options/packages commonly available in your area. If you would prefer a vehicle with no or different options, contact your dealer to check for current availability or the possibility of placing a special order. 2. Includes Daytime Running Lights (DRL). 3. Available with Popular Package. 4. Available with Convenience Package. 5. Available with Popular Plus Package. 6. Requires Popular Package or Popular Plus Package. 7. Standard on 4WD models, not available on 2WD models. 8. The Highlander Hybrid is not designed to be driven off-road. 9. Before towing, confirm your vehicle and trailer are compatible, hooked up and loaded properly and that you have any necessary additional equipment. Do not exceed any Weight Ratings and follow all instructions in your *Owner's Manual*. The maximum you can tow depends on the total weight of any cargo, occupants and available equipment. 10. Requires third-row seat and manual front air conditioning. 11. Requires front-seat dual zone automatic digital climate control. 12. Satellite radio requires XM[®] or Sirius-compatible receiver and monthly service fee. See your Toyota dealer for further details. Reception of the satellite signal may vary depending on location. All fees and programming subject to change. Subscriptions subject to the terms and conditions available at www.xmradio.com or www.sirius.com. Available only in the 48 contiguous United States. 13. The Bluetooth[®] technology phones listed on toyota.com have been tested for compatibility with Toyota vehicles. Performance will vary based on phone software version, coverage and your wireless carrier. Phones are warranted by their manufacturer, not Toyota. 14. The navigation system is designed to assist in locating an address or point of interest. Discrepancies may be encountered between the system and your actual location. Road system changes may affect the accuracy of the information provided. Rely on your common sense to decide whether to follow a specified route. Detailed coverage not available in every city or roadway. Periodic updates available at an additional cost. See your *Navigation System Owner's Manual* for further details. 15. The backup camera does not provide a comprehensive view of the rear area of the vehicle. You should also look around outside your vehicle and use your mirrors to confirm rearward clearance. Cold weather will limit effectiveness and view may become cloudy. 16. The backup camera uses the navigation system display on vehicles so equipped. 17. Headphones are for passenger use only. Do not use while operating vehicle. 18. Requires moonroof. 19. The Smart Key System may interfere with some pacemakers or cardiac defibrillators. If you have one of these medical devices, please talk to your doctor to see if you should deactivate this system. 20. 8-way driver's and 4-way passenger. 21. Not available on models equipped with Two-Row Seating Package. 22. Available with Luxury Package. 23. Included with leather seating surfaces. Not available with fabric seating. 24. 2WD models only. 25. Deletes third-row seat. 26. Requires JBL[®] audio. 27. Requires DVD navigation system. 28. Vehicle Stability Control (VSC) is an electronic system designed to help the driver maintain vehicle control under adverse conditions. It is not a substitute for safe driving practices. Factors including speed, road conditions and driver steering input can all affect whether VSC will be effective in preventing a loss of control. Please see your *Owner's Manual* for further details. 29. Clock displays on multi-function display on vehicles so equipped. 30. Console rear vents replaced with control panel on vehicles equipped with rear-seat HVAC systems. 31. Compass deleted from auto-dimming rearview mirror on Limited and Hybrid Limited models equipped with DVD navigation system. 32. HomeLink[®] is a registered trademark of Johnson Controls, Inc. 33. Brake Assist is designed to help the driver take full advantage of the benefits of ABS. It is not a substitute for safe driving practices. Braking effectiveness also depends on proper brake-system maintenance and tire and road conditions. 34. Vehicle Dynamics Integrated Management (VDIM) is an electronic system designed to help the driver maintain vehicle control under adverse conditions. It is not a substitute for safe driving practices. Factors including speed, road conditions and driver steering input can all affect whether VDIM will be effective in preventing a loss of control. Please see your *Owner's Manual* for further details. 35. All the airbag (AB) systems are Supplemental Restraint Systems. All ABs (if installed) are designed to inflate only under certain conditions and in certain types of severe collisions: frontal and knee ABs typically inflate in frontal collisions; side and side curtain ABs in side collisions; Roll-Sensing Curtain ABs at a severe tilt degree, roll or lateral G-force. In all other accidents, the ABs will not inflate. To decrease the risk of injury from an inflating AB, always wear seatbelts, sit upright in the middle of the seat as far back as possible and do not lean against the door. Do not put objects in front of an AB or around the seatback. Do not use a rearward-facing child seat in any front passenger seat. The force of an inflating AB may cause serious injury or death. See your *Owner's Manual* for further information/warnings. 36. Active headrests can help prevent or limit the extent of whiplash in certain types of rear-end collisions. 37. The Toyota Tire Pressure Monitor alerts the driver when tire pressure is critically low. For optimal tire wear and performance, tire pressure should be checked regularly with a gauge; do not rely solely on the monitor system. See your *Owner's Manual* for details. 38. Tire pressure data is shown on multi-function display on Hybrid models. 39. Downhill Assist Control (DAC) is designed to help the driver maintain vehicle control and speed on steep, downhill descents. Hill Start Assist Control (HAC) is designed to help minimize backward rolling on steep ascents. Neither system is a substitute for safe driving judgment and practices. Factors including speed, grade, surface conditions and driver input can all affect whether DAC and HAC will be effective in preventing a loss of control. Please see your *Owner's Manual* for further details. 40. Rear seat on two-row models, middle seat on three-row models. 41. Requires available Towing Prep Package. 42. Cargo and load capacity limited by weight and distribution. 43. 2008 EPA-estimated mileage. For model year 2008, the EPA has revised the way the estimated fuel economy rating is determined. Actual mileage may vary. 44. Meets Tier 2/Bin 3 Federal emissions standard. 45. Performance figures are for comparison only and were obtained with prototype vehicles by professional drivers using special safety equipment and procedures. Do not attempt. 46. EV mode can only be engaged in certain conditions. Please see your Toyota vehicle *Owner's Manual* for further details. 47. CAUTION! When driving a hybrid vehicle, pay special attention to the area around the vehicle. Because there is little vehicle noise in electric-only mode, pedestrians, people riding bicycles or other people and vehicles in the area may not be aware of the vehicle starting off or approaching them, so take extra care while driving. 48. For Hybrid models, 3500-lb. maximum standard towing capacity. Please see your Toyota vehicle *Owner's Manual* for further details. 49. 2008 Highlander Hybrid preliminary mileage estimates determined by Toyota. EPA mileage estimates not available at time of printing. Actual mileage may vary. 50. Available on Sport model only. 51. Not available on Hybrid models. 52. Not available on Highlander grade, Sport or Limited. 53. Standard on Sport and Hybrid models. 54. Not available on Highlander grade or Highlander Hybrid. Available on Sport and Hybrid Limited. Standard on Limited.

TOYOTA FINANCIAL SERVICES^{*}

Now that you're thinking about a Toyota, you may also want to consider leasing or financing the purchase of your new vehicle through your participating dealer and Toyota Financial Services (TFS). TFS offers a variety of high-quality finance and lease products to complement your lifestyle. At TFS we realize that purchasing or leasing a vehicle is a major commitment and we have developed some of the finest customer-focused finance and insurance solutions to help protect your interests over time. And in most cases, you may include your cost for these products in your finance

or lease contract. Few companies can match the expertise, customer care and total value of TFS. Ask your Toyota dealer or go to www.toyotafinancial.com for details.

^{*}Toyota Financial Services is a service mark of Toyota Motor Credit Corporation and Toyota Motor Insurance Services, Inc. Products are available to qualified customers through your participating Toyota dealer and Toyota Financial Services.

WARRANTIES

Every Toyota Car, Truck and SUV is built to exceptional standards. And that's not idle boasting. We back it up with these Limited Warranty Coverages:

Basic: 36 months/36,000 miles (all components other than normal wear and maintenance items).

Hybrid-Related Component Coverage: Hybrid-related components, including the HV battery, battery control module, hybrid control module and inverter with converter, are covered for 8 years/100,000 miles. The HV battery may have longer coverage under emissions warranty. Refer to applicable *Owner's Warranty Information* booklet for details.

Powertrain: 60 months/60,000 miles (engine, transmission/transaxle, front-wheel drive, rear-wheel drive, seatbelts and airbags).

Rust-Through: 60 months/unlimited miles (corrosion perforation of sheet metal).

Emissions: Coverages vary under Federal and California regulations. Refer to applicable *Owner's Warranty Information* booklet for details.

Accessories: For accessories purchased at the time of the new vehicle purchase, the Toyota Accessory Warranty coverage is in effect for 36 months/36,000 miles from the vehicle's in-service date, which is the same coverage as the Toyota New Vehicle Limited Warranty.

For accessories purchased after the new vehicle purchase the coverage is 12 months, regardless of mileage, from the date the accessory was installed on the vehicle, or the remainder of any applicable new vehicle warranty, whichever provides greater coverage, with the exception of car covers. Car covers are warranted for 12 months from the date of purchase and do not assume any coverage under the Toyota New Vehicle Limited Warranty.

You may be eligible for transportation assistance if it's necessary that your vehicle be kept overnight for repairs covered under warranty. Please see your authorized Toyota dealership for further details.

For complete details about Toyota's warranties, please visit www.toyota.com, refer to the applicable *Owner's Warranty Information* booklet or see your Toyota dealer.

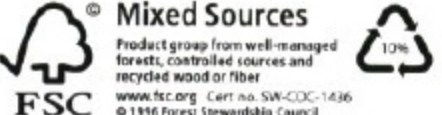
Note: The Highlander Hybrid is not designed to be driven off-road.

The Toyota Highlander is designed to meet most off-road driving requirements. Abusive use may result in bodily harm or damage. Toyota encourages responsible operation to protect you, your vehicle and the environment. Seatbelts should be worn at all times. Please do not allow passengers to ride in the cargo area. Towing hitch receivers/ball mount kits are not intended to provide crash protection.

For details on vehicle specifications, standard features and available equipment in your area, contact your Toyota dealer. A vehicle with particular equipment may not be available at the dealership. Ask your Toyota dealer to help locate a specifically equipped vehicle. All information presented herein is based on data available at the time of posting, is subject to change without notice and pertains specifically to mainland U.S.A. vehicles only.

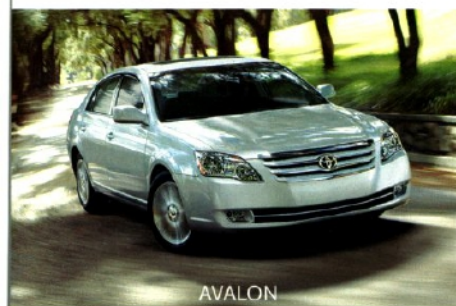


For Toyota Mobility program details, go to www.toyota.com/mobility or call the Toyota Customer Assistance Center at 1-800-331-4331

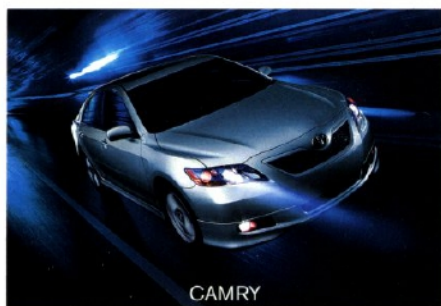




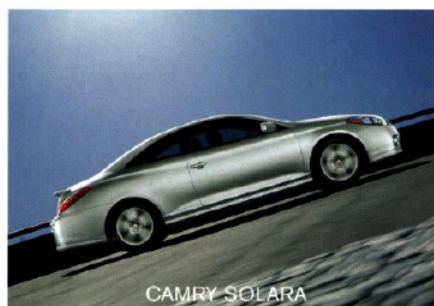
Our eyes are always on the road ahead. Striving to find ways to help you be safe. Go farther on a tank of gas. To help the earth go further on its limited resources. Moving Forward is embedded in our DNA. It's shared by our dealers, and ultimately, inspired by our customers. toyota.com 1-800-GO-TOYOTA



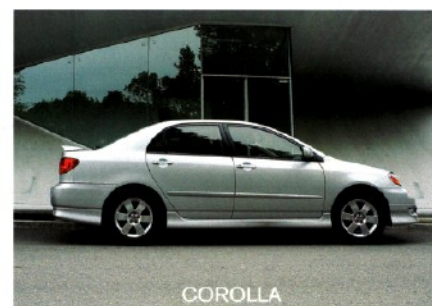
AVALON



CAMRY



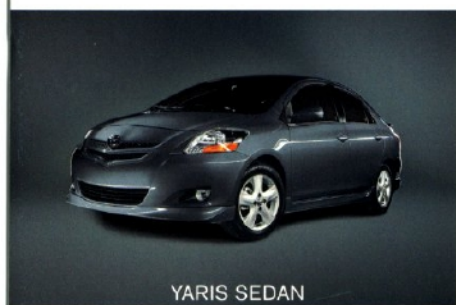
CAMRY SOLARA



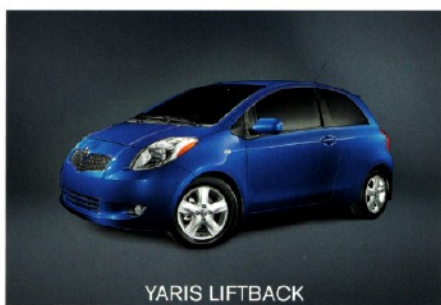
COROLLA



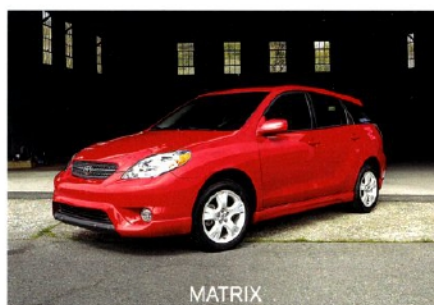
PRIUS



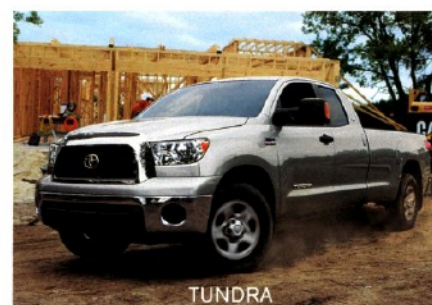
YARIS SEDAN



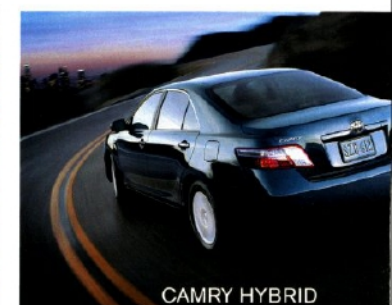
YARIS LIFTBACK



MATRIX



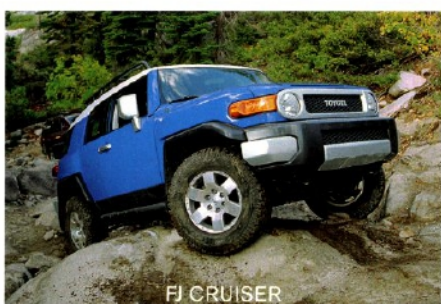
TUNDRA



CAMRY HYBRID



TACOMA



FJ CRUISER



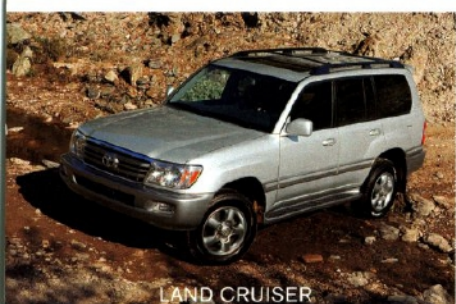
4RUNNER



RAV4



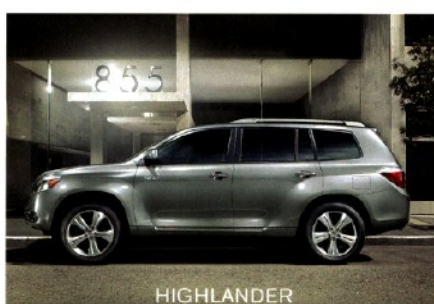
HIGHLANDER HYBRID



LAND CRUISER



SEQUOIA



HIGHLANDER



SIENNA



Hybrid Synergy Drive[®] powering the Prius, Camry Hybrid and Highlander Hybrid, combines a clean-burning gas engine with an efficient electric motor to deliver excellent fuel economy, low emissions and performance.