



2010 4RUNNER





# THE FIFTH GENERATION 4RUNNER. YOU IN?

4Runner has always been the kind of SUV that makes things happen.

Adventurous things planned on the fly, sparked by the promise of going bigger, steeper, farther: a weather report predicting six inches of fresh powder in the mountains, a fishing report that the largemouth are biting on a remote lake, or a surf report calling for six-foot sets rolling toward a secluded cove. You get the idea. The question is, will you get *with* the idea? Are you in? With the new fifth generation 4Runner, there's no question. Beneath its rugged good looks, there's durable body-on-frame construction and advanced traction technologies for true off-road capability. Its new, more powerful, available V6 engine is also less thirsty. Step inside and make yourself comfortable. It's easy, thanks to all the room we added. Now open up the rear cargo area. The available sliding rear cargo deck that holds up to 440 lbs.<sup>1</sup> tells you all you need to know: 4Runner is ready when you are. The 2010 Toyota 4Runner.

**Moving Forward.**



1. See footnote 32 in Specifications section. 2. See footnote 13 in Specifications section.

V6 SR5 4x4 shown in Magnetic Gray Metallic with available Convenience Package, backup camera<sup>2</sup> and roof rail cross bars.



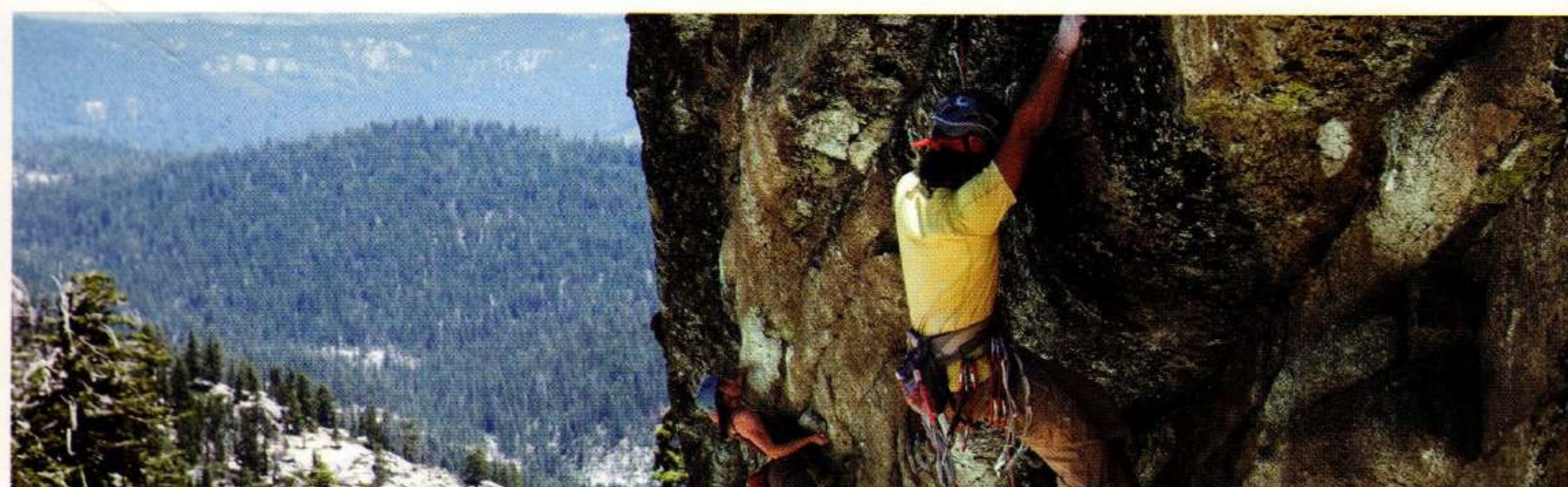
## 4RUNNER TRAIL

If specifications such as approach and departure angles, wheel articulation and ground clearance are just as important to you as the size of the cup holders, you've come to the right SUV. 4Runner Trail was designed to deliver hard-core off-road capabilities — starting with a ground clearance of 9.6 inches.

For specific off-road conditions, there are two driver-selectable features. To enhance off-road performance and traction, Multi-terrain Select lets you choose from four terrain modes: "Mud and Sand," "Loose Rock," "Mogul," or "Rock." Need to traverse off-road obstacles using extremely low-speed, controlled maneuvers? Engage Crawl Control! It modulates the electronic throttle and brakes, so the driver can focus more attention on steering.



Trail shown in Classic Silver Metallic.



# TACTICAL MANEUVERS

The new 4Runner Trail is available with advanced technology called the Kinetic Dynamic Suspension System (KDSS). Off-road, KDSS helps increase the articulation of the suspension using enhanced control. And it's no slacker on-road. KDSS helps decrease body roll when cornering. Massive frame rails, a 4-link rear axle with

lateral rod, ventilated front brake rotors with dual-piston front calipers and an integrated tow hitch that's standard on all 4Runner models help give it the strength to make light work out of heavy towing. In fact, 4Runner has an available towing capability of up to 5000 lbs.<sup>2,3</sup>

1. See footnote 2 in Specifications section. 2. See footnote 7 in Specifications section. 3. V6 models only and calculated with new SAE J2807 method.



Trail shown in Classic Silver Metallic.





**CLASS-FIVE  
RAPIDS.  
A 12-FOOT  
DROP. GIANT  
MOSQUITOS.  
YOU IN?**

One glance at the new 4Runner Limited and its lineage to a tradition of tough, rugged engineering is obvious. From its standard 20-inch split 6-spoke alloy wheels on up, the redesign gives it a look that's lean and mean. Those same qualities can be found under the hood, where the new V6 engine gains 34 horsepower and 12 lb.-ft. of torque versus the V6 it replaced. Using dual independent Variable Valve Timing with intelligence (VVT-i), it simultaneously optimizes both power and fuel efficiency. So you can have muscle without the fat.



Limited 4x4 shown in Shoreline Blue Pearl<sup>1</sup> with available accessory roof rail cross bars.

1. See footnote 3 in Packages and Options section.



# LIKE YOU'RE GLAMPING.

That's right, "glamping" – short for glamour camping. You're still in the rugged outdoors, but inside the tent you've got the best gear in the campground. The new 4Runner Limited is a lot like that. Just inches beneath your feet it's handling the rough stuff. Yet from where you sit, all is high-end and high-tech. In fact, you literally sit higher. There's more room, too: Head room and hip room are increased, and the distance between the front seats is wider to give everybody more elbow room. 4Runner's second-row seat folds 40/20/40 to give you lots of ways to combine cargo<sup>2</sup> and passengers. It even reclines to give passengers seated in the second row first-class treatment.

## VOICE-ACTIVATED TOUCH-SCREEN DVD NAVIGATION SYSTEM<sup>1,3</sup>

Take the guesswork out of venturing into the unknown. 4Runner's available voice-activated touch-screen DVD navigation system lets you map your whereabouts with the touch of a finger.

## DUAL ZONE AUTOMATIC DIGITAL CLIMATE CONTROL

There are two sides to every story. Which is why 4Runner Limited comes with a dual zone automatic digital climate control. The driver can set one temperature setting, while the front passenger can select a separate setting. Rear ventilation and an air filtration system add to 4Runner's high level of interior comfort.

1. See footnote 12 in Specifications section. 2. See footnote 32 in Specifications section.  
3. Available on Trail and Limited models only.



# WELL- PACKED

The redesigned 4Runner is the campsite everyone will want to gather round. And for good reason: It's got an available sliding rear cargo deck that holds up to 440 lbs.<sup>1</sup> of gear. Our engineers paid even more attention to the cargo area, adding a Party Mode equalizer switch that optimizes tailgate listening, rear gate lighting and an available 120V AC power outlet.<sup>2</sup> And for quick access to the cargo area, there's a power sliding rear window. So whether you choose the SR5, Trail or Limited, you're well-equipped for what comes your way.



Ⓐ

## 4RUNNER LIMITED

Want the best of everything? Consider what comes standard on 4Runner Limited. There's a leather-trimmed interior including an 8-way power-adjustable driver's seat with lumbar support and 4-way power-adjustable passenger seat. And both front seats are heated.



Limited 4x4 shown in Sand Beige leather with available voice-activated touch-screen DVD navigation system<sup>3</sup> and 50/50 split fold-flat-into-floor third-row seating.<sup>4</sup>



Photo not intended to replicate actual inflated airbags.



## Ⓐ ENHANCED REAR TAILGATE

4Runner's spacious rear cargo area is available with a sliding rear cargo deck that can hold up to 440 lbs.<sup>1</sup> An enhanced music mode brings rear gate lighting and speakers to the party.

## Ⓑ SAFETY CONNECT™<sup>5,6</sup>

Via Toyota's dedicated 24/7 call center, Safety Connect™ offers subscribers such helpful features as Automatic Collision Notification, Stolen Vehicle Location, Emergency Assistance Button (SOS) and Roadside Assistance. Safety Connect offers the reliability of embedded cellular and GPS technology.

## Ⓒ SMART KEY SYSTEM<sup>6,7</sup>

With 4Runner Limited you can unlock doors, open or close the power sliding rear window and even start the vehicle at the push of a button, even though your key is still in your pocket or purse.

## Ⓓ 40/20/40 SECOND ROW

4Runner's versatility is evident in its second-row seat. Recline it and relax. Or fold its 40/20/40 seat sections to create a variety of passenger and cargo-carrying configurations.



Ⓓ

# WELL- PREPARED



The new 4Runner comes standard with eight airbags<sup>8</sup>. Also standard is the Star Safety System™, an integration of safety features that help assist drivers to avoid accidents in the first place. Vehicle Stability Control (VSC)<sup>9</sup> helps prevent sideways slipping due to severe skidding while cornering. Traction Control (TRAC)<sup>10</sup> employs throttle control to help reduce wheelspin and transfer torque to the wheel with the most traction. If the 4-wheel Anti-lock Brake System (ABS) senses an impending wheel lockup, it pulses the brakes rapidly, so wheels rotate rather than skid, giving the driver more control. Electronic Brake-force Distribution (EBD) optimizes the braking effort distributed between front and rear axles, while Brake Assist<sup>11</sup> applies additional brake pressure if it detects a panic stop.

1. See footnote 32 in Specifications section. 2. Standard on Trail and Limited, available on SR5 V6. 3. See footnote 12 in Specifications section. 4. See footnote 17 in Specifications section. 5. See footnote 25 in Specifications section. 6. Limited models only. 7. See footnote 19 in Specifications section. 8. See footnote 26 in Specifications section. 9. See footnote 22 in Specifications section. 10. See footnote 23 in Specifications section. 11. See footnote 24 in Specifications section.

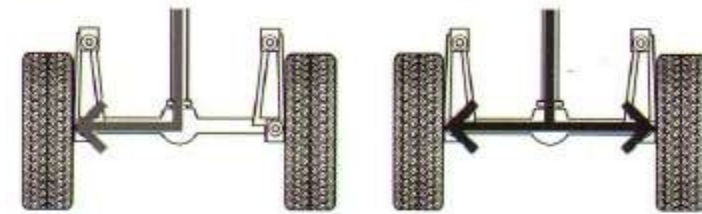


# TOOLS FOR THE TERRAIN

The new 4Runner offers a full slate of technologies to help drivers get traction under control. Hill Start Assist Control (HAC)<sup>1,2</sup> helps increase control on steep upgrades and stopping and starting on slippery surfaces. Downhill Assist Control (DAC)<sup>1,3</sup> applies the brakes to individual wheels to help control vehicle speed during descent on steep or slippery surfaces. Active Traction Control (A-TRAC)<sup>3</sup> helps control brake pressure to the slipping wheels and transfer torque to the wheels with traction to help move your 4Runner forward.

## ELECTRONIC LOCKING REAR DIFFERENTIAL

The Trail's electronic locking rear differential does its best work when you're axle-deep in mud or on a moss-slicked boat ramp. Lock the rear diff, and power is distributed evenly to both rear wheels, keeping them moving at the same speed, even when one wheel is off the ground. Or, if you're crawling over boulders, the locking rear differential's precise and predictable power output helps you move at a very controlled pace over precarious obstacles. Now, that's capability.



## X-REAS SPORT ENHANCEMENT SUSPENSION

Designed to improve on-road handling performance and ride comfort, 4Runner Limited's X-REAS technology links each of the vehicle's shocks to their diagonal counterpart via a gas/hydraulic chamber – front-left to rear-right, and front-right to rear-left. During cornering or traveling on a bumpy surface, the gas/hydraulic chamber moves fluid from the cross-linked shock bearing the least amount of force to the shock bearing the greatest amount of force. This helps 4Runner's wheels maintain contact with the driving surface and helps lessen vehicle body sway and pitch.

## HILL START ASSIST CONTROL (HAC)<sup>1,2</sup>

You're stopped during your climb up a trail. What can happen next is why 4Runner V6 models come equipped with a feature called Hill Start Assist Control, or HAC. Without it, a vehicle can roll backward as the driver switches from the brake to the accelerator. HAC detects when the wheels roll backward, and then gently applies the brakes, helping give the driver time to engage the accelerator.

## DOWNHILL ASSIST CONTROL (DAC)<sup>1,3</sup>

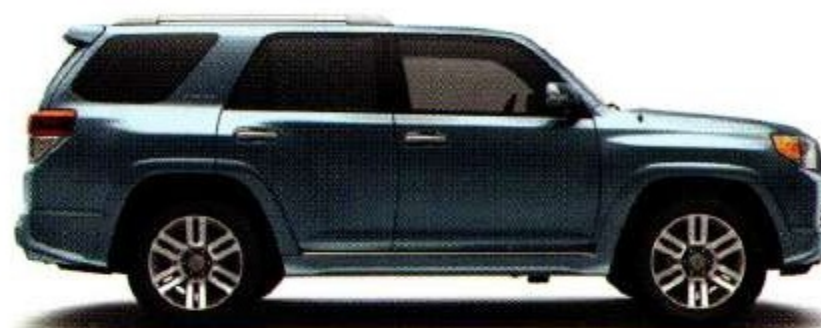
4WD 4Runner SR5 and Limited models come with an innovative feature called Downhill Assist Control, or DAC. Designed to help provide a controlled descent on steep inclines, it works by setting a target vehicle speed of approximately 2-4 mph. To help maintain that target speed, DAC sends a signal that automatically modulates 4Runner's powerful brakes.



## COLOR



**BLACK**  
Black<sup>1</sup> Graphite or Sand Beige interior



**SHORELINE BLUE PEARL<sup>2,3</sup>**  
Black<sup>1</sup> or Sand Beige interior



**SALSA RED PEARL<sup>3,4</sup>**  
Black<sup>1</sup> Graphite or Sand Beige interior



**MAGNETIC GRAY METALLIC<sup>5</sup>**  
Black<sup>1</sup> or Graphite interior



**CLASSIC SILVER METALLIC**  
Black<sup>1</sup> or Graphite interior



**BLIZZARD PEARL<sup>1,6</sup>**  
Black<sup>1</sup> Graphite or Sand Beige interior

## FABRIC/LEATHER



Fabric available in Graphite



Fabric available in Sand Beige



Sport fabric available in Graphite



Sport fabric available in Sand Beige



Water-resistant fabric<sup>7</sup> in Graphite



Leather available in Black<sup>1</sup>



Leather available in Sand Beige<sup>1</sup>

## SR5

**Convenience Package<sup>5</sup>** – Power tilt/slide moonroof with sunshade and front and rear 120V AC power outlets

**Premium Package<sup>5,8</sup>** – Leather-trimmed and heated 8-way power-adjustable driver's seat with power lumbar support and 4-way power-adjustable passenger seat, leather-trimmed second row (leather-trimmed third row on vehicles so equipped), leather-wrapped steering wheel and shift knob, and courtesy lamps

Sliding rear cargo deck with under-floor storage box

Sport fabric-trimmed 8-way power-adjustable driver's seat with power lumbar support and 4-way power-adjustable passenger seat

Power tilt/slide moonroof with sunshade<sup>5</sup>

Backup camera<sup>9</sup> linked to an electrochromic mirror with integrated backup camera monitor<sup>5</sup>

Front and rear 120V AC power outlets<sup>5</sup>

AM/FM/MP3 CD player with eight speakers, integrated XM Satellite Radio<sup>10</sup> with 90-day trial subscription, USB<sup>11</sup> port with iPod<sup>®12</sup> connectivity, and hands-free phone capability and music streaming via Bluetooth<sup>®13</sup> wireless technology (V6 models only)

Anti-theft alarm system with engine immobilizer<sup>5,14</sup>

50/50 split fold-flat-into-floor third-row seating and sliding second row with passenger-side one-touch walk-in function<sup>5</sup>

## TRAIL

Voice-activated touch-screen DVD navigation system<sup>15</sup> with JBL<sup>®</sup> AM/FM/MP3 4-disc CD changer and 15 speakers including subwoofer, integrated XM Satellite Radio<sup>10</sup> and XM NavTraffic<sup>®15</sup> with 90-day trial subscriptions, USB<sup>11</sup> port with iPod<sup>®12</sup> connectivity, hands-free phone capability and music streaming via Bluetooth<sup>®13</sup> wireless technology, and integrated backup camera<sup>9</sup>

Kinetic Dynamic Suspension System (KDSS)

## LIMITED

Voice-activated touch-screen DVD navigation system<sup>15</sup> with JBL<sup>®</sup> AM/FM/MP3 4-disc CD changer and 15 speakers including subwoofer, integrated XM Satellite Radio<sup>10</sup> and XM NavTraffic<sup>®15</sup> with 90-day trial subscriptions, USB<sup>11</sup> port with iPod<sup>®12</sup> connectivity, hands-free phone capability and music streaming via Bluetooth<sup>®13</sup> wireless technology, and integrated backup camera<sup>9</sup>

50/50 split fold-flat-into-floor third-row seating<sup>16</sup> and sliding second row with passenger-side one-touch walk-in function

## WARRANTIES

Every Toyota Car, Truck and SUV is built to exceptional standards. And that's not idle boasting. We back it up with these Limited Warranty Coverages:

**Basic:** 36 months/36,000 miles (all components other than normal wear and maintenance items).

**Powertrain:** 60 months/60,000 miles (engine, transmission/transaxle, front-wheel drive, rear-wheel drive, seatbelts and airbags).

**Rust-Through:** 60 months/unlimited miles (corrosion perforation of sheet metal).

**Emissions:** Coverages vary under Federal and California regulations. Refer to applicable *Warranty and Maintenance Guide* for details.

**Accessories:** For Genuine Toyota accessories purchased at the time of the new vehicle purchase, the Toyota Accessory Warranty coverage is in effect for 36 months/36,000 miles from the vehicle's in-service date, which is the same coverage as the Toyota New Vehicle Limited Warranty.

For Genuine Toyota accessories purchased after the new vehicle purchase the coverage is 12 months, regardless of mileage, from the date the accessory was installed on the vehicle, or the remainder of any applicable new vehicle warranty, whichever provides greater coverage, with the exception of car covers. Car covers are warranted for 12 months from the date of purchase and do not assume any coverage under the Toyota New Vehicle Limited Warranty.

You may be eligible for transportation assistance if it's necessary that your vehicle be kept overnight for repairs covered under warranty. Please see your authorized Toyota dealership for further details.

For complete details about Toyota's warranties, please visit [www.toyota.com](http://www.toyota.com), refer to the applicable *Warranty and Maintenance Guide* or see your Toyota dealer.


<sup>1.</sup> SR5 V6 and Limited models only. <sup>2.</sup> Limited and Trail models only. <sup>3.</sup> Salsa Red Pearl and Shoreline Blue Pearl expected availability late 2009. <sup>4.</sup> SR5 V6 and Trail models only. <sup>5.</sup> Not available on SR5 4-cylinder. <sup>6.</sup> Extra-cost color. <sup>7.</sup> Available on Trail model only. <sup>8.</sup> Requires AM/FM/MP3 CD player with eight speakers, integrated satellite radio capability with 90-day trial subscription to XM Satellite Radio, USB port with iPod<sup>®</sup> connectivity, and hands-free phone capability and music streaming via Bluetooth<sup>®</sup> wireless technology. <sup>9.</sup> See footnote 13 in Specifications section. <sup>10.</sup> See footnote 8 in Specifications section. <sup>11.</sup> May not be compatible with all MP3/WMA players and like models. <sup>12.</sup> iPod<sup>®</sup> is a registered trademark of Apple, Inc. All rights reserved. <sup>13.</sup> See footnote 11 in Specifications section. <sup>14.</sup> See footnote 29 in Specifications section. <sup>15.</sup> See footnote 12 in Specifications section. <sup>16.</sup> See footnote 17 in Specifications section.

<sup>1.</sup> See footnote 3 in Specifications section. <sup>2.</sup> V6 models only. <sup>3.</sup> 4WD models only.



EXTERIOR	SR5	TRAIL	LIMITED
Multi-reflector halogen headlamps with auto-off feature	S	S	-
Multi-reflector halogen headlamps with auto on/off feature	-	-	S
Integrated front fog lamps and multi-reflector taillamps	S	S	S
Automatic Limited-Slip Differential (Auto LSD) (2WD models)	S	-	S
Part-time 4WD with Active Traction Control (A-TRAC)	O	S	-
Full-time 4WD with Active Traction Control (A-TRAC) and Locking Center Differential	-	-	O
Locking rear differential, Multi-terrain Select, and Crawl Control <sup>2</sup>	-	S	-
Hill Start Assist Control (HAC) <sup>3</sup> (V6 models)	S	S	S
Downhill Assist Control (DAC) <sup>3</sup> (V6 4WD models)	S	S	S
Kinetic Dynamic Suspension System (KDSS)	-	O <sup>4</sup>	-
X-REAS Sport Enhancement Suspension	-	-	S
Front and rear underbody skid plates (transfer case skid plate on V6 4WD models)	S	S	S
17-in. 6-spoke alloy wheels with P265/70R17 tires	S	-	-
17-in. alloy wheels with P265/70R17 tires	-	S	-
20-in. split 6-spoke alloy wheels with P245/60R20 tires	-	-	S

INTERIOR	SR5	TRAIL	LIMITED
CFC-free climate control with rear ventilation and air filter	S	S	-
CFC-free dual zone automatic digital climate control with rear ventilation and air filter	-	-	S
AM/FM/MP3 CD player with eight speakers and satellite radio capability <sup>8</sup> (requires XM receiver and XM subscription)	S	-	-
AM/FM/MP3 CD player with eight speakers, integrated XM Satellite Radio <sup>9</sup> with 90-day trial subscription, USB <sup>9</sup> port with iPod <sup>®10</sup> connectivity, and hands-free phone capability and music streaming via Bluetooth <sup>®11</sup> wireless technology	O	S	-
JBL <sup>®</sup> AM/FM/MP3 6-disc CD changer with 15 speakers including subwoofer, integrated XM Satellite Radio <sup>9</sup> with 90-day trial subscription, USB <sup>9</sup> port with iPod <sup>®10</sup> connectivity, and hands-free phone capability and music streaming via Bluetooth <sup>®11</sup> wireless technology	-	-	S
Voice-activated touch-screen DVD navigation system <sup>12</sup> with JBL <sup>®</sup> AM/FM/MP3 4-disc CD changer and 15 speakers including subwoofer, integrated XM Satellite Radio <sup>9</sup> and XM NavTraffic <sup>®12</sup> with 90-day trial subscriptions, USB <sup>9</sup> port with iPod <sup>®10</sup> connectivity, hands-free phone capability and music streaming via Bluetooth <sup>®11</sup> wireless technology, and integrated backup camera <sup>13</sup>	-	O <sup>14</sup>	O
Auxiliary audio jack	S	S	S
Fabric-trimmed 6-way adjustable driver's seat with power lumbar support	S	-	-
Sport fabric-trimmed 8-way power-adjustable driver's seat with power lumbar support and 4-way power-adjustable passenger seat	O <sup>15</sup>	-	-
Water-resistant fabric-trimmed seating materials with 8-way power-adjustable driver's seat with power lumbar support and 4-way power-adjustable passenger seat	-	S	-
Leather-trimmed and heated 8-way power-adjustable driver's seat with power lumbar support and 4-way power-adjustable passenger seat, leather-trimmed second row (leather-trimmed third row on vehicles so equipped), and leather-wrapped steering wheel	O <sup>6, 16</sup>	-	S
40/20/40 split reclining and fold-flat second-row seating	S	S	S
50/50 split fold-flat-into-floor third-row seating and sliding second row with passenger-side one-touch walk-in function	O <sup>5</sup>	-	O <sup>17</sup>
Second-row-seat center armrest with cup holders	S	S	S
Sliding rear cargo deck with under-floor storage box	O <sup>18</sup>	S	S <sup>17</sup>

SAFETY AND CONVENIENCE	SR5	TRAIL	LIMITED
 Star Safety System <sup>TM</sup> – includes Vehicle Stability Control (VSC) <sup>22</sup> + Traction Control (TRAC) <sup>23</sup> Anti-lock Brake System (ABS) with Electronic Brake-force Distribution (EBD) and Brake Assist <sup>24</sup>	S	S	S
Safety Connect <sup>TM25</sup> – features Automatic Collision Notification, Stolen Vehicle Location, Emergency Assistance Button (SOS) and Roadside Assistance services. Available by subscription. Complimentary 1-year trial subscription.	-	-	S
Driver front airbag and front passenger airbag with Advanced Airbag System <sup>26</sup>	S	S	S
Driver and front passenger TAP (thorax, abdomen, pelvis) front seat-mounted side airbags and front- and second-row (third-row airbags on models so equipped) roll-sensing side curtain airbags (RSCA) <sup>26</sup> with cutoff switch	S	S	S
Driver and front passenger knee airbags <sup>26</sup>	S	S	S
Driver and front passenger active headrests <sup>27</sup>	S	S	S
Direct Tire Pressure Monitor System (TPMS) <sup>28</sup>	S	S	S

	SR5	TRAIL	LIMITED
Color-keyed front and rear bumpers, door handles, heated power outside mirrors, black overfenders, side rocker panels, mudguards, front grille insert, rear license plate garnish, and silver-painted roof rails with black end caps	S <sup>5</sup>	-	-
Black front and rear bumpers with extensions, door handles, heated power outside mirrors, black overfenders, side rocker panels, mudguards, front grille insert, rear license plate garnish, hood scoop, smoked headlamp and taillamp bezels, and black utility roof rack with rail system	-	S	-
Color-keyed front and rear bumpers with chrome inserts, chrome door handles, color-keyed outside mirrors with turn signal indicators and puddle lamps, overfenders, side rocker panels with chrome inserts, chrome-accented front grille insert, rear license plate garnish, and chrome-painted roof rails with silver end caps	S <sup>6</sup>	-	S
Aerodynamic variable intermittent windshield wipers with mist cycle	S	S	S
Rear privacy glass and electric rear window defogger with timer and UV protection	S	S	S
Electronic rear hatch locking system	S	S	S
Front and rear mudguards	S <sup>5</sup>	S	-
Integrated tow hitch receiver <sup>7</sup>	S	S	S
Power tilt/slide moonroof with sunshade	O <sup>6</sup> /P <sup>6</sup>	S	S
Color-keyed rear spoiler with Center High-Mount Stop Lamp (CHMSL) and integrated concealed rear wiper with mist cycle	S	S	S

In-key remote keyless entry system	S	S	-
Smart Key System <sup>19</sup> with Push Button Start and rear window power up/down operation	-	-	S
Power windows with auto up/down and jam protection in all positions	S	S	S
Power sliding rear window with auto up/down and jam protection	S	S	S
Power door locks with programmable auto door lock logic	S	S	S
Orange-illuminated instrument cluster with speedometer, tachometer, coolant temperature, and fuel level gauges; LCD odometer, ECO driving indicator, twin tripmeters, and average fuel consumption	S	-	-
Optitron instrument cluster with speedometer, tachometer, coolant temperature, ECO driving indicator, odometer, twin tripmeters, average fuel consumption, and fuel gauges	-	S	S
Multi-Information Display with time, cruise range, fuel consumption, temperature and compass	S	S	S
Tilt/telescopic steering wheel with cruise control	S	-	-
Tilt/telescopic steering wheel with cruise control, audio and Bluetooth <sup>®11</sup> hands-free phone-calling controls	O <sup>6, 16</sup>	S	S
HomeLink <sup>®20</sup> universal transceiver	S	S	S
Dual sun visors with illuminated vanity mirrors	S	S	S
Backup camera <sup>13</sup> linked to an electrochromic mirror with integrated backup camera monitor	O <sup>6</sup>	S <sup>21</sup>	S <sup>21</sup>
Overhead console with Multi-terrain Select, Active Traction Control (A-TRAC), VSC <sup>22</sup> cutoff, locking rear differential and Crawl Control <sup>2</sup> switches	-	S	-
Ten (12 on three-row models) cup and bottle holders	S	S	S
Two front and one rear 12V auxiliary power outlets	S	S	S
Front and rear 120V AC power outlets	O <sup>6</sup> /P <sup>6</sup>	S	S
Gated shifter with sequential shift mode	S <sup>6</sup>	S	S
Center-console storage box with coin, tissue and pen holders	S	S	S
Foot pedal parking brake	S	S	S
Computer-controlled fuel gauge	S	S	S

Front seatbelt pretensioners with force limiters and 3-point seatbelts in all seating positions	S	S	S
Side-impact door beams	S	S	S
Daytime Running Lights (DRL) with off mode	S	S	S
Engine immobilizer <sup>29</sup>	S	S	S
Anti-theft alarm system with engine immobilizer <sup>29</sup>	O <sup>6</sup>	S	S
Emergency Locking Retractor (ELR) on driver's belt, Automatic/Emergency Locking Retractors (ALR/ELR) on passenger belts	S	S	S
Child-protector rear door locks and power window lockout	S	S	S
Second-row LATCH (Lower Anchors and Tethers for Children)	S	S	S
Rear clearance sonar	S	-	-

S = Standard    O = Optional    -- = Not Available    P = Feature is available as part of an option package.

MECHANICAL/PERFORMANCE	SR5	TRAIL	LIMITED
Engine 2.7-liter DOHC 16-valve EFI VVT-i 4-cylinder 157 hp @ 5200 rpm/178 lb.-ft. @ 3800 rpm 4.0-liter DOHC 24-valve EFI dual independent VVT-i V6 270 hp @ 5600 rpm/278 lb.-ft. @ 4400 rpm	Standard <sup>30</sup>	NA	NA
Emission rating	Available	Standard	Standard
LEV-II			
Ignition	Electronic, with Toyota Direct Ignition (TDI)		
Transmission – 4-cylinder <sup>30</sup> – V6	4-speed Electronically Controlled automatic Transmission with intelligence (ECT-i) 5-speed Electronically Controlled automatic Transmission with intelligence (ECT-i) and sequential shift mode		
Body construction	Reinforced body-on-frame construction		
Suspension	Coil-spring independent double-wishbone front suspension with stabilizer bar; coil-spring independent 4-link with lateral rod rear suspension with stabilizer bar		
Steering	Engine speed-sensing Variable Flow Control (VFC) power-assisted rack-and-pinion		
Turning circle diameter, curb to curb (ft.)	37.4	37.4	37.4
Brakes	Power-assisted 4-wheel ventilated disc brakes with 4-wheel Anti-lock Brake System (ABS) (Multi-Terrain ABS on 4Runner Trail), Electronic Brake-force Distribution (EBD) and Brake Assist <sup>24</sup>		

EXTERIOR DIMENSIONS (in.)	SR5	TRAIL	LIMITED
Overall height, unloaded	71.5	74.2	71.5
Overall width/length	75.8/189.9	75.8/189.9	75.8/189.9
Wheelbase	109.8	109.8	109.8
Track (front/rear)	63.2/63.2	63.2/63.2	63.2/63.2

INTERIOR DIMENSIONS front/second/rear (in.)	SR5	TRAIL	LIMITED
Headroom with moonroof <sup>6</sup>	39.3/38.6/34.3 38.6/38.6/34.3	NA 38.6/38.6/NA	NA 38.6/38.6/34.3
Shoulder room	57.8/57.8/57.7	57.8/57.8/NA	57.8/57.8/57.7
Hip room	56.5/55.7/43.3	56.5/55.7/NA	56.5/55.7/43.3
Leg room	41.7/32.9/29.3	41.7/32.9/NA	41.7/32.9/29.3
Seating capacity (standard/with optional third-row seat)	5/7 <sup>6</sup>	5	5/7
OFF-HIGHWAY	2WD	4WD <sup>6</sup>	4WD

Approach/departure angle (degrees) (4-cyl/V6)	31/26 / 24/24	NA / 25/24	NA / 33/26	NA / 24/24	NA / 25/24
Ground clearance (in.)	9.0	9.6	9.6	9.0	9.6
WEIGHTS AND CAPACITIES	2WD	4WD <sup>6</sup>	4WD	2WD	4WD

Curb weight (lb.) – 4-cylinder model <sup>30</sup> – V6 models	4295 4400	NA 4675	NA 4750	NA 4525	NA 4805
Gross Vehicle Weight Rating (GVWR) (lb.) – 4-cylinder model <sup>30</sup> – V6 models	5900 6100	NA 6300	NA 6300	NA 6100	NA 6300
Towing capacity <sup>7, 31</sup> (lb.) – 4-cylinder model <sup>30</sup> – V6 models	2000 5000	NA 5000	NA 5000	NA 5000	NA 5000

Cargo volume <sup>32</sup> (cu. ft.) behind front/rear seats behind front/rear seats (with sliding deck) behind front/second-row/rear seats	89.7/47.2 88.8/46.3 88.8/46.3/9.0	NA 88.8/46.3 NA	NA 88.8/46.3 88.8/46.3/9.0
Fuel tank (gal.)	24.0	24.0	24.0

TIRES			
Size – Standard	P265/70R17	P265/70R17	P245/60R20
Type	Mud-and-Snow	Mud-and-Snow	Mud-and-Snow
Spare	Full-size, mounted under body		

MILEAGE ESTIMATES mpg city/highway/combined <sup>33</sup>			
2WD (4-cylinder <sup>30</sup> /V6)	18/23/20 / 17/23/19	NA	NA / 17/23/19
4WD (V6)	17/22/19	17/22/19	17/22/19

The Toyota 4Runner is designed to meet most off-road driving requirements. Abusive use may result in bodily harm or damage. Toyota encourages responsible operation to protect you, your vehicle and the environment. Seatbelts should be worn at all times. Please do not allow passengers to ride in the cargo area. Towing hitch receivers/ball mount kits are not intended to provide crash protection. For details on vehicle specifications, standard features and available equipment in your area, contact your Toyota dealer. A vehicle with particular equipment may not be available at the dealership. Ask your Toyota dealer to help locate a specifically equipped vehicle.

All information presented herein is based on data available at the time of printing, is subject to change without notice and pertains specifically to mainland U.S.A. vehicles only.



For Toyota Mobility program details, go to [www.toyota.com/mobility](http://www.toyota.com/mobility) or call the Toyota Customer Assistance Center at 1-800-331-4331



**DISCLAIMERS**

1. Toyota strives to build vehicles to match customer interest and thus they typically are built with popular options and option packages. Not all options/packages are available separately and some may not be available in all regions of the country. See [toyota.com](http://toyota.com) for information about options/packages commonly available in your area. If you would prefer a vehicle with no or different options, contact your dealer to check for current availability or the possibility of placing a special order. 2. The Toyota 4Runner is designed to meet most off-road driving requirements, but off-roading is inherently dangerous. Abusive use may result in bodily harm or vehicle damage. Toyota encourages responsible operation to protect you, your vehicle and the environment. Seatbelts should be worn at all times. 3. DAC is designed to help the driver maintain vehicle control and speed on steep downhill descents. HAC is designed to help minimize backward rolling on steep ascents. Neither system is a substitute for safe driving judgment and practices. Factors including speed, grade, surface conditions and driver input can all affect whether DAC and HAC will be effective in preventing a loss of control. Please see your *Owner's Manual* for further details. 4. Requires DVD navigation system. 5. 4-cylinder only. 6. V6 models only. 7. Before towing, confirm your vehicle and trailer are compatible, hooked up and loaded properly and that you have any necessary additional equipment. Do not exceed any Weight Ratings and follow all instructions in your *Owner's Manual*. The maximum you can tow depends on the total weight of any cargo, occupants and available equipment. 8. XM<sup>®</sup> Satellite Radio requires a monthly service fee. Includes 90-day trial subscription. See your Toyota dealer for further details. Reception of the satellite signal may vary depending on location. All fees and programming subject to change. Subscriptions subject to the terms and conditions available at [www.xmradio.com](http://www.xmradio.com). Available only in the 48 contiguous United States. 9. May not be compatible with all MP3/WMA players and like models. 10. iPod<sup>®</sup> is a registered trademark of Apple, Inc. All rights reserved. 11. The Bluetooth<sup>®</sup> technology phones listed on [toyota.com](http://toyota.com) have been tested for compatibility with Toyota vehicles. Performance will vary based on phone software version, coverage, and your wireless carrier. Phones are warranted by their manufacturer, not Toyota. 12. The navigation system is designed to assist in locating an address or point of interest. XM NavTraffic<sup>®</sup> requires a monthly service fee and hardware and is designed to provide real-time traffic or alternative routes of travel. Includes 90-day trial subscription. Discrepancies may be encountered between the system and your actual location. Road system changes may affect the accuracy of the information provided. Rely on your common sense to decide whether to follow a specified route. Detailed coverage not available in every city or roadway. Periodic navigation updates available at an additional cost. See your *Navigation System Owner's Manual* for further details. 13. The backup camera does not provide a comprehensive view of the rear area of the vehicle. You should also look around outside your vehicle and use your mirrors to confirm rearward clearance. Cold weather will limit effectiveness and view may become cloudy. 14. Requires Kinetic Dynamic Suspension System (KDSS). 15. 4-cylinder SR5 model requires sliding rear cargo deck. 16. Requires AM/FM/MP3 CD player with eight speakers, integrated XM Satellite Radio with 90-day trial subscription, USB port with iPod<sup>®</sup> connectivity, and hands-free phone capability and music streaming via Bluetooth<sup>®</sup> wireless technology. 17. Third-row seating removes sliding rear cargo deck on Limited models. 18. 4-cylinder SR5 model requires Sport fabric-trimmed 8-way power-adjustable driver's seat with power lumbar support and 4-way power-adjustable passenger seat. 19. The Smart Key System may interfere with some pacemakers or cardiac defibrillators. If you have one of these medical devices, please talk to your doctor to see if you should deactivate this system. 20. HomeLink<sup>®</sup> is a registered trademark of Johnson Controls, Inc. 21. The backup camera uses the navigation system display on vehicles so equipped. 22. Vehicle Stability Control (VSC) is an electronic system designed to help the driver maintain vehicle control under adverse conditions. It is not a substitute for safe driving practices. Factors including speed, road conditions and driver steering input can all affect whether VSC will be effective in preventing a loss of control. Please see your *Owner's Manual* for further details. 23. 4-wheel Traction Control (TRAC) in 4WD mode only. Rear-wheel Traction Control (TRAC) in 2WD mode. 24. Brake Assist is designed to help the driver take full advantage of the benefits of ABS. It is not a substitute for safe driving practices. Braking effectiveness also depends on proper brake-system maintenance and tire and road conditions. 25. Available beginning fall 2009 on select Toyota models. Contact with the Safety Connect<sup>™</sup> response center is dependent upon the telematics device being in operative condition, cellular connection availability, and GPS satellite signal reception, which can limit the ability to reach the response center or receive emergency service support. Enrollment and Telematics Subscription Service Agreement required. One-year trial subscription available only with new vehicle purchase of Safety Connect-equipped vehicles. Additional subscription terms available; charges vary by subscription term selected. 26. All the airbag (AB) systems are Supplemental Restraint Systems. All ABs (if installed) are designed to inflate only under certain conditions and in certain types of severe collisions: frontal and knee ABs typically inflate in frontal collisions; side and side curtain ABs in side collisions; Roll-Sensing Curtain ABs at a severe tilt degree, roll or lateral G-force. In all other accidents, the ABs will not inflate. To decrease the risk of injury from an inflating AB, always wear seatbelts, sit upright in the middle of the seat as far back as possible and do not lean against the door. Do not put objects in front of an AB or around the seatback. Do not use a rearward-facing child seat in any front passenger seat. The force of an inflating AB may cause serious injury or death. See your *Owner's Manual* for further information/warnings. 27. Active headrests can help reduce the extent of whiplash in certain types of rear-end collisions. 28. The Toyota Tire Pressure Monitor alerts the driver when tire pressure is critically low. For optimal tire wear and performance, tire pressure should be checked regularly with a gauge; do not rely solely on the monitor system. See your *Owner's Manual* for details. 29. The engine immobilizer is a state-of-the-art anti-theft system. When you insert your key into the ignition switch or bring a Smart Key fob into the vehicle, the key transmits an electronic code to the vehicle. The engine will only start if the code in the transponder chip inside the key or Smart Key fob matches the code in the vehicle's immobilizer. Because the transponder chip is embedded in the key or Smart Key fob, it can be costly to replace. If you lose a key or Smart Key fob, your Toyota dealer can help. Alternatively, you can find a qualified independent locksmith to perform high-security key services by consulting your local Yellow Pages or by contacting [www.aloa.org](http://www.aloa.org). 30. 4-cylinder model expected availability late 2009. 31. Calculated with new SAE J2807 method. 32. Cargo and load capacity limited by weight and distribution. 33. 2010 EPA-estimated mileage. Actual mileage will vary.





Our eyes are always on the road ahead. Striving to find ways to help you be safe. Go farther on a tank of gas. To help the earth go further on its limited resources. Moving Forward is embedded in our DNA. It's shared by our dealers, and ultimately inspired by our customers. [toyota.com](http://toyota.com) 1-800-GO-TOYOTA

#### FOCUS ON SUSTAINABILITY

Toyota encourages their printing partners to embrace environmentally responsible business practices, including compliance with nationally recognized certification requirements. These partners adhere to either FSC (Forest Stewardship Council) or SFI (Sustainable Forestry Initiative) guidelines that ensure Toyota brochures use paper from well-managed forests through a chain of custody – from the tree to the paper mill, from the paper mill to the printer, then, from the printer to Toyota.

100% of the electricity purchased by one of Toyota's print partners is generated by renewable wind energy. Another print partner installed solar panels and expects their company's energy demands to decrease by 30% and reduce their carbon emissions by 630 tons per year. This brochure is printed on Sappi's Opus Gloss paper. 100% of the electricity used to manufacture this paper was generated by Green-e® certified renewable energy sources. Opus Gloss uses 10% post-consumer recovered fiber and is FSC certified, sourcing fiber from sustainably managed forests.

©2009 Toyota Motor Sales, U.S.A., Inc. PT0-174 (10/09) 00617-104RU Litho in U.S.A.



VENZA



AVALON



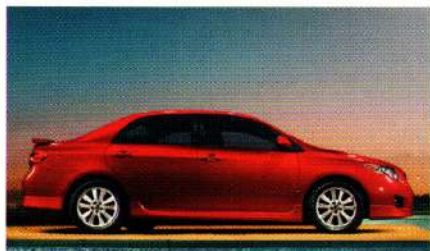
CAMRY



CAMRY SOLARA



PRIUS



COROLLA



YARIS



MATRIX



TUNDRA



CAMRY HYBRID



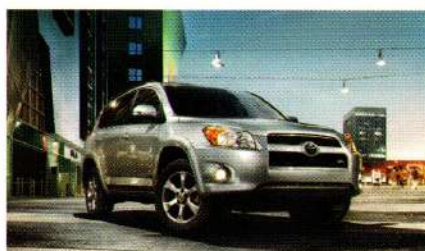
TACOMA



LAND CRUISER



4RUNNER



RAV4



HIGHLANDER HYBRID



FJ CRUISER



SEQUOIA



HIGHLANDER



SIENNA



Hybrid Synergy Drive,<sup>®</sup> powering the Prius, Camry Hybrid and Highlander Hybrid, combines a clean-burning gas engine with an efficient electric motor to deliver excellent fuel economy, low emissions and performance.