

ACCENT

2019



DEP
DEALER ePROCESS



Accent SUPERSTRUCTURE™ shown, made with our Advanced High Strength Steel.

The H-Factor.

What is the H-Factor? It means you can have it all.

Our company believes in pushing the boundaries and challenging conventional thinking. Our very name, “Hyundai”, stands for modernity in the Korean language and it is this one word that helps represent everything we stand for. We don’t approach vehicle development in a traditional way. Our company is structured differently. We think differently. We find the modern way. It’s our mission to offer top quality, feature-rich vehicles at an affordable price.

We offer elite quality through meticulous design and painstaking craftsmanship. Our three design centres in Korea, the U.S. and Europe compete against each other to bring you cutting-edge designs — designs that not only look stunning but are also aerodynamic and fuel efficient.

We are the only global automaker to manufacture our own steel because, simply put, we just weren’t satisfied with what was available.

We test our vehicles in areas like Canada’s Arctic, our proving grounds in the Mojave Desert and on Germany’s world-famous Nürburgring circuit to deliver the durability and reliability you demand. And not only do we package our vehicles with advanced safety and technology, we back all our vehicles with one of the best automotive warranties in the industry. This means you really can have it all, quality and value together.

That’s the H-Factor.





DEP
DEALER ePROCESS

You can have it all.

With the Accent, you really can have it all! Enjoy class-leading cargo room* and a wealth of features such as a standard rearview camera, available heated steering wheel and available Android Auto™ and Apple CarPlay™ connectivity. Even better, you can choose between the 4-door or 5-door design, whichever best fits your style.





DEP
DEALER ePROCESS

Bold style.

The Accent features our latest design signature, a bold cascading grille inspired by the flowing descent of molten steel. The assertive front profile features sculpted hood lines that complement the available LED headlights and daytime running lights that guide your way.



Available LED headlights



Available fog lights



Available LED side repeaters



Available 17" alloy wheels





DEP
DEALER ePROCESS

5-door Ultimate model with
colour package shown.

Feature-packed.

Inside the unbelievably spacious interior, the Accent is feature-packed. Keep warm on your journeys with the available heated front seats and steering wheel, and enjoy added convenience with the available Smart Trunk^{*} that will open automatically when it senses the proximity key is behind the vehicle. You can also stay connected, safely, with available Apple CarPlayTM^Δ and Android AutoTM[◇] to access your favourite smartphone apps via the available 7.0" touch-screen display.



Standard 5.0" touch-screen with rearview camera



Available Bluetooth[®] hands-free phone system



Available automatic climate control



Available 7.0" touch-screen with Apple CarPlayTM^Δ and Android AutoTM[◇]



Available heated front seats and heated steering wheel



Available proximity keyless entry with push-button ignition

^ΔAvailable on 4-door models only. Key FOB must be within three feet for more than three seconds.

Efficient and fun.

The Accent features an eco-efficient 1.6L Gasoline Direct Injection engine that generates 130 horsepower and 119 lb-ft of torque. Choose between the 6-speed manual and available 6-speed SHIFTRONIC® automatic transmission, and drive without having to compromise power or efficiency.



Aerodynamic air vents

Integrated air vents on each side of the lower front bumper minimize air twisting around the wheel to provide less resistance. The result is enhanced stability and fuel efficiency.





DEP
DEALER ePROCESS

Hatchback versatility.

For those who prefer a hatchback design, the Accent 5-door model offers versatility and the same great styling.



5-door model shown.

Best-in-class cargo space[†]

Class-leading cargo space of 616 litres means that you can enjoy more space than the Nissan Versa Note, Honda Fit, and even the Jeep Renegade.



5-door model shown.

60/40 split-fold rear seats

Rear seats feature a 60/40 split-fold so you can accommodate longer items while still hosting a rear seat passenger.





DEP
DEALER ePROCESS



Strong to the core.

At the core of the Accent is the SUPERSTRUCTURE™, a state-of-the-art platform built with our very own Advanced High Strength Steel to deliver exceptional stiffness and strength. In the event of a collision, the SUPERSTRUCTURE™ helps protect occupants inside the vehicle by absorbing harmful energy and redirecting it away from the passenger compartment.



The SUPERSTRUCTURE™



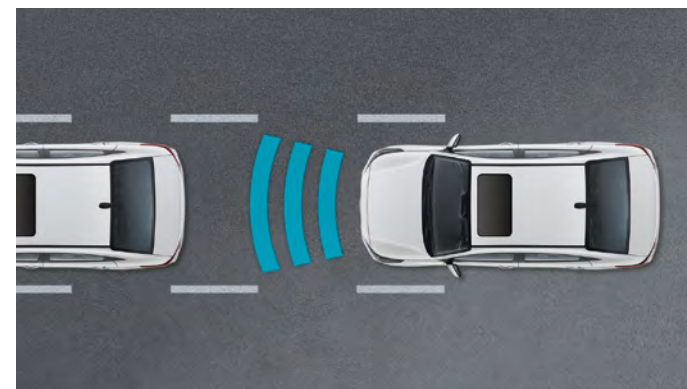
Rearview camera with dynamic guidelines

Reverse out of narrow driveways and parallel park with greater confidence with the standard rearview camera.



6 airbags¹

The Accent is equipped with six standard airbags: two advanced front airbags, two seat-mounted side-impact airbags and two side-curtain roof-mounted airbags with rollover sensors.



Forward Collision-Avoidance Assist²

This available safety feature uses radar to detect rapidly closing speeds in relation to the vehicle ahead. If a potential forward collision is detected, audible and visual warning notifications alert the driver. If the driver does not react to avoid the impact, the system can provide full braking assistance to help avoid a potential collision.

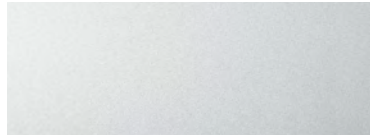


Colours and wheels

Exterior colours*



Aurora Black



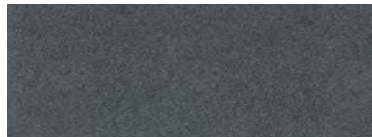
Snow White Pearl



Silky Silver



Azure Blue
Not available on Essential model



Urban Grey
Not available on Essential model



Fiery Red
Not available on Essential model

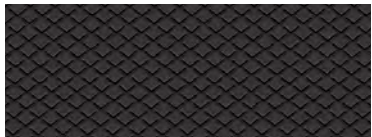
Interior colours*



Black cloth
Standard on 4-door Essential with Comfort Package and Preferred models
Standard on 5-door Essential, Essential with Comfort Package and Preferred models



Black premium cloth
Standard on 4-door Ultimate model



Black premium cloth
Standard on 5-door Ultimate model



Black cloth/leatherette combination with red accents
Available on 5-door Ultimate model (with automatic transmission only)

Wheels



15" steel wheel
Standard on Essential and Essential with Comfort Package models



15" alloy wheel
Standard on Preferred model



17" alloy wheel
Standard on Ultimate model

*Exterior and interior colour options and/or availability by model may change without notice. Choice of interior colour is dependent on model and/or exterior colour selection. Colours shown are for reference only and may vary from the actual hue. Visit hyundaicanada.com or see your dealer for details.



Dimensions

Overall width (excluding side mirrors)



Overall length



Overall height



Accessories



Rubber Floor Mats

Protect the interior of your Hyundai from everyday dirt and debris with custom-made floor mats. Remove carpet mats prior to installation.



Reversible Cargo Tray

Add years to the interior of your Hyundai by protecting it from spills and messy loads with a durable, custom-fit reversible cargo tray.



Mud Guard Kit

Custom-fit mud guards help keep the dirt and debris of everyday driving where it belongs.



Door Pocket Clear Film

A clear protective film that lies behind the door handle to help prevent paint damage to this commonly scratched area.

For more information on additional accessories please visit hyundaicanada.com, or see your dealer for details.



Model summary

Accent 5-door

Essential – Standard equipment includes:

- 1.6L engine
- 6-speed manual transmission
- Hood insulator
- 15" Steel wheel with full size cover
- Rear spoiler
- 6 airbags
- Hill-start Assist Control
- Vehicle Stability Management, Electronic Stability Control, Traction Control System, Anti-lock Braking System
- 60/40 split-fold rear seatback
- 5.0" colour touch-screen display
- 4-speaker AM/FM/MP3 audio system
- Adjustable rear seat headrests (outboard seats only)
- Central door lock/unlock
- Cloth seats
- Manual window control (front and rear)
- Luggage covering
- Low washer fluid warning
- Rearview camera
- Sliding sunvisor with mirror (driver and front passenger)
- USB/auxiliary connectivity

Essential with Comfort Package – Includes Essential standard equipment plus:

- 6-speed automatic transmission with SHIFTRONIC®
- Heated, power-adjustable side mirrors
- Bluetooth® hands-free phone system
- Manual air conditioning
- Map lamps with sunglasses holder
- Power windows with driver's auto-down
- Steering wheel-mounted audio and telephone controls

Preferred – Includes Essential with Comfort Package standard equipment plus:

DOES NOT INCLUDE 6-SPEED AUTOMATIC TRANSMISSION

- 6-speed manual transmission
- 15" Alloy wheels
- Automatic headlights
- 7.0" LCD touch-screen display
- 6-speaker AM/FM/SiriusXM™/MP3 audio system
- Android Auto™ and Apple CarPlay™
- Bluetooth® hands-free phone system with voice recognition
- Cruise control
- Centre console with sliding armrest
- Heated front seats
- Keyless entry with escort lighting
- Passenger seatback storage pocket
- Telescopic steering column
- USB charging outlet (for rear seats)
- Optional:**
6-speed automatic transmission with SHIFTRONIC®

Ultimate – Includes Preferred standard equipment plus:

- 17" Alloy wheels
- Window belt moulding, chrome
- Chrome exterior door handles
- Fog lights
- LED daytime running lights
- LED headlights
- LED side mirror signal repeaters
- Power sunroof
- 4-wheel disc brakes
- Forward Collision-Avoidance Assist
- Automatic climate control with auto defogger
- Heated, leather-wrapped steering wheel
- Proximity keyless entry with push-button ignition
- Supervision 3.5" mono LCD cluster
- Optional:**
6-speed automatic transmission with SHIFTRONIC®
- Optional colour package (with automatic transmission only):**
Cloth seating with red leatherette accents

Accent 4-door

Essential with Comfort Package – Standard equipment includes:

- 1.6L engine
- 6-speed automatic transmission with SHIFTRONIC®
- Hood insulator
- 15" Steel wheel with full size cover
- Heated, power-adjustable side mirrors
- 6 airbags
- Hill-start Assist Control
- Vehicle Stability Management, Electronic Stability Control, Traction Control System, Anti-lock Braking System
- 60/40 split-fold rear seatback
- 5.0" colour touch-screen display
- 4-speaker AM/FM/MP3 audio system
- Adjustable rear seat headrests (outboard seats only)
- Bluetooth® hands-free phone system
- Cloth seats
- Driver seat height adjustment (pumping device)
- Low washer fluid warning
- Manual air conditioning
- Map lights with sunglasses holder
- Power windows with driver's auto-down
- Rearview camera
- Sliding sunvisor with mirror (driver and front passenger)
- Steering wheel-mounted audio and telephone controls
- USB/auxiliary connectivity

Preferred – Includes Essential with Comfort Package standard equipment plus:

DOES NOT INCLUDE 6-SPEED AUTOMATIC TRANSMISSION

- 6-speed manual transmission
- 15" Alloy wheels
- Automatic headlights
- 7.0" LCD touch-screen display
- 6-speaker AM/FM/SiriusXM™/MP3 audio system
- Android Auto™ and Apple CarPlay™
- Bluetooth® hands-free phone system with voice recognition
- Cruise control
- Centre console with sliding armrest
- Heated front seats
- Keyless entry with escort lighting
- Passenger seatback storage pocket
- Telescopic steering column
- USB charging outlet (for rear seats)
- Optional:**
6-speed automatic transmission with SHIFTRONIC®

Ultimate – Includes Preferred standard equipment plus:

- 6-speed automatic transmission with SHIFTRONIC®
- 17" Alloy wheels
- Window belt moulding, chrome
- Chrome exterior door handles
- Fog lights
- LED daytime running lights
- LED headlights
- LED side mirror signal repeaters
- Power sunroof
- 4-wheel disc brakes
- Forward Collision-Avoidance Assist
- Automatic climate control with auto defogger
- Heated, leather-wrapped steering wheel
- Proximity keyless entry with push-button ignition
- Smart Trunk – hands-free
- Supervision 3.5" mono LCD cluster



For more detailed specifications and information, please visit hyundaicanada.com or visit your dealer today.

Specifications

	Essential 5-DOOR	Essential with Comfort Package 4-DOOR / 5-DOOR	Preferred 4-DOOR / 5-DOOR	Ultimate 4-DOOR / 5-DOOR
Performance				
Engine				
1.6L Gasoline Direct Injection 4-cylinder engine (130 horsepower, 119 lb-ft torque)	•	•	•	•
Transmission				
6-speed manual	•	–	•	–/•
6-speed automatic with SHIFTRONIC® manual mode	–	•	◦	•/◦
Brakes				
Front disc brakes and rear drum brakes	•	•	•	–
4-wheel disc brakes	–	–	–	•
Exterior				
Wheels				
Spare tire	•	•	•	•
15" x 5.5J steel	•	•	–	–
15" x 5.5J aluminum alloy	–	–	•	–
17" x 6.5J aluminum alloy	–	–	–	•
Exterior lighting				
Headlights with escort function	–	–	•	•
Automatic headlights	–	–	•	•
Fog lights	–	–	–	•
LED headlights with LED accents	–	–	–	•
Outside mirrors				
Body colour, power adjustable heated side mirrors	–	•	•	•
LED side mirror signal repeaters	–	–	–	•
Mouldings and trim				
Grille, black	•	–	–	–
Grille, chrome	–	•	•	•
Door handles, chrome	–	–	–	•
Window belt moulding, chrome	–	–	–	•
Wipers				
2-speed/intermittent windshield wipers	•	•	•	•
Other				
Power sunroof	–	–	–	•
Interior				
Seating				
60/40 split-fold rear seatback	•	•	•	•
6-way manually adjustable driver's seat	•	•	•	•
4-way manually adjustable front passenger's seat	•	•	•	•
Driver's seat height adjuster (pump device)	•	•	•	•
Seating surfaces, cloth	•	•	•	–
Heated front seats	–	–	•	•
Seating surfaces, premium cloth	–	–	–	•
Seating surfaces, cloth with red leatherette accents — 5-door only	–	–	–	–/◦

• Standard – Not Available ◦ Optional

	Essential 5-DOOR	Essential with Comfort Package 4-DOOR / 5-DOOR	Preferred 4-DOOR / 5-DOOR	Ultimate 4-DOOR / 5-DOOR
Multimedia				
USB and MP3 auxiliary input jacks	•	•	•	•
Rearview camera	•	•	•	•
5.0" colour touch-screen AM/FM/MP3 audio system with 4 speakers	•	•	–	–
Bluetooth® hands-free phone system	–	•	•	•
7.0" colour touch-screen AM/FM/SiriusXM™/MP3 audio system with 6 speakers	–	–	•	•
Android Auto™◦ and Apple CarPlay™◦	–	–	•	•
HVAC				
Rear window defroster, electronic with timer	•	•	•	•
Cabin air filter	•	•	•	•
Air conditioning, manual climate control	–	•	•	–
Air conditioning, automatic climate control	–	–	–	•
Steering wheel				
Tilt	•	•	•	•
Mounted audio controls	–	•	•	•
Mounted Bluetooth® controls	–	•	–	–
Mounted Bluetooth® controls with voice recognition	–	–	•	•
Telescoping	–	–	•	•
Heated, leather-wrapped	–	–	–	•
Convenience features				
Power door locks	•	•	•	•
Sliding sunvisor with mirror (driver & passenger)	•	•	•	•
Map lights with sunglasses holder	–	•	•	•
Power windows with driver's auto-down	–	•	•	•
Cruise control (steering wheel-mounted)	–	–	•	•
Remote keyless entry system with panic alert	–	–	•	•
Front centre console (sliding armrest storage box)	–	–	•	•
USB charging outlet (for rear seats)	–	–	•	•
Proximity keyless entry system with push-button ignition	–	–	–	•
Smart Trunk – 4-door only	–	–	–	•/–
Safety				
Airbags (6) – Front impact (2), front seat-mounted side-impact (2), front-rear side curtain (2)	•	•	•	•
Anti-lock Braking System with Electronic Brake-force Distribution and Brake Assist	•	•	•	•
Hill-start Assist Control	•	•	•	•
Vehicle Stability Management, Electronic Stability Control with Traction Control System	•	•	•	•
Forward Collision-Avoidance Assist	–	–	–	•
Fuel economy (Litres/100km)^				
M/T – City / Highway / Combined	8.2 / 6.3 / 7.3			
A/T – City / Highway / Combined	8.2 / 6.2 / 7.3			

5 YEAR/100,000 KM
Comprehensive Limited Warranty†
YEAR/100,000 KM
Powertrain Warranty
YEAR/100,000 KM
Emission Warranty
YEAR/UNLIMITED KM
Roadside Assistance Program**

One of the best-backed warranties in Canada.

You will see that a number of our vehicles have received multiple awards from the most reputable third-party organizations, so you can take their word when it comes to the quality of our vehicles. This quality is equally matched by the quality of our warranty. We stand confidently behind our products to give you ultimate peace of mind with a 5-year/100,000 kilometre Comprehensive Limited Warranty†. We also provide a 5-year/Unlimited kilometre Roadside Assistance Program** featuring flat tire changing, lockout service and more. Just one toll-free call away, 24 hours a day.

 **Customer
Care**
hyundaicanada.com/customercare

Hyundai Auto Canada Corp.
hyundaicanada.com



™/®The Hyundai name, logos, product names, feature names, images and slogans are trademarks owned or licensed by Hyundai Auto Canada Corp.. Specifications, features, illustrations, accessories, materials and equipment and all other information shown in this brochure are based on the latest information available at the time of publication. Although descriptions are believed to be correct, accuracy cannot be guaranteed. Hyundai Auto Canada Corp. reserves the right to make any changes or modifications at any time, without notice or obligation, including, without limitation, in colour, specifications, features, accessories, materials, equipment and models. Some vehicles are shown with optional equipment. All Hyundai warranties have no deductible. †Hyundai's Comprehensive Limited Warranty coverage covers most vehicle components against defects in workmanship under normal use and maintenance conditions. **Hyundai's 24-Hour Roadside Assistance Program is a limited service and does not cover certain costs or expenses. Roadside Assistance is not a warranty. †Fuel economy figures are based on manufacturer's testing and are used for comparison purposes only. Actual fuel efficiency may vary based on driving conditions and the addition of certain vehicle accessories. †Accent 5-door model only. Vehicle class defined by Global Automakers of Canada segmentation for the Sub-Compact Car segment as of June 2018. Vehicle comparison based on Global Automakers of Canada data as of June 2018. †Apple CarPlay™ works with iPhone 5s, iPhone 5c, iPhone 5 and later models running the latest version of iOS 7 and above. CarPlay™ may not be available on all devices and may not be available in all countries or regions. Visit www.apple.com for further details and any applicable limitations. Subject to app compatibility. Apple and Apple CarPlay are trademarks of Apple Inc.. †Android Auto™ is compatible with Android phones running Android Lollipop or newer. Android Auto may not be available on all devices and is not available in all countries or regions. Additional apps may be required. Visit www.android.com for further details and any applicable limitations. Subject to app compatibility. Android and Android Auto are trademarks of Google Inc.. †The Supplemental Restraint (Airbag) System (SRS) is designed to work with the three-point seatbelt system. The SRS deploys in certain frontal and/or side-impact conditions where significant injury is likely. The SRS is not a substitute for seatbelts, which should be worn at all times. Children under the age of 13 should be restrained securely in the rear seat. NEVER place a child seat in the front seat of a Hyundai vehicle. †Forward Collision-Avoidance Assist (FCA) is designed to detect vehicles that are directly in front of the vehicle. FCA will not detect all vehicles and objects. FCA may not work on winding or hilly roads, during certain weather conditions such as rain, snow, fog and any other times of limited visibility. FCA engages at 10km/h. FCA is not a substitute for safe driving. Always check your surroundings when driving. See Owner's Manual for further details and limitations. The SiriusXM™ name is a trademark of SiriusXM Satellite Radio Inc.. Bluetooth® word mark and logos are registered trademarks owned by Bluetooth SIG, Inc.. All other trademarks and trade names are those of their respective owners.

019SA-L100

DEALER ePROCESS