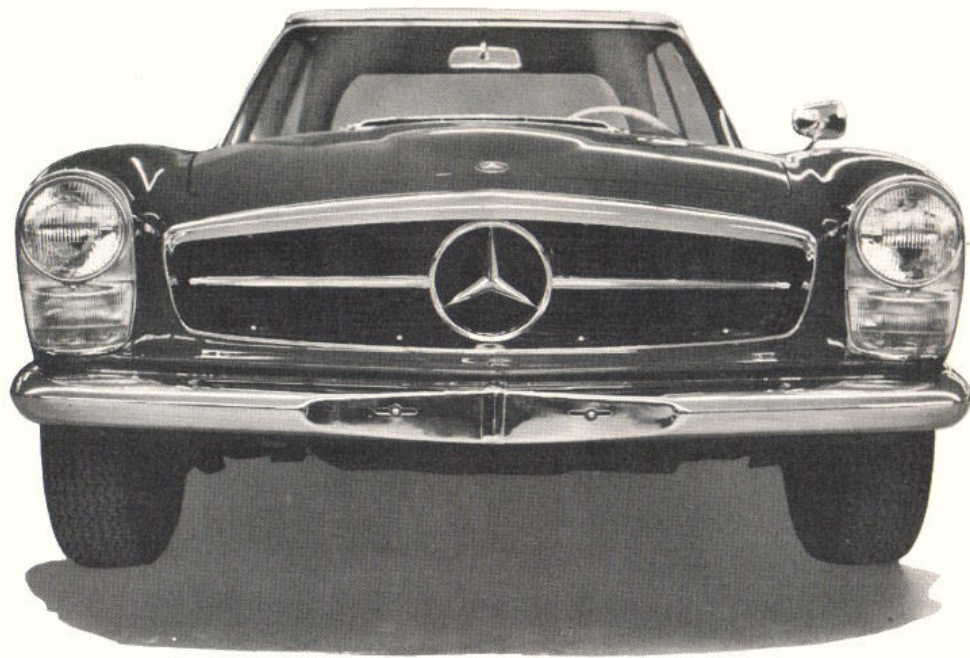




MERCEDES-BENZ

Passenger Cars

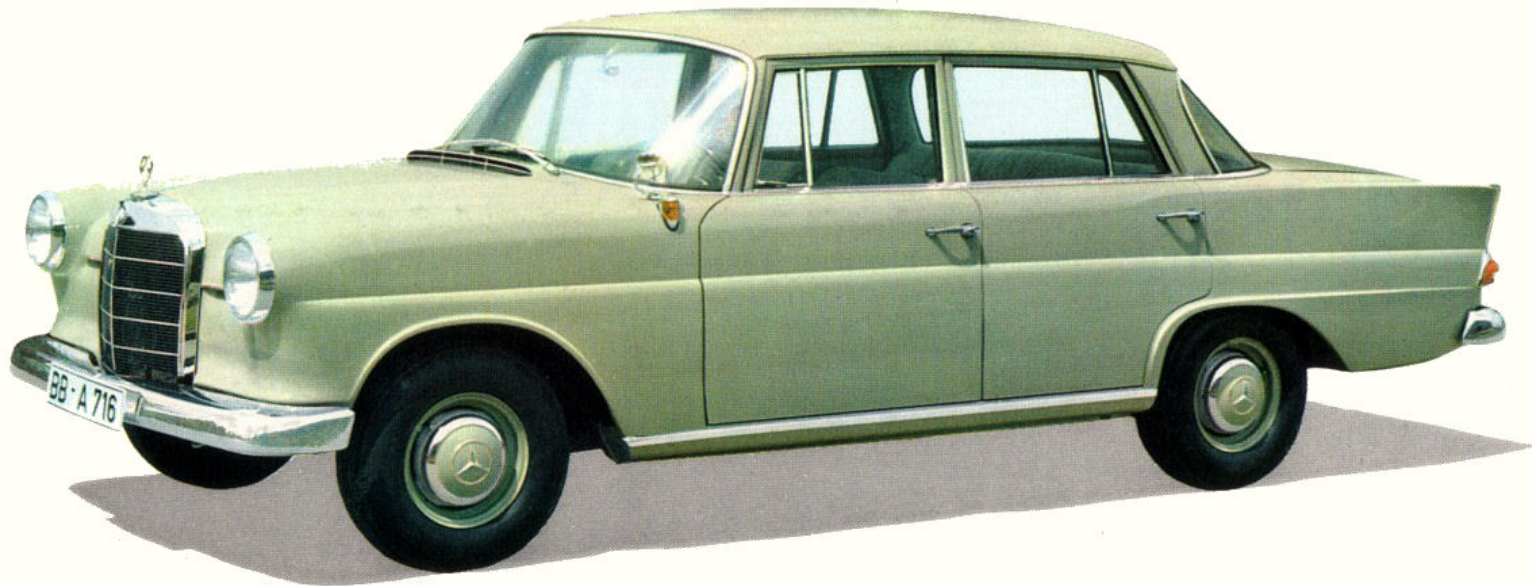




Mercedes-Benz automobiles are among the finest motor cars in the world.

They are built for the very discriminating . . . engineered to meet the highest standards of quality and safety . . . designed to appeal to good taste for many years to come.

To own a Mercedes-Benz is to enjoy the ultimate in motoring safety, pleasure and prestige.



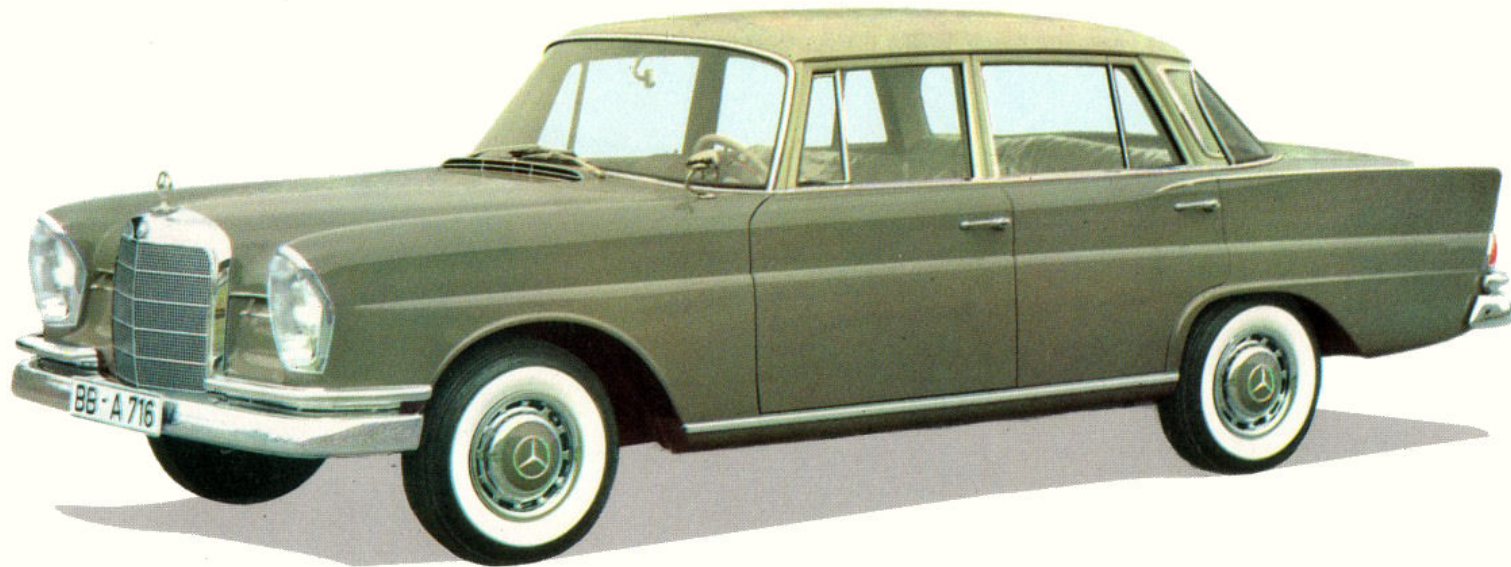
MODEL 190/190D

190: 4-Door sedan, 4-cylinder gasoline engine, 4-speed transmission. Power brakes. Automatic transmission optional.
190D: Same but with economical 4-cylinder diesel engine.



MODEL 220

4-door sedan, 6-cylinder gasoline engine, power brakes.
Automatic transmission, power steering optional.



MODEL 220S/220SE

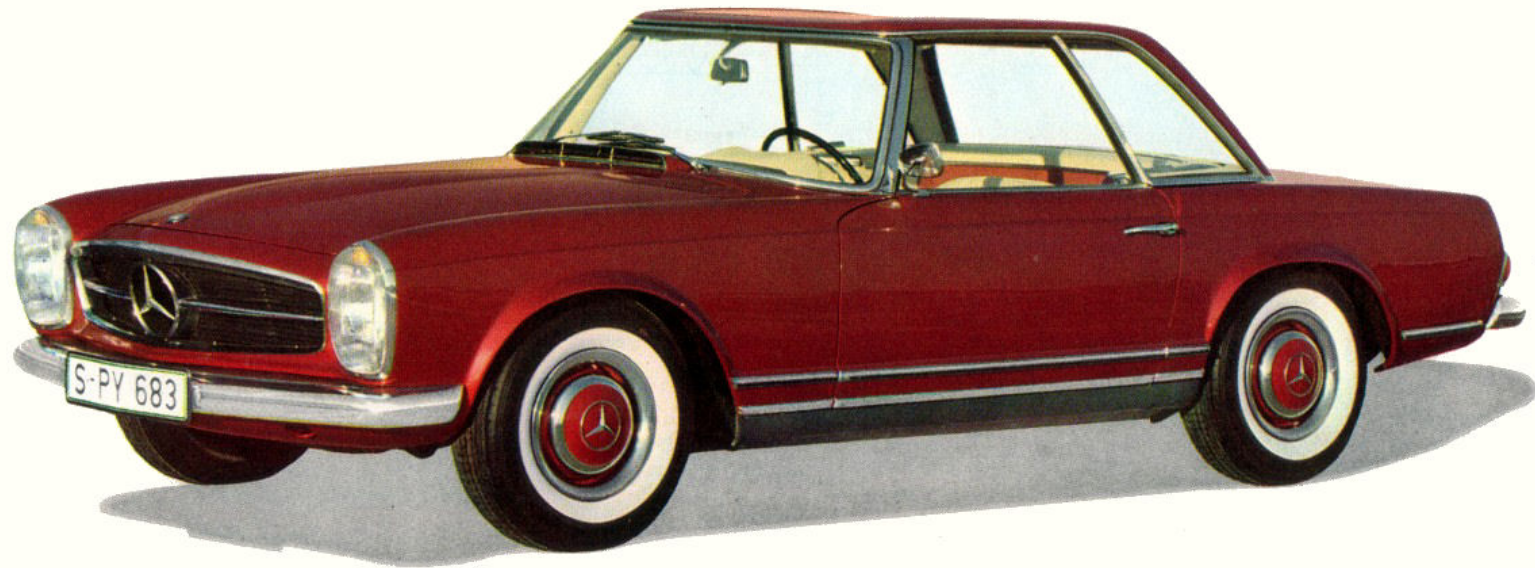
220S: 4-door sedan, 6-cylinder gasoline engine, power brakes, disc type front. Automatic transmission, power steering optional.

220SE: Same but with 6-cylinder fuel injection engine.



MODEL 220SE COUPE/CONVERTIBLE

2-door coupe or convertible. 6-cylinder fuel injection engine, 4-speed floor shift, power brakes, disc type front. Automatic transmission, power steering optional.



MODEL 230SL

Coupe roadster with detachable hardtop or available as roadster with flush folding soft top. 6-cylinder fuel injection engine, twin circuit power brake system, disc type front. Automatic transmission, power steering optional.



MODEL 300SE COUPE/CONVERTIBLE

2-door coupe or convertible, 6-cylinder fuel injection engine. Equipped with automatic transmission, power steering, 4-wheel power disc brakes, limited slip differential and air suspension.



MODEL 300SE - 300SE LONG

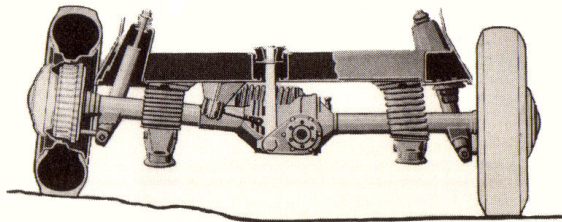
4-door sedan, 6-cylinder fuel injection engine. Equipped with automatic transmission, power steering, 4-wheel power disc brakes, limited slip differential and air suspension.

300SE Long: Same but with increased space in rear compartment.



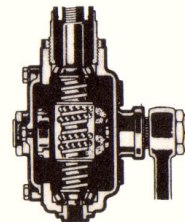
GRAND MERCEDES SEDAN - LIMOUSINE

V-8 fuel injection engine. Automatic transmission, power disc brakes all wheels, power steering, three-way power seats, power windows, adjustable steering wheel, central locking system, limited slip differential, air suspension, shock absorbers adjustable while driving.



SWING AXLE

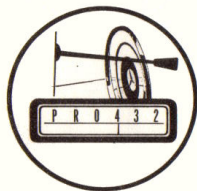
Low pivot single joint swing axle with compensating spring provides constant road contact, regardless of road conditions, and exceptional cornering ability. This is one of many distinctive Mercedes-Benz engineering features that provide greater safety and riding comfort.



STEERING

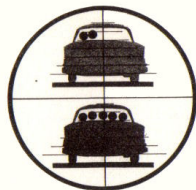
Recirculating ball type with automatic adjustment and steering shock absorber for effortless and safe handling.

MERCEDES-BENZ QUALITY — ENGINEERING EXCELLENCE — TIMELESS VALUE



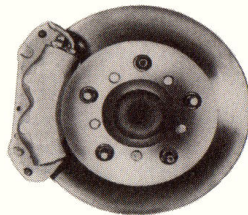
AUTOMATIC TRANSMISSION

4 forward speeds are engaged automatically for smooth, efficient, economical performance. Choice of 3 driving ranges can be selected manually.



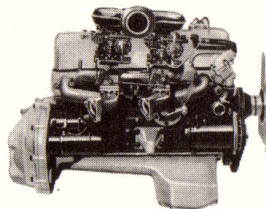
AIR SUSPENSION

Provides soft springing and efficient level control at all times, maintains constant ground clearance and reduced road noise. Automatically corrects uneven load distribution.



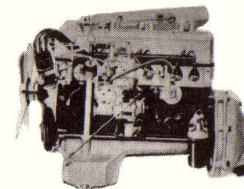
HYDRAULIC DISC BRAKES

The ultimate in safe, smooth, powerful braking. Disc brakes are fade-proof, eliminate front end dive and uneven stops, require less maintenance and are unaffected by dirt and water.



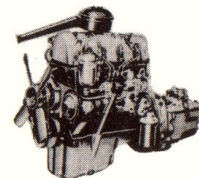
GASOLINE ENGINE

With overhead camshaft and valves. 190 engine has single-barrel carburetor; 220 uses two down-draft carburetors; 220S uses two compound down-draft carburetors.



FUEL INJECTION ENGINE

Intermittent injection type meters precise amount of fuel required at any engine speed and provides better fuel distribution for greater economy and better performance.



DIESEL ENGINE

World-famous for low operating cost and longer engine life. Exclusive pre-combustion chamber system assures more complete combustion and excellent cold-weather starting.

MERCEDES-BENZ MODEL SPECIFICATIONS

MODEL	190	190D	220	220S	220SE	220SE	300SE	300SE LONG	300SE	230SL	THE GRAND MERCEDES	
BODY STYLE	4-Door Sedan	4-Door Sedan	4-Door Sedan	4-Door Sedan	4-Door Sedan	Coupe and Convertible	4-Door Sedan	4-Door Sedan	Coupe and Convertible	Roadster Coupe	Sedan	Limousine
WHEEL BASE (INCHES)	106.3	106.3	108.2	108.2	108.2	108.2	108.3	112.3	108.3	94.5	126	153.3
OVERALL LENGTH (INCHES)	186.5	186.5	192.2	192.2	192.2	192.2	192.2	196	192.2	169	218	246
OVERALL WIDTH (INCHES)	70.7	70.7	70.7	70.7	70.7	72.7	70.7	70.7	72.7	69.3	76.8	76.8
OVERALL HEIGHT (UNLOADED)	58.8	58.8	59.5	59.5	59.5	56.0	57.5	57.5	55.7	51.7 Roadster 51 Coupe	59.4	59.4
NUMBER OF CYLINDERS	4	4	6	6	6	6	6	6	6	6	8	8
FUEL SYSTEM	Downdraft Carburetor	Diesel Injection	Dual Downdraft Carburetors	Dual Compound Downdraft Carburetors	Manifold Fuel Injection	Manifold Fuel Injection	Manifold Fuel Injection	Manifold Fuel Injection	Manifold Fuel Injection	Port Fuel Injection	Manifold Fuel Injection	Manifold Fuel Injection

To continue its program of quality and design improvement, the manufacturer reserves the right to change specifications, designs or prices without notice and without incurring obligation. Information contained herein is from data available at time of printing.



**MERCEDES-BENZ
SALES INC.**

A Subsidiary of the Studebaker Corporation

SOUTH BEND 27, INDIANA

Printed In U.S.A.