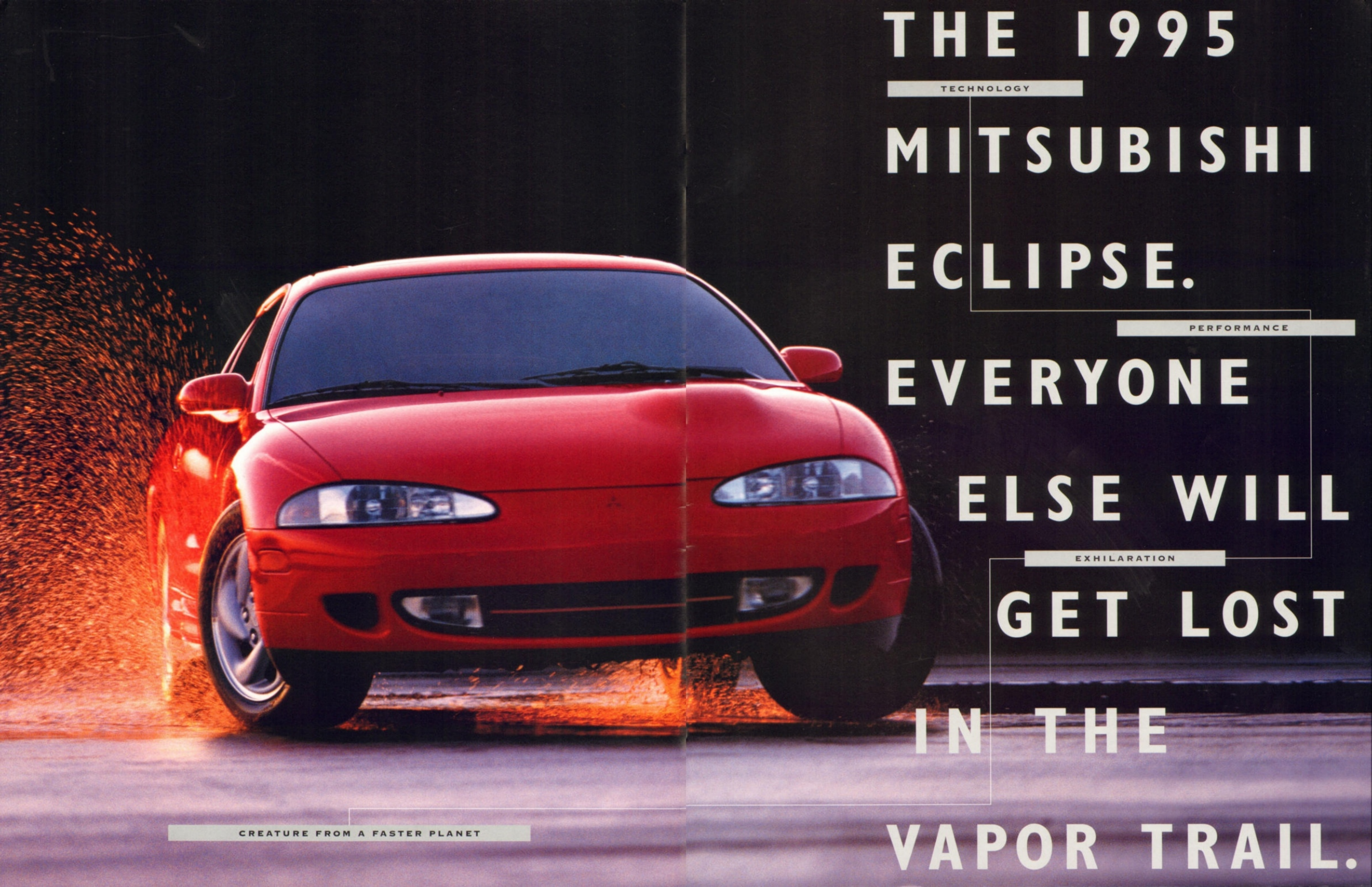


ECLIPSE

MITSUBISHI





THE 1995

TECHNOLOGY

MITSUBISHI
ECLIPSE.

PERFORMANCE

EVERYONE
ELSE WILL

EXHILARATION

GET LOST
IN THE

VAPOR TRAIL.

CREATURE FROM A FASTER PLANET



THE 210-HORSEPOWER ECLIPSE GSX



| | |
|-----------------------------|----------------------|
| Top speed | 140 mph |
| 0 - 60 mph acceleration | 6.4 sec. |
| 1/4 mile acceleration | 14.9 sec. @ 91.6 mph |
| 60 - 0 mph braking distance | 116 feet |
| Lateral acceleration | 0.86 g |

Eclipse GSX performance figures from *Motor Trend*, June 1994.
Top speed is manufacturer's estimate.

This is one of the cleanest, most aerodynamically advanced shapes in the automotive world. The new Mitsubishi Eclipse. A shape that is at once stunning to the eye, and nearly invisible to the atmosphere. Pure energy sculpted in high-tensile steel and flush-fitting glass.

Beneath the liquid contours of this new high-performance sports car is a purebred chassis perfected by hundreds of hours of CAD-CAM engineering. It's the very latest thinking in automotive architecture.

The chassis' magnetic relationship to the road is then amplified in the Eclipse GSX. With an act of technological diplomacy, the GSX full-time all-wheel-drive system continuously shifts the engine's enormous power to the tires with the greatest bite. Under any circumstance. On any road surface. The stability is startling.

The Eclipse is passionate technology, dedicated to the thrill of driving.

THE ALL-WHEEL-DRIVE ADVANTAGE

The tachometer redlines at 7000 rpm. The steering wheel and gear shifter are bound in leather. The instrument panel angles toward the driver and sweeps off into the doors. Aggressive seat bolsters hug your rib cage.

SAFETY

Inside the Eclipse GSX is an inventory of high-performance details and technical luxuries: seven-way adjustable driver's sport seat with power assist, dual air bags, turbo and oil pressure gauges, high-power Mitsubishi/Infinity® audio system, and leather trim.

STIMULATION

The atmosphere is serious. Sports-car serious.



140 MILE
ECLIPSE GSX
PER HOUR
THINK TANK.



THE 210-HORSEPOWER ECLIPSE GS-T

It's difficult to argue with 210 horses. Full multi-link suspension is nearly impossible to surpass. And 77 years of automotive experience demand respect. Together, this power, handling, and heritage define the Mitsubishi Eclipse turbos: Eclipse GS-T and all-wheel drive Eclipse GSX.

Framed in a completely new computer designed monocoque body and chassis, the turbocharged and intercooled power plant is used to its greatest advantage. At a class-dominating 210 horsepower

and 214 pound feet of torque, this computer-controlled, twin cam, 16-valve engine could easily overpower a more traditional sports coupe. Yet the Eclipse is intentionally engineered for high-strength performance.

To discipline the strength of the drivetrain and chassis, each 16-inch alloy wheel is managed by a network of steel control arms. Multi-link suspension takes you to a higher level of handling. By giving the speed-rated tires a superior angle

of attack on the pavement, the suspension firmly anchors each corner of the car. It's sharp, deliberate, sports-car control, without the rude and brittle ride.

Set into the radically tapered hood and bulging fenders of the Eclipse GS-T and Eclipse GSX are powertrain and suspension systems capable of producing nothing short of blinding performance. Power and road-holding abilities that will define the 21st-century sports car.



SUDDENLY, THE COMPETITORS

THE 140-HORSEPOWER ECLIPSE GS

Now, you really can tell a book by its cover. Though some sports coupes are just economy cars dressed to look fast, the Eclipse GS has a powerful new profile that's honestly athletic. A genuine sports car designed for performance.

Start with the engine: Twin cams, 16 valves and computerized control generate 140 horsepower. Significant power that's hard to surpass. Look beneath the fenders:

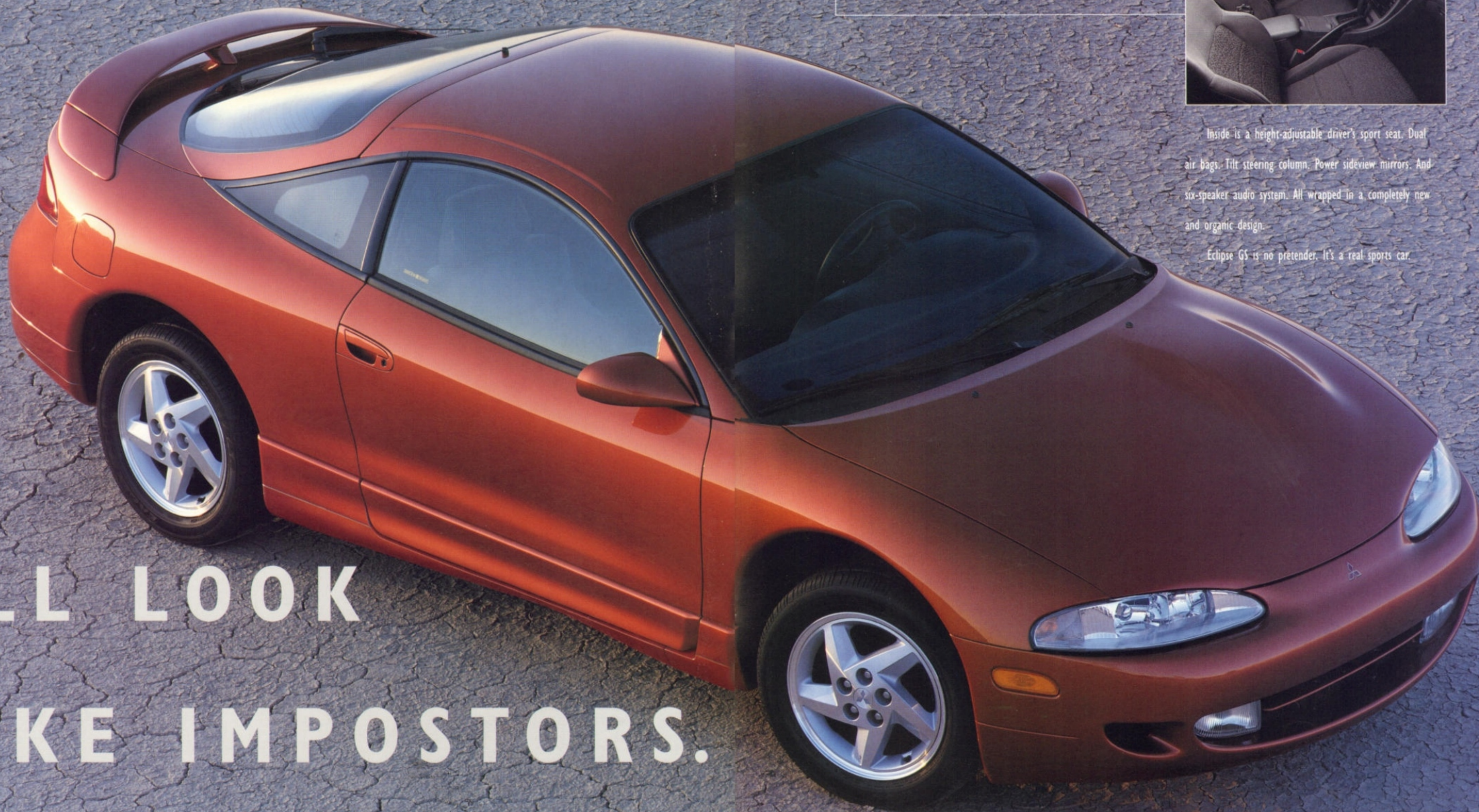
four-wheel disc brakes; substantial 16-inch wheels and tires; fully independent, four-wheel multi-link suspension with a strong front stabilizer bar. Eclipse GS is among the most technologically advanced in its class.

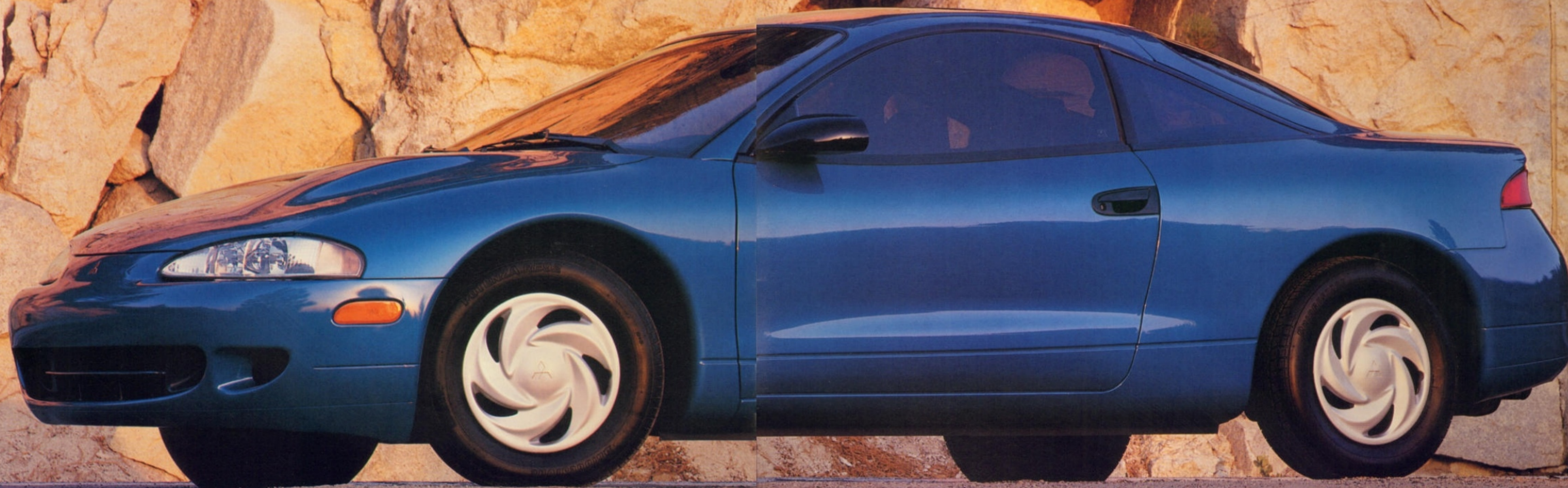


Inside is a height-adjustable driver's sport seat. Dual air bags. Tilt steering column. Power sideview mirrors. And six-speaker audio system. All wrapped in a completely new and organic design.

Eclipse GS is no pretender. It's a real sports car.

ALL LOOK LIKE IMPOSTORS.





This is an Eclipse you can tailor to your taste.

Begin with the essentials: A 140-horsepower, twin-

THE 140-HORSEPOWER ECLIPSE RS cam power

plant. A fully independent four-wheel multi-link suspension. Dual air bags. Height-adjustable driver's seat and steering column. And one of the most aerodynamic shapes you can buy in a sports car. Eclipse RS is loaded with potential.

Then choose from the options that will make it your own: alloy wheels, six-speaker stereo cassette, CD sound, power glass sunroof, air conditioning with CFC-free refrigerant, automatic transmission or anti-lock brakes. Factor in available accessories like a nose mask, security system or hatch-mounted rack for bikes and skis. This is a sports car with all the credentials.



AVAILABLE POWER GLASS SUNROOF



UPGRADED AUDIO SYSTEMS

ADVANCED AERODYNAMICS

1995 ECLIPSE

FEATURES

| | GSX | GS-T | GS | RS |
|---|----------------|----------------|----------------|-----------------|
| SAFETY FEATURES | | | | |
| All-wheel drive with center and rear limited slip differentials | S | NA | NA | NA |
| Driver and front passenger-side air bags* | S | S | S | S |
| Three-point ELR/ALR** seat belts for all passengers | S | S | S | S |
| Height-adjustable front shoulder belts | S | S | S | S |
| Four-wheel disc brakes | S | S | S | NA |
| Anti-lock braking system | O | O | O | O |
| Fog lamps | S | S | S | NA |
| 5-mph energy-absorbing bumpers | S | S | S | S |
| Side-guard door beams | S | S | S | S |
| Safety-cage body construction | S | S | S | S |
| Front and rear body structure crumple zones | S | S | S | S |
| EXTERIOR | | | | |
| Color-key full profile front air dam | S | S | S | S |
| Color-key rear spoiler | S | S | S | NA |
| Lower body cladding | S ¹ | S ¹ | S | NA |
| Tinted glass | S | S | S | S |
| Alloy wheels w/locks | S | S | O | O |
| Rear wiper/washer | S | S | O | NA |
| Diamond Coat™ paint protection | S | S | S | S |
| SEATING & TRIM | | | | |
| 7-way adjustable driver's sport seat with recline position memory | S | S | S | NA |
| 5-way adjustable driver's sport seat with recline position memory | NA | NA | NA | S |
| Cloth upholstery with contrasting seat inserts | NA | S | S | S |
| Leather upholstered front seating surfaces and power driver's seat | S | O | NA | NA |
| Split fold-down rear seat | S | S | S | S ² |
| Leather wrap steering wheel and manual transmission knob | S | O ³ | NA | NA |
| COMFORT & CONVENIENCE | | | | |
| Air conditioning with CFC-free refrigerant | S | S | O | O |
| Power windows and door locks with security logic | S | S | O | NA |
| Power sideview mirrors | S | S | S | NA ⁴ |
| Tilt steering column | S | S | S | S |
| Cruise control | S | S | O | NA |
| Courtesy lamps: dome lamp, cargo area, and map lamps | S | S | S | S |
| Center console with cup holders, storage areas, and armrest | S | S | S | S ⁵ |
| Full instrumentation: 170-mph speedometer, tachometer, fuel-level gauge, tripmeter, and coolant temperature gauge | S ⁶ | S ⁶ | S | S |
| Mitsubishi/Infinity® audio system: AM/FM stereo cassette, graphic equalizer, separate amplifier, 8 speakers, and CD auto-changer controls | S | S | O | NA |
| AM/FM stereo cassette, 6 speakers | NA | NA | S | O |
| AM/FM stereo, 4 speakers | NA | NA | NA | S |
| Single-disc CD player | NA | NA | O ⁷ | O ⁷ |
| Six-disc CD auto-changer | O ⁸ | O ⁸ | O ⁸ | NA |
| Power tilt and slide glass sunroof | O | O | O | O |
| Security system w/remote keyless entry | O | O | O | NA |

AUTHORIZED MITSUBISHI ACCESSORIES

Your Mitsubishi Motors Dealer offers a select choice of factory authorized accessories, including: nose mask, hatch-mounted bicycle and ski rack, car cover, remote keyless entry system, security system, floor mats, mudguards, wheel locks, air conditioning with CFC-free refrigerant, single-disc CD player, six-disc CD auto-changer, sunroof wind deflector, touch-up paint, and block heater.

ENVIRONMENTAL

In its design, construction, and development, the Eclipse reflects Mitsubishi's commitment to protecting and preserving the environment:

- Eclipse air conditioning uses CFC-free refrigerant, which is potentially less harmful to the ozone layer. Ozone-damaging CFCs have also been significantly reduced in the production of molded components.
- Plastic components weighing more than 3.5 ounces are coded for efficient recycling.
- Asbestos has been eliminated from engine gaskets and brake pads.

Some optional equipment may only be available as part of a package, or in combination with other optional equipment. See your Mitsubishi Motors Dealer for specific details. For the Mitsubishi Motors Dealer nearest you, call 1-800-ECLIPSE.

S = Standard O = Optional NA = Not Available
 *Designed to supplement the three-point shoulder/lap safety belts. **Driver's seat belt is ELR only. 1. Includes silver paint accent on GSX and GS-T models. 2. RS has one-piece seat back.
 3. Included with optional leather seating surfaces. 4. Manual remote sideview mirrors on RS model. 5. Open console on RS. 6. Includes turbo boost and oil pressure gauges.
 7. Only available with AM/FM cassette. 8. Only available with Mitsubishi/Infinity® audio system.

COLORS



NOTE: Logan Silver Metallic is available only as a lower-body accent color on Eclipse GSX and GS-T models. Kona Blue Pearl is not available on GSX and GS-T models.

SPECIFICATIONS

| | GSX/GS-T | GS/RS |
|----------------------------|---|---|
| ENGINE | | |
| Type | Turbocharged, intercooled, 2.0-liter inline 4-cylinder with Dual Engine Stabilizers™ | 2.0-liter inline 4-cylinder |
| Valvetrain | DOHC 16-valve | DOHC 16-valve |
| Fuel System | Electronically controlled multi-point fuel injection | Electronically controlled multi-point fuel injection |
| Horsepower @ RPM | 210 @ 6000 (205 @ 6000 w/auto trans.) | 140 @ 6000 |
| Torque (lbs.-ft.) @ RPM | 214 @ 3000 (220 @ 3000 w/auto trans.) | 130 @ 4800 |
| TRANSMISSION | | |
| Manual | 5-speed with overdrive | 5-speed with overdrive |
| Automatic (Optional) | Electronically controlled 4-speed with overdrive, Fuzzy Logic shift control and ELC-M™ engine/transmission control system | Electronically controlled 4-speed with overdrive |
| SUSPENSION | | |
| | Four-wheel independent multi-link with front and rear stabilizer bars and sport-tuned shock absorbers | Four-wheel independent multi-link with front stabilizer bar |
| STEERING | | |
| | Variable-assist power rack-and-pinion | Variable-assist power rack-and-pinion |
| BRAKES | | |
| | Power-assist four-wheel disc 2-piston front calipers (GSX) Available anti-lock brakes | Power-assist four-wheel disc (GS) Power-assist front disc/rear drum (RS) Available anti-lock brakes |
| WHEELS & TIRES | | |
| Wheel Size (in.)/Type | 16 x 6/Aluminum Alloy | 16 x 6 (GS) 14 x 5 (RS)/Steel w/full covers (std.) Aluminum Alloy (opt.) |
| Tire Size (mm.) | 215/55VR16(GSX M/T) 205/55VR16(GSX A/T) 205/55HR16(GS-T) | 205/55HR16(GS) 195/70HR14(RS) |
| DIMENSIONS | | |
| Exterior (in.) | | |
| Length | 172.2 | 172.2 |
| Width | 68.7 | 68.7(GS) 68.3(RS) |
| Height | 50.5(GSX) 49.8(GS-T) | 49.8 |
| Wheelbase | 98.8 | 98.8 |
| Track F/R | 59.6/59.4 | 59.6/59.4 |
| Interior (in.) | | |
| Head Room F/R | 37.9/34.1 | 37.9/34.1 |
| Leg Room F/R | 43.3/28.4 | 43.3/28.4 |
| CURB WEIGHT (LBS) | | |
| | 2877(GS-T w/M/T) | 2723(RS w/M/T) |
| CAPACITIES | | |
| Fuel (U.S. gal.) | 16.9 | 16.9 |
| Cargo Volume (cu. ft.) | 13.5(GSX) 16.6(GS-T) | 16.6 |
| Passenger Volume (cu. ft.) | 79.1 | 79.1 |
| DRAW COEFFICIENT | | |
| | 0.29 | 0.29 |

Performance figures obtained under test track conditions by professional drivers using special equipment and procedures. Mitsubishi does not advocate exceeding speed limits.
 Note: EPA figures not available at the time of this printing. See your Mitsubishi Motors Dealer for mileage figures. Technical data, features, options, and other equipment shown in this brochure are based on the latest information available at the time of printing and are subject to change without notice. Some vehicles are shown with optional equipment. For further information on options and accessories, contact your Mitsubishi Motors Dealer. Availability of vehicles with specific features may vary. Headlights, parking lights, fog lamps, and instrument panel lights on vehicles lighted for illustration purposes only. Part #MMSA-ADV-5618. Litho in USA. ©1994 Mitsubishi Motor Sales of America, Inc.

THE MITSUBISHI WARRANTY

Mitsubishi's confidence in the quality of the 1995 Eclipse is reflected by the following comprehensive warranties:

- Three-year/36,000-mile New Vehicle Limited Warranty
- Five-year/60,000-mile Powertrain Limited Warranty
- Seven-year/100,000-mile Anti-Corrosion/Perforation Limited Warranty.

DIAMOND CARESM

Diamond Care ensures that your new Eclipse is thoroughly prepared, inspected, and explained prior to delivery. After delivery, a toll-free number brings 24-hour road service. For the first 36 months, or 36,000 miles, free towing will be provided to the nearest Mitsubishi Motors Dealer for a warrantable repair. And after the first 1,000 miles of ownership, you are invited back for a free vehicle inspection.

EXTENDED SERVICE

Mitsubishi offers an extended service contract to extend your comprehensive service coverage for up to six years or 100,000 miles. Ask your Mitsubishi Motors Dealer for details.

LEASE PLANS

Mitsubishi Motors offers a wide range of affordable leasing programs designed to meet your needs. Please ask your Mitsubishi Motors Dealer for specific details.

1-800-ECLIPSE

BUCKLE-UP FOR SAFETY

TRIPLE DIAMOND PROTECTION PORTFOLIOTM



MITSUBISHI
The New Thinking in AutomobilesTM