

1 9 9 7

# CELICA

P r o d u c t S o u r c e

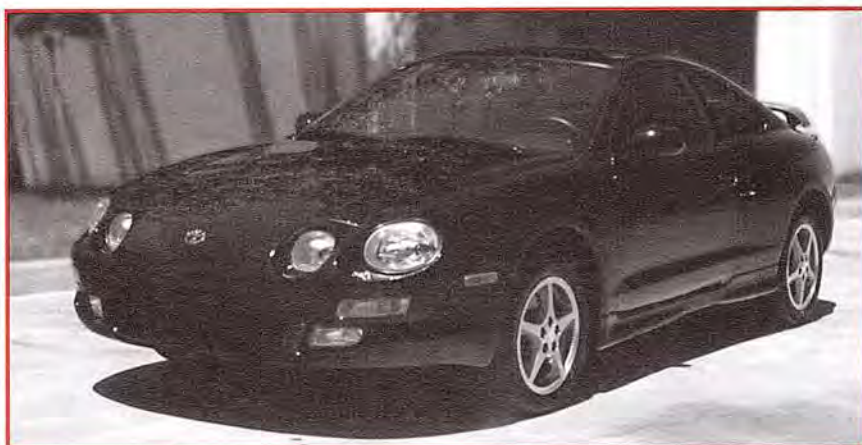
 **TOYOTA**



## Table of Contents

Model Line-Up .....	2
Standard Features .....	3
Standard/Optional Features .....	6
Specifications.....	9
Features and Benefits.....	10
Safety .....	10
Performance.....	12
Comfort and Convenience .....	14
Styling.....	16
Quality/Dependability/Reliability and Value .....	18
Glossary .....	20

# Model Line-Up



## New for 1997

### All Models

- New exterior colors
  - Fiesta Blue Metallic (933)
- Deleted Exterior Colors
  - Bright Iris Pearl (8K9)
  - Deleted in 1997<sup>1/2</sup>, Topaz Metallic (1A2)
  - Deleted in 1997<sup>1/2</sup>, Bright Turquoise Pearl (756)

## Body Styles and Trim Levels

Body Style	Trim Level	Trans.	Displacement	Cyl.	bhp	Model #
2-Door Sport Coupe	ST	5M	1.8 liter	4	105	2165
	ST	4ECT	1.8 liter	4	105	2162
3-Door Liftback	ST	5M	1.8 liter	4	105	2167
	ST	4ECT	1.8 liter	4	105	2166
	GT	5M	2.2 liter	4	135 <sup>1</sup>	2195
	GT	4ECT	2.2 liter	4	135 <sup>1</sup>	2192
Convertible	GT	5M	2.2 liter	4	135 <sup>1</sup>	2183
	GT	4ECT	2.2 liter	4	135 <sup>1</sup>	2184

<sup>1</sup> 130 on cars equipped with California emissions



# Standard Features

## Celica ST Sport Coupe

### Mechanical

- 1.8-liter 4-cylinder DOHC\* 16-valve EFI engine
- 2-piece oil pan
- Fluid-filled engine mount (1)
- 5-speed manual overdrive transmission
- 4-wheel independent MacPherson strut suspension with rear dual links
- Front and rear stabilizer bars
- Front and rear subframes (engine/suspension)
- Power-assisted variable-assist rack-and-pinion steering
- Power-assisted ventilated front disc/rear drum brakes
- P185/70R14 All-season steel belted radials
- Temporary spare tire
- Vibration-damping steel (bulkhead and rear wheel wells)
- Aerodynamic underbody belly pan
- All-Weather Guard Equipment Package

### Exterior

- Unique aero-style halogen headlamps with auto-off feature
- Color-keyed bumpers and door handles
- Flush-mounted green tinted safety glass
- Dual color-keyed breakaway power mirrors
- ST full wheel covers
- Window-mounted Center High-Mount Stop Lamp (CHMSL)
- Fuel lid (with cap holder)
- Emblems (front and rear): Toyota
- Emblem (rear): Celica

### Interior

- 4-way adjustable front seats (slide, recline, seat cushion and head restraint height)
- 50/50 split-folding rear seat with security lock
- Rear-passenger entry/exit device
- ST cloth seat trim
- Dual door map pockets
- Door courtesy lamp reflectors
- Lockable glove box
- Instrument panel storage compartment (under radio)
- Full center console with padded cover

\* Marketed as Twin-Cam

\*\* See "Safety" section beginning on page 10 for additional information



*Model shown may have optional equipment*

- Dual cup holder
- Dual sun visor vanity mirrors
- Rear coat hooks (2)
- Driver-side footrest
- Cut-pile carpeting
- Trunk mat
- Instrumentation: electronic analog speedometer, tripmeter, odometer, tachometer, coolant temperature and fuel level gauges
- Warning lights: air bag, door ajar, seatbelt disconnect, oil pressure, check engine, battery, low fuel level and key-in-ignition buzzer
- Tilt steering wheel (4-spoke)
- Variable intermittent windshield wipers
- Front-, side- and rear-window defoggers
- Digital quartz clock
- Lights: dome, map, ashtray and trunk
- Remote hood, fuel lid and trunk releases
- Valet trunk locking system
- Rear ashtray
- Rear quarter panel-mounted retractable antenna
- Deluxe AM/FM ETR Radio with 4 speakers

### Safety\*\*

- Driver- and passenger-side air bags (SRS)
- Seatbelts
  - Driver: 3-point with ELR
  - Outboard passengers: 3-point with ELR/ALR
- Energy-absorbing steering wheel and column
- Side-door beams

# Standard Features

## Celica ST Sport Coupe (Cont'd)

### Liftback adds:

- Deck lid-mounted Center High-Mount Stop Lamp (CHMSL)
- Cargo cover

## Celica GT Liftback Differences vs Celica ST Liftback

### Mechanical

- 2.2-liter 4-cylinder DOHC\* 16-valve EFI engine
- Larger battery, starter, clutch and temporary spare tire
- Engine oil cooler (5M only)
- Engine stiffener plate (connects engine/transmission)
- Front suspension brace
- Power-assisted 4-wheel disc brakes (front ventilated/rear solid)
- P205/55R15 All-season steel belted radial tires

### Exterior

- Front fog lamps
- GT full wheel covers
- Stainless steel-tipped exhaust pipe
- GT badging



*Model shown may have optional equipment*

### Interior

- GT cloth seat and door trim
- Door courtesy lamps
- Center console storage area (next to cigarette lighter)
- Power windows and door locks
  - One-touch driver-side auto-down
  - Two-turn locks
  - Anti-lock-out feature
  - Nighttime illumination
- Rear intermittent wiper
- Heavy duty rear-window defogger with timer
- Illuminated ignition key ring
- Power antenna
- Deluxe AM/FM ETR/Cassette with 4 speakers
- Power Package

\* Marketed as Twin-Cam



# **S**tandard Features

## **Celica GT Convertible** Differences vs Celica GT Liftback

### **Mechanical**

- Electro-mechanical power top

### **Exterior**

- Black cloth top with rear glass window and defogger
- Reinforced rocker panel and other structural areas
- Deck lid-mounted LED Center High-Mount Stop Lamp (CHMSL)

### **Interior**

- Power rear quarter windows



*Model shown may have optional equipment*

# Standard/Optional Features

## Mechanical

	ST SPORT COUPE	ST LIFT- BACK	GT LIFT- BACK	GT CONVERT- IBLE
• California emissions {CA}	.O	.O	.O	.O
• 48-state emissions {RE}	.O	.O	.O	.O
• 1.8-liter 4-cylinder DOHC* 16-valve EFI engine	.S	.S	.NA	.NA
• 2.2-liter 4-cylinder DOHC* 16-valve EFI engine	.NA	.NA	.S	.S
-Larger battery, starter and clutch	.NA	.NA	.S	.S
-Engine oil cooler	.NA	.NA	.S <sup>1</sup>	.S <sup>1</sup>
-2-piece oil pan	.S	.S	.NA	.NA
-Engine stiffener plate	.NA	.NA	.S	.S
-Engine block heater	.A <sup>2</sup>	.A <sup>2</sup>	.A <sup>2</sup>	.A <sup>2</sup>
-Fluid-filled engine mount (1)	.S	.S	.S	.S
• 5-speed manual overdrive transmission	.S	.S	.S	.S
• 4-speed electronically controlled automatic overdrive transmission (4ECT)	.O	.O	.O	.O
• 4-wheel independent MacPherson strut suspension with rear dual links	.S	.S	.S	.S
• Sport-tuned suspension	.NA	.NA	.O <sup>3</sup>	.NA
• Front and rear stabilizer bars	.S	.S	.S	.S
• Front and rear subframes (engine/suspension)	.S	.S	.S	.S
• Front suspension brace	.NA	.NA	.S	.S
• Power-assisted variable-assist rack-and-pinion steering	.S	.S	.S	.S
• Power-assisted ventilated front disc/rear drum brakes	.S	.S	.NA	.NA
• Power-assisted 4-wheel disc brakes (front ventilated/rear solid)	.NA	.NA	.S	.S
• Anti-lock Brake System (ABS) {AB}	.O <sup>4</sup>	.O <sup>4</sup>	.O <sup>4</sup>	.O <sup>4</sup>
• P185/70R14 All-season steel belted radial tires	.S	.S	.NA	.NA
• P205/55R15 All-season steel belted radial tires	.O	.O	.S	.S
• Temporary spare tire	.S	.S	.S	.S
• Vibration-damping steel in bulkhead and rear wheel wells	.S	.S	.S	.S
• Aerodynamic underbody belly pan	.S	.S	.S	.S
• Electro-mechanical power top	.NA	.NA	.NA	.S
• All-Weather Guard Equipment Package {CK}	.S	.S	.S	.S
• Sport Packages {SX}/{SL}	.NA	.NA	.O <sup>5</sup>	.NA

## Exterior

• Unique aero-style halogen headlamps with auto-off feature	.S	.S	.S	.S
• Front fog lights {LF}	.O	.O	.S	.S
• Front-end mask {KM}	.A <sup>2</sup>	.A <sup>2</sup>	.A <sup>2</sup>	.A <sup>2</sup>
• Color-keyed bumpers and door handles	.S	.S	.S	.S
• Flush-mounted green tinted safety glass	.S	.S	.S	.S
• Dual color-keyed breakaway power mirrors	.S	.S	.S	.S
• Black cloth top with rear glass window and defogger	.NA	.NA	.NA	.S
• ST full wheel covers	.S	.S	.NA	.NA
• GT full wheel covers	.NA	.NA	.S	.S
• Aluminum alloy wheels {AW}	.O	.O	.O	.O
• Aluminum alloy wheels {SS}	.A	.A	.NA	.NA
• Wheel locks (alloy) {WL}	.A <sup>6</sup>	.A <sup>6</sup>	.A <sup>6</sup>	.A <sup>6</sup>
• Wheel locks (steel) {WS}	.A	.A	.A	.A
• Reinforced rocker panel and other structural areas	.NA	.NA	.NA	.S
• Color-keyed contoured rocker panels {RP}	.O	.O	.O	.NA
• Mudguards {MF}	.A	.A	.A	.NA
• Window-mounted Center High-Mount Stop Lamp (CHMSL)	.S	.NA	.NA	.NA
• Deck lid-mounted Center High-Mount Stop Lamp (CHMSL)	.NA	.S	.S	.NA
• Deck lid-mounted LED Center High-Mount Stop Lamp (CHMSL)	.NA	.NA	.NA	.S
• Fuel lid (with cap holder)	.S	.S	.S	.S
• Rear spoiler {RF}	.A	.O <sup>7</sup>	.O	.NA
• Stainless steel-tipped exhaust pipe	.NA	.NA	.S	.S
• Emblems (front and rear): Toyota	.S	.S	.S	.S
• Emblem (rear): Celica	.S	.S	.S	.S
• GT badging	.NA	.NA	.S	.S
• Gold Appearance Package {GP}	.A	.A	.A	.A

### Legend

S	Standard
O	Optional
A	Dealer/Port-Installed
NA	Not Available
{ }	Option Code

### Notes:

{CK}	Includes heavy-duty: starter, battery, windshield washer tank and rear-window defogger
{SX}	Includes sport suspension, alloy wheels, performance tires, fabric sport seats with fore/aft headrest adjustment, leather-wrapped steering wheel and shift knob (5M)
{SL}	Includes sport suspension, alloy wheels, performance tires, leather-trimmed sport seats with fore/aft headrest adjustment, leather-trimmed seats and doors, leather-wrapped steering wheel and shift knob (5M)
{AW}	Includes aluminum alloy wheels (4) and All-season steel belted radials
*	Marketed as Twin-Cam
1	5M only
2	D1O only
3	Included in Sport Packages {SX} and {SL}
4	Includes larger temporary spare tire and requires {CL}
5	Requires Cruise control {CL}
6	Requires Aluminum alloy wheels Package {AW}
7	Requires Rear intermittent wiper {RW}



# Standard/Optional Features

## Interior

	ST SPORT COUPE	ST LIFT- BACK	GT LIFT- BACK	GT CONVERT- IBLE
• 4-way adjustable front seats (slide, recline, seat cushion and head restraint height)	.S	.S	.S	.S
• 4-way adjustable front sport seats (slide, recline, seat cushion and head restraint height)	.NA	.NA	.O <sup>3</sup>	.NA
• 50/50 split-folding rear seat with security lock	.S	.S	.S	.S
• Rear-passenger entry/exit device	.S	.S	.S	.S
• ST cloth seat trim	.S	.S	.NA	.NA
• GT cloth seat and door trim	.NA	.NA	.S	.S
• Sport cloth seat trim	.NA	.NA	.O <sup>8</sup>	.NA
• Leather-trimmed seat	.NA	.NA	.O <sup>9</sup>	.O <sup>9</sup>
• Wood dash {DU}	.A	.A	.A	.A
• Center armrest {CV}	.A	.A	.A	.A
• Dual door map pockets	.S	.S	.S	.S
• Door courtesy lamp reflectors	.S	.S	.NA	.NA
• Door courtesy lamps	.NA	.NA	.S	.S
• Leather-wrapped steering wheel	.O	.O	.O <sup>9</sup>	.O <sup>9</sup>
• Lockable glove box	.S	.S	.S	.S
• Instrument panel storage compartment (under radio)	.S	.S	.S	.S
• Center console storage area (next to cigarette lighter)	.NA	.NA	.S	.S
• Full center console with padded cover	.S	.S	.S	.S
• Dual cup holder	.S	.S	.S	.S
• Dual sun visor vanity mirrors	.S	.S	.S	.S
• Rear coat hooks (2)	.S	.S	.S	.NA
• Driver-side footrest	.S	.S	.S	.S
• Cargo cover	.NA	.S	.S	.NA
• Cargo net {GN}	.NA	.A	.A	.NA
• Carpeted floor mats, 4-piece set {CF}	.A	.A	.A	.A
• Floor mats (universal)	.A	.A	.A	.A
• Cut-pile carpeting	.S	.S	.S	.S
• Trunk mat	.S	.S	.S	.S
• Instrumentation: electronic analog speedometer, tripmeter, odometer, tachometer, coolant temperature and fuel level gauges	.S	.S	.S	.S
• Warning lights: air bag, door ajar, seatbelt disconnect, oil pressure, check engine, battery, low fuel level and key-in-ignition buzzer	.S	.S	.S	.S
• Power tilt/slide glass moonroof {SR}	.O <sup>10</sup>	.O <sup>10</sup>	.O <sup>10</sup>	.NA
• Moonroof wind deflector {SD}	.A	.A	.A	.NA
• Air conditioning (CFC-free) {AC}	.O/A	.O/A	.O/A	.O/A
• Cellular mobile telephones (fixed/portable)	.A <sup>2</sup>	.A <sup>2</sup>	.A <sup>2</sup>	.A <sup>2</sup>
• Toyota Vehicle Intrusion Protection (V.I.P.) {V3}	.A	.A	.A	.NA
• Keyless Entry {KE}	.A	.A	.A	.A
• Power windows and door locks	.O <sup>11</sup>	.O <sup>11</sup>	.S <sup>11</sup>	.S <sup>11</sup>
• Power rear quarter windows	.NA	.NA	.NA	.S
• Cruise control	.O	.O	.O	.O
• Tilt steering wheel (4-spoke) {TW}	.S	.S	.S	.S
• Variable intermittent windshield wipers	.S	.S	.S	.S
• Rear intermittent wiper {RW}	.O	.O	.S	.NA
• Front-, side- and rear-window defoggers	.S	.S	.S	.S
• Heavy-duty rear-window defogger (with timer on GT)	.S <sup>12</sup>	.S <sup>12</sup>	.S <sup>12</sup>	.S <sup>12</sup>
• Digital quartz clock	.S	.S	.S	.S
• Lights: dome, map, ashtray and trunk	.S	.S	.S	.S
• Illuminated ignition key ring	.NA	.NA	.S	.S
• Remote hood, fuel lid and trunk releases	.S	.S	.S	.S
• Valet trunk locking system	.S	.S	.S	.S
• Rear ashtray	.S	.S	.S	.S
• Rear quarter panel-mounted retractable antenna	.S	.S	.NA	.NA
• Power antenna	.NA	.NA	.S <sup>13</sup>	.S <sup>13</sup>

### Legend

S Standard  
O Optional  
A Dealer/Port-  
Installed  
NA Not Available  
( ) Option Code

### Notes:

2 DIO only  
3 Included in Sport Packages {SX} and {SL}  
8 Included in Sport Package {SX}  
9 Included in Leather-trim Package {LA} or Sport Package {SL}  
10 Includes sliding sunshade

11 Includes one-touch driver-side auto down, two-turn locks, anti-lock-out feature and nighttime illumination  
12 Included in All-Weather Guard Equipment Package {CK}  
13 Included in {EX} audio system

# S

## Standard/Optional Features

### Interior (Cont'd)

	ST SPORT COUPE	ST LIFT- BACK	GT LIFT- BACK	GT CONVERT- IBLE
• Deluxe AM/FM ETR Radio with 4 speakers	.S <sup>14</sup>	.S <sup>14</sup>	.NA	.NA
• Deluxe AM/FM ETR/Cassette with 4 speakers {EX}	.O	.O	.S	.S
• Premium AM/FM ETR/Cassette with 6 speakers {CE}	.NA	.NA	.O	.O <sup>15</sup>
• Premium 3-in-1 ETR/Cassette/CD Changer with 8 speakers {DC}	.NA	.NA	.O	.O <sup>15</sup>
• Auto-Reverse Cassette Deck with Dolby® <sup>16</sup> {P4}	.A	.A	.NA	.NA
• Compact Disc Deck {P5}	.A	.A	.A <sup>17</sup>	.A <sup>17</sup>
• 3-Disc CD {P3}	.A	.A	.A <sup>17</sup>	.A <sup>17</sup>
• 6-Disc CD Changer {P9}	.A	.A	.A <sup>17</sup>	.A <sup>17</sup>
• Leather-trim Package {LA}	.NA	.NA	.NA	.O <sup>5</sup>
• Power Package {PO}	.O	.O	.S	.S

### Safety\*

• Driver- and passenger-side air bags Supplemental Restraint System (SRS)	.S	.S	.S	.S
• Seatbelt, driver: 3-point with ELR <sup>18</sup>	.S	.S	.S	.S
• Outboard passengers: 3-point with ELR/ALR <sup>19</sup>	.S	.S	.S	.S
• Energy-absorbing steering wheel and column	.S	.S	.S	.S
• Side-door beams	.S	.S	.S	.S

#### Legend

S	Standard
O	Optional
A	Dealer/Port- Installed
NA	Not Available
{ }	Option Code

#### Notes:

{EX}	Manual antenna on ST; power antenna on GT
{CE}	Includes FM diversity antenna system
{DC}	Includes programmable equalizer and FM diversity antenna system
{LA}	Includes leather-faced seats, steering wheel, 5M shift knob and synthetic leather door trim
{PO}	Includes power windows and door locks with one-touch driver-side auto down, two-turn locks, anti-lock-out feature and nighttime illumination

\* See "Safety" section beginning on page 10 for additional information

5 Requires Cruise control {CL}

14 Includes manual antenna

15 Does not include FM diversity antenna

16 Dolby® is a registered trademark of Dolby Laboratories, Inc.

17 Not available with {DC} audio system

18 Emergency Locking Retractor (ELR)

19 Emergency Locking Retractor (ELR)/Automatic Locking Retractor (ALR)



# Specifications

## Mechanical

		ST COUPE / LIFTBACK	GT LIFTBACK / CONVERTIBLE
<b>ENGINE</b>			
Type		1.8-L 4-Cyl <sup>1</sup> DOHC* 16-V EFI	2.2-L 4-Cyl <sup>1</sup> DOHC* 16-V EFI
Horsepower (bhp @ rpm)		105 @ 5200	135 <sup>2</sup> @ 5400
Torque (lb-ft @ rpm)		117 @ 2800	145 @ 4400
Bore x Stroke (in.)		3.19 x 3.37	3.43 x 3.58
Compression Ratio		9.5:1	9.5:1
MPG (EPA est. city/hwy)		5M - 29/35	5M - 22/28
Power-to-Weight Ratio		5M - 21.8:1 / 21.9:1	5M - 19.1:1 / 20.4:1
		4ECT - 27/34	4ECT - 22/29
		4ECT - 22.5:1 / 22.7:1	(19.8:1 / 21.2:1 - CA)
			4ECT - 20.0:1 / 20.9:1
			(20.3:1 / 21.7:1 - CA)
<b>DRIVETRAIN</b>			
Type		Front-wheel drive	Front-wheel drive
Transmissions	-standard -optional	5-speed manual overdrive 4-speed ECT auto overdrive	5-speed manual overdrive 4-speed ECT auto overdrive
Differential Ratio		5M - 4.058:1	5M - 4.176:1
		4ECT - 2.821:1	4ECT - 4.176:1
<b>SUSPENSION</b>			
Type		4-wheel independent MacPherson strut (dual link at the rear) with offset coil springs; low pressure gas-filled shock absorbers with ball-joint stabilizer bars and subframes	4-wheel independent MacPherson strut (dual link at the rear) with offset coil springs; low pressure gas-filled shock absorbers with ball-joint stabilizer bars and subframes
<b>STEERING</b>			
Type		Variable-assist power rack-and-pinion	Variable-assist power rack-and-pinion
Steering Ratio		17.2:1	17.2:1
Turning Diameter** (ft)		34.2	34.2
Turns***		2.9	2.9
<b>BRAKES<sup>†</sup></b>			
Front/Rear	-standard -optional	Ventilated disc/drum Anti-lock Brake System (ABS)	4-wheel disc (front ventilated/rear solid) Anti-lock Brake System (ABS)
<b>WHEELS</b>			
Type/Size	-standard -optional	Steel / 6.0 x 14 Alloy / 7.0 x 15	Steel / 6.5 x 15 Alloy / 7.0 x 15
<b>TIRES</b>			
Type		All-season steel belted radial	All-season steel belted radial
Size		P185/70R14	P205/55R15
Spare		Temporary	Temporary
<b>CAPACITIES</b>			
Curb Weights (lbs.)		5M - 2395 / 2415	5M - 2580 / 2755
Fuel Tank (gals.)		15.9	15.9
Towing** (lbs.)		2000	2000

## Exterior

Wheelbase (in.)		99.9	99.9
Overall Length (in.)		177.0 / 174.2	174.2 / 177.0
Overall Width (in.)		68.9	68.9
Overall Height (in.)		51.0 / 50.8	50.8 / 51.0
Tread Width		59.6/58.9	59.6/58.9
Drag Coefficient (Cd)	-front/rear (in.)	.32 <sup>3</sup>	.32 <sup>3</sup> / —

## Interior

Seating Capacity		4	4
Head Room	-front/rear (in.)	34.3/29.2 / 34.3/29.2	34.5/30.7 / 38.7/34.1
Leg Room	-front/rear (in.)	43.1/26.6	43.1/26.6 / —
Shoulder Room	-front/rear (in.)	52.4/49.9	52.4/49.9 / 52.4/44.8
Hip Room	-front/rear (in.)	52.8/47.8	52.8/47.8 / 52.8/41.2
Trunk/Cargo	-seat up (cu. ft.)	10.6 / 16.2	16.2 / 6.8

## Safety†††

### OCCUPANT RESTRAINT SYSTEMS

Air Bag (SRS)		Driver- and passenger-side	Driver- and passenger-side
Seatbelts	-driver -outboard passengers	3-point with ELR <sup>4</sup> 3-point with ELR/ALR <sup>5</sup>	3-point with ELR <sup>4</sup> 3-point with ELR/ALR <sup>5</sup>

#### Notes:

NA	Feature not available	††	Requires additional equipment. Consult the 1997 Toyota Trailer Towing Guide for details and GCWR limits
—	Information not available	†††	See "Safety" section beginning on page 10 for additional information
*	Marketed as Twin-Cam		
**	Curb-to-curb		
***	Lock-to-lock		
†	Power-Assisted		

1	Cast iron engine block with aluminum alloy head
2	130 on cars equipped with California emissions
3	.33 with spoiler on liftback
4	Emergency Locking Retractor (ELR)
5	Emergency Locking Retractor (ELR) / Automatic Locking Retractor (ALR)



# Features and Benefits

## Safety



### KEY FEATURES

Dual Air Bags  
Supplemental  
Restraint System  
(SRS)\*

Crumple Zones

Side-Door Beams

Optional 4-Wheel  
Anti-lock Brake  
System (ABS)

Ventilated Front  
Disc Brakes

### BENEFITS

**Help limit the motion of the head and upper body in the event of a severe frontal collision.**

**Help absorb the impact of a front or rear collision.**

**Help provide some protection if the Celica is hit from the side.**

**Pulsates brakes to help avoid skids caused by lock-up during panic stops.**

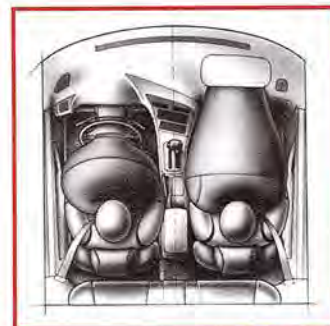
**Help reduce brake fading and rotor warping by allowing cooling air to pass through the vents in the hot discs.**

## Impact Protection

### Dual Air Bags Supplemental Restraint System (SRS)\*

In a severe frontal collision, sensors (located in the floor tunnel) **detect the force of the impact and cause the bags to inflate** within milliseconds (after it begins to happen)

**helping to limit the motion of the head and upper body.** Safety belts must be worn at all times for maximum protection. Air bags won't inflate in minor frontal impacts or other types of accidents.

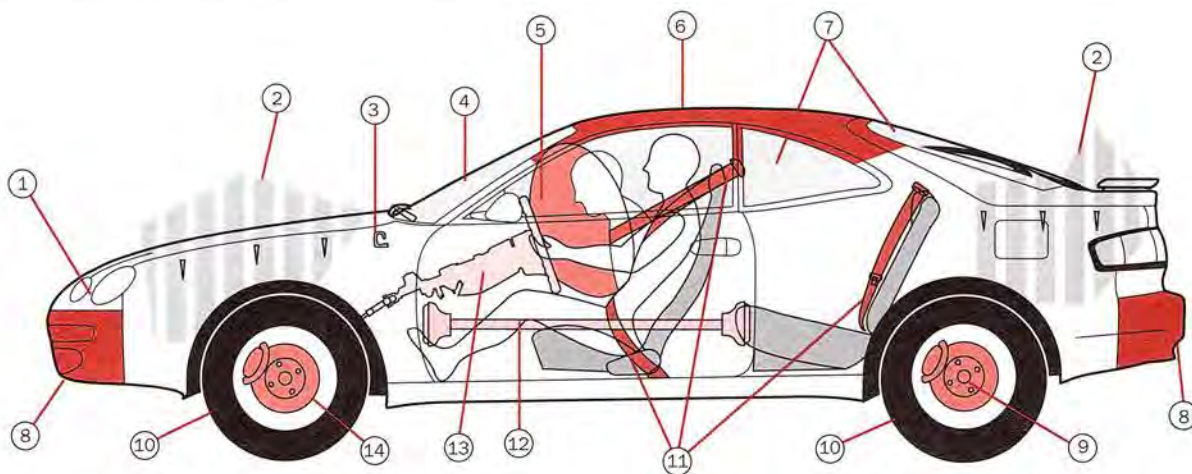


Dual air bags (SRS) are standard in all Celicas

### Crumple Zones

Protective features at the front and rear of the Celica **help absorb the impact of a collision.** These pre-stressed areas in the fenders, hood, and related body components are **designed to crush and absorb energy during an impact.** As the area successively crushes in a collision, crash energy is dissipated, which **prevents much of the collision energy from reaching the passenger compartment.**

- |                            |   |
|----------------------------|---|
| 1 Halogen headlamps        | 9 Disc brakes/ABS**                           |
| 2 Crumple zones            | 10 Steel belted radials                       |
| 3 Hood hold-down hooks     | 11 3-point seatbelts                          |
| 4 Laminated safety glass   | 12 Side-door beams                            |
| 5 Dual air bags (SRS)*     | 13 Energy-absorbing steering wheel and column |
| 6 Reinforced roof          | 14 Ventilated disc brakes/ABS**               |
| 7 Tempered safety glass    |   |
| 8 Impact-absorbing bumpers |   |



\* The Toyota driver and front passenger air bags are a Supplemental Restraint System (SRS) designed to inflate in a severe frontal collision. In all other accidents, the air bags will not inflate. To minimize the risk of severe injury in all types of crashes, all occupants must always wear seatbelts. Do not sit or place objects close to an air bag. Do not use rearward-facing child seats in any front passenger seat. The force of a deploying air bag SRS may cause serious injury. Please see the Owner's Manual for instructions on SRS and child seat usage.

\*\* Rear drum brakes on ST models. ABS is optional on all Celicas. See Specifications, page 9.



# Features and Benefits



## Side-Door Beams

Steel beams located under the sheet metal in Celica's doors **help provide some protection if the Celica is hit from the side.** Additionally, a center pillar reinforcement helps absorb the shock of a side impact.

## 3-Point ELR/ALR Safety Belts<sup>1</sup>

The **ELR** (Emergency Locking Retractor) **allows the belts to extend or retract with occupant movement,** yet locks them during a sudden stop or upon impact. The **ALR** (Automatic Locking Retractor) **allows a child seat to be secured without using a seatbelt locking clip. Do not use a rearward-facing child seat in the front passenger seat. See Owner's Manual for child seat usage.**

## Hood Hold-Down Hooks

Two hooks at the back end of the hood (near the cowl) **help keep the hood in place during a frontal collision.** They are designed to **help keep the hood from being pushed rearward into the passenger compartment,** helping protect the occupants.

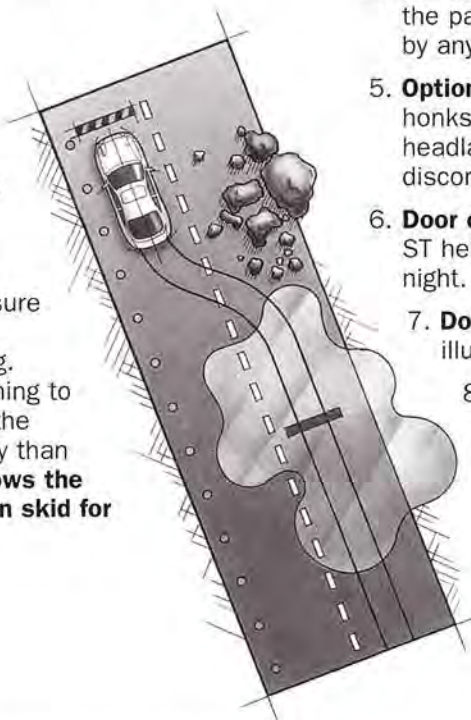
## Front Seat Design

The steel frames of the front seat are designed to **help absorb impact energy during an accident,** which helps protect the occupants. In addition, seatbelt buckles are attached directly to the seats to provide **more comfort and convenience.**

## Accident Avoidance

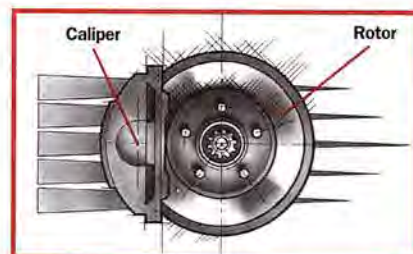
### Optional 4-Wheel Anti-lock Brake System (ABS)

ABS is a sophisticated computer-controlled system that regulates braking pressure to help **avoid wheel lock-up** during heavy braking. When the wheels are beginning to lock, the computer causes the brakes to pulse more rapidly than humanly possible. **This allows the wheels to rotate rather than skid for better stopping control.**



## Ventilated Front Disc Brakes<sup>2</sup>

Vents in the brake discs (or rotors) allow cooling air to pass through the hot discs. This **helps reduce heat build-up to maintain stopping power,** and helps lessen the chance of the brakes fading, glazing or warping.



## Personal Security

The following standard or optional features provide customers with a "safe" feeling every time they enter and use their Celica:

1. **Low fuel level warning light** indicates the need to refill the fuel tank.
2. **Two-turn power door locks<sup>3</sup>** provide an extra level of security by opening the driver's door only when the key is inserted and turned once. A second turn unlocks the passenger door.
3. **Anti-lock-out power door locks<sup>3</sup>** prevent the door from being locked if the key is in the ignition.
4. **Passenger window lock-out system** disables the passenger window from being operated by anyone except the driver.
5. **Optional Vehicle Intrusion Protection (V.I.P.)** honks the horn and flashes the headlamps and taillamps. It also disconnects the starter in case of break-in.
6. **Door courtesy lamp reflectors** on the Celica ST help other drivers see open doors at night.
7. **Door courtesy lamps** on Celica GT illuminate entry at night.
8. **Auto-off headlamps** help eliminate run-down battery worries.

<sup>1</sup> Driver-side has ELR. Outboard passenger seats have ELR and ALR

<sup>2</sup> Celica ST has ventilated front disc brakes with rear drums. Celica GT has ventilated front disc brakes with solid discs at the rear

<sup>3</sup> Standard feature on Celica GT, optional on ST



# Features and Benefits

## Performance



### KEY FEATURES

Economical 1.8-L  
4-Cylinder DOHC\*  
16-Valve EFI Engine

More Powerful 2.2-L  
4-Cylinder DOHC\*  
16-Valve EFI Engine

Optional 4-Speed  
Electronically  
Controlled Automatic  
Overdrive  
Transmission (4ECT)

Power-Assisted  
Variable-Assist  
Rack-and-Pinion  
Steering

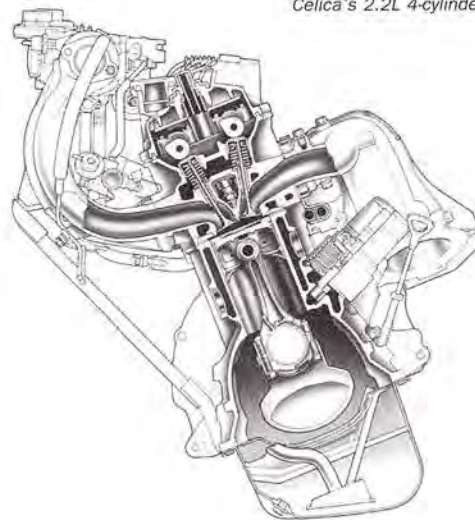
### BENEFITS

This Celica engine develops 105 HP and 117 lb-ft of torque while providing an EPA highway mileage estimate of 35 mpg\*\* with 5-speed manual transmission.

This Celica engine develops 135 HP<sup>1</sup> and 145 lb-ft of torque while providing an EPA highway mileage estimate of 28 mpg\*\* with a 5-speed manual transmission.

This transmission has a computer which selects gears based on driver input and driving conditions to help produce more seamless shifts.

Provides extra assist during low-speed maneuvers and less when cruising on the highway. Helps provide the driver good "road feel" through steering wheel feedback.



Celica's 2.2L 4-cylinder engine

### The 2.2-L 4-Cylinder DOHC\* 16-Valve EFI Engine Provides Excellent Power and Economy

This engine achieves 135 horsepower (HP) at 5400 rpm.<sup>1</sup> Its torque is rated at 145 lb-ft at 4400 rpm. With a standard 5-speed manual transmission, it has an EPA highway mileage estimate of 28 mpg\*\*. Engine features include Electronic Fuel Injection (EFI), Dual Overhead Cam (DOHC) technology and 4-valves per cylinder.

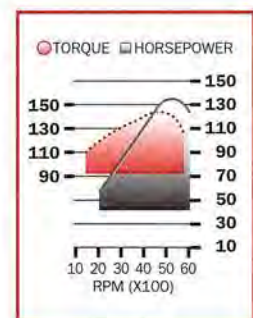
## Drivetrain

### The 1.8-L 4-Cylinder DOHC\* 16-Valve EFI Engine Provides Excellent Economy and Low-End Torque

This engine achieves 105 horsepower (HP) at 5200 rpm. Its torque is rated at 117 lb-ft at a low 2800 rpm. Ninety percent of its usable torque is at low rpm, helping provide quick acceleration. With a standard 5-speed manual transmission, it has an EPA highway mileage estimate of 35 mpg\*\*. Engine features include Electronic Fuel Injection (EFI), Dual Overhead Cam (DOHC) technology and 4-valves per cylinder.

### Dual Overhead Cam (DOHC) and 4-Valves per Cylinder

This arrangement of two intake and two exhaust valves allows more fuel/air mixture into the cylinder for more efficient engine "breathing" and combustion. This helps produce greater horsepower and higher fuel economy. Toyota's DOHC eliminates moving parts such as rocker arms and push rods to help make the engine smoother, quieter and more efficient.



2.2-L engine power chart

### Front-Wheel Drive

All Celica models are front-wheel drive. This drivetrain layout helps provide excellent traction because the car is being pulled forward by the front wheels rather than pushed forward by a traditional rear-wheel-drive configuration.

\* Marketed as Twin-Cam

\*\* See Mileage Statement on back cover

<sup>1</sup> 130 on cars equipped with California emissions



# Features and Benefits



## Optional 4-Speed Electronically Controlled Automatic Overdrive Transmission (4ECT)

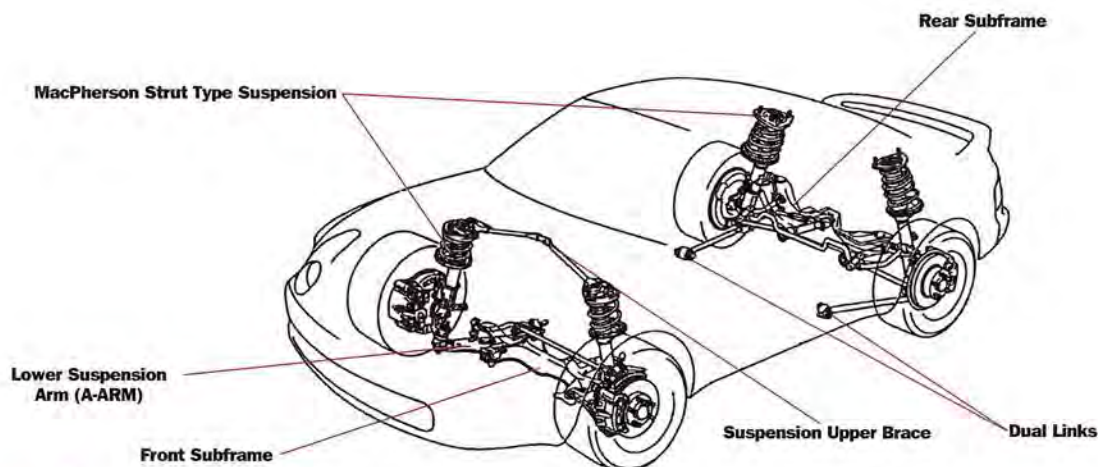
Gear selection is controlled by a sophisticated computer that analyzes driving conditions (speed, load, etc.) and driver actions (throttle position) before selecting a gear. The result is **smoother shifts and**

**improved performance and fuel economy.** Following are four features of the transmission:



1. **The ECT Power Button** has "Normal" and "Power" modes which allow the driver to choose between a sportier feel (stays in lower gears longer and downshifts more readily) or maximum fuel economy (upshifts sooner and downshifts less readily).

2. **Overdrive 4th Gear** reduces engine rpm at highway speeds which helps provide quieter driving and increased fuel economy.
3. **The Overdrive-Off Switch** on the shifter locks out the overdrive 4th gear. This helps prevent "gear hunting" when driving up a steep grade and helps add engine braking when driving downhill.
4. **The Electronic Control Unit** momentarily retards ignition timing and electronically disengages the transmission during gear changes. This helps the transmission provide smoother shifts and better performance.



## Chassis

### 4-Wheel Independent MacPherson Strut Suspension

This MacPherson Strut suspension uses **replaceable cartridges that allow generous wheel travel over rough roads.** Four-wheel independent suspension allows each wheel to react independently to road imperfections with minimum effect on the other wheels. This **enhances handling and stability**, especially in corners and over rough roads, and **provides an exceptional ride.**

### All-Season Steel Belted Radial Tires<sup>2</sup>

The standard P185/70R14 (ST), P205/55R15 (GT) tires **help provide excellent traction** in varied weather conditions.

<sup>2</sup> Celicas with the optional Sports Package receive performance tires

### Front and Rear Stabilizer Bars

These suspension components **help reduce body roll (or leaning) while cornering.** They help provide the Celica greater vehicle stability and driver control during cornering.

### Power-Assisted Variable-Assist Rack-and-Pinion Steering

Rack-and-pinion steering is **responsive and precise**, and allows the driver to experience **increased road feel.** In addition, the power-assist on all Celicas is variable. An engine speed sensor provides more power-assist at low rpm's (e.g. when parking) and less at highway speeds. **This outstanding steering system provides more road-feel at highway speeds, and requires less effort to maneuver the car in slow-speed, tight parking situations.**



# Features and Benefits

## Comfort and Convenience



### KEY FEATURES

Anti-Vibration Subframes

Standard 4-Way Adjustable Front Seats

Standard 50/50 Split-Folding Rear Seat

Noise and Vibration Reduction

Spacious Cargo Area in the Liftback

### BENEFITS

Help insulate the passenger cabin from engine and rear suspension noise and vibrations.

Provide excellent comfort and help reduce fatigue on long trips.

Provides excellent cargo carrying capability and passenger seating options, and allows access to the trunk through the back seat.

A dash silencer helps keep out powertrain noise and a two-piece oil pan rigidly connects the engine and transmission to help reduce vibrations.

Cargo space with the rear seats folded up is 16.2 cubic feet. The Liftback also has a convenient cargo cover that keeps items out of the sunlight.

### Anti-Vibration Subframes

These subframes are used in two places on the Celica to help reduce vibration and noise while adding rigidity for more precise handling.

1. Up front, the engine, transmission, steering and suspension lower arms are mounted to a subframe by bushings, which is in turn mounted to the body by bushings. So, **noise and vibration is reduced in two stages.**
2. A similar system is used in the rear end to **help isolate potential rear suspension noises and vibration** from the passenger cabin.



GT model shown

### Standard 4-Way Adjustable Front Seats

The Celica features standard 4-way adjustable front seats that **provide excellent comfort and flexible accommodations.** Leather trim is optional on the GT.

### Standard 50/50 Split-Folding Rear Seat with Security Lock

**Both rear seats in the Coupe and Liftback can be folded down** to carry large items that extend from the trunk into the back seat, or one seat can be folded down while the other remains up to accommodate passengers. Additionally, **there is a security lock** on the seat backs which are part of the valet trunk-locking system. This means large items can be carried more securely, and the trunk can be accessed from inside the vehicle.



GT model shown



# Features and Benefits



## Standard Convenience Features on Celica ST:

- **Deluxe AM/FM ETR Radio with 4 speakers** provides great sound.
- **Digital quartz clock.**
- **Center console** with cover for storage.
- **Dual cup holder.**
- **Tilt steering wheel** helps aid entry and exit.
- **Variable intermittent windshield wipers** for clearing mist and rain.
- **Unique cloth interior** provides excellent comfort and appearance.
- **Front-, side- and rear-window defoggers** for better visibility.

## Standard Convenience Features on Celica GT:

- **Power windows and door locks** add convenience.
- **Deluxe AM/FM ETR/Cassette with 4 speakers and a power antenna** provides outstanding audio fidelity.



- **Heavy-duty rear-window defogger** with a timer provides easy operation.
- **Rear intermittent wiper** on Liftback only.

## Noise and Vibration Reduction

The Celica has many features that help reduce noise and vibrations in the passenger cabin. Here are three important items:

- **A dash silencer** helps keep out powertrain noise.
- **A two-piece oil pan** that rigidly connects the engine and transmission and acts as a stiffener plate to help reduce vibration.
- **Vibration damping steel** that is applied to the bulkhead and rear wheel wells to reduce vibrations and help absorb engine and road noise.

## Spacious Trunk/Cargo Area

The Celica Coupe has 10.6 cubic feet of trunk space with the rear seats up. The Liftback has 16.2 cubic feet and the convertible has 6.8 cubic feet. These **trunk and cargo spaces are fully lined and have a cargo light for better visibility at night.** The Liftback model features a standard cargo cover that keeps objects out of the sunlight and hidden from view.

## Remote Fuel Lid and Trunk Releases with Valet Locking System

Celica drivers can **conveniently open the fuel lid or trunk from their seats.** They can also enjoy the security that comes with a valet key that will only unlock the doors and operate the ignition — but will not unlock the trunk and glove box.

## Power Convertible Top

Opening the Celica convertible top is as simple as releasing two latches and pressing a button. The power operated top is **made of cloth, which helps dampen extraneous road noise and enhances the car's appearance.**





# Features and Benefits

## Styling



### KEY FEATURES

Contemporary, Sporty Looks

Unique Halogen Headlamps

Impact-Absorbing Color-Keyed Bumpers

Excellent Ergonomics

### BENEFITS

The front fascia and optional contoured rocker panels, aluminum alloy wheels and rear spoiler contribute to a unique and sporty look.

Provide a brighter, whiter light than sealed beam lamps. Round design enhances sleek appearance.

Celica's bumpers match the body color of the vehicle and blend into the fenders for a clean, aerodynamic look.

All instruments can be read easily, and driver controls are reached with ease.

## Exterior

### Three Body Styles Available

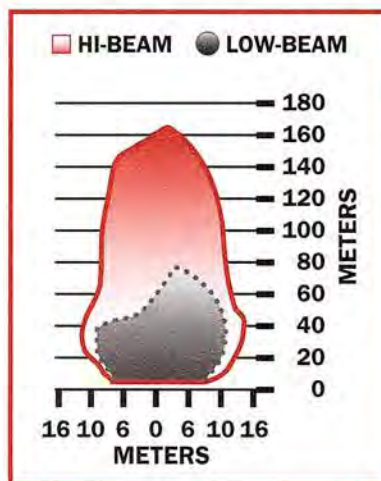
The Celica is designed to accommodate almost any sporty car customer's styling preferences with the availability of three distinctive body styles: **Coupe, Liftback and Convertible.**



1 .33 with optional spoiler on liftback

### Sleek, Upscale Style with Low Aerodynamic Drag

The Celica features a unique sporty appearance. It has a **wide, low design with flared fenders for an aggressive look.** The low drag coefficient of .32<sup>1</sup> helps reduce wind noise and improves fuel economy. The **convertible features a distinctive look that expresses the total exhilaration of open-air driving.**



Celica's headlamp performance

### Unique Halogen Headlamps

These headlamps provide a brighter, whiter light than conventional lamps and help provide better illumination for the driver. Their unique round design helps provide the front end a sleek, contemporary appearance.

### Impact-Absorbing Color-Keyed Bumpers

The first line of protection in a frontal accident, the Celica's bumpers match the body color of the vehicle and blend into the fenders. The flush fit helps provide a smooth, classy look. **The front bumper is designed to emphasize strength in its shape and to enhance the Celica's unique styling.**

### Close-Fit Body Panels

Tight tolerances between body panels help provide the Celica with an almost seamless look and aid in reducing wind noise.



# Features and Benefits



## Wheel Covers

**The ST models have sporty looking wheel covers.**

In addition, both the ST and GT models are available with optional aluminum alloy wheels for **a sportier look and to help reduce the weight of the car for improved performance.**



ST model shown

## Weight Savings

Reduced ABS component size, lightweight asphalt sheeting and unitized components have all helped reduce weight, which **can help improve vehicle performance and economy.** Additionally, the following aluminum components have also helped aid in Celica weight reductions:

- Front bumper reinforcement
- 2-piece oil pan (1.8-L)
- Engine stiffener plate (2.2-L)
- Radiator
- Alloy wheels (optional)

## Optional Rear Spoiler

An optional aerodynamic rear spoiler is available on Liftback models. **It helps improve vehicle stability at highway speeds and contributes to a sportier appearance.**



## Instrument Panel Ergonomics and Appearance

Celica's ergonomics **provide an inviting environment for drivers.** Easy-to-read instruments and easily reached controls help reduce driver fatigue.



# Features and Benefits

## Quality/Dependability/Reliability and Value



### KEY FEATURES

Body Rigidity

Rust Inhibitor Process

Gold-Plated Electrical Connectors

Toyota Warranties

### BENEFITS

**Reinforcements of the rear quarter panels and rear suspension help to reduce noise and vibration in the passenger cabin.**

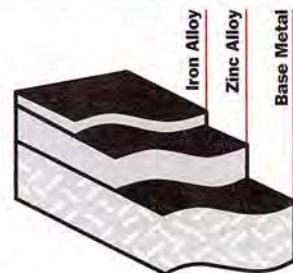
**A multi-step process that helps the body panels to resist rust and maintain their like-new appearance.**

**Superior electrical conductors that resist corrosion and oxidation.**

**Stand behind each product we sell.**

### Each Celica Goes Through An Extensive Rust Inhibitor Process

- Each Celica starts with **rust-resistant Excelite II steels** coated with a zinc and iron alloy. These are used for most inner and outer body panels. If a small scratch occurs, the Excelite II simply causes the paint to turn white and **helps protect the metal from rusting.**

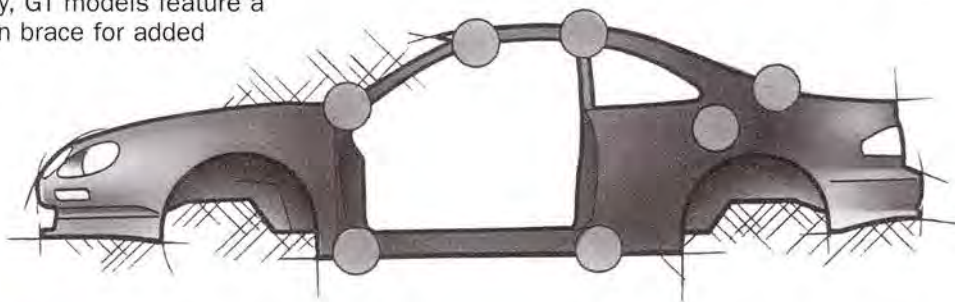


- The body is fully dipped in a **phosphate bath** to make sure that even **the most inaccessible areas resist rust.**
- A **special wax sealer** is applied to the corners and crevices of the hood, doors and trunk lid to help protect rust-prone areas.
- Anti-chip paint** is applied to the front edge of the hood, the lower door panels, and rocker panels to **help protect these areas from stone chips and other minor debris** thrown from the tires. A **lower door molding** also helps protect the lower door from the same.

## Dependability

### Body Construction

Reinforcements of the rear quarter panels and rear suspension areas help to improve handling and reduce vibration and noise in the passenger cabin. Additionally, GT models feature a suspension brace for added stiffness.



## Reliability

### Gold-Plated Electrical Connectors

Gold, one of the best electrical conductors, **resists oxidation and corrosion, thus greatly improving reliability.** These expensive terminals are used in vital circuits such as the fuel injection computer, oxygen sensor and air bag sensor.

### Warranty

Toyota stands behind every Celica with a comprehensive limited warranty:

- 3 years or 36,000 miles (whichever comes first) of **basic coverage.**
- 5 years or 60,000 miles (whichever comes first) of **powertrain coverage.**
- 5 years unlimited mileage of **corrosion coverage.**

Toyota dealers have the complete details on warranty coverage.



# Features and Benefits



## Value

### IntelliChoice Value Accolades<sup>1</sup>

IntelliChoice is an independent company that publishes The Complete Car Cost Guide. This publication, available in many libraries, reports, analyzes and rates cost of ownership data. They provided the following assessments of the Celica:

#### Projected Ownership Cost Savings vs Average

• Celica ST Coupe	\$1,216*
• Celica ST Liftback	\$1,069*
• Celica GT Liftback	\$913*
• Celica GT Convertible	\$2,896*

\*Approximate savings based on annual mileage of 14,000 miles for 5 year ownership period.

#### Projected Depreciation

- Rating: Excellent
- For all Celica ST models and GT Convertible, over 5 years

#### Projected Repair Costs

- Rating: Better than Average
- For all Celica models, over 5 years



#### Drivetrain Warranty

- Rating: Excellent
- For all Celica models, over 5 years

<sup>1</sup> From the 1996 edition of The Complete Car Cost Guide™, Copyright 1996 IntelliChoice, Inc.®, Campbell, CA. Internet Address <http://www.intellichoice.com>



**Air Bags, Dual (SRS)**

In vehicles equipped with an air bag Supplemental Restraint System (SRS), the air bag inflates with nitrogen gas within milliseconds to help limit the motion of the driver's head and upper torso to help prevent injury in a severe frontal impact. This system supplements, but does not replace, the 3-point seatbelt system, which provides primary protection. The air bag is not intended to operate during an impact other than a severe frontal impact, in which case the 3-point system is the only personal protection. In a severe frontal impact, sensors located on both the left and right front fenders, as well as the center main sensor, sense the impact and activate the air bag system. The air bag, which emerges from the steering wheel pad, deflates within a few tenths of a second.

The passenger-side air bag is usually incorporated into the top part of the passenger-side instrument panel. This air bag emerges from an air bag module that can usually be replaced without replacing the entire instrument panel. This bag is larger than the driver-side air bag to ensure that it helps limit the motion of the passenger's head and torso in case of a severe frontal impact.

**Automatic Transmission Shift Lock**

This safety device requires that the ignition is on and the brake pedal is depressed before the transmission lever can be moved into gear. This feature prevents the transmission from being put into "Drive" or "Reverse" and as a result cause inadvertent acceleration.

**Axle Ratio**

The number of times the driveshaft rotates to turn the axle shaft one rotation. For example, if the driveshaft gear had 10 teeth and the axle shaft gear had 30 teeth, the driveshaft gear would have to turn three times to turn the axle shaft gear once. This translates to a ratio of three-to-one (3:1).

**Brake Caliper**

The disc brake component that straddles the rotor and houses the piston, cylinder and brake pads. The piston movement pushes the pad against the rotor to slow or stop the vehicle.

**CFC-Free Air Conditioning**

Vehicle air conditioning system that uses R-134a refrigerant instead of CFC-based chemicals (usually known as Freon).

**Clutch Start Switch**

This device in manual transmission equipped vehicles prevents the vehicle's starter motor from engaging unless the clutch is depressed. This prevents the vehicle from starting while in gear.

**Compression Ratio**

A measurement of how tightly the air-fuel mixture is compressed or squeezed within the cylinder by the piston. This can be determined by taking the total volume of the cylinder when the piston is at its lowest point (Bottom Dead Center, or BDC) and dividing it by the volume when the piston is at its highest point (Top Dead Center, or TDC). In general, higher compression ratios yield greater power.

**Crumple Zones**

These exist at the front and rear of a Celica to help absorb the impact of a collision. These pre-stressed areas in the fender, hood, frame and related body components are designed to deform in a predetermined manner during a collision. Their purpose is to lessen the forces the impact transfers to the passenger compartment. In essence, the crumple zone of a vehicle is sacrificed to help protect the occupants.

**Double Overhead Cam (DOHC)**

An engine configuration with two overhead camshafts per row of cylinders. One camshaft operates the intake valves and the other operates the exhaust valves. This is the usual arrangement in engines with multi-valve cylinder heads. Compared to single overhead cam designs, the direct drive used in all Toyota DOHC engines requires fewer moving parts. It eliminates the rocker arm needed to activate the valves, thus improving efficiency and reducing vibration and noise. Compared to push-rod overhead valve (OHV) engines, which use an arrangement by which the camshaft is located in the engine block and opens the valves via long push-rods and rocker arms, it eliminates the need for both of these components. With fewer moving parts, there is less inertia. So, an overhead cam engine can run at a higher speed and produce more power than a comparably sized push-rod engine.

**Electronic Fuel Injection (EFI)**

A system that injects fuel into the cylinders, and is timed and metered by an electronic control unit.



## **ELR/ALR 3-Point Seatbelts**

The ELR (Emergency Locking Retractor) allows the driver seatbelt to extend and retract with occupant movement, yet locks the belt during a sudden stop or upon impact. The ALR (Automatic Locking Retractor) makes it possible to secure a child seat without using a seatbelt locking clip. To activate the ALR retractor, pull the shoulder belt all the way out, then allow it to retract to the desired length. Press down firmly on the child seat as the belt retracts to buckle the child seat securely in place. The ALR retractor is deactivated by unbuckling the belt and allowing it to retract fully. Do not use a rearward-facing child seat in the front passenger seat. See the Owner's Manual for child seat usage.

## **Halogen Headlamps**

Headlamps with special bulbs that provide brighter illumination than conventional bulbs, yet last longer and use less energy. They get their name from the halogen gas inside the bulb.

## **Horsepower**

The measurement of the ability to do work over time. One horsepower is the amount of energy needed to raise 33,000 pounds a distance of one foot in one minute. Simply put, it is the engine performance rating that helps an engine maintain and maximize vehicle speeds.

## **Hydraulic Shift Pressure**

Automatic transmissions operate by fluid pressures to engage and disengage the transmission's gears from the engine.

## **Independent Suspension**

Each wheel of an independent suspension is sprung separately so that a bump affecting one does not affect the others.

## **Overdrive Transmission**

Overdrive provides a final drive ratio of less than 1:1. This allows the engine to operate at lower rpm at highway cruising speed and provides greater fuel economy, quieter operation, and less wear and tear on the engine. It also helps a vehicle maximize top end speed.

## **Passenger Window Lock-Out System**

When used, this optional system disables the passenger windows from being operated by anyone except the driver.

## **Rack-and-Pinion Steering**

Consists of a round pinion gear attached to the steering shaft, and a flat bar with gear teeth cut into it, called the rack. The rack and pinion mesh at a point between the front wheels. As the steering wheel is turned, the shaft from the steering column turns the pinion gear, forcing the rack either right or left along a horizontal plane. The rack is linked to the wheels via tie rods, which push and pull the wheels to steer them. In general, rack-and-pinion steering is precise and responsive.

## **Safety Glass (Laminated)**

Used in Celica windshields, it consists of two glass panes bonded together with a sheet of plastic sandwiched in between. This keeps the glass together during an impact, reducing injuries from sharp edges.

## **Safety Glass (Tempered)**

This heat-treated glass used in side and rear windows breaks into small blunt pieces when broken.

## **Safing Sensor**

A sensor in a vehicle's air bag system designed to help ensure deployment when appropriate.

## **Side-Door Beams**

Required in all passenger cars by the Federal Government, these are steel beams inside the door that deflect certain types of side impacts. They help protect passengers from intrusion in a side collision.

## **Power-Assisted Variable-Assist Power Steering**

The power assist to the steering is adjusted according to either engine speed or road speed. Assist is greatest at low rpm or road speed, such as when parallel parking. Assist is lowest when the engine or road speed is greatest such as when cruising at highway speeds.

## **Subframe**

A frame separate from the vehicle's main frame, that supports specific vehicle components.

## **Torque**

A force in a twisting motion. In an engine, torque is the twisting motion at the crankshaft measured in foot-pounds (lb-ft). One foot-pound is the force of one pound acting at right angles at the end of an arm one foot long. Simply stated, torque is the engine power that gets a vehicle to speed — felt especially at off-line take-off and during acceleration. Torque is also important in getting heavy loads moving.

**Toyota Vehicle Intrusion Protection (V.I.P.)**

This is an optional break-in alarm that flashes the headlamps/taillamps and sounds the horn when a secured Celica is broken into. It also disables the starter if someone forcefully enters the car. The system is automatically armed by removing the ignition key from the ignition.

**Two-Turn Door Locks**

This option provides additional security by unlocking the driver's door only when the key is inserted and turned once. A second turn unlocks the passenger door.

**Valet Trunk Locking System**

A locking system with two different keys. One key can only open the doors and operate the ignition. The second key opens all locks, including those for the glove box and trunk or rear hatch, and operates the ignition. The purpose is to provide a valet with a key that operates the ignition, but does not unlock the storage compartments. On cars with folding seatbacks, this locking system also includes special seat latches to help keep the contents of the trunk or hatch secure.

**Ventilated Front Disc Brakes**

Vents in the brake rotors allow cooling air to pass through the hot discs. This helps reduce heat build-up and lessens the chance of the brakes fading, glazing or warping.



# **N**otes

---

# **N**otes

---





COPYRIGHT© 1996 TOYOTA MOTOR SALES, U.S.A., INC. ALL RIGHTS RESERVED. COPYING OR ANY OTHER REPRODUCTION, IN WHOLE OR IN PART, WITHOUT THE EXPRESS WRITTEN PERMISSION OF TOYOTA MOTOR SALES, U.S.A., IS STRICTLY PROHIBITED.

Toyota Motor Sales, U.S.A., Inc., by the publication and/or dissemination of this publication does not create any warranties, either expressed or implied, as to Toyota products. The information contained herein was up-to-date at the time of publication, but may subsequently be changed or added to without notice and without incurring any obligation. Reliance on this information creates no liability for Toyota.

This publication is produced solely for use as an informational sales aid. Toyota Motor Sales, U.S.A., Inc., its employees, representatives, and/or agents shall not be held liable for any omission of data or inclusion of erroneous data even where said omission is alleged to have been relied upon by a buyer of Toyota products. This publication and any material contained herein may not be reproduced without the prior written consent of Toyota's Training Department.

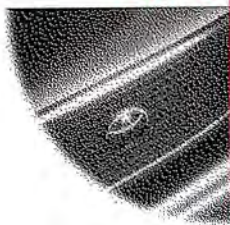
Any EPA fuel economy figures included in this publication are estimates to be compared with "estimated mpg" of other vehicles. Drivers may get different mileage depending on the speed they drive, weather conditions, trip length, condition of the vehicle and vehicle equipment. Mileage in actual driving will probably be less than EPA estimated fuel economy for highway driving.

RETAIL DEVELOPMENT  
M/N 00623-97001-1





# 1 9 9 7 INTERIOR TRIM



## CELICA

EXTERIOR	CODE	INTERIOR	CODE	ST CLOTH	GT CLOTH	GT CONVERT CLOTH	GT LB SPORT CLOTH <sup>1</sup>	GT LEATHER <sup>2</sup>	GT CONVERT LEATHER <sup>2</sup>
Super White	(040)	Black	(20)	■	■	■	■	■	■
Topaz Metallic	(1A2)	Black	(20)	■	■		■	■	
		Black/Ivory <sup>3</sup>	(00)	■	■			■	
Blue Slate Metallic	(183)	Black	(20)	■	■		■	■	
Alpine Silver Metallic	(199)	Black	(20)	■	■		■	■	
Black	(202)	Black	(20)	■	■	■	■	■	■
		Black/Ivory <sup>3</sup>	(00)	■	■			■	
Renaissance Red	(3L2)	Black	(20)	■	■	■	■	■	■
		Black/Ivory <sup>3</sup>	(00)	■	■			■	
Bright Turquoise Pearl	(756)	Black	(20)	■	■		■	■	
Fiesta Blue Metallic*	(933)	Black	(20)	■	■	■	■	■	■

### Notes:

\*New for 1997

(1) Optional; included with Sport Package (SX), on GT Liftback only

(2) Optional; also included with Sport Package (SL)

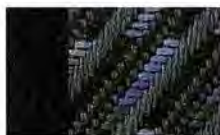
(3) Black/Ivory interior includes:

on ST models: Ivory seats, headliner, sunvisors, carpeting; Black door panels, I/P, center console

on GT models: Ivory main seat material, headliner, sunvisors, carpeting; Ivory side bolster seat material, door panels, I/P, center console

with Leather: Ivory leather-trimmed seats, headliner, sunvisors, carpeting; Black door panels, I/P, center console

### ST



Cloth Black (20)



Cloth Black/Ivory (00)

### GT



Cloth Black (20)



Cloth Black/Ivory (00)



Leather Black (20)



Leather Black/Ivory (00)

### GT LB



Sport Cloth Black (20)



1 9 9 7  
EXTERIOR  
COLORS



CELICA

Super White (040)



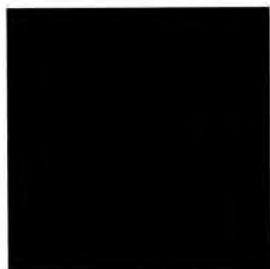
Topaz Metallic (1A2)



Blue Slate Metallic (183)



Alpine Silver Metallic (199)



Black (202)



Renaissance Red (3L2)



Bright Turquoise Pearl (756)



Fiesta Blue Metallic\* (933)

Notes:

\*New for 1997

