

1 9 9 7

PASEO

P r o d u c t S o u r c e

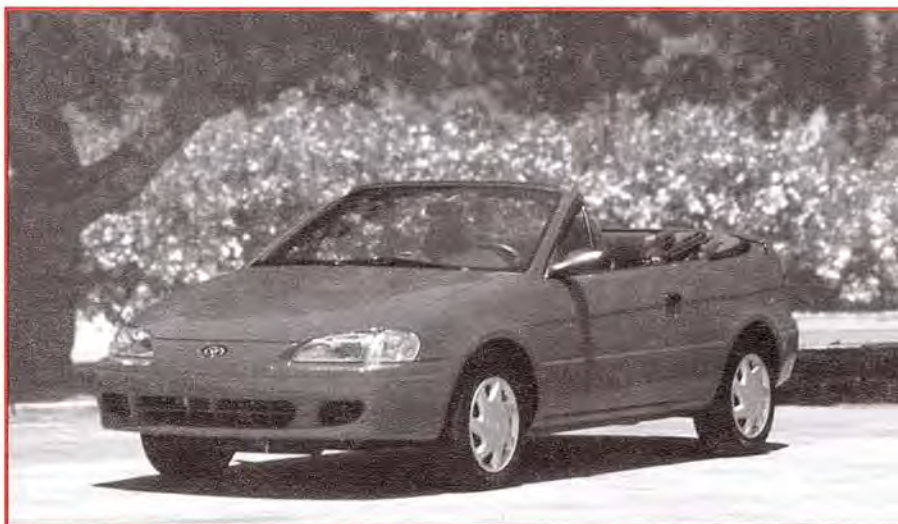
 **TOYOTA**

Table of Contents

Model Line-Up	2
Standard Features	3
Standard/Optional Features	5
Specifications.....	7
Features and Benefits.....	8
Safety	8
Performance.....	10
Comfort and Convenience	12
Styling.....	14
Quality/Dependability/Reliability and Value	16
Glossary	18

M

odel Line-Up



New for 1997

New Models

- Paseo Convertible 5M (1583)
- Paseo Convertible 4ECT (1584)

All Models

- Driver's seat vertical height adjuster
- Revised door trim
- Standard rotary heater controls
- New exterior color
 - Coral Rose Pearl (3L9)
- Deleted exterior color
 - Ruby Pearl (3L3)

Coupe Models

- New dual covered vanity mirrors (uncovered on Convertible)

Convertible Models

- Manually-operated black vinyl top with a glass rear window

Body Styles and Trim Levels

Body Style	Trim Level	Trans.	Displacement	Cyl.	bhp	Model #
2-Door Coupe	Standard	5M	1.5 liter	4	93	1525
	Standard	4ECT	1.5 liter	4	93	1526
2-Door Convertible	Standard	5M	1.5 liter	4	93	1583
	Standard	4ECT	1.5 liter	4	93	1584

Standard Features

Paseo

Mechanical

- 1.5-liter 4-cylinder DOHC* 16-valve EFI engine
- Distributorless ignition
- Knock Control System (KCS)
- Front-wheel drive
- 5-speed manual overdrive transmission
- Independent MacPherson strut front suspension
- Trailing torsion beam rear suspension
- Front and rear stabilizer bars
- Power-assisted rack-and-pinion steering
- Power-assisted ventilated front disc/rear drum brakes
- P185/60R14 All-season steel belted radial tires
- Temporary spare tire
- Vibration damping steel (bulkhead and rear wheel wells)

Exterior

- Aero-style halogen headlamps with "lights-on" warning buzzer
- Color-keyed bumpers
- Tinted glass
- Dual remote-controlled black mirrors
- Black-out windshield and roof drip molding
- Black-out door sash and door belt
- Black bodyside molding
- Black-out wheel wells
- Full wheel covers
- Toyota and "Paseo" badging

Interior

- 2-way adjustable high-back sport-type front seats (slide, recline) with integrated headrests
- One-piece folding rear seat back with security lock
- Driver's seat vertical height adjuster
- Rear-passenger entry/exit device



Model shown may have optional equipment

- Cloth seat and door trim
- Dual door map pockets with integrated speakers
- Urethane steering wheel (4-spoke)
- Dual covered vanity mirrors
- Passenger-side assist grip
- Front dual cup holder/rear cup holder
- Cloth headliner (coupe only)
- Full carpeting
- Fully-lined trunk
- White face instrument panel gauges
- Instrumentation: speedometer, tripmeter, odometer, tachometer, coolant temperature and fuel level gauges
- Warning lights: air bag, door ajar, brake, oil pressure, fuel level, check engine, seatbelt disconnect, battery, key in ignition, and headlights-on
- Rotary heater controls
- Intermittent windshield wipers
- Front-, side- and rear-window defoggers
- Digital quartz clock
- Dome light (coupe only) and trunk light
- Remote hood, fuel lid and trunk releases
- Valet trunk locking system
- Driver-side A-pillar mounted retractable antenna
- AM/FM ETR Radio with 4 speakers

* Marketed as Twin-Cam

Standard Features

Paseo (Cont'd)

Safety**

- Driver-and passenger-side air bags
Supplemental Restraint System (SRS)
- Seatbelts
 - Driver: 3-point with ELR
 - Front passenger: 3-point with ELR/ALR
 - Rear passengers: 3-point with ELR/ALR
- Energy-absorbing steering wheel and column
- Side-door beams
- Meets 1997 dynamic side-impact standards



Convertible Adds:

- Manually-operated black vinyl top with a glass rear window and a black vinyl convertible boot
- Dual vanity mirrors (uncovered)

** See "Safety" section beginning on page 8 for additional information

S

Standard/Optional Features

Mechanical

	2-DOOR COUPE	2-DOOR CONVERTIBLE
• California emissions {CA}	O	O
• 48-state emissions {RE}	O	O
• 1.5-liter 4-cylinder DOHC* 16-valve EFI engine	S	S
-Distributorless ignition	S	S
-Knock Control System (KCS)	S	S
-Engine block heater	A ¹	A ¹
• Front-wheel drive	S	S
• 5-speed manual overdrive transmission	S	S
• 4-speed electronically controlled automatic overdrive transmission (4ECT)	O	O
• Independent MacPherson strut front suspension	S	S
• Trailing torsion beam rear suspension	S	S
• Front and rear stabilizer bars	S	S
• Power-assisted rack-and-pinion steering	S	S
• Power-assisted ventilated front disc/rear drum brakes	S	S
• Anti-lock Brake System (ABS) {AB}	O ²	O ²
• P185/60R14 All-season steel belted radial tires	S	S
• Temporary spare tire	S	S
• Vibration damping steel (bulkhead and rear wheel wells)	S	S
• All-Weather Guard Equipment Package {CK}	O	O

Exterior

• Aero-style halogen headlamps with "lights-on" warning buzzer	S	S
• Front-end mask {KM}	A ¹	A ¹
• Color-keyed bumpers	S	S
• Tinted glass	S	S
• Dual remote-controlled black mirrors	S	S
• Black-out windshield and roof drip molding	S	S
• Black-out door sash, door belt and rocker panel molding	S	S
• Black bodyside molding	S	S
• Black-out wheel wells	S	S
• Full wheel covers	S	S
• Styled polycast wheels {ST}	O	O
• Aluminum alloy wheels {AW}	O	O
• Wheel locks (steel) {WS}	A	A
• Mudguards {MF}	A	A
• Color-keyed aerodynamic rear spoiler with LED-type Center High-Mount Stop Lamp (CHMSL) {RF}	O	S
• Manually-operated black vinyl top with rear glass window and black vinyl convertible boot	NA	S
• Badging (front and rear): Toyota logo, Toyota name and "Paseo"	S	S

Interior

• 2-way adjustable high-back sport-type front seats (slide, recline) with integrated headrests	S	S
• One-piece folding rear seat back with security lock	S	S
• Driver's seat vertical height adjuster	S	S
• Rear-passenger entry/exit device	S	S
• Cloth seat and door trim	S	S
• Dual door map pockets with integrated speakers	S	S
• Urethane steering wheel (4-spoke)	S	S
• Passenger-side assist grip	S	S
• Front dual cup holder/rear cup holder	S	S
• Cloth headliner	S	NA
• Cargo net {GN}	A	A
• Full carpeting	S	S
• Carpeted floor mats, 4-piece {CF}	A	A

Legend

S	Standard
O	Optional
A	Dealer/Port-Installed
NA	Not Available
{ }	Option Code

Notes:

{CK}	Includes Cold Area Package and heavy-duty: battery, starter, alternator with cover, rear-window defogger with timer, heater, rear heater duct, washer tank, windshield-wiper motor and trunk door trim
{ST}	Includes polycast wheels (4) with P185/60R14 All-season steel belted radial tires
{AW}	Includes aluminum alloy wheels (4) with P185/60R14 All-season steel belted radial tires
*	Marketed as Twin-Cam
1	DIO only
2	Includes larger temporary spare tire; ABS not available with Cruise control {CL}

S

Standard/Optional Features

Interior (Cont'd)

	2-DOOR COUPE	2-DOOR CONVERTIBLE
• Dual vanity mirrors (covered on coupe)S	.S
• Fully-lined trunkS	.S
• White face instrument panel gaugesS	.S
• Instrumentation: speedometer, tripmeter, odometer, tachometer, coolant temperature and fuel level gaugesS	.S
• Warning lights: air bag, door ajar, brake, oil pressure, check engine, fuel level, seatbelt disconnect, battery, key in ignition, and headlights-onS	.S
• Pop-up/removable glass sunroof with removable sunshade and storage pouch {SR}O	.NA
• Air conditioning (CFC-free) {AC}O/A	.O/A
• Rotary heater controlsS	.S
• Toyota Vehicle Intrusion Protection (V.I.P.) {VI}/{V3}A	.A
• Keyless Entry {KE}A	.A
• Cruise control {CL}O ³	.O ³
• Intermittent windshield wipersS	.S
• Front-, side-, and rear-window defoggersS	.S
• Digital quartz clockS	.S
• Dome light and trunk lightS	.S
• Remote hood, fuel lid and trunk releasesS	.S
• Valet trunk locking systemS	.S
• Driver-side A-pillar mounted retractable antennaS	.NA
• AM/FM ETR Radio with 4 speakers {RA}S	.S
• Deluxe AM/FM ETR/Cassette with 4 speakers {EX}O	.O
• Auto-Reverse Cassette Deck with Dolby® ⁴ {P4}A	.A
• Compact Disc Deck {P5}A ⁵	.A ⁵
• 6-Disc CD Changer {P9}A ⁵	.A ⁵
• Power Package {PO}O	.O

Safety*

• Driver- and passenger-side air bags Supplemental Restraint System (SRS)S	.S
• Seatbelt, driver: 3-point with ELR ⁶S	.S
• Seatbelt, front passenger: 3-point with ELR/ALR ⁷S	.S
• Seatbelt, rear passengers: 3-point with ELR/ALR ⁷S	.S
• Energy-absorbing steering wheel and columnS	.S
• Side-door beamsS	.S

Legend

S	Standard
O	Optional
A	Dealer/Port- Installed
NA	Not Available
{ }	Option Code

Notes:

- {PO} Includes power windows and door locks
- * See "Safety" section beginning on page 8 for additional information
- 3 Not available with ABS {AB}
- 4 Dolby® is a registered trademark of Dolby Laboratories, Inc.
- 5 Requires 4-speaker ETR/Cassette {EX}
- 6 Emergency Locking Retractor (ELR)
- 7 Emergency Locking Retractor (ELR)/Automatic Locking Retractor (ALR)

Specifications

Mechanical

ENGINE

Type	1.5-L 4-Cyl ¹ DOHC* 16-V EFI	1.5-L 4-Cyl ¹ DOHC* 16-V EFI
Horsepower (bhp @ rpm)	93 @ 5400	93 @ 5400
Torque (lb-ft @ rpm)	100 @ 4400	100 @ 4400
Bore x Stroke (in.)	2.91 x 3.43	2.91 x 3.43
MPG (EPA est. city/hwy)	5M - 30/35	5M - 30/35
	4ECT - 28/34	4ECT - 28/34

DRIVETRAIN

Type	Front-wheel drive	Front-wheel drive
------	-------------------	-------------------

TRANSMISSIONS

-standard	5-speed manual overdrive	5-speed manual overdrive
-optional	4-speed ECT automatic overdrive	4-speed ECT automatic overdrive

SUSPENSION

-front	Independent; MacPherson strut with stabilizer bar	Independent; MacPherson strut with stabilizer bar
-rear	Trailing torsion beam with stabilizer bar	Trailing torsion beam with stabilizer bar

STEERING

Type	-standard	Power-assisted rack-and-pinion	Power-assisted rack-and-pinion
Steering Ratio		17.5:1	17.5:1
Turning Diameter** (ft.)		32.2	32.2
Turns***		3.0	3.0

BRAKES

Type	-standard	Power-assisted ventilated front disc/rear drum	Power-assisted ventilated front disc/rear drum
	-optional	Anti-lock Brake System (ABS) ²	Anti-lock Brake System (ABS) ²

WHEELS

Type/Size	-standard	Steel / 5.5 x 14	Steel / 5.5 x 14
	-optional	Polycast or Alloy / 5.5 x 14	Polycast or Alloy / 5.5 x 14

TIRES

Type		All-season steel belted radials	All-season steel belted radials
Size		P185/60R14	P185/60R14
Spare		Temporary ²	Temporary ²

CAPACITIES

Curb Weights (lbs.)	5M - 2025	4ECT - 2125	5M - 2160	4ECT - 2260
Fuel Tank (gals.)	11.9		11.9	
Towing (lbs.)	Not recommended		Not recommended	

Exterior

Wheelbase (in.)		93.7	93.7
Overall Length (in.)		163.6	163.6
Overall Width (in.)		65.4	65.4
Overall Height (in.)		50.0	50.0
Tread Width	-front/rear (in.)	55.3 / 54.9	55.3 / 54.9
Drag Coefficient (Cd)		.31	.31

Interior

Seating Capacity		4	4
Head Room	-front/rear (in.)	37.8 / 32.0	37.8 / 28.5
Leg Room	-front/rear (in.)	41.1 / 30.0	41.1 / 28.4
Shoulder Room	-front/rear (in.)	53.3 / 50.4	51.8 / 36.9
Hip Room	-front/rear (in.)	48.9 / 43.2	53.9 / 37.2
Trunk	-seat up (cu. ft.)	7.5	6.6

Safety†

OCCUPANT RESTRAINT SYSTEMS

Air Bag (SRS)		Driver- and passenger-side	Driver- and passenger-side
Seatbelts	-driver	3-point with ELR ³	3-point with ELR ³
	-front passenger	3-point with ELR/ALR ⁴	3-point with ELR/ALR ⁴
	-rear passengers	3-point with ELR/ALR ⁴	3-point with ELR/ALR ⁴

Notes:

—	Information not available	1	Cast iron engine block with aluminum alloy head
*	Marketed as Twin-Cam	2	Larger temporary spare tire with optional ABS
**	Curb-to-curb	3	Emergency Locking Retractor (ELR)
***	Lock-to-lock	4	Emergency Locking Retractor (ELR)/Automatic Locking Retractor (ALR)
†	See "Safety" section beginning on page 8 for additional information		

Features and Benefits

Safety



KEY FEATURES

Crumple Zones

Dual Air Bags
Supplemental
Restraint System
(SRS)*

Twin Side-
Door Beams

Optional 4-Wheel
Anti-lock Brake
System (ABS)

BENEFITS

Help absorb the impact of a front or rear collision.

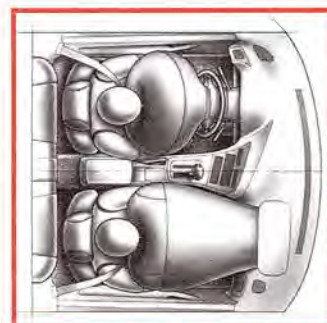
Helps limit the motion of the head and upper body in the event of a severe frontal collision.

Help provide some protection if the Paseo is hit from the side.

Pulsates brakes to avoid skids caused by wheel lock-up during panic stops.

Dual Air Bags Supplemental Restraint System (SRS)*

In a severe frontal collision, sensors (located in the floor tunnel) **detect the force of the impact and cause the bags to inflate** within milliseconds (after it begins to happen) **helping to limit the motion of the head and upper body.** Safety belts must be worn at all times for maximum protection. Air bags won't inflate in minor frontal impacts or other types of accidents.



Driver and passenger air bags are standard on Paseo

Impact Protection

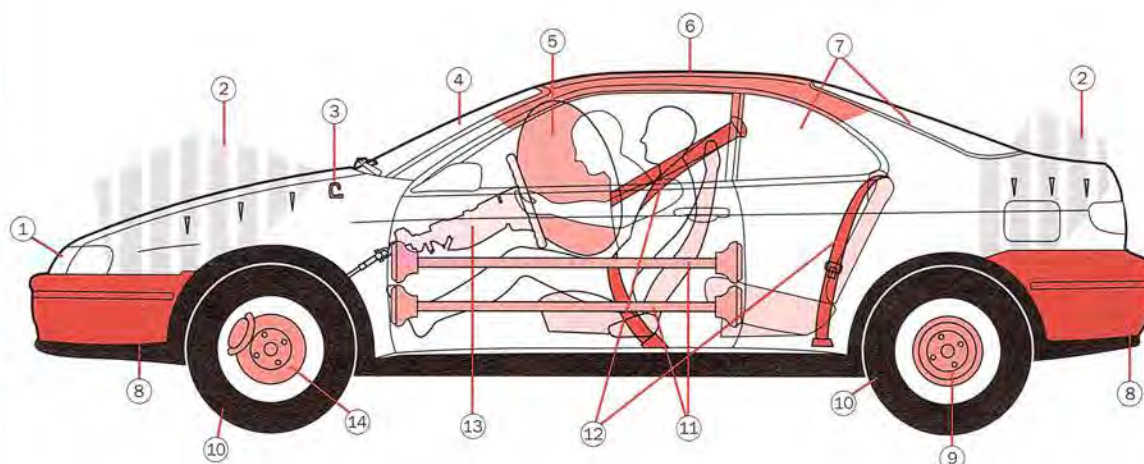
Crumple Zones

Protective features at the front and rear of the Paseo that **help absorb the impact of a collision.** These pre-stressed areas in the fender, hood, and related body components are designed to crush and absorb energy during an impact. As the area successively crushes in a collision, crash energy is dissipated, which **helps prevent much of the collision energy from reaching the passenger compartment.**

Twin Side-Door Beams

Two steel beams located under the sheet metal in each Paseo door **help provide some protection from intrusion in certain types of side collisions (or impacts).**

- | | |
|----------------------------|---|
| 1 Halogen headlamps | 9 Drum brakes/ABS** |
| 2 Crumple zones | 10 All-season steel belted radial tires |
| 3 Hood hold-down hooks | 11 Twin side-door beams |
| 4 Laminated safety glass | 12 3-point seatbelts |
| 5 Dual air bags (SRS)* | 13 Energy-absorbing steering wheel and column |
| 6 Roof strength | 14 Disc brakes/ABS** |
| 7 Tempered safety glass | |
| 8 Impact-absorbing bumpers | |



* The Toyota driver and front passenger air bags are a Supplemental Restraint System (SRS) designed to inflate in a severe frontal collision. In all other accidents, the air bags will not inflate. To minimize the risk of severe injury in all types of crashes, all occupants must always wear seatbelts. Do not sit or place objects close to an air bag. Do not use rearward-facing child seats in any front passenger seat. The force of a deploying air bag SRS may cause serious injury. Please see the Owner's Manual for instructions on SRS and child seat usage.

** ABS is optional

Features and Benefits



3-Point ELR/ALR Safety Belts at All Outboard Locations¹

The ELR (Emergency Locking Retractor) allows the belts to extend or retract with occupant movement, **yet locks them during a sudden stop or upon impact.** The ALR (Automatic Locking Retractor) **allows a child seat to be secured without using a seatbelt locking clip.** Do not use a rearward-facing child seat in any front passenger seat. See Owner's Manual for child seat usage.

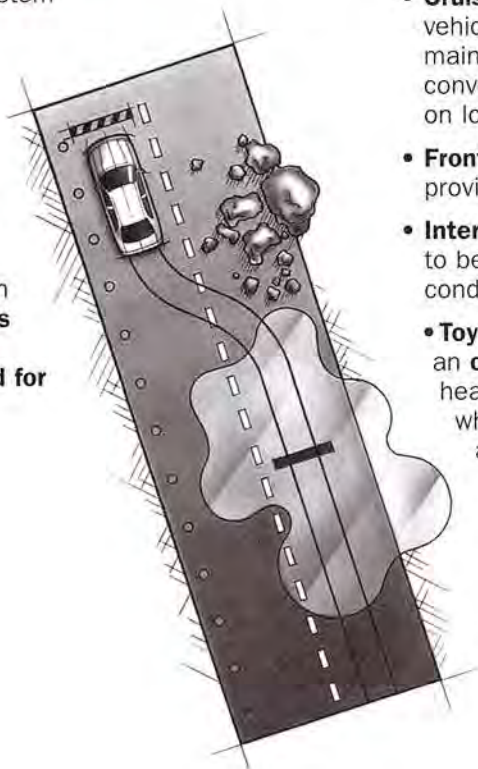
Hood Hold-Down Hooks

Two hooks at the back end of the hood (near the cowl) **help keep the hood in place during a frontal collision.** They are designed to help restrain the hood from being pushed rearward into the passenger compartment, **helping to protect the occupants.**

Accident Avoidance

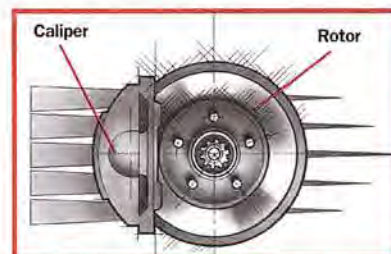
4-Wheel Anti-lock Brake System (ABS)²

ABS is a sophisticated computer-controlled system that **helps to regulate braking pressure to help avoid wheel lock-up during heavy braking.** When the wheels are beginning to lock, the computer causes the brakes to pulse more rapidly than humanly possible. **This allows the wheels to rotate rather than skid for better stopping control.**



Power-Assisted Front Disc Brakes with Ventilated Front Rotors

Excessive heat can cause brake "fade" — components can glaze and even warp — causing a reduction in braking effectiveness. Vents in the brake discs (or rotors) allow cooling air to pass through the hot discs. This **helps reduce heat build-up to maintain stopping power, and helps lessen the chance of the brakes fading, glazing or warping.**



Personal Security

The following standard or optional features provide customers greater feelings of "safety and security" every time they enter and use their Paseo:

- **Cruise control²** allows the driver to set a specific vehicle speed which the vehicle will automatically maintain. This adds an extra measure of convenience and can help reduce driver fatigue on long trips.
- **Front-, side- and rear-window defoggers** help provide better visibility.
- **Intermittent windshield wipers** allow the driver to better control wiper timing to suit weather conditions.
- **Toyota Vehicle Intrusion Protection (V.I.P.)²** is an **optional break-in alarm** that flashes the headlamps and taillamps and sounds the horn when a secured Paseo is broken into. It also **disables the starter** if someone forcefully enters the car. The system is automatically armed by removing the ignition key from the ignition.

¹ Driver's side has ELR. Outboard passenger seats have ELR and ALR

² Optional

Features and Benefits

Performance



KEY FEATURES

Economical 1.5-L
4-Cylinder DOHC*
16-Valve EFI Engine

Dual Overhead Cam
and 4-Valves
per Cylinder

Optional 4-Speed
Electronically
Controlled Automatic
Transmission (4ECT)

Toyota Direct Ignition
(Distributorless)

Front and Rear
Stabilizer Bars

BENEFITS

This engine develops 93 HP and 100 lb-ft of torque while providing excellent mileage, especially with the standard 5-speed manual overdrive transmission.**

Help increase power and economy by allowing more fuel/air mixture into the cylinder for more efficient combustion.

Provides better driveability and less gear hunting than conventional automatics for a smoother, more enjoyable ride.

Eliminates moving parts which helps improve performance, enhance durability and reliability and reduce maintenance.

Help reduce body roll (or lean) while cornering and help provide greater driver control.

Dual Overhead Cam (DOHC) and 4-Valves per Cylinder

This arrangement of two intake and two exhaust valves **allows more fuel/air mixture into the cylinder for more efficient engine "breathing" and combustion. This helps produce greater horse-power and higher fuel economy.** Toyota's DOHC eliminates moving parts such as rocker arms and push rods to **help make the engine smoother, quieter and more efficient.**

Optional 4-Speed Electronically Controlled Automatic Transmission (4ECT)

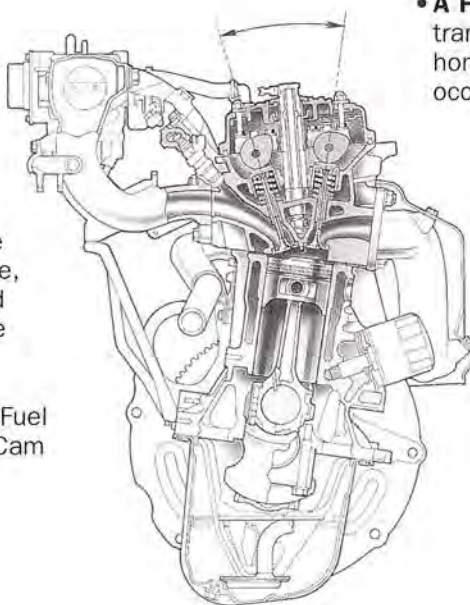
Gear selection is controlled by a sophisticated computer that analyzes driving conditions (speed, load, etc.) and driver actions (throttle position) before selecting a gear. **The result is smoother shifts and improved performance and fuel economy. Following are four key features of the transmission:**

- **Overdrive 4th Gear** reduces engine rpm at highway speeds which helps provide quieter driving and increased fuel economy.
- The **Electronic Control Unit** momentarily retards ignition timing and electronically disengages the transmission during gear changes. This results in smoother shifts and better transmission performance when it is under heavy load.
- **Self-diagnostics** allow the transmission computer to detect and warn when a malfunction occurs.
- **A Fail-safe Function** allows the transmission to provide "limp home" power if a malfunction occurs.

Drivetrain

The 1.5-L 4-Cylinder DOHC* 16-Valve EFI Engine Provides Excellent Economy and Improved Torque

This engine **achieves 93 horsepower (HP) at 5400 rpm. Its torque is rated at 100 lb-ft at 4400 rpm**, with most of the torque being generated in the more usable, low engine speeds. With a 5-speed manual overdrive transmission, the 1.5-L engine has an EPA highway mileage estimate of 35 mpg**. Engine features include Electronic Fuel Injection (EFI) and Dual Overhead Cam (DOHC) technology.



* Marketed as Twin-Cam

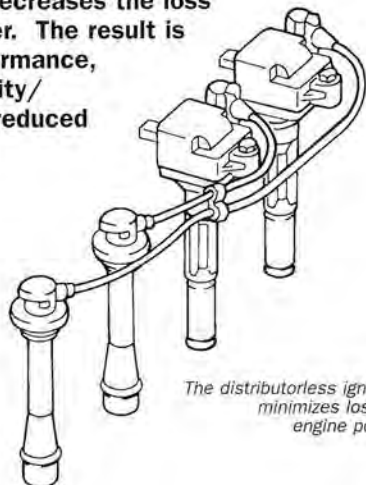
** See Mileage Statement on back cover

Features and Benefits



Toyota Direct Ignition (Distributorless)

Eliminates all moving parts (including the distributor cap and rotor) by placing a compact coil directly on two of the four spark plugs. This **minimizes misfiring and decreases the loss of engine power**. The result is **improved performance, greater durability/reliability and reduced maintenance**.



The distributorless ignition minimizes loss of engine power

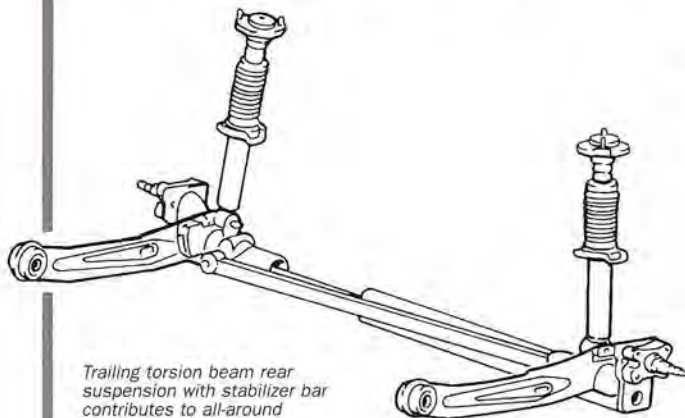
Front-Wheel Drive

The Paseo is a front-wheel drive car. This drivetrain layout **helps provide excellent traction** because the car is being pulled forward by the front wheels, rather than pushed forward by a traditional rear-wheel-drive configuration. **Traction is also enhanced because the engine is placed over the front wheels**.

Chassis

Trailing Torsion Beam Rear Suspension

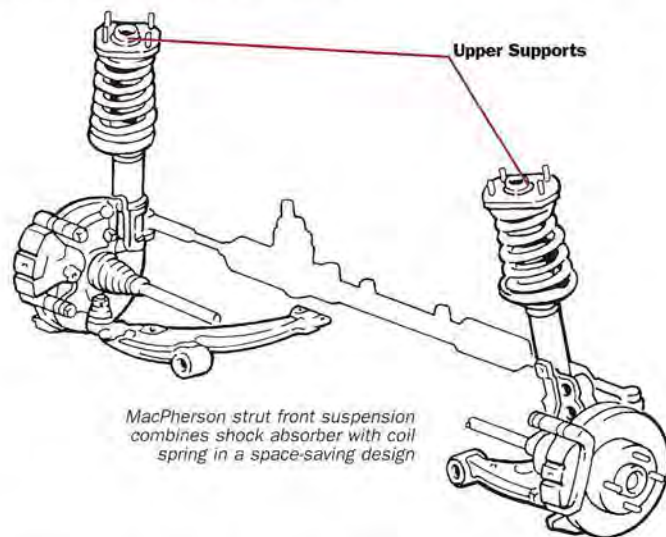
The trailing torsion beam type suspension with built-in stabilizer bar is adopted with an **aim to ensure high stability, control and riding comfort, while reducing weight and increasing space utility**.



Trailing torsion beam rear suspension with stabilizer bar contributes to all-around ride comfort

Independent MacPherson Strut Front Suspension

Paseo's MacPherson Strut front suspension uses replaceable cartridges that **allow generous wheel travel over rough roads**. The independent suspension helps each wheel to step over road imperfections with minimum effect on the other wheels. This combination **helps provide the driver with a smooth ride, excellent vehicle control, and simple suspension maintenance**.



MacPherson strut front suspension combines shock absorber with coil spring in a space-saving design

Front and Rear Stabilizer Bars

These suspension components **help reduce body roll (or leaning) while cornering**. They help provide the Paseo greater vehicle stability and driver control during cornering.

Power-Assisted Rack-and-Pinion Steering

Rack-and-pinion steering is a simple, precise steering system that **is rugged and durable, and also provides outstanding steering response, and excellent road feel**. The power-assist helps provide a low steering effort, especially during slow-speed maneuvers.

All-Season Steel Belted Radial Tires

The standard P185/60R14 tires **help provide excellent traction in all weather conditions**.

Features and Benefits

Comfort and Convenience



KEY FEATURES

BENEFITS

Standard Sport-Type Front Bucket Seats

Provide comfort and support, combined with a sporty look. Driver's seat features slide and recline adjustments. Passenger seat adds a tilt/slide mechanism to aid back seat entry and exit.

Standard Folding Rear Seat

Increases vehicle cargo capacity when folded down. Also has special security lock to limit access to the trunk from the rear seat.

Low-Liftover Height Trunk

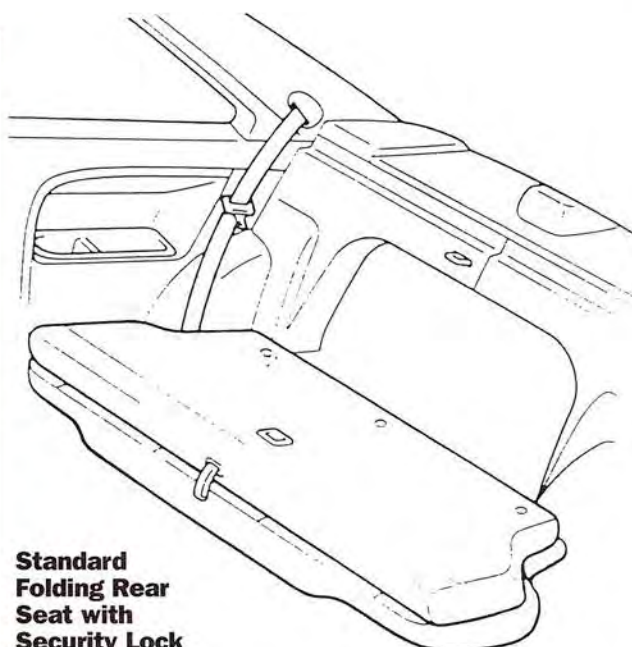
A lowered-height trunk opening and high-lift lid help provide easy loading and unloading of cargo.

Noise and Vibration Reduction

Paseo engineers have incorporated many features to help reduce noise and vibration in the passenger cabin.

Adjustable High-Back Sport-Type Front Bucket Seats

The Paseo features standard two-way adjustable driver and passenger seats with integrated headrests that **provide excellent comfort and improved lumbar support**. The passenger seat has a tilt/slide mechanism that helps provide easy access to the rear seats. And new for 1997, the driver's seat has a vertical height adjuster.



Standard Folding Rear Seat with Security Lock

The rear seat folds down to **provide access to the trunk and increase the functional cargo area size**. This makes it possible to transport long cargo items such as skis or a baby stroller. The security lock limits access to the trunk and its contents through the rear seats.



Low-Liftover Height Trunk

The Paseo has a low-liftover height for easy cargo loading and unloading. The coupe's 7.5 cubic feet of space is accessed through a trunk lid that features a nearly vertical opening angle.

Features and Benefits



Noise and Vibration Reduction

The Paseo has many features that help reduce noise and vibrations in the passenger cabin. Here are five important items:

- An **input-separation type upper support** for the front suspension helps reduce ride noise and vibrations.
- **Vibration damping sandwich panels** are applied to the bulkhead and rear wheel wells to help reduce vibrations and absorb engine and road noise.
- **Engine mounts** fastened at five points help dampen engine vibrations and noise for a quieter ride.
- **Asphalt sheets** are strategically placed in the floor panels for noise reduction.
- A **sealing material** fills the roof pillars to help reduce noise, squeaks and rattles.

Standard Convenience Features on Paseo:

- **Dual door map pockets** provide convenient storage.
- The **digital quartz clock** provides bright illumination that is easier to read.
- **Front dual cup holder and single holder in the rear** provide an extra measure of convenience.
- **New rotary heater controls** are positioned close to the driver for easy reach.



Excellent Ergonomics

All driver and passenger controls have been designed to be easy to understand, use and reach. Additionally, drivers will be pleased with Paseo's black on white face instrument panel gauges which are easy to read.

Optional Power Windows and Door Locks

Paseo passengers can enjoy the convenience of optional power windows and door locks.

- A **passenger-side assist grip** helps make entry/exit easier.
- **Dual remote-controlled outside mirrors** are easy to adjust.
- The **AM/FM ETR Radio with 4 speakers** provides excellent sound and listening pleasure.
- The **remote fuel lid and trunk releases** aid access.

Features and Benefits

Styling



KEY FEATURES

Sporty and Youthful Exterior

Impact Absorbing Color-Keyed Bumpers

Optional Polycast Wheels

New Convertible Model

Optional Removable Sunroof¹

BENEFITS

The Paseo features a sporty, youthful design and better aerodynamics.

The first line of protection in a collision, Paseo's bumpers match the body color of the vehicle and flow smoothly into the hood and fenders for a clean and stylish appearance.

Provide the look of alloy wheels yet are less expensive.

Equipped with a manually-operated black vinyl top with a glass rear window, this new model provides a stylish and sporty, open-air drive.

Provides the exhilaration of open air driving with the top removed. Can also be tilted up for ventilation. Comes with a sunshade.

Rear Design

The rear of the Paseo has the following attributes:

- There is a smooth, stylish connection of the rear window to the trunk.
- Oblong rear combination lamps and bumper emphasize a wide, stable look.
- An air spoiler shape has been integrated into the trunk lid for sporty appeal.
- The Toyota logo in the center of the rear deck lid hides the trunk keyhole for a smoother look.

Impact-Absorbing Color-Keyed Bumpers

The first line of protection in the event of a frontal collision, the Paseo's bumpers match the body color of the vehicle and utilize super-olefin polymer for reduced weight, improved scratch resistance and a smoother finish.

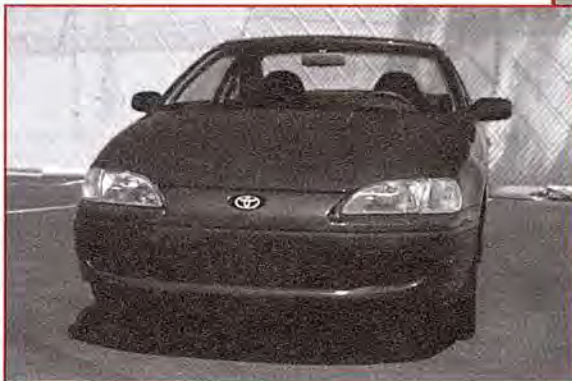
Flush-Mounted Glass with Black-Out Windshield and Roof Drip Molding

Flush-mounted glass helps reduce wind noise and aerodynamic drag. Combined with the black-out windshield molding, it also enhances Paseo's contemporary look.

Exterior

Sleek, Youthful Style with Low Aerodynamic Drag

The Paseo features a modern design with crisp lines and vivid planes that accent a sporty character. The integration of the hood, bumper and headlamp shapes help reduce wind noise, provide a contemporary appearance, and help reduce the coefficient of drag to .31.



Shown with optional rear spoiler

¹ Coupe models only

Features and Benefits



Close-Fit Body Panels

Tight tolerances between body panels **help provide the Paseo with reduced wind noise and an almost seamless look.**



Closely fitted body panels make the Paseo appear almost seamless.

Optional Polycast and Alloy Wheels

The Paseo offers optional polycast wheels that **have the look of alloy wheels** yet are less expensive.

The optional alloy wheels provide Paseo with an even sportier, upscale look.



Alloy wheel shown



Manually-Operated Convertible Top

Paseo's new convertible top option is easy to use and operate. When up, **its solid structure and glass back window provide excellent noise suppression for a convertible vehicle.** When down, the Paseo turns into an all-out, fun-in-the-sun sports machine.

Interior

Instrument Panel Ergonomics and Appearance

Paseo's ergonomics **provide an inviting environment for drivers.** The instrument panel features driver- and passenger-side airbags as well as **black on white face gauges, designed to enhance readability—day or night.** Audio and ventilation controls are positioned close to the driver for easy reach, as are new rotary heater controls.



Sporty Interior Appearance

The black on white face gauges and the sport seats give the interior a sporty appearance. The center console has a high-quality look and feel, and extends between the front seats. The rear of the center console has a storage tray for tapes and compact discs. It can also hold a 12-oz. can for rear passengers.

Optional Removable Sunroof¹

The Paseo features an optional sunroof that **can be tilted up for ventilation, or completely removed for the exhilaration of open air driving.** The sunroof comes with a sunshade to help keep the vehicle's interior cooler "on demand".

¹ Coupe models only

Features and Benefits

Quality/Dependability/Reliability and Value



KEY FEATURES

Rust Inhibitor Process

Gold-Plated Electrical Connectors

Knock Control System (KCS)

Toyota Warranties

BENEFITS

A multi-step process that helps the body panels resist rust and maintain their like-new appearance.

Superior electrical conductors that resist corrosion and oxidation.

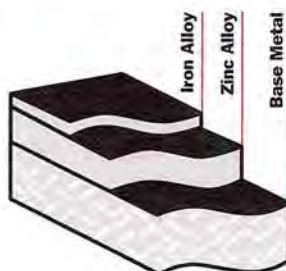
Helps reduce detonation or "pinging" by retarding spark timing when a sensor detects the need for it.

Stand behind each product we sell.

Dependability

Each Vehicle Goes Through An Extensive Rust Inhibitor Process

- The body is fully dipped in a **phosphate bath** to make sure that even the most inaccessible areas resist rust.
- **Wax and hemming sealer** help protect panel surface edges, hinges and joints and other areas of the body against moisture penetration.
- **Anti-chip paint** is applied to the front edge of the hood and rocker panels to help protect these areas from stone chips and other minor road debris.
- Each Paseo starts with **rust-resistant Galvanealed and Excelite II steels** coated with a zinc and iron alloy. These are used for most inner and outer body panels. If a small scratch occurs, the Excelite II simply causes the paint to turn white and helps protect the metal from rusting.



Rust-resistant body panels

Reliability

Gold-Plated Electrical Connectors

Gold, one of the best electrical conductors, **resists oxidation and corrosion, thus greatly improving reliability.** These expensive terminals are used in vital circuits such as the fuel injection computer, oxygen sensor, and air bag sensor.

Knock Control System (KCS)

This system **helps reduce detonation or "pinging"** by adjusting the spark timing. The engine computer retards the spark timing when a sensor detects "pinging," **helping provide smoother power and better fuel economy.**

Electronic Fuel Injection (EFI)

Paseo's fuel injection system is managed by a sophisticated computer that precisely controls when each injector opens and closes. This **improves startability on cold days, and helps lower emissions and provide better fuel economy.**

Warranty

Toyota stands behind every Paseo with a comprehensive limited warranty:

- 3 years or 36,000 miles (whichever comes first) of **basic coverage.**
- 5 years or 60,000 miles (whichever comes first) of **powertrain coverage.**
- 5 years unlimited mileage of **corrosion coverage.**

Toyota dealers have the complete details on warranty coverage.

Features and Benefits



Value

IntelliChoice Value Accolades¹

IntelliChoice is an independent company that publishes The Complete Car Cost Guide. This publication, available in many libraries, reports, analyzes and rates cost of ownership data. They provide the following assessments of the Paseo:

Projected Ownership Cost Savings vs Average

Paseo

\$970*

*Approximate savings based on annual mileage of 14,000 miles for 5 year ownership period.



Projected Repair Costs

- Rating: Excellent
- For Paseo, over 5 years

Drivetrain Warranty

- Rating: Excellent
- For Paseo, over 5 years

¹ From the 1996 edition of The Complete Car Cost Guide™, Copyright 1996 IntelliChoice, Inc.®, Campbell, CA.
Internet Address <http://www.intellichoice.com>

Air Bags, Dual (SRS)

In vehicles equipped with an air bag Supplemental Restraint System (SRS), the air bag inflates with nitrogen gas within milliseconds to help limit the motion of the driver's head and upper torso to help prevent injury in a severe frontal impact. This system supplements, but does not replace, the 3-point seatbelt system, which provides primary protection. The air bag is not intended to operate during an impact other than a severe frontal impact, in which case the 3-point system is the only personal protection. In a severe frontal impact, the center main sensor senses the impact and activates the air bag system. The air bag, which emerges from the steering wheel pad, then deflates within a few tenths of a second.

The passenger-side air bag is usually incorporated into the top part of the passenger-side instrument panel. This air bag emerges from an air bag module that can usually be replaced without replacing the entire instrument panel. This bag is slightly larger than the driver-side air bag and is also designed to help limit the motion of the passenger's head and torso in case of a severe frontal impact.

Assist Grips

Handles mounted on the inside roof of the Paseo, above the side passenger window. They provide a convenient place to grasp and gain leverage for entering and exiting the vehicle.

Automatic Transmission Shift Lock

This safety device requires that the ignition is on and the brake pedal is depressed before the transmission lever can be moved into gear.

Axle Ratio

The number of times the driveshaft rotates to turn the axle shaft one rotation. For example, if the driveshaft gear had 10 teeth and the axle shaft gear had 30 teeth, the driveshaft gear would have to turn three times to turn the axle shaft gear once. This translates to a ratio of three-to-one (3:1).

CFC-Free Air Conditioning

Vehicle air conditioning system that uses R-134a refrigerant instead of CFC-based chemicals (usually known as Freon).

Clutch Start Switch

This device in manual transmission equipped vehicles prevents the vehicle's starter motor from engaging unless the clutch is depressed. This prevents the vehicle from starting while in gear.

Compression Ratio

A measurement of how tightly the air-fuel mixture is compressed or squeezed within the cylinder by the piston. This can be determined by taking the total volume of the cylinder when the piston is at its lowest point (Bottom Dead Center, or BDC) and dividing it by the volume when the piston is at its highest point (Top Dead Center, or TDC). In general, higher compression ratios yield greater power.

Convertible Top, Manually-Operated

Paseo's new convertible top option is easy to use and operate. When up, its solid structure and glass back window provide excellent noise suppression for a convertible vehicle. When down, the Paseo turns into an all-out, fun-in-the-sun sports machine.

Crumple Zones

These exist at the front and rear of a Paseo to help absorb the impact of a collision. These pre-stressed areas in the fender, hood, frame and related body components are designed to deform in a predetermined manner during a collision. Their purpose is to lessen the forces the impact transfers to the passenger compartment. In essence, the crumple zone of a vehicle deforms first to help protect the occupants.

Double Overhead Cam (DOHC)

An engine configuration with two overhead camshafts per row of cylinders. One camshaft operates the intake valves and the other operates the exhaust valves. This is the usual arrangement in engines with multi-valve cylinder heads. Compared to single overhead cam designs, the direct drive used in all Toyota DOHC engines requires fewer moving parts. It eliminates the rocker arm needed to activate the valves, thus improving efficiency and reducing vibration and noise. Compared to push-rod overhead valve (OHV) engines, which use an arrangement by which the camshaft is located in the engine block and opens the valves via long push-rods and rocker arms, it eliminates the need for both of these components. With fewer moving parts, there is less inertia. So, an overhead cam engine can run at a higher speed and produce more power than a comparably sized push-rod engine.

Electronic Fuel Injection (EFI)

A system that injects fuel into the cylinders that is timed and metered by an electronic control unit.

ELR/ALR 3-Point Seatbelts

The ELR (Emergency Locking Retractor) allows the driver seatbelt to extend and retract with occupant movement, yet locks the belt during a sudden stop or upon impact. The ALR (Automatic Locking Retractor) makes it possible to secure a child seat without using a seatbelt locking clip. To activate the ALR retractor, pull the shoulder belt all the way out, then allow it to retract to the desired length. Press down firmly on the child seat as the belt retracts to buckle the child seat securely in place. The ALR retractor is deactivated by unbuckling the belt and allowing it to retract fully. Do not use a rearward-facing child seat in any front passenger seat. See Owner's Manual for child seat usage.

Halogen Headlamps

Headlamps with special bulbs that provide brighter illumination than conventional bulbs, yet last longer and use less energy. They get their name from the halogen gas inside the bulb.

Horsepower

The measurement of the ability to do work over time. One horsepower is the amount of energy needed to raise 33,000 pounds a distance of one foot in one minute. Simply put, it is the engine performance rating that helps an engine maintain and maximize vehicle speeds.

Hydraulic Shift Pressure

Automatic transmissions operate by fluid pressures to engage and disengage the transmission's gears from the engine.

Independent Suspension

Each wheel of an independent suspension is sprung separately so that a bump affecting one does not affect the others.

MacPherson Strut

An independent suspension unit consisting of a coil spring and a shock strut. (A shock absorber is inside the strut.) The compact design allows efficient space utilization while providing a smooth, comfortable ride with good handling.

Overdrive Transmission

Overdrive provides a final drive ratio of less than 1:1. This allows the engine to operate at lower rpm at highway cruising speed and provides greater fuel economy, quieter operation, and less wear and tear on the engine. It also helps a vehicle maximize top end speed.

Passenger Window Lock-Out System

When used, this optional system disables the passenger windows from being operated by anyone except the driver.

Rack-and-Pinion Steering

Consists of a round pinion gear attached to the steering shaft, and a flat bar with gear teeth cut into it, called the rack. The rack and pinion mesh at a point between the front wheels. As the steering wheel is turned, the shaft from the steering column turns the pinion gear, forcing the rack either right or left along a horizontal plane. The rack is linked to the wheels via tie rods, which push and pull the wheels to steer them. In general, rack-and-pinion steering is precise and responsive.

Safety Glass (Laminated)

Used in Paseo windshields, it consists of two glass panes bonded together with a sheet of plastic sandwiched in between. This keeps the glass together during an impact, reducing injuries from sharp edges.

Safety Glass (Tempered)

This heat-treated glass used in side and rear windows breaks into small blunt pieces when broken.

Safing Sensor

A sensor in a vehicle's air bag system designed to prevent inadvertent deployment.

Side-Door Beams

Required in all passenger cars by the Federal Government, these are steel beams inside the door that deflect certain types of side impacts. They help protect passengers from intrusion in a side collision. Paseo features Twin Side-Door Beams for extra protection.

Torque

A force in a twisting motion. In an engine, torque is the twisting motion at the crankshaft measured in foot-pounds (lb-ft). One foot-pound is the force of one pound acting at right angles at the end of an arm one foot long. Simply stated, torque is the engine power that gets a vehicle to speed — felt especially at off-line take-off and during acceleration. Torque is also important in getting heavy loads moving.

Glossary

Toyota Vehicle Intrusion Protection (V.I.P.)

An optional break-in alarm that flashes the headlamps and taillamps and sounds the horn when a secured vehicle is broken into. It also disables the starter if someone forcefully enters the car. The system is automatically armed by removing the ignition key from the ignition.

Two-Turn Door Locks

In a vehicle with this feature (including all Toyotas with power door locks), only the driver's door is unlocked when the key is turned in that door's lock. A second turn unlocks the other doors. This provides extra security in situations where the driver desires to open only one door, yet also allows the convenience of easily unlocking doors for all passengers.

Ventilated Front Disc Brakes

Vents in the brake rotors allow cooling air to pass through the hot discs. This helps reduce heat build-up and lessens the chance of the brakes fading, glazing or warping.

COPYRIGHT© 1996 TOYOTA MOTOR SALES, U.S.A., INC. ALL RIGHTS RESERVED. COPYING OR ANY OTHER REPRODUCTION, IN WHOLE OR IN PART, WITHOUT THE EXPRESS WRITTEN PERMISSION OF TOYOTA MOTOR SALES, U.S.A., IS STRICTLY PROHIBITED.

Toyota Motor Sales, U.S.A., Inc., by the publication and/or dissemination of this publication does not create any warranties, either expressed or implied, as to Toyota products. The information contained herein was up-to-date at the time of publication, but may subsequently be changed or added to without notice and without incurring any obligation. Reliance on this information creates no liability for Toyota.

This publication is produced solely for use as an informational sales aid. Toyota Motor Sales, U.S.A., Inc., its employees, representatives, and/or agents shall not be held liable for any omission of data or inclusion of erroneous data even where said omission is alleged to have been relied upon by a buyer of Toyota products. This publication and any material contained herein may not be reproduced without the prior written consent of Toyota's Training Department.

Any EPA fuel economy figures included in this publication are estimates to be compared with "estimated mpg" of other vehicles. Drivers may get different mileage depending on the speed they drive, weather conditions, trip length, condition of the vehicle and vehicle equipment. Mileage in actual driving will probably be less than EPA estimated fuel economy for highway driving.

RETAIL DEVELOPMENT
M/N 00623-97001-H

1 9 9 7 INTERIOR TRIM



PASEO

EXTERIOR	CODE	INTERIOR	CODE	COUPE CLOTH	CONVERTIBLE CLOTH
Super White	(040)	Gray	(15).....	■	■
Platinum Metallic	(1A0)	Gray	(15).....	■	
Satin Black Metallic	(205)	Gray	(15).....	■	
Super Red	(3E5)	Gray	(15).....	■	■
Coral Rose Pearl*	(3L9)	Gray	(15).....	■	
Sierra Green Metallic	(6N7)	Gray	(15).....	■	
Bright Turquoise Pearl	(756)	Gray	(15).....	■	■
Bright Iris Pearl	(8K9)	Gray	(15).....	■	

Notes:

*New for 1997

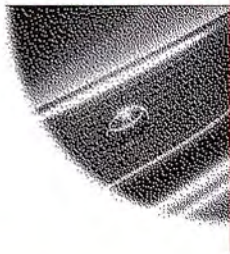
Paseo



Cloth

Gray (15)

1 9 9 7
EXTERIOR
COLORS



PASEO

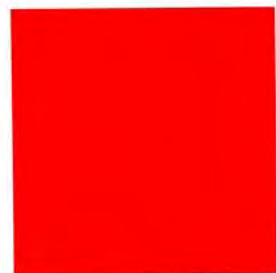
Super White (040)



Platinum Metallic (1A0)



Satin Black Metallic (205)



Super Red (3E5)



Coral Rose Pearl* (3L9)



Sierra Green Metallic (6N7)



Bright Turquoise Pearl (756)



Bright Iris Pearl (8K9)

Notes:

*New for 1997

