

2001 MERCEDES-BENZ

CL-Class

THE CL500 COUPE IS A V-8 POWERED VISION OF LUXURY AND POISE.

While the CL-Class is irresistibly seductive from the outside, its beauty and elegance extend deep within. An aerospace-inspired body structure and the amazing Active Body Control (ABC) system sparkle with advancing brilliance. The CL500's leading-edge 302-hp engine inspires scintillating performance. All to be savored in a cabin featuring sumptuous old-world comfort in seamless integration with sheer technological genius.

Behold the power of forward thinking.



IN THE ETHER OF EXOTIC MOTORING, NO STAR SHINES BRIGHTER.

Introducing the new CL 600 Coupe, a masterpiece of automotive design and Mercedes-Benz craftsmanship. It surges forward on the wings of an all-new V-12 engine, as creamy smooth as it is fiercely powerful. Inside, a leather-lined sanctum warmed by an abundance of hand-worked wood trim provides comfort and convenience of the most exclusive nature. Indeed, in every respect, the CL 600 redefines the aesthetic ideal.



For an interactive experience of the CL-Class, log on to the web addresses you'll find throughout this brochure.

www.cl-class.MBUSA.com

THE CL500 V-8 ENGINE BLURS SCENERY, NOT AIR.

The leading-edge technology of this lightweight 302-hp 5.0-liter powerplant, including 3-valve-per-cylinder heads and sequential twin-spark ignition, helps it achieve Ultra Low Emission Vehicle certification nationwide. Which will enable you to enjoy the breathtaking benefits of its 339 lb-ft of peak torque starting at just 2,700 rpm with even greater satisfaction.

www.cl-class.MBUSA.com/performance

Tomorrow's performance has been moved up.

IT'S AN AUTOMATIC TRANSMISSION THAT LOOKS TO YOUR LEAD.

The intuitive electronic brain of the CL-Class 5-speed will adapt its shift points to your driving mood and tempo. Or you can exert manual-style control, nudging the lever sideways to downshift and allow upshifts.

A 12-VOICE CHOIR THAT SINGS ONE BEAUTIFUL SONG.

Notable features of the CL600's all-new V-12 powerplant include a two-piece die-cast alloy block and a magnesium intake manifold for light weight. Variable timing of all 36 of its valves to optimize cylinder charging. Sequential twin-spark ignition. And an advanced system that boosts efficiency by imperceptibly shutting down six cylinders when peak torque isn't needed. They add up to the most sophisticated V-12 engine we've ever created. And the fluid-smooth source of 391 lb-ft of torque, 362 hp and countless miles of exultation few drivers will ever know.

Sport a more muscular look.

THE CL-CLASS SPORT PACKAGE INCREASES YOUR DEFINITION. The Sport Package option puts a more athletic spin on an already impressive build. It features AMG-designed lower bodywork that includes an aggressive front air dam with mesh grilles in the air intakes, sultry side sills and a dramatically sculpted rear apron. And its imposing 18" AMG monoblock alloy wheels are staggered in width, wearing sharp-turning 245/45YR18 tires in front and asphalt-grabbing 275/40YR18 rubber in back for a highly energetic stance.



CL 500 shown with optional Sport Package and Parktronic system.

You'll be comfortable
with this point of view.

NO HANDCRAFTED DETAIL HAS BEEN OVERLOOKED.

Experts in their craft, Mercedes-Benz upholsterers hand-fit soft, aromatic leather to every CL-Class seat. Dashboard and doors are covered in finely stitched leather as well. The intricate grain of hand-polished wood, in chestnut or burl walnut to complement the leather color, warms the console, doors, shift knob and steering wheel.

ITS FRONT SEATS POWER-ADJUST 14 WAYS. AND MEMORIZE EACH ONE.

After you've powered your driver's seat to the perfect position, power-adjusted the steering column and outside mirrors, and set the inside mirror where you want it, you can enter all of the above into one of three memory settings. Then, if you ever let someone else drive your car, a mere push of a button will bring all your favorites back.

THAT OPEN-AIR FEELING IS NO ILLUSION.

It's an impression furthered by the pillarless design and expansive greenhouse. And four individual seats let you host three others in ample, stretched-out comfort.

WE NAMED IT SMARTKEY. AND IT JUST GOT SMARTER.

It can remotely operate the door locks, windows and sunroof. It has some of the most sophisticated security technology found in a car. And now, each individual SmartKey can recall its particular driver's preferences, from front-seat positions to steering-column and mirror adjustments. It even remembers the preferred climate-control settings.

THE BOSE BETA 2 IS THE ONLY SOUND SYSTEM WORTHY OF THIS CAR.

Bose® digital processing creates an acoustic profile based on your choice of audio atmospheres. Bose AudioPilot™ modifies the sound profile, not merely the volume, to maintain consistently extraordinary audio quality. And among the eight speakers is an innovative 10" Nd™ woofer that'll knock the wind out of four ordinary woofers.




It might even exceed your dreams.



THE NEW CL600 ELEVATES THE CONCEPT OF THE LUXURY COUPE.

Everywhere you look, every surface you touch, every convenience that you experience in the CL600 confirms that this is truly an exotic—even among the elite. Leather virtually surrounds you, with lissome Nappa leather on the seats, dash and door panels. Suede-like Alcantara dresses the pillars and ceiling. Hand-polished wood trim graces the overhead console, doors, front and rear consoles, steering wheel, shift knob and rear-cabin control panel. Standard appointments include Active Ventilated front seats with eight tiny fans to circulate air around you. Dynamic multicontour front seats that precisely conform to you and even massage your back. And a voice-controlled audio system and digital telephone, so you can convey the height of your pleasure.





Do you see its strength?

Sometimes, it's what you don't see that means the most. The CL-Class is the only pillarless hardtop luxury coupe in production. Its hybrid body of aluminum, magnesium and steel builds enormous strength, yet helps a CL-Class weigh some 500 pounds less than its predecessor. And this latest edition features the open, uncluttered feel of our classic coupes. Simply because Mercedes-Benz believes that even the most timely demands of motoring can be made to coexist with timeless aesthetic ideals.

ITS INTELLIGENCE IS EASY TO SEE.

COMAND, the Cockpit Management and Data system, integrates the controls for the radio, tape deck, CD changer and the new Motorola Timeport™ portable digital phone¹ into one central panel. COMAND also helps you find your way: Its standard navigation mode uses the satellites of the Global Positioning System and a CD-ROM map database. The large color-LCD screen can display navigation, audio and phone information instantly and seamlessly, thanks in part to a fiber-optic network that links the components of COMAND. Our new Tele Aid Info Services² bring news, weather and stock updates from the Internet to your car at the touch of a button. And when your CL-Class is equipped with the digital telephone, you can control numerous phone and audio system features with your voice. Or use the controls on the steering wheel, and let your thumbs do the talking.

www.cl-class.MBUSA.com/innovation

IT KEEPS A CLOSE EYE ON COMFORT.

With a network of sensors, the CL-Class dual-zone climate control system has all the data it needs to provide the optimum comfort for you and your passengers. Interior temperature is measured in two places. The system keeps track of air quality in the cabin and—to avoid overly dry air—its humidity. It also monitors the direction of sunlight and even seat-belt usage. Then the system adjusts the temperature and flow of the filtered air automatically, to enhance each individual's climate.

GO AHEAD. LOSE YOUR KEY.

With the Keyless Go option,³ you can unlock your CL, start the engine, drive, turn it off again and lock the car—all by touch. And all without a key. A credit-card-sized transponder in a pocket or a purse tells your CL it's you. It's just that simple.



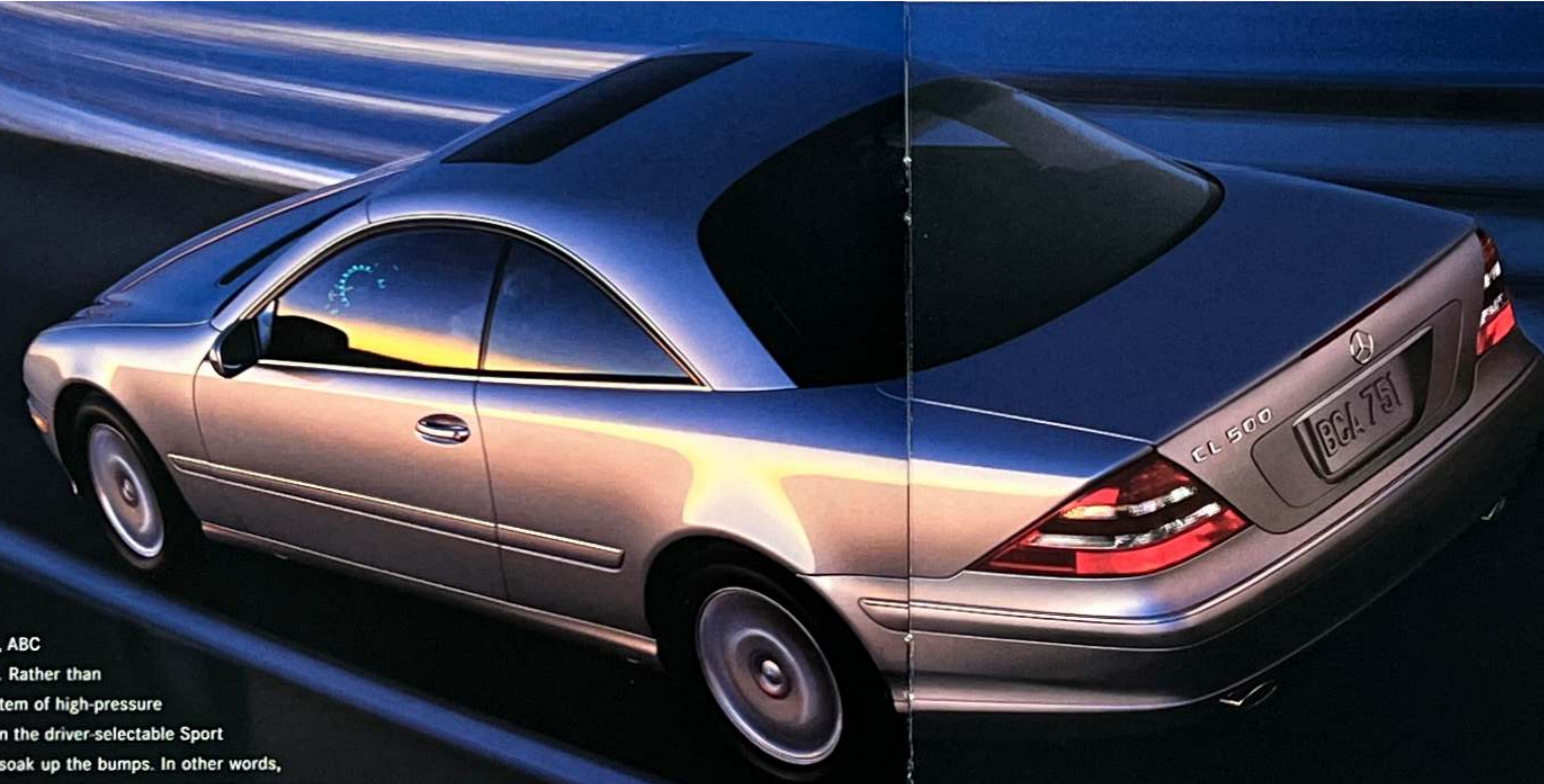
It lets you focus on driving.

¹ Phone standard on CL 600, optional on CL 500 and CL 55 AMG. ² Requires basic Tele Aid subscription. See your retailer. ³ Delayed availability. See your retailer. CL 500 shown with optional Parktronic system and Package CL3.

It makes the earth appear flat.

THE CL-CLASS ERASES THE UPS AND DOWNS OF DRIVING.

Active Body Control revolutionizes suspension engineering. The only active suspension on the market, ABC helps keep the car's body level during even the most spirited acceleration, cornering and stopping. Rather than merely rolling with the punches like a conventional suspension, ABC's electronically controlled system of high-pressure hydraulics actively and instantly counteracts leaning, diving and other undesirable motions. And in the driver-selectable Sport mode, body roll is virtually eliminated. All the while, highly compliant springs and shocks help soak up the bumps. In other words, the age-old compromise between taut, high-performance handling and a luxuriously comfortable ride has been made all but obsolete.



ESP HELPS MAKE PROBLEMS VANISH.

Ever run across some slippery pavement? Has your favorite twisty road ever thrown you a curveball? This is where the Electronic Stability Program shines. If your CL-Class diverges from the course you intend, ESP® helps to counteract plowing or fishtailing by braking individual wheels or reducing excess engine power to restore stability. ESP's immediate response keeps the CL going where you point it, with you in command and on top of the world.



No system, regardless of how sophisticated, can repeal the laws of physics or overcome careless driving actions. Please always wear your seat belt.

In our uncertain world, this car's brains and brawn are visionary.

YOU'LL FIND IMMENSE STRENGTH IN ITS BEAUTY.

The same elegant engineering that allows us to exceed our stringent structural standards in rollover tests while keeping that clean, pillarless roof design is evident throughout. Such innovations as its triple-layer roof pillars, die-cast magnesium door shells, aluminum/steel laminates and advanced body geometry add up to one tough coupe.

WE'VE BEEN CRUMPLING ZONES FOR 50 YEARS.

Our invention just keeps getting better. For instance, the CL's ellipsoidal front bulkhead helps to distribute some of the forces of an impact over, under and around the cabin.

IT'S HARD TO WATCH. ESPECIALLY FOR THE 28TH TIME.

To help ensure it's ready for the real world, the CL-Class – like all of our new models – has been subjected to a brutal regimen of no fewer than 28 crash tests, more than any nation's laws require.

www.cl-class.MBUSA.com/safety

CL 500 shown with optional Parktronic system and retailer-installed accessory 18" two-piece alloy wheels.



EVEN ITS BRAKES ARE THINKING AHEAD.

The CL-Class brings things to a quick halt with big 4-piston Brembo calipers working on ventilated, cross-drilled brake discs up front. Twin-piston calipers with ventilated discs are at the rear. Antilock brakes help you to retain steering control during heavy braking. And our Brake Assist helps overcome a common tendency not to brake hard enough, soon enough, by applying full boost during panic stops.¹

WE PRACTICE RESTRAINT IN A BIG WAY.

The CL-Class comes with eight air bags, including our innovative Head Protection Curtains. The rear side-impact bags are a first in a 2-door. All four seats have 3-point seat belts with our Emergency Tensioning Retractors to instantly remove slack in a severe front or rear impact. And our standard front seat-belt force limiters help distribute peak impact energy between the belts and the front air bags.²



¹ Braking effectiveness also depends on proper brake system maintenance, and tire and road conditions. ² WARNING: THE FORCES OF A DEPLOYING AIR BAG CAN CAUSE SERIOUS OR FATAL INJURY TO A CHILD UNDER AGE 13. THE SAFEST SEATING POSITION FOR YOUR CHILD IS IN THE REAR SEAT, BELTED INTO AN APPROPRIATE, PROPERLY INSTALLED CHILD SEAT, OR CORRECTLY WEARING A SEAT BELT IF TOO LARGE FOR A CHILD SEAT. A CHILD UNDER 13 MUST NOT USE THE FRONT SEAT UNLESS THE CHILD IS BELTED INTO AN APPROPRIATE, PROPERLY INSTALLED BABYSMART-COMPATIBLE CHILD SEAT. A CHILD UNDER 13 WHO IS TOO LARGE FOR A CHILD SEAT MUST NOT USE THE FRONT SEAT. SEE OWNER'S MANUAL FOR ADDITIONAL WARNINGS AND INFORMATION ON AIR BAGS, SEAT BELTS AND CHILD SEATS. BabySmart is a trademark of Siemens Automotive Company. Photograph of air bags is for illustration purposes only. Front air bags, once inflated, begin to deflate immediately to provide a cushioning effect. The side-impact air bags and Head Protection Curtains remain inflated after deployment.



CL55 AMG shown with optional Parktronic system.

Presenting our latest exercise of power.

THE CL55 AMG RAISES LUXURY COUPE PERFORMANCE TO AN ART FORM.

For years, Mercedes-Benz racecar maker AMG has been turning out machines for the street that feature awesome amounts of muscle. And the CL55 AMG¹ is no exception. Its 349-hp V-8 produces a prodigious 391 lb-ft of torque and a 0-60 time of just 5.7 seconds.² The CL55 AMG projects an athletic appearance, too, with its sculpted lower bodywork and polished 18" AMG monoblock alloy wheels. And when you slip into the CL55 AMG's dynamic multicontour front seats, buckle up and take off, you may find this to be one work of art that really can take your breath away.

¹ Availability of CL55 AMG is delayed. See your retailer. ² Stated rate of acceleration is based upon manufacturer's track results and may vary depending upon model, environmental and road surface conditions, driving style, elevation and vehicle load.





Here's a glimpse at some benefits beyond the car.

We're committed to making your ownership experience the best you've ever had. To that end, we think you'll find that our people are like our cars—responsive, genuine and friendly. Our Client Assistance Center is open 24 hours a day, every day, for information, accessories or roadside assistance. Just call 1-800-FOR-MERCEDES. Our response will be swift, considerate and complete. Below are some of the most significant benefits of owning a Mercedes-Benz. Besides driving it, of course.

Mercedes CARE
SUPPORT & SERVICE

MERCEDES CARE WARRANTIES.

The New Vehicle Limited Warranty runs 48 months or 50,000 miles, whichever comes first. And you can opt for an Extended Limited Warranty as well. See your retailer for all the details.

24-HOUR ROADSIDE ASSISTANCE.

Mercedes-Benz Roadside Assistance is good for as long as you drive your CL. And with our Sign and Drive service, we'll bring you some fuel if you run out, install your spare or jump-start your car at no cost.²

MERCEDES-BENZ MAINTENANCE COMMITMENT.

During the 4-year/50,000-mile New Vehicle Limited Warranty, routine maintenance called for by the car's Flexible Service System won't cost you a thing—not even a penny.¹

ALTERNATE TRANSPORTATION AND MORE.

Mercedes-Benz retailers are committed to getting you where you need to go when your car's in for service.³ Trip Interruption Reimbursement is designed to keep you on the move, too.⁴

¹ Maintenance need is determined by Flexible Service System, and wear items are not covered. Please see your retailer. ² Roadside Assistance repairs may involve charges for parts, service and towing. Depending on circumstances, these services may be provided by an outside service, courtesy of Mercedes-Benz Roadside Assistance. ³ Terms, conditions and retailer participation may vary. See your retailer for details. ⁴ Qualifications and limitations apply. ⁵ Where cellular and Global Positioning System coverage are available. Subscription required for service, airtime and connection charges. First year's monitoring and connection charges plus 30 minutes airtime included at no cost with subscription. ⁶ Owner must authorize vehicle tracking and file a police report.

Within the car.

Using the buttons described below, the Tele Aid system on the CL-Class can put you in touch with the help you need – no phone required. You get the first year's monitoring and connection charges, plus 30 minutes of airtime, at no charge when you subscribe.³ Tele Aid can also convey troubleshooting data to our Roadside Assistance people to aid in diagnosing problems. And if your antitheft alarm is ever triggered, your car will tell us so that we can notify you. If the car has indeed been stolen, we can actually track its location.⁴ Plus, if you lock your key in your trunk, just call our Client Assistance Center and arrange for us to unlock your CL remotely.

THE SOS BUTTON: EMERGENCY RESPONSE.



The SOS button is your direct link to emergency response representatives who can alert local police, fire or paramedic services to your situation and location. And if an air bag or Emergency Tensioning Retractor deploys, the system initiates the SOS call automatically.

THE i-BUTTON: CLIENT ASSISTANCE CENTER.



The *i* stands for information of the Mercedes kind. This button connects you to our Client Assistance Center, where Mercedes experts can give you answers about your car, locate your nearest Mercedes-Benz Center, and much more – 24 hours a day, every day of the year.

THE WRENCH BUTTON: ROADSIDE ASSISTANCE.



Pushing the wrench button gives you a direct voice link with Mercedes-Benz Roadside Assistance. Your CL can tell us where you're located, what model and color you're driving, and even help us to diagnose problems. Just say the word, and help will be on the way in no time.

And surrounding the car.

www.MBUSA.com

Check out all the information, features and fun on our website: The latest pricing, new-car photos, racing news – and that's just for starters.

Plus, Mercedes owners get even more.

MERCEDES-BENZ CREDIT CORPORATION.

Advantageous, affordable and straightforward options like The First Class Lease™ and First Class Financing™ are user-friendly and can be customized to address your individual needs.



The Collection

From watches to wheels, and from windbreakers to wind deflectors, Mercedes-Benz personal and vehicle accessories are available from your retailer or from 1-800-FOR-MERCEDES.

www.cl-class.MBUSA.com/security

Features

OIL LIFE MONITOR

The Flexible Service System measures not just mileage, but how you drive and your motor-oil condition. It signals for maintenance only when really needed, helping save money, resources and time.

ARTICULATED HINGES

Notice how the CL-Class doors move forward as they swing open. This allows a more generous opening for easier entry and exit, even in tight parking spaces.

ANTITHEFT ALARM

The theft-foiling properties of the CL kick in as soon as you lock the car. There's even an angle sensor to help prevent towaway theft.

EASY-ENTRY SEATS

Just tip either front seatback forward, and the seat automatically power-glides forward to help make getting in and out of the rear seats a snap.



XENON HEADLAMPS

An electrified arc of xenon gas generates a light that's perceived more like natural daylight. The automatic leveling feature of the headlamps helps cut glare.

SELF-SNUGGING DOORS

Close either door or the trunk lid to the latch point, and the pneumatic assist mechanism in the CL-Class pulls it snug automatically.

STANDARD CD SOUND

The CL's 6-disc CD changer is concealed in the trunk, but you operate it from the in-dash COMAND center and steering-wheel controls. You can play discs and tracks in order or shuffle them at will.

HEAD RESTRAINTS

The front head restraints height-adjust automatically based on fore-aft seat position. The rear head restraints pop up when rear seat belts are buckled, and can be retracted by a button on the dash.

RAIN-SENSING WIPERS

The CL's intermittent wipers automatically adjust their frequency for you, based on the amount of rainfall that an infrared sensor detects on the windshield glass.

Options

POWER REAR SUNSHADE

When the sun blazes in, shade your rear passengers at a button's touch. The standard fine-mesh power sunshade helps maintain your rear view as it helps keep the cabin cooler.



ACTIVE VENTILATED FRONT SEATS

With this option,² each front seat contains eight miniature fans that circulate cooling air around you. Or if you desire soothing warmth, the seats offer two levels of heating.



ELECTRONIC TRUNK CLOSER

This optional feature allows you to power-close the CL's fully open trunk lid without touching it. Push a button in the cabin or inside the trunk, and the lid closes itself.



DYNAMIC MULTICONTOUR FRONT SEATBACKS

Using multiple air chambers, these optional front seats can adjust pneumatically to your idea of perfect support. They can even massage your lower back while you drive.²



MOTOROLA TIMEPORT DIGITAL PHONE

Dock this go-anywhere digital phone in its console cradle for hands-free operation and voice control of the phone and audio system. The dual-band Timeport™ offers a wider choice of service providers.⁵

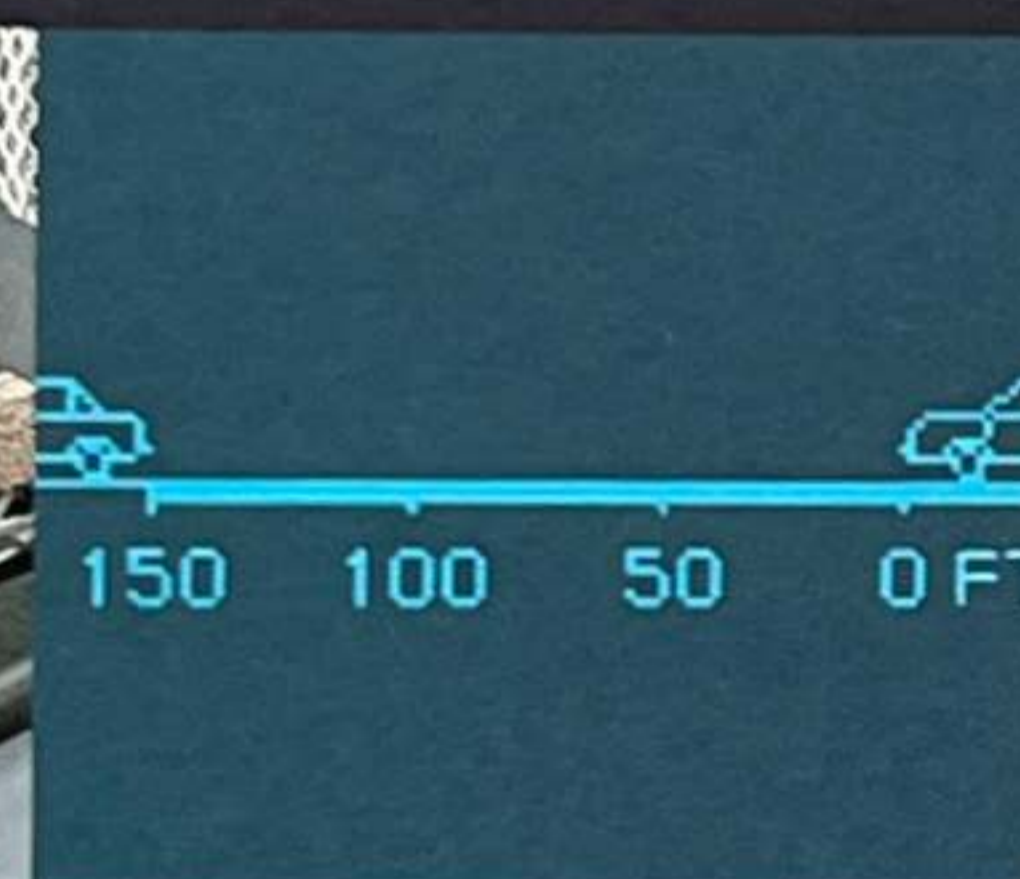


KEYLESS GO

Lock and unlock your car, start and stop the engine, and drive as you please—all without a key. With this option, all you need to do is carry a credit-card-sized transponder with you.¹

DISTRONIC ADAPTIVE CRUISE CONTROL

This option—the first adaptive cruise control—monitors the distance to the car ahead, to help maintain your speed and following range automatically.³



ONBOARD TIRE-PRESSURE MONITORING SYSTEM

This option monitors the air pressure and temperature of the four mounted tires, and alerts you via the in-dash message center if any tire is not within a specified range.⁴



PARKTRONIC SYSTEM

When parking, this innovative option uses sound waves in front and rear to help detect nearby obstacles. Audio and visual indicators alert you to objects that might not be within your line of sight.

¹ Delayed availability. See your retailer. ² Standard on CL55 AMG and CL600. Available on CL500 only as Option Package CL3. ³ DISTRONIC adaptive cruise control is no substitute for active driving involvement. It cannot recognize stationary objects, nor recognize or predict the curvature and lane layout of the road or the movement of vehicles ahead, and it can only apply a maximum of 20% of vehicle braking power. It is the driver's responsibility at all times to be attentive to traffic and road conditions, and to provide the steering, braking and other driving inputs necessary to retain control of the vehicle. ⁴ Not available on CL55 AMG. ⁵ Phone is standard on CL600. For safety reasons, we encourage the driver to stop the vehicle in a safe place before answering or placing a call. Always plug the phone into the cradle cord for use inside the vehicle. Operating a phone or radio transmitter with its own attached or built-in antenna while the engine is running can interfere with the vehicle's electronic systems.

STANDARD EQUIPMENT

EXTERIOR FEATURES

Power tilt/sliding **tinted glass sunroof** with one-touch express-open/close and memory. • **Infrared-reflective glass** helps reject radiant heat. Laminated side glass helps reject UV rays. • **Xenon High Intensity Discharge low-beam headlamps** with automatic level control, halogen high beams and front foglamps, and heated headlamp washers. Single red rear foglamp. • Driver-selectable light-sensing auto-on headlamps. Driver-programmable daytime running lamps. • Dual **heated power mirrors**, linked to driver's seat memory, with power fold-in. Auto-dimming left-side mirror. Parking-assist right-side mirror can tilt down upon shifting to Reverse. • Dual aero-blade windshield wipers with infrared rain sensor, heated washer system and heated wiper parking position.

CL55 AMG only: AMG-designed sculpted front air dam, side skirts and rear apron. Dual polished stainless steel exhaust tips.

LOCKING AND SECURITY

Remote central locking system with both infrared and radio-frequency signals for improved range, and rolling-code signal for protection from transmitter cloning. • **SmartKey** uses an electronic code to unlock the gearshift and ignition. Removing SmartKey from ignition disables the engine computer to help prevent unauthorized starting. • SmartKey transmitter integrates remote door lock/unlocking buttons, remote trunk opener with

valet lockout feature, removable valet key and panic alarm. • **User-recognition** allows up to three different SmartKeys to be assigned to a car, with each SmartKey linked to memory for driver's seat, mirrors and steering column, and various climate-control settings. • **Selective remote unlocking** of the driver's door and fuel filler, or both doors, trunk and fuel filler. • Illuminated entry system. • SmartKey remote opening/closing of windows and sunroof, plus actuation of Active Ventilated front seats, if equipped. • Automatic **antitheft alarm** system with towaway protection, remote panic feature, and automatic notification of Tele Aid response center. • **Driveaway locking** can lock all the doors when the car reaches 9 mph. • Programmable **night security illumination** uses the car's lights to help illuminate a path after parking. • Integrated 3-button garage door control, compatible with HomeLink® components and some other opener systems.

INTERIOR FEATURES

Multifunction steering wheel provides additional controls for basic audio, navigation and cellular phone functions; and to check odometers, **trip computer** and vehicle malfunctions in message center. • Power windows, all with **one-touch express-down** and with express-up for front windows. • Power **rear-window sunshade**, with one-touch express-up/down. • Tilt/telescoping **power steering column**, linked to driver's seat memory and with easy-exit feature. • Electronic cruise control. • **Auto-dimming**

rearview mirror, linked to driver's seat memory. • Automatic **low-intensity lighting** of the console, door handles and front footwells. Dual **xenon front reading lamps**. Courtesy lamps with programmable fade-out. Entrance lamps. • Dual illuminated vanity mirrors with magnifying lenses. • **Front center armrest** with illuminated, climate-controlled storage. Front and rear retractable dual cupholders. • **Rear center console** and folding armrest. • **Parcel net** in right front footwell. Seatback **magazine pockets**.

CLIMATE CONTROL

100% CFC-free **dual-zone automatic climate control** with adjustable vents in dash, doors and rear of console. Individual left and right controls for temperature and airflow direction, with dual automatic modes. • **REST mode** can use residual engine heat to help keep the cabin warmer for up to 30 minutes after the car is turned off. • **Electrostatic dust filter**. • Activated charcoal filter with **smog sensor**. Tunnel mode closes all windows, the sunroof and incoming air vents via the air-recirculation button or charcoal filter button. • 4-way **sun sensor** helps compensate for the effects of directional sunlight on the occupants. • **Humidity/dewpoint sensor** helps reduce window fogging during humid weather, and helps prevent overdrying of cooled air. • **Seat-belt sensors** allow climate control to focus first on seated occupants.

SEATING AND TRIM

Heated 14-way power front seats with pneumatic lumbar support and **3-position memory**. • Courtesy folding feature with obstruction sensor power-glides front seats forward for easier rear-seat access, then restores seat position. • **Hand-fitted leather upholstery** on dashboard, doors, armrests, seats, head restraints, steering wheel and shift knob. • **Chestnut or burl walnut wood trim** on doors, consoles, steering wheel, shift knob and shift gate. • Velour floor **carpeting** and floor mats.

CL55 AMG only: Dynamic multicontour front seats, with pneumatically adjustable seatbacks and active massage feature. • **Active Ventilated front seats** with internal fans plus heating.

CL600 only: Exclusive interior with **Nappa leather** seating; Alcantara pillars, visors and ceiling; and wood trim on overhead console and rear ashtray. • **Dynamic multicontour front seats**. • **Active Ventilated front seats**.

AUDIO, NAVIGATION AND COMMUNICATION

COMAND Cockpit Management and Data system integrates **navigation**, **radio** and **cassette**, plus **CD changer** and **phone controls**, with a 5" color-LCD screen. • **Fiber-optic network** offers precise, high-speed communication among components. • **8-speaker Bose® sound system** includes a dash-mounted

center fill speaker and a 10-inch Nd™ Neodymium Iron Boron high-efficiency woofer. • **Bose AudioPilot™** digital processing helps eliminate noise with no perceived change in audio volume. • Integrated trunk-mounted **6-disc CD changer**. • **Navigation system** uses Global Positioning System (GPS) satellites to pinpoint the current location of your car, and map databases on CD-ROM. • **Tele Aid** uses GPS to locate your car, plus a cellular link to provide 24-hour contact with Mercedes-Benz for emergency aid (SOS), information or Roadside Assistance. **Automatic Collision Notification** engages SOS function if an air bag or ETR deploys. **Automatic Alarm Notification** alerts Mercedes-Benz to contact you if the antitheft alarm is set off. Tele Aid also includes **stolen vehicle tracking**, and remote **keyless unlocking** service.¹

CL600 only: Integrated **Motorola Timeport™** dual-band portable digital cellular telephone with in-car **voice control system** for operation of common phone and audio system features.

INSTRUMENTATION

Electroluminescent analog speedometer, **tachometer** and **gauges** for fuel level and coolant temperature. Digital odometer, trip meter, clock and outside temperature indicator. Automatic illumination of displays and controls based on ambient light. • Alphanumeric **message center** can display odometers, trip computer, radio station or cassette/CD track, next navigation

instruction, programmable vehicle settings, plus reminder and malfunction messages. • **Flexible Service System** calculates and displays distance remaining to next routine maintenance service based on actual driving conditions and oil quality.

RESTRAINT SYSTEMS

Integrated Restraint System: Driver and front passenger are each provided with a front air bag, door-mounted side-impact air bag, and 3-point seat belt with Emergency Tensioning Retractor (ETR) and belt-force limiter. Front passenger's front air bag features dual inflation rates based on impact severity. Rear passengers are each provided with a side-panel-mounted side-impact air bag and a 3-point seat belt with ETR. • **BabySmart™** system automatically deactivates the passenger's front air bag when a BabySmart-compatible child seat is properly installed. Selectable passenger seat-belt retractors help secure child seats.² • **Head Protection Curtains:** In a sufficiently severe side impact, a multi-chamber air bag deploys to cover the front and rear side windows on the affected side of the car. • **Occupancy sensor** prevents front passenger's front and side-impact air bags from deploying if seat is unoccupied. An ETR will not deploy if the seat belt is unfastened. • Front **head restraints** automatically height-adjust as the seats move fore-aft (with power override). All four head restraints adjust fore-aft manually. Rear head restraints rise automatically when seat belt is fastened, and are driver-retractable.

SPECIFICATIONS

ENGINE

CL500: 4,966-cc SOHC 24-valve V-8 engine. 302 hp @ 5,500 rpm. 339 lb-ft torque @ 2,700–4,250 rpm. High-pressure die-cast alloy cylinder block, alloy heads. Engine management: ME 2.8. Compression ratio: 10.0:1. Emissions certification: Ultra Low Emission Vehicle (ULEV).

CL55 AMG: AMG-tuned 5,439-cc SOHC 24-valve V-8 engine. 349 hp @ 5,500 rpm. 391 lb-ft torque @ 3,150–4,500 rpm. High-pressure die-cast alloy cylinder block, alloy heads. Engine management: ME 2.8. Compression ratio: 10.5:1. Emissions certification: Low Emission Vehicle (LEV).

CL600: 5,786-cc SOHC 36-valve V-12 engine. 362 hp @ 5,500 rpm. 391 lb-ft torque @ 4,100 rpm. Two-piece high-pressure die-cast alloy cylinder block, alloy heads. Variable valve timing, sodium-filled exhaust valves. Engine management: ME 2.7. Compression ratio: 10.0:1. Emissions certification: Transitional Low Emission Vehicle (TLEV).

Intake system: Magnesium 2-stage resonance intake manifold increases runner length at lower rpm for improved response.

Fuel and ignition: Sequential multipoint fuel injection and phased twin-spark ignition with individual cylinder control of fuel spray, spark timing/phase and antiknock control. Two high-energy ignition coils and two spark plugs per cylinder, with 100,000-mile spark plug intervals. Electronically controlled throttle.

Fuel requirement: Premium unleaded, 91 pump octane.

Active Cylinder Control (CL600): Microprocessor-operated electromagnetic/hydraulic actuators imperceptibly deactivate the firing of the driver-side bank of cylinders when peak power is not required, for improved efficiency.

DRIVETRAIN

Transmission: Driver-adaptive electronic 5-speed automatic. Touch Shift allows driver to manually downshift and allow upshifts by nudging the shift lever side-to-side from Drive. Winter shift mode starts the car moving in 2nd gear or a special second Reverse gear to help improve takeoff on slippery surfaces. Display in instrument cluster indicates gear selection and shift mode.

Rear axle ratios:	CL500	CL55 AMG	CL600
	2.82:1	2.82:1	2.82:1

Electronic Stability Program: ESP® compares the driver's intended course, via steering and braking, to the car's response, via lateral acceleration, rotation (yaw) and individual wheel speeds. ESP then brakes individual front or rear wheels and/or reduces excess engine power as needed to help correct understeer (plowing) or oversteer (fishtailing). ESP incorporates the functions of ASR traction control, which senses drive-wheel slip and individually brakes the slipping wheel or wheels, and/or reduces excess engine power, until control is regained.

BODY AND CHASSIS

Body: Monocoque pillarless hardtop coupe with hybrid steel, aluminum and magnesium body.⁴ Composite front fenders and trunk lid. Advanced crumple zones. High-strength/low-alloy steel reinforcements in critical areas. Coefficient of drag: 0.28.

Suspension type: Independent 4-link front/5-arm multilink rear.

Active Body Control: ABC, a true active suspension system, utilizes a coil spring and an electronically controlled hydraulic cylinder in series, plus a separate gas-pressurized shock absorber at each wheel. Using a total system pressure of up to 2,900 psi, ABC continually adjusts each wheel's suspension to counteract vibration, pitch, dive, squat and roll. ABC also provides automatic

4-wheel level control, driver-selectable ride height control and gradual automatic lowering at higher speeds. Driver-selectable Sport mode virtually eliminates body roll for even flatter cornering and sharper handling response.

Steering: Rack-and-pinion with speed-sensitive power assist. 2.8 steering-wheel turns, lock-to-lock.

Brakes: Cross-drilled, ventilated front discs with 4-piston Brembo calipers. Ventilated rear discs with 2-piston calipers.

Electronic Brake Force Distribution promotes more even brake-pad wear by allowing for a greater rear-wheel contribution to straight-line braking compared to braking while cornering.

Antilock Braking System: ABS senses impending wheel lockup under heavy braking and pumps the front brakes individually or the rear brakes together (to help maintain stability) as needed up to 30 times per second to prevent lockup and maintain steering ability.

Brake Assist: Upon sensing emergency braking via the speed at which the driver presses the brake pedal, Brake Assist immediately applies maximum available power boost, potentially reducing the overall stopping distance by eliminating the delay caused by a common human tendency not to brake hard enough, soon enough. Letting up on the brake pedal releases Brake Assist. Braking

effectiveness also depends on proper brake system maintenance, and tire and road conditions.

WHEELS AND TIRES

CL500: 10-spoke cast aluminum alloy wheels, size 7.5Jx17. All-season performance tires, 225/55R17 97H.

CL55 AMG: Polished AMG monoblock cast aluminum alloy wheels, sizes 8.5Jx18 front and 9.5Jx18 rear. High-performance tires,⁵ 245/45YR18 front and 275/40YR18 rear.

CL600: Highly polished 6-hole forged aluminum alloy wheels, size 7.5Jx17. Performance tires, 225/55R17 97H.

Sport Package (optional on CL500 and CL600): AMG monoblock aluminum alloy wheels, sizes 8.5Jx18 front and 9.5Jx18 rear. High-performance tires,⁵ 245/45YR18 front and 275/40YR18 rear.

PERFORMANCE	CL500	CL55 AMG	CL600
Acceleration,⁶ 0–60 mph	6.1 sec	5.7 sec	5.9 sec

EXTERIOR DIMENSIONS

Wheelbase	113.6 in/2,885 mm
Overall length	196.6 in/4,993 mm
Overall height	56.0 in/1,423 mm
Overall width	73.1 in/1,857 mm
Track (f, r)	62.1 in/1,577 mm, 62.1 in/1,578 mm

Turning circle: 37.7 ft/11.5 m, curb-to-curb.

Curb weight 4,115 lb/1,865 kg (CL500).
4,115 lb/1,865 kg (CL55 AMG).
4,312 lb/1,955 kg (CL600).

INTERIOR DIMENSIONS

Headroom (f, r)	36.9 in/936 mm, 36.8 in/935 mm
Legroom (f, r)	41.7 in/1,058 mm, 30.8 in/782 mm
Elbow room (f, r)	59.9 in/1,521 mm, 56.5 in/1,437 mm
Shoulder room (f, r)	59.3 in/1,505 mm, 54.6 in/1,387 mm
Cabin capacity	88.5 cu ft/2,506 liters
Cargo capacity	12.3 cu ft/348 liters

OPTIONAL EQUIPMENT

CL 500 OPTIONS

Package CL2—Sport Package: Staggered-width 18" AMG wheels and high-performance tires.⁵ Sculpted front apron, side sills and rear apron. • **Package CL3:** Active Ventilated front seats and dynamic multicontour front seatbacks. • **Distronic** adaptive cruise control. • **Parktronic** audio-visual parking assistance system. • **Keyless Go** vehicle entry and starting system.³ • Onboard **tire-pressure monitoring system**. • Electronic **trunk closer**. • Integrated Motorola Timeport dual-band **digital telephone with voice control system** (retailer-installed).

CL 55 AMG OPTIONS

Distronic adaptive cruise control. • **Parktronic** parking assistance system. • **Keyless Go** vehicle entry and starting system.³ • Electronic **trunk closer**. • Motorola Timeport **digital telephone with voice control system** (retailer-installed).

CL 600 OPTIONS

Package CL2—Sport Package: Staggered-width 18" AMG wheels and high-performance tires.⁵ Sculpted front apron, side sills and rear apron. • **Distronic** adaptive cruise control. • **Parktronic** system. • **Keyless Go** keyless entry and vehicle starting system.³ • Onboard **tire-pressure monitoring system**. • Electronic **trunk closer**.

1 Where cellular and Global Positioning System coverage are available. Subscription required for service, airtime and connection charges. First year's monitoring and connection charges plus 30 minutes airtime included at no cost with subscription.

2 **WARNING:** THE FORCES OF A DEPLOYING AIR BAG CAN CAUSE SERIOUS OR FATAL INJURY TO A CHILD UNDER AGE 13. THE SAFEST SEATING POSITION FOR YOUR CHILD IS IN THE REAR SEAT, BELTED INTO AN APPROPRIATE, PROPERLY INSTALLED CHILD SEAT, OR CORRECTLY WEARING A SEAT BELT IF TOO LARGE FOR A CHILD SEAT. **A CHILD UNDER 13 MUST NOT USE THE FRONT SEAT** UNLESS THE CHILD IS BELTED INTO AN APPROPRIATE, PROPERLY INSTALLED **BABYSMART-COMPATIBLE** CHILD SEAT. A CHILD UNDER 13 WHO IS TOO LARGE FOR A CHILD SEAT MUST NOT USE THE FRONT SEAT. SEE OWNER'S MANUAL FOR ADDITIONAL WARNINGS AND INFORMATION ON AIR BAGS, SEAT BELTS AND CHILD SEATS. BabySmart is a trademark of Siemens Automotive Company.

3 Delayed availability. See your retailer.

4 Due to the innovative materials and assembly procedures used in the production of the CL-Class, paintwork and body repairs should be performed only by a repair facility that has been certified by MBUSA as having the tools, equipment and training necessary to perform such repairs. MBUSA encourages its clients to exercise their right to choose a repair facility that is certified and recommended by MBUSA. Please call 1-800-FOR-MERCEDES for additional details.

5 Y-rated tires are optimized for performance driving and may provide slightly reduced ride comfort, increased tire noise and substantially increased treadwear compared to all-season tires. Please consider these factors when choosing a CL 500 or CL 600 with the Sport Package, or a CL 55 AMG.

6 Stated rates of acceleration are based upon manufacturer's track results and may vary depending upon model, environmental and road surface conditions, driving style, elevation and vehicle load.

STANDARD PAINT COLORS



040 Black



143 Glacier White



182 Almandine Black metallic



197 Obsidian Black metallic



257 Dark Turquoise metallic



347 Horizon Blue metallic



693 Desert Silver metallic



744 Brilliant Silver metallic

INTERIOR TRIM ^{7,8}



Charcoal leather, burl walnut wood



Java leather, chestnut wood

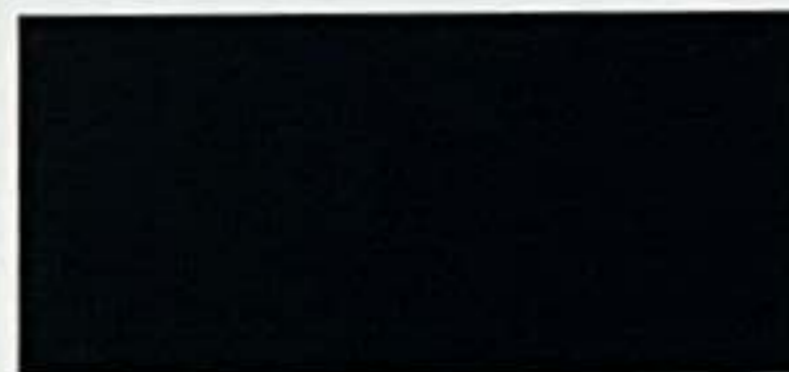


Oyster leather, chestnut wood



Ash leather, burl walnut wood

SPECIAL-ORDER PAINT COLORS ⁸



189 Black Opal metallic



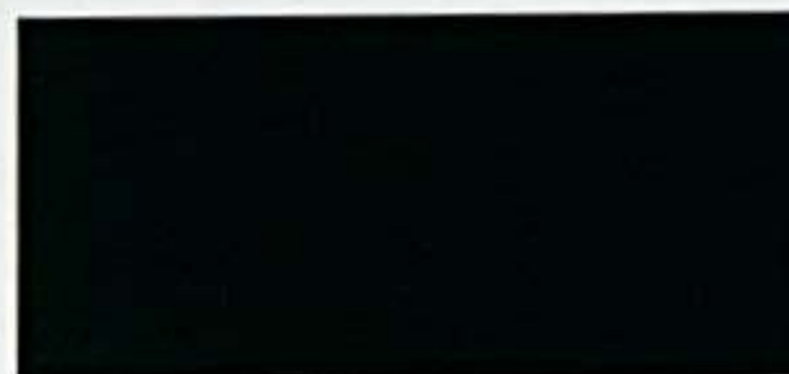
359 Capri Blue metallic⁹



567 Bordeaux Red metallic



753 Tectite Grey metallic



891 Aspen Green metallic



904 Midnight Blue



941 Wedgewood Blue metallic⁹

7 Burl walnut trim is available by special order with Java or Oyster leather. Chestnut trim is available by special order with Charcoal or Ash leather.

8 A one-time surcharge applies when any one or more special-order options or color combinations are ordered.

9 Delayed availability. See your retailer.

10 *designo* editions are optional on any CL-Class, and require Option Package CL3 on CL 500.

SILVER EDITION

029 *designo* Silver metallic paint



Natural Maple wood trim



Platinum Exclusive Nappa leather

designo EDITIONS

The *designo* editions¹⁰ fuse color, texture and ambience in a most sensuous way. Dramatic paint colors play with the light. Buttery, hand-selected Nappa leathers invite your touch, down to the borders of the floor mats. And hand-polished woods entice you with seemingly infinite depth.

Mocha Nappa leather



Natural maple wood trim



033 Mocha Black metallic paint

ESPRESSO EDITION



Mercedes-Benz

Mercedes-Benz USA, LLC
One Mercedes Drive
Montvale, NJ 07645
1-800-FOR-MERCEDES
www.MBUSA.com

Printed in U.S.A.
© 2000 Mercedes-Benz USA, LLC
A DaimlerChrysler Company
Marketing Communications MC-00-259-50

All illustrations and specifications contained in this brochure are based on the latest product information

available at the time of publication. Mercedes-Benz reserves the right to make changes at any time, without notice, in colors, materials, equipment, specifications and models. Any variations in colors shown are due to reproduction variations of the printing process. Illustrations may include test situations. Some vehicles may be shown with

non-U.S. equipment. Some vehicles are shown with optional equipment. HomeLink is a registered trademark of Prince, a Johnson Controls Company.



In an effort to minimize the environmental impact of this brochure, Mercedes-Benz uses a recycled coated paper that is guaranteed in writing to contain a minimum of 10% post-consumer waste.

