

# 6:30am



## Suddenly, you're a morning person.

The sun rises on a new day. What will your outlook be? How will you express it? **Can the car you drive make this day unlike any other?** Enter the 2003 E-Class. It might not change your life. Then again—and we say this with all seriousness—it just might.

Here are two sedans designed expressly to redefine what a car should be. Swift, with up to 302 hp.<sup>1</sup> Smart, with the world's first electronic brakes ever in a sedan.

<sup>1</sup> E 500 Sedan.

Satisfying, with a cabin that invites your touch and rewards your eyes. Secure, from our latest safety innovations to its historically strong value. Sensitive, with climate control that continually filters the cabin air. Surprising, with a sleek, coupelike profile that veils a roomy, luxury sedan interior. And sophisticated, with a European performance personality and the elegance of a European diplomat. The new E-Class is the experience of a very new day.

THE **2003 E-CLASS** CAN  
TRANSFORM YOUR TYPICAL  
DAY INTO AN EXPERIENCE  
ALL ITS OWN.



E 320 Sedan.



Today, the new power symbol is...power.

Can there really be such a thing as too much power? Maybe. But lack of power is much worse, forcing you to make compromises on where to merge, when to pass, and how best to avoid trouble. There's no such problem with the E-Class, thanks to the choice of a responsive **3.2-liter V-6** or a muscular **5.0-liter V-8**. It's personal power, too, with an adaptive accelerator and 5-speed automatic transmission that reads your driving style to give you custom-tailored performance. For sporty driving, the **adaptive accelerator** offers quick response to the pedal, while cruising gets a more relaxed response for a smoother drive. The **driver-adaptive 5-speed automatic transmission** also adjusts its shift points accordingly. For added fun, **Touch Shift** control lets you make manual-style downshifts and allow upshifts by tapping the shift lever left or right from the Drive position.

**E 320 ENGINE** As impressive as **221 horsepower** is, it's just as important to know that the E320's 3.2-liter V-6 offers its **232 lb-ft of peak torque** at just 3,000 rpm for strong acceleration off the line and around town. Using a two-stage resonance intake manifold allows deeper breathing for vigorous high-end performance. And you can breathe easy as well, knowing that the twin-spark ignition and 3-valve-per-cylinder design help the E320 attain **Ultra Low Emission Vehicle (ULEV)** status.

**E 500 ENGINE 302 horsepower.** Do we have your attention yet? And while the E500's 5.0-liter V-8 certainly provides robust performance, it's power that's easily applied. The variable intake manifold adjusts at low speeds for good low-end response, and then optimizes engine breathing for maximum power at higher revs. Mean and clean, the V-8 employs three valves per cylinder for quicker catalyst warm-up, and twin-spark ignition to provide more complete combustion. The result is the rare combination of snap-to-attention responsiveness and certification as an **Ultra Low Emission Vehicle**.

7:34 am



WITH **E-CLASS PERFORMANCE**, OBJECTS IN THE REARVIEW MIRROR ARE HISTORY.



E 500 Sedan shown with optional Distronic cruise control, Package E2 and Sport Package.



# A Ph.D. in indulgence.

At first glance, the E-Class is simply sumptuous. But with some advanced study, you'll find that these features are as thoughtful as they are attractive. You sit in the comfort of supportive **10-way power front seats** with leather seating inserts (premium leather covers the E500 seats and door trim, and is optional on the E320) and take in hand-finished **burl walnut trim** on the dash-board, center console and doors. Subtle **chrome outlining** gives added elegance to gauges, switches and wood trim. At night, soft **ambient interior lighting** of the console, footwells and door handles soothes you. You'll notice that everything falls easily to hand, including the leather-wrapped **multifunction steering wheel** and leather and wood trimmed gearshift.

Practical as it is luxurious, you'll appreciate the variety of storage areas in the E-Class, including a handy **pop-open drawer** in the dash, perfect for sunglasses. There are compartments at the base of each front seat, including a first-aid kit on the passenger's side. The center armrest features two levels of enclosed storage, one of which is climate controlled. Need more? The rear center armrest provides dual cupholders and a lined compartment. And for maximum cargo-carrying, the **optional split-folding rear seats** – with ski sack – and **fold-flat front passenger seat** can create a flat floor capable of carrying objects nearly 10 feet long. It's just what the doctor ordered.

# 8:16<sub>am</sub>

THERE'S NOTHING BETTER THAN  
BEING ABLE TO RELAX IN THE  
**STYLE AND COMFORT** YOU DESERVE.

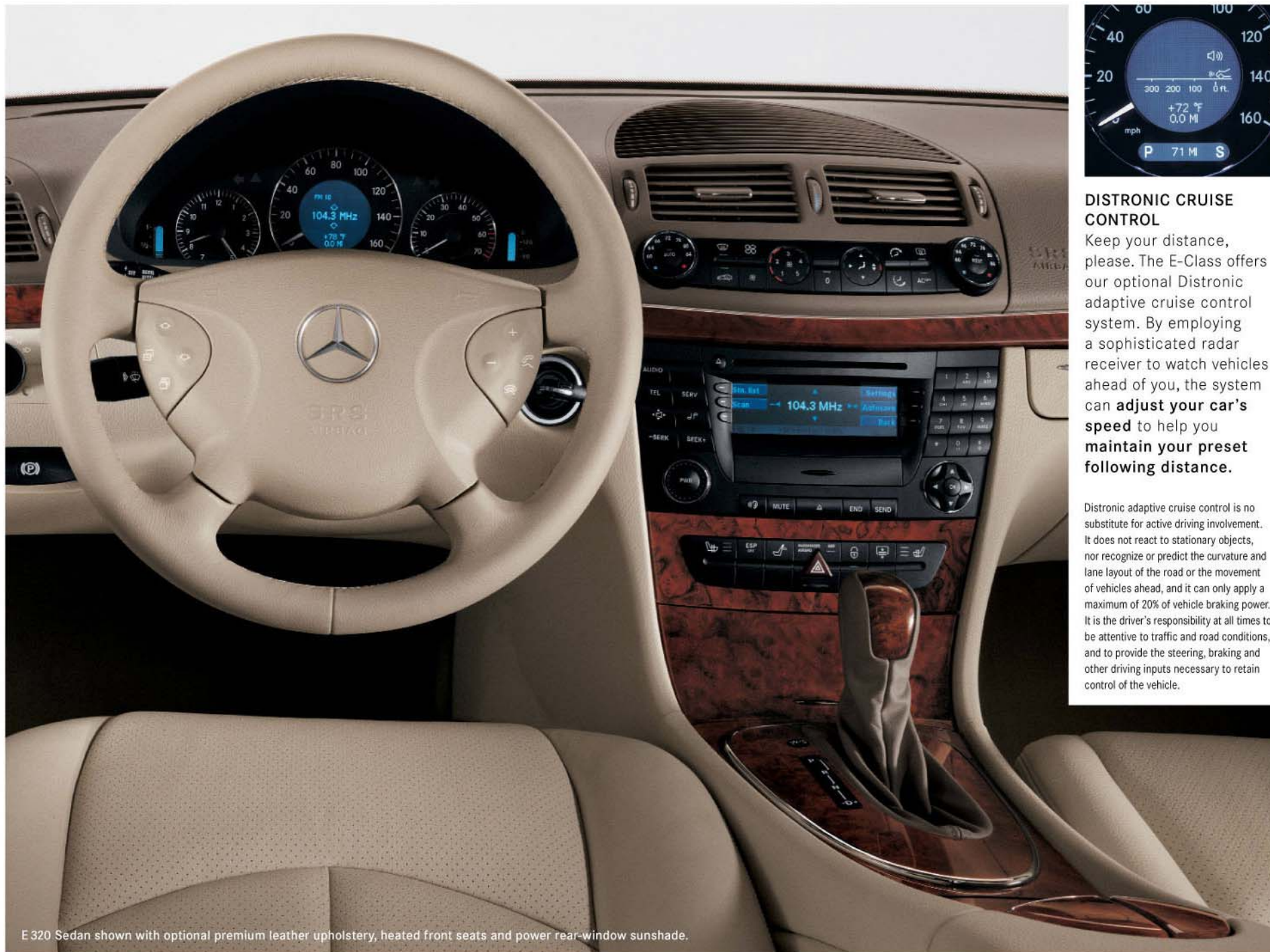


E500 Sedan shown with optional Active Ventilated front seats, Parktronic system, DISTRONIC cruise control and power rear-window sunshade.

- A. 10-way power front seats, each with 3-position memory
- B. Leather and wood trimmed gearshift
- C. Optional folding seat package







## DISTRONIC CRUISE CONTROL

Keep your distance, please. The E-Class offers our optional DISTRONIC adaptive cruise control system. By employing a sophisticated radar receiver to watch vehicles ahead of you, the system can **adjust your car's speed** to help you **maintain your preset following distance**.

DISTRONIC adaptive cruise control is no substitute for active driving involvement. It does not react to stationary objects, nor recognize or predict the curvature and lane layout of the road or the movement of vehicles ahead, and it can only apply a maximum of 20% of vehicle braking power. It is the driver's responsibility at all times to be attentive to traffic and road conditions, and to provide the steering, braking and other driving inputs necessary to retain control of the vehicle.

E 320 Sedan shown with optional premium leather upholstery, heated front seats and power rear-window sunshade.





IT MAY NOT SETTLE EVERY DEBATE,  
BUT **E-CLASS COMFORT AND 4-ZONE  
CLIMATE CONTROL** CAN SURE MAKE  
YOUR COMMUTE BETTER.



Multifunction steering wheel



Optional concealed in-dash  
6-CD changer



E500 4-zone climate control

2  
:3  
00 am

## Debate politics, not cabin temperature.

Everyone has a point of view, but inside an E-Class, it's easy to reach consensus. The climate control is a case in point: **Dual-zone controls in the E 320** let you choose sides when it comes to your preferred temperature. A **filtration system** helps keep irritating dust and pollen out of the conversation. A **humidity sensor** helps to keep the windows from fogging or the air conditioner from overdrying the air on warm days. **In the E500, 4-zone climate control** (an E320 option) lets you and your passengers get positively territorial: four of you can set your own temperature and airflow direction. Sun shining on the right rear passenger? The 4-way **solar sensor** tells the system to compensate automatically. And a **smog-sensing activated charcoal filter** helps arrest odors and keep some common pollutants from entering the cabin. You might find yourselves talking about something other than the weather for a change.

When you've had enough conversation, the standard **10-speaker audio system** includes a center fill speaker for balanced sound and a subwoofer for dynamic bass. For the audiophile, an optional **harman/kardon® Logic 7 digital surround sound system** specially designed for the E-Class "listens" to the sound in the cabin and compensates for unwanted noise automatically. Its 12 speakers are powered by nine separate amplifiers and include dual surround speakers. The **optional 6-CD changer<sup>1</sup>** is cleverly hidden behind a motorized panel in the central dash. Keeping things close at hand are controls on the steering wheel. They let you scroll the **multifunction display** to check the trip computer, program vehicle settings, or adjust the audio system, navigation system and phone.<sup>2</sup> And for a warm touch on chilly days, a **heated steering wheel** is optional.

<sup>1</sup> See your dealer regarding availability. <sup>2</sup> Navigation system (COMAND) is optional and availability is delayed. See your dealer. Phone is optional. For safety reasons, we encourage the driver to stop the vehicle in a safe place before answering or placing a call, or consulting the COMAND screen to read navigational maps, instructions, or downloaded information. While the navigation system provides directional assistance, the driver must remain focused on safe driving behavior, including paying attention to traffic and street signs, and should utilize the system's audio cues while driving. DVD-ROM maps do not cover all areas nor all routes within an area. Always plug the phone into the cradle cord for use inside the vehicle. Operating a phone or radio transmitter with its own attached or built-in antenna while the engine is running can interfere with the vehicle's electronic system.





ONCE YOU EXPERIENCE **SENSOTRONIC BRAKE CONTROL**, YOU'LL WONDER HOW YOU EVER DROVE WITHOUT IT.

8:52 am

E 320 Sedan shown with optional Panorama roof, solar-powered ventilation and power rear-window sunshade.

## Brakes that read the road, the weather, and your mind.

Braking tailored to your needs, the moment you need them. While others may talk about antilock brakes—which, by the way, we pioneered—only Mercedes-Benz features **electrohydraulic Sensotronic Brake Control**, and the E-Class is the world's first production sedan to offer such a groundbreaking system. Sensotronic automatically determines the most effective braking pressure to apply at each individual wheel. And that means superior control in various situations and on varying surfaces. The system observes how you're braking, for smoother stops during normal braking, or to help improve braking response when you need

to shed speed rapidly. Sensotronic is so advanced it actually **prepares to stop even before you touch the brake pedal**. Lift your foot quickly off the accelerator—as when something darts in front of your E-Class—and the system **primes the brake pads**, setting them closer to the discs, for even quicker response. The tenths of a second it can save may mean a huge difference in an emergency. To potentially shorten stopping distances even more, it's teamed with our **Brake Assist** system that instantly and automatically applies the maximum power brake boost should it detect emergency braking based on how quickly you depress the brake pedal.<sup>1</sup>

Sensotronic helps you in everyday driving situations as well. When braking in turns, the system can **vary the brake force to each individual wheel** for better handling and control—something no conventional brake system can do. As you come to a halt during normal braking, Sensotronic gently **modulates the brake pressure** for a chauffeur-smooth stop. And if the windshield wipers are on, Sensotronic takes note and imperceptibly applies the brakes periodically to **help keep them dry**. It's a feature you might not appreciate until the first time you need to brake on a rainy highway—and realize that the uneasy feeling of wet brakes has been banished.

<sup>1</sup> No system, no matter how sophisticated, can repeal the laws of physics or overcome careless driving actions. Please always wear your seat belt. Braking effectiveness also depends on proper brake system maintenance, and tire and road conditions.





1:00

pm STYLES MAY COME AND GO,  
BUT **E-CLASS VALUE** IS  
A BEAUTY THAT ENDURES.



E 500 Sedan shown with optional Parktronic system and Packages E1 and E2.

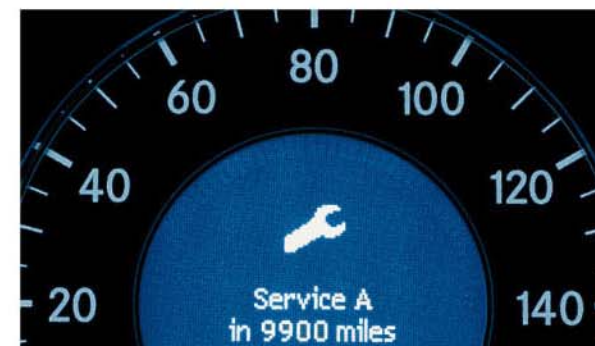
## High maintenance? You, maybe. Your E-Class? Absolutely not.

A full appointment book has little space for servicing your car. And although we do love to see you, we've actually taken great pains to reduce the time and expense you'll have to spend with us.

To start, **basic maintenance is included at no extra charge** for the duration of your New Vehicle Limited Warranty.<sup>1</sup> And so you won't have to worry about when to bring your E-Class in, its **Flexible Service System Plus** tracks your actual driving conditions, along with certain indicators of oil condition, and tells you via a display on the instrument cluster when basic service is due. It even tells you when your brake pads need replacing. And **our Roadside Assistance doesn't expire.**

Ever. If your E-Class (or any Mercedes) gets a flat tire, runs out of gas, or needs a jump start—now or ten years from now—we'll come to your aid.<sup>2</sup>

That's all on top of the **outstanding value** you get from the E-Class. It begins with an impressive list of standard features—many that you'll pay extra for on other vehicles. And innovations like Sensotronic Brake Control that you simply will not find on any other sedan in the world. Maybe someday others will offer some of them, but why wait for the imitators to catch up? And with the consistently high retained value of Mercedes-Benz products, you may also find that your E-Class pays you benefits when you sell it, too.



<sup>1</sup> Includes oil change and other standard use level maintenance items identified in the Service Booklet for each model, at intervals determined by the Flexible Service System throughout the warranty period. Brake pads and discs, tire rotation and wiper blades are not covered. Driver is responsible for monitoring fluid levels and tire pressures between service visits. Limitations apply. <sup>2</sup> Roadside Assistance repairs may involve charges for service and parts.



# An oasis of calm in an unsettling world.

When it comes to your protection, you want as much as possible. With advanced systems like our **Electronic Stability Program (ESP)**, **Sensotronic Brake Control** and **emergency-sensing Brake Assist**, your E-Class works hard to help keep you out of harm's way. But sometimes even that's not enough. On your worst day, you'll want an E-Class around you.

You're surrounded by an advanced body structure that uses special **high-strength/low-alloy steel**—not just here and there, but for nearly half of its total weight. There are sturdy crossmembers behind the dashboard and beneath each front seat. **Triple-layer A-pillars and C-pillars**. High-strength steel tubing in the B-pillars. Even the front suspension has been designed to help manage energy better in a frontal impact.

Inside, **eight air bags offer 10-way protection**. The dual front air bags inflate in two stages, based on the severity of the impact. There are also **side-impact air bags** for all four outboard occupants, and **Head**

**Protection Curtains** along the length of the side windows. **Emergency Tensioning Devices (ETDs)** remove slack from all four outboard seat belts in a sufficiently severe front or rear impact. And **dual-stage belt force limiters** help to distribute peak impact forces more evenly between the front seat belts and front air bags depending on impact severity.

A tribute to Mercedes-Benz safety engineering, the E-Class is the first sedan in the world to feature an integrated **rollover sensor**. If the sensor is triggered, the Head Protection Curtains deploy and the Emergency Tensioning Devices "cinch" all four outboard seat belts to help hold you in place.

**WARNING:** THE FORCES OF A DEPLOYING AIR BAG CAN CAUSE SERIOUS OR FATAL INJURY TO A CHILD UNDER AGE 13. THE SAFEST SEATING POSITION FOR YOUR CHILD IS IN THE REAR SEAT, BELTED INTO AN APPROPRIATE, PROPERLY INSTALLED CHILD SEAT, OR CORRECTLY WEARING A SEAT BELT IF TOO LARGE FOR A CHILD SEAT. **A CHILD UNDER 13 MUST NOT USE THE FRONT SEAT UNLESS THE CHILD IS BELTED INTO AN APPROPRIATE, PROPERLY INSTALLED BABYSMART-COMPATIBLE CHILD SEAT.** A CHILD UNDER 13 WHO IS TOO LARGE FOR A CHILD SEAT MUST NOT USE THE FRONT SEAT. SEE OPERATOR'S MANUAL FOR ADDITIONAL WARNINGS AND INFORMATION ON AIR BAGS, SEAT BELTS AND CHILD SEATS.

THERE ARE CERTAIN TIMES  
WHEN ONLY **THE BEST** WILL DO.  
THIS IS ONE OF THEM.



E500 Sedan shown with optional Distronic cruise control and Packages E1 and E2.



# It got its letters in handling.

Sometimes you want to waft along in the smooth ride of a luxury sedan. Other times you want to grab the road by the scruff of the neck and really drive. With a capital D. To do both in one vehicle, we recommend the E-Class. For precise handling, there's **speed-sensitive rack-and-pinion steering**, and **independent multilink suspension** at all four wheels. For added control while cornering, our Electronic Stability Program (ESP) helps keep you on your intended path. If the ESP sensors detect the E-Class deviating from your desired course — based on your steering and braking actions — the system responds by braking individual wheels or reducing excess power to help you regain control.<sup>1</sup>

To match its added power, the E 500 features innovative **Airmatic Dual Control semi-active air suspension** with ADS II adaptive damping (optional on E 320). At the touch of a button, you can choose from among **three settings — two for sport, one for comfort**. When cornering aggressively, the system automatically firms up the suspension to reduce body roll and enhance control. Airmatic DC also has an **automatic self-leveling** function — great when you're carrying heavy loads — and will also automatically lower the ride height at higher speeds for better control and improved aerodynamics. The driver can also raise or lower the ride height at a button's touch.

With the outstanding handling abilities of the E-Class, we recommend the **optional Drive-Dynamic front seats**. When this innovative new seating system senses a build-up of cornering force, it immediately shifts inflatable support to the outside bolster, giving more support to help hold you in place. For example, in a hard right turn, the left side of the seat firms up. Exit the corner, and the seat instantly returns to its original settings. It's like having an active suspension system that's built right into the seat, keeping you poised and in command through corners, instead of being tossed around by them.

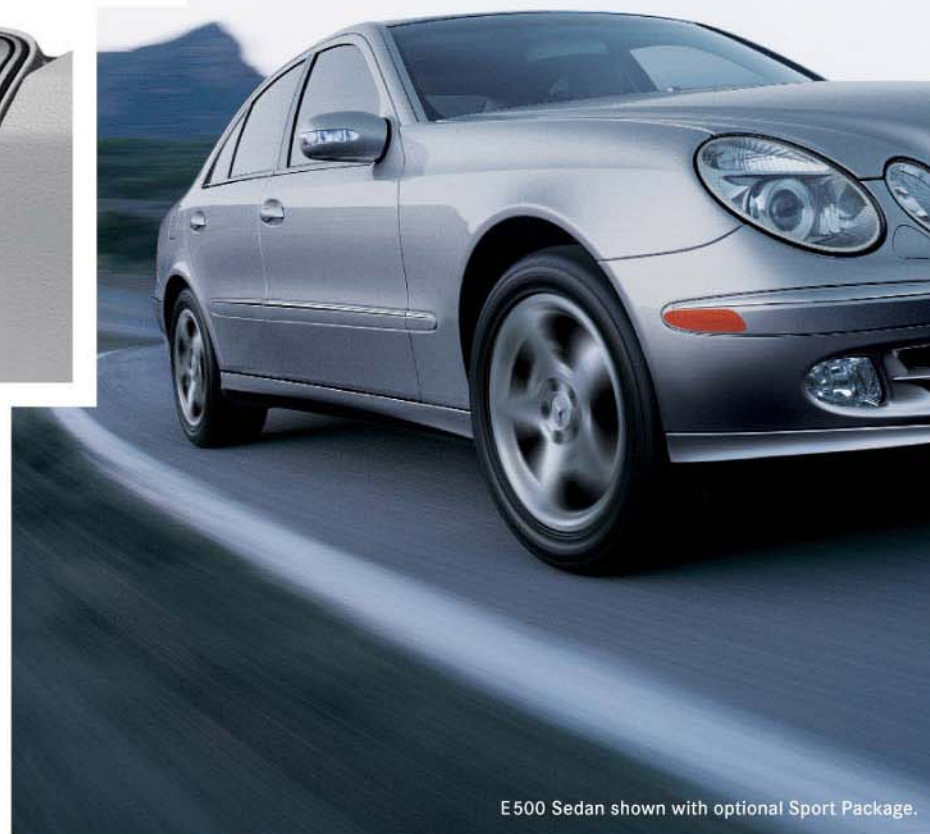
<sup>1</sup> No system, no matter how sophisticated, can repeal the laws of physics or overcome careless driving actions. Please always wear your seat belt.



"...THE E'S ASSORTED ACTIVE ELECTRONICS MANAGE TO TRANSPARENTLY BALANCE COMFORT WITH PERFORMANCE."

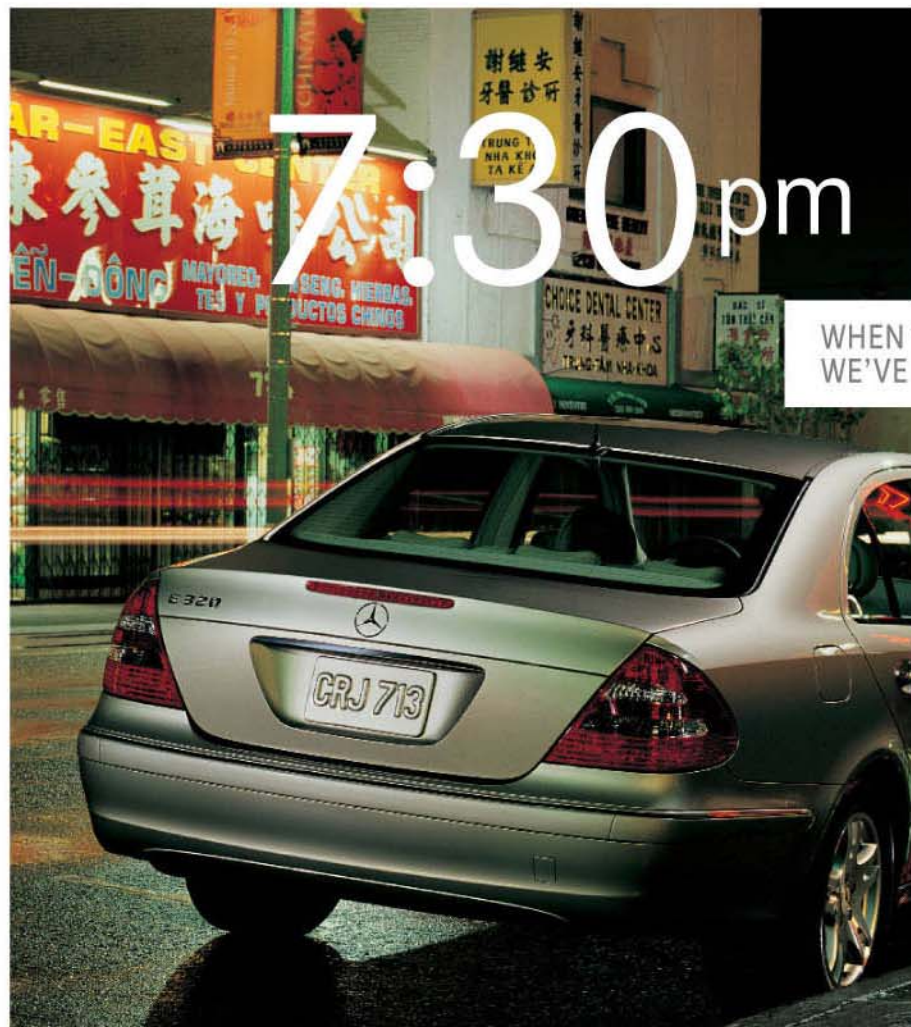
— ROAD & TRACK, 5/02

# 6:23<sub>pm</sub>



E500 Sedan shown with optional Sport Package.





WHEN YOU'VE GOT QUESTIONS,  
WE'VE GOT THE ANSWERS.

## Tele Aid: Your in-car connection to answers, assistance, and unforgettable Peking duck.

Pressing the **Tele Aid i-button** puts you in touch with Mercedes-Benz Customer Assistance Center staff who can help answer questions you might have about your E-Class. If a tire's flat, you're out of gas, or a warning indicator is lit, the **wrench button** comes to the rescue. Tele Aid can even transmit information that can help us diagnose problems remotely. If you need emergency assistance, press the **SOS button**, and emergency response personnel can detect your car's location and send help. And should an air bag or seat-belt Emergency Tensioning Device (ETD) deploy, **Tele Aid initiates the SOS call for you automatically.**<sup>1</sup>

Included at no extra cost with your Tele Aid subscription, our **Concierge Service** can make your life easier just by pressing one little **i-button**. Airline tickets? Hotel reservations? Maybe just a recommendation for a good restaurant? We've got you covered. Concierge Service can even send flowers and gifts—just another way your new E-Class makes you look good.

For ultimate convenience, the **optional COMAND-DVD** system combines the radio, **DVD-based satellite navigation**,<sup>2</sup> in-dash CD player, and controls for the **optional Motorola V60™ digital portable telephone**<sup>3</sup> into an integrated system. It's smart enough to mute the radio when you receive an incoming call, and will even pause a CD till you hang up. You can also operate items like audio volume, CD track, and cellular phone book, send and end commands via the multifunction steering wheel. And the available **voice control** option for the phone lets you operate the audio system and phone without even taking your thumbs off the wheel.



A.



B.



C.

- A. Tele Aid **i-button** and wrench button
- B. Tele Aid **SOS button**
- C. Optional **COMAND** with DVD navigation

<sup>1</sup> First year's Tele Aid service provided at no additional cost with subscription and includes 30 minutes of airtime (including required acquaintance call). Subscription is required for service to be active. Tele Aid operates only where cellular and global positioning system coverage are available.

<sup>2</sup> Availability of COMAND is delayed. See your dealer. While the navigation system provides directional assistance, the driver must remain focused on safe driving behavior, including paying attention to traffic and street signs. The driver should utilize the system's audio cues while driving and should only consult the map or verbal displays once the vehicle has been stopped in a safe place. DVD-ROM maps do not cover all areas nor all routes within an area. COMAND can play an audio CD in the DVD drive when not navigating. <sup>3</sup> For safety reasons, we encourage the driver to stop the vehicle in a safe place before answering or placing a call. Always plug the phone into the cradle cord for use inside the vehicle. Operating a phone or radio transmitter with its own attached or built-in antenna while the engine is running can interfere with the vehicle's electronic systems.





E500 Sedan.



THE **SPORT PACKAGE** WILL MAKE THEM STOP AND TAKE NOTICE. AND **PARKTRONIC** HELPS YOU TAKE NOTICE OF OBSTACLES WHILE PARKING.

## Attitude adjustment.

It's all about you. Take **SmartKey**, for example. It features remote locking, unlocking, trunk opener and panic mode. Press the button once, and only the driver's door and fuel filler unlock. Press it again, and all the doors unlock. You can also **open the windows and optional sunroof** to let hot air out of the car, or close them after you park. Smart, eh? To help illuminate your approach, integrated **entrance lamps** are provided in both the outside mirrors and interior door trim. And once you're underway, soft **environmental comfort lighting** of the console, door handles, ceiling and footwells gives a soothing ambience.

Beyond the plentiful standard features, the **optional Parktronic** audio-visual parking assistance system uses ultrasonic sensors in the front and rear bumpers to help detect objects below your line of sight in parking maneuvers. Displays on the dash and rear ceiling give you both audible and visual warning to the direction and proximity of the obstacle.

For some real attitude, consider the **optional Sport Package** for your E320 or E500. The interior features chrome-edged black birdseye maple wood trim, and a matte-chrome instrument cluster with ivory-color dials that are softly backlit blue at night. Outside, you're dressed to impress. Bi-Xenon headlamps with heated washers, a grille with five chrome ribs over black slats, and a sculpted aerodynamic front apron make a great first impression. Subtle side skirts, blue-tinted glass and 17" 5-spoke light-alloy wheels with 245/45WR17 high-performance tires<sup>1</sup> continue the story, while the sculpted rear apron and instantaneous response of all-LED brake lamps leave a lasting memory.

1 W-rated tires are optimized for performance driving and may provide reduced ride comfort, increased tire noise, substantially increased treadwear and greater susceptibility to damage compared with H-rated tires.

E500 Sedan shown with optional Parktronic system and Sport Package.

# 10:28 pm



- A. Sport Package 17" 5-spoke alloy wheel
- B. Overhead environmental lighting
- C. Sport Package interior, shown in E320





## E-CLASS OPTIONS

The right details can make a good day great or a great day even better. That's why we offer an exciting array of options for your E-Class. You can start your day by letting the sun shine in through a **power tilt/sliding tinted glass sunroof** with one-touch express-open. If you want to welcome an even bigger piece of sky into the E-Class cabin, the **Panorama glass roof**<sup>1</sup> gives you twice the view to the heavens as a conventional sunroof. Power mesh sunshades are included. And to avoid returning to a sweltering car in the summer, consider **solar panels** that create power via sunlight to ventilate the E-Class while it's parked and help keep the car cooler.

If you're the talkative sort, the sleek, ultracompact **Motorola V60™ digital portable phone** integrates seamlessly with your E-Class audio system, and offers optional voice control of many phone and audio features. The **Keyless Go** option lets you unlock your E-Class with a touch, start its engine, drive as you

please, stop the engine, and then lock the car—all without ever taking the SmartKey out of your pocket or purse. For your listening pleasure and convenience, we offer a **single-feed in-dash 6-disc CD changer**<sup>2</sup> and the delights of a **harman/kardon® Logic 7 digital surround sound system**.

**Airmatic Dual Control suspension** (standard on the E 500) allows your E 320 to carry you in sublime comfort on a cushion of air, while **Distronic adaptive cruise control** helps you maintain both selected speed and following distance to vehicles ahead. To help you avoid things that go bump in the parking lot, our **Parktronic** parking-assistance system uses both audio and visual alerts to warn you about obstacles that may be out of your line of sight.

<sup>1</sup> Limited availability. See your dealer. <sup>2</sup> Delayed availability. See your dealer.



F. In-dash 6-CD changer  
G. harman/kardon Logic 7 digital surround sound system



H. Parktronic system  
I. Airmatic Dual Control air suspension  
J. Distronic adaptive cruise control

A. Glass sunroof  
B. Panorama roof  
C. Solar panels

D. Integrated digital Motorola V60 phone  
E. Keyless Go



## E-CLASS OPTIONS

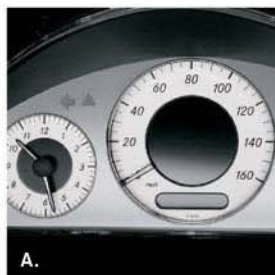
When your day turns to night, **Bi-Xenon low-beam and high-beam headlamps** cast a light that's perceived more like natural daylight. Day or night, there is nothing like the natural feel of a **wood and leather steering wheel**, or the warmth of a **heated steering wheel** on a cold morning.

<sup>1</sup> Requires Airmatic suspension and premium leather upholstery on E 320.

To stir a little extra attitude into your driving profile, the E-Class **Sport Package** adds 17" 5-spoke wheels, special lower bodywork, Bi-Xenon headlamps and interior enhancements.<sup>1</sup> For the true enthusiast, only **Drive-Dynamic front seats** will do. These innovative seats feature side bolsters that individually inflate and deflate quickly to balance you against the g-forces of hard cor-

nering. If your E-Class emphasis is on versatility, the **split-folding rear seats and fold-flat front-passenger seat** allow you to configure the sedan to a best-in-class pass-through of nearly 10 feet. **Active Ventilated front seats** can warm you or help keep you cooler. And when the heat is on, you can help keep it off your rear-seat passengers with a **power rear-window sunshade**.

- A. Sport Package instrumentation
- B. Sport Package black birdseye maple trim
- C. Sport Package lower bodywork
- D. Bi-Xenon headlamps with heated washers



A.



B.



C.



D.



E.

- E. Heated steering wheel
- F. Wood and leather trimmed steering wheel



F.

- G. Drive-Dynamic front seats
- H. Split-folding rear seats and fold-flat passenger seat
- I. Active Ventilated front seats and power rear-window sunshade



G.



H.



I.



# SPECIFICATIONS

## ENGINE AND DRIVETRAIN

	E 320 SEDAN	E 500 SEDAN
<b>Engine</b>	3,199-cc SOHC 18-valve 90° <b>V-6</b> . High-pressure die-cast <b>alloy cylinder block</b> , alloy heads.	4,966-cc SOHC 24-valve 90° <b>V-8</b> . High-pressure die-cast <b>alloy cylinder block</b> , alloy heads.
Net power	<b>221 hp</b> @ 5,600 rpm	<b>302 hp</b> @ 5,600 rpm
Net torque	<b>232 lb-ft</b> @ 3,000–4,800 rpm	<b>339 lb-ft</b> @ 2,700–4,250 rpm
Compression ratio	10.0:1	10.0:1
Fuel requirement	Premium unleaded gasoline, 91 pump octane.	Premium unleaded gasoline, 91 pump octane.
Fuel and ignition system	ME 2.8 engine management. Integrated <b>sequential multipoint fuel injection and phased twin-spark ignition</b> includes individual cylinder control of fuel spray, spark timing and phase, and antiknock. Electronic throttle includes <b>adaptive accelerator</b> , which provides more rapid throttle opening in response to the speed at which accelerator pedal is depressed. Two high-energy ignition coils and two spark plugs per cylinder, with 100,000-mile spark plug intervals.	
Intake system	Magnesium 2-stage <b>resonance intake manifold</b> increases intake runner length at lower rpm for improved response.	
Emission certification	<b>Ultra Low Emission Vehicle (ULEV).</b>	<b>Ultra Low Emission Vehicle (ULEV).</b>
<b>Transmission</b>	Driver-adaptive electronic <b>5-speed automatic</b> . <b>Touch Shift</b> allows driver to manually downshift and allow upshifts by nudging the shift lever left or right from the Drive position. <b>Shift into Optimum Gear</b> programming allows one-touch selection of the best gear for maximum acceleration by holding the shift lever to the left of Drive for one second. Driver-selectable <b>winter mode</b> starts vehicle moving in 2nd gear or a second Reverse gear, to help improve takeoff on slippery surfaces. Display in instrument cluster indicates selected gear range and standard/winter mode.	

## TRACTION AND STABILITY

<b>Electronic Stability Program (ESP) and Automatic Slip Control (ASR)</b>	ESP compares the driver's intended course, via steering and braking inputs, to the vehicle's response, via lateral acceleration, rotation (yaw) and individual wheel speeds. ESP then brakes individual front or rear wheels and/or reduces excess engine power as needed to help correct understeer (plowing) or oversteer (fishtailing). ESP incorporates the functions of <b>ASR traction control</b> , which senses drive-wheel slip and individually brakes the slipping wheel or wheels, and/or reduces excess engine power, until control is regained. <sup>1</sup>	
--	--	--

## CHASSIS

<b>Suspension type</b>	4-wheel independent. Front <b>4-link</b> design with antidive geometry and stabilizer bar. Rear <b>5-arm multilink</b> design with aluminum links and wheel-hub carriers, geometry for antisquat and alignment control, and stabilizer bar.	
<b>Steel spring and damping system</b>	<b>Front:</b> Coil-over struts with gas-pressurized monotube shock absorbers. <b>Rear:</b> Separate coil springs and gas-pressurized monotube shock absorbers.	Not available.
<b>Airmatic Dual Control air suspension with Adaptive Damping System (ADS II)</b>	Optional (required with optional Sport Package). <b>Airmatic Dual Control</b> is a semi-active suspension that provides greater ride comfort yet responds to reduce pitch, dive and roll during braking, accelerating and cornering by instantaneously firming up spring rates as driving dynamics change. Electronically controlled pneumatic spring-struts integrate variable-rate shock absorbers and coil springs. <b>ADS II</b> continually optimizes ride and handling by automatically selecting one of four damping profiles for each spring-strut every time a wheel changes its direction of up-down travel. Dual driver-selectable <b>Sport modes</b> engage firmer damping profiles either full-time or at lower thresholds of body movement, and lower ride height by 0.6 inch. <b>Automatic 4-wheel level control</b> includes driver-selectable ride height control to manually raise vehicle by 0.8 inch or lower it by 0.6 inch via selection of either Sport mode, and automatic speed-sensitive lowering to reduce the ride height by 0.6 inches at higher speeds. <sup>2</sup>	Standard.
<b>Steering</b>	<b>Rack-and-pinion</b> with speed-sensing power assist and integral hydraulic damper. 2.8 steering-wheel turns, lock-to-lock. Turning circle: 37.4 ft/11.4 m, curb-to-curb.	
<b>Wheels</b> , aluminum-alloy, standard with optional Sport Package	<b>Dual-spoke</b> design, <b>8.0J x 16</b> . <b>5-spoke</b> design, <b>8.0J x 17</b> .	<b>Dual-spoke</b> design, <b>8.5J x 17</b> . <b>5-spoke</b> design, <b>8.0J x 17</b> .
<b>Tires</b> , steel-belted radial, standard with optional Sport Package	<b>225/55R16 95H</b> performance. <b>245/45R17 95W</b> high-performance. <sup>3</sup>	<b>245/45R17 95H</b> performance. <b>245/45R17 95W</b> high-performance. <sup>3</sup>
<b>Brakes</b> , electronically controlled 4-circuit	<b>4-wheel disc</b> , front discs ventilated. 4-piston fixed-type front calipers.	
<b>Sensotronic Brake Control</b>	Sensotronic is an <b>electrohydraulic braking system</b> which transmits brake pressure individually to each wheel based on driver input and various vehicle parameters. Sensotronic <b>optimizes brake pressure at each wheel</b> during normal braking, emergency stopping and ESP activity. <sup>1</sup> <b>Soft Stop</b> precisely modulates brake pressure as the car approaches a stop during normal braking. <b>Automatic brake drying</b> applies the brakes lightly and briefly based on windshield wiper use and driver braking intervals, to reduce moisture on the brake surfaces in wet weather. <b>Predictive brake priming</b> sets the brake pads nearer the discs when the driver quickly releases the accelerator, for faster brake response.	
<b>Antilock Braking System (ABS) and Brake Assist</b>	<b>ABS</b> senses impending wheel lockup under heavy braking and pumps the front brakes individually or the rear brakes together (to help maintain stability) as needed up to 30 times per second, to prevent lockup and maintain steering ability. Sensotronic eliminates the pedal pulsation commonly associated with conventional brake systems and ABS. <b>Brake Assist</b> senses emergency braking via the speed at which the driver presses the brake pedal and immediately applies maximum available power boost, potentially reducing the overall stopping distance by eliminating the delay caused by a common human tendency not to brake hard enough, soon enough. Letting up on the brake pedal releases Brake Assist. <sup>4</sup>	

## DIMENSIONS

<b>Wheelbase</b>	112.4 in/2,854 mm	112.4 in/2,854 mm
<b>Overall length</b>	190.3 in/4,833 mm	190.3 in/4,833 mm
<b>Overall height</b>	57.0 in/1,449 mm	57.0 in/1,449 mm
<b>Overall width</b>	71.3 in/1,810 mm	71.3 in/1,810 mm
<b>Track, front—rear</b>	61.4 in/1,559 mm—61.1 in/1,552 mm	61.4 in/1,559 mm—61.1 in/1,552 mm
<b>Coefficient of drag</b>	0.27	0.27
<b>Curb weight</b>	3,635 lb/1,649 kg	3,815 lb/1,730 kg
<b>Headroom, front—rear</b>	37.4 in/951 mm—37.7 in/957 mm	37.4 in/951 mm—37.7 in/957 mm
<b>Legroom, front—rear</b>	41.9 in/1,065 mm—35.6 in/903 mm	41.9 in/1,065 mm—35.6 in/903 mm
<b>Shoulder room, front—rear</b>	56.4 in/1,432 mm—56.1 in/1,424 mm	56.4 in/1,432 mm—56.1 in/1,424 mm
<b>Cabin capacity</b>	97.2 cu ft/2,752 liters	97.2 cu ft/2,752 liters
<b>Cargo capacity</b>	15.9 cu ft/450 liters	15.9 cu ft/450 liters

1 No system, no matter how sophisticated, can repeal the laws of physics or overcome careless driving actions. Performance is limited by available traction, which snow, ice and other conditions can affect. Always drive carefully, consistent with conditions. Best performance in snow is obtained with winter tires. Please always wear your seat belt. 2 Please obey local speed laws. 3 W-rated tires are optimized for performance driving and may provide reduced ride comfort, increased tire noise, substantially increased treadwear and greater susceptibility to damage compared with H-rated tires. 4 Braking effectiveness also depends on proper brake system maintenance, and tire and road conditions.



## E 320 SEDAN E 500 SEDAN

### EXTERIOR FEATURES

- ● Atlas Grey grille with four chrome ribs and chrome surround.
- ● Variable-focus halogen headlamps with projector low beams and clear high-impact polycarbonate lenses.
- ● Halogen front foglamps, in front apron.
- ● Single red rear foglamp, integrated in driver's side taillamp cluster.
- ● Driver-selectable light-sensing headlamps can be set via the Auto position of the headlamp switch to automatically illuminate in darkness, or when entering dark tunnels or parking garages.
- ● Driver-programmable Daytime Running Lamps illuminate low-beam headlamps at reduced intensity (full intensity for optional Bi-Xenon lamps) in daylight, with auto-on override in darkness.
- ● Automatic lamp substitution uses a nearby lamp if a critical bulb fails.
- ● Touch Turn Signals flash three times with one touch of turn-signal lever, for lane-changing. Auxiliary LED turn signal indicators are integrated with side mirrors.
- ● Dual power mirrors, linked to driver's seat memory and automatically heated.
- ● Auto-dimming left-side mirror.
- ● Parking-assist right-side mirror can be programmed to tilt down upon shifting to Reverse.
- ● Electrically heated rear window with auto-shutoff based on time and outside temperature.
- ● Dual windshield wipers with aero wiper blades. Heated washer nozzles, lines and reservoir. Infrared rain sensor automatically adjusts wiper speed and intermittent wiper frequency from infinite delay to fast wiping speed based on amount of rainfall measured on windshield.

### LOCKING AND SECURITY

- ● SmartKey remote central locking system uses redundant infrared and radio-frequency signals for improved range, and rolling-code signal for protection from transmitter cloning.
- ● SmartKey uses an electronic code to unlock the steering column and ignition. Removing SmartKey from ignition disables engine computer to help prevent unauthorized starting of the engine.
- ● SmartKey remote control integrates door lock/unlock buttons, remote trunk opener, removable valet key and panic alarm. Driver may selectively unlock only the driver's door and fuel filler, or all doors plus the trunk and fuel filler.
- ● Driver-programmable user-recognition feature links each SmartKey to driver's preferences (up to three individual users per car). Each SmartKey recalls for its assigned driver: memory features for driver's seat, outside mirrors and power steering column position; vehicle configuration settings from multifunction display, including language, lighting modes and radio stations; plus various climate control settings.
- ● SmartKey offers infrared-remote opening/closing of windows (and sunroof, if equipped), plus activation of Active Ventilated front seats (if equipped) from outside the car.
- ● Driver-programmable driveway locking can automatically lock all the doors when the car reaches 9 mph.
- ● Night security illumination uses the car's exterior lights to help illuminate a path after parking. Driver-programmable intervals allow lights to stay on for 60, 45, 30 or 15 seconds, or not at all.
- ● Locator lighting uses the car's lights to help light a return path when the car is remote-unlocked in darkness. Unlocking car activates illuminated entry system, which includes interior lighting, entrance lamps in all four doors and underneath outside mirrors.
- ● Automatic anti-theft alarm system with towaway protection, remote panic feature, and automatic notification via Tele Aid system.<sup>1</sup>
- ● Emergency trunk release inside cargo area, illuminated for 60 minutes after trunk lid is closed.
- ● Integrated 3-button garage door control, compatible with HomeLink<sup>®</sup> components and some other systems.

● STANDARD ○ OPTIONAL — NOT AVAILABLE

## E 320 SEDAN E 500 SEDAN

# EQUIPMENT

### INTERIOR FEATURES

- ● Multifunction steering wheel provides convenient, additional controls for basic functions of audio system and optional phone, plus operation of multifunction display (see Instrumentation, on next page).
- ● Power windows, all with one-touch express-up/down.
- ● 4-way (tilt/telescoping) power steering column, position linked to driver's seat memory.
- ● Driver-programmable easy-entry/exit feature moves driver's seat rearward and/or raises steering column when key is removed from ignition.
- ● Electronic cruise control with digital speed readout in multifunction display upon engagement.
- ● Auto-dimming rearview mirror.
- ● Delayed-shutoff front and rear courtesy lamps. Entrance lamps in all four doors and outside mirrors.
- ● Four reading lamps.
- ● Dual sunvisors with illuminated vanity mirrors.
- ● Automatic environmental comfort lighting provides gentle ambient light while driving in darkness to the center console, door handles, all four footwells, and the front and rear seating areas. Front-cabin lighting offers six levels of intensity, while rear-cabin lighting offers variable intensity. Highest-intensity setting is automatically activated when a door is opened, to facilitate entry and exit.
- ● Front center armrest with dual enclosed and illuminated storage compartments. Lower compartment is climate-controlled.
- ● Illuminated 2-tier glovebox. Pop-open drawer in dash for sunglasses or other small items. Storage pocket with motorized wood-trimmed door behind central dash switch panel. Retractable dual front cupholder.
- ● Pockets in all doors. Parcel net in right front footwell.
- ● Magazine pockets on both front seatbacks.
- ● Rear center armrest with enclosed storage and slide-out dual cupholder.
- ● Illuminated, carpeted trunk with tie-down hooks.

### CLIMATE CONTROL

- — Dual-zone CFC-free automatic climate control with dual rotary temperature controls, automatic control of blower speed and airflow distribution (with manual override). Low-draft/high-volume dash-top diffuser vent. Rear-cabin air vents at rear of front console.
- ● 4-zone CFC-free automatic climate control with four individual digital temperature/airflow controls, and automatic control of blower speed and airflow distribution (with manual override). Activated charcoal filter with smog-sensing automatic recirculation of filtered cabin air. 4-way sun sensor. Rear-cabin operating panel with dual temperature controls plus controls for airflow direction and blower speed. Low-draft/high-volume dash-top diffuser vent. Rear-cabin air vents at rear of front console and adjacent to rear doors.
- ● Dust/pollen filter.
- ● Humidity sensor helps prevent window fogging and overdrying of cooled cabin air in warm weather.
- ● Tunnel mode offers one-touch closing of all windows (and sunroof, if equipped) via climate-control air recirculation button.
- ● REST mode can ventilate cabin or help keep cabin warmer using residual heat for up to 30 minutes after car is turned off.

### SEATING AND TRIM

- ● 10-way power front seats, each with 3-position memory and adjustable lumbar support. Driver's seat memory includes steering column and outside mirror positions. Memory stations are linked to each SmartKey's user-recognition feature.
- — Leather seating inserts.
- ● Premium leather upholstery on all seat surfaces (including head restraints and front seatbacks) plus gathered door trim inserts and door armrests.
- ● Leather-trimmed 4-spoke steering wheel and shift knob.
- ● Hand-polished burl walnut wood trim on doors, dash, console and shift knob.
- ● Polished chrome outlining for wood trim and switch clusters. Dimensional matte chrome touch points on various storage areas.
- ● Velour floor carpeting and floor mats.

<sup>1</sup> First year's Tele Aid service is provided at no additional cost with your subscription and includes 30 minutes airtime (including required acquaintance call). Subscription is required for service to be active. Tele Aid operates only where cellular and GPS coverage are available. Owner must authorize stolen vehicle tracking and file a police report.



## E 320 SEDAN E 500 SEDAN

### AUDIO AND COMMUNICATIONS

- 10-speaker audio system with 4-channel amplifier and automatic speed-sensitive volume adjustment.
- AM/FM stereo/weatherband radio with scan and dual-sensitivity seek tuning, plus single-CD player and concealed autoreverse cassette player with music search. In-dash audio system operating panel integrates controls and displays for radio, cassette player, CD player, optional in-dash 6-CD changer and optional portable digital telephone.
- Fiber-optic network offers precise, high-speed communication among components. Factory preparation for optional CD changer and cellular phone using fiber-optic network.
- Tele Aid uses GPS satellites to determine the current location of your car, plus a cellular link to provide 24-hour contact with Mercedes-Benz for emergency aid (SOS button), information (i-button) or Roadside Assistance (wrench button). Automatic Collision Notification engages SOS function if an air bag or Emergency Tensioning Device (ETD) deploys. Tele Aid also includes Automatic Alarm Notification (which alerts Mercedes-Benz to contact you if the anti-theft alarm is set off), stolen vehicle tracking, and remote keyless unlocking service.<sup>1</sup>
- Tele Aid Concierge Service, standard with basic Tele Aid subscription, offers personal services via the i-button, including arrangements for restaurant, hotel, airline or car-rental reservations, tickets to cultural and sporting events or tourist attractions, and delivery of flowers or gifts.<sup>1</sup>

### RESTRAINT SYSTEMS

- Integrated Restraint System: Driver and front passenger are each provided with a front air bag with dual deployment levels based on impact severity, a side-impact air bag, and a 3-point seat belt with an Emergency Tensioning Device (ETD) and dual-stage belt force limiter.<sup>2</sup> Outboard rear passengers are each provided with a door-mounted side-impact air bag and a 3-point seat belt with ETD and belt force limiter. Center rear passenger is provided with a 3-point seat belt.
- Head Protection Curtains: In a side impact exceeding a preset threshold, a multi-chamber air bag deploys to cover the front and rear side windows on the affected side of the car.
- Integrated rollover sensor automatically deploys the ETDs and Head Protection Curtains in the event of a detected rollover.
- Occupancy sensor prevents the front passenger's front and side-impact air bags from deploying if the seat is unoccupied. An ETD will not deploy if seat belt is unfastened.
- Automatic Collision Notification engages Tele Aid SOS function if an air bag or Emergency Tensioning Device (ETD) deploys.
- Universal LATCH system (Lower Anchors and Tethers for Children) at rear seating positions, as well as selectable seat-belt retractors at all passenger seating positions, help secure child seats.<sup>2</sup>
- Front seat belts include height-adjustable shoulder belts and lower points attached to seat frames. Outboard rear seat belts include automatically height-adjusting shoulder belts.
- 4-way adjustable front head restraints include automatic power height adjustment as seat is moved fore-aft (with power override). Three rear head restraints, all of which can be remotely retracted by the driver for improved rearward vision when the rear seats are unoccupied.

### INSTRUMENTATION

- Electronic analog speedometer, tachometer and quartz clock, all with white markings on black faces, glacier blue backlighting, and chrome rings. Electronic bar-graph fuel and coolant temperature gauges. Digital display for odometer and Touch Shift gear/mode selection.
- Multifunction display in speedometer face can be scrolled via steering-wheel controls to operate and display various menus and vehicle features:  
Odometer, resettable trip meter, and outside temperature indicator.  
Digital speedometer, Flexible Service System (see below), and engine oil-level check.  
Radio station, CD player/CD changer (optional), cassette player.  
Navigation system route guidance (optional).  
Distronic adaptive cruise control settings (optional).  
Vehicle reminder and malfunction messages.  
Trip computer (elapsed time, fuel consumption, distance to empty).  
Tire pressures (optional).  
Driver-programmable settings for instrument cluster, clock, lighting, vehicle and convenience features.  
Cellular phone book (optional).  
Numerous driver-programmed preferences are stored in each user's dedicated SmartKey.
- Flexible Service System Plus calculates distance remaining to next basic maintenance service based on actual driving conditions, some indicators of oil condition, and engine loads, rpm and operating temperatures. System also monitors brake-pad wear.

<sup>1</sup> First year's Tele Aid service is provided at no additional cost with your subscription and includes 30 minutes airtime (including required acquaintance call). Subscription is required for service to be active. Tele Aid operates only where cellular and GPS coverage are available. Owner must authorize stolen vehicle tracking and file a police report. **2 WARNING:** THE FORCES OF A DEPLOYING AIR BAG CAN CAUSE SERIOUS OR FATAL INJURY TO A CHILD UNDER AGE 13. THE SAFEST SEATING POSITION FOR YOUR CHILD IS IN THE REAR SEAT, BELTED INTO AN APPROPRIATE, PROPERLY INSTALLED CHILD SEAT, OR CORRECTLY WEARING A SEAT BELT IF TOO LARGE FOR A CHILD SEAT. **A CHILD UNDER 13 MUST NOT USE THE FRONT SEAT**

## E 320 SEDAN E 500 SEDAN

### INDIVIDUAL OPTIONS

- Airmatic Dual Control semi-active suspension with Adaptive Damping System (ADS II) and dual driver-selectable Sport modes.
- Keyless Go vehicle entry and starting system.
- Electronic trunk closer (via controls on driver's door and inside trunk lid).
- Distronic adaptive cruise control.
- Parktronic audio-visual parking assistance system.
- Onboard tire-pressure monitoring system. System monitors air pressure and temperature of all four mounted tires and can display inflation via multifunction display.
- Panorama roof, including full tinted glass roof from windshield to rear window, power tilt/sliding panel with one-touch express-open, and dual power internal sunshades. (Option is not available with Package E2, and availability is limited. See your dealer.)
- Solar-powered cabin ventilation system. Solar cells in roof help generate power to run ventilation system while car is parked in sunlight, to help keep interior cooler without draining vehicle batteries. (Option requires Panorama roof.)
- Power rear-window sunshade with one-touch express-up/down.
- Manual roller-type sunshades for rear-side windows.
- 4-zone automatic climate control.
- Heated front seats.
- Active Ventilated front seats (includes heating feature).
- Dynamic multicontour front seats with pneumatically adjustable side and lumbar supports, and massage feature which slowly pulsates the central lumbar support to help reduce muscle fatigue.
- Drive-Dynamic front seats. Inflatable side bolsters instantly respond to cornering forces by inflating and deflating to optimize cornering support. Also includes all features of dynamic multicontour seats.
- Heated steering wheel.
- Leather and walnut trimmed steering wheel.
- Premium leather upholstery on all seat surfaces plus head restraints and door trim inserts and armrests.
- harman/kardon® Logic 7 surround sound system with 12 speakers (including dual surround speakers and a subwoofer) and an 8-channel amplifier. System features multichannel digital surround-sound technology developed for the professional recording industry, to provide a natural and realistic sound stage. Digital Dynamic Volume Control helps preserve the sound balance under all driving conditions.
- Integrated single-feed 6-disc CD changer, concealed behind motorized wood-trimmed door in central dash switch panel. (See your dealer regarding availability.)
- COMAND-DVD integrated navigation system, radio and single-CD player/DVD-ROM drive.<sup>3</sup> In-dash navigation system uses GPS satellites to pinpoint the current location of your car, and map databases on a single DVD-ROM for all of the U.S. and Canada. (See your dealer regarding availability.)
- Integrated Motorola V60™ dual-band digital portable telephone.
- Integrated Motorola V60 dual-band digital portable telephone with voice control system for operation of commonly used telephone and audio system features.
- Metallic paint (no extra charge on E 500).

### OPTION PACKAGES

- **Package E1:** Bi-Xenon High Intensity Discharge projector low-beam and high-beam headlamps. Heated headlamp washers.
- **Package E2** (not available with Panorama roof): harman/kardon Logic 7 surround sound system. Power tilt/sliding tinted glass sunroof with one-touch express-open/close.
- **Sport Package E3** (requires optional Airmatic suspension and premium leather upholstery on E 320):  
Four 17" 5-spoke alloy wheels with 245/45WR17 high-performance tires.<sup>4</sup> Sculpted lower bodywork. Blue-tinted glass. Black grille with five chrome ribs and chrome surround. Bi-Xenon High Intensity Discharge projector low-beam and high-beam headlamps. Heated headlamp washers. All-LED brake lamps. Ivory-color gauge faces, backlit soft blue at night, with matte chrome instrument cluster surround. Matte chrome gearshift surround. Black birdseye maple wood interior trim with polished chrome outlining.
- **Package E4:** 60/40-split folding rear seats with center armrest pass-through. Fold-flat front passenger seat. Ski sack in rear center armrest pass-through.
- **Package E5:** Heated front seats. Heated steering wheel.

UNLESS THE CHILD IS BELTED INTO AN APPROPRIATE, PROPERLY INSTALLED **BABYSMART-COMPATIBLE** CHILD SEAT, A CHILD UNDER 13 WHO IS TOO LARGE FOR A CHILD SEAT MUST NOT USE THE FRONT SEAT. SEE OPERATOR'S MANUAL FOR ADDITIONAL WARNINGS AND INFORMATION ON AIR BAGS, SEAT BELTS AND CHILD SEATS. <sup>3</sup> Deletes standard cassette player. DVD-ROM maps do not cover all areas nor all routes within an area. <sup>4</sup> W-rated tires are optimized for performance driving and may provide reduced ride comfort, increased tire noise, substantially increased treadwear and greater susceptibility to damage compared with H-rated tires.