

HOLDEN'S
SAFETY AND SECURITY.
SETTING NEW STANDARDS.



VP COMMODORE AND CALAIS
VQ STATESMAN AND CAPRICE SERIES II.



OVER 70 DIFFERENT SAFETY
AND SECURITY FEATURES
PROVIDE THE PROTECTION
AND PEACE OF MIND
YOU DESERVE.

Holden's safety and security features are designed in, right from the start.

Few, if any, automobile manufacturers in the world can match our dedication to building safer and more secure motor vehicles. Nor can they match the unique experience our engineers and designers have of Australia's demanding driving conditions.

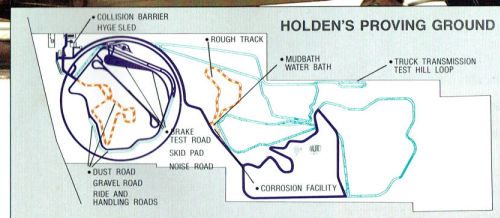
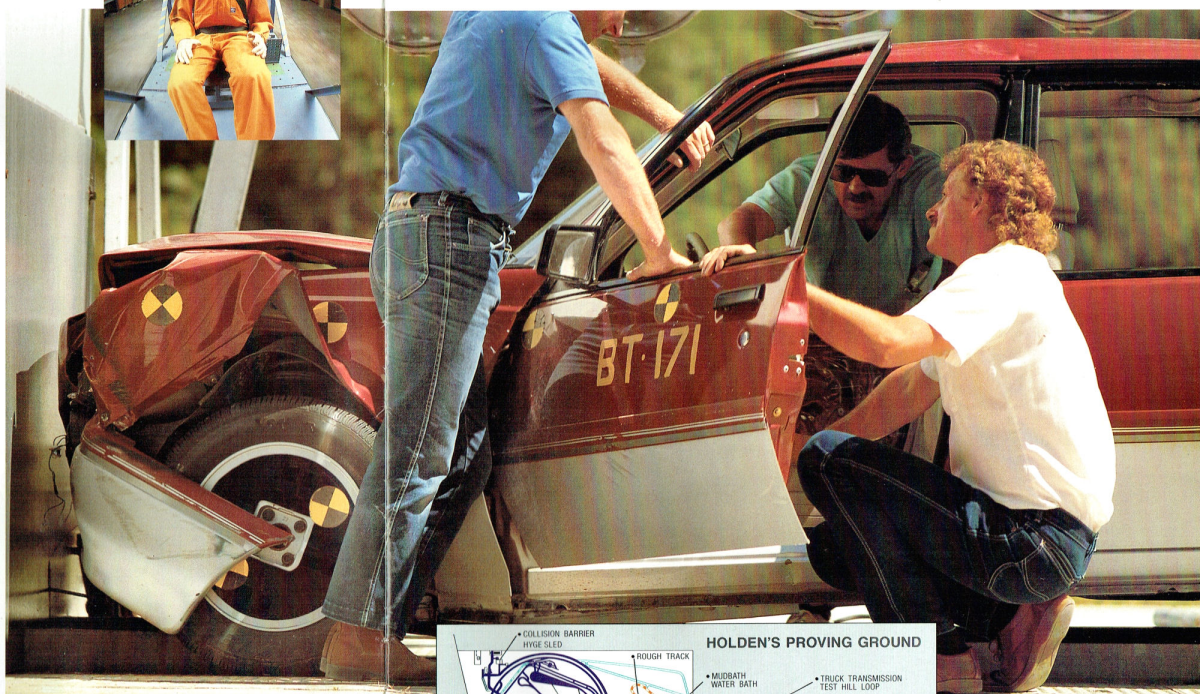
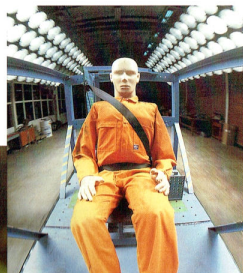
HOLDEN'S PROVING GROUND.

Each year more than 2.3 million kilometres are driven under the harshest test conditions at Holden's proving ground at Lang Lang in Victoria's Gippsland region: the largest and most comprehensive facilities in the Southern Hemisphere.

SAFETY AND SECURITY
SET THE STANDARD.

And when you consider the vast world-wide resources of General Motors at our disposal, it's easy to see how this dedication to safety and security has been turned into the reality of a complete system that sets a new standard for quality in • Accident Avoidance; • Crash Protection; • Driver Protection; • Vehicle and Driver Security; • Pedestrian Protection.

Over 70 innovative features designed in, to make driving a Holden a safer, more secure and satisfying experience.



FACT: *Holden's safety and security features are the most reassuring qualities of all.*

Above Left: The Hyge sled.
Above: Barrier test.
Left: Holden's proving ground.

HOLDEN'S BELIEVES THE BEST WAY TO STOP AN ACCIDENT FROM HAPPENING IS TO AVOID IT IN THE FIRST PLACE.

Underneath all the comfort and luxury in our large 6 cylinder and 8 cylinder cars is a complete safety system designed to help protect you, your family and your passengers from all directions.

This system's primary goal is to make accidents easier to avoid.

SAFER STOPS. EVEN ON DANGEROUS ROADS.

All our large, family cars have 4 wheel disc brakes as standard, together with dual master cylinders with a warning system. This means there are two separate hydraulic brake circuits, and in the unlikely failure in one of the circuits, the other remains operational for partial braking. A warning light on the instrument panel will be illuminated, thus alerting the driver to any loss of braking capability.

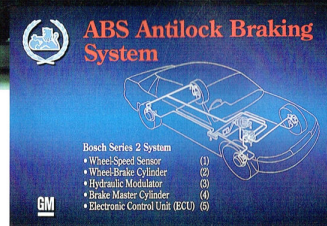
Variable ratio rack and pinion power steering, or the new Variatronic 'road speed' sensitive power steering system (dependent on model) are other safety features that help keep you in perfect control.

ABS

A new Anti-lock Braking System (ABS) is standard on the Caprice and optional on the Statesman, Calais, Commodore Executive, SS and Berlina V8 sedans with IRS - you can stop very quickly, and steer while you're doing it - even on slick, wet highways. Computerised sensors detect when a car's wheels begin to lock-up, then adjust the brakes automatically to restore the driver's control.

The ABS system is an additional safety feature to the standard 4 wheel disc brakes.

FACT: 'Over 90% of accidents occur because of human error.' - (Vic. Roads Safety Division).



Anti-lock Braking System standard on Caprice, optional on Statesman, Calais, Commodore Executive, SS and Berlina V8/IRS sedans.

ALL AROUND PROTECTION FOR YOU AND YOUR FAMILY.

All Holden cars offer a variety of protective technologies including crashworthy vehicle structures, energy absorbing interiors and most important of all... safety belts and child restraint anchorages.

In all our large cars, your family gets protection from every direction. Reinforced steel sections strengthen the roof, front and sides, enveloping driver and passengers in a rugged 'safety cage'. Cushioned front and back with computer-designed crush zones, this robust structure provides protection for your family during collisions and rollover accidents.

In 1968, General Motors-Holden's were the first automotive manufacturer in Australia to introduce an energy absorbing steering column on its range of cars.

And today's new range again leads the way in safety standards:

- Folding engine hood;
- Lap-sash seat belts with dual mode emergency locking retractors front and rear;
- Lap belts for centre passenger, front (where bucket/bench seats are fitted) and rear;
- Adjustable Upper Sash Guides front (Calais, Statesman and Caprice) and rear seating (Statesman and Caprice);
- Child restraint anchorages;
- Front seat head restraints;
- High strength urethane bonding of windshields;
- Energy absorbing instrument panel and roof lining;
- Engine slides under floor pan on severe frontal impact.

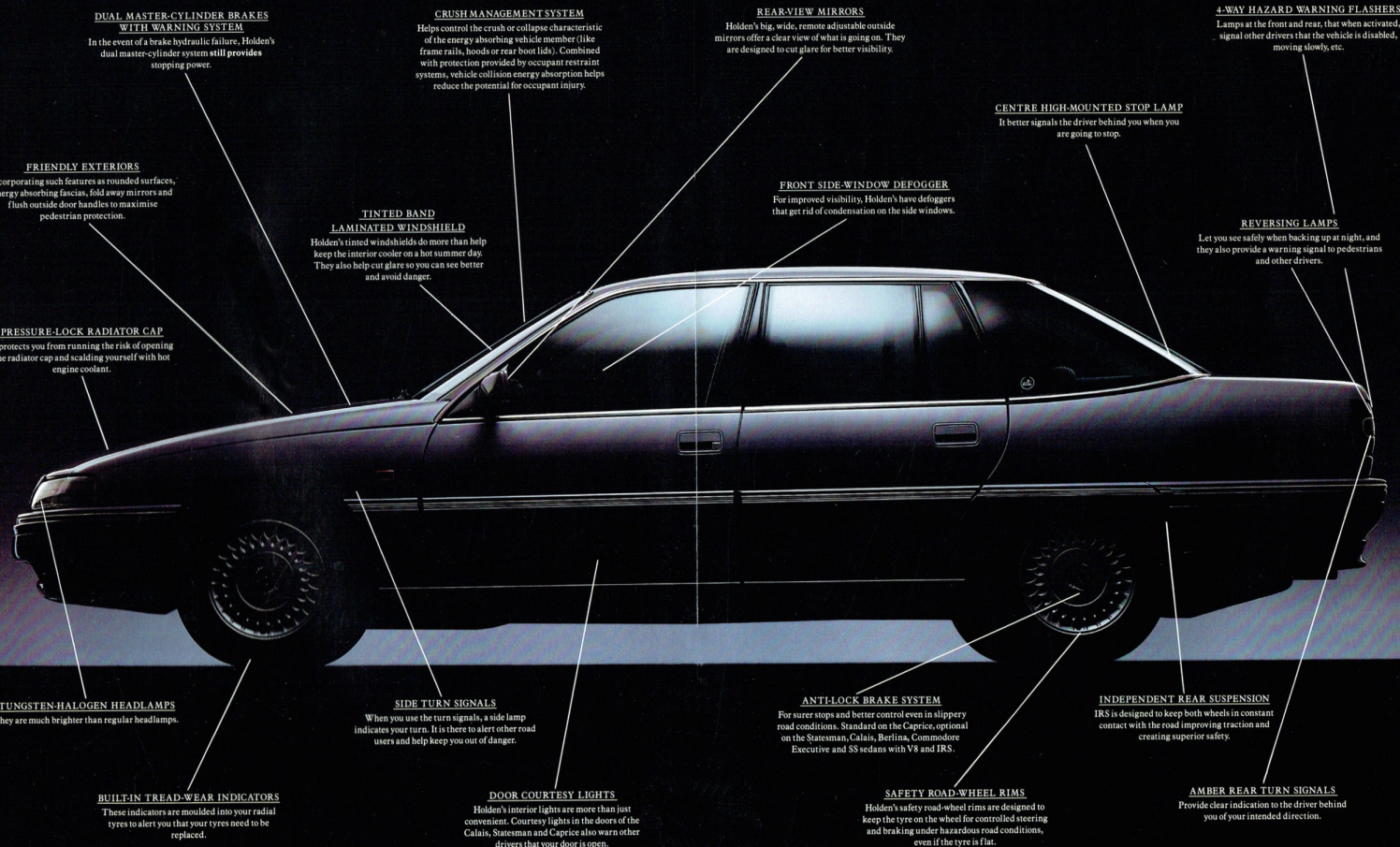
This list of safety features goes on and on. All scientifically designed and engineered through testing and production techniques to bring you a safer, better quality Holden motor car.

FACT: *Holden has taken the offensive in your defence.*



Above: Commodore Executive automatic sedan and wagon offer optional bucket/bench seating for 3 people in front. And the wagon models also offer a Plus 2 child seat accessory in the rear.
Left: Commodore Plus 2 forward facing seats with built-in seat belts and head restraints.

HOLDEN'S FIRST RULE OF SAFETY IS TO STOP AN ACCIDENT BEFORE IT HAPPENS.



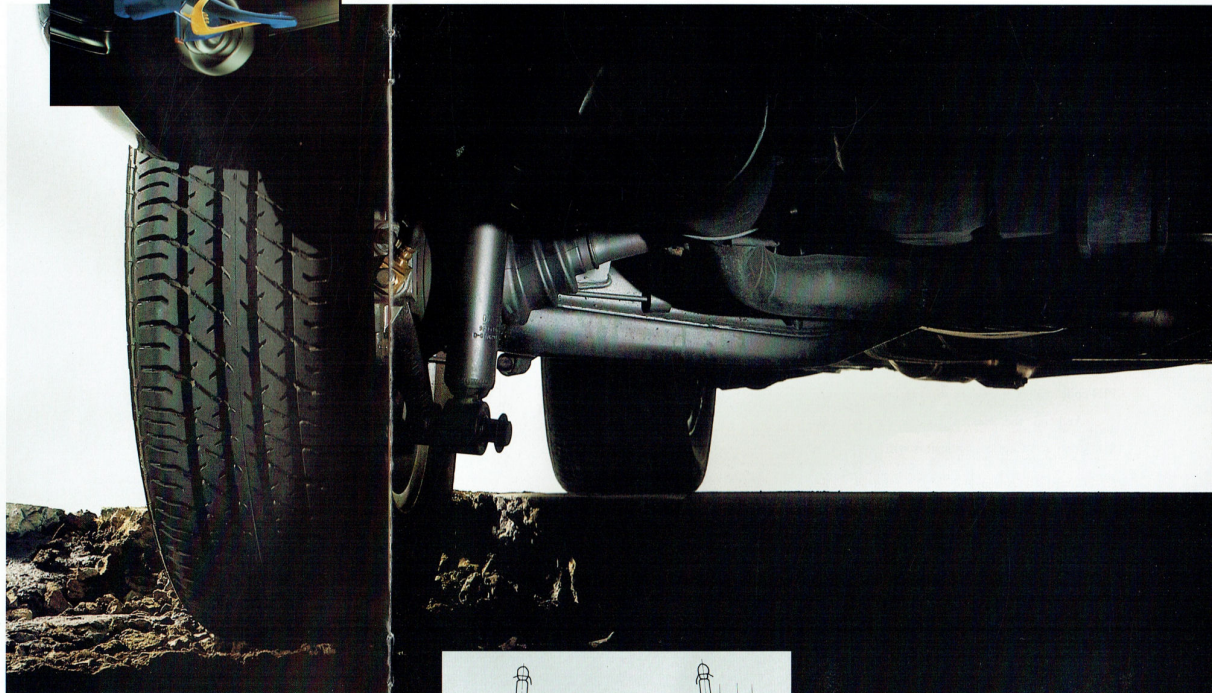
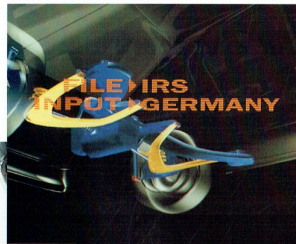
HANDLING THAT LETS YOU
HANDLE ALMOST ANYTHING.

It's been a European design tradition for many years now. For example: Mercedes-Benz and BMW. The difference is our IRS system was designed in Germany and developed and refined here by our engineers to suit our unique and diverse road conditions.

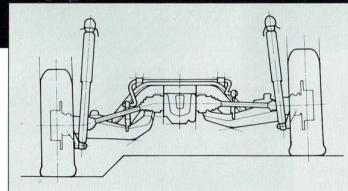
Independent rear drive shafts enable both wheels to keep in constant contact with the road, improving traction and ultimately creating superior safety. Unlike normal rigid rear axle cars, bumps or corrugations at high speed or during cornering won't throw the car off line.

The wheel that contacts with the bump absorbs it, not passing it on to the rest of the car. So it's safer once again. And as you can imagine in the wet, you've got better wheel guidance and traction when you need it most.

And, at the end of the day, you'll find it a big confidence booster, and another first for General Motors-Holden's. IRS is standard on the Commodore 'SS', Calais, Statesman and Caprice and available as a factory option on Commodore Executive, S and Berlina sedans.



FACT: *Independent Rear Suspension.*
A European tradition in safety and comfort.



Independent Rear Suspension System.

SECURITY AT THE TURN
OF A KEY. CONVENIENCE AT
THE PRESS OF A BUTTON.

The Australian developed electronic security system that's standard in our large cars was designed for Holden's by Mongoose, the biggest manufacturer of car anti-theft systems in Australia. It's simply operated by a remote radio control key attached to your keyring. All sedan and wagon passenger doors have the convenience of remote controlled central power locking as standard, with key activated deadlocks.

All of Holden's 6 and 8 cylinder cars have an automatic security system which disables the engine a short time after the driver leaves the car.

Even if a determined burglar makes an attempt to steal one of our large cars, he'll be foiled once again. The Delco engine management computer simply disables the engine. And the sound system's PIN-code makes it useless to everyone but you.

And on the Holden Calais, Berlina LX, Statesman and Caprice, indicators will blink to let you know the alarm system is armed, while the car aerial will automatically retract.

The security system on Holden Berlina LX, Calais, Statesman and Caprice also operates a remote boot release activated by the remote control key. When approaching the car and carrying heavy items, it can prove to be most helpful. It's worth bearing in mind that all this tighter security will be looked upon favourably by insurers.

In fact, the NRMA in their September survey of car security rated the new VP Holden Commodore top among Australia's big family cars. And the luxurious Calais outperformed all Mercedes Benz models, the Audi V8 and the Lexus LS 400.

FACT: *'Holden's VP Commodore is top for security.'*

(NRMA).



Above Left: Delco engine management computer.
Above and Left: Remote electronic security system
(standard all models).

1992 GENERAL MOTORS-HOLDEN'S AUTOMOTIVE LIMITED SAFETY AND SECURITY FEATURES.

	VP SERIES							VQ SERIES II		
	EXECUTIVE SEDAN	EXECUTIVE WAGON	S' PACK SEDAN	S' PACK WAGON	SS SEDAN	BERLINA SEDAN	BERLINA WAGON	BERLINA L.A. SEDAN	CALAIS SEDAN	STATSMAN SEDAN
OCCUPANT PROTECTION FEATURES										
Passenger compartment integrity ("Safety Cage")	S	S	S	S	S	S	S	S	S	S
Energy absorbing steering column	S	S	S	S	S	S	S	S	S	S
"Soft Feed" energy absorbing steering wheel	S	S	S	S	S	S	S	S	S	S
Side guard door beams	S	S	S	S	S	S	S	S	S	S
Front and rear crush zones	S	S	S	S	S	S	S	S	S	S
Crush initiators	S	S	S	S	S	S	S	S	S	S
Engine hood	S	S	S	S	S	S	S	S	S	S
Rear compartment deck lid	S	S	S	S	S	S	S	S	S	S
Frame rail	S	S	S	S	S	S	S	S	S	S
Folding engine hood	S	S	S	S	S	S	S	S	S	S
Folding rear compartment	S	S	S	S	S	S	S	S	S	S
Energy absorbing instrument panel	S	S	S	S	S	S	S	S	S	S
Energy absorbing internal sun visors	S	S	S	S	S	S	S	S	S	S
Energy absorbing roof lining	S	S	S	S	S	S	S	S	S	S
Interior rear vision mirror – breakaway	S	S	S	S	S	S	S	S	S	S
Lap/Shoulder Belts with Dual Mode Emergency Locking Retractors	S	S	S	S	S	S	S	S	S	S
Front outboard seating positions	S	S	S	S	S	S	S	S	S	S
Rear outboard seating positions	S	S	S	S	S	S	S	S	S	S
Lap belt with automatic locking retractor										
Centre rear seating position										
Manual lap belt										
Centre front seat (bench seat option)	O	O								
Centre rear seating position	S	S	S	S	S	S	S	S	S	S
Adjustable upper sash guides										
Front outboard seating positions										
Rear outboard seating positions										
Child restraint anchorages										
Rear seating positions	S	S	S	S	S	S	S	S	S	S
"Child Safety" power window/lockout – rear door					O	O	O	S	S	S
Child security locks – rear doors	S	S	S	S	S	S	S	S	S	S
Dual engine hood latch	S	S	S	S	S	S	S	S	S	S
Energy absorbing front seat backs	S	S	S	S	S	S	S	S	S	S
Positive rear seat back locks										
Folding centre seat back	S	S	S	S	S	S	S	S	S	S
Folding seat back		S		S		S		S		S
Forward facing third seat for two children up to 8 years includes manual lap/shoulder safety belts and head restraints		A		A		A		A		A
Head restraints										
Front seats – adjustable	S	S	S	S	S	S	S	S	S	S
Headrests										
Rear seats – bolster type – fixed									S	S
Laminated windshield glass and tempered safety glass	S	S	S	S	S	S	S	S	S	S
Urethane bonding in glass installation	S	S	S	S	S	S	S	S	S	S
First aid kit										S

LEGEND S = Standard Feature O = Factory Option A = Dealer Fitted Accessory

	VP SERIES							VQ SERIES II		
	EXECUTIVE SEDAN	EXECUTIVE WAGON	S' PACK SEDAN	S' PACK WAGON	SS SEDAN	BERLINA SEDAN	BERLINA WAGON	BERLINA L.A. SEDAN	CALAIS SEDAN	STATSMAN SEDAN
PEDESTRIAN PROTECTION FEATURES										
Friendly exterior	S	S	S	S	S	S	S	S	S	S
Deformable hood ornament										S
Flush outside door handles	S	S	S	S	S	S	S	S	S	S
Exterior mirrors – folding	S	S	S	S	S	S	S	S	S	S
ACCIDENT AVOIDANCE FEATURES										
Braking system										
Dual master cylinder brakes with warning system and disc brakes – all wheels	S	S	S	S	S	S	S	S	S	S
Antilock braking system	O				O	O		O		O
Steering										
Rack and pinion power steering-variable ratio	S	S	S	S	S	S	S	S	S	S
Variable/ratio vehicle speed sensitive assist										S
Suspension										
Radial tuned suspension	S	S	S	S	S	S	S	S	S	S
Independent rear suspension	O	O			S	O		O		O
Safety road wheel rims	S	S	S	S	S	S	S	S	S	S
Performance/speed rated radial tyres with built-in tread wear indicators	S	S	S	S	S	S	S	S	S	S
Reversing lamps and centre high mounted stop lamps	S	S	S	S	S	S	S	S	S	S
Parking lamps which illuminate with headlamps	S	S	S	S	S	S	S	S	S	S
Amber front, rear & supplementary side direction indicator lamps	S	S	S	S	S	S	S	S	S	S
Four way hazard warning flashers	S	S	S	S	S	S	S	S	S	S
Rear reflex reflectors	S	S	S	S	S	S	S	S	S	S
Door courtesy lamps										S
Safety road warning triangle										S
Windshield demister/washer/multi-speed wipers	S	S	S	S	S	S	S	S	S	S
Front side windows demister	S	S	S	S	S	S	S	S	S	S
Rear window demister	S	S	S	S	S	S	S	S	S	S
Rear window washer/wiper					S			S		S
Exterior rear vision mirrors – remote adjustment	S	S	S	S	S	S	S	S	S	S
Interior rear vision mirror – daylight	S	S	S	S	S	S	S	S	S	S
SECURITY/THEFT DETERRENT FEATURES										
Double sided profile cut key security system	S	S	S	S	S	S	S	S	S	S
Central locking with deadlock extra security position	S	S	S	S	S	S	S	S	S	S
Anti-theft electronics										
Automatic engine disable when ignition key removed	S	S	S	S	S	S	S	S	S	S
Remote key locks doors	S	S	S	S	S	S	S	S	S	S
Remote tailgate lock/unlock					S			S		S
Remote key sets alarm and unlocks boot lid								S		S
Vehicle alarm								S		S
Remote (inside) fuel filler door release	S	S	S	S	S	S	S	S	S	S
Remote (inside) engine hood release	S	S	S	S	S	S	S	S	S	S
Radio/cassette P.I.N. coded	S	S	S	S	S	S	S	S	S	S
Cargo security cover	A		A		A		A		A	

HOLDEN 12/20 WARRANTY. Every Holden 6 cylinder and 8 cylinder car is covered by the Holden New Vehicle Warranty which covers your vehicle for the first 12 months or 20,000 kilometres, whichever occurs first. A word about this catalogue. We have tried to make this catalogue as comprehensive and factual as possible. However, since the time of printing some of the information you'll find here may have been updated. Also, some of the equipment shown or described through this catalogue may have been changed and/or is available at extra cost. And the right to reserve the right to make changes at any time without notice, in prices, colours, materials, equipment and models. Your Holden Dealer has details, and before ordering, you should ask him to bring you up to date. No Holden Dealer or other person is authorised or permitted to give or make any statement, assertion or undertaking in relation to the quality, performance characteristics, descriptions or fitness for any purpose of any Holden product which is at variance with any written statement, assertion or undertaking given or made by General Motors-Holden's Automotive Ltd. A.C.N. 006 991 732 or General Motors-Holden's Sales Pty. Ltd. A.C.N. 004 680 831 in its published sales literature, and neither company accepts any liability for any such unauthorised action. General Motors-Holden's Automotive Ltd. and General Motors-Holden's Sales Pty. Ltd. have franchised dealers in many parts of Australia for the sale of service parts and the provision of service to owners of Holden's products. Every endeavour is made to ensure that such dealers carry adequate stocks of service parts, but neither General Motors-Holden's Automotive Ltd. nor General Motors-Holden's Sales Pty. Ltd. makes any promise other than that contained in the New Vehicle Warranty given by General Motors-Holden's Automotive Ltd. that such parts or service facilities will be available at any specific location or at any particular time. Copyright General Motors-Holden's Automotive Ltd. Printed April 1992. AD18071.



HOLDEN'S
SAFETY AND SECURITY.
SETTING NEW STANDARDS.



VP COMMODORE AND CALAIS
VQ STATESMAN AND CAPRICE SERIES II.

