

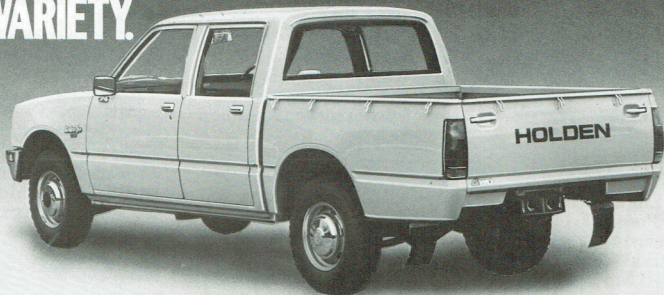
# NEW HOLDEN RODEO



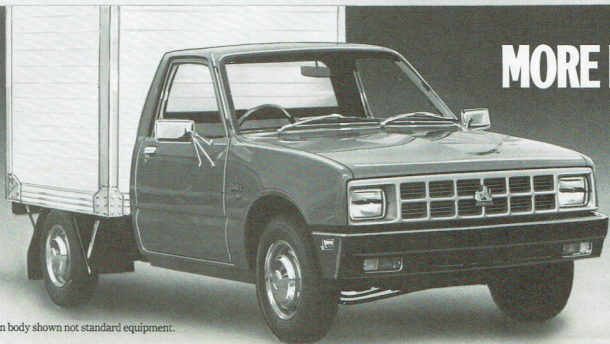
**MORE POWER.**

**4x4 Pick-up.**

**MORE VARIETY.**



**4x4 Crew Cab.**



**MORE FOR YOU.**

**4x2 Chassis/Cab.**

Van body shown not standard equipment.

The new Rodeo range is a classic round-up of models and engine choice to suit any need. Rodeo's famous fuel economy and reliability now come with extra power. Power to perform all the miracles you need from a 1 tonne pick-up – and it's a Holden.

So you know Rodeo's reliability and design

expertise is backed by the most comprehensive dealer service network in Australia.

## POWER PLUS.

If you've never known the excitement of being in a Rodeo, now's the time to try it.

Strap on your spurs and step right in through the wide opening doors. You can

saddle up a wide range of Rodeo's, long or standard wheelbase, 4 wheel drive, 2.2 litre diesel engine, 1.8 or 2 litre petrol engines.

This year there are more exciting additions to the Holden Rodeo stable. The sporty Rodeo 2000 5-speed performance petrol pick-up and the long wheelbase 4 x 4 petrol Crew Cab.

GVM 4 x 2 and 4 x 4 models	- 2350 Kg.
GVM Rodeo 2000 5 speed	- 1800 Kg.
GVM Rodeo 4 x 4 Crew Cab	- 2250 Kg.
GVM 4 x 4 models	- 2100 Kg.
(Rough Terrain)	

### Suspension:

Front suspension: independent wishbones with torsion bar springs, stabiliser bar, and double-acting telescopic shock absorbers. Rear suspension: two-stage semi-elliptical alloy steel leaf springs with bias mounted shock absorbers.

### Brakes:

Large 208mm front disc brakes with rear drums, featuring a proportioning valve to prevent rear wheel lock-up.

### Wheels and Tyres:

4.5j x 14 steel wheels are standard on all models. 5.0j x 14 steel wheels are standard on the Rodeo 2000 5-speed.

185R x 14 - 8 ply radial tyres are standard on all 2-wheel drive models.

6.50 x 14 - 8 ply snow pattern tyres are standard on all 4-wheel drive models.

185R x 14 - 6 ply radial tyres are standard on the Rodeo 2000 5-speed.

### Standard Features

#### Exterior (All models):

Laminated windscreen. Deep section black front bumper. New styled corrosion-proof polycarbonate grille. Rectangular headlamps. Turn signal repeater lamps on front fenders for improved safety.

### Additional on pick-up models:

Locking fuel filler door. Large two-sided tail lamps. Horizontal and vertical tailgate opening system.

### Interior

#### (All models):

Large, thick-padded sunvisors. Flow-through ventilation. Fan assisted heater/demister. Hazard warning flashers. Column control stalk for turn signals, 2 speed washer/wipers. Non-reflective instruments. Push button AM radio.

### (Additional on Rodeo 2000 5-speed Model):

Bucket seats. Centre console. Full carpet.

PLEASE NOTE: As the policy of General Motors-Holden is one of continual product improvement, all specifications and equipment are subject to change without notice.

No GMH Dealer or other person is authorised or permitted to give or make any statement, assertion or undertaking in relation to the quality, performance characteristics descriptions or fitness for any purpose of any GMH product or in connection with the supply of any GMH product, which is at variance with any written statement, assertion or undertaking on any of these subjects given or made by General Motors-Holden's Limited or General Motors-Holden's Sales Pty. Ltd. in its published sales literature and neither company accepts any liability for any such unauthorised action.

General Motors-Holden's Limited and General Motors-Holden's Sales Pty. Ltd. have franchised dealers in many parts of Australia for the sale of service parts and the provision of service to owners of GMH's products. Every endeavour is made to ensure that such dealers carry adequate stocks of service parts and are equipped to provide satisfactory service, but neither General Motors-Holden's Limited nor General Motors-Holden's Sales Pty. Ltd. makes any promise other than that contained in the New Vehicle Warranty given by General Motors-Holden's Sales Pty. Ltd. that such parts or service facilities will be available, or available at any specific location or at any particular time. GMH 12/20 Warranty.

Every Holden is covered by the GMH Warranty which covers your vehicle for the first 12 months or 20,000 kilometres whichever occurs first.

## SPECIFICATIONS.

### Engine - Petrol:

4-cyl, 1817cc, OHC, 63 kW @ 5000 rpm (DIN), 131 Nm @ 3000 rpm (DIN).

### Engine - Petrol:

(Rodeo 2000 5-speed model only) 4-cyl, 1949cc, OHC, 65 kW @ 4600 rpm (DIN), 141 Nm @ 3000 rpm (DIN).

### Engine - Diesel:

4-cyl, 2238cc, OHV, with oil cooler, 45 kW @ 4000 rpm (DIN), 130 Nm @ 2200 rpm (DIN).

### Engine Stop (Diesel):

Automatic.

### Transmission:

4-speed direct drive, all-synchromesh transmission, column control on 4 x 2 models, floor mounted on 4 x 4 models. (Rodeo 2000 5-speed model only.) Five-speed overdrive, all synchromesh transmission, floor-mounted.



**NEW**  
**Holden Rodeo**