

2000 Infiniti I30



I30

Innovations are rarely drafted with a sharp pencil.

While people often wonder about

what the future will bring, Infiniti

knows the answer: It will bring

innovation and change. We know

when one journey ends, another

is just beginning. Each new year

gives us another opportunity to

make our automobiles better. This

year, our case rests in the all-new

Infiniti® I30®. Not simply to show

off our latest examples of luxury

and engineering, but to address

our ultimate goal of pleasure.

And that's why, for all of the new

I30's technological merits, you

won't really be able to truly

appreciate its features until you

take it out on a long coastal drive.





To help guide you through the new Infiniti I30 brochure, we've divided it into four sections: Performance, Luxury, Styling and Innovations. While these sections provide a substantial overview,

this piece was designed to be used in conjunction with our web site at i30.infiniti.com. As you go through this brochure, you'll see icons and specific web addresses that will help steer you to more detailed information on specific topics and individual features. This allows you to go straight online to whatever subject interests you the most. So read on, and we'll see you in cyberspace.

04 performance

12 luxury

22 styling

32 innovations

42 the total ownership experience

44 specifications

I30

An aggressive display of intelligence.

In the new I30, as with all of our luxury automobiles, technology is critical. But perhaps the best example of our sophisticated engineering to date is the latest version of our new 24-valve VQ engine. For the year 2000, it produces 227 horsepower. Not by means of bigger components, but through more inventive thinking. We reconfigured some of its most critical elements without sacrificing its renowned efficiency. All to create a driving experience best enjoyed by those who want to face the future head-on and with the tachometer needle moving up.





Optional equipment shown.

The all-new I30 has realized a

near 20% boost in horsepower.

This increase in power requires

heightened control. A rear

Multi-Link Beam™ suspension

and improved steering system

provide precise handling. And

for more predictability over

unstable road conditions, the

I30t Touring Model's Viscous

Limited-Slip Differential is able

to detect wheel slip and then

deliver power to the opposite

wheel to help regain control.





Almost everyone prefers the thrill of driving over a visit to the service bay. The all-new Infiniti I30 features dual-tipped platinum spark plugs, which contribute to achieving a 100,000 mile tune-up interval.* This should now leave you with more time to get acquainted with our Traction Control System,** which quickly detects wheel slippage and compensates automatically, to help you remain in control.

*Under normal driving conditions with routine fluid and filter changes. See Owner's Manual for details.

**Optional



Horsepower



VQ Engine



Steering



Suspension



Wheels

You've just finished the

Performance section of the

new Infiniti I30 brochure.

However, if you want to get a

little deeper into the details,

there is more information

available on the Internet. Visit

[i30.infiniti.com/performance](http://www.i30.infiniti.com/performance)

to find out more about the

I30's performance features

and specifications. The icons

will help you navigate through

the web pages. And be sure to

check out the video clip of the

new Infiniti I30 as it was meant

to be seen: Moving fast.

I30

Among the riches, a wealth of good sense.

This year, our standard of luxury

was raised even higher for

the new Infiniti I30. There are

elegantly-gathered leather

seating surfaces, wood-tone

trim, and two-position memory

seats with automatic entry/exit

function. A one-touch power

sliding glass sunroof with tilt

and rear sunshade help keep

the cabin and your passengers

cool. We've also included

a HomeLink® Universal

Transceiver, which you can

program to operate your

garage door opener or electric

gate from your vehicle. So

while intelligent engineering is

always hard work, the results

are very easy to live with.





Luxury means never having to work too hard. To this end, the new I30 offers the benefits of conveniently arranged instrumentation, featuring our Fine Vision electroluminescent gauges. They're elegantly designed and easy to read to provide quick and clear information to the driver. The better to keep your eyes on the road ahead.







In the all-new Infiniti I30, the old-world elegance of our Infiniti signature analog clock makes its home right next to the new-world pleasures of a premium Bose® audio system. Also included are a one-touch open and close sunroof and front windows. The new center armrest is height adjustable, and flips back to expose dual-level storage for a cell phone and CDs. The I30 also includes a 12-volt power outlet for your computer or mobile printer.



Bose® Stereo



Interior Space



Seats



Center Console



Analog Clock

So concludes the Luxury section of the new Infiniti I30 brochure. But there is still a wealth of information we'd like to share about all its amenities. Visit i30.infiniti.com/luxury to find out more. The navigational icons will help you find your way around the web site. You can take a virtual tour of the I30's cabin, and see a 360-degree spin-around view of its interior, the better to admire its many fine features.

I30

Its subtlety has never been more obvious.

The look of the all-new Infiniti

I30 is classic and enduring,

from the contour and fit of its

body panels to the I30's 17"

performance sport alloy wheels.

In an inspired example of form

following function, its shape is

the result of thinking through

each aspect of the I30 from all

perspectives at the same time.

This complex process is known as

simultaneous interior/exterior

design. Simply put, our engineers

work on everything together,

feature by feature, and finally,

innovation after innovation.

Different disciplines working

with a common purpose: To

create luxury cars of unequaled

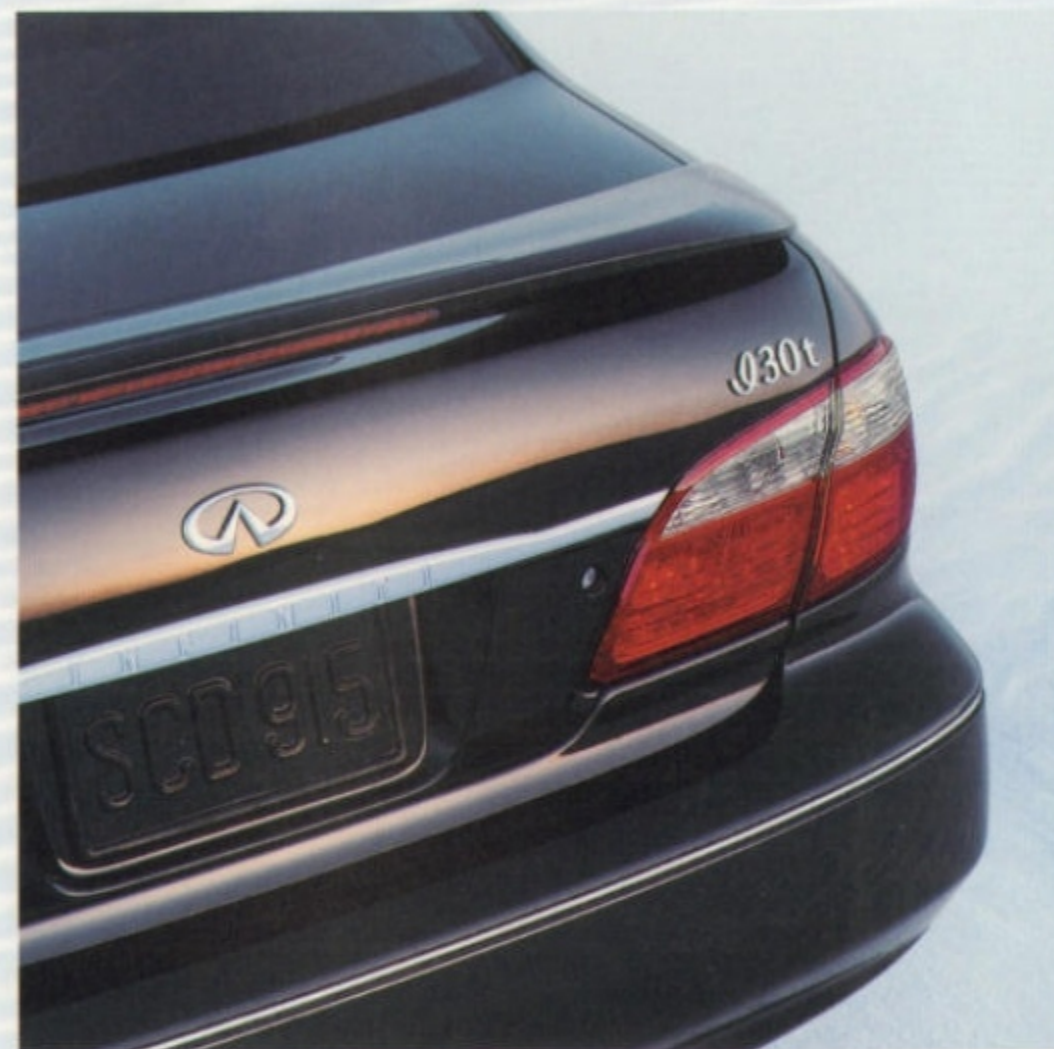
quality and performance.

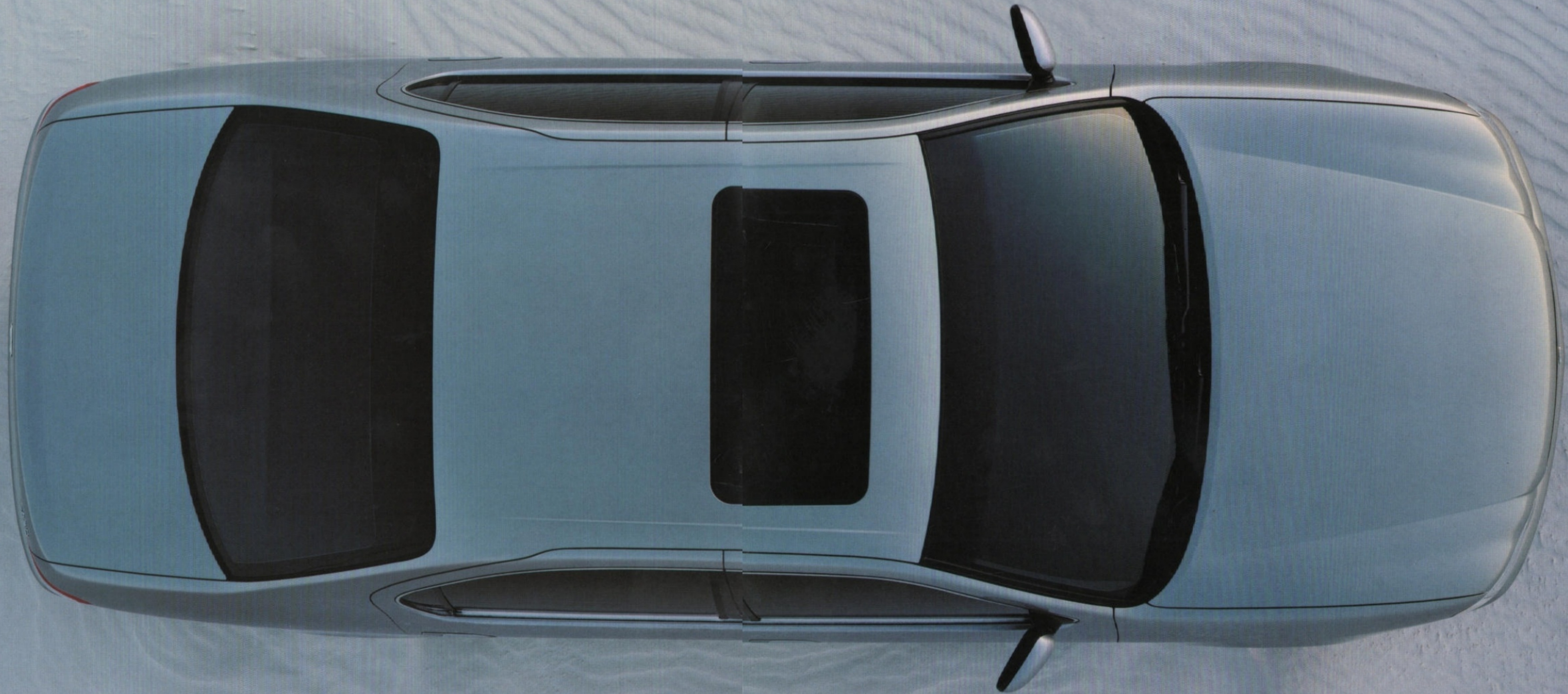




At Infiniti, we've gone through great lengths to make the all-new I30 appealing from every view. Its grille is singularly attractive from the outside, and technically beneficial from the underside, where a vented undertray was added below the engine. Beyond refining its shape, this configuration helps manage airflow and reduce the engine bay's temperature.

Optional equipment shown.







Every luxury vehicle has its own individual character. The all-new I30 offers lines that are both intelligently designed and graceful. Its styling lines completely encircle the vehicle. Our simultaneous interior/exterior design can be examined in its new panoramic rear window. To accommodate the rear passengers, the I30's wheelbase was increased by nearly two inches, so we could improve the view and add more space in the rear seat.

Optional equipment shown.



Xenon
Headlights



Asymmetrical
Wipers



Panoramic
Rear Window



Redesigned
Grille



Simultaneous
Design

You have now come to the end of the Styling section. While you probably now have a good idea of the new I30's elegant exterior shape, you may want to access the more detailed information available on the web. Please visit the web pages at **[i30.infiniti.com/styling](http://www.i30.infiniti.com/styling)** to find out more about the new I30's styling features and options, using the icons to help you find your way around. If you wish, you can access a 360-degree spin-around view of its exterior.

I30

The longest road is our imagination.

Progress is not created by contented

people. It is, however, often achieved

by the engineers who work on the

I30's VQ engine. In fact, according to

Ward's Auto World, last year's I30

has "simply the best V6 engine in

America."* Obviously, those are very

flattering words. But not enough to

keep us from trying to make it better.

Because at Infiniti, nothing is ever too

insignificant, or too good, to rethink.

The new I30 is the final product of

doing countless tests, performed on

drafting tables and computer screens,

and then finally out on test tracks.

But in fact, some of the most elegant

work was first dreamed up in our

imagination. And with each new

idea, the Infiniti I30 will continue

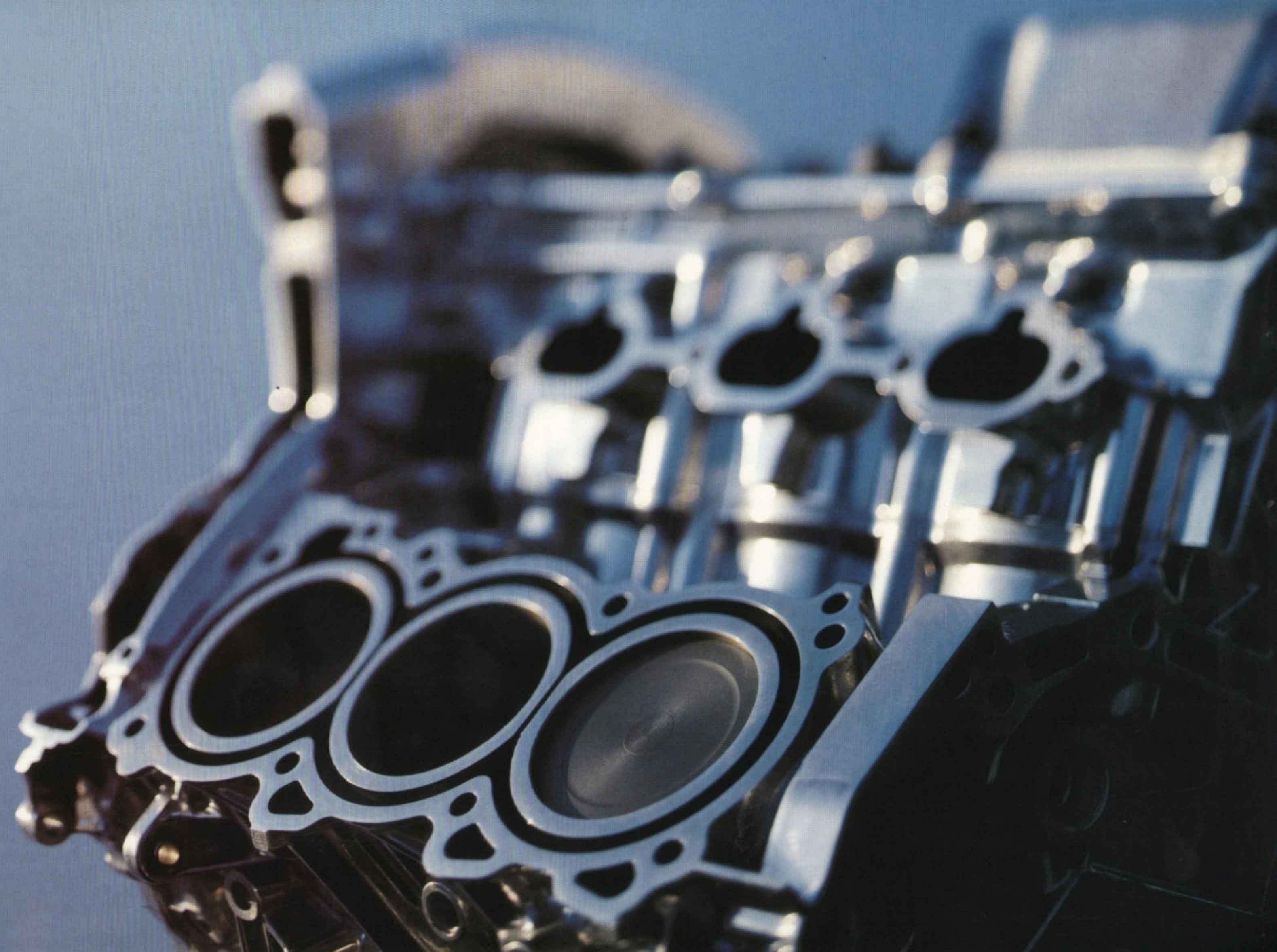
to improve. Perhaps that's why

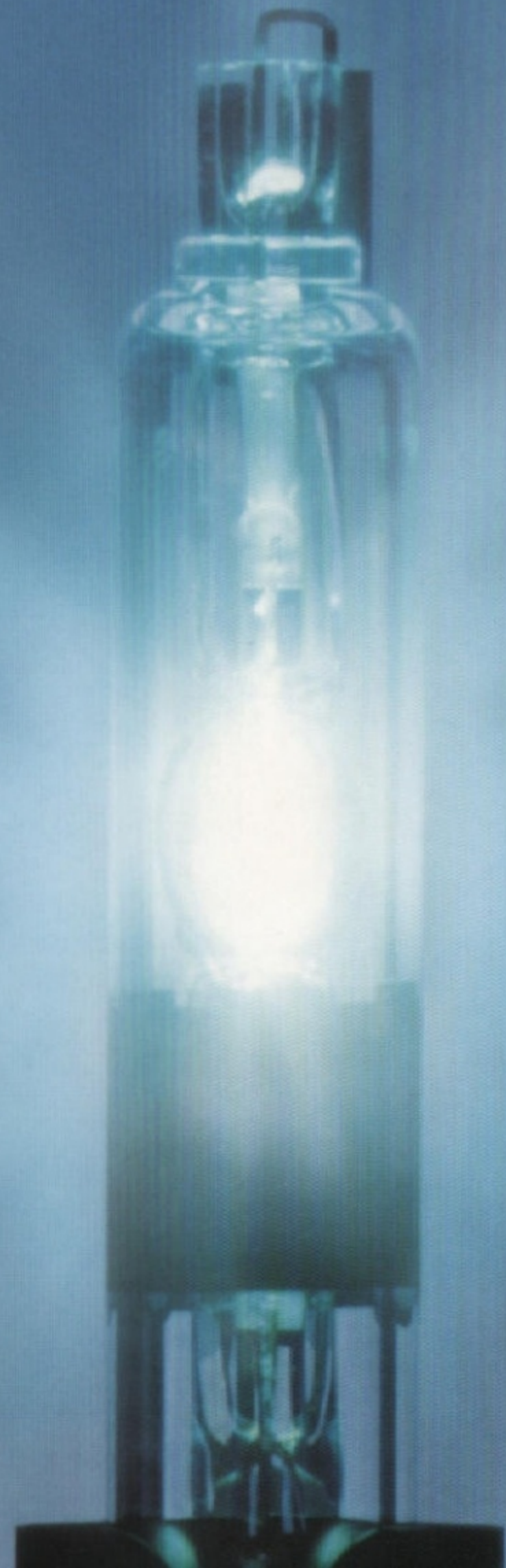
Kiplinger's called last year's I30

"One of the best values in its class."**

*Ward's Auto World, January 1999

**Kiplinger's New Cars & Trucks 1999 Buyer's Guide.



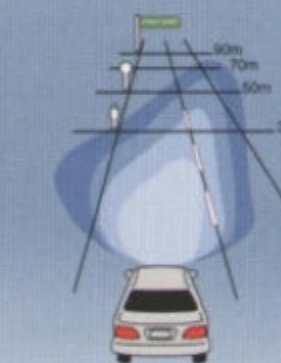


Here comes the sun. Or at least, Infiniti's finest approximation of it to date, in the form of the I30's innovative new Xenon High Intensity Discharge (HID) headlights.* Consider that the human eye is most sensitive to a bluish wavelength range found in sunlight. Infiniti engineers

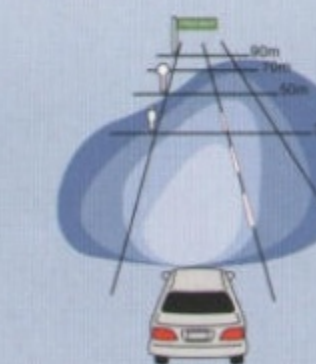
selected headlights with a beam color that more closely resembles these particular hues, instead of the familiar yellow cast of more common halogen bulbs. Moreover, the Infiniti I30's new HID headlights have a very high total output, with the ability to throw a beam of light across a much deeper and broader field of vision. This more capable beam helps the driver recognize and judge the driving environment more easily and from a greater distance. And with its high visibility, it's easier for other drivers to see you coming.

*Available only on the 2000 I30t Touring Model.

Xenon High Intensity Discharge headlights provide light by generating an arc discharge between the two metal electrodes in a bulb filled with xenon gas. The light has a color that makes it easier for a human eye to detect. The configuration of the headlight reflector also helps expand the area of illumination, while minimizing glare to oncoming traffic. Specifically, the HID light pattern is 30% wider and 30 feet longer, increasing the total lighted area.



Ordinary Halogen Headlights



Xenon Headlights

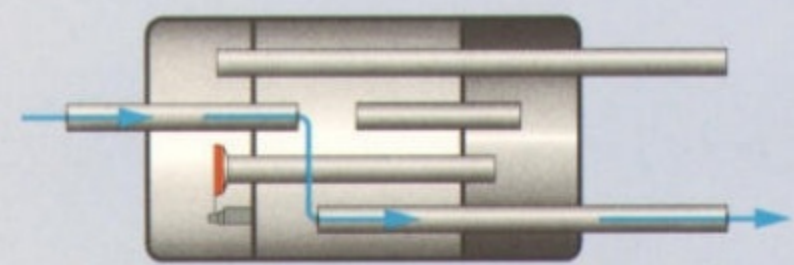


figure 1

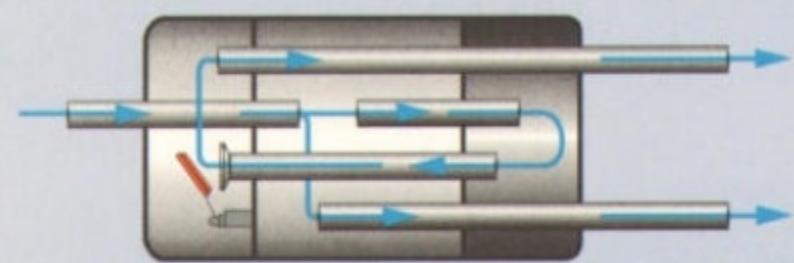


figure 2

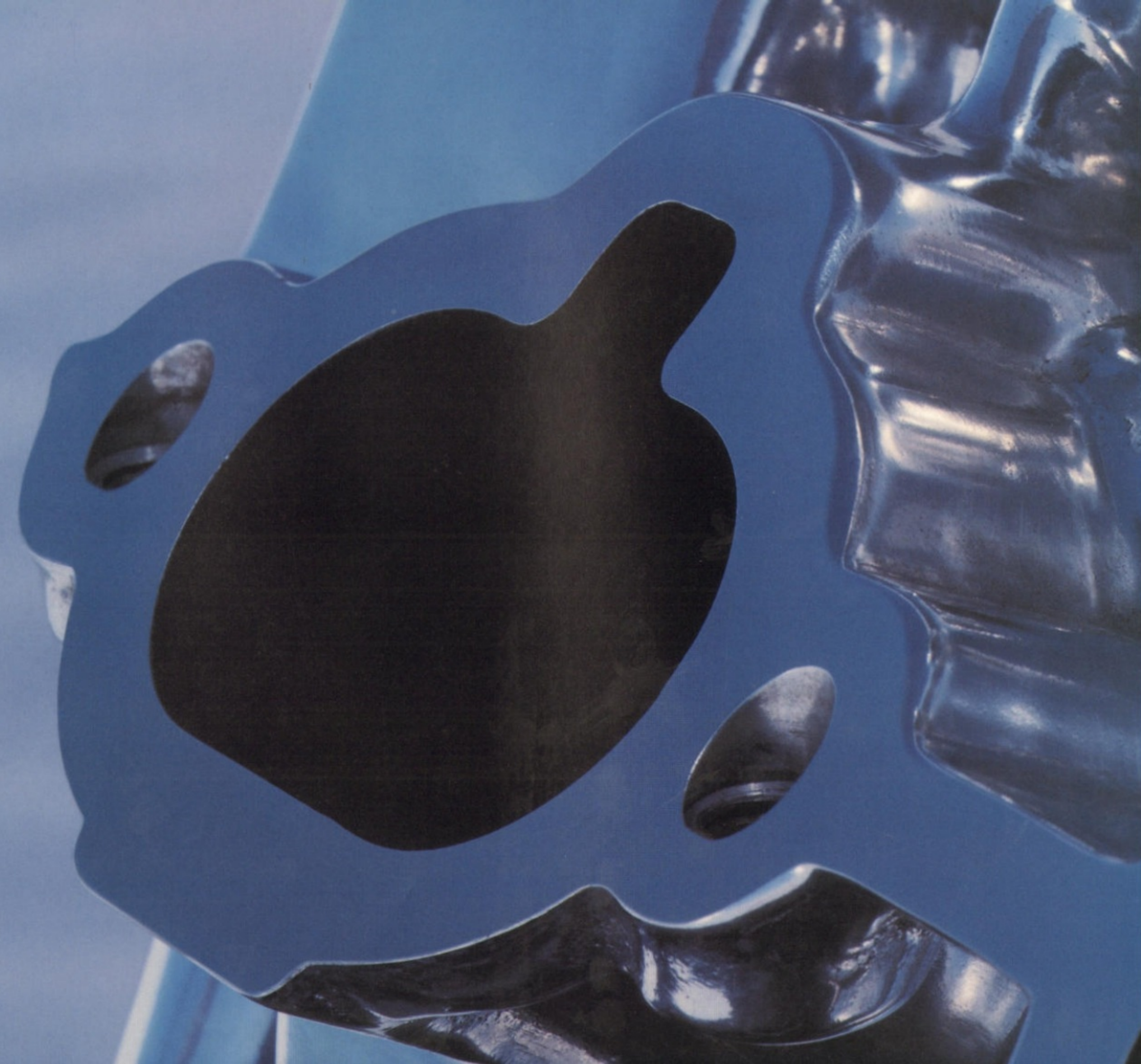
To help make the award-winning VQ engine produce yet more power, Infiniti engineers designed a variable capacity muffler. In figure 1, when pressure inside the main muffler is low (at idle or constant speed), the control valve is closed. In figure 2, when pressure inside the main muffler is high (during acceleration), the control valve is opened. Reducing the exhaust system back pressure helps maintain a consistent, progressive torque curve.

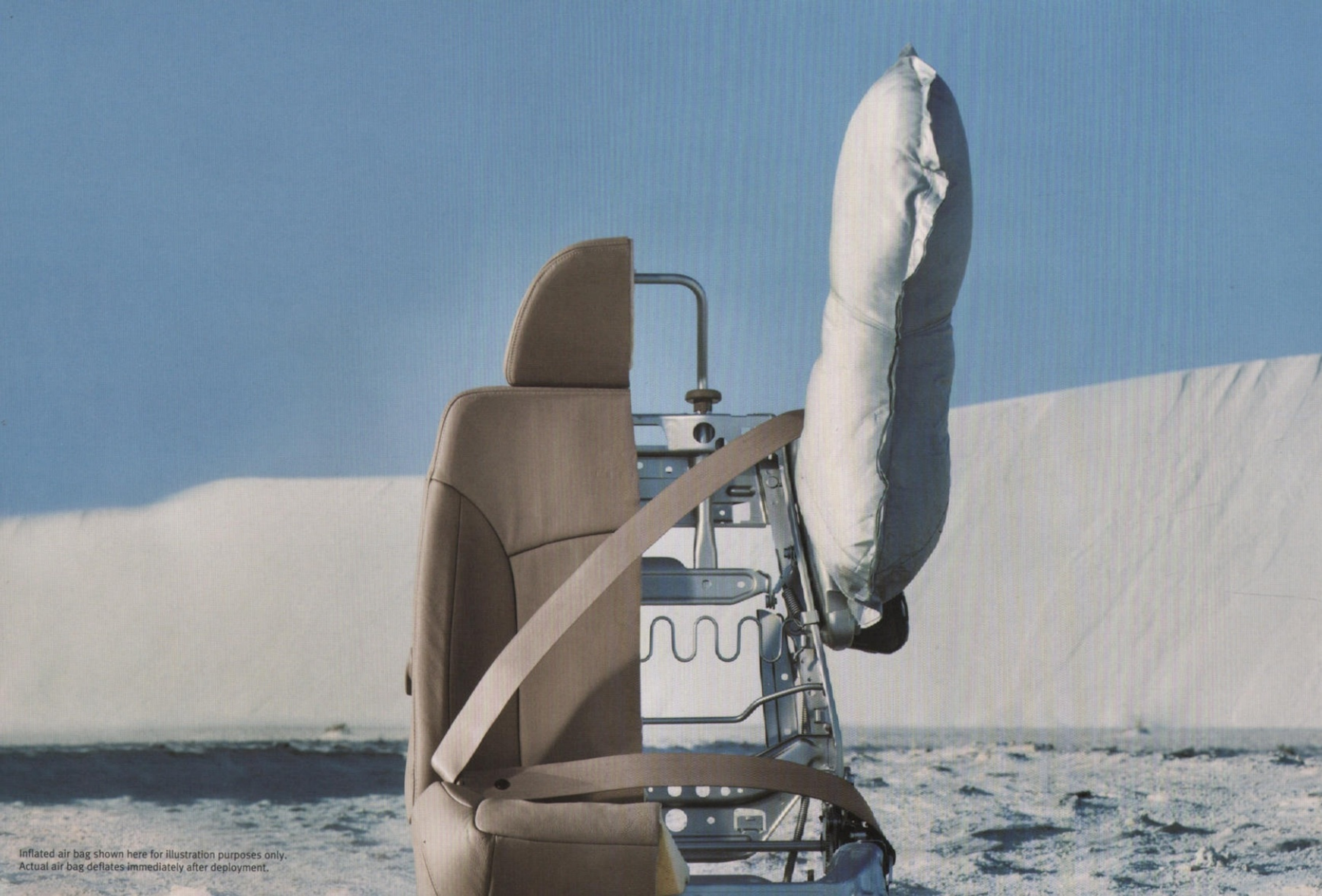
From all our experience in racing, we know the sign of a good engine is when you can make small changes and get dramatic results. The Infiniti I30's VQ engine has been very well received, and was named as one of Ward's ten best for the last five years.* This year, the all-new I30's 227 horsepower represents an increase of nearly 20%, all

without having to change its fundamentals. However, it does look completely different on paper, with a reduced horsepower to weight ratio. For all its extra power, we were able to make it more efficient. Among many other features, our engineers have created a variable-flow air intake manifold that can

make air available more quickly to the engine when running at higher RPMs. At the same time, we revised its exhaust system (see figures 1 and 2). The result: a flatter torque curve delivering smoother acceleration, and 37 more horsepower.

*Awarded ten-best status by Ward's from 1995-99. Ward's Auto World, January, 1999.





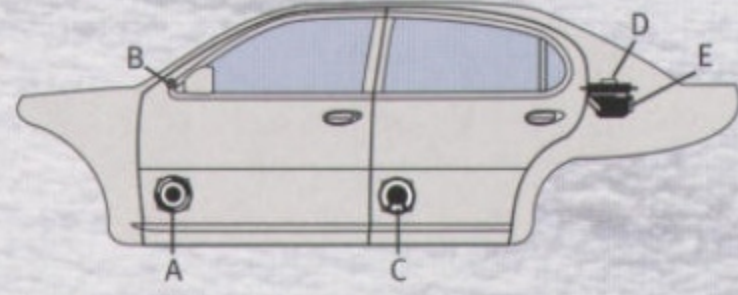
At Infiniti, we try to think of and prepare for the unthinkable. Starting with a stiff unibody construction to help redirect impact energy around the passenger cabin. Front and rear crumple zones help dissipate and control impact energy, and pipe-style steel side-door guard beams help resist side intrusion. For your protection, we offer

front supplemental air bags. We also have driver and front passenger head and chest side-impact supplemental air bags, which are mounted in the seats for protection when the seat is in various positions. We also include front 3-point seat belts with pre-tensioners and load limiters. Our larger 4-wheel power disc brakes with ABS can help to add a measure of control in emergency braking situations. To help reduce the possibility of whiplash, we're introducing active head restraints, designed to help counteract the forces created in certain rear-end collisions. Starting with the new I30, this safety device will become standard on all Infiniti sedans.

As indicated by the following illustration, in a rear-end collision, your body is forced against the seat back. When this pressure reaches a certain point, pre-set limiters activate the active head restraint to help protect the head and neck.



Inflated air bag shown here for illustration purposes only. Actual air bag deflates immediately after deployment.



Bose and Infiniti began work on the 2000 I30's music system in 1996. The car and the system are built together, so all elements of the system work in harmony with the acoustics of the I30's interior. Inside each of the front doors is a 6.5-inch, wide-range speaker (A); each front door A-pillar holds a 1-inch tweeter (B); the rear doors each contain a 5.25-inch, full-range speaker (C). In the rear, a linear amplifier with five channels of active electronic equalization and Bose patented signal processing technology powers all of the door and A-pillar speakers (D). Hidden within the parcel shelf is a remarkably slim Nd™ woofer powered by a 100-watt switching amplifier (E).

It doesn't take a rocket

scientist to know that all

passengers love music. But

it takes an audio engineer to

make sure that front and rear

listeners are treated equally

to the sounds of the new I30's

premium Bose® 200-watt,

AM/FM/CD/cassette audio

system. After carefully

analyzing the acoustics of

the I30's cabin, Bose

determined the ideal locations

for seven of their speakers,

custom-designed to fit into

the cabin without compromise

to the passenger room. Not

surprisingly, the rear of the

cabin posed the biggest

challenge: How to get huge,

full sound with rich bass

out of an 8" x 2" space.

The answer: A compact,

patented Nd™ woofer using

a Neodymium Iron Boron

magnet. Despite its smaller

size, it has ten times the

energy density of a standard

magnet. All this technology

ensures concert hall sound

quality, so that in the all-new

I30, there won't ever be a

bad seat in the house.





Xenon
Headlights



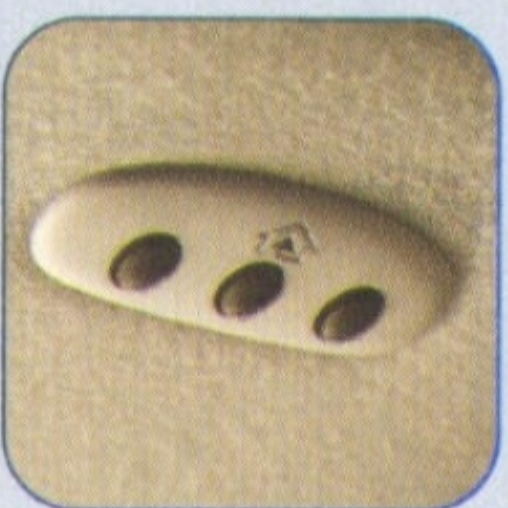
Bose® Nd™
Woofer Magnet



Increased
Horsepower



Active
Head Restraints



HomeLink®
Buttons

This is the final page of the new
Infiniti I30's Innovation section.

However, there is still plenty of

information we'd like to share

with you about our dedication

to creating unparalleled luxury

cars. All you have to do is visit

i30.infiniti.com/innovations

for more about the new I30's

innovative features and options.

The icons are there to help

you navigate through some

of its most impressive stories.

INFINITI TOTAL OWNERSHIP EXPERIENCE

By far the most important benefit of Infiniti luxury is The Total Ownership Experience®. Years before we ever built our first luxury car, we built this belief: That luxury is much more than a collection of features on an automobile. It is a way of doing business based upon building a lasting relationship. From the very moment you arrive at an



Infiniti retailer, we strive to exceed your expectations at every turn with our line of products and our people. You'll notice our commitment to your total satisfaction in everything we do, from the way we build our vehicles, to

the way we support them for years to come. As an Infiniti driver, you'll enjoy a host of useful services like 24-hour Roadside Assistance, a Complimentary Infiniti Service Loan Car and Trip Interruption Benefits.* Your ownership experience will be a complete one, extending from our showroom to our web site and beyond.

*Restrictions may apply. See page 46 for details.



COMMITMENT

A superior product representing excellent value. Presented in a unique environment. To honored guests who are treated with respect during the buying process. Who receive outstanding service throughout their ownership. And enjoy an ongoing relationship with knowledgeable people who are committed to ensuring their satisfaction.

SERVICE LOAN CAR PROGRAM

When you drop off your 2000 I30 for a scheduled maintenance appointment, an Infiniti Service Loan Car will be waiting for you, compliments of Infiniti. And when your I30 is returned to you, it will not only be running perfectly, it will look great, thanks to a complimentary car wash.*

*Restrictions may apply. See page 46 for details.

INFINITI OWNER'S CLUB

Infiniti's goal is to provide owners with a superior luxury vehicle and an outstanding ownership experience. To enhance this experience, we've created the Infiniti Owner's Club, which embodies our commitment to our owner's complete satisfaction in all facets of ownership, from our excellent products, to quality



service, to our comprehensive 24-hour roadside assistance. Additionally, Infiniti owners will have access to special values and discounts on travel, select merchandise and

premier events, such as the U.S. Open Tennis Tournament. All Infiniti Owners are eligible to participate and can gain access to the Owner's Club by going on-line and visiting infiniti.com/ownersclub or by calling the Owner Extras* toll-free number at 1-877-398-7277.

*All travel, goods and services described in Owner Extras are provided solely by Perks.com.



"Best Entry Luxury Car in Initial Quality"

Infiniti is dedicated to designing innovative automobiles. These innovations translate into many benefits to our customers. In addition, we are committed to providing the utmost standard of quality. Our vehicles have received a high degree of admiration from the automotive industry and their owners. Recently, the 1999 Infiniti I30 was ranked as the best Entry Luxury Car in Initial Quality by J.D. Power and Associates.

The Infiniti I30 was ranked as the best Entry Luxury Car in J.D. Power and Associates 1999 Initial Quality Study 2nd. Study based on a total of 41,004 consumer responses indicating owner reported problems during the first 90 days of ownership. www.jdpower.com

SPECIFICATIONS

BODY, DIMENSIONS

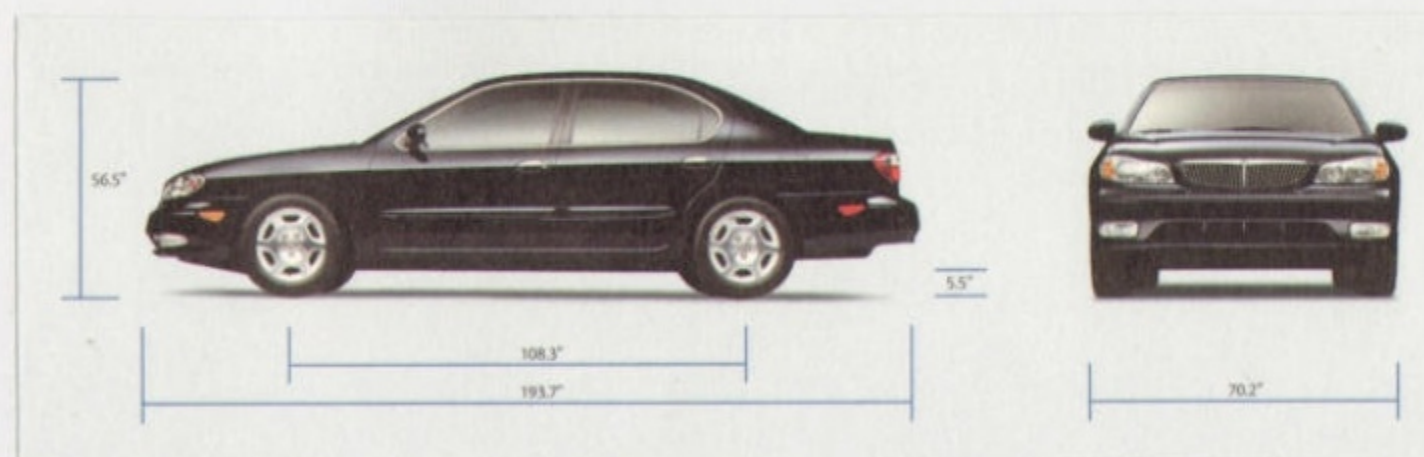
TYPE	Five-passenger luxury sedan
CONSTRUCTION	Laser-etched DURASTEEL® body
OVERALL LENGTH	193.7 in
WIDTH	70.2 in
HEIGHT (I30/I30t)	56.5 in/56.7 in
WHEEL BASE	108.3 in
GROUND CLEARANCE (I30/I30t)	5.5 in/5.9 in
CURB WEIGHT (I30/I30t)	3342 lb/3415 lb
FUEL TANK CAPACITY	18.5 gal
PASSENGER CAPACITY	102.0 cu ft
TRUNK CAPACITY	14.9 cu ft
HEAD ROOM (FRONT/REAR)	40.5/37.4 in
LEG ROOM (FRONT/REAR)	43.9/36.2 in
SHOULDER ROOM (FRONT/REAR)	56.4/56.2 in
HIP ROOM (FRONT/REAR)	54.3/53.0 in

CHASSIS

SUSPENSION	Independent front strut suspension with stabilizer bar, Rear Multi-Link Beam™ suspension with stabilizer bar
STEERING	Engine-speed-sensitive, power-assisted, rack-and-pinion steering, Turning circle diameter (curb-to-curb): (I30/I30t) 35.4 ft/40.0 ft, Overall Steering Ratio: 16.6:1
BRAKING	4-wheel power-assisted vented front disc brakes with Anti-lock Braking System (ABS), Brake rotor size (diameter/thickness) in front: 11.00" x 1.0" and in rear: 11.8" x 0.39"
WHEELS AND TIRES	16.0" x 6.5" Luxury aluminum-alloy wheels with P215/55R16 H-rated all-season radial tires (I30), 17.0" x 7.0" Sport aluminum-alloy wheels with P225/50R17 V-rated all-season tires (I30t)

ENGINE

TYPE	DOHC 24-Valve V6 aluminum-alloy block and cylinder heads
DISPLACEMENT	3.0-liters
HORSEPOWER (SAE NET)	227 hp @ 6,400 rpm
TORQUE (SAE NET)	217 ft-lbs @ 4,000 rpm
ENGINE REDLINE	6,550 rpm
COMPRESSION RATIO	10.0:1
BORE AND STROKE	93.0mm x 73.3mm
FUEL DELIVERY SYSTEM	Sequential multi-point fuel injection
RECOMMENDED FUEL	Premium unleaded
EMISSIONS CONTROL EQUIPMENT	Closed-loop feedback system, 3-way catalyst
MECHANICAL	2-stage engine cooling system; Electronically controlled liquid-filled front and rear engine mounts for reduced Noise, Vibration and Harshness; Liquid-filled side engine mount; Dual-tipped platinum spark plugs
ELECTRICAL	Direct ignition system with individual coils for each cylinder



PERFORMANCE

FUEL CONSUMPTION	4-speed automatic: 20/28 mpg (city/highway)
COEFFICIENT OF DRAG (I30/I30t)	0.30

*2000 EPA-estimated figures are for comparison purposes only. Actual mileage may vary depending on driving conditions. Figures for other models will vary. Please see your local Infiniti retailer for details.

SPECIFICATIONS AND FEATURES

DRIVETRAIN

TRANSMISSION	Electronically controlled 4-speed automatic transmission with lock-up torque converter	
DRIVE WHEELS	Front-wheel drive	
GEAR RATIOS:	First	2.785
	Second	1.545
	Third	1.000
	Fourth	0.694
	Reverse	2.272
FINAL DRIVE RATIO	3.789:1	

LUXURY

SEATING AND INTERIOR TRIM

Leather trimmed upholstery ■ Driver's 8-way power seat with manual adjustable lumbar support ■ Driver's memory seat system ■ Driver's automatic entry/exit system ■ Height adjustable outboard front and rear head restraints ■ Front seatback map pockets ■ Leather-wrapped steering wheel ■ Rear center fold-down armrest ■ Leather-wrapped transmission shift lever ■ 60/40 split fold-down rear seatbacks (lockable) ■ Fold-down rear center armrest ■ Wood-tone trim ■ Chrome inside door handles ■ Plush, cut-pile carpeting with embroidered floor mats

COMFORT AND CONVENIENCE

Automatic Temperature Control with CFC-free air conditioning ■ HomeLink® Universal Transceiver ■ Outside temperature display ■ Cruise-control with steering-wheel-mounted controls ■ Power sliding glass sunroof with tilt (optional delete feature) and power rear sunshade ■ Manual tilt steering ■ Center console with dual level storage and height adjustable armrest ■ UV and heat-reducing tinted glass ■ Rear window defroster with timer ■ Side window demisters ■ Power front windows with auto-up/down and safety reverse feature ■ 2-speed, variable intermittent wipers ■ Illuminated power window and door lock switches ■ Power door locks with selective unlocking feature ■ Remote, keyless entry with security system ■ Infiniti Vehicle Immobilizer System ■ Retained accessory power ■ Illuminated entry system with battery saver feature ■ Passenger assist grips ■ Front-door map pockets ■ Overhead map light ■ Five cupholders: three front and two rear ■ Instrument panel storage compartment ■ Dual illuminated visor vanity mirrors ■ Driver and front passenger sunvisor extenders ■ Automatic on/off headlights ■ Dual 12v power outlets ■ Power remote trunk release with cancel switch ■ Remote fuel-filler door release ■ Fully carpeted and illuminated trunk with convenience net ■ Automatic anti-glare rearview mirror

INSTRUMENTATION

Fine Vision electrofluorescent instrument lighting ■ Dual LCD trip odometers ■ Analog clock ■ Low fuel warning light ■ Door ajar warning light

AUDIO SYSTEM

Bose® 200-watt, 7-speaker audio system with AM/FM/cassette and in-dash CD player ■ Dual in-glass antennae with diversity system

SAFETY

Dual front supplemental air bags ■ Driver and front passenger head and chest side-impact supplemental air bags ■ Front seat active head restraints ■ 3-point front seat belts with pre-tensioners and load limiters ■ 3-point front and rear passenger seat belts with ALR/ELR ■ Front and rear crumple zones ■ Pipe-style steel side-door guard beams ■ Energy-absorbing steering column and knee bolsters ■ Child safety rear door locks ■ Rear parcel shelf child tether anchors

STYLING

Laser-etched DURASTEEL® construction ■ Energy-absorbing, body-color front and rear bumpers ■ Halogen headlights with jewel-type reflectors ■ Integrated fog and cornering lights ■ Body-color dual power outside mirrors ■ Bright side window moldings ■ Chrome exterior door handles ■ Stainless steel door sill plates ■ Luxury alloy wheels

Every I30 is equipped with dual front and front-seat head and chest side-impact supplemental air bags. Used in conjunction with the 3-point seat belts, they help reduce the risk or severity of injury in certain frontal and side impacts. Please keep in mind however, that air bags are a supplemental restraint system designed to work in conjunction with your seat belt. Proper seat belt and child restraint use is essential to minimize injury risk to occupants. See the vehicle owner's manual for details on proper seat belt and child restraint use. With a front-passenger air bag, a rear-facing child restraint must never be used in the front passenger's seat. An inflating air bag can cause serious or fatal injuries to a child in a rear-facing child restraint. Infiniti and the federal government recommend that children 12 and under should always be properly restrained in the rear seat. Remember, the risk of serious or fatal injury to children in automobile accidents can be reduced with a properly installed child restraint. Before you install a child restraint in your vehicle, please consult your Infiniti owner's manual. You should also follow the child restraint manufacturer's instructions for the correct use of the child seat and routing of the seat belt.

OPTION PACKAGES, WARRANTIES & ACCESSORIES

OPTIONS

HEATED SEATS PACKAGE	Heated front seats with two heat settings, and heated outside mirrors with timer
TRACTION CONTROL SYSTEM	Requires Heated Seats Package
INFINITI COMMUNICATOR SYSTEM	Factory installed
SPORT PACKAGE	Rear decklid spoiler, side sill spoilers (Touring Model only)
TOURING MODEL INCLUDES	17" alloy wheels, P225/50 R17 V-rated all-season tires, Viscous Limited-Slip Differential, sport-tuned suspension, High Intensity Discharge (HID) headlights with smoked headlight treatment

STANDARD INFINITI LIMITED WARRANTIES

- 4-year/60,000-mile basic coverage
- 5-year/50,000-mile New Vehicle Emission Control Warranty
- 6-year/70,000-mile Powertrain coverage
- 7-year/unlimited-mileage Corrosion coverage
- Lifetime Seat Belt Warranty
- Only Genuine Infiniti Accessories are covered by Infiniti's 4-year/60,000-mile basic coverage when purchased at the time of vehicle sale.
- Optional Infiniti Extended Protection Plan—offers coverage up to 7-years/100,000 miles

See your local Infiniti retailer for details and read the warranty booklet.

ROADSIDE ASSISTANCE PROGRAM*

4-year/unlimited-mileage includes: Trip Interruption Benefits, 24-hour toll-free customer assistance number, battery boost, lock-outs, flat tires, out-of-gas, accident towing

*Service coverage term 4-year/unlimited mileage.

SERVICE LOAN CAR PROGRAM

Complimentary Infiniti Service Loan Car available during scheduled maintenance appointments, at participating Retailers. Subject to availability. Available only during the 4-year/60,000-mile basic coverage. The client must be 21 years of age or older with a valid U.S. driver's license. The client must provide proof of primary insurance.

ONE FINAL OPTION TO CONSIDER

Instead of going to a bank to finance your Infiniti, come directly to us, Infiniti Financial Services. We offer competitive rates for our new and pre-owned vehicles, as well as a tempting *SignatureLEASE*® program. And since you'll be part of the Infiniti family, you'll be treated as such. With courtesy and respect.

RETAILER-INSTALLED ACCESSORIES

■ Air bag anti-theft bolt ■ 6-disc CD autochanger ■ Battery warmer ■ Vehicle cover ■ Engine block heater ■ All-seasons (rubber) mat ■ In-cabin microfilter ■ Painted rear spoiler ■ Splash guards ■ Sunroof wind deflector ■ Trunk mat ■ Trunk organizer ■ Wheel locks ■ To see color photos of these accessories please visit i30.infiniti.com/specs

All illustrations, photographs and specifications in this catalogue are based on the latest product information; some vehicle parts cannot be shown in certain photographs. Some vehicles shown with optional equipment. See actual vehicles for complete accuracy. Infiniti Division of Nissan North America, Inc. reserves the right to make changes at any time, without notice, in prices, colors, materials, equipment, specifications and models, and to discontinue models or equipment. Availability and delivery time for particular models and equipment combinations may vary. For information on availability, additional options or accessories, contact your Infiniti retailer. All specifications, options, and accessories shown in this catalogue apply to the 49 continental states. Specifications, options and accessories may differ in Hawaii, U.S. territories and other countries. Bose® is a registered trademark of Bose Corporation. HomeLink® is a registered trademark of Prince Corporation. Motorola® and MicroTac® are registered trademarks of Motorola, Inc.

EXTERIOR COLORS



ASPEN WHITE PEARL

PEARL

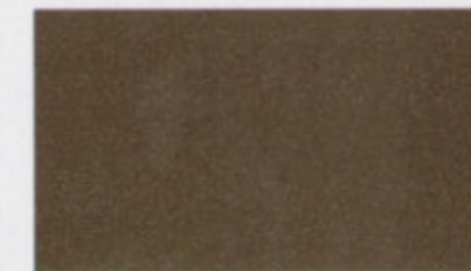
Interior colors:

I30

beige leather
sage leather

I30t

beige leather
black leather
sage leather



AUTUMN BRONZE

PEARL

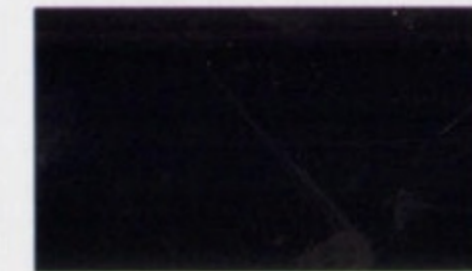
Interior colors:

I30

sage leather

I30t

black leather
sage leather



BLACK OBSIDIAN

SOLID

Interior colors:

I30

beige leather
black leather
sage leather

I30t

beige leather
black leather
sage leather



BORDEAUX PEARL

PEARL

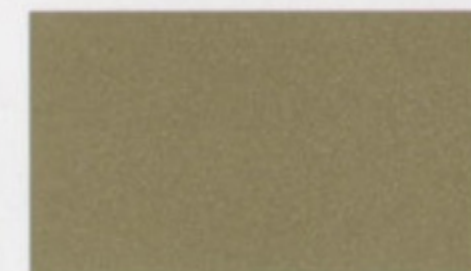
Interior colors:

I30

beige leather

I30t

beige leather



MILLENNIUM JADE

METALLIC

Interior color:

I30

sage leather

I30t

sage leather



MONTEREY GREEN

PEARL

Interior color:

I30

beige leather

I30t

beige leather



SANDROCK BEIGE

METALLIC

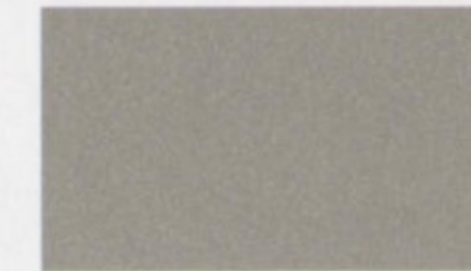
Interior color:

I30

beige leather

I30t

beige leather



TITANIUM

METALLIC

Interior colors:

I30

black leather
sage leather

I30t

black leather
sage leather

Infiniti has taken care to ensure the color swatches presented here are the closest possible representation of actual vehicle colors. Swatches may vary slightly due to the printing process and whether viewed in daylight, fluorescent or incandescent light. Please see the actual colors at your local Infiniti retailer.





Own one and you'll understand.™