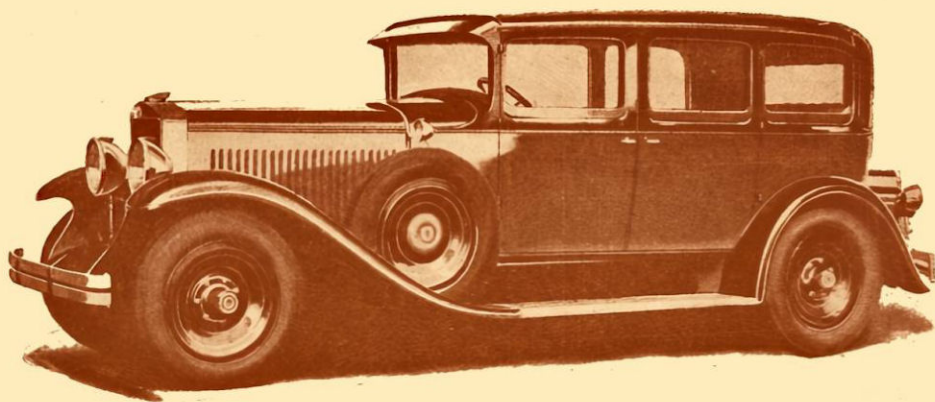




Graham Paige's symbol of
che and harmonious
purpose



A series of automobiles to which we have proudly given our name

A series of completely new automobiles bearing the GRAHAM PAIGE name, which represent the three GRAHAM brothers' modern automobile structure and design principles, were presented to the public for the first time at the New York Auto Show in January and in Finland at the end of March.

These GRAHAM-PAIGE wagons are available in a wide selection of different chassis and body models, the price ratios of which put them practically within the reach of every class of car buyer.

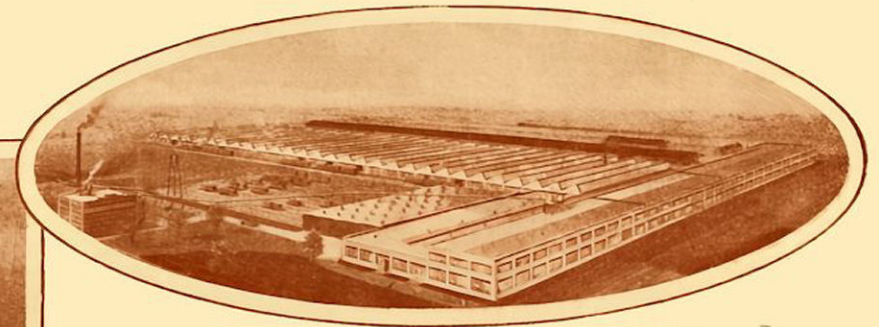
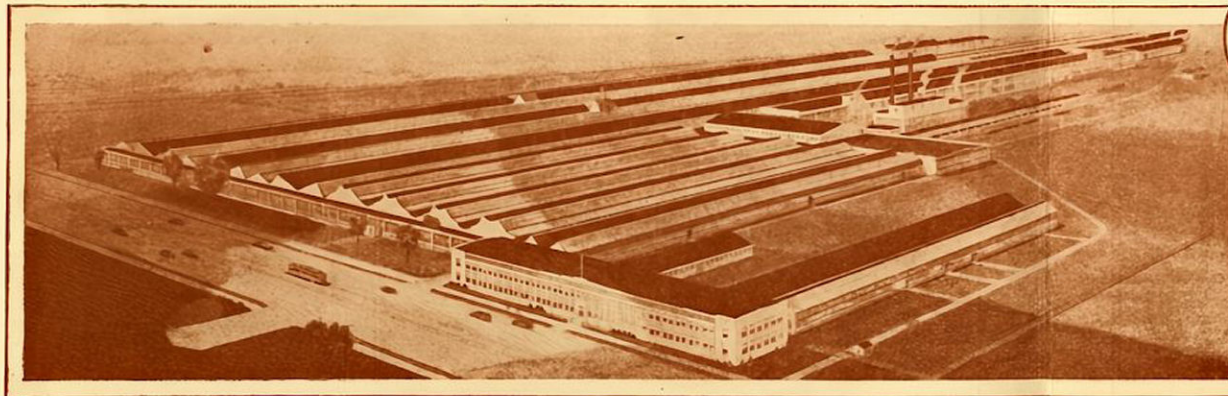
This new car brand is the result of the work of three men; of three brothers who have worked together for twenty-five years and have achieved considerable success in the automotive industry. They organized the GRAHAM BROTHERS factory, and developed it into the largest truck factory in the world. After joining the DODGE brothers, they managed the production and sales of Dodge cars, during which time they gained in-depth experience in passenger cars.

*Joseph B. Graham
Robert C. Graham
Ray A. Graham.*

in the field. In April 1926, after selling all their shares in the famous factories, they parted ways.

Since last June, when these three GRAHAM brothers acquired a leadership position in the PAIGE factory, they have greatly increased the financial strength and production capabilities of this factory, thus preparing the introduction of a new car bearing their name.

Being the result of advanced and sophisticated engineering skills and weighted throughout in the most modern factories, where the weight characteristics can be combined with economically advantageous forms of production, GRAHAM-PAIGE wagons are in every respect suitable to serve car users all over the world and meet their requirements.



GRAHAM-PAIGE main plant in Detroit, and the recently purchased body plant in Wayne, Mich. provide 1,125,670 square feet of floor space to be used for manufacturing GRAHAM-PAIGE cars.

GRAHAM-PAIGE

cars are offered in five different chassis models, four with six cylinders and one with two 16-cylinder models, of which the descriptions of the six-cylinder models follow

MODEL 610.

Wheelbase- 110 1/2" (2.81 m.)

Engine-GRAHAM-PAIGE, 6-cylinder, diameter 2", stroke length 4 1/2", volume 175 cubic inches (2.87 liters), power 52 hp. Seven-bearing crankshaft, diameter 2 1/2", statically and dynamically balanced. Light-metal pistons with terrace interior, power transmission to the camshaft with a silent chain. High-pressure lubrication for bearings and valve lifters. Cylinders cooled along their entire length, water circulation with a centrifugal pump.

Fuel supply with a — mechanical fuel pump that guarantees a sufficient amount of fuel in all conditions.

Clutch dry single disc clutch, light, easy to use. The clutch and brake levers are adjustable.

5-person Sedan closed wagon 2 Coupe
 5 * Touring *
 * open wagon

Gearbox - three forward gears, one for reverse.

Brakes LOCKHEED four-wheel fluid brakes.

Springs — semi-elliptic, front-sä 36", rear 54" long. Hexdee shock absorbers with kai-kissa springs.

Body in pressed steel, height 51 1/2", strongest cross seat braced.

Tires 29x5.00 low-pressure tires.

Equipment with indirectly lit instrument panel: speedometer and odometer, ammeter, oil pressure gauge, fuel gauge, cooling water thermometer, air purifier, Rearview mirror, auto. windshield dryer, front and rear bumpers, spare rim with tires. Usual tools.

MODEL 610.

Wheelbase 114" (2.90 m)

Engine-GRAHAM-PAIGE, 6 cylinders, bore 3 1/2", stroke 4 1/2", volume 207 cubic inches (3.4 liters.), power 71 hp. Seven-bearing crankshaft, diameter 2 1/2", statically and dynamically weight-balanced. Light-metal pistons with steel interior, power transmission to the camshaft with a silent chain. High-pressure lubrication

for bearings and valve lifters. Cylinders cooled along their entire length, water circulation with a centrifugal pump, thermostatic control.

Fuel supply with a — mechanical fuel pump that guarantees a sufficient amount of fuel in all conditions.

The clutch is a dry single-disc clutch, light, easy to use, the clutch and brake levers are adjustable.

Gearbox 4 forward gears and one for reverse. As a result, the possibility to reach higher

speeds comfortably, at a low engine speed and thus with lower fuel and oil consumption, with the cooling being even more efficient.

Steering wheel adjustable for driving comfort. Brakes LOCKHEED four-wheel fluid brakes; automatic pressure-adjusting main cylinder.

Springs semi-elliptic, front-sä 36", rear 58" long; Watson shock absorbers with cat springs.

Frame made of pressed steel, height 51 7/8" - stiffened with four transverse supports. Tires 29x5.25 low-pressure tires.

Equipment-indirectly illuminated-on the instrument panel speed and odometer, ammeter, oil pressure gauge, fuel gauge, cooling water temperature gauge. Oil and air cleaners. Rearview mirror, auto. wind glass dryer. Front and rear bumpers, spare rim with tires. Conventional tools. closed wagon

5-seater Sedan 2-4, Coupe

MODEL 619.

Wheelbase 119" (3.02 m)

Tires 29x5.50 low-pressure tires.

Equipment on the indirectly lit dashboard: speedometer and odometer, ammeter, oil pressure gauge, fuel gauge, cooling water temperature gauge, electric clock. Oil and air cleaners, mirror and auto. windshield **Taka-**kui-vaja. Front and rear bumpers, spare wheel with tires. Custom tools.

5-person Sedan wagon 4 Coupe

Fuel supply with a mechanical fuel pump, which guarantees a sufficient amount of fuel in all conditions.

The clutch is a dry double-disc clutch equipped with a vibration eliminator. Light and easy to use, the clutch and brake levers are adjustable.

Gearbox - 4 forward gears and one for reverse. Guarantees the possibility to reach comfortably even high speeds, while the engine speed remains low and fuel and oil consumption are low. Cooling even more efficient.

Steering wheel — adjustable for driving comfort.

Brakes - LOCKHEED internal, protected four-wheel fluid brakes, powerful and safe; automatically pressure regulating master cylinder.

Springs semi-elliptic, front 38" rear 58" long, Watson shock absorbers on all springs.

Frame made of pressed steel, height 7", the strongest, thickly stiffened crossbar.

MODEL 629.

Wheelbase 129" — (3.28 m)

Tires 31x6.00 low-pressure tires in 5-passenger wagons, 31x6.20 low-pressure tires in 7-passenger wagons.

Equipment on the indirectly lit instrument panel: speedometer and odometer, ammeter, oil pressure gauge, fuel gauge, cooling water thermometer, electric clock. Oil and air purifiers. Rear view mirror and auto. windshield dryer. Front and rear bumpers. Two locked spare pyös with rings placed on the sides in front. Rear luggage rack. Conventional tools.

5-person Sedan closed wagon Sedan
 5 * Town Sedan *

REPRESENTATIVE IN MIKKEL:

Doctor Hannes Kartasalo,

Main representative in Finland: AUTOLA Oy., Helsinki.