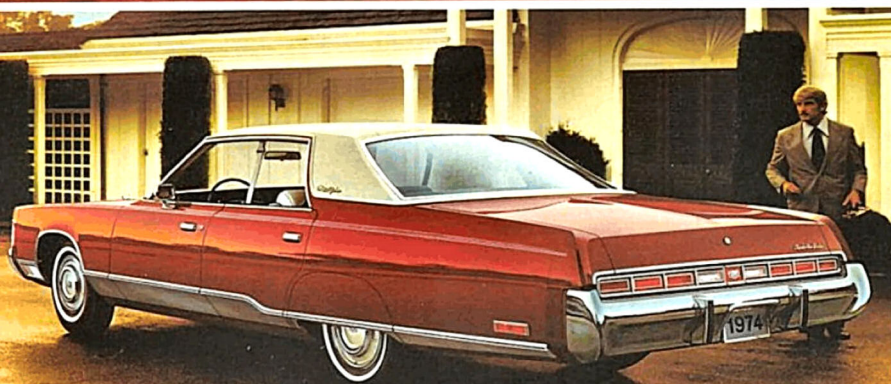


# 1974 Specifications Chrysler

*New Yorker Brougham/New Yorker/Newport Custom/Newport/Town & Country*



# Chrysler

## Standard Equipment

ALTERNATOR—50 Amp. Hour with Transistorized Voltage Regulator  
 ANTI-FREEZE—Glycol Base—25°  
 \*ANTI-RUSTS—Front and Rear, Padded  
 ASH RECIPIVERS—Instrument Panel (Driver and Passenger side) and Rear Armrests  
 BATTERY—375 Amps. Newport and Newport Custom.  
 440 Amps. All Other Models  
 \*BODY—Unibody Construction. Combines Body and Frame Into One Strong Solid Unit. 7-Stage Rustproofing  
 \*BRAKES—Dual Braking System. Power Assisted and Self Adjusting Front and Rear.  
 Front Floating Caliper Disc.  
 Rear: Drum Type with Bonded Linings  
 \*BUMPER—Hydraulic Bumper System. Sustains Barrier Impacts at Speeds up to 5 m.p.h. Front & Rear  
 CARPET—Colour Keyed Front and Rear Passenger Compartments, Trunk, Grey and Black Print Rubber Mat. (Newport, Newport Custom)—Carpet (New Yorker and New Yorker Brougham)  
 \*COAT HOOKS—Left and Right Side of Special Soft Plastic  
 COILANT RESERVE SYSTEM  
 DOOR CHECKS—2 Position on all Doors  
 EMISSION CONTROLS—See Engine Specifications  
 HEADLINING—Washable. Long Wearing Vinyl  
 HEATER/DEFROSTERS—With Upper Level Ventilation  
 HORNERS—Dual  
 IGNITION—Electronic Ignition System Eliminates Breaker Points and Condenser. Reduces Tune-Ups and Emissions. Provides Easier Starting  
 INSTRUMENT PANEL AND CONTROLS—Padded. Recessed Controls. Variable Intensity Lights. Parking Brake Release. Bin Type Glove Box with Integral Coin Holder. Glove Box Lock. Cigar Lighter. Master Cylinder and Park Brake Warning Indicator. Key-Off Ignition Warning Buzzer. Seat Belt Warning Light  
 INSIDE HOOD RELEASE  
 INSULATION—Special Insulation and Seals on Hood, Doors, Dash Panel, Roof, Trunk. Floor Pan Help Keep Out Noise and Heat  
 \*LIGHTS—Dual Headlights, Tail Lights, Stoplights and Backup Lights, Side Marker Lights and Reflectors, Parking Lights, Turn Signals and 4-Way Emergency Flasher. Passenger Compartment Light, Actuated by Front and Rear Doors  
 \*MIRRORS—Outside Rear View, Left Mounted, Prismatic, Day/Night, Ball-Joint Inclusive with Energy Absorbing Lip Around Edge of Glass. Windshield Mounted on Sedans and Hardtops  
 PAINT—18 colours in Durable Sparkling Acryluster Finish  
 Powder Blue Silver Frost Metallic  
 Lucerne Blue Metallic Burnished Red Metallic  
 Spinnaker White Golden Haze Metallic  
 Formal Black Tahitian Gold Metallic  
 Frosty Green Metallic Dark Chestnut Metallic  
 Sahara Beige Starlight Blue Metallic  
 Sunfire Yellow Deep Sherwood Metallic  
 Golden Fawn Avocado Gold Metallic  
 Sienna Metallic Dark Moonstone Metallic

\*SUN VISORS—Left and Right. Padded Swivel Type  
 \*STEERING—Power Assisted. 3-Spoke Wheel with Vinyl Horn Pad and Woodgrain Appliqué. Impact Absorbing Wheel and Steering Column. Steering Column Lock  
 SUSPENSION—Torsion-Quiet Ride. Special Group of Rubber Bushings on Frontstructure. Steering Mechanism, Torsion Bars and Rear Springs Greatly Reduce Road Noise. Front Sway Bar Front: Torsion Bars Rear: Leaf Springs Shock Absorbers: Onflow  
 TRANSMISSION—Automatic 3-Speed TorqueFlite  
 \*WHEELS—15" Safety Rim  
 WHEEL COVERS—Deluxe  
 \*WINDSHIELD—Heavy Laminated Glass. Prevents Inside Shattering  
 \*WINDSHIELD WASHERS—Dual Electric  
 \*WINDSHIELD WIPERS—Dual with Overlap  
 Wipe Pattern  
 WINDOWS—Ventless Side Windows

## Additional Standard Equipment for Specific Models

NEW YORKER  
 Light Package for Extra Safety and Convenience. Left Mirror Control Outside Mirror, 3-Speed Wipers, 440 Amp. Battery, Electric Clock, Undercoating and Hood Silencer Pad, Hood Ornament, Fender Skirts, Fender Mounted Turn Signals, Luggage Compartment Carpet, Special Interior Trim Features, Body-side Dual Paint Stripe, JR7815 Whitewall Steel Belled Radials  
 NEW YORKER BROUGHAM  
 Same as New Yorker plus Power Windows, Additional Warning Lights and Indicators, Automatic Parking Brake Control Release and Brougham Ornamentation  
 TOWN AND COUNTRY  
 Three Way Tailgate, Roof Rear Wind Deflector, Cargo Compartment Carpet, Electric Tailgate Window, Automatic Tailgate Lock, Woodgrain Trim on Body Side and Tailgate Area

## Seat Availability by Model

Model	Standard	Material	Optional	Material
Newport	Bench	Cloth & Vinyl	Bench	Vinyl
Newport Custom	50/50 Split Bench with Individual Front Armrests	Cloth & Vinyl	50/50 Split Bench with Individual Front Armrests	Vinyl
New Yorker	Bench with Centre Armrest	Cloth & Vinyl	Bench with Centre Armrest	Vinyl
New Yorker Brougham	50/50 Split Bench with Individual Front Armrests	Cloth & Vinyl	50/50 Split Bench with Individual Front Armrests	Vinyl
Town and Country	50/50 Split Bench with Individual Front Armrests	Vinyl	50/50 Split Bench with Individual Front Armrests	Cloth & Vinyl

## Selected Optional Equipment

AIR CONDITIONING—Front Unit Only—With Automatic Temperature Control Front Unit  
 AUTOMATIC SPEED CONTROL  
 CORNERING LAMPS  
 DEFOGGER—Rear Window. Not Available on Wagons  
 ENGINE BLOCK HEATER  
 ELECTRONIC DIGITAL CLOCK  
 GLASS—Tinted. Windshield only or all Windows  
 LUGGAGE RACK—Wagons Only  
 MIRROR—Remote Control Right Outside  
 MOULDINGS—Vinyl Body Side Protection Moulding (Newport and Newport Custom)  
 PACKAGINGS—There are Many Special Package Items Engineered for Special Applications. See Your Dealer for Full Details. These Packages Include Light and Heavy Duty Trailer Towing Packages, Wagon Convenience Package  
 POWER ASSISTED WINDOWS (Std. New Yorker Brougham), Seats, Door Locks, Inside Deck Release (Except Wagons)  
 RADIO—AM Push Button AM/FM Monaural, AM/FM Multiplex with Search Tuner, AM/FM Multiplex with 8-Track Stereo Tape, Rear Seat Speaker, Power Antenna  
 SECURITY ALARM SYSTEM—Lights and Horn Pulse with Illegal Entry of Engine, Passenger or Trunk Compartments  
 STEERING COLUMN—Tilt and Telescopic with Rim Blow Steering Wheel  
 SUSPENSION—Heavy Duty with Front Sway Bar, Heavy Duty 1" Shocks  
 SUN ROOF—Power Operated (Except Wagons)  
 TRIMS—Wide Range Available Including Fibreglass Belled, Whitewall Steel Belled Radials  
 VINYL ROOF—Except Wagons  
 UNDERCOATING AND HOOD SILENCER PAD—Std. New Yorker and New Yorker Brougham  
 WINDSHIELD WIPERS—3-Speed (Newport and Newport Custom)  
 VENT WINDOWS—Front Side, Manually Operated, 4-Door Models Only  
 THERE ARE MANY OTHER OPTIONS AVAILABLE. SEE YOUR DEALER.

# Chrysler—Basic Specifications

Exterior Dimensions	4-Door Hardtop	4-Door Sedan	2-Door Hardtop	Station Wagon
	Wheelbase	124.0"	124.0"	124.0"
Overall Length	225.0" (a)	225.0" (a)	224.7"	224.7"
Overall Width	79.5"	79.7"	79.4"	79.4"
Overall Height	55.3" (b)	54.7"	59.1"	59.1"
Track—Front	64.0"	64.0"	64.0"	64.0"
Track—Rear	63.7"	63.7"	63.7"	63.7"
Road Clearance	5.9"	5.9"	6.7"	6.7"
Approximate Shipping Weight (lbs.)	4480 (c)	4380	4915	4970
			(2-Seat)	(3-Seat)

(a) New Yorker & Brougham 224.6"  
 (b) 4-Door Hardtop 54.7"  
 (c) 4-Door Hardtop 4500

## Luggage Capacity

Usable space (cu. ft.)	21.6 (a)
Usable length	64.3"
Usable width	77.0"
Loading height	27.7"

(a) New Yorker & New Yorker Brougham 19.4

Interior Dimensions	4-Door Hardtop	2-Door Hardtop	Station Wagon
	Effective head room—front	38.7" (a)	37.9"
—rear	38.5" (b)	37.7"	40.5"
Effective leg room—front	42.2"	42.2"	42.2"
—rear	39.9"	39.9"	38.8"
Shoulder room—front	61.5"	61.5"	61.5"
—rear	61.6"	61.6"	61.6"
Hip room—front	61.8"	61.8"	61.8"
—rear	61.4"	61.4"	61.4"
Entrance height—front	30.3" (c)	29.9"	30.3"
—rear	30.1" (d)	—	30.0"
Seat height—front	9.2"	9.2"	9.2"
—rear	11.5"	10.7"	11.5"

(a) 4-Door Hardtop 37.9" (d) 4-Door Hardtop 29.4"  
 (b) 4-Door Hardtop 37.7"  
 (c) 4-Door Hardtop 29.9"

## Cargo Compartment—Station Wagons

Height—floor to roof at tailgate opening	26.2"
Length—2nd seat to end of open tailgate	81.5"
—2nd seat to closed tailgate	58.7"
—front seat to end of open tailgate	120.7"
—front seat to closed tailgate	97.7"
Width—floor at tailgate opening	47.6"
—floor between wheelhouses	48.5"
—at beltline and at top	51.1"
Tailgate loading height	28.5"
Cargo volume (cu. ft.)	100.8

# Engine and Transmission Specifications

## Engine Specifications

Displacement (cu. in.)	400	400	440
Bore (in.)	4.34	4.34	4.32
Stroke (in.)	3.38	3.38	3.75
Installed Net Horsepower @ R.P.M.	185 @ 2400	205 @ 4400	230 @ 4000
Installed Net Torque (lb. ft.) @ R.P.M.	315 @ 2400	310 @ 2400	350 @ 3200
Compression Ratio	8.2 to 1	8.2 to 1	8.2 to 1
Carburetor	1-2 bbl.	1-4 bbl.	1-4 bbl.
Air Cleaner	Silenced	Silenced	Silenced Single Snorkel
Exhaust	Single	Single	Single
Fuel Recommended	Regular	Regular	Regular

## Engine Application by Model

Newport  
 Newport Custom  
 New Yorker  
 New Yorker Brougham  
 Town & Country

## Transmission Application by Engine

TorqueFlite—3-Speed Automatic

## Electronic Ignition System Emission Control Systems

Closed Crankcase Ventilation	Std.	Std.	Std.
Air Preheat and Evaporative Control and Charcoal Canister	Std.	Std.	Std.
Automatic Vacuum Spark Advance	Std.	Std.	Std.
Exhaust Gas Recirculation	Std.	Std.	Std.
Electric Assist Choke	Std.	Std.	Std.

# Chrysler

The 1974 Chrysler is a totally new expression of an idea that has never changed. The idea is that you buy a luxury car for its extraordinary convenience, comfort and beauty. The 1974 Chrysler measures up in every way.

If beauty is in the eye of the beholder, behold Chrysler. The exterior lines are crisp and contemporary. They pamper your sense of good taste. And inside there's new interior elegance and richness.

The ride is superbly quiet... Torsion-Quiet. Chrysler's Unibody construction is strong and solid and helps to minimize squeaks and rattles. A host of sound isolating elements reduce outside road noise to a whisper. Control is sure and firm due to torsion bar suspension up front.

An Electronic Ignition System which has no points or condenser to replace at tune-up time saves you money; and due to the fact that it delivers a consistently higher voltage, makes for fast starts even on cold, wet days. It's practically maintenance-free.

There's a lot more to the Chrysler value, convenience, comfort and luxury story. Drive one and learn for yourself the difference that extra care in engineering makes. You'll appreciate it!



Newport Custom 4-Door Hardtop



Chrysler Town & Country Wagon



Newport 2-Door Hardtop and 4-Door Sedan

MODEL AVAILABILITY	2-Door Hardtop	4-Door Sedan	4-Door Hardtop	2-Seat Wagon	3-Seat Wagon
Newport	X	X	X		
Newport Custom	X	X	X		
New Yorker		X	X		
New Yorker Brougham	X	X	X		
Town and Country				X	X



Standard Trim—N.Y. Brougham



Standard Trim—Newport Custom



Optional Trim—Newport

All product illustrations and specifications are based on authorized information. Although descriptions are believed correct at publication approval, accuracy cannot be guaranteed. Some of the equipment shown on product illustrations is optional, at extra cost. Chrysler Canada Ltd. reserves the right to make changes from time to time, without notice or obligation, in prices, specifications, colours and materials, and to change or discontinue models.

Printed in Canada.

CHS-74-E



Extra Care in Engineering  
...it makes a difference.