

CAVALIER



1 9 8 6 C H E V R O L E T

1986 Cavalier. The Hot One's Even Hotter.

In today's wonderfully competitive market, Chevrolet Cavalier is the best-selling car in America. Precision assembly methods, refined road manners and zesty performance have sent Cavalier to the very top of the sales charts.*

Cavalier's always been fun to drive, and this year that fun

takes on new dimensions with the RS series. Every detail is integrated. Beautifully. There's black-accented exterior trim, a hot red stripe located within the standard body side molding, along with distinctive identification and body-color bumpers. The standard F41 suspension gives RS the feel of a sport sedan, while the 2.0 Liter engine with Electronic Fuel Injection gives it the response. The RS is available in all five Cavalier body styles, including an elegant convertible.

There are additional reasons why Chevy Cavalier is number one on the sales charts: the affordable base coupe, sedan, and station wagon models. In the popular CS 4-Door Sedan version, Cavalier offers an appealing combination of big-car appointments and trim exterior dimensions that is practical but never dreary. The family-pleasing CS Wagon and CS Hatchback models, with standard fold-down rear seat, deliver more cargo capacity than many full-size sedans.

Then, for those enthusiasts who want it all, we've built an inspired new Cavalier called Z24. In a word, it's half Equipment includes 14" Eagle GT tires, "ground-effects" skirting all around, electronic instrumentation and a 4-speed manual transmission. The heart of Z24 is a 2.8 Liter V6

with Multi-Port FI that's convinced it's a V8.

Cavalier for 1986. More reasons to choose the car that America has driven to the top.

*Based on figures compiled by Ward's Automotive Reports, January 1984-June 1985.

Body Styles

	Cavalier	CS	RS	Z24
2-Door Coupe	■		■	■
2-Door Hatchback Coupe		■	■	■
2-Door Convertible			■	■
4-Door Sedan	■	■	■	
4-Door Station Wagon		■	■	

Cavalier RS Sedan.





Cavalier CL Custom Interior. The Inside Story.

You already know Cavalier is America's best-selling car line. You're looking at one of the most important reasons why.

Here's comfort that's obvious from the moment you slide behind the wheel. You'll settle into firm, foam cushioning in the beautifully contoured front buckets. You'll appreciate the plush new CL seat cloth, too. Attaining your optimal driving position is as easy as adjusting the reclining front seat back.

Or, if you've chosen the available six-way adjustable seat, do it all electronically with the touch of a button.

Then, close out the world and take off. Road and wind noise become almost a whisper, as Cavalier's tight construction, enhanced by the Quiet Sound Group included in the available CL package, helps to isolate you from the world outside.

Now is when—and this is where—you'll really appreciate the smooth ride delivered by Cavalier's advanced chassis and its computer-selected spring rates. At your side is a full floor console, included with the standard 4-speed manual transmission and the available 5-speed manual* or automatic. Around you are important standard amenities—side window defoggers, constant outside air provided by the flow-through ventilation system, portal-to-portal carpeting, day/night rearview mirror.

The extensive list of available options, including Comfortilt steering wheel, power door locks, air conditioning, and a superb selection of GM-Delco audio equipment, lets you add a personal touch to Cavalier. All of which makes Cavalier CL one environment you'll look forward to getting into every time you're ready to get away.

*2.0 Liter I-4 engine only

Cavalier CL Coupe Interior.

RS Coupe instrument panel.
Cavalier RS Coupe.



Cavalier RS. Motion Becomes Emotion.

Choosing a new car is a big decision. Step into the new Cavalier RS and you'll know you've made the right one.

Command the throttle controlling the standard 2.0 Liter engine with Electronic Fuel Injection and feel Cavalier's front drive pull you away smoothly, surely.

Run the standard 4-speed (or available 5-speed*) manual through the gears and feel the engine's quick response.

A response equalled by Cavalier's sophisticated road-tracking, enhanced for 1986 with wider 13" all-season steel-belted radial tires, sport suspension and power steering—all standard.

Settle into the spacious cockpit and find out how good the open road can feel. Cloth upholstery, reclining front bucket seats—contoured for extra support and foam-cushioned for extra comfort—are all standard.

Cavalier RS. The accent is an excitement.

*3-speed automatic also available



RS Coupe's vacation-sized trunk offers 13.2 cubic feet of load space.

Cavalier RS Convertible. An Open Invitation to the Road.

You've been through the pre-drive checklist so often, it's become instinctive. Yet it's a procedure that never fails to thrill you. Sun: Up. Shades: On. Safety belt: Fastened. Front bucket: Back. Ignition: On. Retainer latches: Free. Motor:

Engaged. Top: Down. Road: Calling. You: Gone. That's all it takes to open up a Cavalier RS Convertible. An electric motor lowers the top at the push of a button; power windows are also standard. Together, these features let you discover the real meaning of

solar power. Then you release the available 2.8 Liter V6 with Multi-Port FI (2.0 Liter L4 with EFI standard) and feel the eager response as you run smoothly through the gears of the standard 4-speed manual (3-speed automatic transmission available*).

The open road won't cool Cavalier down, either. Power steering, front drive, fat 13-inch tires and sport suspension—all standard—let you enjoy sun on the run. In the fun one, Cavalier RS Convertible. *5-speed manual available with 2.0 Liter engine.



Cavalier RS Convertible.





New Cavalier Z24. Camaro Z28 Is Its Big Brother.

Cavalier has something new to show other drivers this year: its rear bumper. Going away.

Because with the new Z24 series, Cavalier boosts itself from the realm of driving fun into the world of performance.

Z24 takes off as the ultimate Cavalier. The snappy 2.8 Liter V6 with Multi-Port Fuel Injection is standard and it's teamed with a smooth-shifting 4-speed manual (3-speed automatic is also available).

But it took a lesson in handling from Camaro Z28, by stiffening up the suspension with heavier anti-sway bars, higher-rate springs and shock valving, and sticky 14" Eagle GT radials.

Then it took a lesson in aerodynamics, with Z28-like "ground-effect" panels, left and right. Dropped down at the nose with a snarling front-air dam, cocky in back with an available tossed-up rear-end spoiler.*

New Z24. Two-door coupe or hatch. The hot ones.

*Hatchback coupe only.

Cavalier Z24 Coupe and Hatchback.

Cavalier Z24 Driver Information Center. Calculations to Match The Acceleration.

New Z24 isn't just quick outside. It's quick inside.

Because what good is performance if a car doesn't tell you what to do with it?

One look at Cavalier Z24's Control Center, and you know.

Vital information is called out electronically on a screen specially canted to reduce glare and reflection, so the driver can pick up engine and road speed at a glance. Vital data, monitored by a 16K computer deep within the heart of the 2.8 Liter V6 where it can keep track of nine different functions simultaneously, are updated 80 times each operating second. Other driver functions, such as control of headlamps, windshield wipers-washers, are arranged about the periphery of the steering wheel, where the driver's fingers can reach out and engage them without the hand ever leaving the wheel.

Below the instrument panel and to the right sits the available GM-Delco Electronically Tuned Receiver (ETR™), equipped with convenient seek-and-scan feature to pass over the stations you don't want and lock into the one you do. Digitally equalized, it provides a rich sound equalled only by the tuned note of Z24's V6 engine. Calculated to captivate, from inside out. That's the new Cavalier Z24.

Cavalier Z24 instrument panel.

With Z24 you get 4-on-the-floor, standard.





Cavalier CS Sedan.

Cavalier CS Sedan. Trim. Nimble. Accommodating.

Imagine the comfort and appointments of a larger vehicle inside a trim, sophisticated piece of machinery and you've got an idea of what has made the CS Sedan America's favorite Cavalier.

Inside, enjoy the firmness of full, foam-cushioned,

orthopedically designed front bucket seats. In the rear, a generous 34 inches of leg room that make long trips seem a little less long. Underneath, variable-rate springs that adjust automatically to load, maintaining Cavalier's riding comfort.

And that's just for the riders. For the driver, Cavalier CS offers a color-keyed instrument panel with easy-to-read gauges and conveniently located controls. Everything is right where

you want it, from the available GM-Delco sound systems to the standard console-mounted shift lever.

Equally impressive is the response of the standard 2.0 Liter engine with Electronic Fuel Injection. Teamed with a 4-speed manual transmission (5-speed manual and 3-speed automatic available), it provides power as smooth and sure as Cavalier's ride. Trim exterior dimensions and rack-and-pinion steering mean

you'll never have to wrestle to maneuver, while front drive and all-season steel-belted radials help give Cavalier surefooted confidence.

Cavalier CS. Where performance and comfort come together in exceptional fashion.





RS Wagon interior.
Cavalier RS Wagon.

Cavalier RS Wagon. The New American Sport Wagon.

You know what you're going to put into a wagon. And with Cavalier RS, you can put a lot into it.

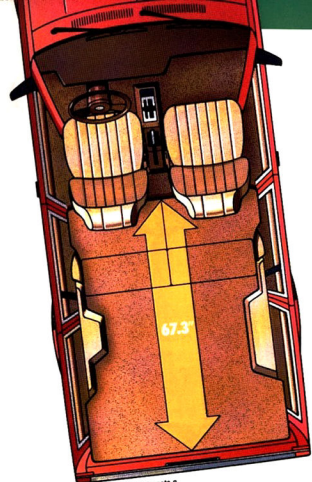
But before you put anything in, look what we put in. Stan-

dard sport suspension to let you unravel curves. A standard 2.0 Liter engine with EFI, plus 4-speed manual transmission (3-speed automatic and 5-speed manual available), to let you take on the expressway.

Front drive for better traction. All-season 13-inch tires. Power steering for tight spaces. Fully reclining front bucket seats. All inside a shape that's anything but what most people think a wagon looks like.

We loaded up the Cavalier RS Wagon. So you can get a lot out of it. Even if you never put anything into it.





Cavalier CS Wagon boasts a 67.3-inch load floor.

Cavalier CS Wagon. For Loads of Fun.

Start by ordering your Cavalier CS Wagon with the available split, fold-down rear seat, and all at once you've got a lot more than just a wagon.

With both rear seats down, you've got Cavalier CS at its biggest. With room up front for two and space in back for 64 cubic feet of stuff—more than a full-size sedan.

Flip one rear seat up and you've got a three-seater, with an L-shaped load space to haul anything from gardening equipment to bicycles.

Put both rear seats up and you've got a five-passenger car with a cargo area roomy enough for up to 34 cubic feet of luggage.

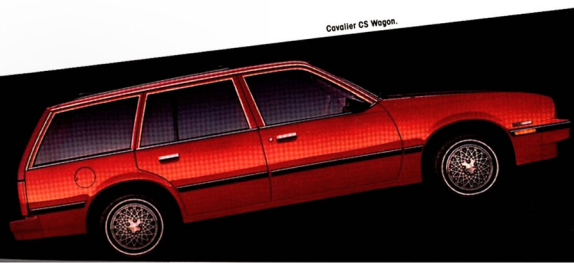
Now, match that with Cavalier's standard, fully reclining front buckets and available cloth trim.

And the best thing about them is they're all Cavaliers.



CS Wagon interior with reclining front bucket seats and available cloth trim.

Cavalier CS Wagon.



Features and Options.

Optional Equipment Appearance and Protection

- CL Custom Interior and Equipment package (available CS, RS and Z24 models) includes Custom Interior and Custom reclining seats with adjustable head restraints, color-keyed Sport steering wheel on Z24, split-folding rear seat on hatchbacks and wagons and Quiet Sound Group (Std. convertible)
- Body pin striping
- Bumper guards (NA Z24)
- Custom Two-Tone paint (CS and RS [except convt.] models only; includes pin striping on CS)
- Electric rear window defogger (except convt.)
- Floor mats, front and/or rear with carpeted inserts
- Halogen headlights, high and low beam
- Intermittent windshield wiper system
- Mirrors: Sport, left-hand remote and right-hand manual (Block) (Std. convt., Z24)
- Moldings: Body side (Cavalier only); Door edge

guards: Wheel opening (convertible); Wheel opening and rocker panel (coupes, hatchbacks, sedans and wagons)

- Rear compartment cargo cover (hatchbacks and wagons)
- Rear spoiler (RS and Z24 hatchback only)
- Tinted glass (Std. convt.)

Performance

- Axle, final drive: performance ratio
- F41 Sport Suspension requires power steering and P195/70R-13 tires (Std. with RS and Z24)
- Heavy-duty battery*
- Heavy-duty radiator†
- Heavy-duty front and rear suspension (CS and base only—except wagons and †included w/ auto trans and ‡4 engine.
- Base, CS and RS models w/ L4 engine.

GM-Delco Audio Equipment

(All radios include dual front speakers; all stereos also include dual rear speakers.)

- AM radio (Std. CS, RS and Z24; may be deleted for credit)
- ETR™ (electronically tuned receiver) AM/FM stereo radio w/seek and scan
- ETR AM/FM stereo radio w/seek and scan and digital clock

- ETR AM/FM stereo radio w/seek and scan, cassette tape and digital clock
 - ETR AM stereo™/FM stereo radio w/seek and scan, cassette tape with search and repeat, graphic equalizer and digital clock (includes premium rear extended-range speakers)
 - Premium dual rear extended-range speakers
 - Radio delete.
- *Receives C-Quam™ AM stereo broadcasts. C-Quam is a registered trademark of Motorola, Inc.

Tires

- P175/60R-13 all-season white-stripe (base, CS models)*
 - P195/70R-13 all-season blackwall (base, CS models, Std. RS models)*
 - P195/70R-13 all-season white-stripe (base, CS models)*
 - P195/70R-13 all-season white-lettered (base, CS and RS models)*
 - P215/60R-14 blackwall (convertible, Std. Z24)
 - P215/60R-14 white-lettered (Z24 and convertible only)*
- *Steel belted radial ply.

Wheel Equipment

- 13" aluminum wheels (base, CS and RS models)
- Sport wheel covers (base, CS and RS models)
- Wheel trim rings (base, CS models)
- 14" aluminum wheels (Z24 only)
- 14" styled steel wheels (convertible, Std. Z24)



The available rear luggage carrier is as stylish as it is practical.

Cavalier's standard instrument panel includes easy-to-read displays and conveniently located controls.

The Z24 and RS models feature a cockpit-style floor console. Controls for available air conditioning and your choice of AM/FM stereo cassettes are just above.

Comfort and Convenience

- Air conditioning
- Auxiliary lighting (includes headlamp-on reminder chimes plus rear luggage compartment/cargo area, underhood, glove compartment, courtesy and dome reading lights)
- Comfortilt steering wheel
- Electronic instrument cluster; includes electronic gauges and tachometer (RS models; Std. Z24)
- Electronic speed control with resume feature
- Gauge package with trip odometer (CS and base models)
- Gauge package with tachometer and trip odometer (CS and base models)
- Power door lock system
- Power hatch/lift-gate release (hatchbacks and wagons only)
- Power steering (Std. RS, Z24)

- Power trunk opener
- Power windows (Std. convertible)
- Rear window wiper and washer (hatchbacks and wagons)
- Removable sunroof (except wagons and convertible)
- Roof carrier
- Seat equipment: Six-way power seat for driver's side; Split-folding rear seat (hatchbacks and wagons only; includes w/CL)
- Sport steering wheel (Std. RS, Z24)
- Deck-lid luggage carrier (2-door coupe and sedan only).

GM Protection Plan

The GM Protection Plan offers service protection in addition to that provided by GM's new-vehicle limited warranty. Ask your dealer about it. Coverage available only in U.S. and Canada.

Hatchbacks feature up to 43.3 cu. ft. of cargo space.

Cavalier opens up to the great beyond when you order the available sunroof.

Reclining front bucket seats are standard on all Cavaliers.



Features and Options.

Interiors	Black	Blue	Gray	Red	Saddle
Cavalier and Cavalier OS Models					
Standard reclining bucket seats	■	■	■	■	■
Vinyl (Std.) Cloth (Opt.)	■	■	■	■	■
Cavalier RS and Z24 Models					
Standard reclining contoured bucket seats	■	■	■	■	■
Cloth (Std.) Vinyl**	■	■	■	■	■
Optional CI Custom Interior					
Features reclining contoured front bucket seats and adjustable head restraints (Standard Convertible)	■	■	■	■	■
Vinyl**	■	■	■	■	■

*Sport Clom - features black gray cloth inserts, red piping and unique black gray door panels (Std Z24) **Not available Z24 models **Convertible only

2.0 Liter I4 With EFI

Cavalier's standard 2.0 Liter I4 engine with Electronic Fuel Injection is designed to provide:

- Simple "turn-key" starting, hot or cold, without touching the gas pedal.
- No delays from flooding or vapor lock.
- Quick engine response in any weather.
- Self-adjusting idle to reduce stalling when accessories are switched on.
- No stall on quick braking.
- Optimized performance between recommended service intervals.
- Automatic adjustment to elevation to optimize power and to minimize fuel loss.

- Reduced maintenance (no choke, accelerator pump or carburetor to adjust).
- No "run-on" after the ignition is switched off.
- Better acceleration with available air conditioning that switches off automatically under full throttle.
- Easy starts after idling, should you run out of gas.

Power Teams

Engine	Draining Code		Engine Availability		Transmissions	
	LQ5	S	4-Speed Manual	5-Speed Automatic	O	O
2.0 Liter EFI* L4	L86	O*	O*	O*	O*	O*
2.8 Liter MPI** V6**	L86	O*	O*	O*	O*	O*

*Standard 224
S: Standard, NA: Not Available, O: Optional
**Available 224 and convertible only

2.8 Liter V6 With Multi-Port Fuel Injection

MPFI doesn't stand for "more power from injection," but it certainly can! Six tube-like "pans" carry air from the aluminum intake to platinum atop the six individual cylinders. It is here that gasoline and air are combined in a precisely metered ratio worked out by an on-board computer.

Because the distance each port travels is millimeterically determined, the air pulses are, in effect, timed to arrive at precisely the right moment in the combustion cycle to increase cylinder filling. The result is more power. The kind of instant response you'd normally associate with a larger engine.

Facts.

Safety Features

Occupant Protection

- Manual lap/shoulder belts for driver and right front passenger (driver's side includes visual and audible warning system)
- Manual lap belts of each rear-seat position
- Energy-absorbing steering column
- Energy-absorbing instrument panel
- Energy-absorbing front seat-back tops
- Laminated safety windshield glass and tempered safety side and rear window glass (except plastic rear window)
- Cavalier (Convertible)
- Safety interlocking door latches
- Passenger-guard inside door lock handles
- Inertia-locking, folding front seat-back
- Safety armrests
- Head restraints, driver and right front passenger (adjustable interior)

Accident Avoidance

- Side marker lights and reflectors
- Parking lamps that illuminate with headlamps
- Four-way hazard warning flasher
- Backup lights
- Center high-mounted stop lamp
- Directional signal control with lane change flashes
- Windshield wiper, washer and dual-speed wipers
- Inside rearview mirror with vinyl-banded glass
- Outside left rearview mirror (right mirror standard on convertible and Z24 models)
- Rearview system with dual master cylinder and warning light
- Starter safety switch
- Dual-action hood latch system
- Low-gear finish on instrument panel top, inside windshield moldings, wiper arms, blades, multi-spoke steering wheel surfaces
- Illuminated heater and defroster controls
- Illuminated windshield wiper and washer controls
- Tires with built-in tread-wear indicators.

Theft Deterrence

- Audible reminder for ignition key removal
- Theft-deterrent steering column lock
- Visible vehicle identification number.

Exterior Features

- Argent grille
- Black grille
- Bright grille
- Black outside rearview mirror
- Body-color bumper covers
- Body side moldings
- Bumper rub strips
- Integral rear air deflector
- Wide-base styled steel wheels

Interior Features

- AM push-button radio with dual front speakers
- Center high-mounted stop lamp
- Cigarette lighter and ashtray
- Cockpit console with storage, coin holder and rear ashtray
- Color-keyed instrument panel, console, steering wheel and column
- Color-keyed seat and shoulder belts
- Day night inside rearview mirror
- Dual-speed wipers with fluidic washer system
- Easy-access fuse panel
- Easy-rear-entry right front seat (coupe)
- Extended front seat track
- Front console with storage and coin holder
- Four-door rear seat
- Glove compartment lock
- Load floor carpeting
- Multi-function turn signal stalk
- Reclining front bucket seats
- Side window defoggers
- Tarp-edge apr warning light
- Theft-deterrent door locks
- Trunk floor carpeting

Dimensions (in.)

	Secon	Wagon	Coupe	Hatch	Convrt
Wheelbase	101.2	101.2	101.2	101.2	101.2
Length (overall)	174.3	174.5	172.4	172.4	172.4
Width (overall)	66.3	66.3	66.0	66.0	66.0
Height (overall)	52.1	52.8	50.2	50.2	52.7
Head Room - Front	38.6	38.3	37.7	37.6	39.1
Head Room - Rear	38.0	38.8	36.7	36.4	37.4
Leg Room - Front	42.2	42.2	42.2	42.2	42.9
Leg Room - Rear	34.3	33.7	31.8	31.8	30.5
Shoulder Room - Front	53.7	53.7	53.7	53.7	53.7
Shoulder Room - Rear	53.7	53.7	52.6	52.0	38.0
Luggage Cargo Capacity (cu. ft.)	13.6	34.1*	13.2	14.8*	10.4
Fuel Tank Capacity (gals.)	13.6	13.6	13.6	13.6	13.6

*64 with rear seat down 38.3 with rear seat down
LITHO IN U.S.A. 4564

A Word About Assembly, Components and Optional Equipment in These Chevrolets.

The Chevrolets described in this catalog are assembled at facilities operated by General Motors or GM of Canada. These vehicles incorporate thousands of different components produced by car groups and various component divisions of General Motors and by various suppliers worldwide to General Motors. From time to time during the manufacturing process, it may be necessary, in order to meet public demand for particular vehicles or equipment, to meet federally mandated emissions, safety and fuel economy requirements, or for other reasons, to produce Chevrolet products with different components or differently sourced components than initially scheduled. As such components have been approved for use in Chevrolet products and will provide the quality performance associated with the Chevrolet name.

When respect to extra-cost optional equipment, make certain you specify the type of equipment you desire on your vehicle when ordering it from your dealer. Some options may be unavailable when your car is built. Your dealer receives advance reporting current availability of options. You may ask your dealer for this information. GM also requests the dealer to advise you if an option you ordered is unavailable. We suggest that you verify that your car includes optional equipment you ordered or, if there are changes, that they are acceptable to you.

Important: A Word About This Catalog.

We have had to make this catalog as comprehensive and factual as possible and we hope you find it helpful. However, since the time of printing, some of the information may have been updated. Also, some of the equipment shown or described throughout this catalog is available at extra cost. Your dealer has details and, before ordering, you should ask him to bring you up to date. The light is reserved to make changes at any time, without notice, in prices, colors, materials, equipment, specifications and models. Check with your Chevrolet dealer for complete information.

Commitment to Excellence

Chevrolet enhances your ownership experience with its "Commitment to Excellence," a customer satisfaction program that brings you an extensive system of services and benefits. The program includes:

- Vehicle identification cards to speed your service request at the dealership.
- Special rates and reservation service at participating hotels, motels and car rental agencies.
- Hotel, motel and car rental guides.
- Preprogrammed key return service.
- A "Let's Talk" booklet of service signals.
- A glove compartment organizer.
- An improved delivery procedure that includes an inspection checklist and orientation drive.

Chevrolet's "Commitment to Excellence" is another way Chevrolet takes care of you for as long as you own your car.

A Word About Updated Service Information.

Chevrolet regularly sends its dealers useful service bulletins about Chevrolet products. Chevrolet monitors product performance in the field. We then prepare bulletins for servicing our products better. Now you can get these bulletins, too. Ask your dealer. To get ordering information, call toll-free 1-800-551-4123.

A Word About Engines.

Chevrolets are equipped with engines produced at facilities operated by GM car groups, subsidiaries or affiliated companies worldwide.

Let's Get It Together...Buckle Up.

Every new 1986 Cavalier delivered by a Chevrolet dealer in the United States comes with an one-year, \$10,000 safety belt user insurance certificate from GMAC General Insurance Corporation at no additional charge. \$10,000 will be paid to the estate of any occupant who suffers fatal injuries as a result of an accident involving that vehicle while wearing a GM safety belt brought you up to date. The light is reserved to make changes at any time, without notice, in prices, colors, materials, equipment, specifications and models. Check with your Chevrolet dealer for complete information.

Back cover: Cavalier OS Hatchback.

T O D A Y ' S C H E V R O L E T . L I V E I T !

